

Superintendent's Report

Dr. Akil E. Ross, Sr.

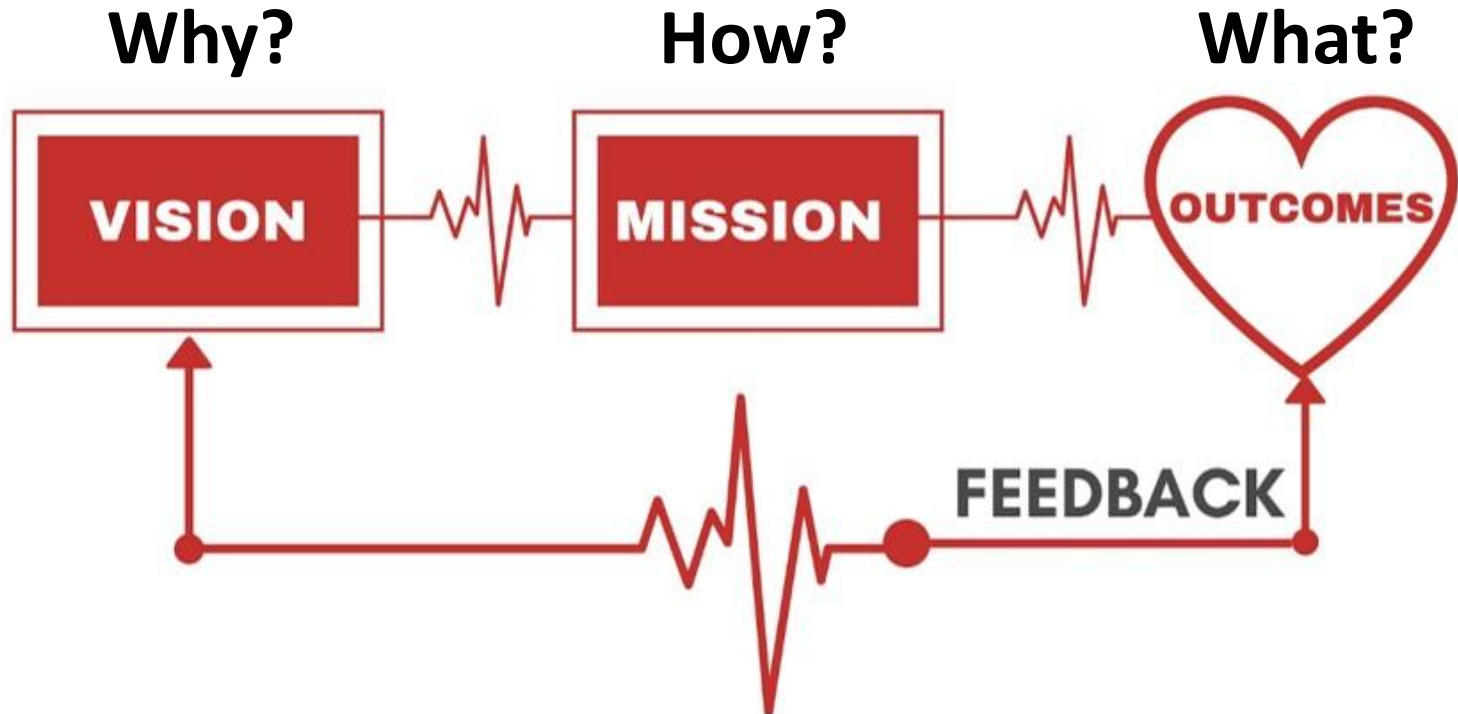
Superintendent

School District Five of Lexington and
Richland Counties

June 13, 2022



We Are a System



System – A group of units so combined as to **form a whole and to operate in unison**

Source: Merriam Webster Dictionary



**"We and Grow
Our Students!"**

Our Mission

The mission of School District Five of Lexington and Richland Counties, in partnership with our stakeholders, is to prepare all students to be college and career ready by providing a challenging curriculum in a safe, secure, diverse, and equitable learning environment focused on academic, social, and emotional growth and development.

Our Mission

The mission of School District Five of Lexington and Richland Counties, in partnership with our stakeholders, is to prepare all students to be college and career ready by providing a challenging curriculum in a safe, secure, diverse, and equitable learning environment focused on academic, social, and emotional growth and development.

Multi-Layered Security System

1. Communication
2. Compartmentalization
3. Radar Awareness



Multi-layered School Security System

1. Communication

- Lexington and Richland County Sheriff's Departments
- Safety Team
- STOPiT App

2. Compartmentalization

- Screening, Cameras, Door Sensors, Barricades, Security Personnel

3. Awareness

- SLED Behavior Unit
- Mental Health and Mental Illness Treatment



Awareness - Mental Health and Mental Illness

- D5LR averages **5,512 counseling sessions per month** with 52 school counselors resulting in a caseload of 106 counseling sessions per counselor per month
- D5LR averages **1,131 crisis response incidents per month** with 11 social workers resulting in a caseload of 102 crisis responses per social worker per month
- D5LR is managing **900 active student evaluations** with 21 school Psychologist resulting in a 42/1 caseload
- D5LR has completed **311 suicide evaluations**, averaging 39 suicide evaluations per month.



Our Mission

The mission of School District Five of Lexington and Richland Counties, in partnership with our stakeholders, is to prepare all students to be college and career ready by providing a challenging curriculum in a safe, secure, diverse, and equitable learning environment focused on **academic, social, and emotional growth and development.**

Top challenges to our Mission

1. Mental Health and Education

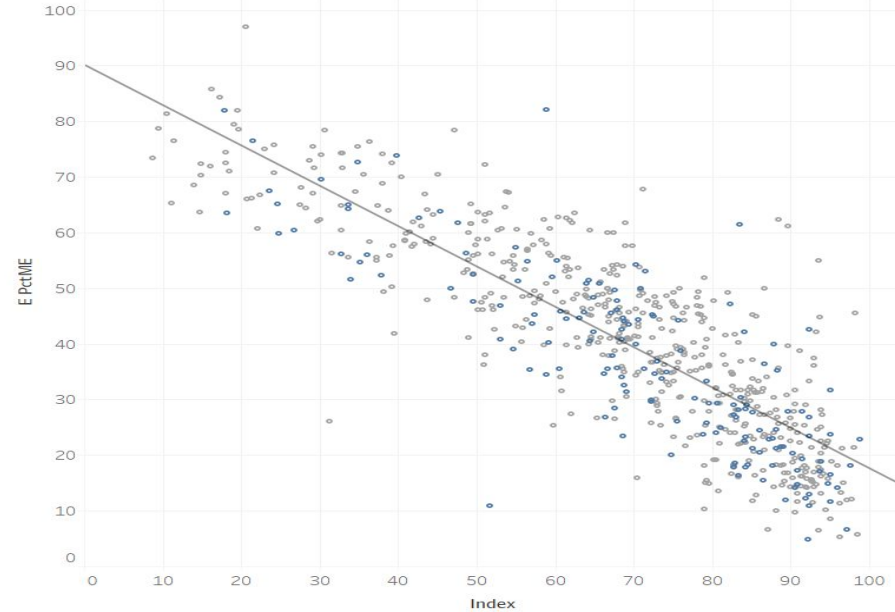
1 in 5 U.S. youth aged 6-17 experience a mental health disorder each year.

Students aged 6-17 with mental, emotional or behavioral concerns are 3x more likely to repeat a grade.

National Alliance on Mental Illness, Feb 2022

2. Poverty's Impact on Proficiency

Poverty Index & SC READY ELA (% Exceeds and Meets) - 2021



Correlation of Determination = .713

**To love and grow our students,
we must love and grow our novice teachers.**

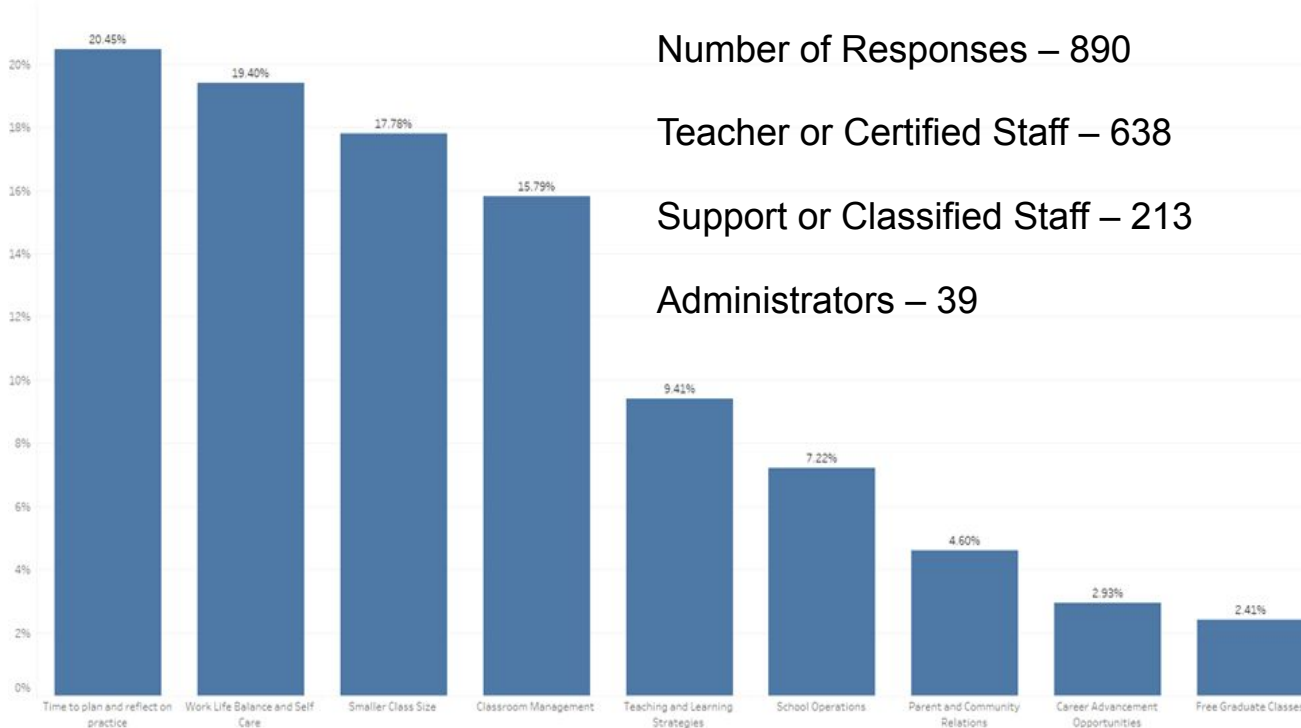
**The problem is here.
The need to respond is real.**

Let's keep talking.



Our Teachers and Staff Response

Percentage of all top 3 responses that went to a specific support - Teachers and Certified Staff



Number of Responses – 890

Teacher or Certified Staff – 638

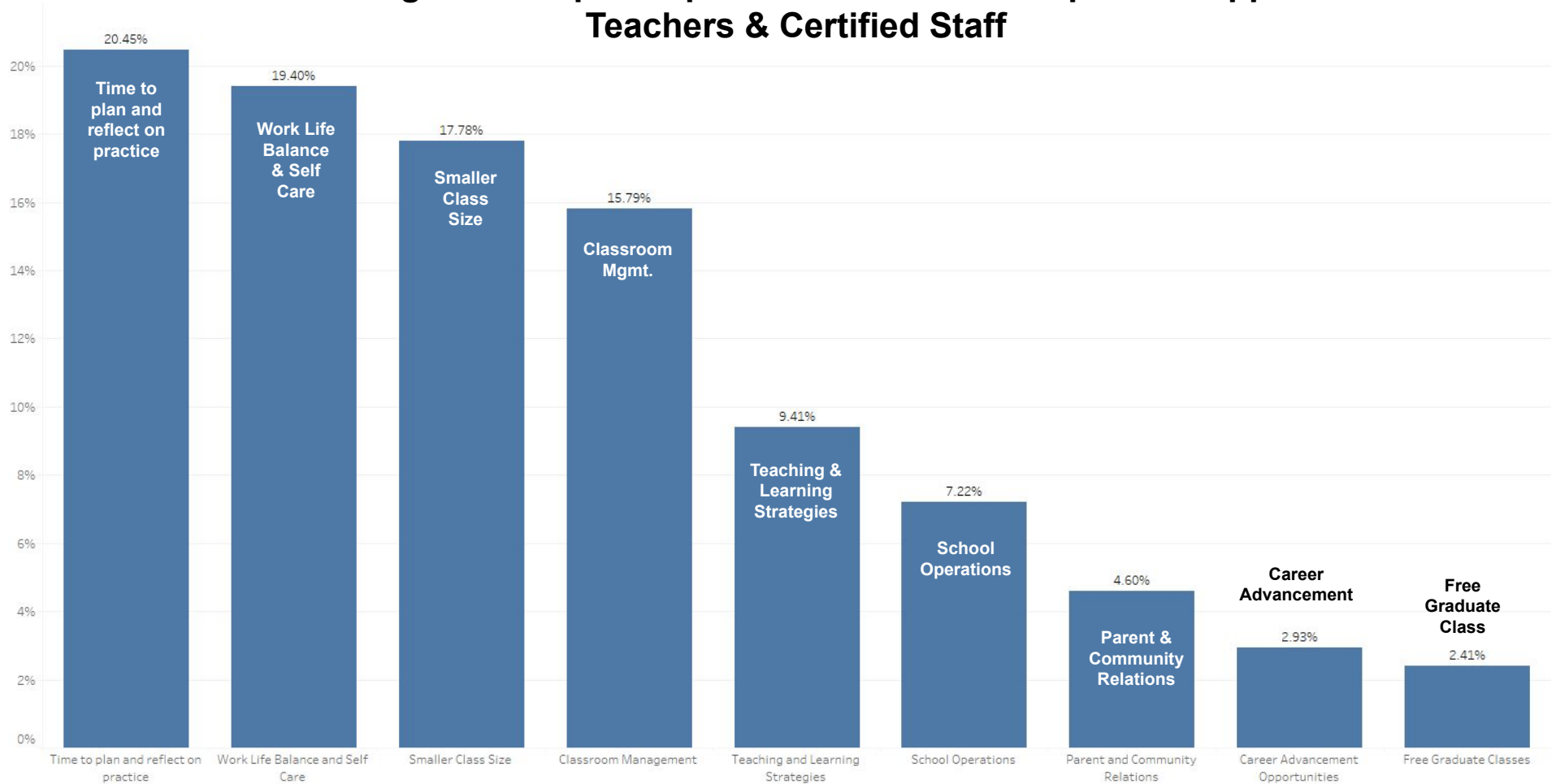
Support or Classified Staff – 213

Administrators – 39

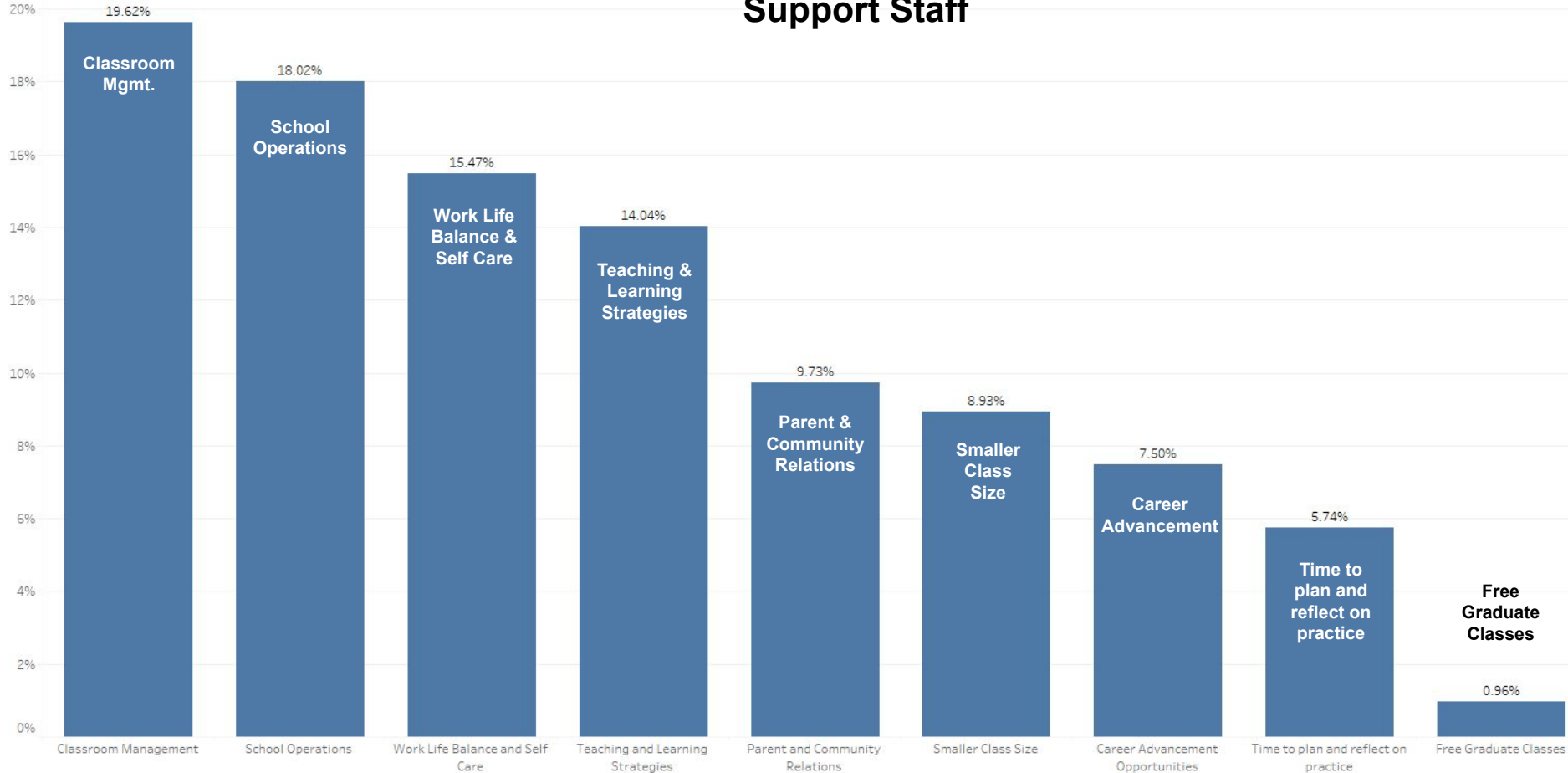
While all are important, please rank order from 1 (most important) to 9 (least important) the following teacher supports.

1. **Time to plan and reflect on practice**
2. **Work-Life Balance and Self Care**
3. **Smaller Class Size**
4. Classroom Management
5. Teaching and Learning Strategies
6. School Operations
7. Parent and Community Relations
8. Career Advancement Opportunities
9. Free Graduate Classes

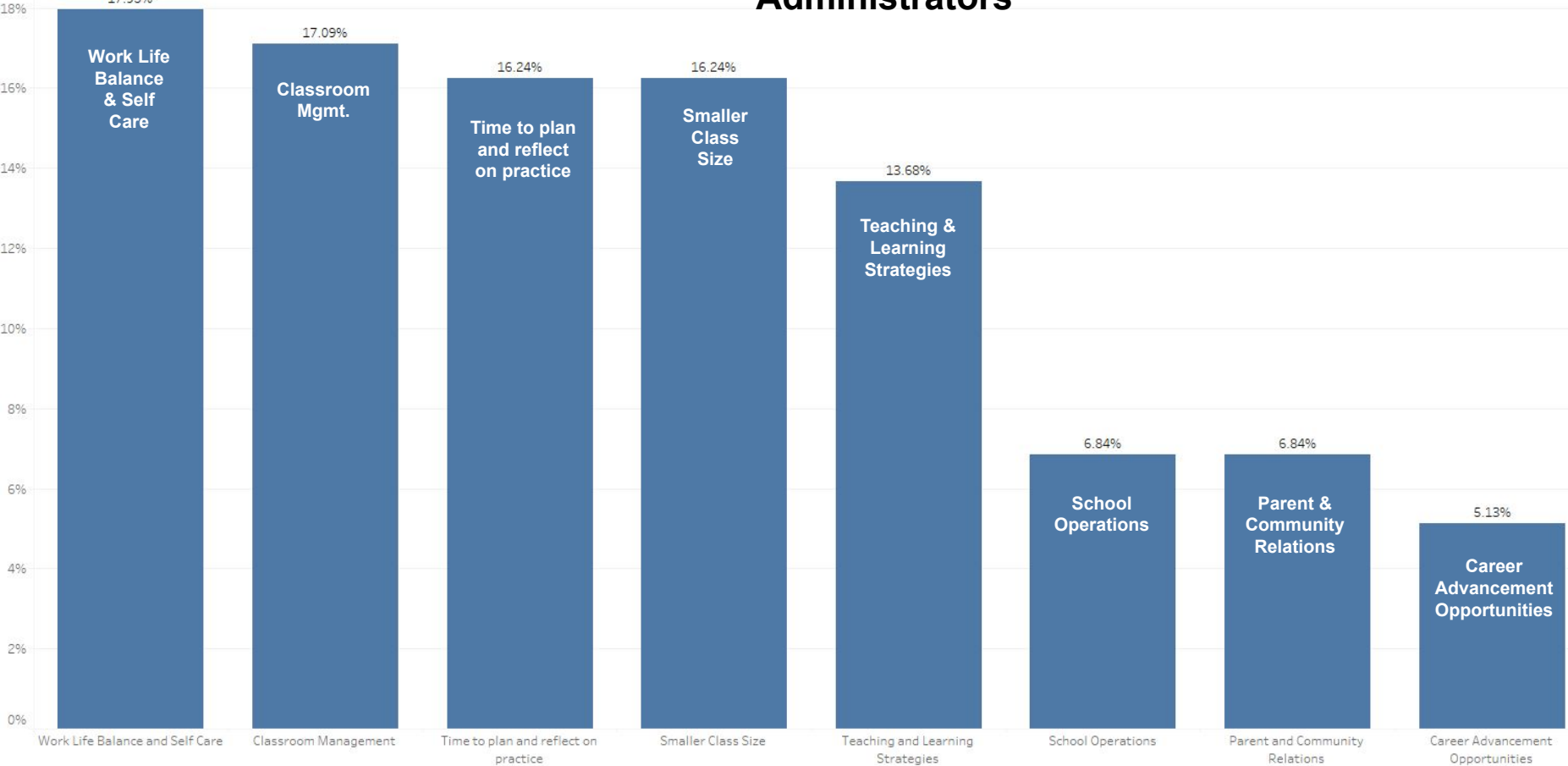
Percentage of all top 3 responses that went to a specific support - Teachers & Certified Staff

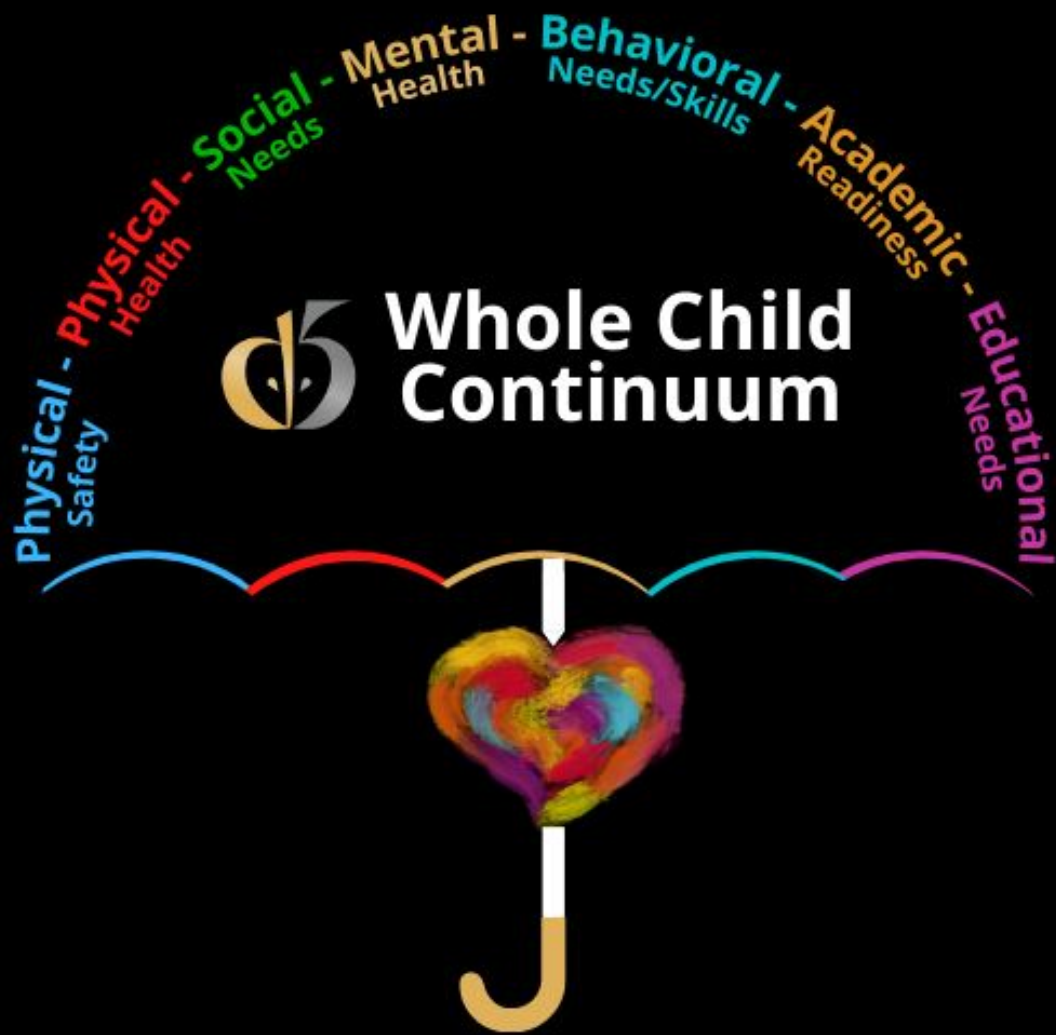


Percentage of all top 3 responses that went to a specific support - Support Staff



Percentage of all top 3 responses that went to a specific support - Administrators





Our Mission

The mission of School District Five of Lexington and Richland Counties, in partnership with our stakeholders, is to prepare all students to be college and career ready by providing a challenging curriculum in a safe, secure, diverse, and equitable learning environment focused on academic, social, and emotional growth and development.

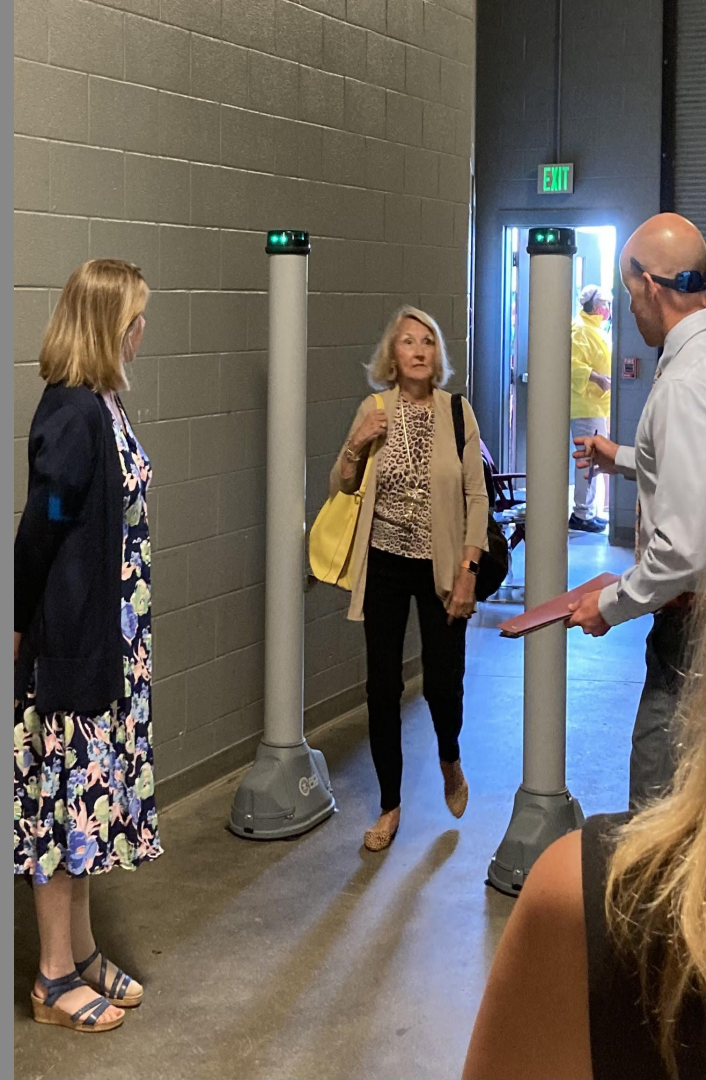


**OpenGate Metal
Detector
Demonstration
With
Captain
Scott Ellis,
UofSC
Law
Enforcement &
Safety**



**Colonial Life
Arena**

June 2, 2022





Multi-layered School Security System

1. Communication

- Lexington and Richland County Sheriff's Departments
- Safety Team
- STOPiT App

2. Compartmentalization

- Screening, Cameras, Door Sensors, Barricades, Security Personnel

3. Awareness

- SLED Behavior Unit
- Mental Health and Mental Illness Treatment



