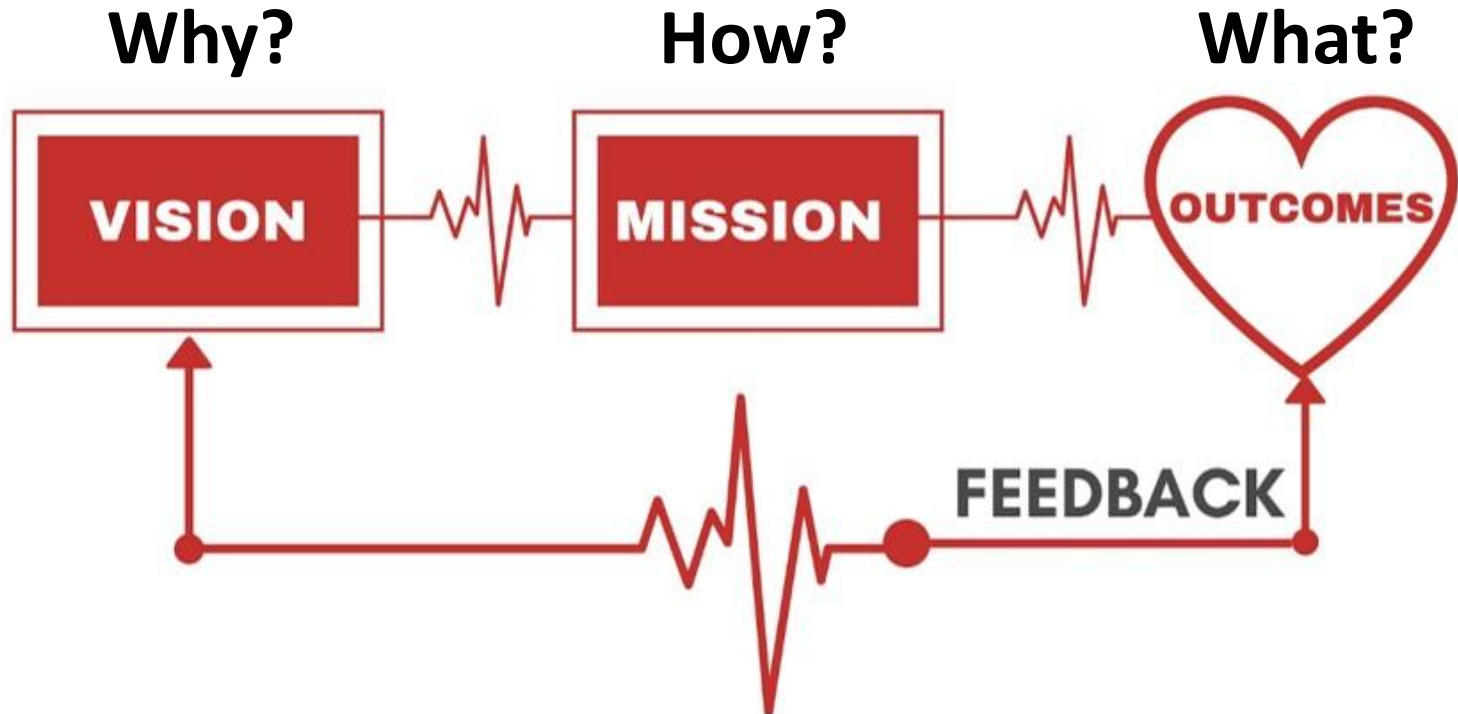




We Are a System



System – A group of units so combined as to **form a whole and to operate in unison**

Source: Merriam Webster Dictionary



**"We and Grow
Our Students!"**

Our Mission

The mission of School District Five of Lexington and Richland Counties, in partnership with our stakeholders, is to prepare all students to be college and career ready by providing a challenging curriculum in a safe, secure, diverse, and equitable learning environment focused on academic, social, and emotional growth and development.

Physical - Physical - Social - Mental - Behavioral - Academic - Educational
Safety Health Needs Health Needs/Skills Readiness Needs



Whole Child Continuum



Our Mission

The mission of School District Five of Lexington and Richland Counties, in partnership with our stakeholders, is to prepare all students to be college and career ready by providing a challenging curriculum in **a safe, secure**, diverse, and **equitable learning environment** focused on academic, social, and emotional growth and development.⁶



Facilities Master Plan Guiding Principles



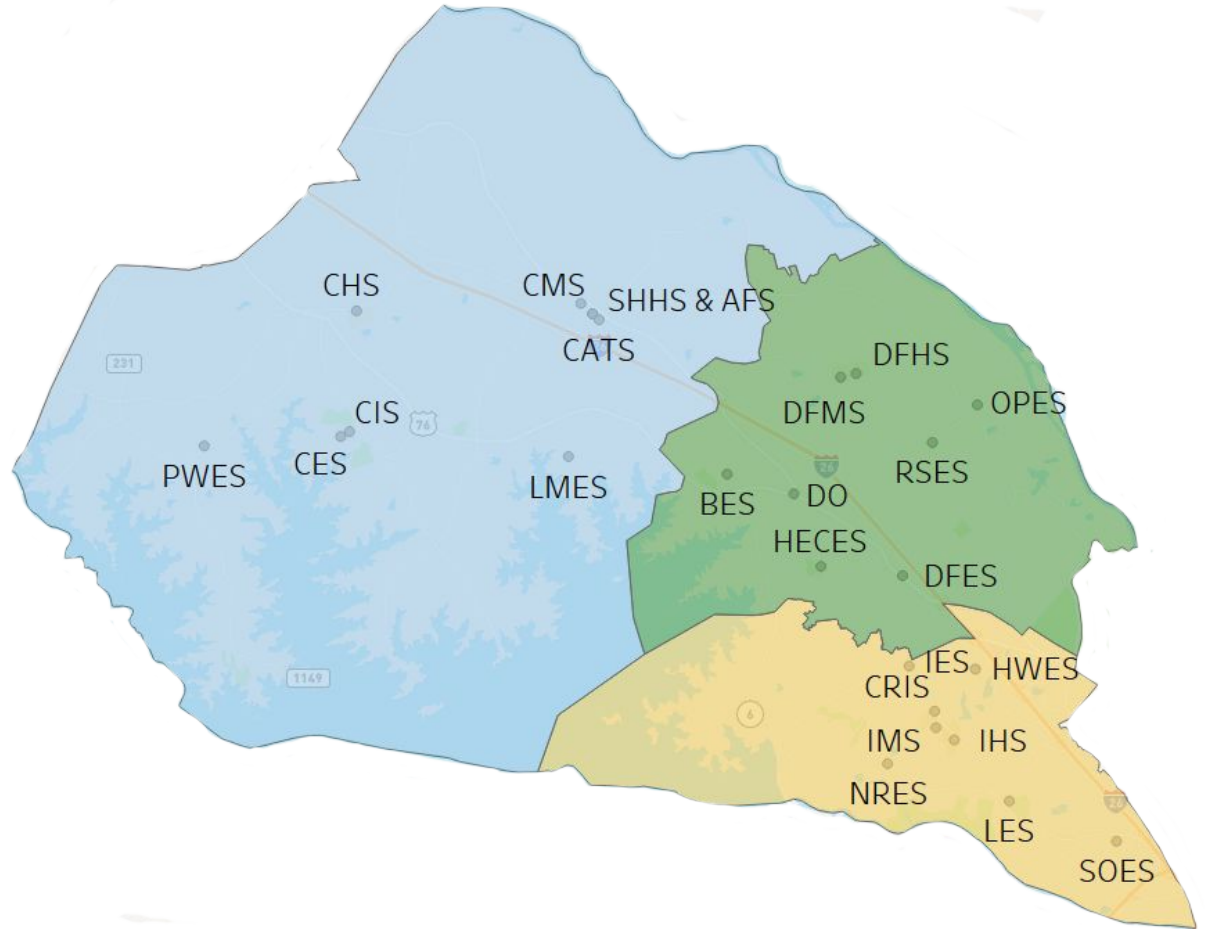
1. Community Analysis
2. Facilities Need Assessment
3. Enrollment and Projections
4. Instructional Plan Review
5. Plan

Building a Strong Educational Foundation for



District Five

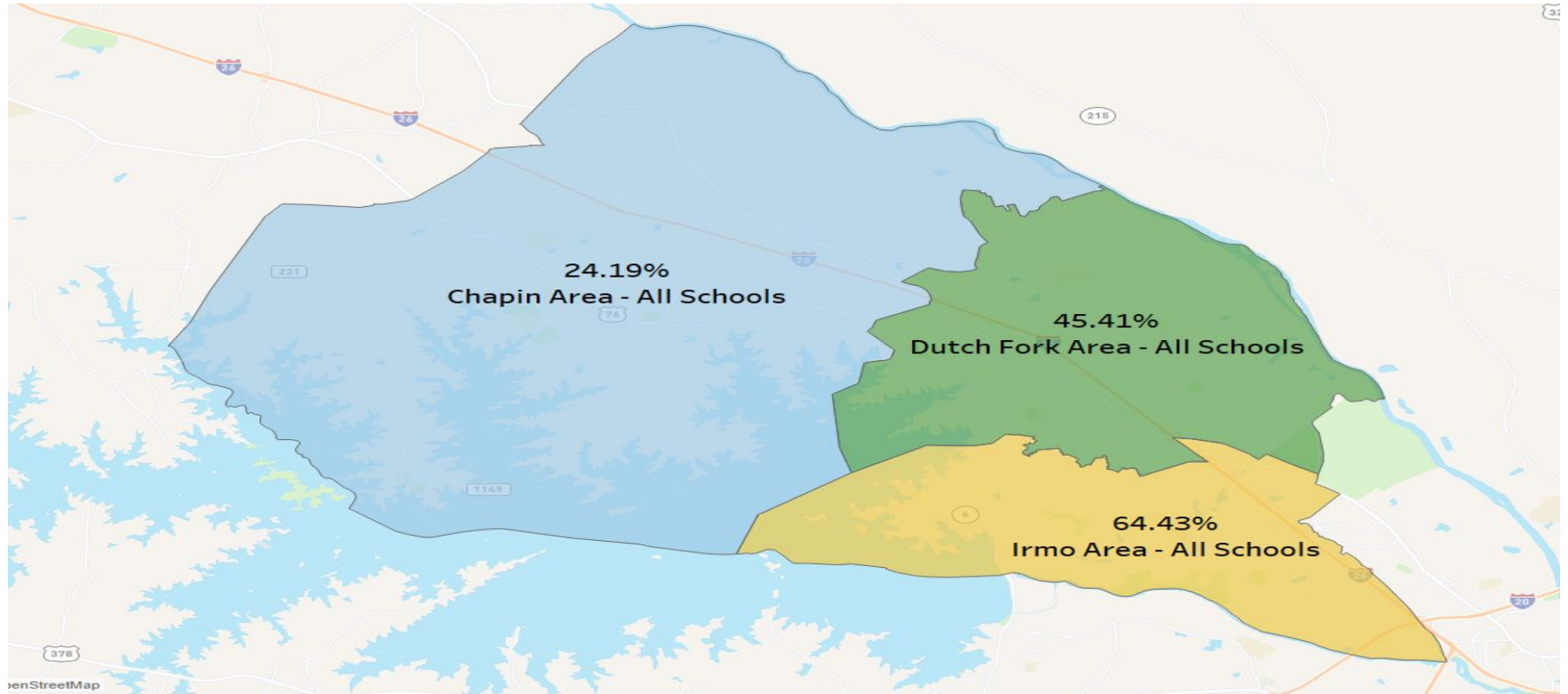
OF LEXINGTON & RICHLAND COUNTIES





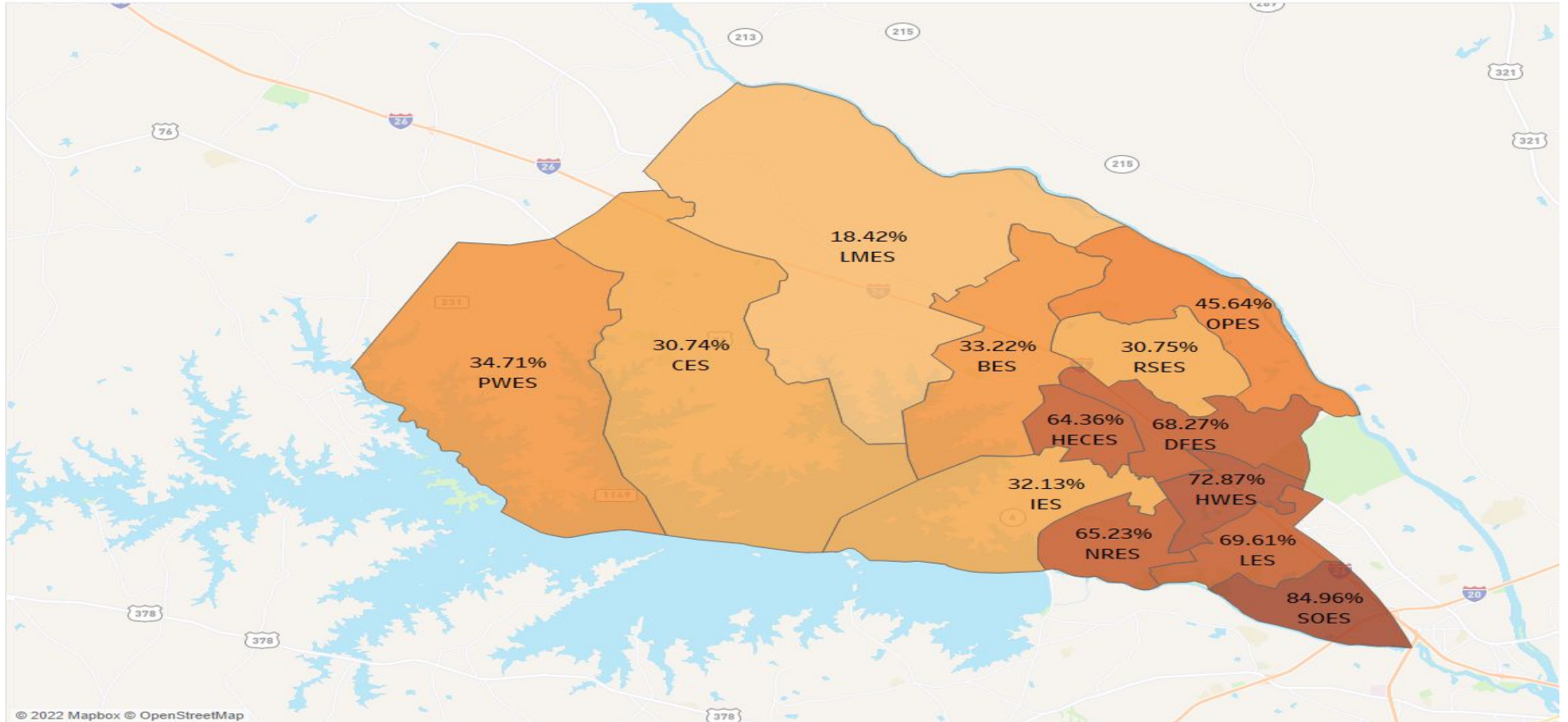
Community Analysis

Pupils in Poverty in School District Five of Lexington and Richland Counties



Pupils in Poverty in School District Five of Lexington and Richland Counties (2022 - 135th day report)

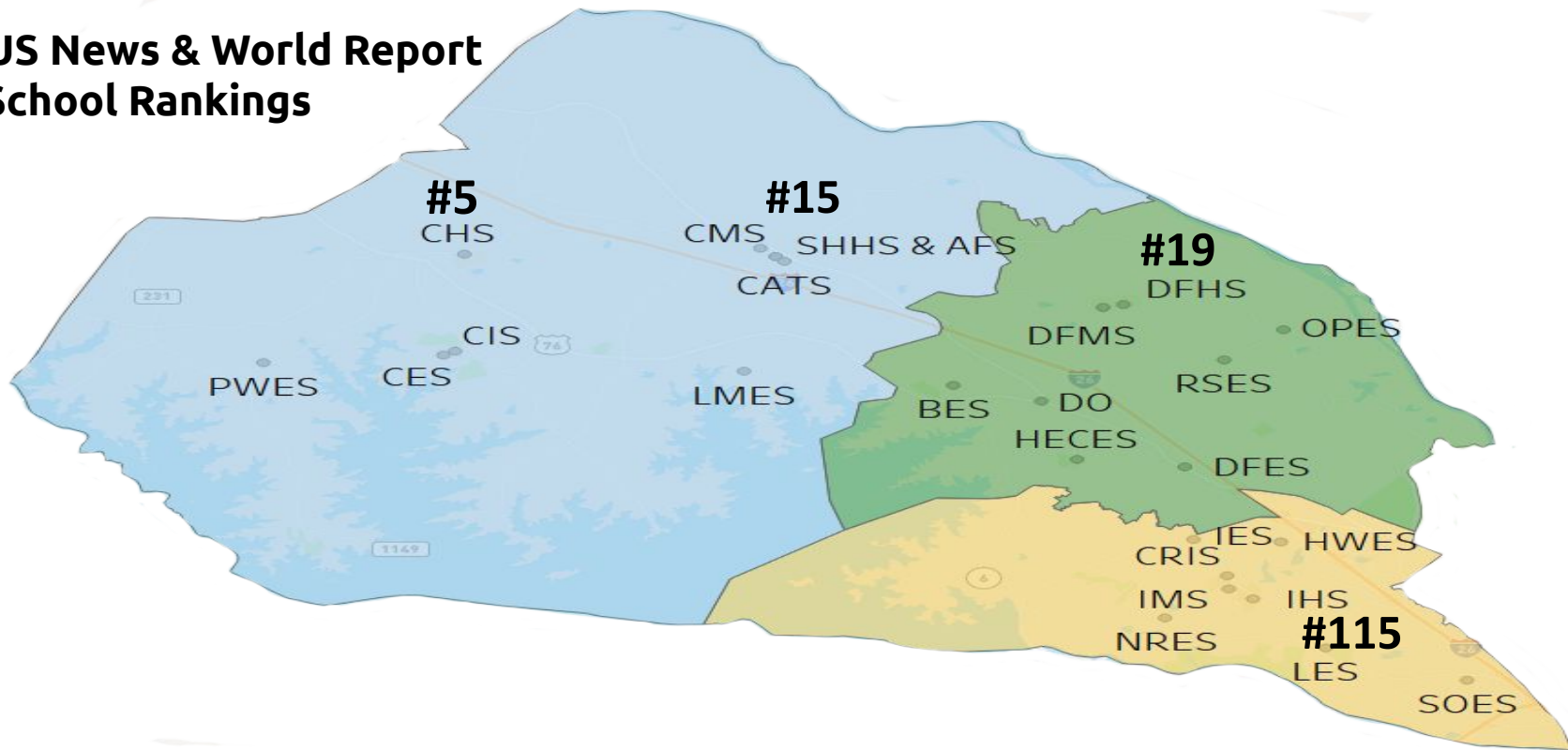
Percent Pupils in Poverty - By Elementary School





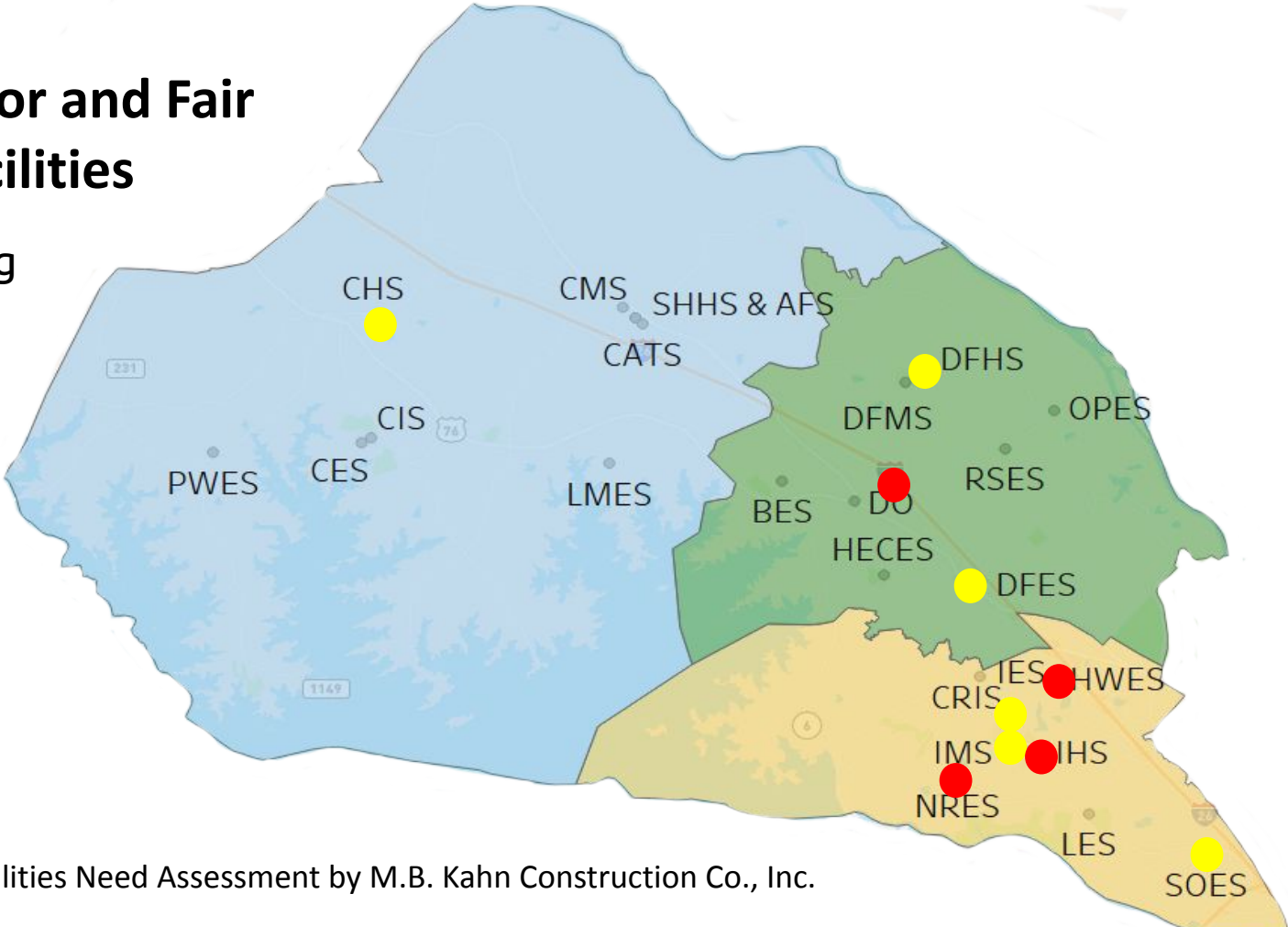
Instructional Plan Review

2021 US News & World Report High School Rankings



Location of Poor and Fair Rated Facilities

- Poor Rating
- Fair Rating





Facilities Need Assessment

Facility Rating Chart

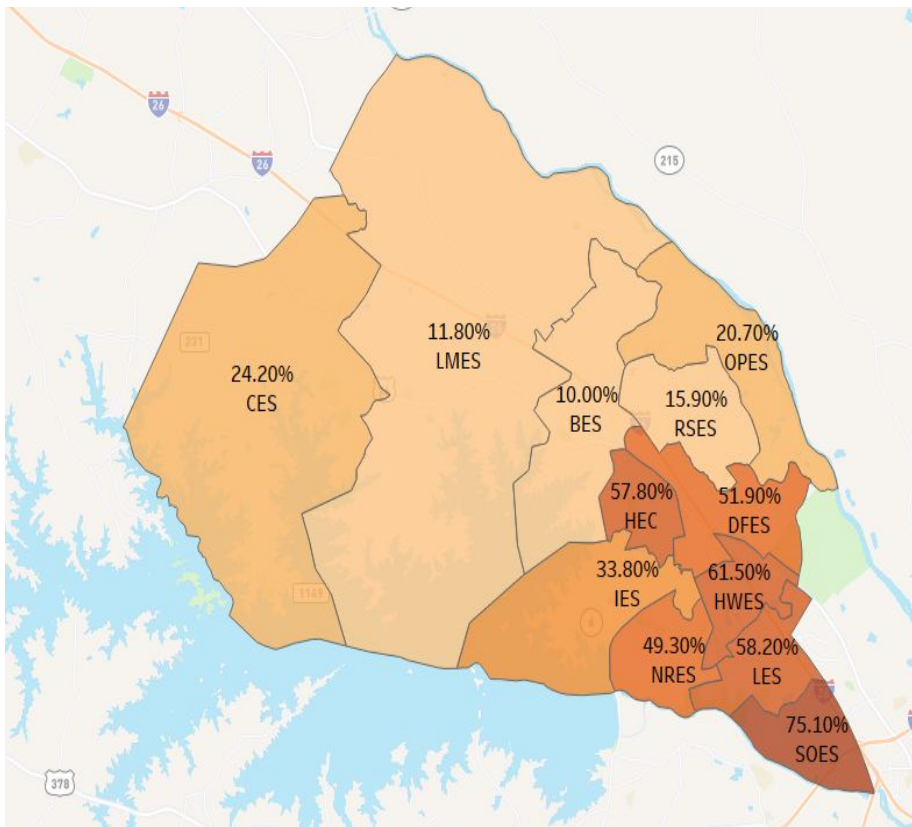
Excellent	4
Good	10
Fair	6
Poor	4
Total	24

2019 District-Wide Facilities Need Assessment by M.B. Kahn Construction Co., Inc. had three (3) goals:

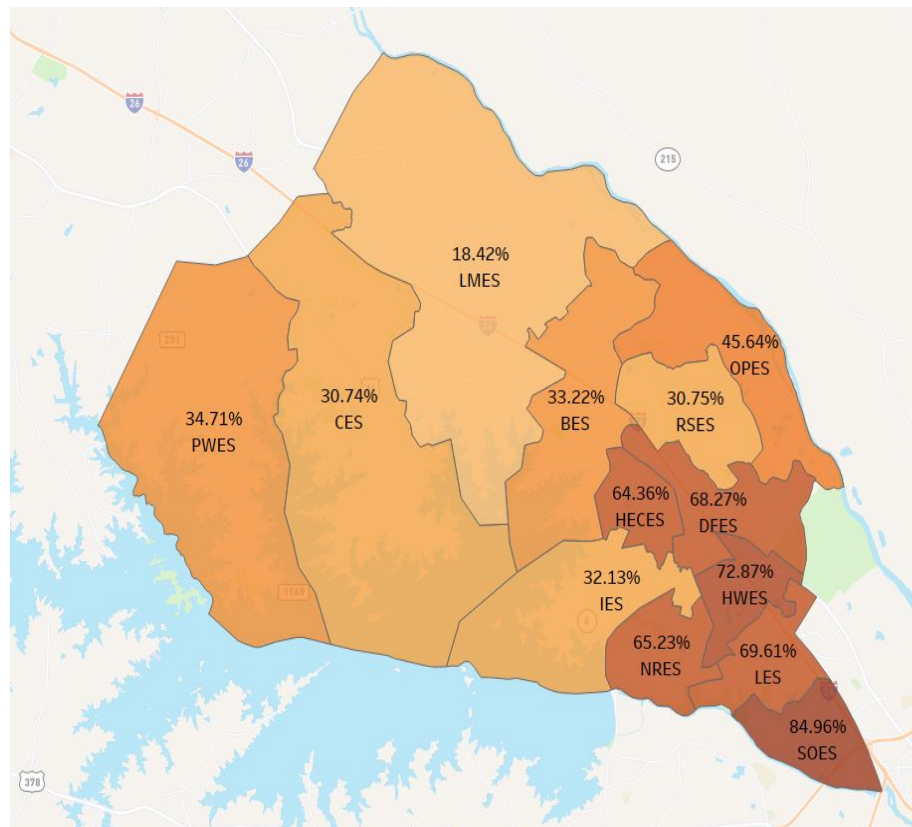
1. To assess the District's current facilities' conditions, uses and maintenance needs
2. To offer options to address school operations issues, such as aging structures
3. To provide construction strategies responsive to future uses and learning methods in light of funding constraints, existing projects and plans, and current facility conditions

Poverty in School District Five of Lexington and Richland Counties

2011



2022



Alternative Education Programs

SHHS

Academy for Success

Adult Education

The Center for Advanced Technical Studies

Flexible Innovative Virtual Education (FIVE)

CHS

CMS

CIS

CES

LMES

PWES

DFHS

DFMS

BES

DFES

HECES

OPES

RSES

IHS

IMS

CRIS

HWES

IES

LES

NRES

SOES

Alternative Education Programs

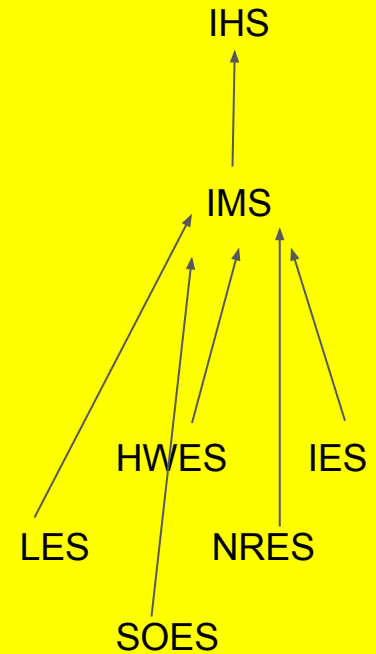
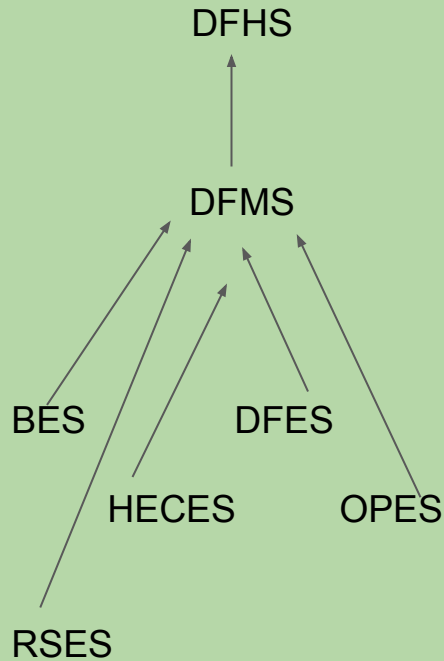
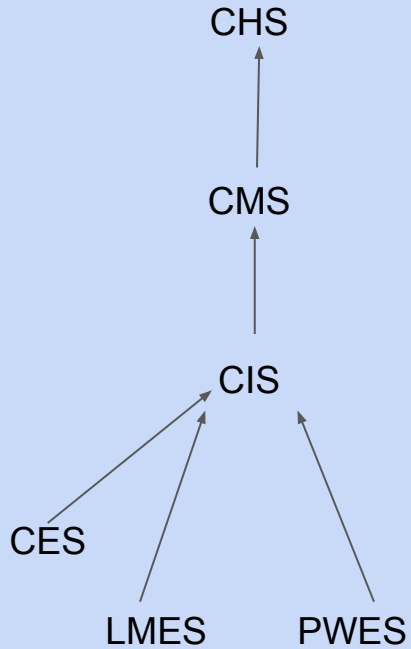
SHHS Academy for Success

Adult Education

Crossroads Early Childhood Center

The Center for Advanced Technical Studies

Flexible Innovative Virtual Education (FIVE)



Options #3 and #4 Board Referendum Projects

Project	Estimated Cost (millions)	Phase (years)
Professional Development Wing - DO	\$4,700,000.00	2023-2025
Dutch Fork Middle School - 6th Grade Wing	\$17,100,000.00	2023-2025
Irmo Middle School - 6th Grade Wing	\$17,600,000.00	2023-2025
CrossRoads Intermediate Renovation and ECC	\$3,500,000.00	2025-2026
Nursery Road Elementary - Remodel	\$21,730,000.00	2025-2027
Harbison West Elementary - Transition	-\$3,000,000.00	2027
New Dutch Fork Elementary	\$41,500,000.00	2023-2025
Alt. Education Programs - Rosenwald-Richlex Bldg.	\$280,000.00	2025-2026
Seven Oaks Elementary - Security Upgrades	\$390,000.00	2026-2027
Chapin High - Fine Arts Building	\$26,200,000.00	2024-2026
TOTAL	\$130,000,000.00	2023-2027



Recommendation: Board Facilities Committee meet to consider the following:

Option 1	Take no action on the remaining poor or fair Rated Facilities	Cost: Unknown
Option 2*	Borrow Above our Millage	\$275 Million** and Increase Taxes Addresses All D5LR Schools
Option 3*	Borrow At our Millage	\$130 Million** and Maintain Tax Rate (69.5 Mills) Addresses All D5LR Poor and Fair Facilities
Option 4*	Borrow Below our Millage	\$130 Million**, Lower Taxes, Longer Payoff time and More Interest (68.5 Mills) Addresses All D5LR Poor and Fair Facilities

*OPTIONS 2, 3 and 4 WILL REQUIRE A Bond Referendum

** Amounts are estimates of cost and do not include inflation

School Finance 101

Millage – a tax on real estate or other property

Operations Millage-

Salaries, Benefits,
Supplies, Utilities,
Maintenance



4% Property

100% Rebate



6% Property

0% Rebate

Debt Service Millage -

Construction,
Technology, Equipment
and Renovations



4% Property

Partial Rebate



6% Property

0% Rebate



Proposed Capital/Bond Projects

Project	Estimated Cost
Dutch Fork High - Renovation	\$2,700,000.00
Dutch Fork High - Stadium	\$3,900,000.00
Lake Murray Elementary - Floor Replacement	\$450,000.00
River Springs Elementary - Floor Replacement	\$450,000.00
Technology Upgrades and Firewalls	\$3,400,000.00
Activity Bus and Special Needs Vehicle	\$200,000.00
Irmo High School - Stadium	\$3,900,000.00
TOTAL	\$15,000,000.00

School Finance 101

Bond Referendum – debt a school district assumes through the sale of general obligation (G.O.) bonds to pay for large capital projects



The annual sale of G.O. Bonds provides the school district with a spending card.

The spending **limit is 8%** of the total assessed value of the Lexington and Richland county assets in the attendance zone.

Our school district borrows the maximum every year and pays down the principal and interest with **Debt Service millage**



4% Property

Partial Rebate



6% Property

0% Rebate

Voters must approve the sale of bonds above 8% limit.

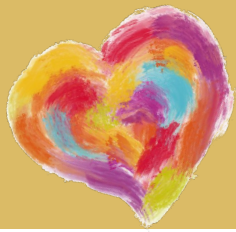
Total Assessed Value of D5LR:
\$586,383,014

Option #1: 8% Limit
\$46,910,641
No Change in Taxes

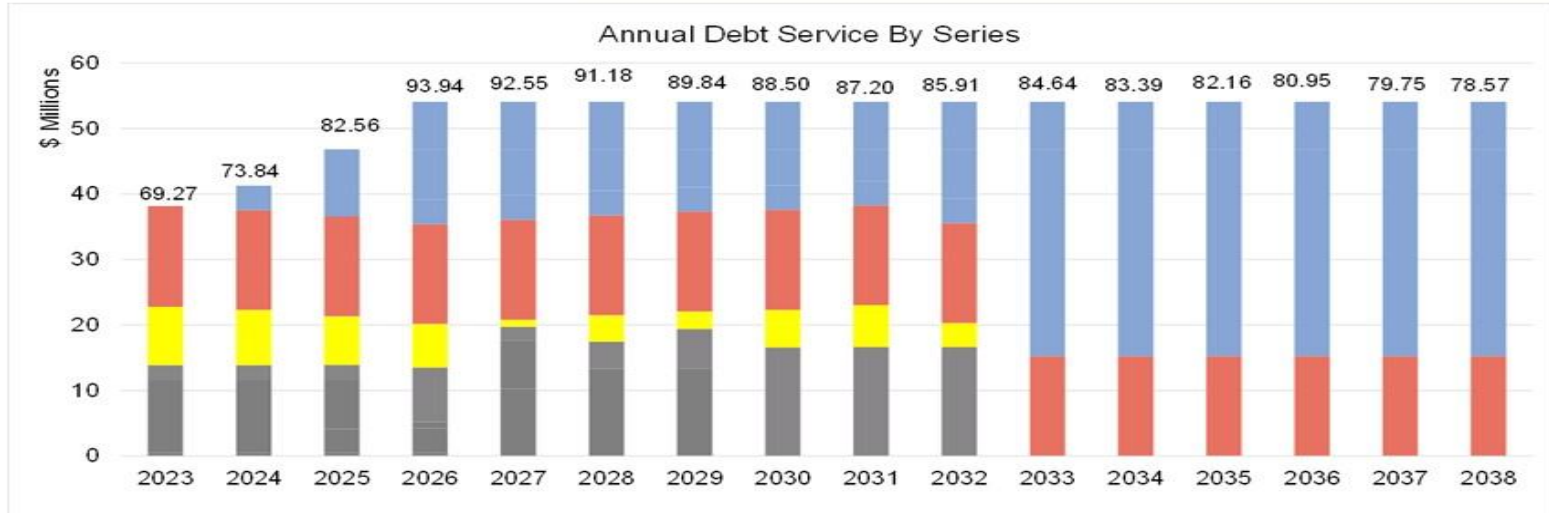
Option #2: 46% of Assessed Value
\$275,000,000
Increase in Taxes

Option #3: 22% of Assessed Value
\$130,000,000
No Change in Taxes

Option #4: 22% of Assessed Value
\$130,000,000
Small Decrease in Taxes

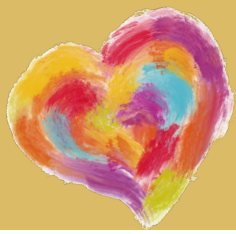


Recommendation: Board Facilities Committee meet to consider Option #2

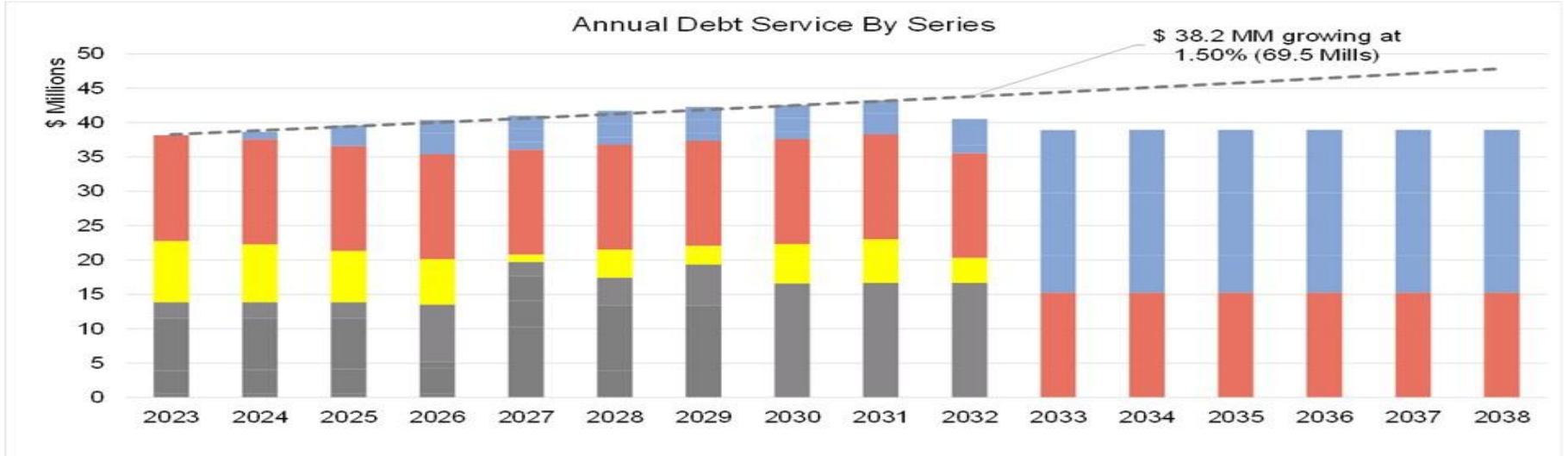


Gray - Previous Debt
Yellow - Irmo High Debt

Red - Annual Maintenance
Blue - Bond Referendum

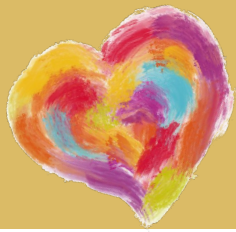


Recommendation: Board Facilities Committee meet to consider Option #3

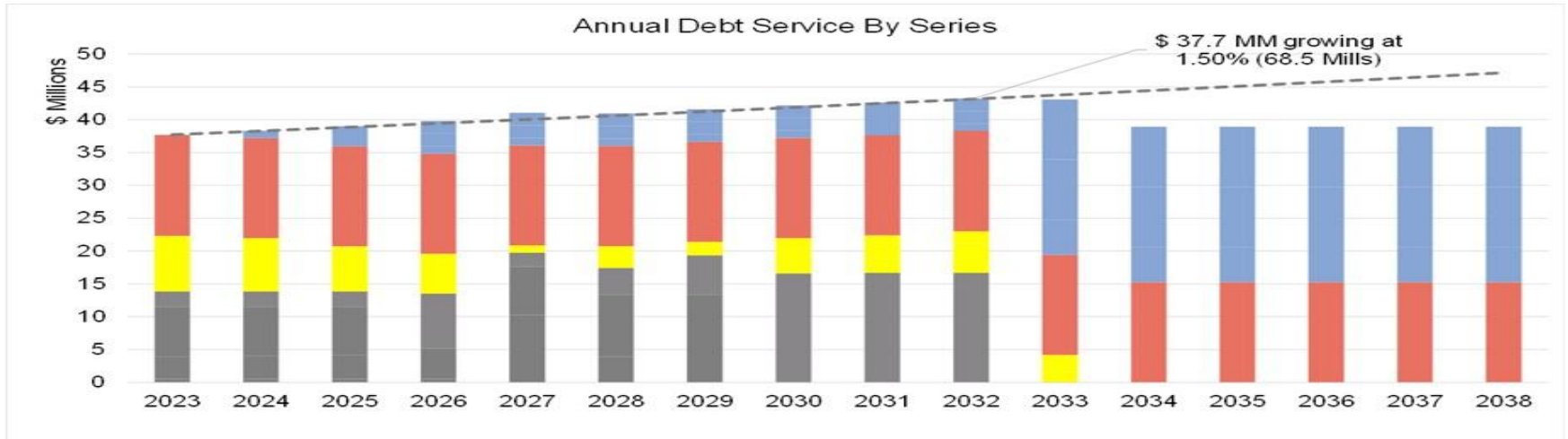


Gray - Previous Debt
Yellow - Irmo High Debt

Red - Annual Maintenance
Blue - Bond Referendum



Recommendation: Board Facilities Committee meet to consider Option #4



Gray - Previous Debt
Yellow - Irmo High Debt

Red - Annual Maintenance
Blue - Bond Referendum

Alternative Education Programs

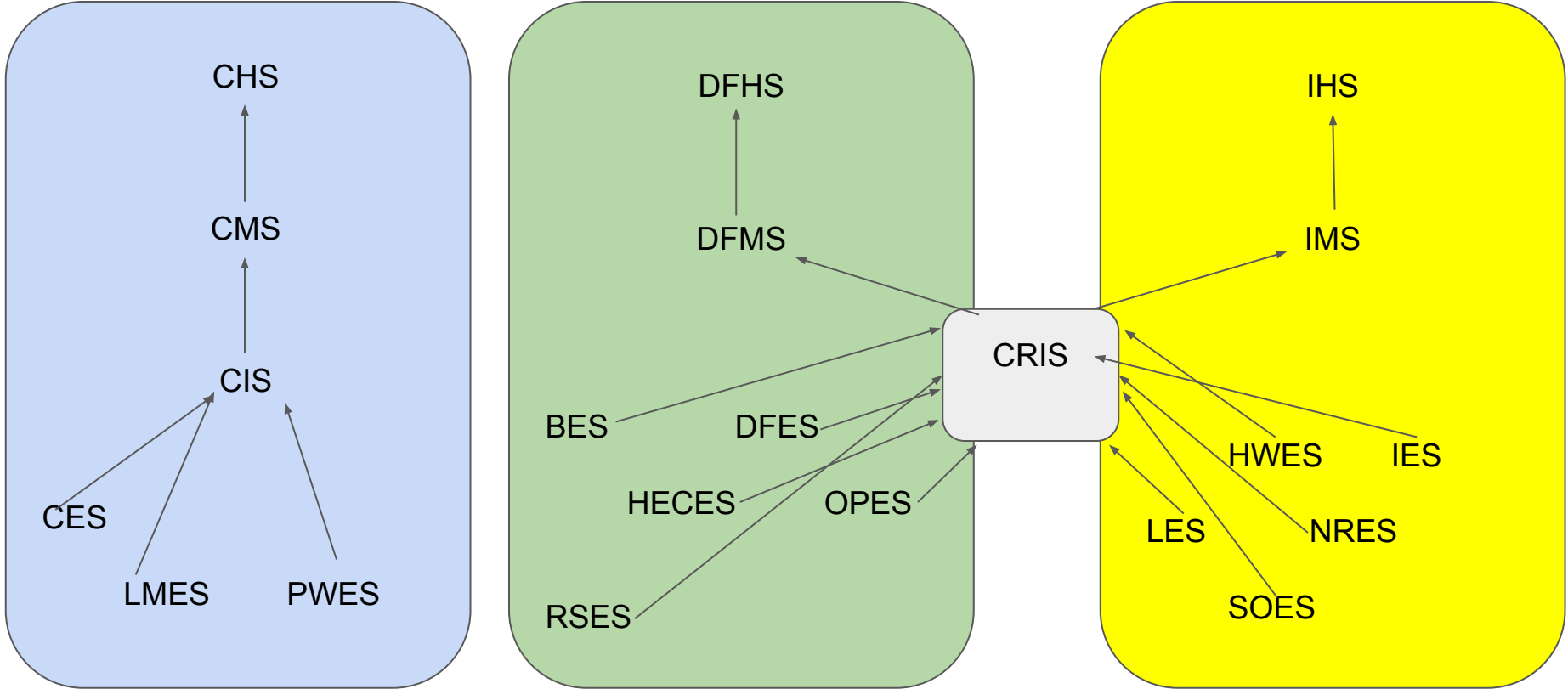
SHHS

Academy for Success

Adult Education

The Center for Advanced Technical Studies

Flexible Innovative Virtual Education (FIVE)



Alternative Education Programs

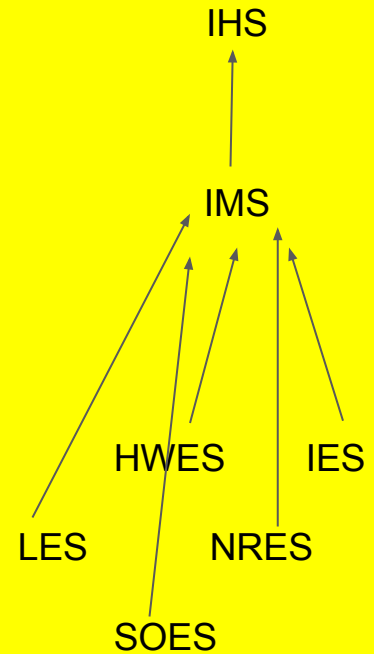
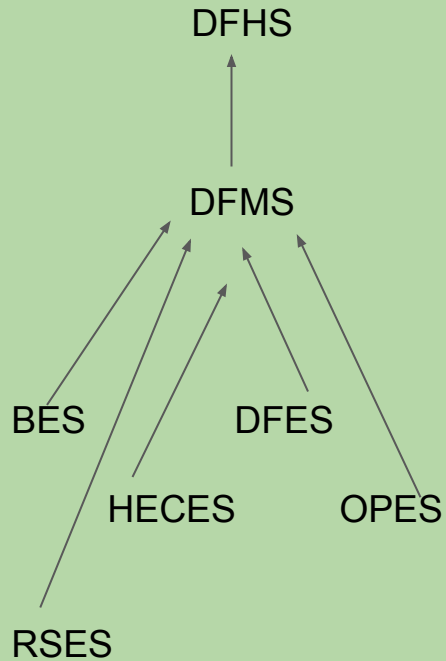
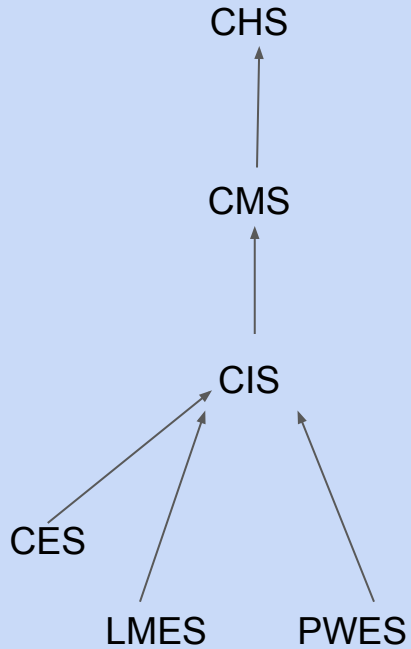
SHHS Academy for Success

Adult Education

Crossroads Early Childhood Center

The Center for Advanced Technical Studies

Flexible Innovative Virtual Education (FIVE)





District 5 Projected PK-12 Enrollment 2012-13 to 2029-30

Elementary School Projections (PK-5)

- Fastest growth at CIS (**5th Grade Portion Only**) (15.9%), IES (14.0%), LES (7.7%), and CES (7.5%)
- Greatest decrease at OPES (-17.6%), and SOES (-13.2%)

Middle & Intermediate School Projections

- Fastest growth at CIS (**6th Grade Portion Only**) (8.5%), and CMS (3.2%)
- Stable enrollment at CRIS (-0.7%)
- Small declines at IMS (-3.5%) and DFMS (-4.6%)

High School Projections

- Fastest growth projected at CHS (21.7%)
- IHS also projected to see significant growth at 20.1% - includes buildout of Dual Enrollment program at about 90 students
- Modest growth at SHHS (3.4% growth)
- DFHS projected to decrease by 10.8% as smaller elementary classes matriculate up into the high school

Alternative Education Programs

SHHS Academy for Success

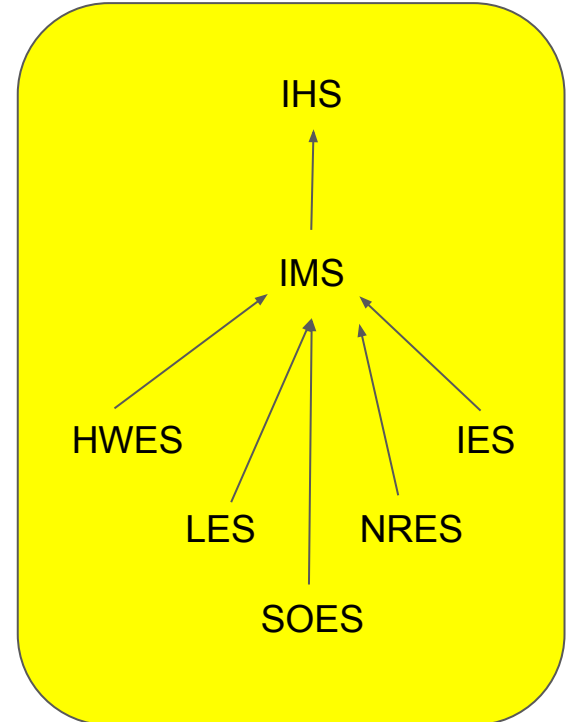
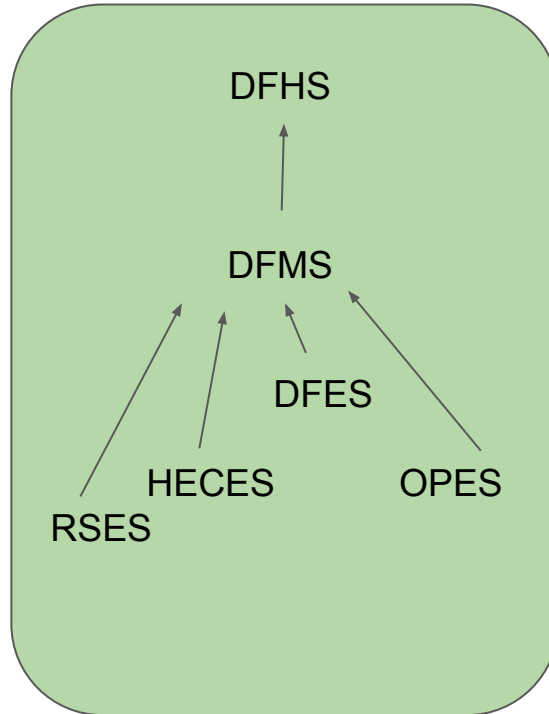
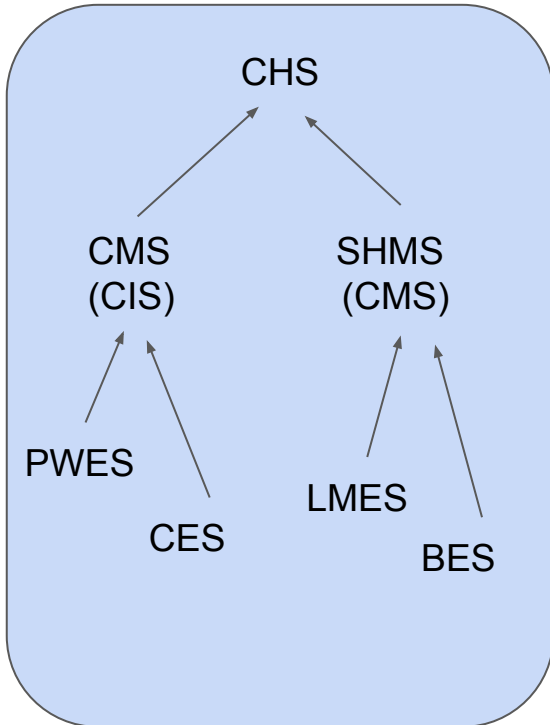
Adult Education

Crossroads Early Childhood Center

The Center for Advanced Technical Studies

Flexible Innovative Virtual Education (FIVE)

PHASE 3 *If Bond Referendum passes and growth continues in Chapin



Alternative Education Programs

Academy for Success

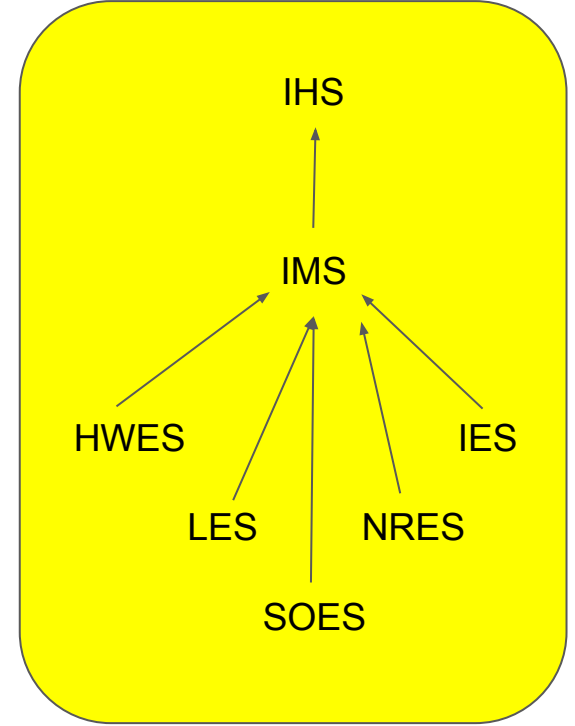
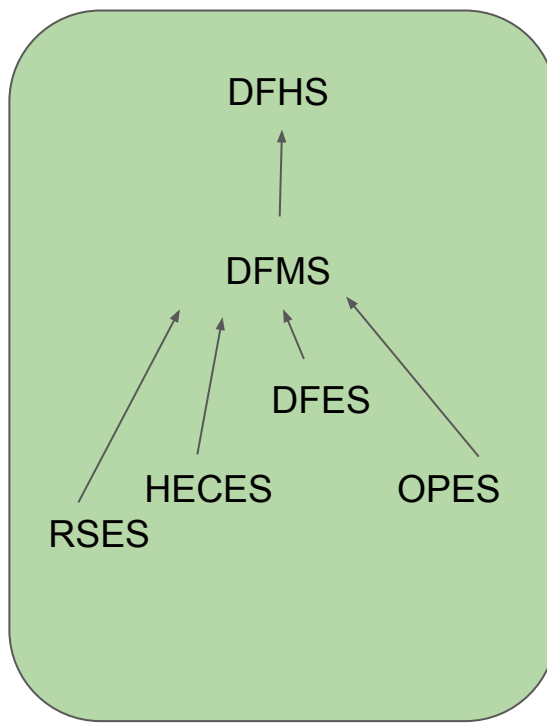
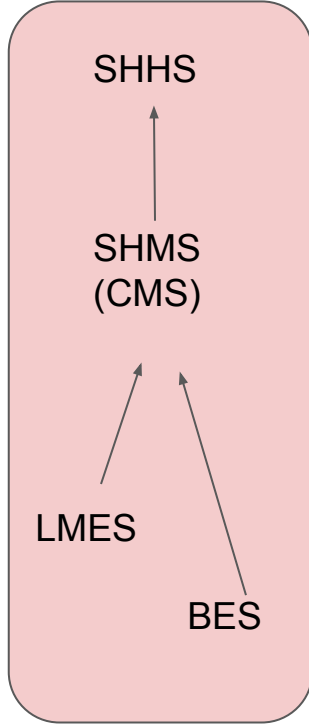
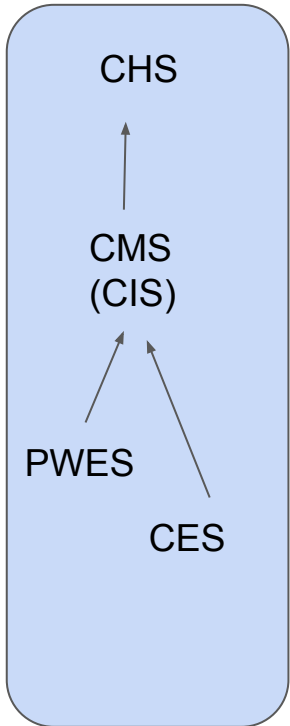
Adult Education

Crossroads Early Childhood Center

The Center for Advanced Technical Studies

Flexible Innovative Virtual Education (FIVE)

PHASE 4 *If Bond Referendum passes and growth continues in Chapin





Recommendation: Board Facilities Committee meet to consider the following:

Option 1	Take no action on the remaining poor or fair Rated Facilities	Cost: Unknown
Option 2*	Borrow Above our Millage	\$275 Million** and Increase Taxes Addresses All D5LR Schools
Option 3*	Borrow At our Millage	\$130 Million** and Maintain Tax Rate (69.5 Mills) Addresses All D5LR Poor and Fair Facilities
Option 4*	Borrow Below our Millage	\$130 Million**, Lower Taxes, Longer Payoff time and More Interest (68.5 Mills) Addresses All D5LR Poor and Fair Facilities

*OPTIONS 2, 3 and 4 WILL REQUIRE A Bond Referendum

** Amounts are estimates of cost and do not include inflation

Alternative Education Programs

SHHS Academy for Success

Adult Education

Crossroads Early Childhood Center

The Center for Advanced Technical Studies

Flexible Innovative Virtual Education (FIVE)

