



NEW ELEMENTARY SCHOOL #13

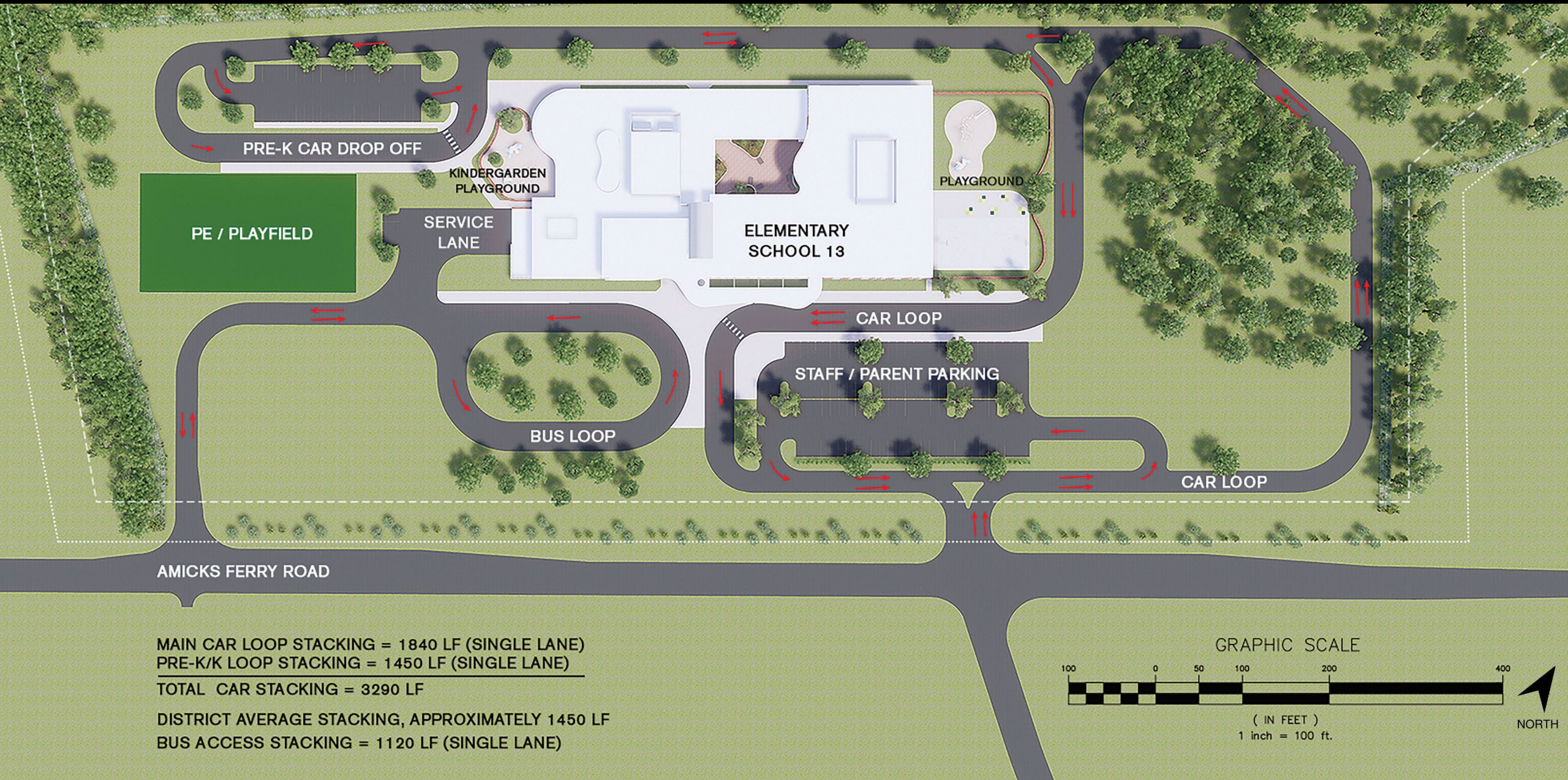
Schematic Design- Board Update

FEBRUARY 11, 2019



QUACKENBUSH ARCHITECTS + PLANNERS

ELEMENTARY SCHOOL 13 SITE PLAN



MAIN CAR LOOP STACKING = 1840 LF (SINGLE LANE)

PRE-K/K LOOP STACKING = 1450 LF (SINGLE LANE)

TOTAL CAR STACKING = 3290 LF

DISTRICT AVERAGE STACKING, APPROXIMATELY 1450 LF

BUS ACCESS STACKING = 1120 LF (SINGLE LANE)

GRAPHIC SCALE



(IN FEET)
1 inch = 100 ft.



ELEMENTARY SCHOOL 13 FIRST FLOOR PLAN



ELEMENTARY SCHOOL 13 SECOND FLOOR PLAN



ELEMENTARY SCHOOL 13 FRONT ELEVATION



ELEMENTARY SCHOOL 13 FRONT PERSPECTIVE



ELEMENTARY SCHOOL 13 VIEW FROM NORTHWEST



ELEMENTARY SCHOOL 13 BIRDSEYE OF COURTYARD



ELEMENTARY SCHOOL 13 COURTYARD



ELEMENTARY SCHOOL 13 LOBBY



ELEMENTARY SCHOOL 13 KINDERGARTEN EXTENDED LEARNING



ELEMENTARY SCHOOL 13 FIRST FLOOR EXTENDED LEARNING



ELEMENTARY SCHOOL 13 MEDIA CENTER



ELEMENTARY SCHOOL 13 PROJECT SCHEDULE

