



District Five of Lexington & Richland Counties Construction Update September 23, 2013

Chapin High School

Project Manager:	Forrest L. King
Completion:	December 2014
Architectural Firm:	Stevens & Wilkinson
Contractor:	China Construction America of S.C., Inc.
Construction Budget (Incl. Contingency):	\$48,855,188.00
Committed Construction Cost:	\$46,315,754.00
Capital Renewal Incorporated in Project:	\$5,264,000.00

Project Description:

Construct a new classroom addition and bring the student capacity to 1,700 students. Construct new gymnasium with stage. Expand the cafeteria and media center. Site upgrades to include new practice fields and an end zone athletic facility. Improve parking and traffic flow.

Status:

- Work is continuing on the Strings Building.
- Cleaning out the gym floor area in area 'A' to make preparations for the concrete slab installation.
- The ceiling grid installation is in progress at the two story classroom addition Areas 'B' and 'C'.
- The first overhead inspection for Area B & C is tentatively slated for September 26th.
- The final inspection for the Field House is tentatively set for September 26th.
- The connector from the cafeteria to area 'H' is in progress. Getting ready for the slab and step concrete pours.
- The sprigging at the practice football and soccer fields is growing extremely well.
- Site grassing and landscaping is in progress across the project.
- The Final Inspection by OSF for students passed on August 19th for Area 'H' renovations on both floors.

Achievements/Key Issues:

- The capital renewal accomplished as part of this project includes: clock system, fire alarm, hardware systems, HVAC, PA/intercom, roofing and interior finishes.
- The worst area of discolored brick has been stained.

Schedule/Budget Issues:

- Due to continuous delays, the final completion date of the project will be December 2014.
- A wet winter, spring and summer has impacted the project schedule. Project Team is working to make up time wherever possible.

Description	Early Start	Early Finish	2012					2013					2014					2015					2016									
			Gantt chart showing project progress from 2012 to 2016. A vertical red line indicates the current date, which is approximately mid-2013.																													
ISSUE NTP	03JAN12 A		ISSUE NTP																													
AREAS 'B' - NEW TWO STORY	16JAN12 A	20DEC13	AREAS 'B' - NEW TWO STORY CLASSROOM																													
AREA 'C' - NEW TWO STORY	16JAN12 A	20DEC13	AREA 'C' - NEW TWO STORY																													
AREA 'A' - NEW GYM	11JUN12 A	21MAY14	AREA 'A' - NEW GYM																													
NEW FIELD HOUSE	11MAR13 A	26SEP13	NEW FIELD HOUSE																													
NEW STRINGS ROOM	20MAR13 A	29OCT13	NEW STRINGS ROOM																													
NEW ART & COMPUTER ROOMS	01MAY13 A	24JUL14	NEW ART & COMPUTER ROOMS																													
AREA 'H' - CLASSROOM RENOVATIONS	07JUN13 A	16AUG13 A	AREA 'H' - CLASSROOM RENOVATIONS																													
AREA 'D' - ELEVATOR CONNECTOR	11JUN13 A	01AUG14	AREA 'D' - ELEVATOR CONNECTOR																													
AREA 'G' - FINE ARTS RENOVATIONS	21JAN14 A	06AUG14	AREA 'G' - FINE ARTS RENOVATIONS																													
AREA 'D' - AUX. GYM RENOVATIONS	03MAR14 *	08MAY14	AREA 'D' - AUX. GYM RENOVATIONS																													
AREA 'E' - CAFETERIA RENOVATIONS	02JUN14	28AUG14	AREA 'E' - CAFETERIA RENOVATIONS																													
AREA 'F' - GYM/NEW CAFE RENOVATIONS	02JUN14	15SEP14	AREA 'F' - GYM/NEW CAFE RENOVATIONS																													

**MILESTONE SCHEDULE
CHAPIN HIGH SCHOOL**

-  Early bar
-  Progress bar
-  Critical bar
-  Summary bar
-  Start milestone point
-  Finish milestone point

Chapin High School



Site Aerial along Columbia Avenue



Site Aerial towards Columbia Avenue

Chapin High School



Gym Slab Prep



Two Story Classroom Bldg.
from Field House

Chapin High School

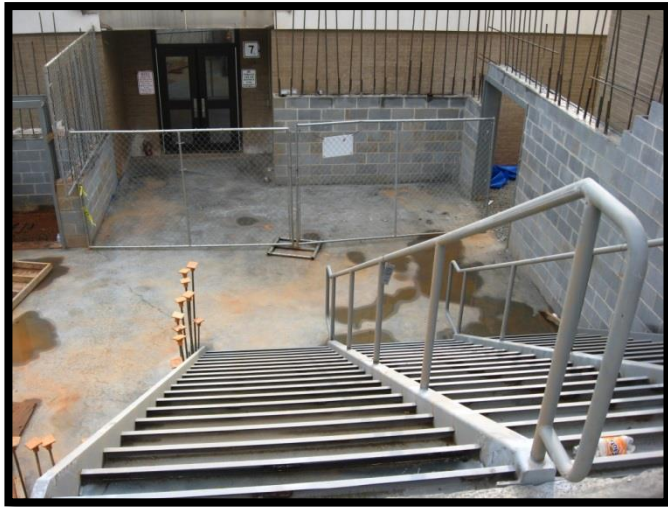


Field House looking towards
CHS

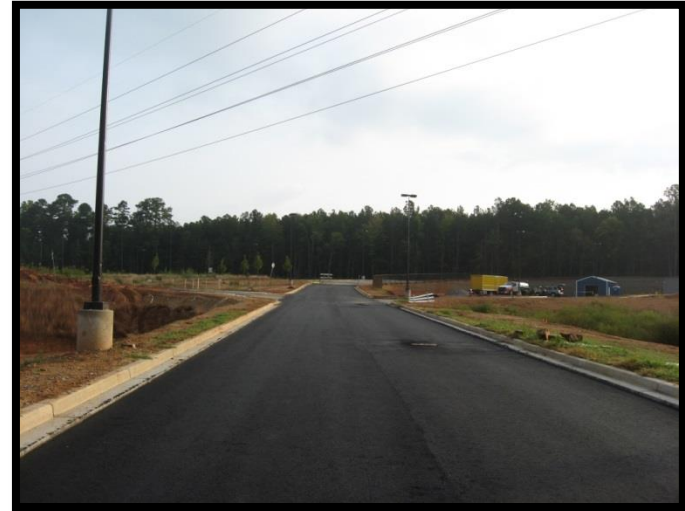


Field side face of Field House

Chapin High School



Cafeteria Connector towards
Existing Building



Circulation Road towards
Soccer Practice Field

Chapin High School



Brick Staining - BEFORE



Brick Staining - AFTER

Spring Hill High School

Project Manager:	Forrest L. King
Completion:	August 2013
Architectural Firm:	McMillan Smith & Partners
High School #4 Contractor:	Edcon, Inc.
Construction Budget (Incl. Contingency):	\$64,111,169.00
Committed Const. Cost (Incl. CATE & Site):	\$62,843,368.00

Project Description:

Construct a new 267,000 square foot high school with a capacity of 1,700 students.

Status:

- Ceiling tile is complete in all areas of the building.
- The Kitchen is serving food to students.
- The Multi-Purpose Room flooring has been installed.
- Exterior sidewalks, paving and canopies around the high school are complete.
- Exterior landscaping, irrigation and plantings are in progress.
- The Final Inspection by OSF for students passed on August 19th.
- Punchlist work is in progress throughout the building.

Achievements/Key Issues:

- The City of Columbia redefined the first phase of the City Capital Improvement Project to run the 24" water line from the Waterfall Subdivision to the CATE Center.

Schedule/Budget Issues:

- The final completion date for the New High School has been impacted by permitting and weather delays.

Description	Early Start	Early Finish	2012												2013												2014												2015
			F	M	A	M	J	J	A	S	O	N	D	J	F	M	A	M	J	J	A	S	O	N	D	J	F	M	A	M	J	J	A	S	O	N	D	J	
ISSUE NTP	17FEB12*		◆ ISSUE NTP																																				
CONSTRUCTION	17FEB12	02SEP13	 CONSTRUCTION																																				
SUBSTANTIAL COMPLETION		02SEP13	◆ SUBSTANTIAL COMPLETION																																				



**MILESTONE SCHEDULE
SPRING HILL HIGH SCHOOL**

-  Early bar
-  Progress bar
-  Critical bar
-  Summary bar
-  Start milestone point
-  Finish milestone point

Spring Hill High School



Site Aerial towards CATE



Site Aerial from Broad River
Road

Spring Hill High School



Kitchen Serving Line



Main Entrance

Spring Hill High School



Teacher Parking towards School



Front of School near
Cafeteria

Spring Hill High School



Courtyard at Classroom Wings



Courtyard at Cafeteria

Dutch Fork High School

Project Manager:	Joe Huggins
Completion:	Summer 2014
Architectural Firm:	Stevens & Wilkinson
Contractor:	Contract Construction
Construction Budget (Incl. Contingency):	\$15,347,815.00
Committed Const. Cost:	\$14,662,276.00

Project Description:

Construct a new health science building and a new visitor's concessions/restroom facility. Construct a new middle/high connector road to improve traffic flow along with additional parking. Various other athletic improvements.

Status:

- Visitor's Concessions Stand & Bleachers have reached substantial completion.
- New driveways for Middle School & High School are now in use and have improved the traffic jam problems during pickup & drop off times.
- Progress on Softball & Baseball Press Boxes continues.
- Blockfill & ceiling grid underway on 1st Floor of the Health Science Building
- Overhead rough-in continues on 2nd Floor of the Health Science Building.
- Block work is reaching bearing height on the 3rd Floor of the Health Science Building

Achievements/Key Issues:

- Visitor's Concession was successfully completed prior to first home game.

Schedule/Budget Issues:

- Project was delayed due to permitting.
- A wet winter, spring and summer has impacted the project schedule. Project Team is working to make up time wherever possible.

Description	Early Start	Early Finish	2012	2013	2014	2015	2016	2017
Issue NTP	23OCT12 A		◆ Issue NTP					
Parking Expansion In Front of School	23OCT12 A	02JAN13 A	■ Parking Expansion In Front of School					
Construct Health Science Fieldhouse	23OCT12 A	19DEC13	■ Construct Health Science Fieldhouse					
Construct New Entry/Circulation Drives	23OCT12 A	30AUG13 A	■ Construct New Entry/Circulation Drives					
Concessions & Bleacher Addition	17DEC12 A	30AUG13 A	■ Concessions & Bleacher Addition					
Drive and Loop Behind Visitor Bleachers	06JUN13 A	21MAR14	■ Drive and Loop Behind Visitor Bleachers					
New Press Box & Bleachers at Softball & Baseball	06JUN13 A	03DEC13	■ New Press Box & Bleachers at Softball & Baseball					
Off Site Road Improvements	06JUN13 A	30AUG13 A	■ Off Site Road Improvements					
Interior Renovations	20DEC13	21APR14	■ Interior Renovations					

**MILESTONE SCHEDULE
DUTCH FORK HIGH SCHOOL**

- Early bar
- Progress bar
- Critical bar
- Summary bar
- ◆ Start milestone point
- ◆ Finish milestone point

Dutch Fork High School



Site Aerial



Health Science Aerial

Dutch Fork High School



New Visitor's Concessions & Bleachers



Pressbox from Health Science

Dutch Fork High School



Health Science Building



Concessions Covered Area

Irmo High School

Project Manager:	Joe Huggins
Completion:	August 2014
Architectural Firm:	Stevens & Wilkinson
High School #4 Contractor:	China Construction America of S.C., Inc.
Total Construction Budget (Incl. Contingency):	\$24,639,240.00
Committed Const. Cost (Incl. Site):	\$23,882,038.00

Project Description:

Construct a new 600 seat auditorium and a new field house. Interior renovations to allow for removal of portable classrooms.

Status:

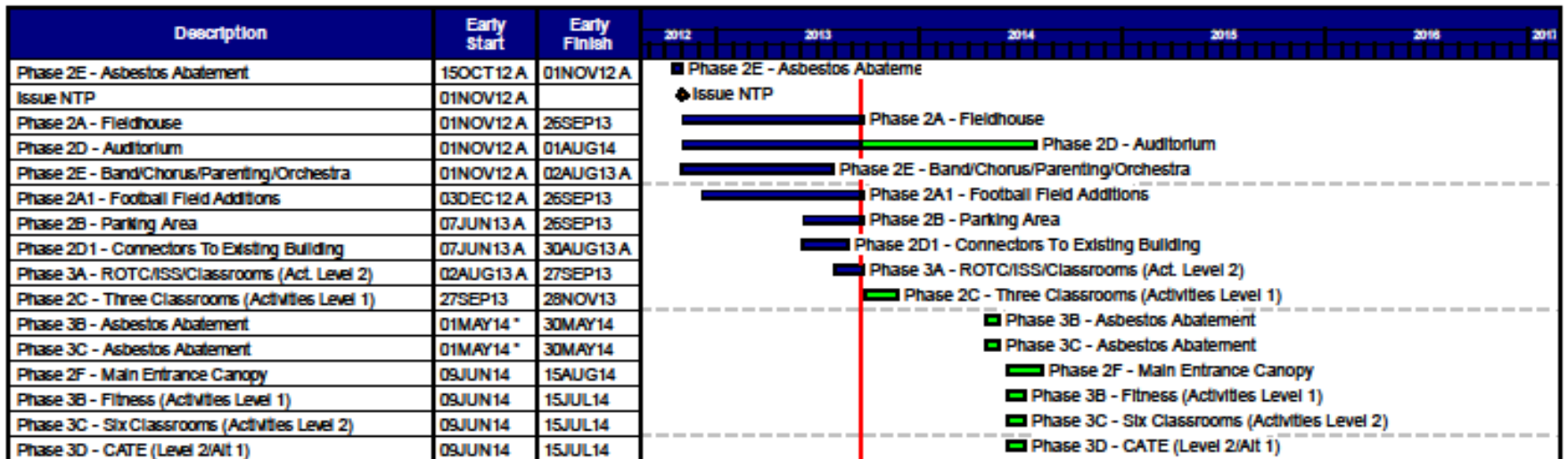
- Finishes are ongoing at the Field House.
- Metal wall panel installation is ongoing at the Field House.
- The final inspection for the Field House is tentatively set for September 26th.
- Punch list items are being corrected at CATE 1 and CATE 2 areas.
- Finishes are being installed at the Engineering/ROTC area.
- Building wall placement, foundations and underground rough in is ongoing at the Auditorium.
- Stadium upgrades are ongoing.

Achievements/Key Issues:

- The OSF Final Inspection at CATE 1 and CATE 2 passed successfully.

Schedule/Budget Issues:

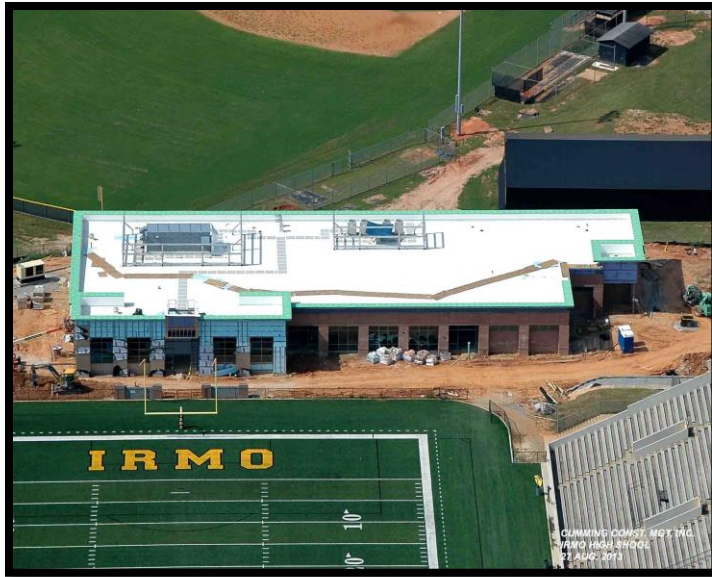
- Project was delayed due to unforeseen site conditions. This includes a large debris pile that was buried at the Auditorium area.
- A wet winter and spring has impacted the project schedule. Project Team is working to make up time wherever possible.



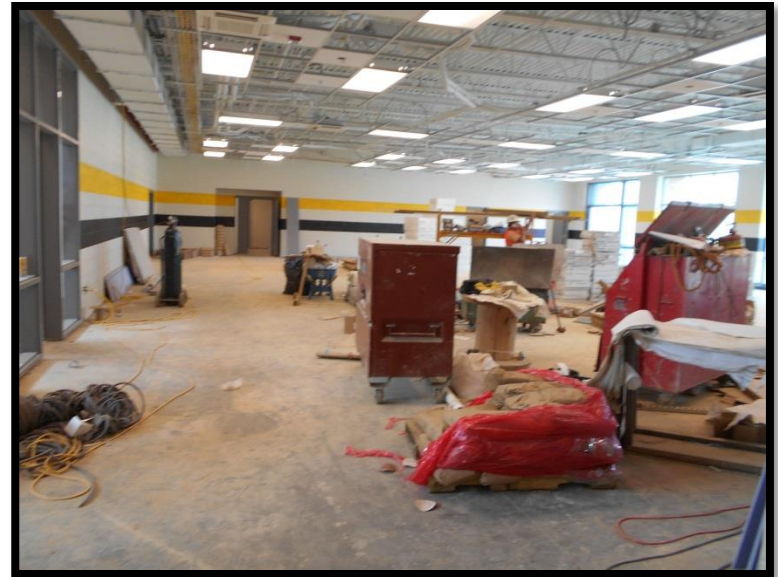
**MILESTONE SCHEDULE
IRMO HIGH SCHOOL**



Irmo High School



Field House Aerial



Field House Weight Room

Irmo High School



Engineering/ROTC Renovation

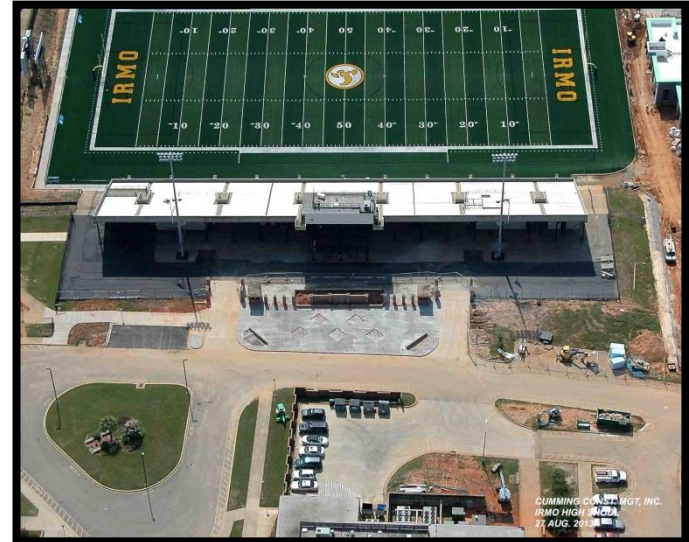


Aerial of Auditorium towards St. Andrews

Irmo High School



Auditorium Structure



Stadium Upgrades