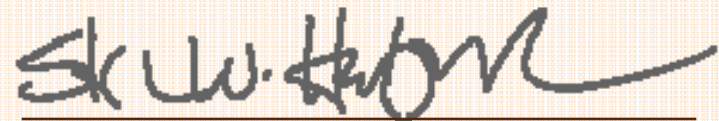


VISION 2015

Where do we want to be four years from now?
How do we get there from here?

UPDATE #11



Stephen W. Hefner, Ed.D.
Superintendent
Lexington-Richland Five

November 19, 2012

“Where do we want to be in four years?”

By 2015, Lexington-Richland Five will not only continue to be recognized as a “World Class” school district here in the Midlands and in South Carolina, but will also be recognized as a “World Class” school district all across our nation and around the world.

“World Class”

...being a system where teachers have the setting and resources they need to do their best work and students have the setting and instruction they need to perform at their optimum levels and to compete globally.

How do we get there from here?

We must move forward with our
new facilities and facilities
improvement program.

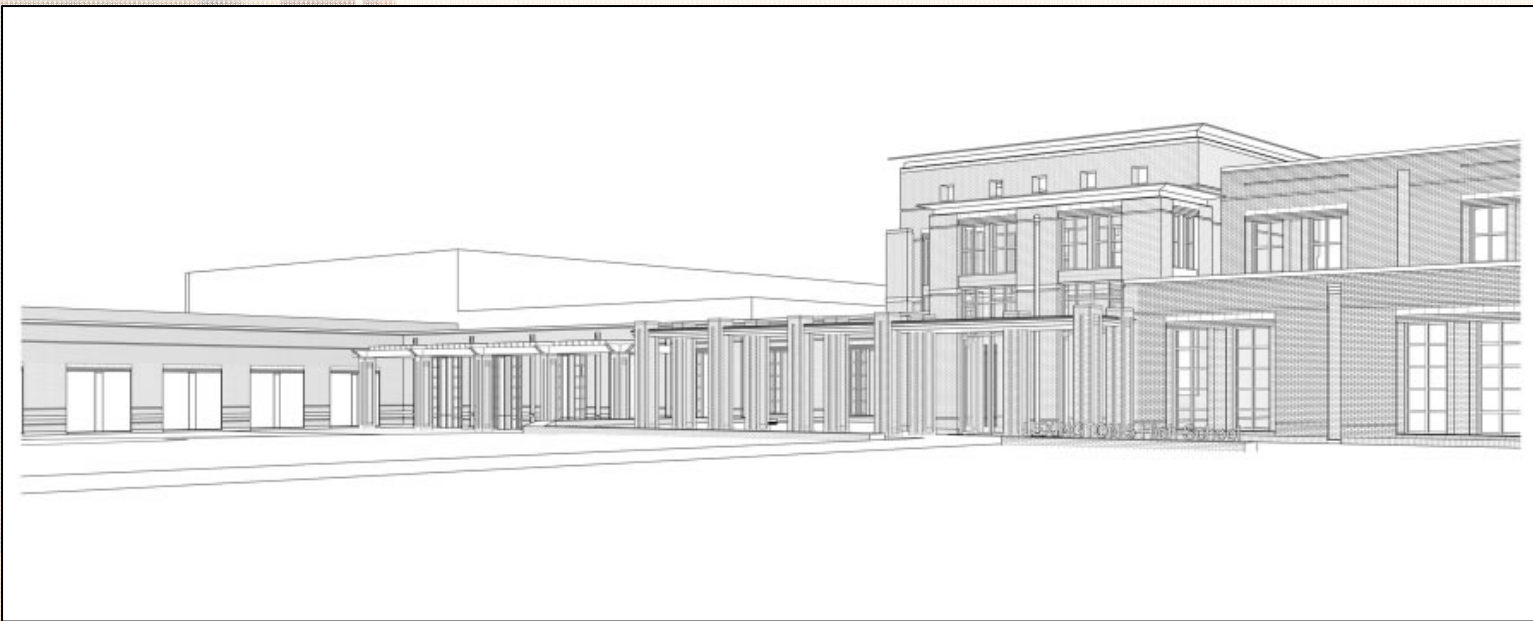
1. RENOVATE AND EXPAND CHAPIN HIGH ON ITS PRESENT SITE



Stevens & Wilkinson
ARCHITECTURE ENGINEERING INTERIORS

district five
OF LEXINGTON & RICHLAND COUNTIES

**2. BUILD A NEW HIGH SCHOOL
ON THE SPRING HILL SITE
AND OPEN IT AS A
MAGNET HIGH SCHOOL**



3. MAKE SIGNIFICANT IMPROVEMENTS TO THE PHYSICAL FACILITIES AT IRMO HIGH AND DUTCH FORK HIGH

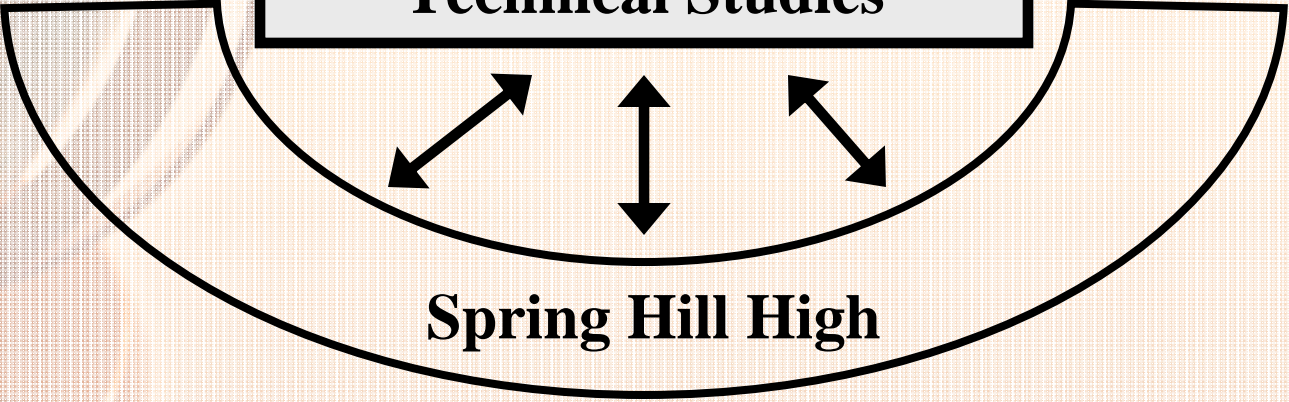


5. EXPAND MAGNET AND CHOICE OPTIONS THROUGHOUT THE DISTRICT

- Make optimum use of existing space
- Enhance the ability of each school to compete effectively with other schools in our district and community
- Meet the unique educational needs of our students

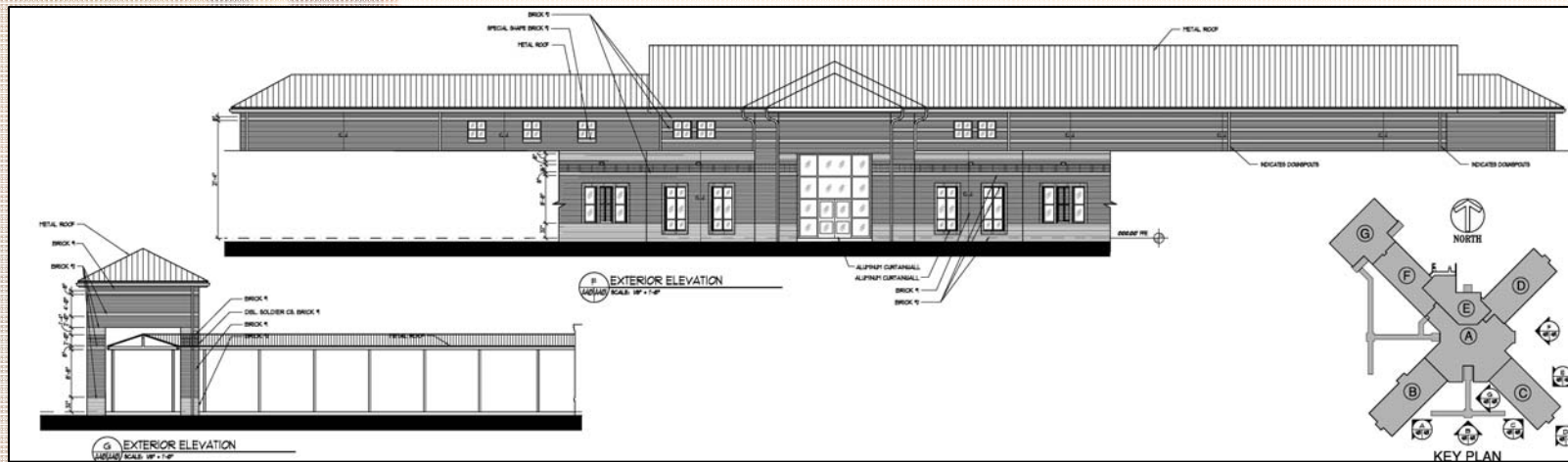


**The Center for Advanced
Technical Studies**



Spring Hill High

4. BUILD THE NEW ELEMENTARY SCHOOL

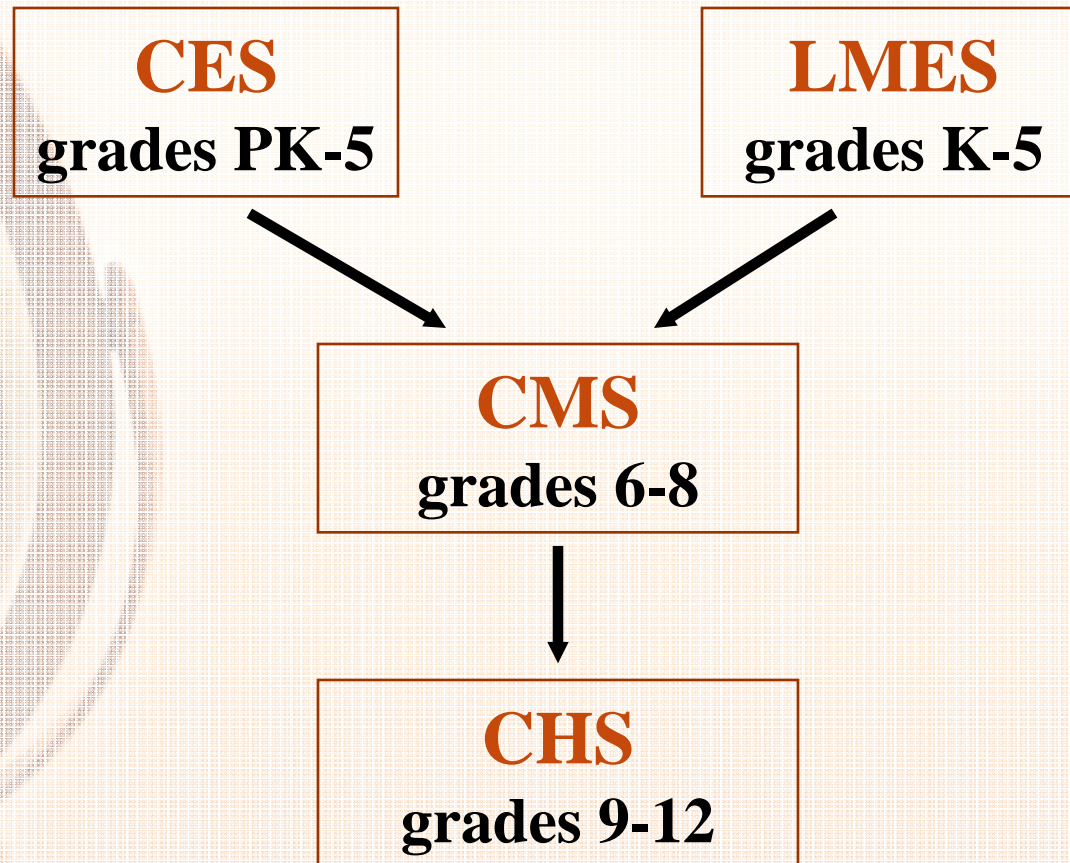


REVISED Step #4

BUILD THE NEW MIDDLE SCHOOL

**Building the
new middle school will provide
the best educational opportunities for
our students and effect the greatest
return on the
investment of our limited resources.**

CURRENT



Note: Some students who are zoned to BES are zoned to CMS

WITH NEW MIDDLE SCHOOL

CES
grades PK-4

LMES
grades K-4

CMS
grades 5-6

New Middle
grades 7-8

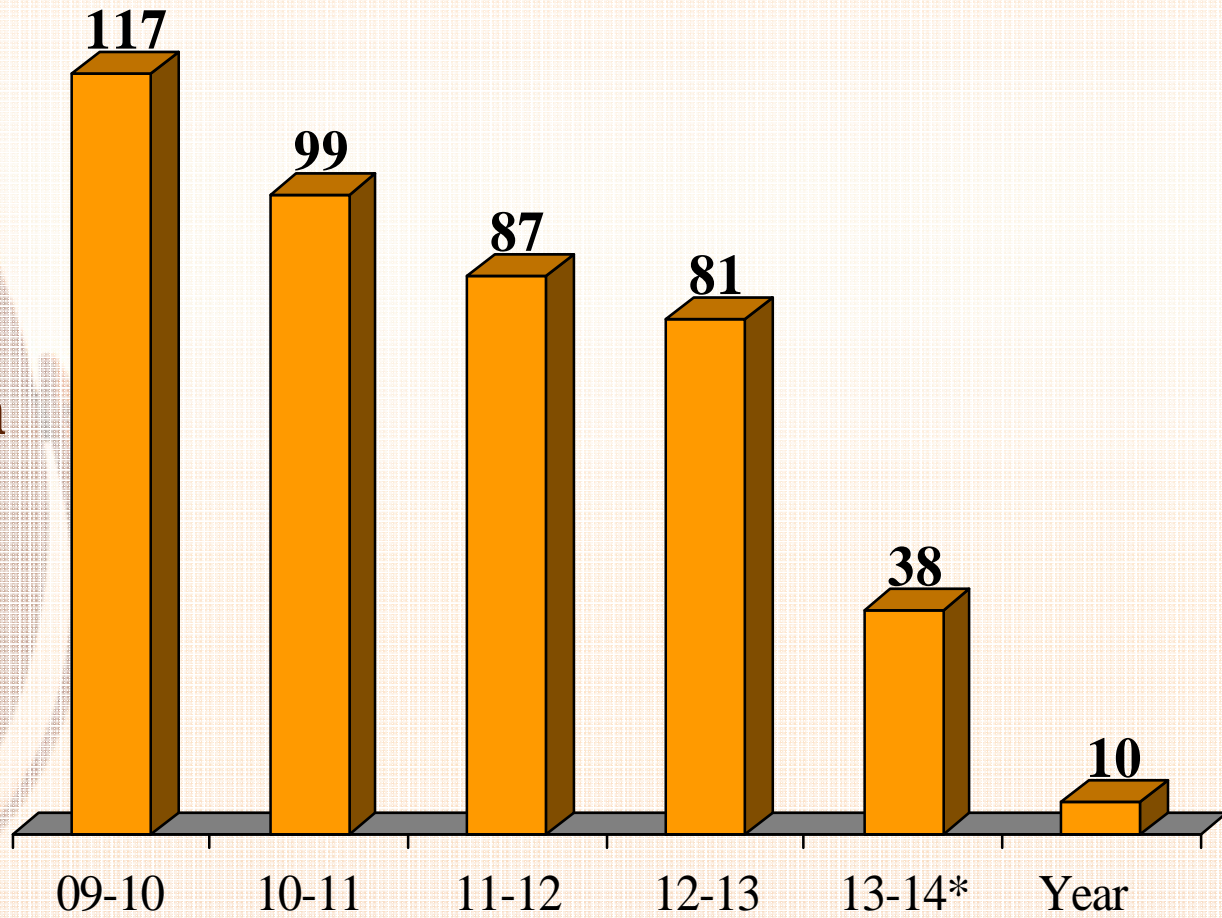
CHS
grades 9-12

Note: BES who are zoned to CMS would move to CMS for 5th grade

WHY?

- Addresses overcrowding at LMES, CES and CMS**
- Maintains existing academic excellence in affected schools**
- Prepares for the ongoing growth in enrollment in the Chapin cluster**
- Decreases the number of portables needed for instruction at BES, LMES, CES and CMS**
- Allows for more effective utilization of existing space**
- Preserves existing attendance zone lines**

Portables Used For Instruction



Year
MS5
opens*

*PROJECTED

“...we cannot devalue the educational experience that we are known for because that would devalue the promise that we have made *to our students, their parents, and our community*...the quality that has become the cornerstone *of our district* cannot be allowed to recede *and, in fact, the quality must be enhanced.*”

--Paraphrased from Dr. Harris Pastides
President, University of South Carolina
“State of the University Address,” Sept. 9, 2011

Next Meeting:

- specific impact at individual schools**
- projected cost**
- plan for funding**
- proposed timeline**
- identification of remaining major facility needs**