

2012 10th Day Enrollment Report



Presented to the School Board
September 10, 2012



Total Enrollment: 16,615



Enrolled in PowerSchool on the 10th day of school.



All grades (PK-12)



All Students regardless of funding source



State EFA Funded Enrollment: 16,279



Enrolled in PowerSchool on the 10th day of school.



Grades K – 12 only



EFA State Funded students only

Key Points



Difference between Enrollment and Average Daily Membership



State funding determined by the 135-day Average Daily Membership



K-12 State funded 10th day enrollment down 75 students from last year.



Slight decrease (38 students) in PK-12 total enrollment compared to last year.

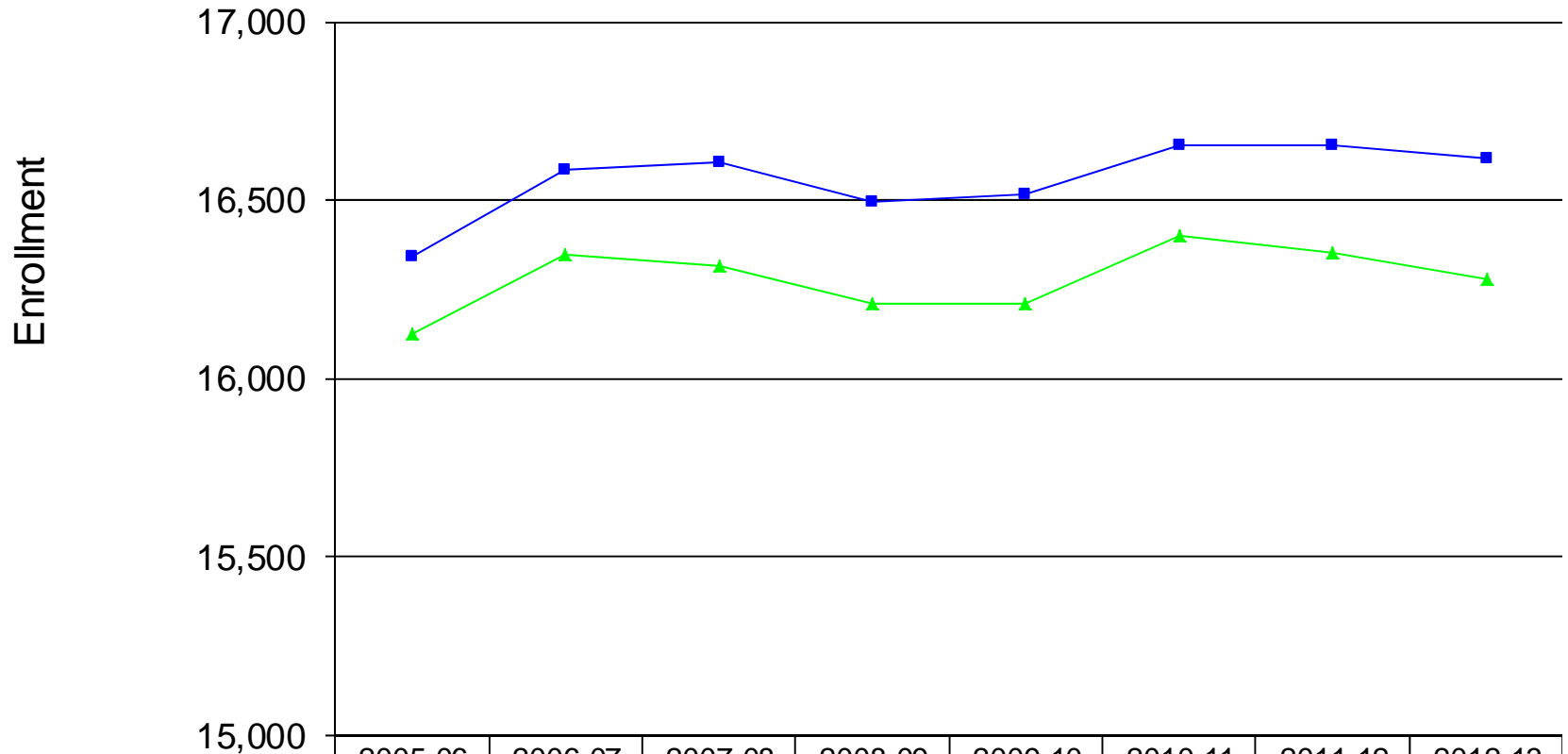


Within 5 students of projections

Exhibit C from Board Packet

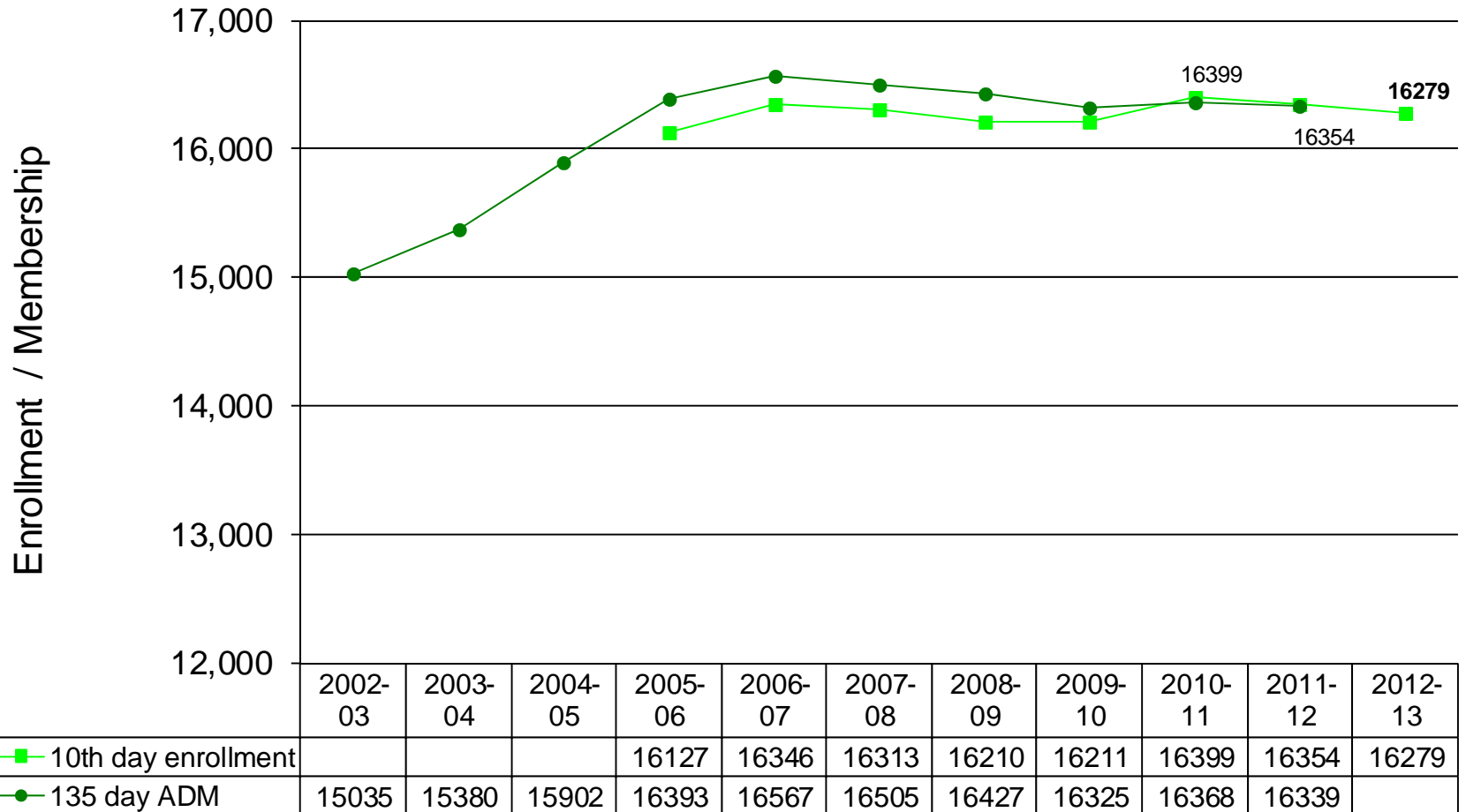
Enrollment on the 10th Day of School: September 4, 2012																		
School	K	1	2	3	4	5	6	7	8	9	10	11	12	Total EFA Funded K-12	Pre-K	Non-state funded PK	Non-state funded k-12	Total Enrollment
Ballentine Elementary School	104	122	120	115	135	122	0	0	0	0	0	0	0	718	0	7	0	725
Chapin Elementary School	128	131	129	147	150	137	0	0	0	0	0	0	0	822	20	20	0	862
Chapin High School	0	0	0	0	0	0	0	0	0	349	340	341	326	1356	0	0	0	1356
Chapin Middle School	0	0	0	0	0	0	356	367	394	0	0	0	0	1117	0	0	0	1117
CrossRoads Middle School	0	0	0	0	0	0	946	0	0	0	0	0	0	946	0	0	0	946
Dutch Fork Elementary School	85	86	79	89	80	99	0	0	0	0	0	0	0	518	19	0	0	537
Dutch Fork High School	0	0	0	0	0	0	0	0	0	606	559	504	454	2123	0	0	0	2123
Dutch Fork Middle School	0	0	0	0	0	0	0	548	500	0	0	0	0	1048	0	0	1	1049
H E Corley Elementary School	81	88	86	90	78	89	0	0	0	0	0	0	0	512	39	39	0	590
Harbison West Elementary School	58	74	87	92	92	78	0	0	0	0	0	0	0	481	36	9	0	526
Irmo Elementary School	93	77	76	79	86	92	0	0	0	0	0	0	0	503	0	22	1	526
Irmo High School	0	0	0	0	0	0	0	0	0	469	451	413	398	1731	0	0	0	1731
Irmo Middle School	0	0	0	0	0	0	9	441	448	0	0	0	0	898	0	0	0	898
Lake Murray Elementary School	144	148	119	148	161	154	0	0	0	0	0	0	0	874	0	9	1	884
Leaphart Elementary School	81	73	65	70	70	80	0	0	0	0	0	0	0	439	19	0	25	483
Nursery Road Elementary School	82	82	76	83	75	94	0	0	0	0	0	0	0	492	0	23	0	515
Oak Pointe Elementary School	84	101	103	103	129	119	0	0	0	0	0	0	0	639	19	3	0	661
River Springs Elementary School	91	98	106	102	113	118	0	0	0	0	0	0	0	628	0	2	0	630
Seven Oaks Elementary School	73	81	81	59	80	60	0	0	0	0	0	0	0	434	20	2	0	456
District	1104	1161	1127	1177	1249	1242	1311	1356	1342	1424	1350	1258	1178	16279	172	136	28	16615

10 Day-Enrollment Comparison of EFA-funded vs Total students



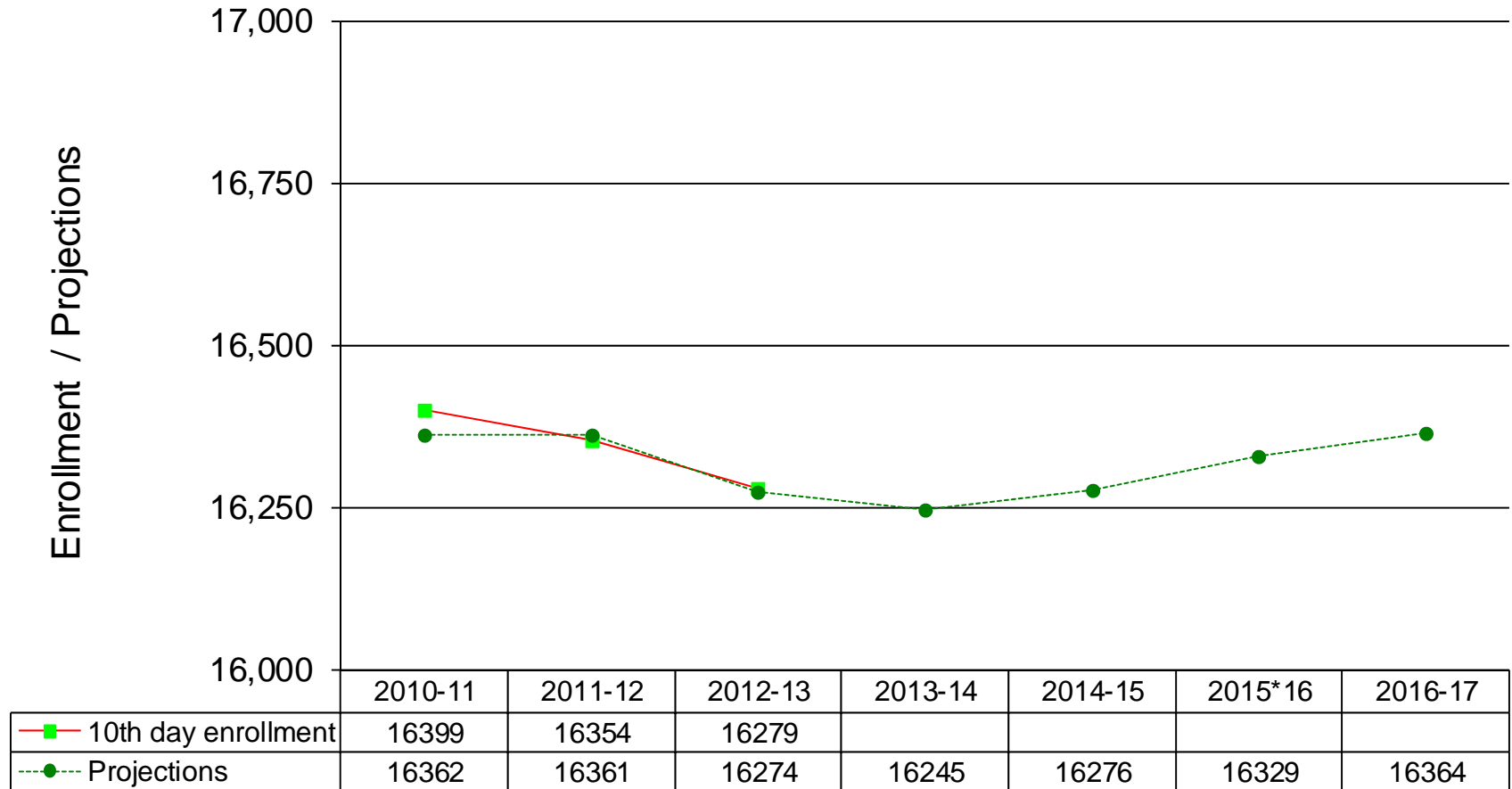
PK-12 Total enrollment	16340	16583	16604	16497	16516	16655	16653	16615
K-12 state-funded enrollment	16127	16346	16313	16210	16211	16399	16354	16279

Trend Information: 10 day enrollment and 135-ADM comparison



K-12 State EFA-funded students only

Trend Information: 10 day enrollment and Projections



K-12 EFA State-funded students only