



# ESEA Waiver Results August 2012

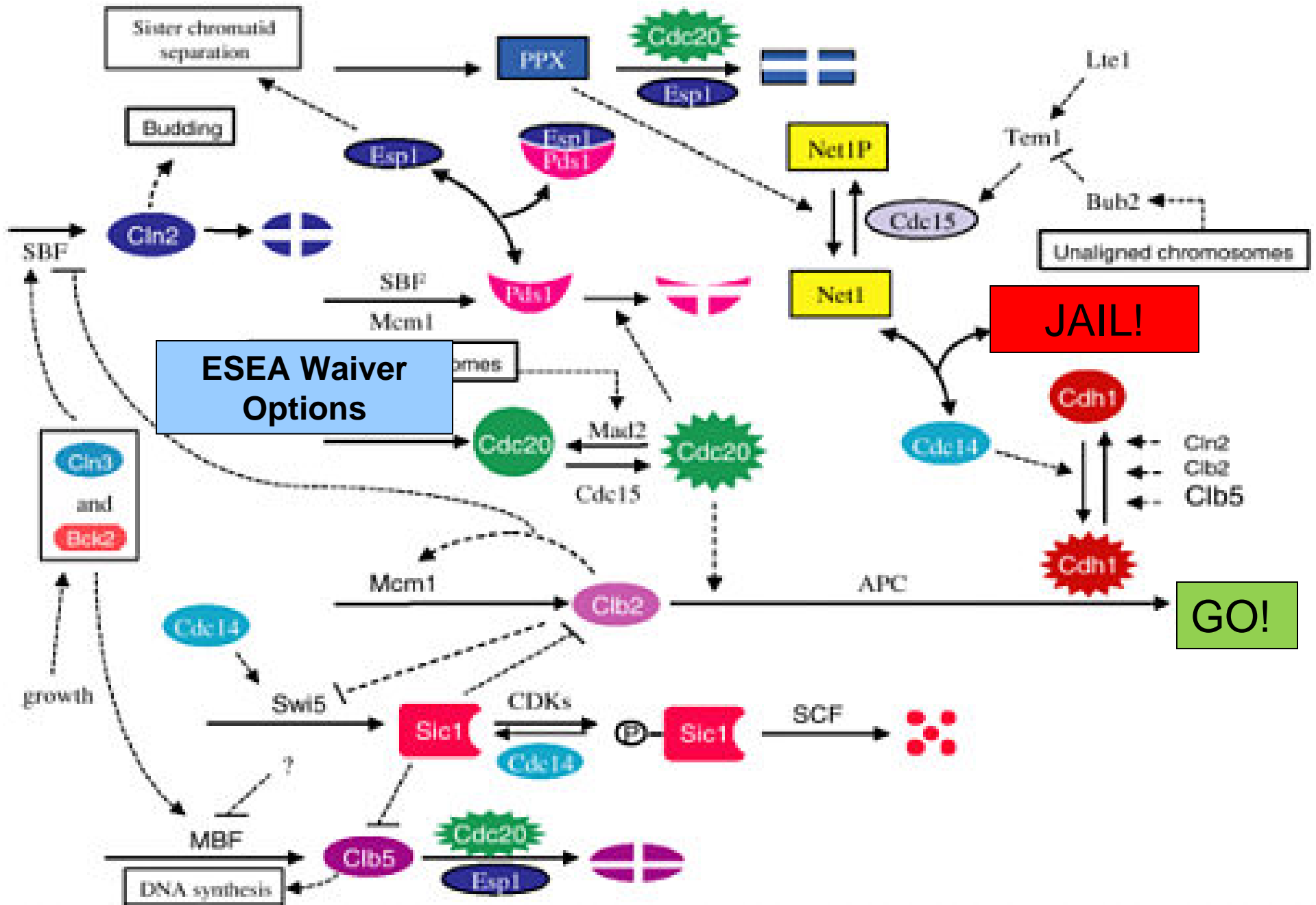
A: 12 School

B: 6 Schools

C: 1 School

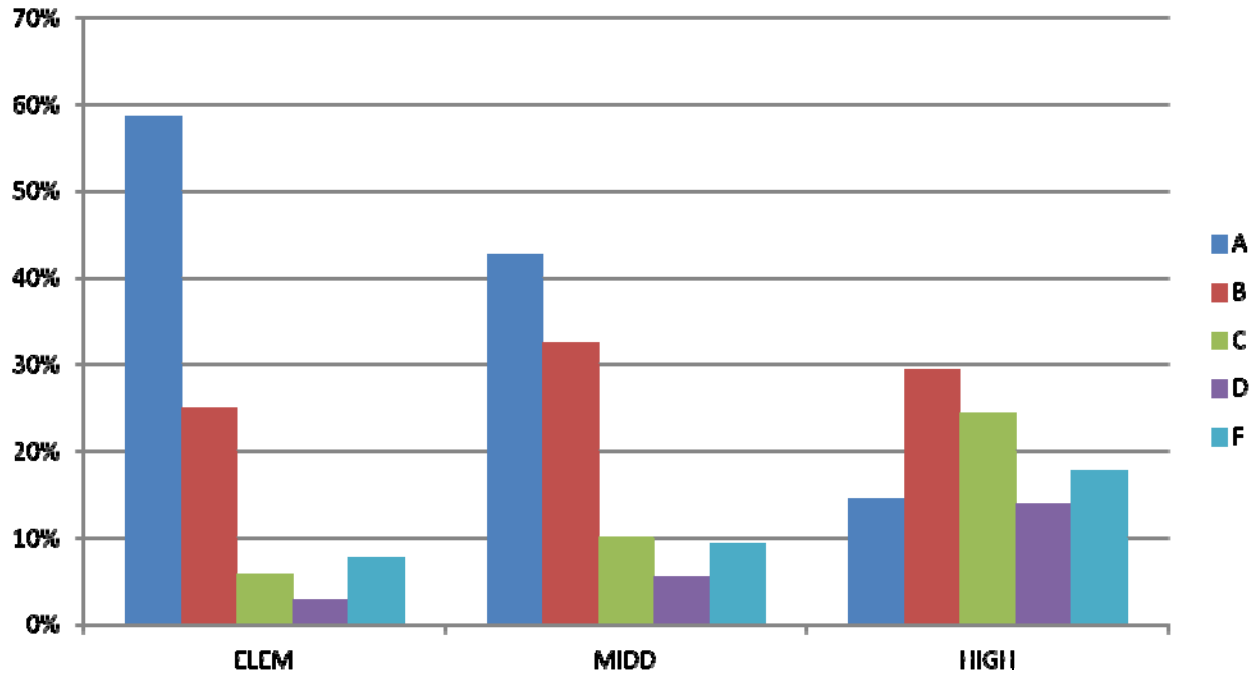
Presented to the School Board, August 13, 2012





Many thanks to Dr. John Segars for this comprehensive view of the AYP methodology!

# Letter Grades: SC Schools



TYPE	A	B	C	D	F	Total
ELEMENTARY	350	149	35	17	46	597
MIDDLE	101	77	24	13	22	237
HIGH	26	53	44	25	32	180
Total	477	279	103	55	100	1014

Excludes “combo” schools or schools that did not receive a grade

# Components of ESEA “Grade”: Elementary and Middle Schools

Percent Tested: At Least 95%

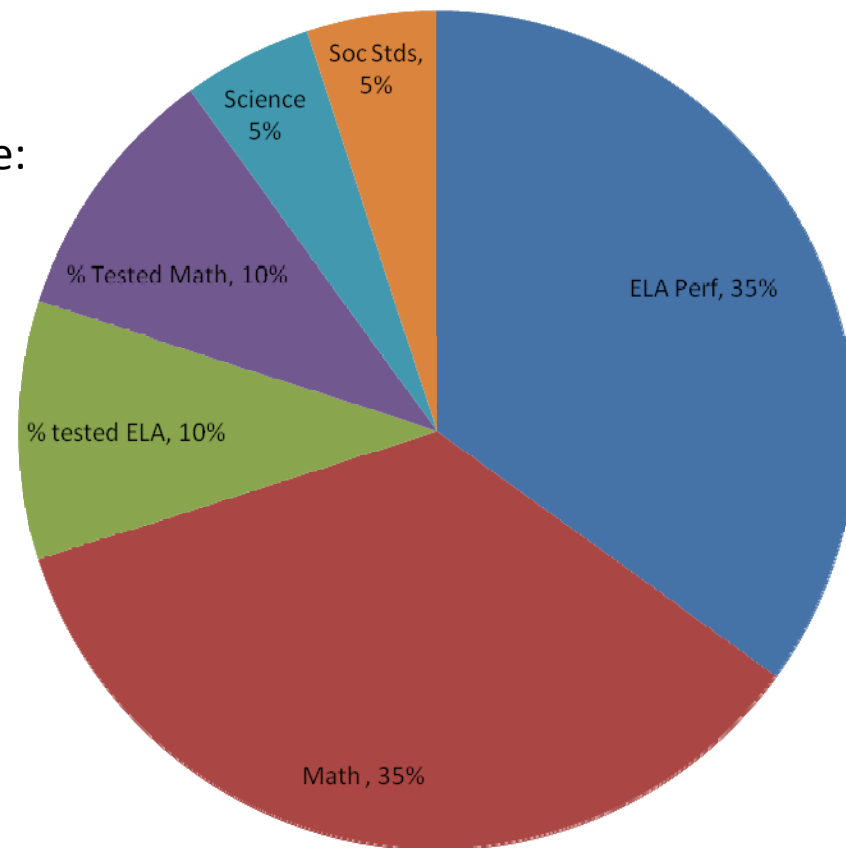
Average PASS Scale Score\* Performance:

Elementary: 630

Middle: 624

“Full Credit” if meet above criteria

“Partial Credit (up to .9 points if increase from last year



\*The SEM (14-20 points) was added to the ELA and Math scores before averaging.

# Components of ESEA “Grade”: High Schools

Percent Tested: At Least 95%

Average Scale Score\* Performance

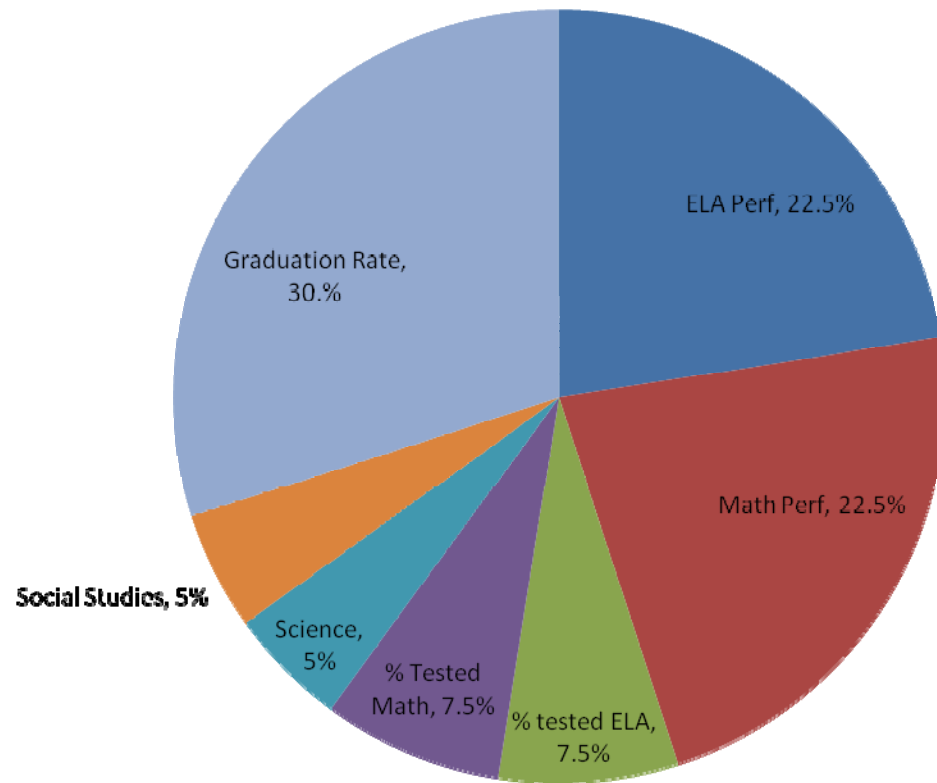
HSAP ELA: 223

HSAP Math: 220

EOCEP Biology: 76

EOCEP US History/Const: 71

Graduation Rate 73.1



“Full Credit” if meet above criteria

“Partial Credit” (up to .9 points if increase from last year)

# Demographic Subgroups

- All Students
- Male
- Female
- White
- African American
- Asian/ Pacific Is
- Hispanic
- American Indian
- Disabled
- LEP
- Subsidized Meals

Include if **30** or more students

Most Schools were measured in **7** subgroups

Others

6 subgroups: LMES, CHS

8 subgroups: DFMS

9 subgroups: IMS

10 subgroups: CRMS

# SCDE Web Page: ed.sc.gov/data/esea District Main Page

2012 - ESEA / Federal Accountability System

> DISTRICT **ESEA District Grade**

**Numerical Grade to Letter Grade Conversion Table** →

KEY	Index Score	Grade	Description
	90-100	A	Performance substantially exceeds the state's expectations.
	80-89.9	B	Performance exceeds the state's expectations.
	70-79.9	C	Performance meets the state's expectations.
	60-69.9	D	Performance does not meet the state's expectations.
	Less than 60	F	Performance is substantially below the state's expectations.

Overall Weighted Points Total **80**

Overall Grade Conversion **B** ← **ESEA District Letter Grade**

Points Total - Elementary Grades	83.8
Points Total - Middle Grades	78.3
Points Total - High School Grades	72

← **Points awarded from each type of school**

**ESEA Table of Elementary, Middle, and High School AMOs (i.e., target performance to receive a value of 1)** →

2012 Annual Measurable Objectives (AMO)			
	Elementary School	Middle School	High School
English Language Arts (ELA)	630	624	223
Math	630	624	220
Science / Biology	630	624	76
Social Studies / History	630	624	71
ELA - Percent Tested	95	95	95
Math - Percent Tested	95	95	95
Graduation Rate	N/A	N/A	73.1

**Matrix Key**

1 = Met State Objective  
 0 = Did not meet State Objective  
 0.1-0.9 = Level of Improvement between previous year and current year

↑ **Key Describing All Possible Values Received in a Matrix (appears on all pages)**

# SCDE Web Page: ed.sc.gov/data/esea

## Individual Matrix – Elementary School

ELEMENTARY SCHOOL MATRIX

Type of Matrix

Values (see Matrix Key and AMOs)

TITLE	ELA Proficiency Met/Improved	Math Proficiency Met/Improved	Science Proficiency Met/Improved	Social Studies Proficiency Met/Improved	ELA Percent Tested	Math Percent Tested
ALL STUDENTS	1	1	0.3	1	1	1
Male	1	1	0.3	1	1	1
Female	1	1	0.3	1	1	1
White	1	1	1	1	1	1
African-American	1	0	0.1	0.1	1	1
Asian / Pacific Islander	1	1	1	1	1	1
Hispanic	1	1	0	1	1	1
American Indian / Alaskan						
Disabled	0.3	0.2	0.9	0.6	1	1
LEP	1	1	0	1	1	1
Subsidized Meals	1	0	0.3	0.2	1	1

Demographic Categories

Key Describing All Possible Values Received in a Matrix (appears on all pages)

Total Number of Points	9.3	7.2	4.2	7.9	10	10
Total Number of Objectives	10	10	10	10	10	10
Percent of Objectives Met	93	72	42	79	100	100
Weight	0.35	0.35	0.05	0.05	0.1	0.1
Weighted Points Subtotal	32.55	25.2	2.1	3.95	10	10
Points Total	83.8					

Matrix Key

1 = Met State Objective

0 = Did not meet State Objective

0.1-0.9 = Level of Improvement between previous year and current year

School or School-Type Total ESEA Points

Values Used to Compute Scores

# SCDE Web Page: ed.sc.gov/data/esea

## Individual Matrix – Middle School

MIDDLE SCHOOL MATRIX  
↑  
Type of Matrix

Values (see Matrix Key and AMOs)

TITLE	ELA Proficiency Met/Improved	Math Proficiency Met/Improved	Science Proficiency Met/Improved	Social Studies Proficiency Met/Improved	ELA Percent Tested	Math Percent Tested
ALL STUDENTS	1	1	1	1	1	1
Male	1	1	1	1	1	1
Female	1	1	1	1	1	1
White	1	1	1	1	1	1
African-American	0	0	0.8	0.3	1	1
Asian / Pacific Islander	1	1	1	1	1	1
Hispanic	1	1	1	1	1	1
American Indian / Alaskan						
Disabled	0.2	0.1	0	0.2	1	1
LEP	1	1	1	1	1	1
Subsidized Meals	0	0	0.7	0.4	1	1

Demographic Categories

Key Describing All Possible Values Received in a Matrix (appears on all pages)

Total Number of Points	7.2	7.1	8.5	7.9	10	10
Total Number of Objectives	10	10	10	10	10	10
Percent of Objectives Met	72	71	85	79	100	100
Weight	0.35	0.35	0.05	0.05	0.1	0.1
Weighted Points Subtotal	25.2	24.85	4.25	3.95	10	10
Points Total	78.3					

Matrix Key

1 = Met State Objective

0 = Did not meet State Objective

0.1-0.9 = Level of Improvement between previous year and current year

School or School-Type Total ESEA Points

Values Used to Compute Scores

# SCDE Web Page: ed.sc.gov/data/esea

## Individual Matrix – High School

HIGH SCHOOL MATRIX

Type of Matrix

Demographic Categories

Values (see Matrix Key and AMOs)

TITLE	ELA Proficiency Met/Improved	Math Proficiency Met/Improved	Science Proficiency Met/Improved	Social Studies Proficiency Met/Improved	ELA Percent Tested AMO=95	Math Percent Tested AMO=95	Graduation Rate
ALL STUDENTS	1	1	1	1	1	1	0.6
Male	1	1	1	1	1	1	0.9
Female	1	1	1	1	1	1	0
White	1	1	1	1	1	1	1
African-American	1	0	0.9	0.1	1	1	0.6
Asian / Pacific Islander							1
Hispanic							0.2
American Indian / Alaskan							
Disabled	0	0			0	0	0.2
LEP							0
Subsidized Meals	1	1	1	0.2	1	1	0.6

Total Number of Points	6	5	5.9	4.3	6	6	5.1
Total Number of Objectives	7	7	6	6	7	7	10
Percent of Objectives Met	85.7	71.4	98.4	71.6	85.8	85.8	51
Weight	0.225	0.225	0.05	0.05	0.075	0.075	0.3
Weighted Points Subtotal	19.3	16.1	4.9	3.6	6.4	6.4	15.3
Points Total	72						

Note Describing the Use of SC-Alt Data (appears on all pages)

Note:

SC-ALT scores were included in the calculations where appropriate.

\* - 4 = Insufficient sample size (fewer than 30 students)

\* - 6 = There is no available test data for this school

School or School-Type Total ESEA Points

Values Used to Compute Scores

# The Annual Measurable Objective (AMO) will increase each year

	ELA				Math		
	Elementary	Middle	High		Elementary	Middle	High
2011-12	630	624	223		630	624	220
2012-13	635	628	226		635	628	223
2013-14	640	632	229		640	632	226
2014-15	645	636	232		645	636	230

	Science				Social Studies		
	Elementary	Middle	High		Elementary	Middle	High
2011-12	630	624	76		630	624	71
2012-13	635	628	77		635	628	73
2013-14	640	632	78		640	632	75
2014-15	645	636	79		645	636	77