

S&W

ARCHITECTURE
ENGINEERING
INTERIORS

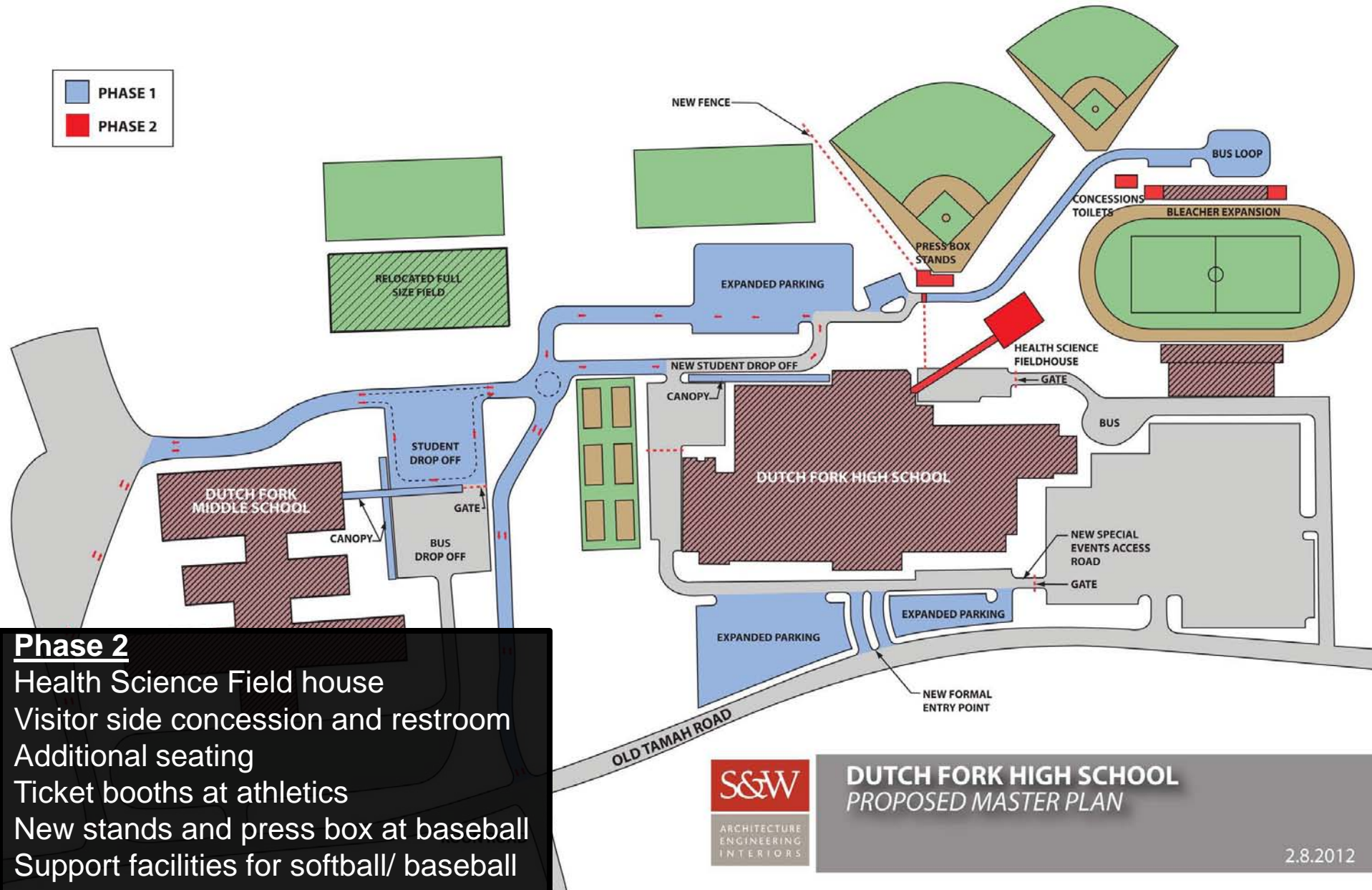
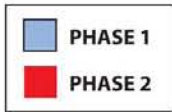
SMART DESIGN SOLUTIONS

DUTCH FORK HIGH SCHOOL

MASTER PLAN

PHASE 2





Phase 2
 Health Science Field house
 Visitor side concession and restroom
 Additional seating
 Ticket booths at athletics
 New stands and press box at baseball
 Support facilities for softball/ baseball



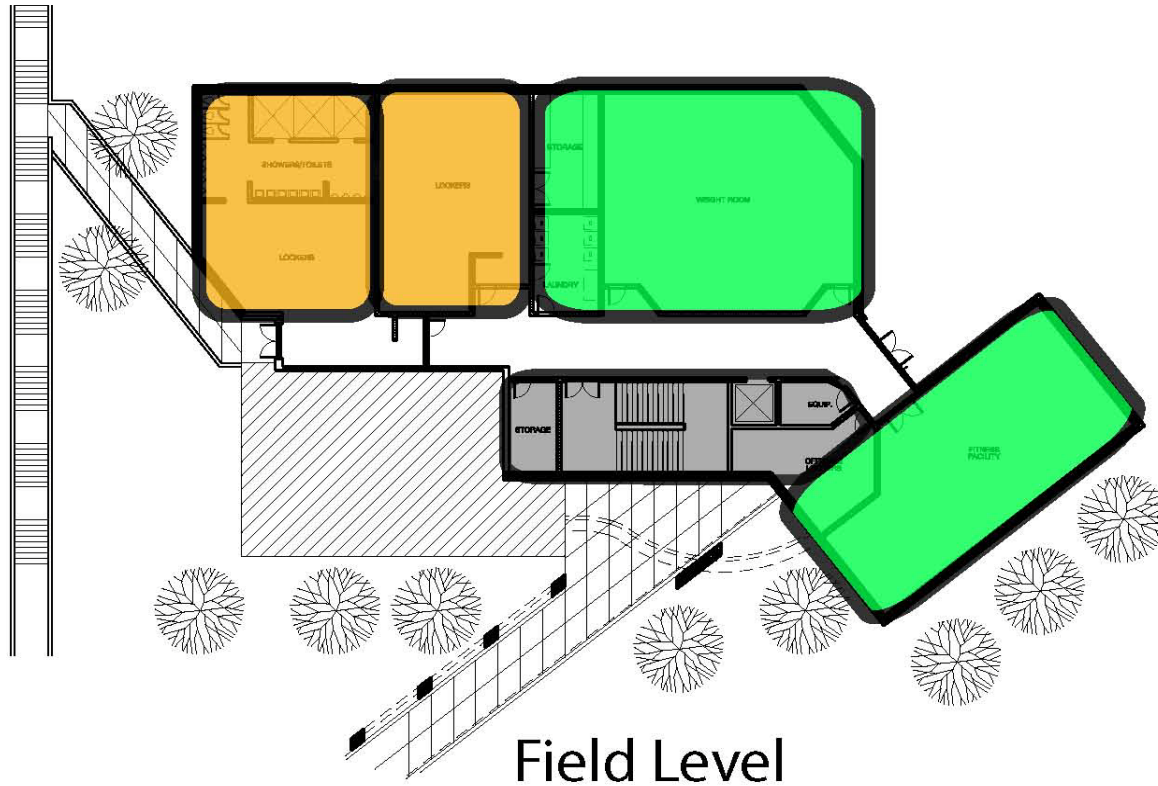
DUTCH FORK HIGH SCHOOL
 PROPOSED MASTER PLAN

2.8.2012

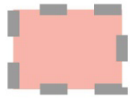


- CLASSROOM
- SPORTS MEDICINE
- LOCKER ROOMS
- ATHLETICS/LOCKER ROOM
- CANTEEN
- SUPPORT

Main Level



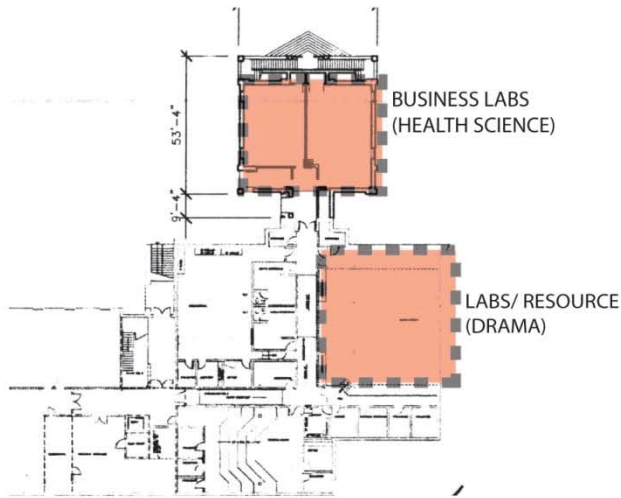
- CLASSROOM
- SPORTS MEDICINE
- LOCKER ROOMS
- ATHLETICS/LOCKER ROOM
- CANTEEN
- SUPPORT



RE-PROGRAMMED SPACE

LABS
(DRAMA)

PROPOSED USE
(EXISTING USE)



Lower Level

DIGITAL ELECTRONICS
(BUSINESS)

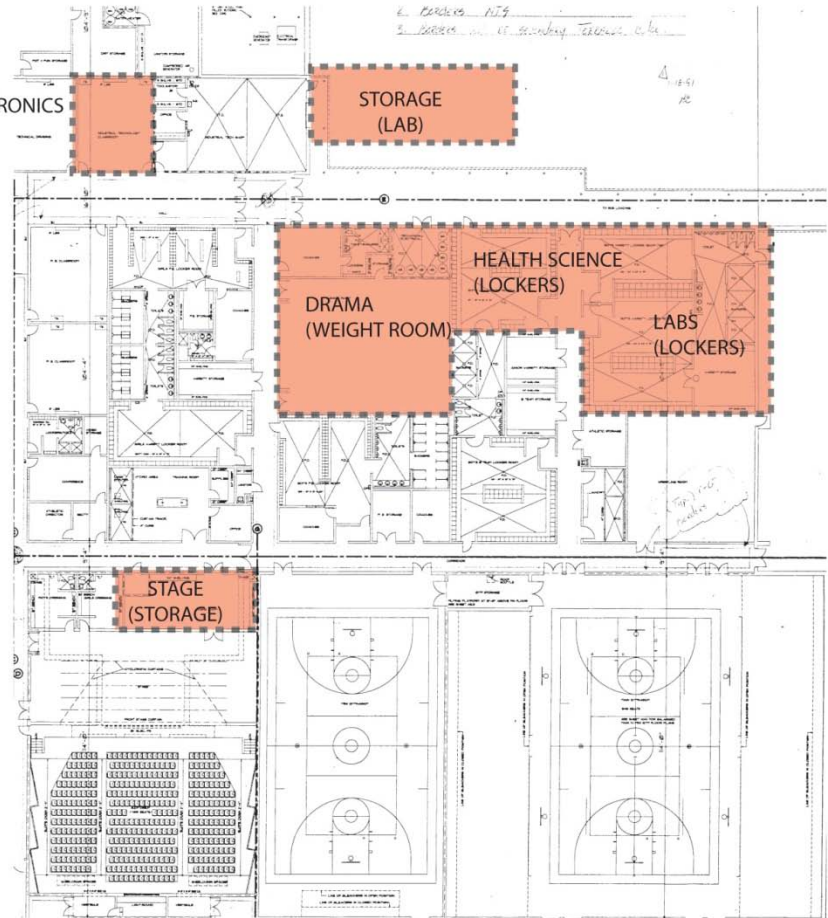
STORAGE
(LAB)

DRAMA
(WEIGHT ROOM)

HEALTH SCIENCE
(LOCKERS)

LABS
(LOCKERS)

STAGE
(STORAGE)



Main Level

FUTURE INTERIOR RENOVATIONS



S&W



ARCHITECTURE
ENGINEERING
INTERIORS

SMART DESIGN SOLUTIONS

IRMO HIGH SCHOOL

MASTER PLAN

PHASE 1





Entry

Entry

Entry

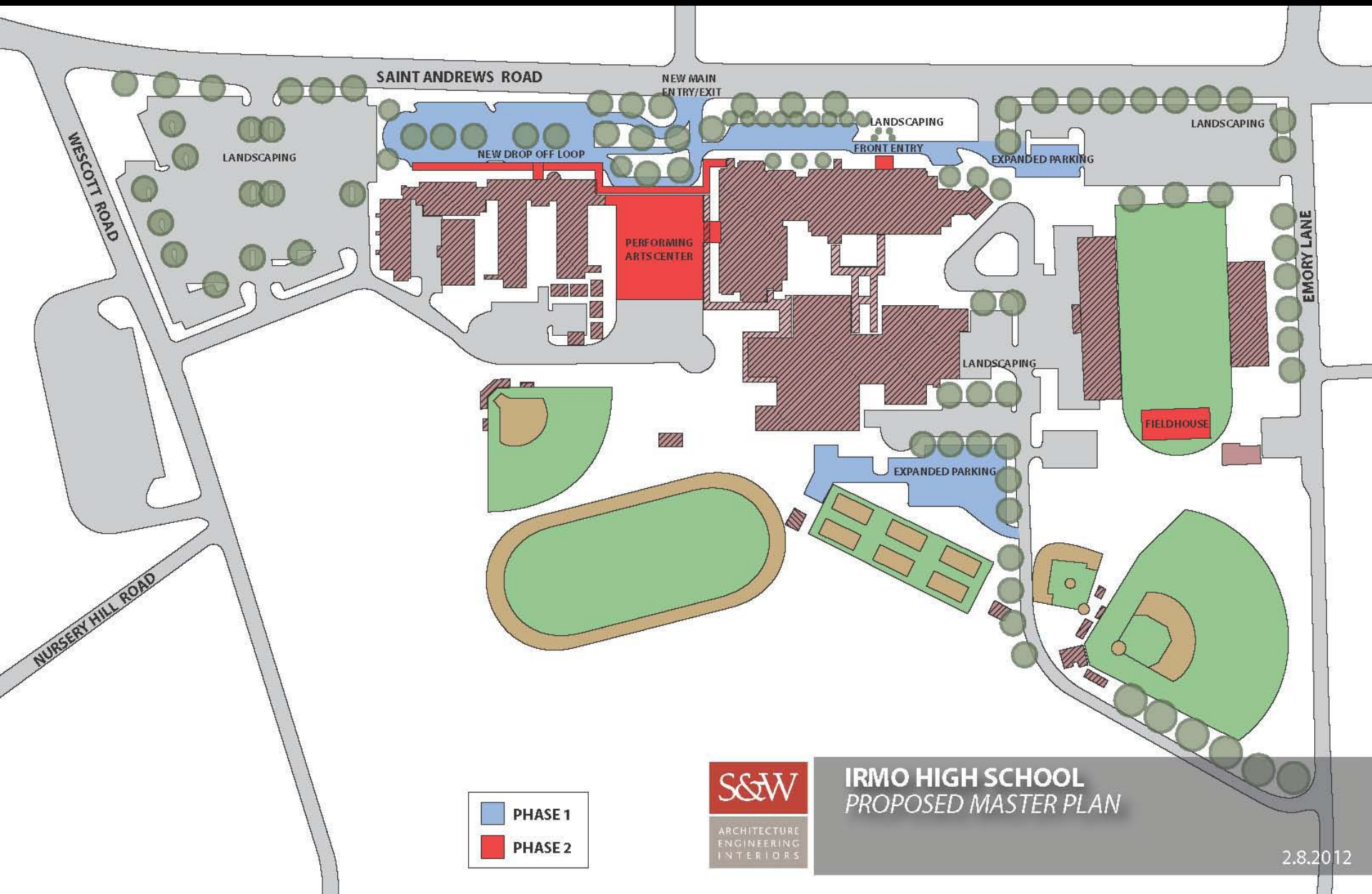
Student Parking

Student Drop off/
Staff parking

Bus

Phase 1
Site circulation
Redefine entry points
New student drop off
Parking
Landscaping
Budget- \$1,450,000

EXISTING CONDITIONS



- PHASE 1
- PHASE 2



IRMO HIGH SCHOOL
PROPOSED MASTER PLAN

2.8.2012

DUTCH FORK HIGH SCHOOL

MASTER PLAN

PHASE 1



Phase 1

- Redefine entry points
- Site circulation
- New student drop off
- Canopies
- Traffic
- Handicap Access
- Parking
- Budget: \$3,350,000



EXISTING CONDITIONS

■ PHASE 1
■ PHASE 2



DUTCH FORK HIGH SCHOOL
 PROPOSED MASTER PLAN

2.8.2012

S&W

ARCHITECTURE
ENGINEERING
INTERIORS

SMART DESIGN SOLUTIONS