

Report on Student Dropout Rates



Presented to the School Board
January 9, 2012

Dropout Definition



The State Board of Education defines dropout as a student who leaves school for any reason, other than death, prior to graduation or completion of a course of studies and without transferring to another school or institution.



Graduation Rate: the percentage of students receiving a state diploma within four years of entering high school.

2010-11 Dropout Information



66 Students



Decreasing trend continues



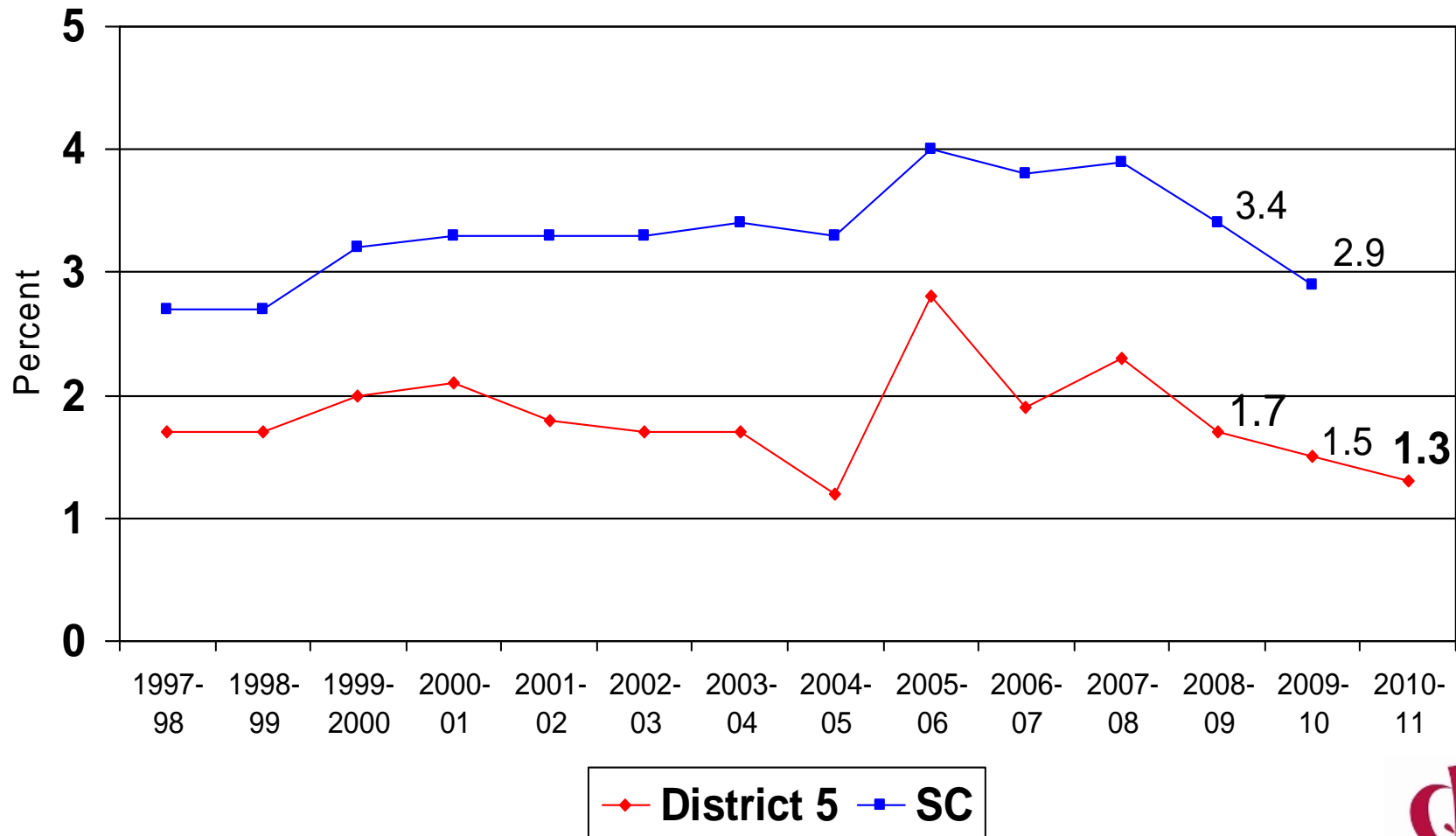
Dropout Reasons

- Status Unknown: 68%
- Poor attendance: 18%
- Transfer to Adult Ed: 11%
- Expelled / Did not return: 3%

2010-11 results for other districts and the state will be made available later this year.

Dropout Rate

14-Year Trend



Dropout Rates for Midland's School Districts

	2006-07	2007-08	2008-09	2009-10
Lexington 1	0.6	2.0	1.3	1.6
Lexington 2	1.6	4.0	3.8	0.9
Lexington 3	4.2	4.8	5.1	6.4
Lexington 4	9.2	8.2	4.4	4.8
Lexington 5	1.9	2.3	1.7	1.5
Newberry	4.5	4.6	2.2	2.0
Richland 1	4.5	4.9	5.0	3.5
Richland 2	2.0	2.9	2.8	2.5
South Carolina	3.8	3.9	3.4	2.9