



Minutes/September 26, 2011

The Board of Trustees of School District Five of Lexington and Richland Counties met at Dutch Fork Middle School with the following members present:

Mr. Robert Gantt, Chairman  
Mrs. Beth Hutchison-Watson, Vice Chairman  
Mrs. Jan Hammond  
Mrs. Kim Murphy  
Mr. Jim Turner  
Dr. Stephen Hefner, District Superintendent

The following staff were in attendance:

Ms. Helen Anderson, Chief Instructional Services Officer  
Dr. Angela Bain, Chief Human Resource Services Officer  
Mr. Gary Black, Chief Technology Officer  
Dr. Karl Fulmer, Chief Financial Services Officer  
Mr. Michael Harris, Director of Student Services  
Mr. Keith McAlister, Director of New Design and Construction  
Mr. Buddy Price, Director of Office of Community Services

Chairman Robert Gantt called the meeting to order and gave welcoming remarks.

The Invocation was given by Tagg Wolverton, student minister, Gateway Baptist Church. The Pledge of Allegiance was led by Rod Taylor, principal at Dutch Fork High School.

The School Board Spotlight was led by Robert Gantt, Beth Watson and Jan Hammond. A Resolution was presented to Kathy Gray on behalf of her son, Adam Gray

During the superintendent's report, Dr. Hefner gave an update on his Vision 2015; Dr. Fulmer presented standard monthly general fund financial reports for August 2011 (Exhibit B), a report of FY 2011-2012 approved budget, and a report on bonds by Frannie Heizer and Mike Gallagher; Missy Wall-Mitchell presented a standardized test score presentation (Exhibit C); and Keith McAlister presented an update on bond referendum expenditures by project through 8/31/11 (Exhibit D), an 8% capital budget projects report (Exhibit E), and a monthly update (Exhibit F).

During the public participation, Julie Murray spoke regarding the Vision 2015 and resolution at the previous board meeting; Amanda Murray spoke regarding portables at Chapin Elementary School; Jenny Bowers, Melissa Heria, Michelle Jowers, Paulette Rayfield, and Dana Bennett spoke regarding the pre-school program at Chapin Elementary School; Toshia Addison spoke regarding the district.

A = Absent  
AB = Abstain  
N = No  
X = Yes  
R = Recuse

SCHOOL DISTRICT FIVE  
OF  
LEXINGTON AND RICHLAND COUNTIES

Meeting of September 26, 2011

		B A U M G A R D N E R	G A N T T	H A M M O N D	M U R P H Y	T U R N E R	W A T S O N	W H I T E
1.	M. Watson                      S. Turner  Enter executive session to consider the following: a) selected employment items (Exhibit A)  M. Murphy                      S. Hammond  Amend to add an update on the bomb threat  Vote on original motion							
		A	No	X	X	X	No	A
		A	X	X	X	X	X	A
2.	M. Watson                      S. Turner  Approve the agenda	A	X	X	X	X	X	A
3.	M. Watson                      S. Hammond  Approve the proposed ICRC 2011-2012 Park School Agreement (Exhibit G) with the added clause "does not include Saluda Shoals Park"	A	X	X	X	X	X	A
4.	M. Hammond                      S. Watson  Approve the selected employment items (Exhibit A)	A	X	X	X	X	X	A
5.	M. Watson                      S. Hammond  Approve second reading of proposed revisions and additions to J policies (Exhibit H) JLA "Student Insurance Coverage" replaces JGA "Student Insurance Program, JLCC "Communicable/Infectious Diseases" replaces JGCC "Communicable Diseases", JLCC-R "Communicable/Infectious Diseases" replaces JGCC "Communicable Diseases - Students", JLCDA "Individual Healthcare Plans" replaces JGCDA "Individual Healthcare Plans", Add JLCDA-E "Indemnification/Hold Harmless Agreement For Self-Administration of Medication", JLCE "First Aid And Emergency Care" replaces JGFGA "First Aid & Emergency Care", JLCFA "Training Of Unlicensed Personnel For Select Nursing Tasks" replaces JDCDAA	A	X	X	X	X	X	A

A = Absent  
AB = Abstain  
N = No  
X = Yes  
R = Recuse

SCHOOL DISTRICT FIVE  
OF  
LEXINGTON AND RICHLAND COUNTIES

Meeting of September 26, 2011

		B A U M G A R D N E R	G A N T T	H A M M O N D	M U R P H Y	T U R N E R	W A T S O N	W H I T E
"Training Of Unlicensed Personnel For Select Nursing Tasks"								
6.	M. Watson                      S. Hammond  Second reading approval of proposed Administrative Rule for policy IB "Academic Freedom" (Exhibit I)	A	X	X	No	X	X	A
7.	M. Hammond                      S. Watson  Second reading approval of proposed revisions to board policy ADF "School Wellness" (Exhibit J)	A	X	X	No	X	X	A
8.	M. Watson                      S. Hammond  Approve the minutes of the September 12, 2011 board meeting	A	X	X	X	X	X	A
9.	M. Watson                      S. Turner  Adjourn at 10:00 p.m.	A	X	X	X	X	X	A

A = Absent  
AB = Abstain  
N = No  
X = Yes  
R = Recuse



Sybil Stowers <sstowers@lexrich5.org>

## Chapin High on the record Page 1 of 5... cover sheet

1 message

Kim Murphy <movingmountainskwm@gmail.com>

Wed, Sep 28, 2011 at 6:04 PM

To: Sybil Stowers <sstowers@lex5.k12.sc.us>

Cc: Kim Murphy <movingmountainskwm@gmail.com>

Sybil - Please place this as page 1 and jpgs to follow behind. Thanks!

PS Please let me know that you rec'd.

--

Kim Murphy 446-6565  
154 Old Laurel Lane  
Chapin, SC 29036



CHAPIN Renovation Plans - Cover Sheet.docx

15K

Chairman's note: Ref: School Board Meeting 9/26/11 - Approved Adding Items as referenced by Kim Murphy as "my Chapin High School Plans and statement" as her personal opinion and not the opinion of the other six members of the Board. The Board voted to allow the material and statement with the stipulation that the following 4 disclaimers be attached:

1. That the Statements submitted by Kim Murphy are NOT factual.
2. That the Statements submitted by Kim Murphy represent HER opinion only.
3. That the Statements submitted by Kim Murphy representing the opinion and statements by the Principal at Chapin High School are Incorrect and are HER opinion only.
4. That the Statements submitted by Kim Murphy representing that approved plans for Chapin High School are for 1300 Students Not 1700 students by the State Department of Education OSF are Incorrect and HER opinion only.

Attachment 1 is included with  
the minutes of the 9-26-11  
meeting, at the request of Board member  
Kim Murphy  
pursuant to S.C. Code Ann. §30-4-90(a)(4)  
and Board Policy BEDG. The Board majority  
did not approve, disapprove, or otherwise  
act upon the contents of this attachment.

## CHAPIN HIGH SCHOOL

### Approved Renovation Plans

#### Building capacity reduced from 1,700 students to 1,300 students

(Teacher assignment based on actual staff serving the school's 1,300-student enrollment for 2010-2011.)

Contact Kim Murphy at [movingmountainskwm@gmail.com](mailto:movingmountainskwm@gmail.com) for more information or enlarged plans.

Lexington-Richland District 5 has reduced the proposed capacity of Chapin High School. The attached renovation plans, as approved by the Dept. of Education and that are currently being advertised for bid, will only accommodate 1,300 students instead of the 1,700 student-capacity advertised in the 2008 Bond Referendum.

The plans show that, upon completion of the facility, when all teachers are relocated out of the portable classrooms and placed into permanent classrooms inside the renovated school, there will only be one vacant classroom. How will one additional classroom over and above what is required to serve its current student enrollment of 1,300 students educate 400 more students in the core subjects of English, Math, Social Studies, Foreign Language and District 5's standard electives?

Parents, community members, District 5 staff, and voters should be informed of the significant reduction in capacity and the impact it will have on whether or not a new high school should be built in the Chapin attendance area and all should have the opportunity for input.

#### Information:

- The drawings are actual plans from Lexington-Richland District 5.
- In 2008, the voters approved expanding Chapin High School to 1,700 students – 400 more students than the current enrollment of approximately 1,300 students.
- Teacher placement is for illustrative purposes only. No actual teacher assignment has been approved. However, teachers have been logically placed on the plan – Art teacher in an Art room, Science teacher in a Science room, etc.
- Original plans advertised in the referendum showed a new three-story academic wing. Following the Nov. 2008 referendum vote, the third floor was removed from the drawings, the number of classrooms and Science Labs were reduced, and the auditorium and dance study dropped from the Master Plan. A 10,000 sq ft. field house was added.
- The bar (orange) placed on rooms indicate a space that is shared by more than one teacher, i.e. a computer or Science lab.
- The plans will only add on 24 classroom-type teaching stations. However, there are currently 22 portable units housing 22 classroom-type teaching stations. (An additional portable is used for Art, which will be relocated to an Art room.)
- Science Labs have been reduced to less than the number currently available at the school.
- The Principal desires more programs at the school. The only way additional programs can be added is to place them in classrooms needed for core subjects – English, Math, Social Studies, etc and further reduce capacity.
- McKibben Demographics projects that the current Chapin High School attendance area will only increase to 1,550 students in the next 10 years. (This is prior to any attendance line adjustments/rezonings from the new high school proposed to be constructed in the rural northeast side of the Chapin attendance area.)
- The principal has stated that the school is currently under-staffed. However, plans only allow for one more teacher – there is only one extra classroom. (The plan shows two extra classrooms, however, after one JRROTC room is converted to storage because a large storage room will be lost in the renovation, there will only be one additional classroom.)
- The only way the renovated school will hold more students is to increase student/teacher ratio or add portables.

*Presented at the September 26, 2011 School Board Meeting for the Record.*

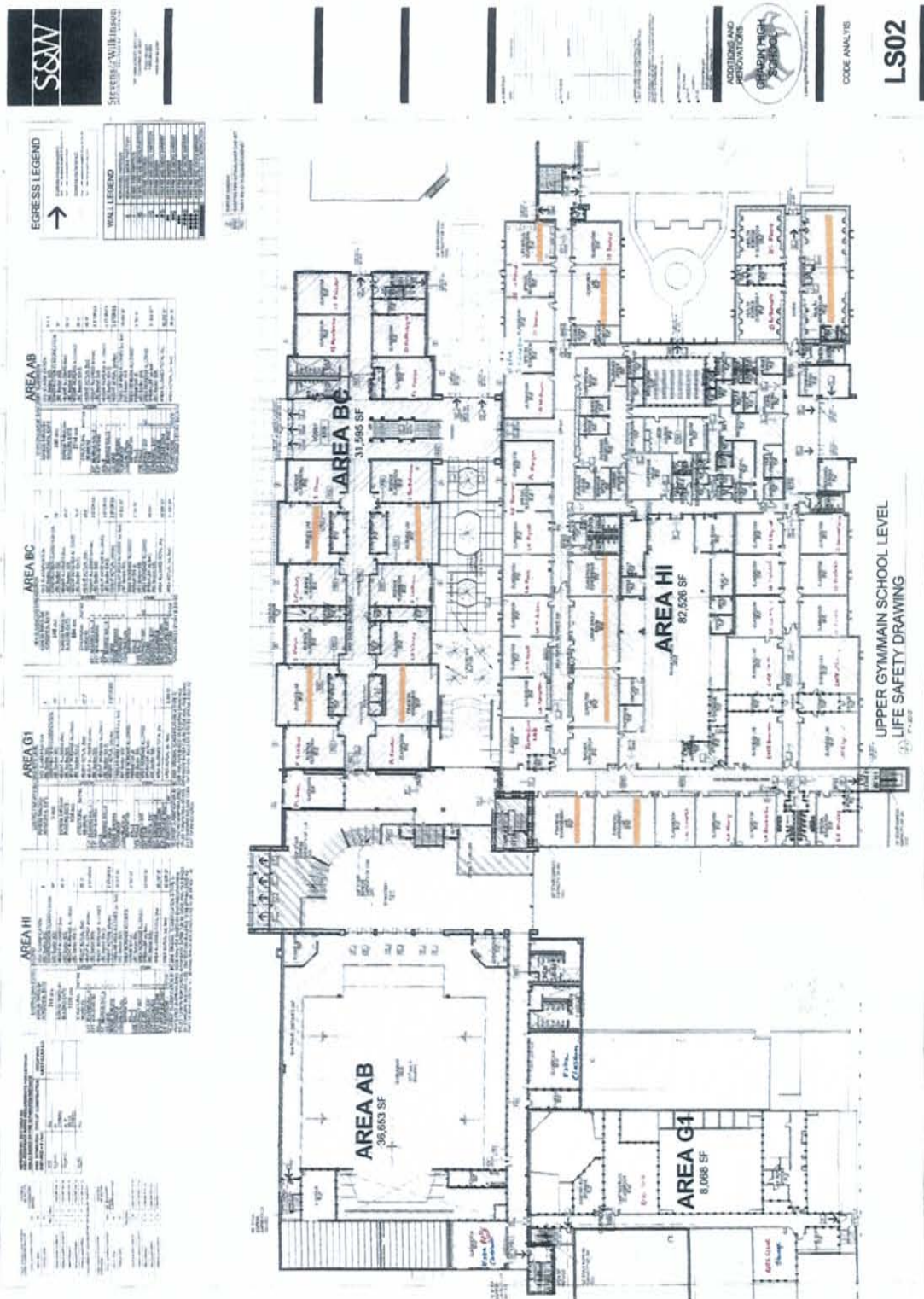
Chairman's note: Ref: School Board Meeting 9/26/11 - Approved Adding Items as referenced by Kim Murphy as "my Chapin High School Plans and statement" as her personal opinion and not the opinion of the other six members of the Board. The Board voted to allow the material and statement with the stipulation that the following 4 disclaimers be attached:

1. That the Statements submitted by Kim Murphy are NOT factual.
2. That the Statements submitted by Kim Murphy represent HER opinion only.
3. That the Statements submitted by Kim Murphy representing the opinion and statements by the Principal at Chapin High School are Incorrect and are HER opinion only.
4. That the Statements submitted by Kim Murphy representing that approved plans for Chapin High School are for 1300 Students Not 1700 students by the State Department of Education OSF are Incorrect and HER opinion only.

Attachment 2 is included with the minutes of the 9-26-11 meeting, at the request of Board member Kim Murphy pursuant to S.C. Code Ann. §30-4-90(a)(4) and Board Policy BEDG. The Board majority did not approve, disapprove, or otherwise act upon the contents of this attachment.

Chairman's note: Ref: School Board Meeting 9/26/11 - Approved Adding Items as referenced by Kim Murphy as "my Chapin High School Plans and statement" as her personal opinion and not the opinion of the other six members of the Board. The Board voted to allow the material and statement with the stipulation that the following 4 disclaimers be attached:

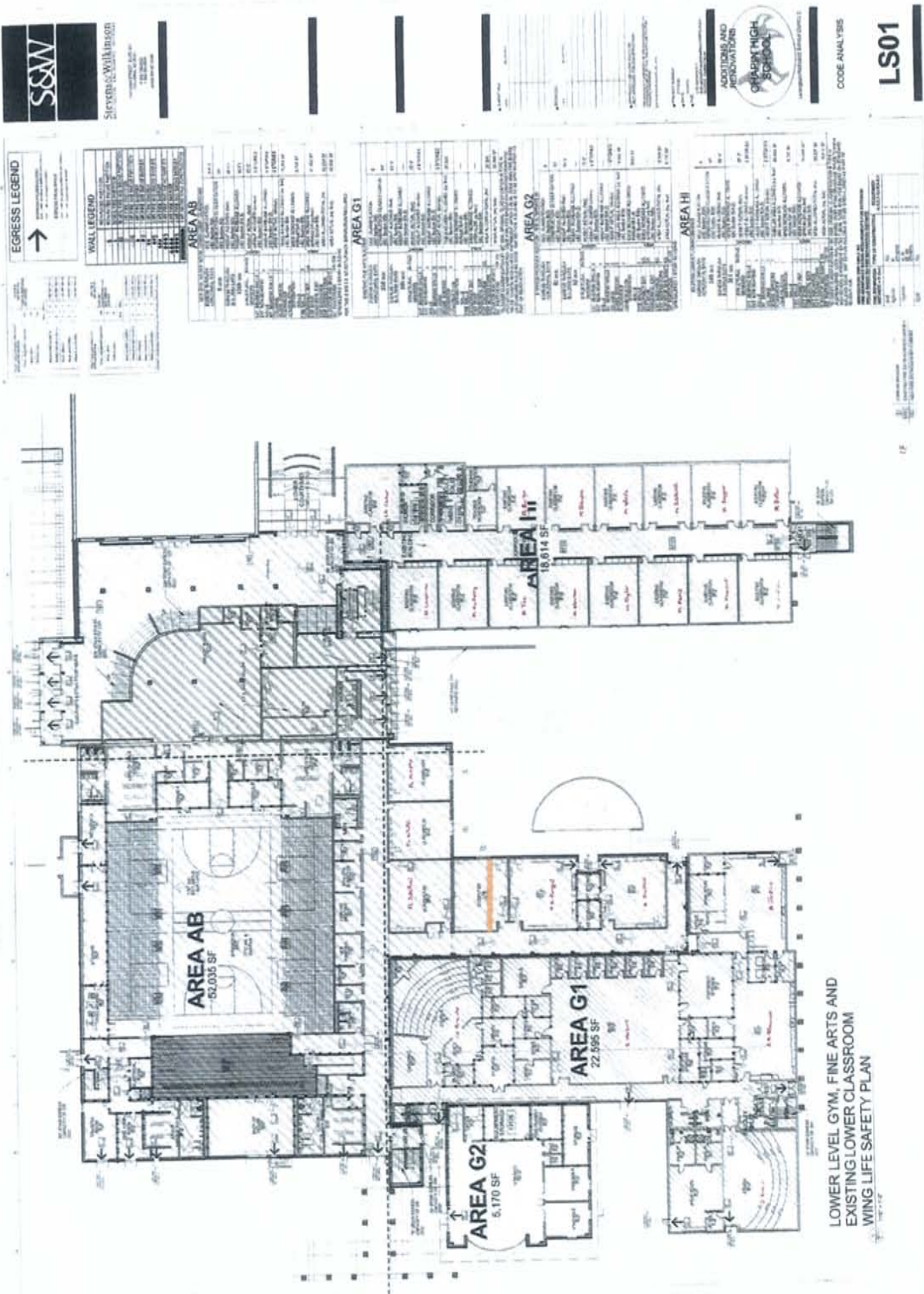
1. That the Statements submitted by Kim Murphy are NOT factual.
2. That the Statements submitted by Kim Murphy represent HER opinion only.
3. That the Statements submitted by Kim Murphy representing the opinion and statements by the Principal at Chapin High School are Incorrect and are HER opinion only.
4. That the Statements submitted by Kim Murphy representing that approved plans for Chapin High School are for 1300 Students Not 1700 students by the State Department of Education OSF are Incorrect and HER opinion only.



Attachment 3 is included with the minutes of the 9-26-11 meeting, at the request of Board member Kim Murphy pursuant to S.C. Code Ann. §30-4-90(a)(4) and Board Policy BEDG. The Board majority did not approve, disapprove, or otherwise act upon the contents of this attachment.

Chairman's note: Ref: School Board Meeting 9/26/11 - Approved Adding Items as referenced by Kim Murphy as "my Chapin High School Plans and statement" as her personal opinion and not the opinion of the other six members of the Board. The Board voted to allow the material and statement with the stipulation that the following 4 disclaimers be attached:

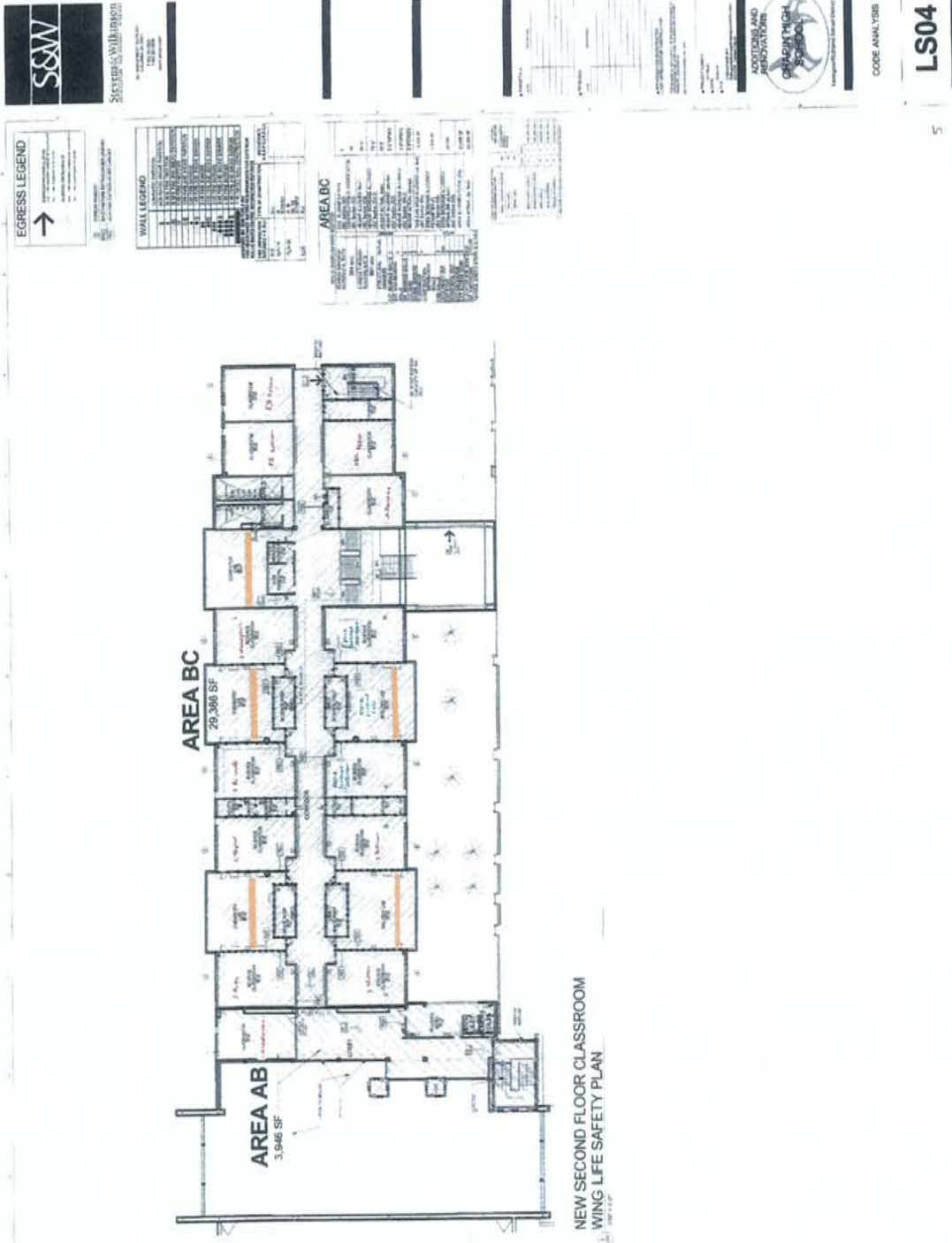
1. That the Statements submitted by Kim Murphy are NOT factual.
2. That the Statements submitted by Kim Murphy represent HER opinion only.
3. That the Statements submitted by Kim Murphy representing the opinion and statements by the Principal at Chapin High School are Incorrect and are HER opinion only.
4. That the Statements submitted by Kim Murphy representing that approved plans for Chapin High School are for 1300 Students Not 1700 students by the State Department of Education OSF are Incorrect and HER opinion only.



Attachment 4 is included with the minutes of the 9-26-11 meeting, at the request of Board member Kim Murphy pursuant to S. C. Code Ann. § 30-4-90(a)(4) and Board Policy BEDG. The Board majority did not approve, disapprove, or otherwise act upon the contents of this attachment.

Chairman's note: Ref: School Board Meeting 9/26/11 - Approved Adding Items as referenced by Kim Murphy as "my Chapin High School Plans and statement" as her personal opinion and not the opinion of the other six members of the Board. The Board voted to allow the material and statement with the stipulation that the following 4 disclaimers be attached:

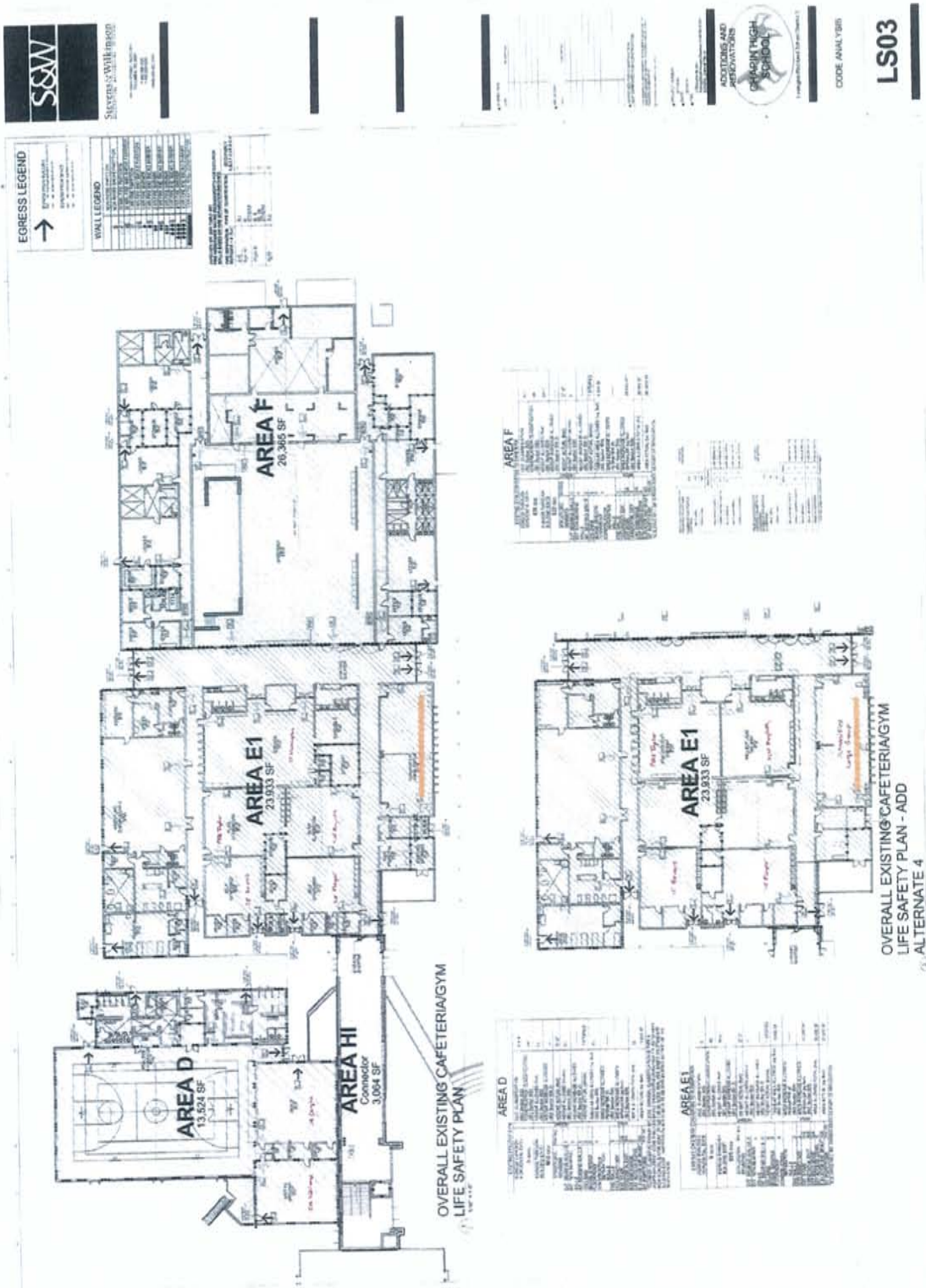
1. That the Statements submitted by Kim Murphy are NOT factual.
2. That the Statements submitted by Kim Murphy represent HER opinion only.
3. That the Statements submitted by Kim Murphy representing the opinion and statements by the Principal at Chapin High School are Incorrect and are HER opinion only.
4. That the Statements submitted by Kim Murphy representing that approved plans for Chapin High School are for 1300 Students Not 1700 students by the State Department of Education OSF are Incorrect and HER opinion only.



Attachment 5 is included with the minutes of the 9-26-11 meeting, at the request of Board member Kim Murphy pursuant to S.C. Code Ann. § 30-4-90(a)(4) and Board Policy BEDG. The Board majority did not approve, disapprove, or otherwise act upon the contents of this attachment.

Chairman's note: Ref: School Board Meeting 9/26/11 - Approved Adding Items as referenced by Kim Murphy as "my Chapin High School Plans and statement" as her personal opinion and not the opinion of the other six members of the Board. The Board voted to allow the material and statement with the stipulation that the following 4 disclaimers be attached:

1. That the Statements submitted by Kim Murphy are NOT factual.
2. That the Statements submitted by Kim Murphy represent HER opinion only.
3. That the Statements submitted by Kim Murphy representing the opinion and statements by the Principal at Chapin High School are Incorrect and are HER opinion only.
4. That the Statements submitted by Kim Murphy representing that approved plans for Chapin High School are for 1300 Students Not 1700 students by the State Department of Education OSF are Incorrect and HER opinion only.



Attachment 6 is included with the minutes of the 9-26-11 meeting, at the request of Board member Kim Murphy pursuant to S.C. Code Ann. §30-4-90(a)(4) and Board Policy BEDG. The Board majority did not approve, disapprove, or otherwise act upon the contents of this attachment.