



**School District 5 of  
Lexington/Richland Counties**



presented by  
Larry Wilund, AIA : Jimmy Beckham, AIA

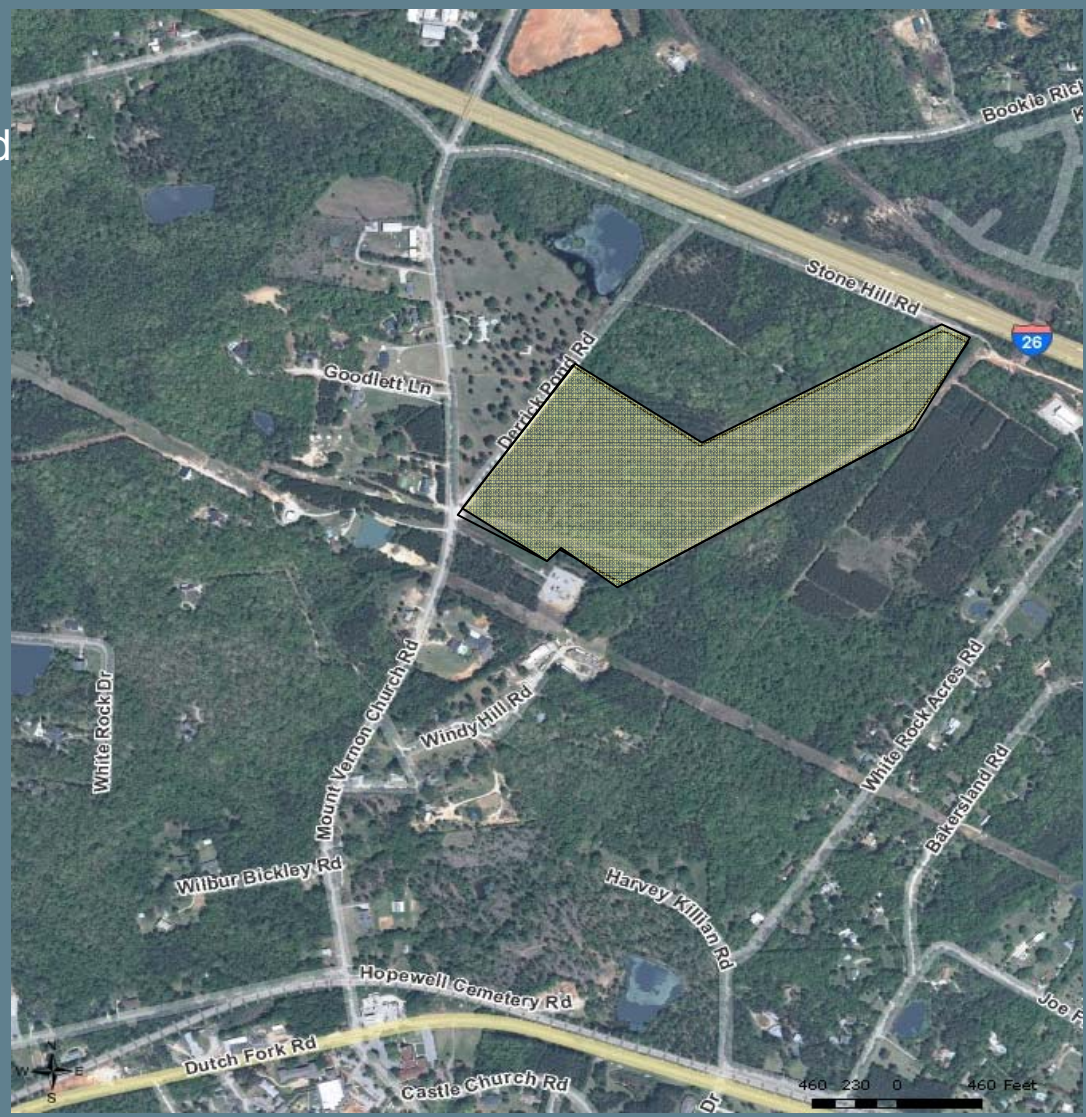
## **New Elementary School**

### **Chapin Elementary School Kitchen Renovations**

### **Chapin Elementary School Admin / HVAC Renovations**

December 13, 2010

Intersection of Mount Vernon Church Road and Derrick Pond Road





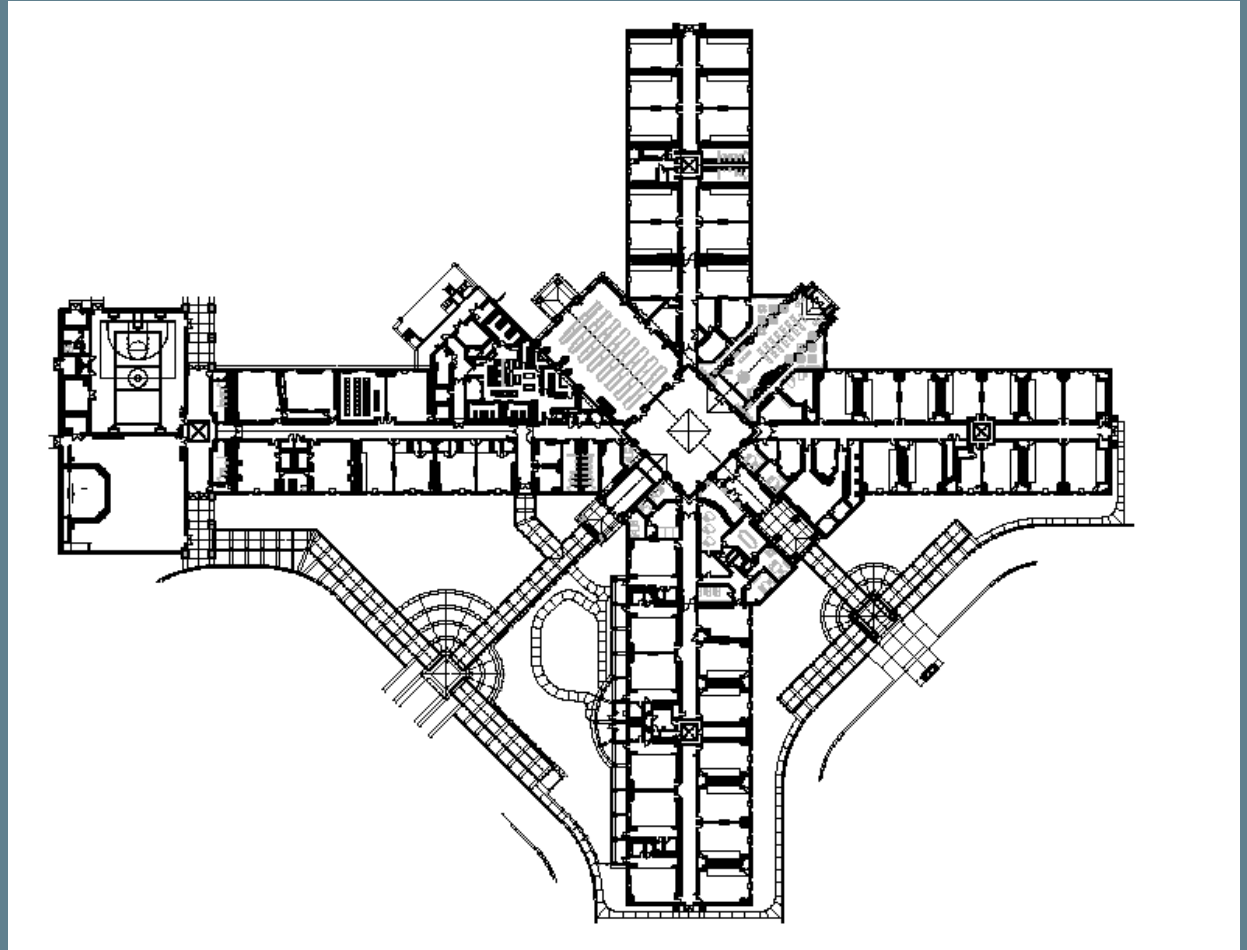
Site Adapt of Oak Pointe

Designed for 750 – Core of 900

36 Classrooms – K-5

Media Center, Cafeteria,  
Multipurpose Room, PE Room

110,700 sf



New Kitchen Equipment

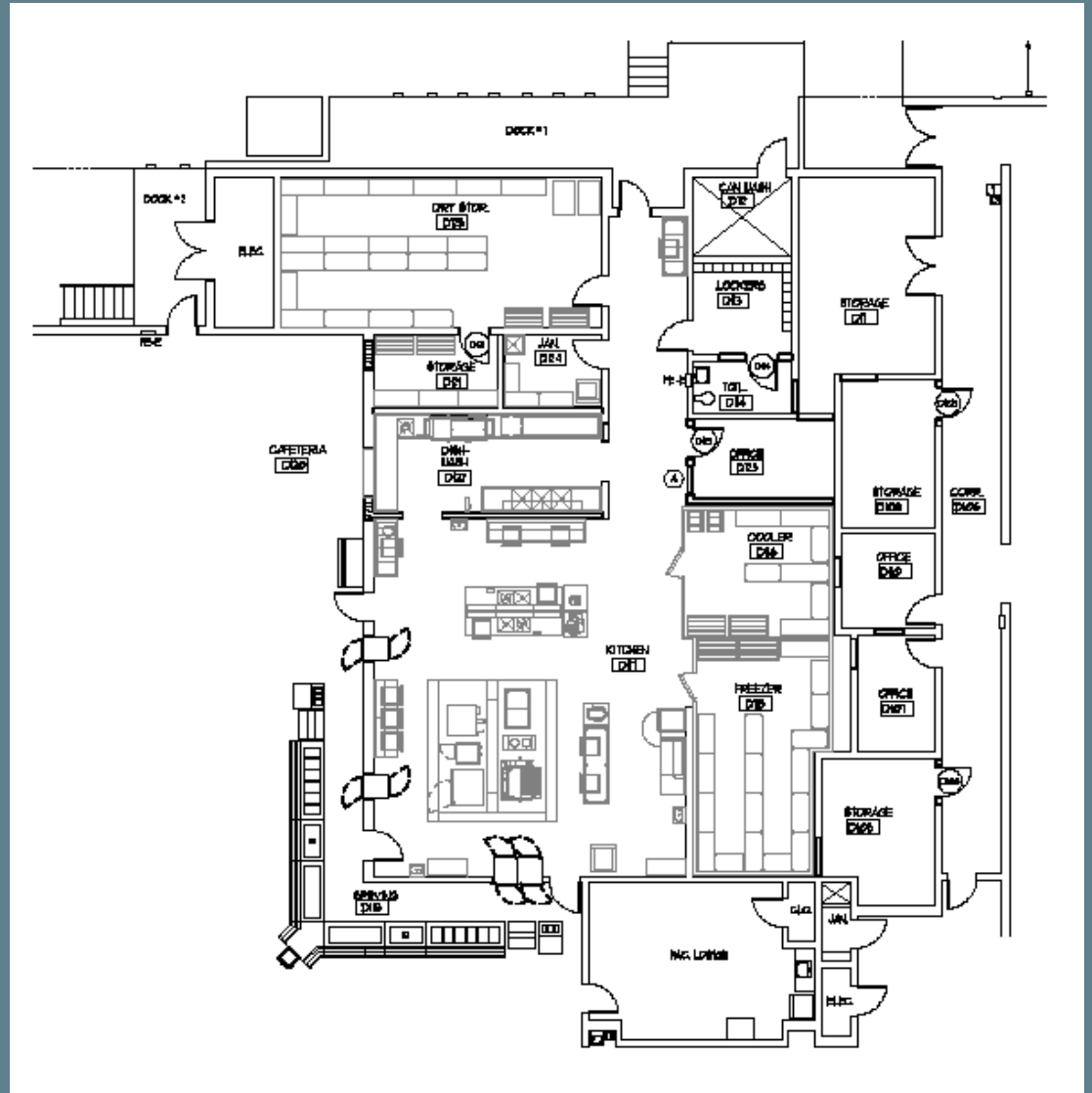
New Walk-in Cooler and Freezer

New HVAC

Revised Layout

Upgraded Finishes

New Office Layout



New HVAC Units – Entire School

Admin area layout revisions –  
Reception Area, Media Center  
Work Area

Updated Finishes

New Reception Counters and  
Casework

Enlarged Conference Room with  
Kitchenette

New lighting

