

NEW HIGH SCHOOL

DQ G

C A T E C E N T E R

6th Viewing

2nd Construction Documents Viewing

09.27.10



mcmillan|pazdan|smith
architecture

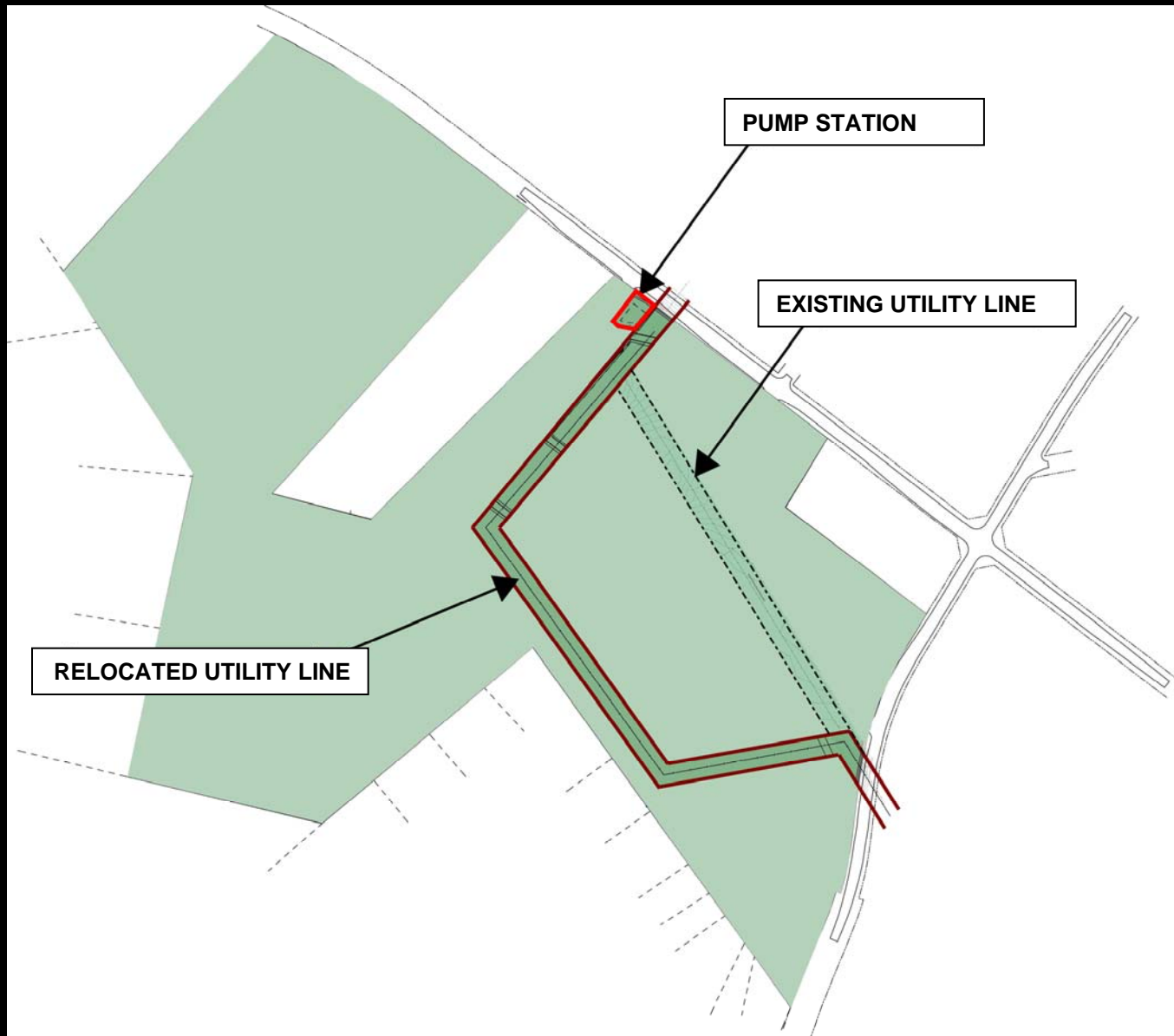




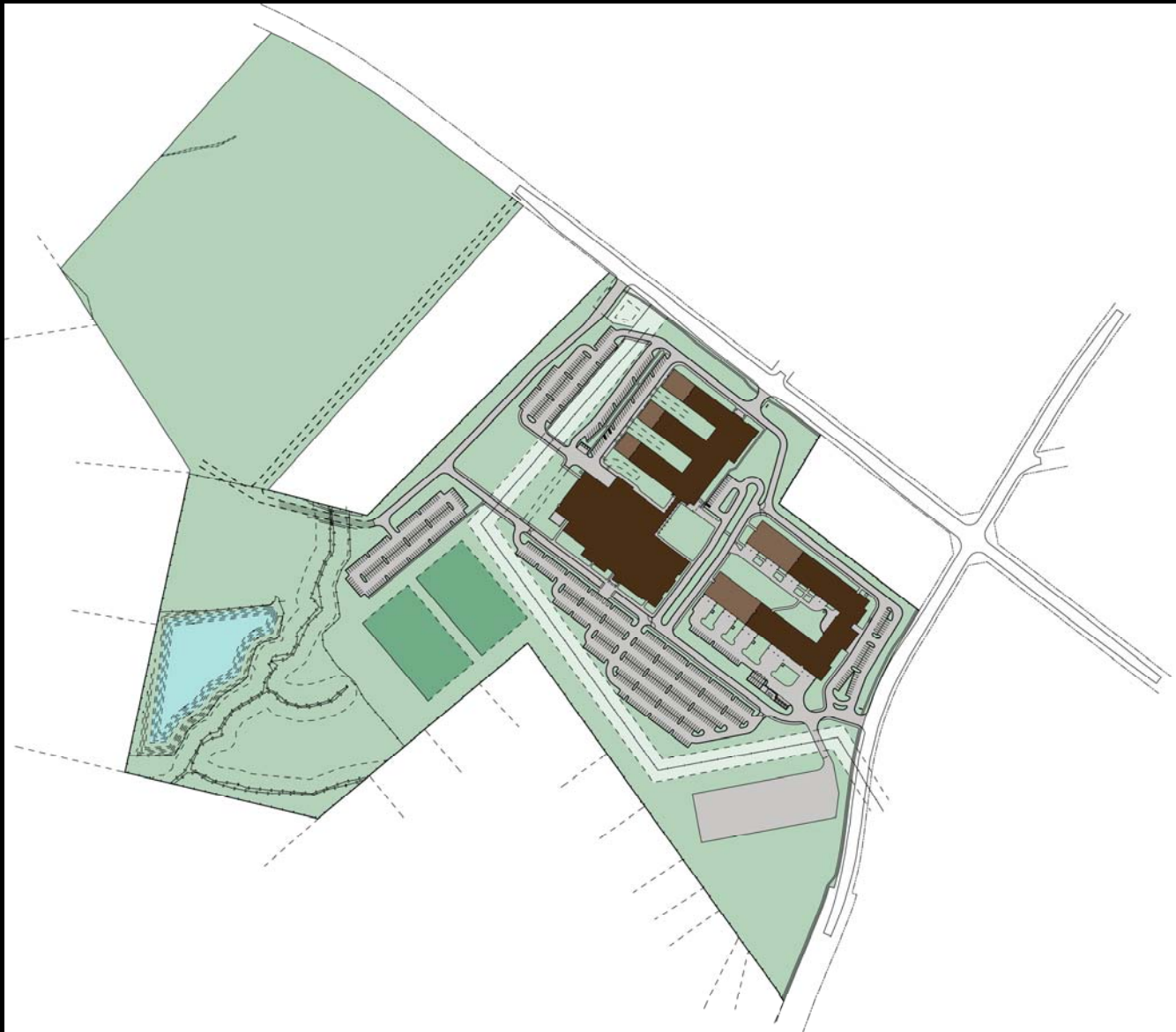
AERIAL



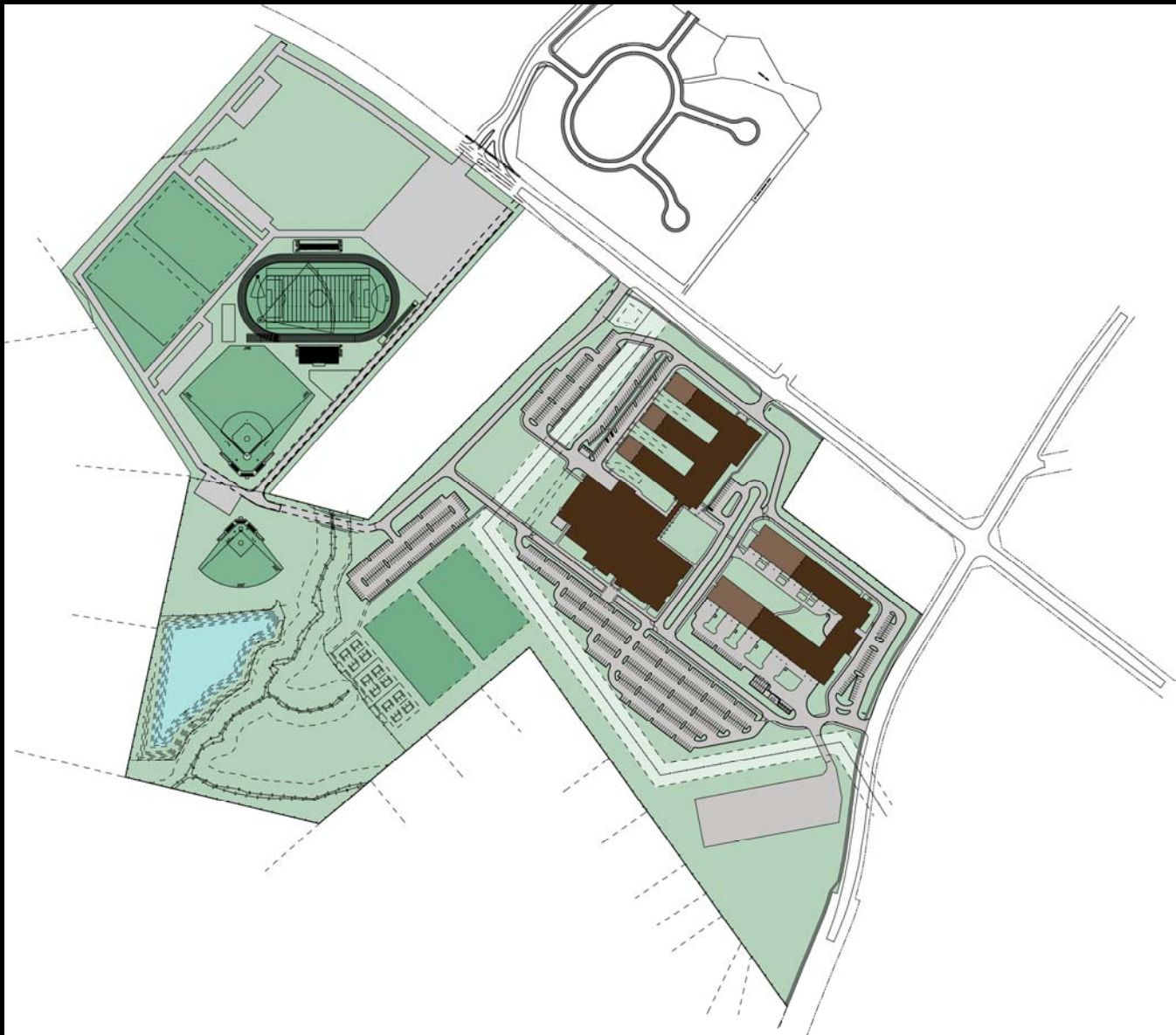
SITE PLAN – EXISTING CONDITIONS



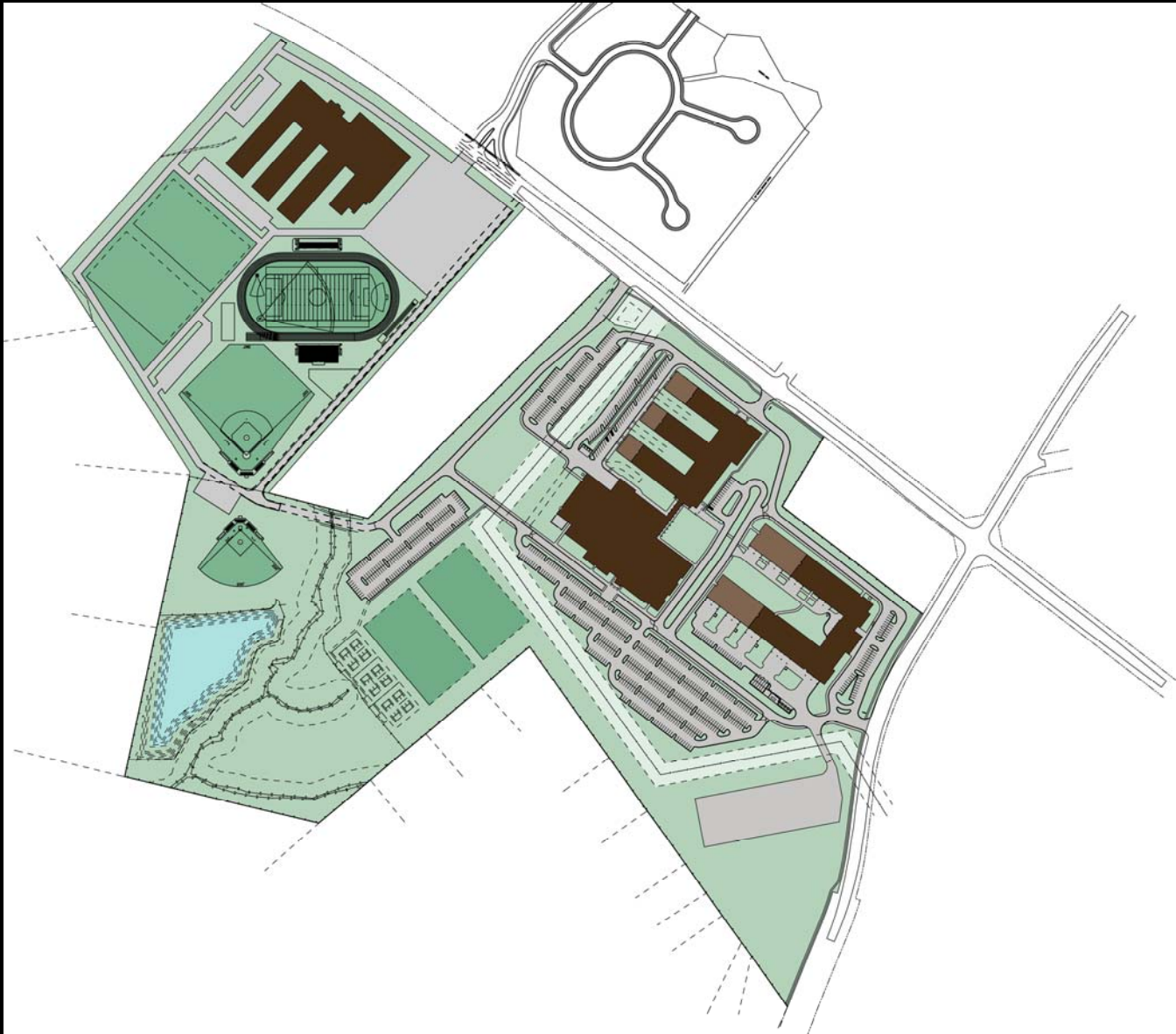
SITE PLAN – UTILITY RELOCATIONS



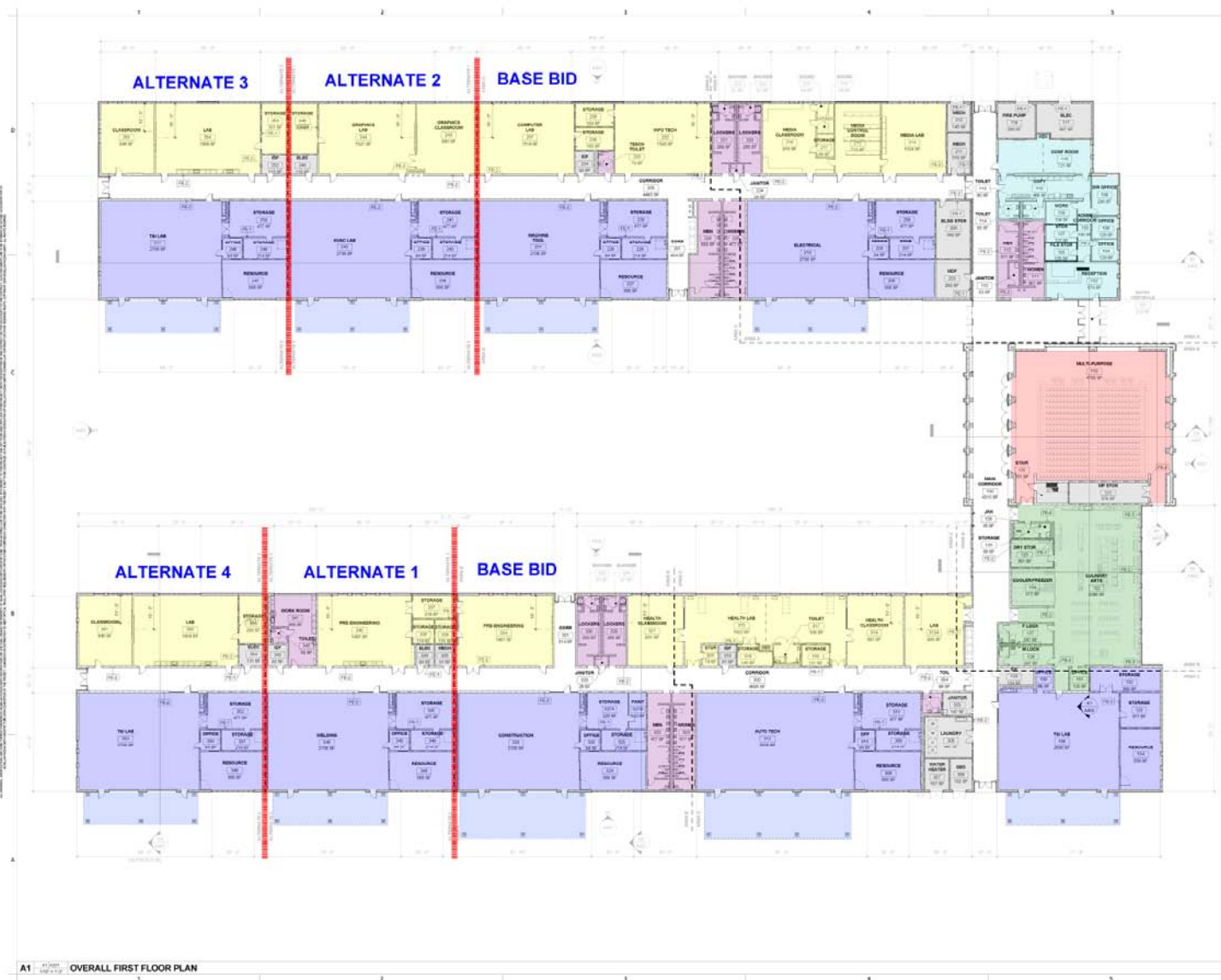
SITE PLAN – ALTERNATES & FUTURE ADDITIONS



SITE PLAN - ATHLETICS



SITE PLAN – MIDDLE SCHOOL



IOR R U#SODQ



P DIQ #HQWU\ #YHZ



IUR Q W#HOHYDWIR Q



FR UQ HU #YIHZ #R I #W) L#ODE



W) I#FDQRSIHV



G H W D I O # X I H Z



FIRST FLOOR PLAN



SECOND FLOOR PLAN



FRONT ENTRY

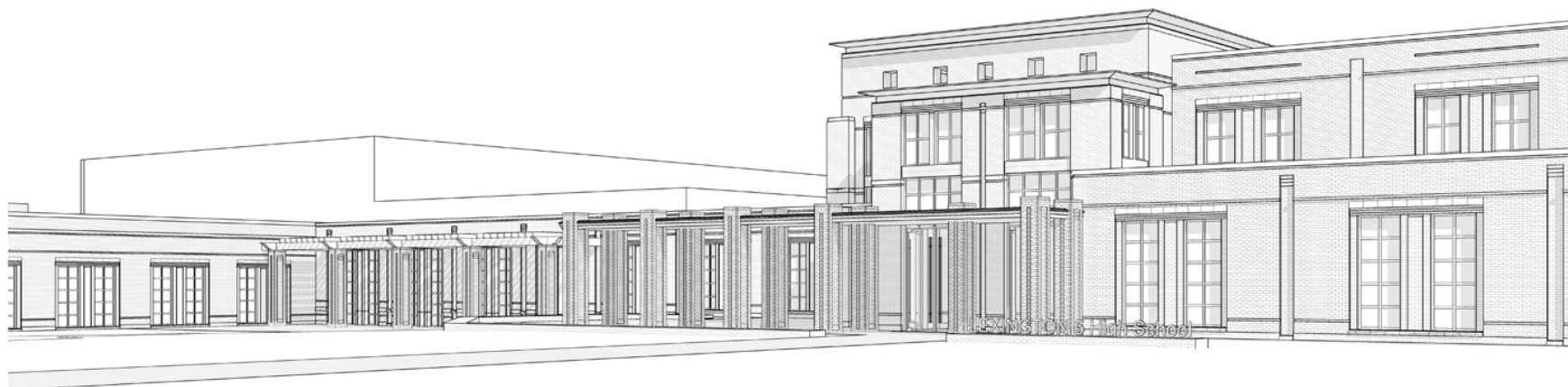


MAIN ENTRY

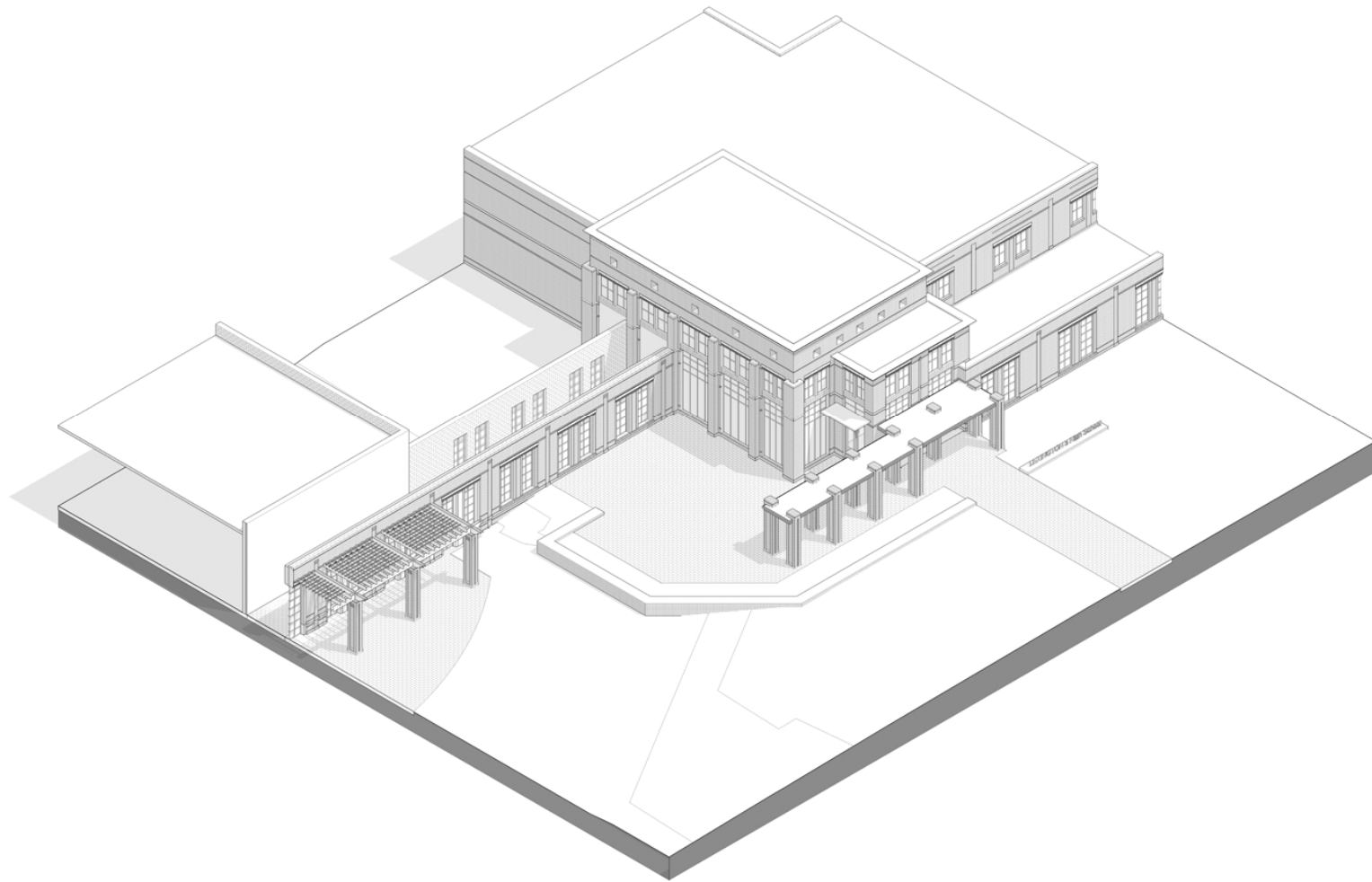


mcmillan|pazdan|smith
architecture

Q #I #Z ##K #L#J #K ##V #F #K #R #R #O



MAIN ENTRY

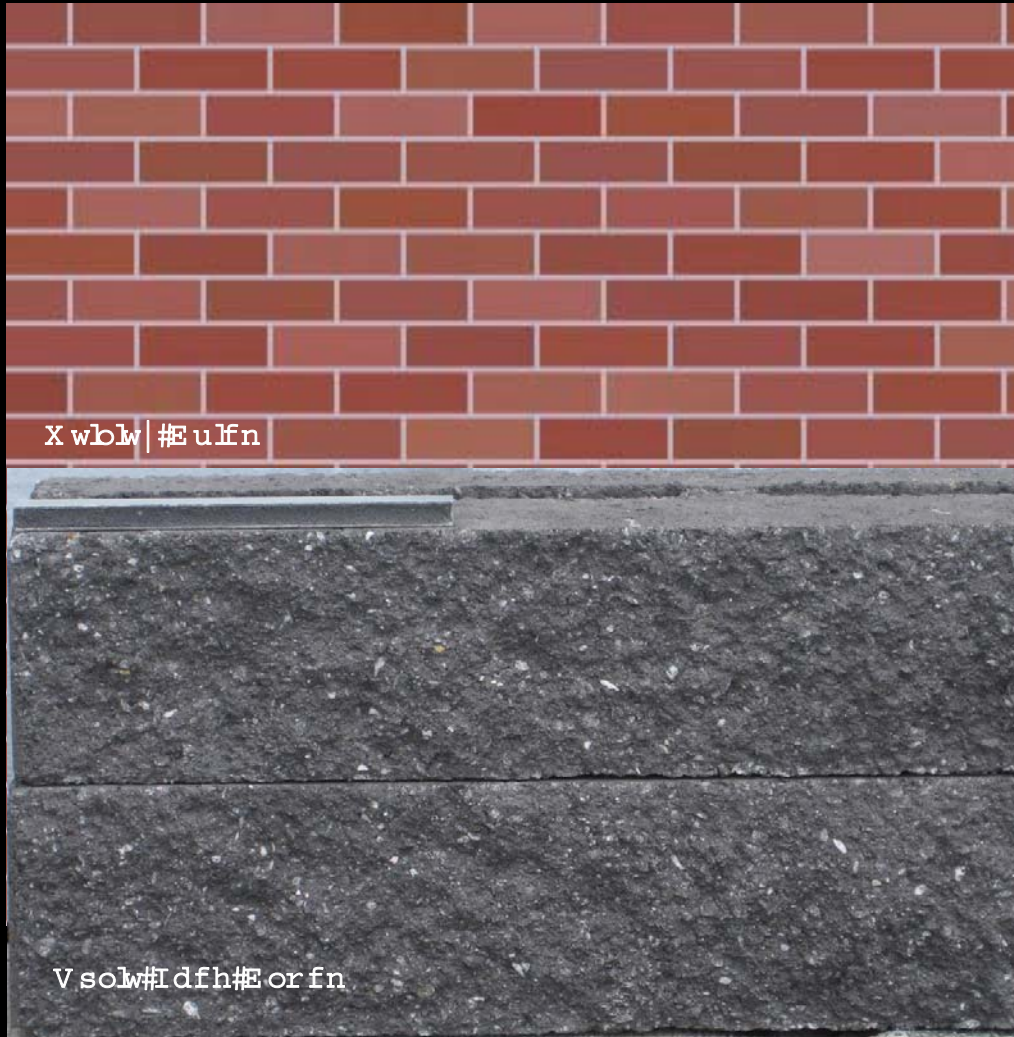


MAIN ENTRY



mcmillan|pazdan|smith
architecture

Q #I #Z ##K #J #K ##V #F #K #R #R #O



X wblw | #E ulfn

V solw #Idfh #E orfn



Surilbhg #P hwd o#S dqho

H [WHUIR U #P DWHUIDOV

F ##D ##W ##E

NEW HIGH SCHOOL

DQ G

C A T E C E N T E R

6th Viewing

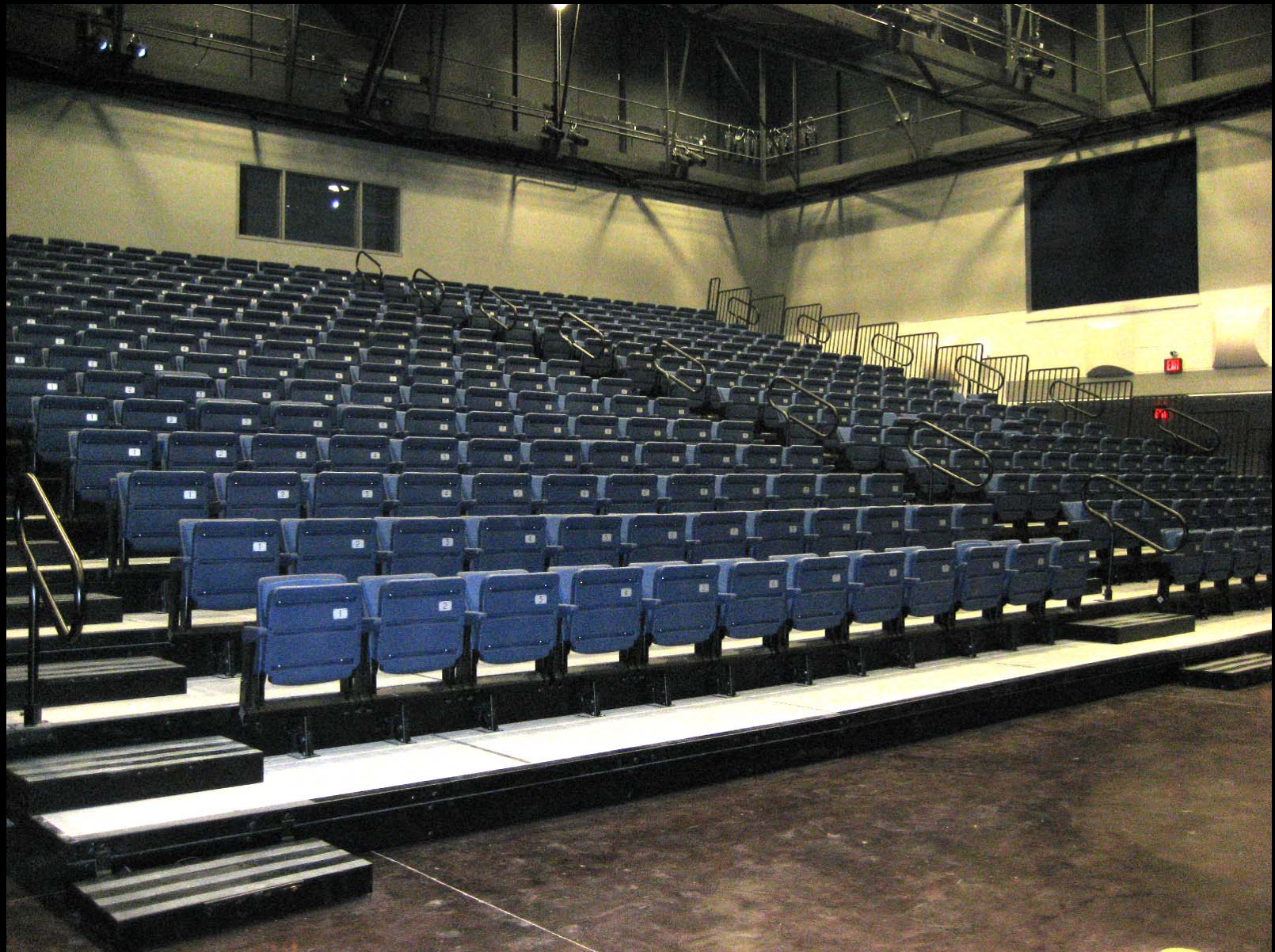
2nd Construction Documents Viewing

09.27.10



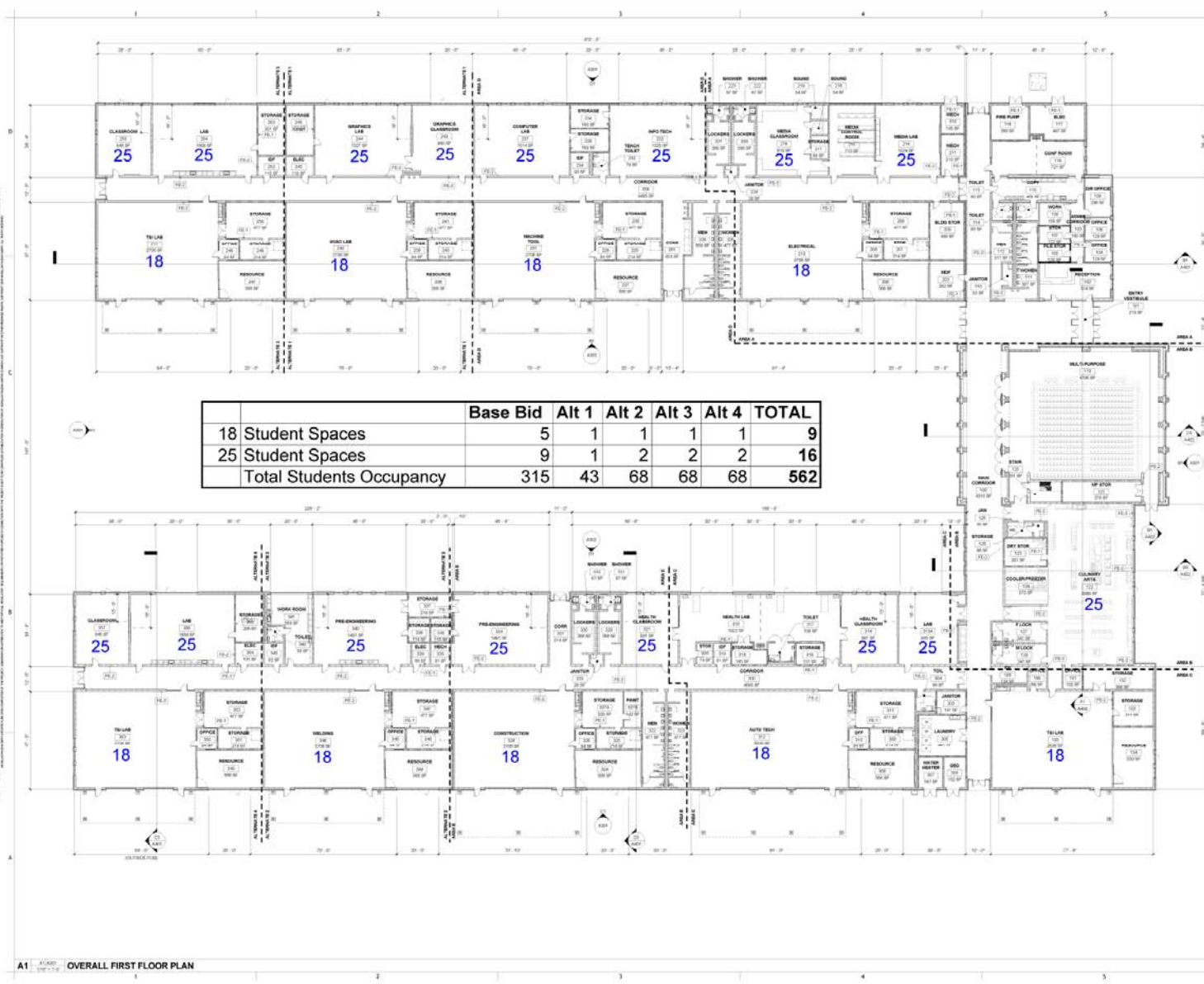
mcmillan|pazdan|smith
architecture











A1 - OVERALL FIRST FLOOR PLAN



NOT FOR CONSTRUCTION

DISTRICT 5 OF LEXINGTON & RICHLAND COUNTIES
CATE CENTER
AT KENNY CHURCH ROAD & BOSS PINE ROAD
IRMA, SOUTH CAROLINA



NOT FOR CONSTRUCTION

CONSTRUCTION DOCUMENTS SET

SHEET TITLE
OVERALL FLOOR PLAN

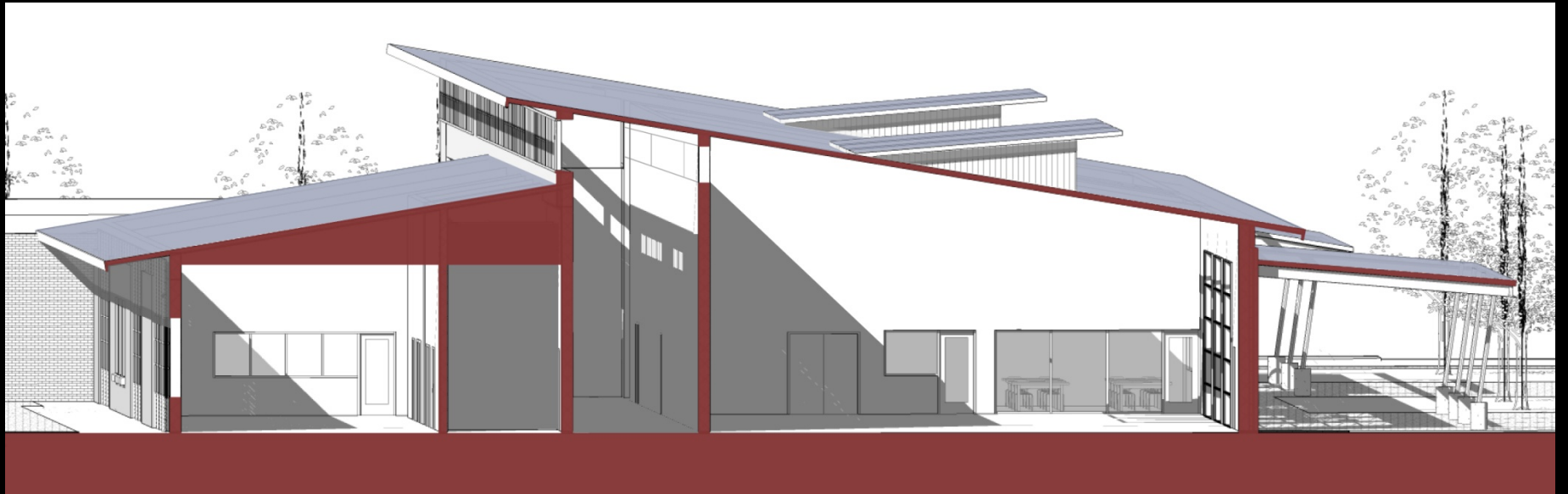
A101



IUR QW#HQWU\#GHVLIJQ#VF KHP HV

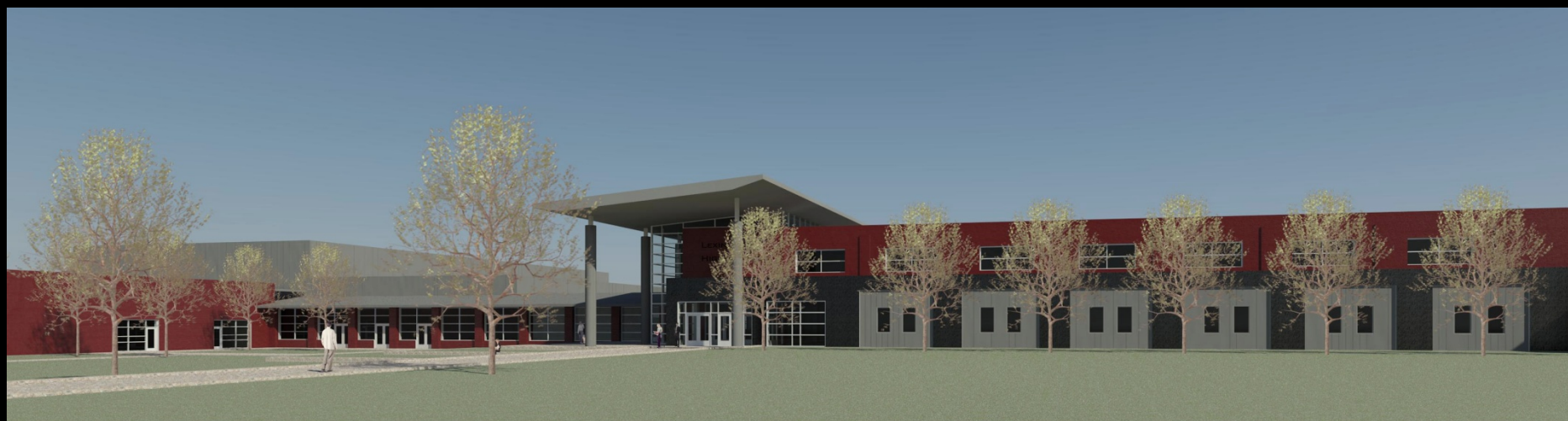


Q H Z # G H V L J Q # D W # I U R Q W # H O H Y D W I R Q

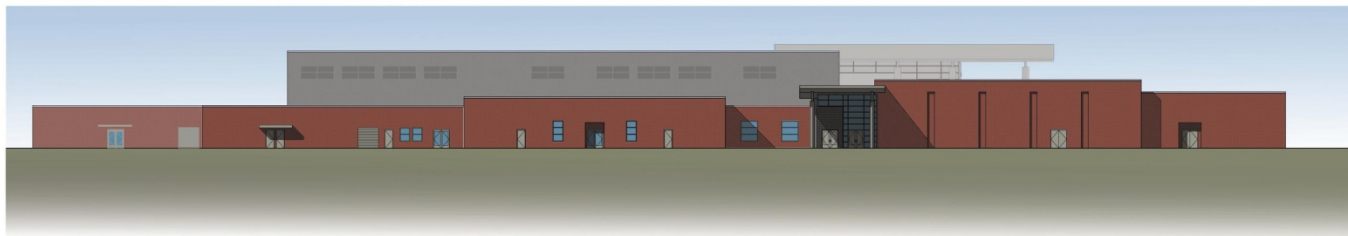
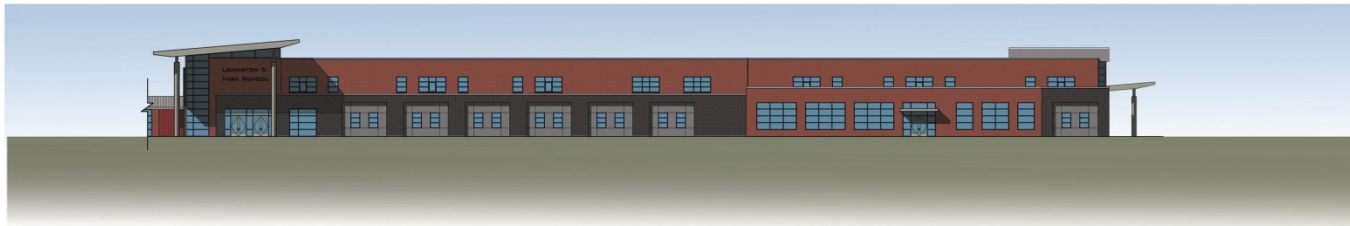




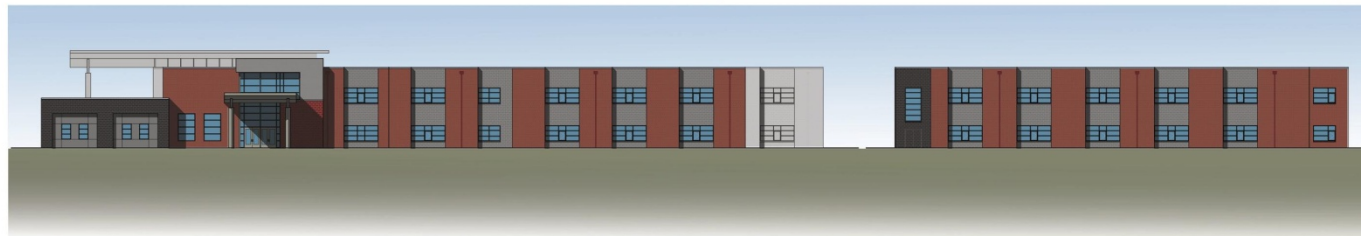
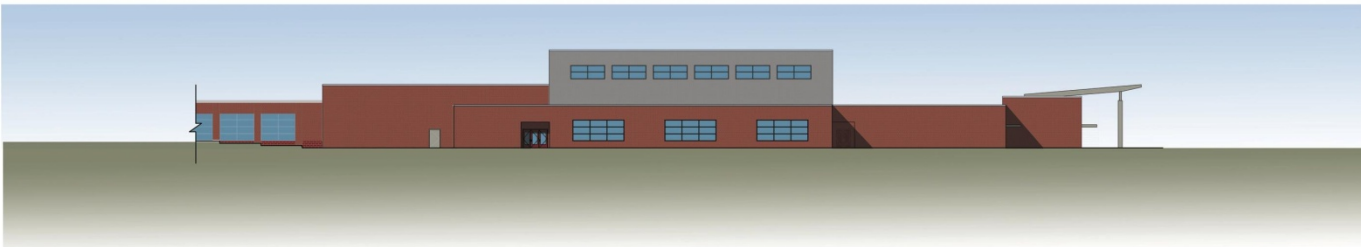
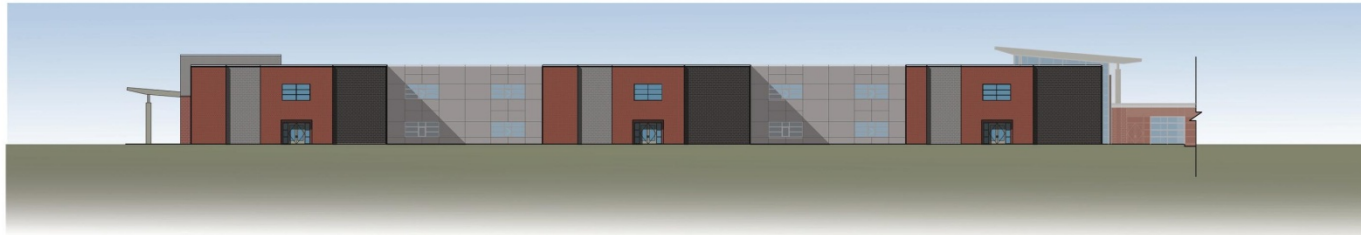
YIHZ #IUR P #FDWH#FHQWHU



IR FDO\$R IQ WV



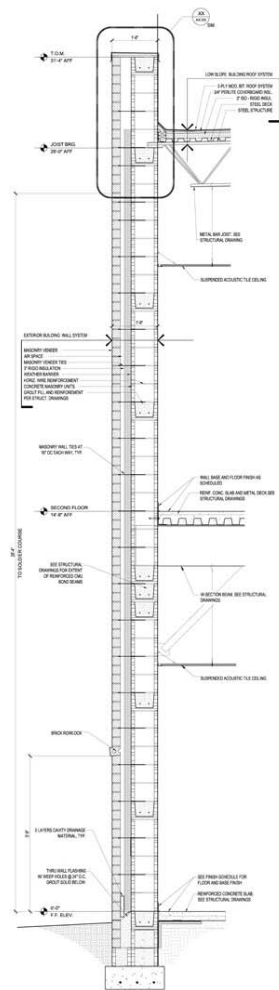
ELEVATIONS



ELEVATIONS



EAST ELEVATION AND ENLARGED ENTRY ELEVATION



Z D O O # V H F W I R Q # D Q G # H O H Y D W I R Q # P D W H U I D O # V W X G \



LEED is the nationally accepted benchmark for the design, construction, and operation of high performance green buildings.

LEED is a voluntary certification program that can be applied to any building type, including renovations to existing buildings.

LEED provides an independent third-party verification that a building was designed and built according to a whole-building approach to sustainability.

LEED promotes the design, construction, and operation of environmentally responsible, healthy places to live, work, and learn.

LEED participation is an outward demonstration of an organization's commitment to the environment, and healthy and energy-efficient work places for your employees, students, and the community.



BENEFITS of LEED

Reduces operating costs:

Lower utility, maintenance, and waste disposal costs

Improves Quality of Life:

Better Employee attraction/retention

Less absenteeism

Higher productivity, enhanced learning in schools

Enhanced occupant comfort and health

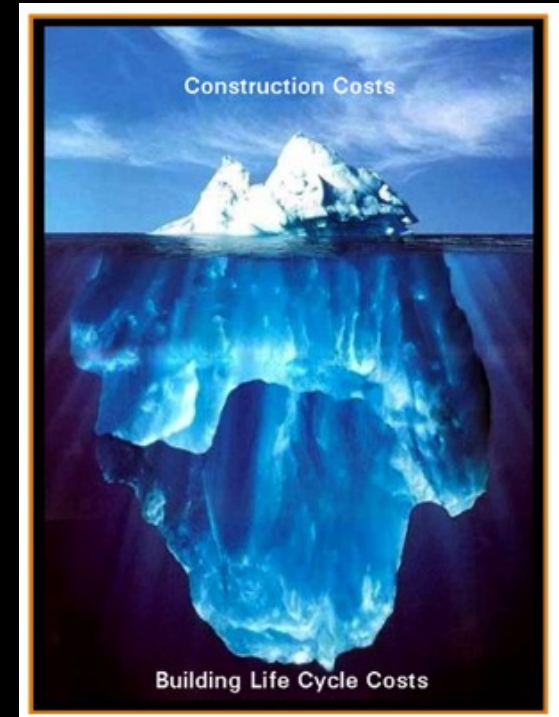
Reduces Impact of Natural Resource Consumption

Minimizes strain on existing local infrastructures

Provides independent documentation of achievement of your environmental goals and that the building is performing as designed.

Increased marketing and publicity exposure.

Certification may create an opportunity to take advantage of a growing number of state and local government incentives.



LEED CATEGORIES



Sustainable Sites

Discourages development on undeveloped land; minimizes a building's impact on ecosystems and waterways; encourages regionally appropriate landscaping; rewards smart transportation choices; controls storm water runoff; and reduces erosion, light pollution, heat island effect and construction-related pollution.



Water Efficiency

Encourage smarter use of water, inside and out. Water reduction is typically achieved through more efficient appliances, fixtures and fittings inside and water-wise landscaping outside.



Energy & Atmosphere

Encourages a wide variety of energy strategies: commissioning; energy use monitoring; efficient design and construction; efficient appliances, systems and lighting; the use of renewable and clean sources of energy, generated on-site or off-site; and other innovative strategies.



Materials & Resources

Encourages the selection of sustainably grown, harvested, produced and transported products and materials. It promotes the reduction of waste as well as reuse and recycling, and it takes into account the reduction of waste at a product's source.



Indoor Environmental Quality

Promotes strategies that can improve indoor air as well as providing access to natural daylight and views and improving acoustics.



Innovation in Design

Provides bonus points for projects that use new and innovative technologies and strategies to improve a building's performance`



Regional Priority

Addresses identified environmental concerns that are locally most important for every region of the country





LEED® for Schools

Total Possible Points**	110*
--------------------------------	-------------

	Sustainable Sites	24
	Water Efficiency	11
	Energy & Atmosphere	33
	Materials & Resources	13
	Indoor Environmental Quality	19

* Out of a possible 100 points + 10 bonus points

** Certified 40+ points, Silver 50+ points,
Gold 60+ points, Platinum 80+ points

	Innovation in Design	6
	Regional Priority	4



McMillan Pazdan Smith's Completed LEED Certified Projects:

QS/1 Data Systems Corporate Headquarters, Spartanburg SC	LEED NC, Silver 2005
Hubbell Lighting Corporate Headquarters, Greenville SC	LEED NC, Silver 2008
Mary Black Foundation (MBF) Office, Spartanburg SC	LEED NC, Gold 2007
Integral Solutions, Spartanburg SC	LEED NC, 2007
Centennial Hall, Lander University, Greenwood SC	LEED NC, 2008
SunTrust Upfit, MBF Building, Spartanburg SC	LEED CI, 2008
ICAR Collaboration 3, Clemson University, Greenville SC	LEED CS, Gold, 2009

In addition, McMillan Pazdan Smith currently has 20 projects in design or construction that are pursuing or considering LEED certification.



FIRST FLOOR PLAN



PHOTO



PHOTO



DUK V ##K #L#J #K ##V #F #K #R #R #O



PHOTO

 **mcmillan|pazdan|smith**
architecture

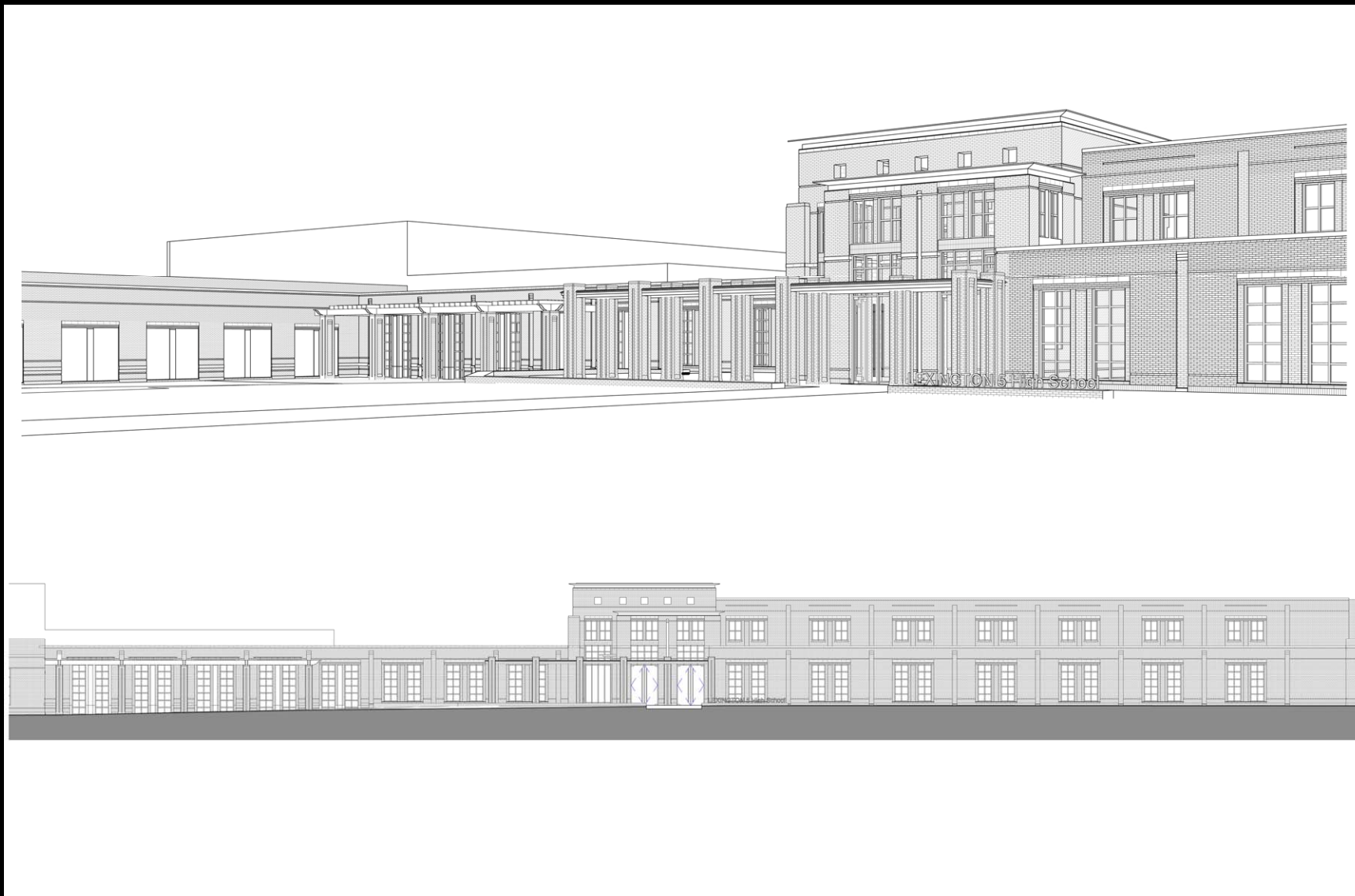
DUK V ##K #L#J #K ##V #F #K #R #R #O



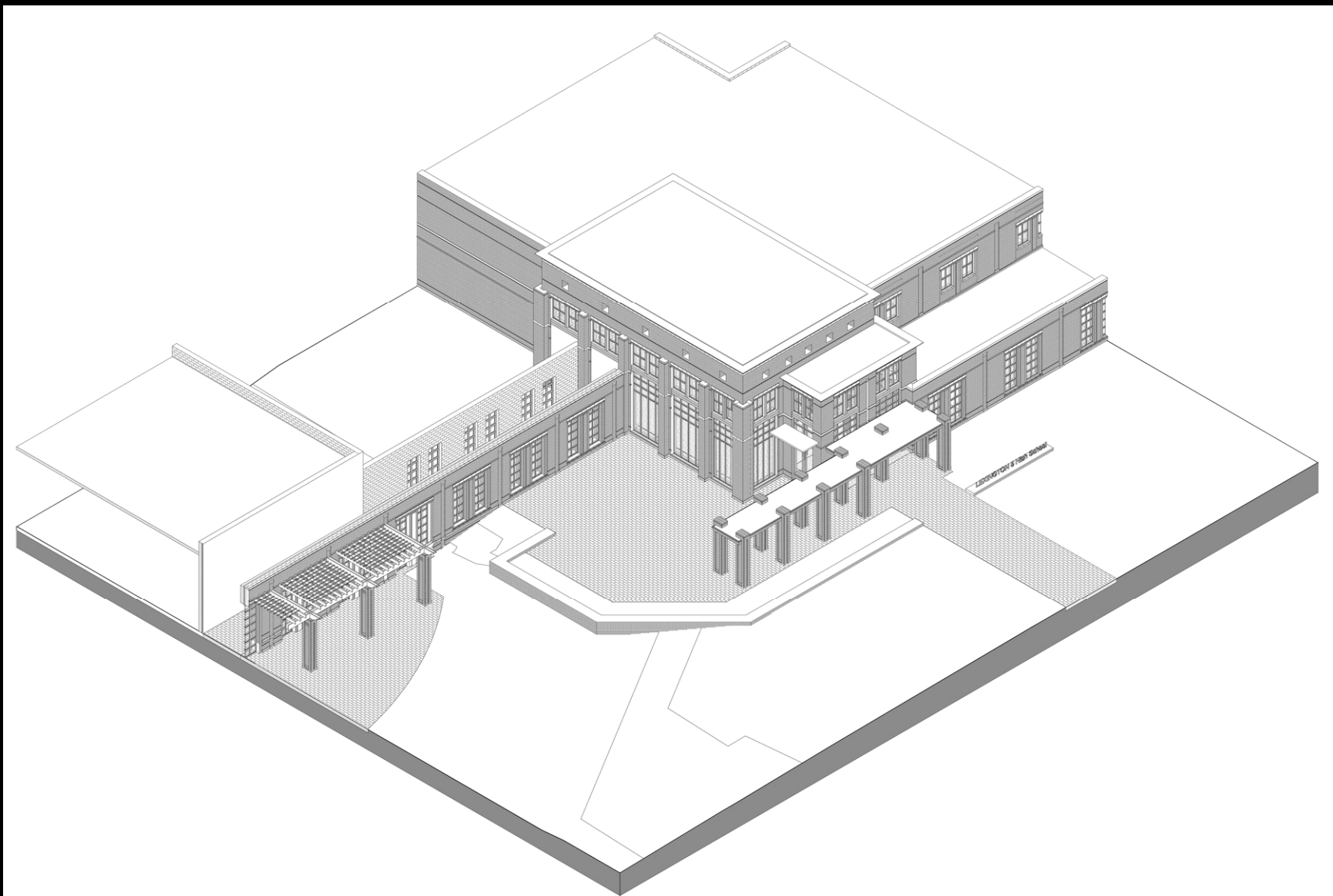
PHOTO

 **mcmillan|pazdan|smith**
architecture

DUK V ##K #L#J #K ##V #F #K #R #R #O



MAIN ENTRY



MAIN ENTRY