



# **SMALLER LEARNING COMMUNITIES**

Dutch Fork High School



# Project S.U.C.C.E.S.S.

*Successfully Uniting Careers, Classes, and Essential Student Services*





# **Project SUCCESS Objectives**

**Objective 1: Increase the percentage of students with significant below-grade-level deficiencies who pass the exit exam and end-of-course exams.**

**Objective 2: Increase the percentage of juniors and seniors completing at least two dual enrollment, AP and/or IB academic courses.**

**Objective 3: Increase the overall graduation rate and the graduation rate for AYP subgroups.**



## **Project SUCCESS Objectives**

**Objective 4: Increase the percentage of seniors who enroll, the semester following graduation, in a post-secondary institution, certificate/ apprenticeship program, the military, or advanced training**

**Objective 5: Decrease the percentage of out-of-school suspensions and expulsions for violent and/or criminal offenses.**

**Objective 6: Increase the percentage of students who are eligible for the LIFE and Palmetto Fellows scholarships**



## ***Beginning the Process...***

- Reviewed existing SLC initiatives and planned for their improvement
- Examined the district curriculum framework
- Developed an SLC teacher team to discuss structure of SLCs at Dutch Fork
- Requested teachers select schools of study

**School of Fine Arts and Humanities**

**Arts, Audio-Video Technology, and Communication Cluster**

- English
  - World Language
    - History
- Interdisciplinary Studies
  - AP
  - IB (IHS)
- Journalism
- Media Technology (IHS, DFHS)
- Performing Arts
- Visual Arts and Design

**Education and Training Cluster**

- Early Childhood Education (DFHS)
- Teacher Training

**School of Business Management and Information Systems**

**Business Management and Administration Cluster**

- Business Information Management
- General Management

**Finance Cluster**

- Accounting

**Hospitality and Tourism**

- No Majors Offered at This Time

**Information Technology Cluster**

- Interactive Media
- Programming and Software Development

**Marketing, Sales, and Service Cluster**

- Marketing Management

**School of Engineering, Manufacturing, and Industrial Technology**

**Agriculture, Food and Natural Resources**

- No Majors Offered at This Time

**Architecture and Construction Cluster**

- Architecture (CHS, DFHS)

- Carpentry (IHS)

- Electricity (IHS)

**Manufacturing**

- No Majors Offered at This Time

**Science, Technology, Engineering and Mathematics Cluster**

- Engineering and Engineering Technology

- Life Science
  - Mathematics
  - Physical Science

**Transportation, Distribution and Logistics Cluster**

- Automotive Collision Technology and Design (IHS)

- Automotive Service and Maintenance Technology (IHS)

**School of Health Science, Human and Public Services**

**Government and Public Administration Cluster**

- Government Service
- Military Science

**Health Science Cluster**

- Health Diagnosis and Treatment

- Medical Science and Research
- Physical Fitness

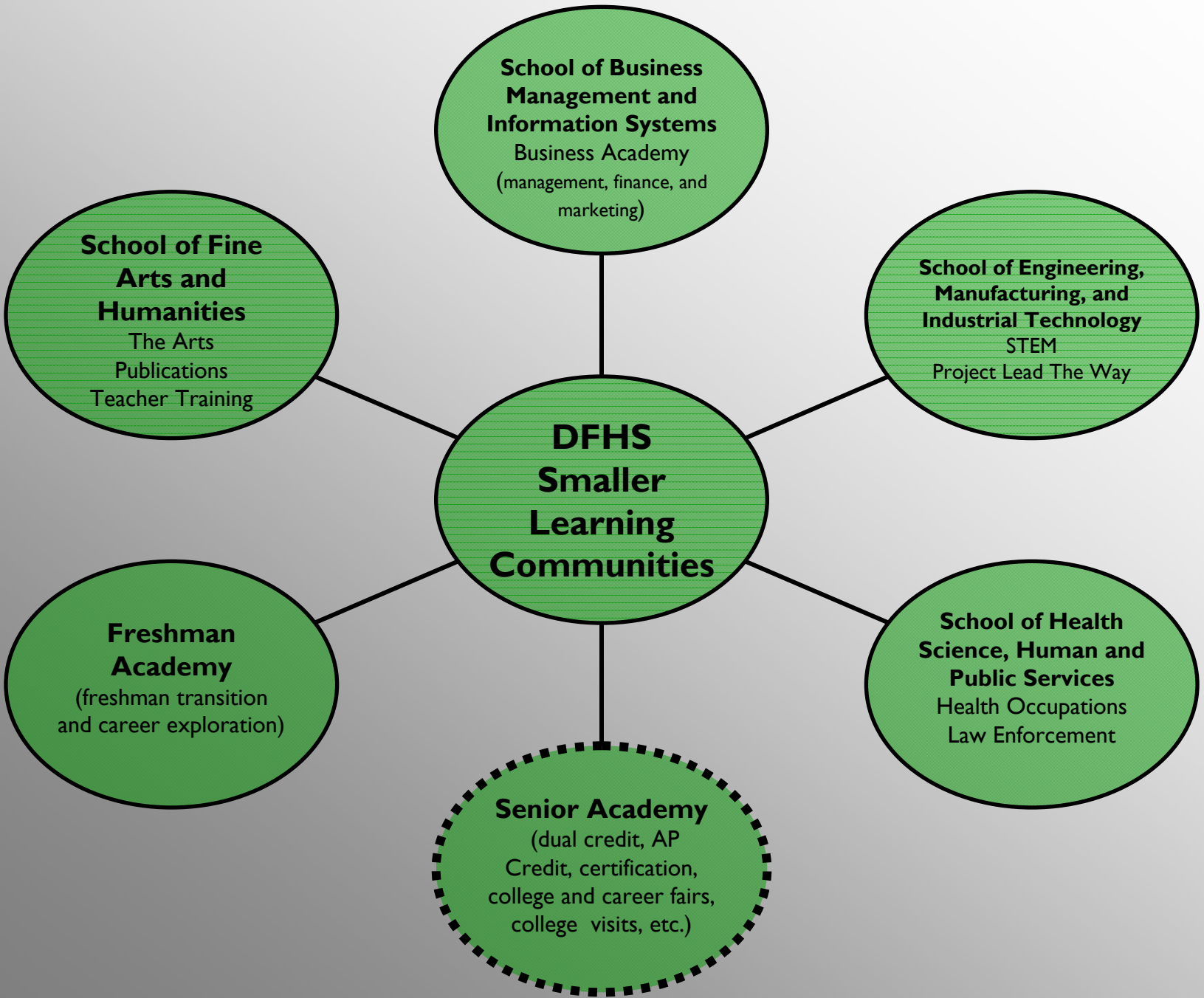
- Sports Medicine

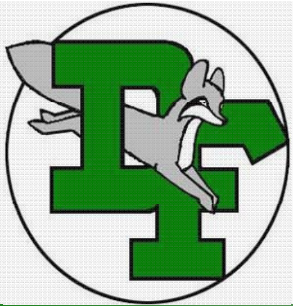
**Human Service Cluster**

- Cosmetology (IHS)
- Counseling, Mental Health, and Social Services

**Law, Public Safety, & Security Cluster**

- Law & Legal Services
- Law Enforcement (DFHS)



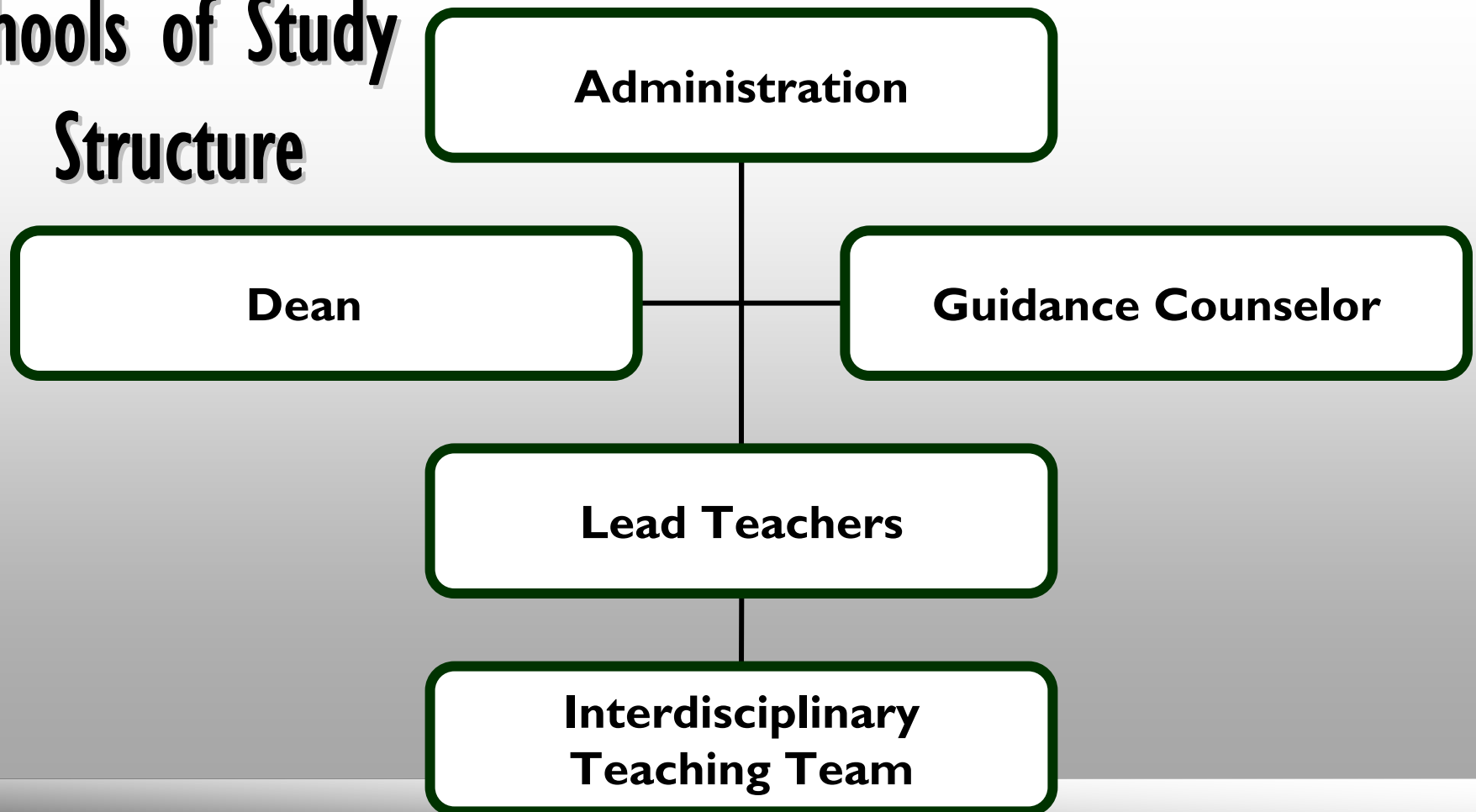


## ***Continuing the Process...***

- Continue examining existing SLC initiatives**
- Continue providing teachers professional development opportunities**
- Continue monthly meetings to further develop schools of study**
- Implement Freshman Academy– Fall 2010**
- Implement Schools of Study – Fall 2011**



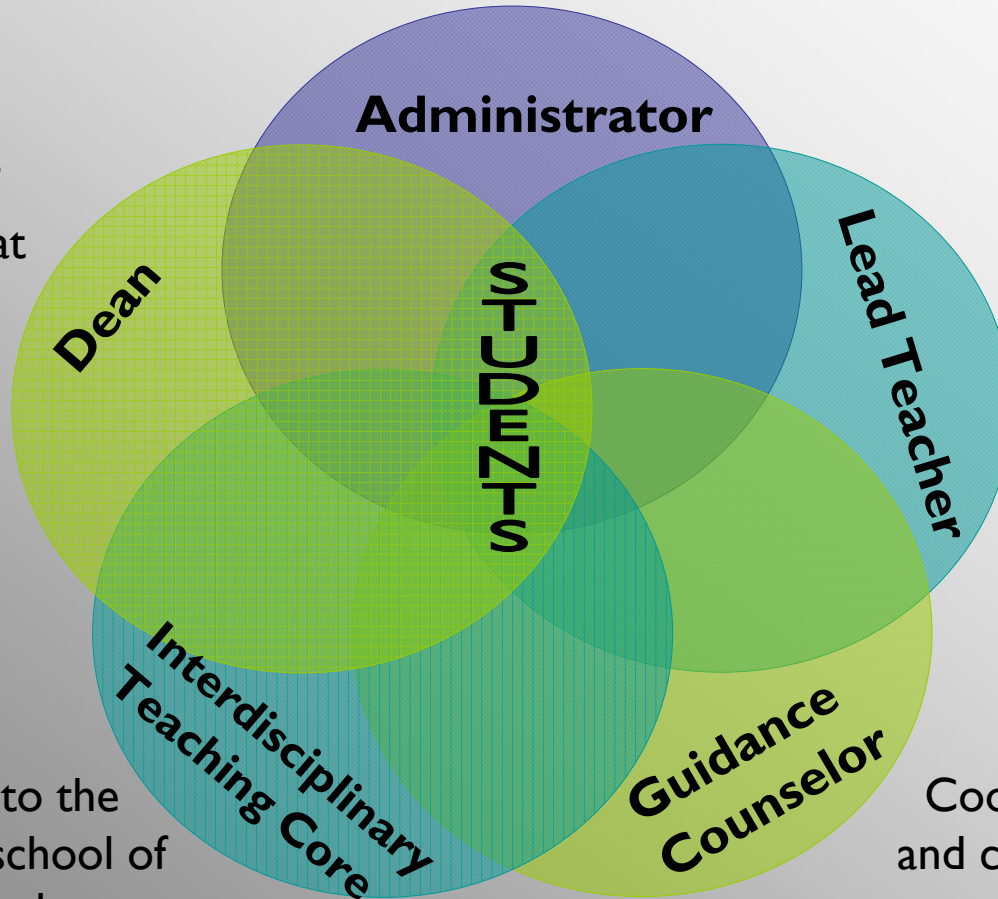
## Schools of Study Structure



# Schools of Study Structure

Liaison between administration and teachers in the designated school of study

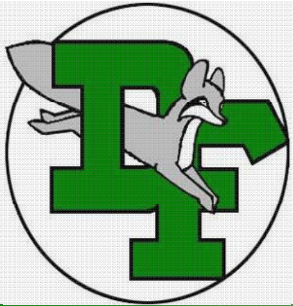
Liaison between the designated school of study and the school at large; coordinates interdisciplinary planning and teaching



Coordinates activities, communication, and curriculum for the team

Contributes to the growth of the school of study; teaches classes that support the mission and goals of the school of study

Coordinates college and career exploration opportunities for the designated school of study



## Each School of Study Will:

- ✓ Create an advisory board comprised of business leaders, community members, and school personnel
- ✓ Develop business and postsecondary institution partnerships
- ✓ Provide opportunities for workplace learning





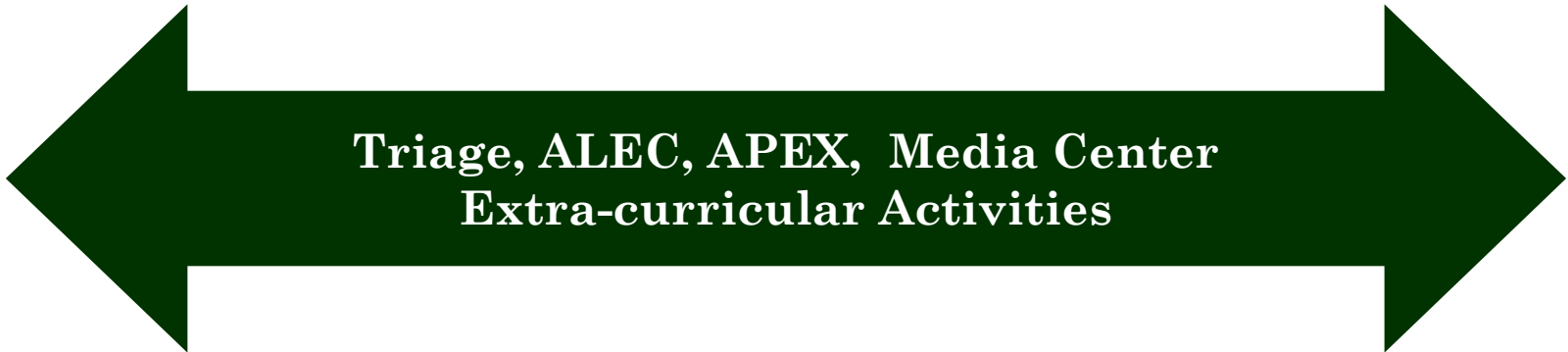
# **SLiC**

**Supporting, Leading and investing in Careers**



**Senior Academy**

10<sup>th</sup>, 11<sup>th</sup>, 12<sup>th</sup> Grade



**9<sup>th</sup> Grade Academy—Freshman Success & Den**

9<sup>th</sup> grade



**Summer Bridge & Freshman Orientation**



**SLiC**  
Supporting, Leading and investing in Careers

## **Start with the Foundation...**

9<sup>th</sup> grade

9<sup>th</sup> Grade Academy—Freshman Success & Den



Summer Bridge & Freshman Orientation



# Why a Freshman Academy?

Research Shows:

1. Students fail 9<sup>th</sup> grade more than any other grade. Therefore, we must do something different.
2. Schools with ***extensive transition programs*** have a drop out rate of only 8% vs. schools without such programs at 24%.
3. Grades and attendance are the two biggest predictors of dropouts. Small, integrated teams can better track students and intervene earlier.



## **IN ADDITION**

Research also shows that transition academies must have the following to be successful:

- United teams, located in close proximity, creating common high expectations
- Pure teams with common planning
- Built in academic support
- Needs-based staffing and scheduling



## **Our Goals**

1. Provide a smooth transition from middle to high school, focusing on educational, structural and organizational skills.
2. Prepare students with the necessary knowledge and skill sets to choose their career path.
3. Reduce failure and drop-out rates at DFHS
4. Build a nurturing, caring, familial environment with high expectations within the walls of a large high school.



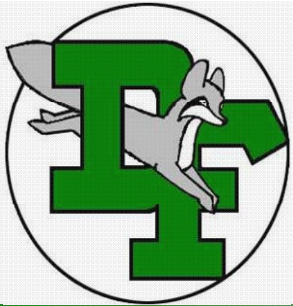
**Administration**

**FA Dean**

**Guidance Counselor**

**1 Lead Teacher Per  
FA Team**

**4 Interdisciplinary  
Teaching Teams**



## **ACADEMY STRUCTURE**

1. All classrooms on 300 level/hallway
2. 16 core teachers divided into 4 teams
  1. 125 Students per team
  2. 21 Students per class
3. Each teacher has full freshman class-load
4. Common team planning



## **Freshman Academy Key Components:**

- ✓ Interdisciplinary planning and teaching
- ✓ Academic Support for Struggling Students
- ✓ PBIS
- ✓ Summer Bridge
- ✓ Freshman Orientation
- ✓ Freshman Success



**SLiic**  
Supporting, Leading and investing in Careers

be involved.  
make an impact.  
invest in  
the future.  
be the i in  
**SLiic**  
Support Leading and investing in Careers