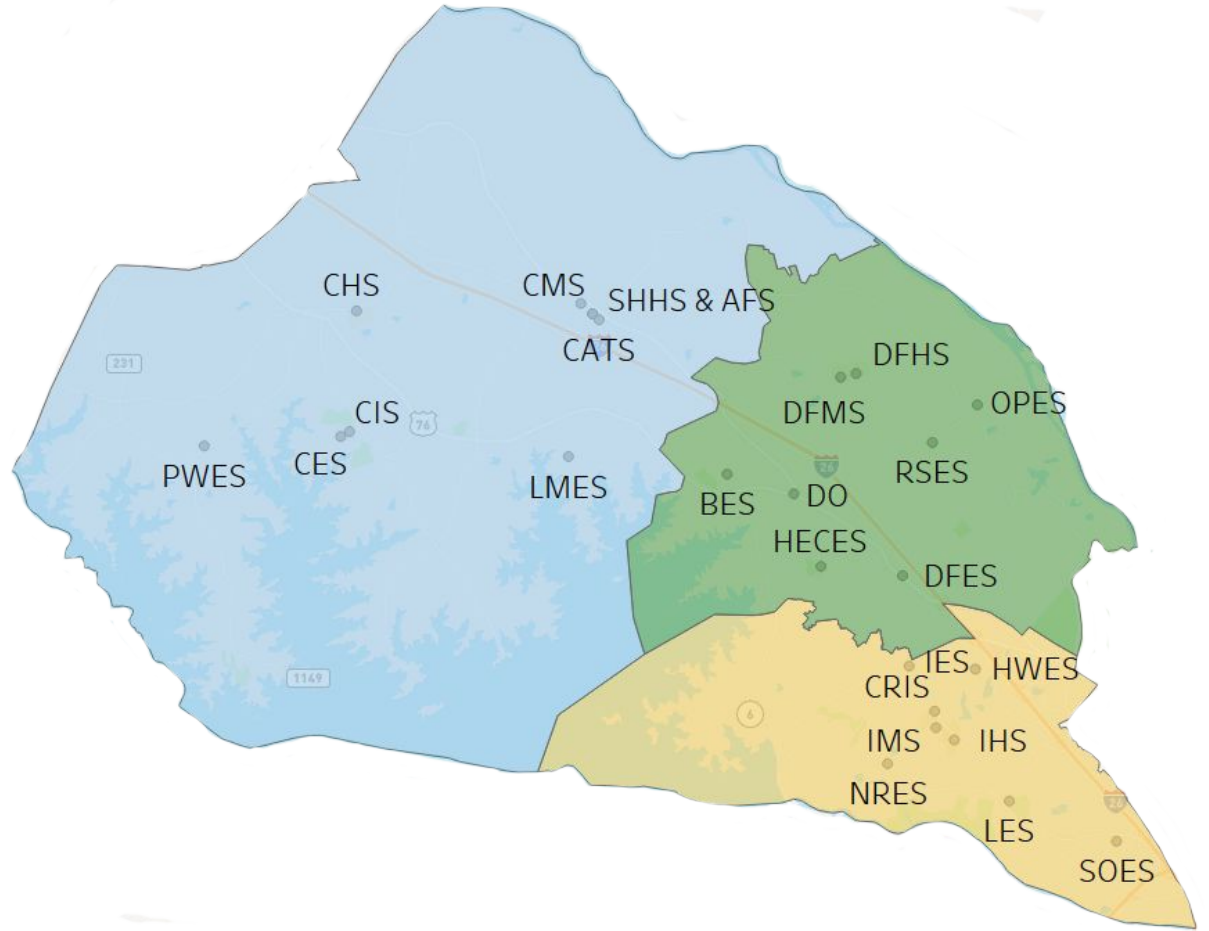




# Building a Strong Educational Foundation for



**District Five**  
OF LEXINGTON & RICHLAND COUNTIES





# Facilities Master Plan Guiding Principles

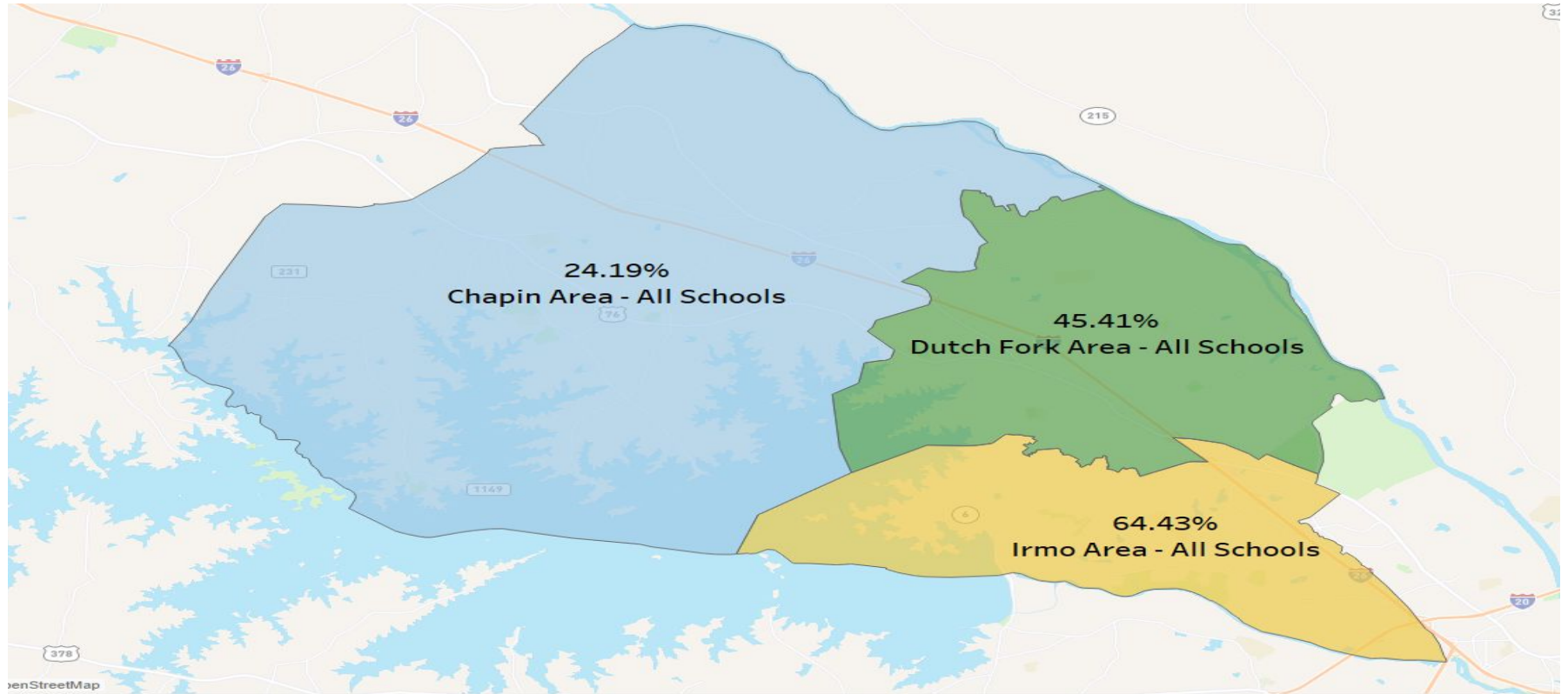


1. Community Analysis
2. Facilities Need Assessment
3. Enrollment and Projections
4. Instructional Plan Review
5. Plan



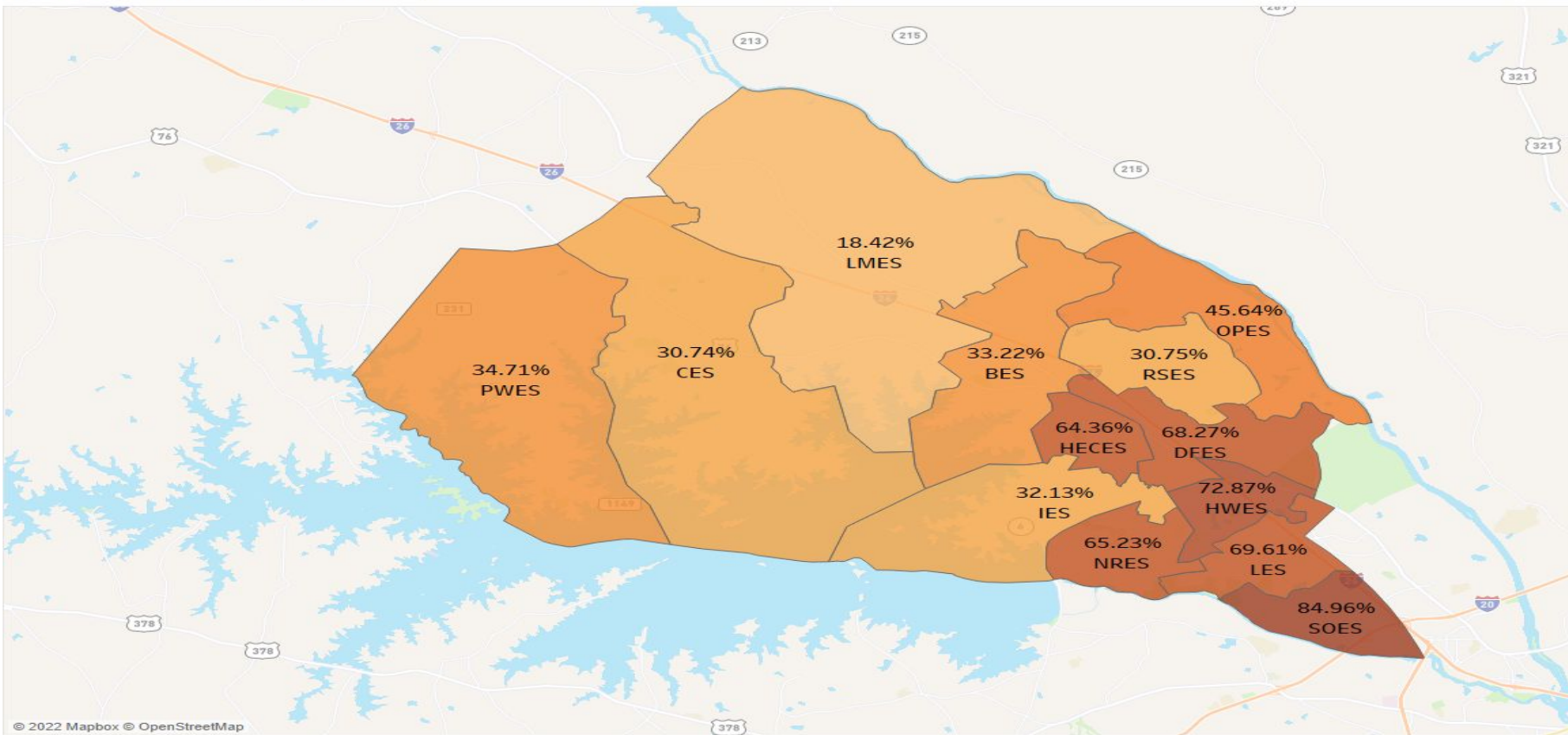
# Community Analysis

## Pupils in Poverty in School District Five of Lexington and Richland Counties



# Pupils in Poverty in School District Five of Lexington and Richland Counties (2022 - 135th day report)

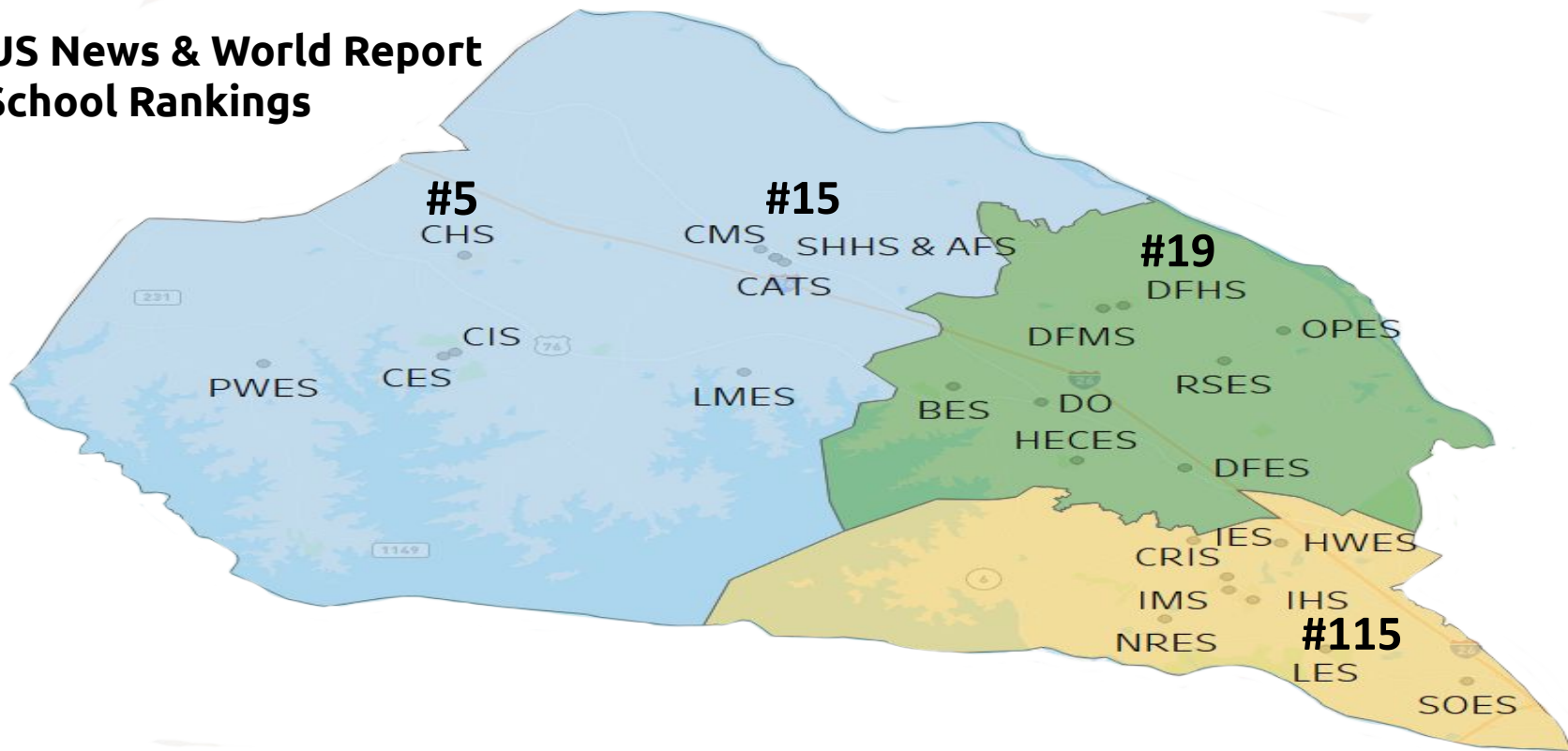
Percent Pupils in Poverty - By Elementary School





# Instructional Plan Review

## 2021 US News & World Report High School Rankings





# Facilities Need Assessment

## Facility Rating Chart

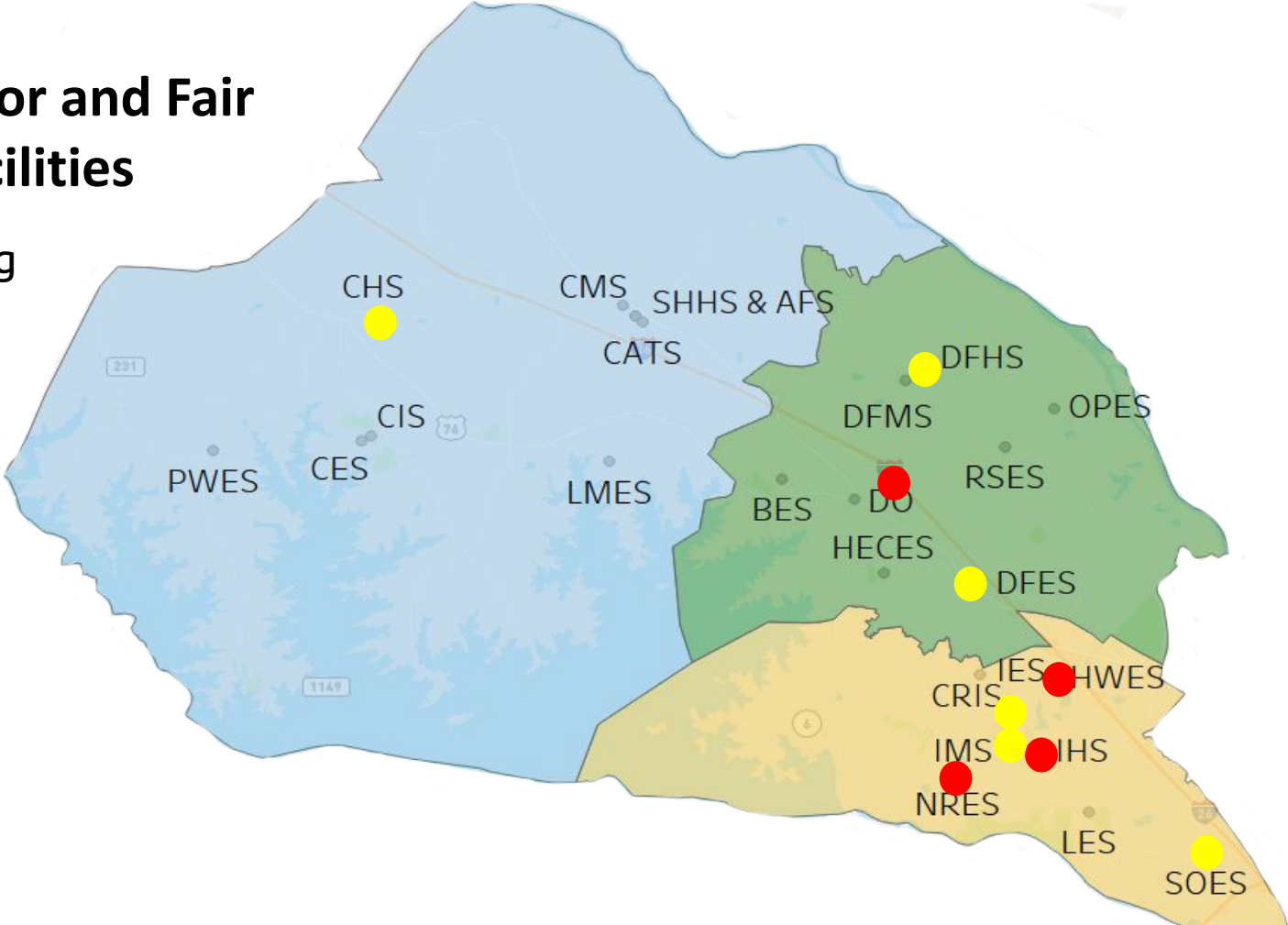
Excellent	4
Good	10
Fair	6
Poor	4
Total	24

2019 District-Wide Facilities Need Assessment by M.B. Kahn Construction Co., Inc. had three (3) goals:

1. To assess the District's current facilities' conditions, uses and maintenance needs
2. To offer options to address school operations issues, such as aging structures
3. To provide construction strategies responsive to future uses and learning methods in light of funding constraints, existing projects and plans, and current facility conditions

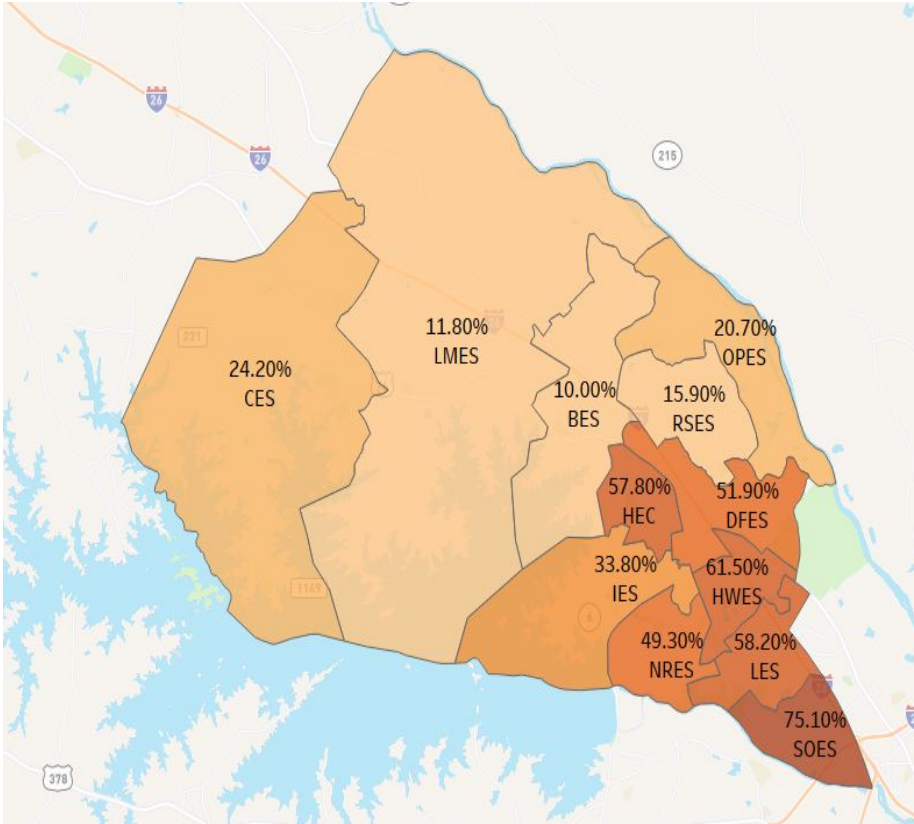
# Location of Poor and Fair Rated Facilities

- Poor Rating
- Fair Rating

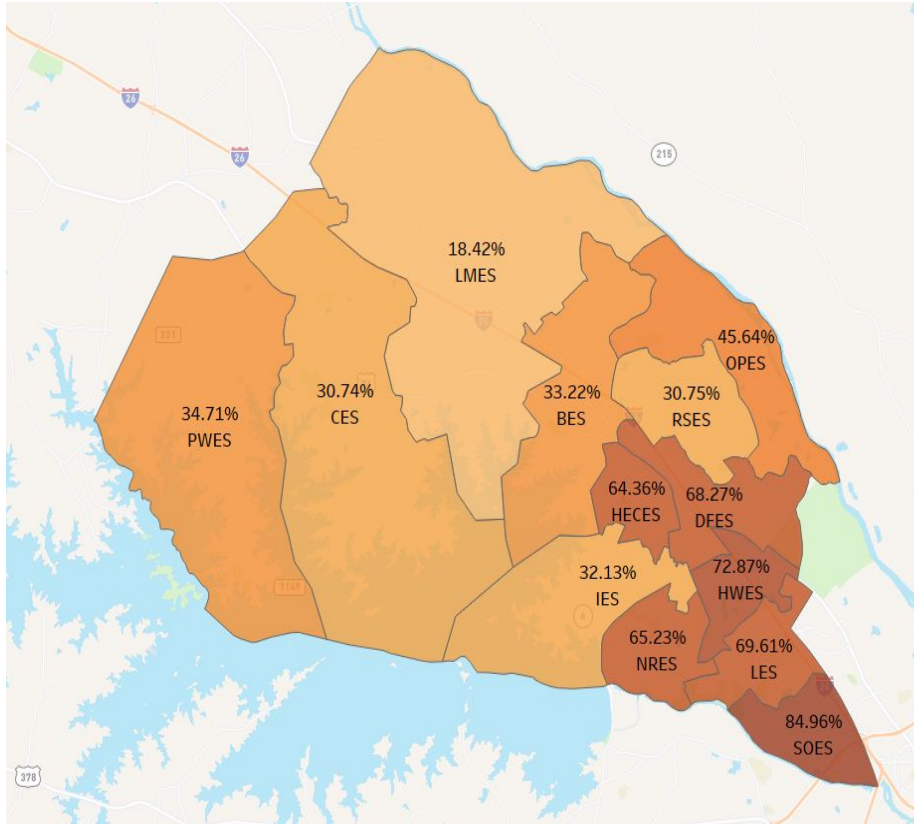


# Pupils in Poverty in School District Five of Lexington and Richland Counties

## 2011



## 2022



# Alternative Education Programs

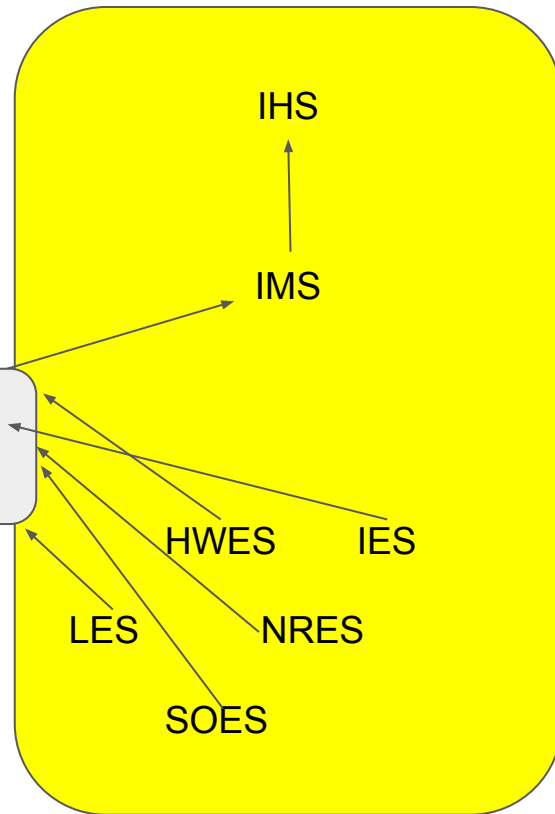
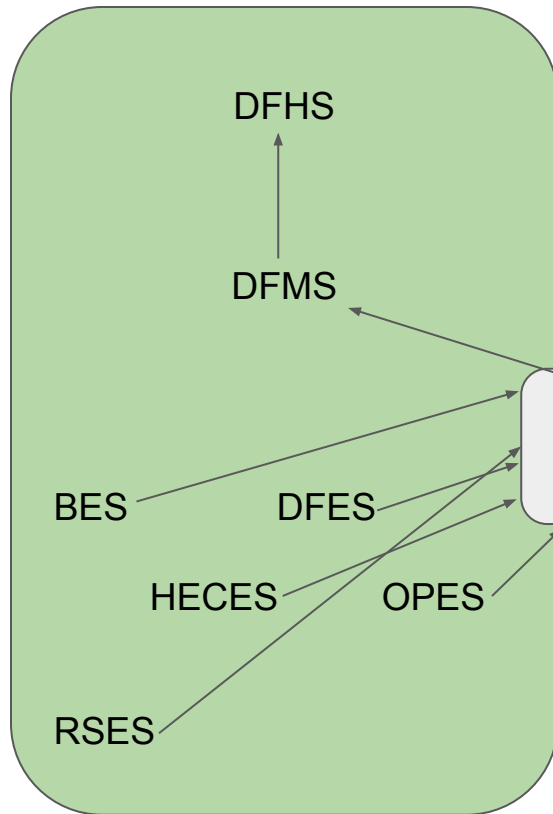
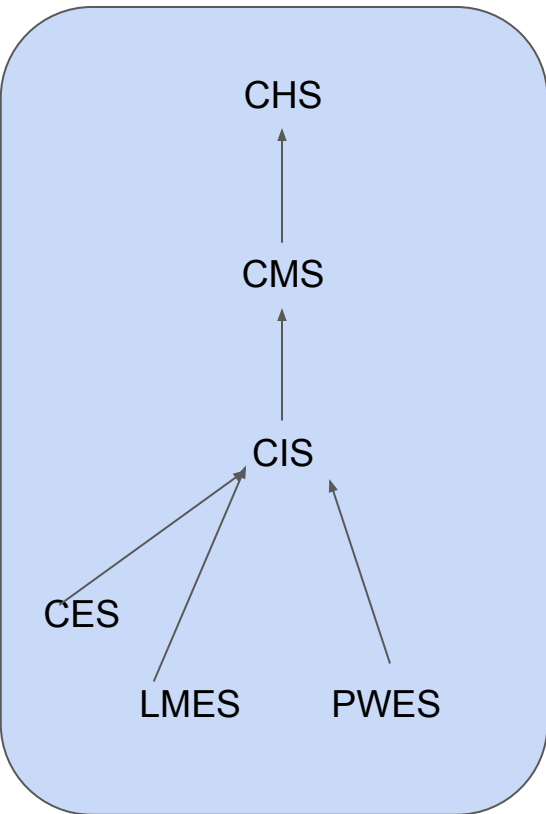
SHHS

Academy for Success

Adult Education

The Center for Advanced Technical Studies

Flexible Innovative Virtual Education (FIVE)



## Alternative Education Programs

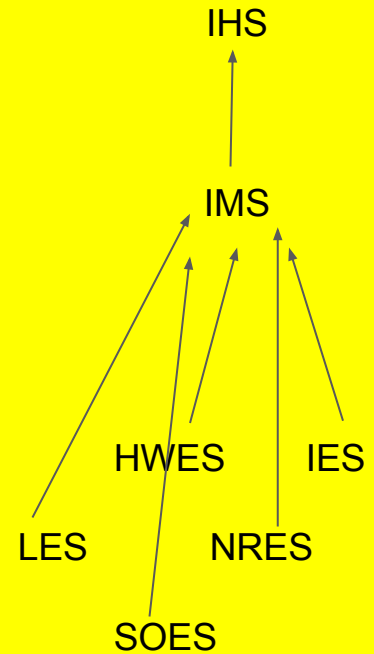
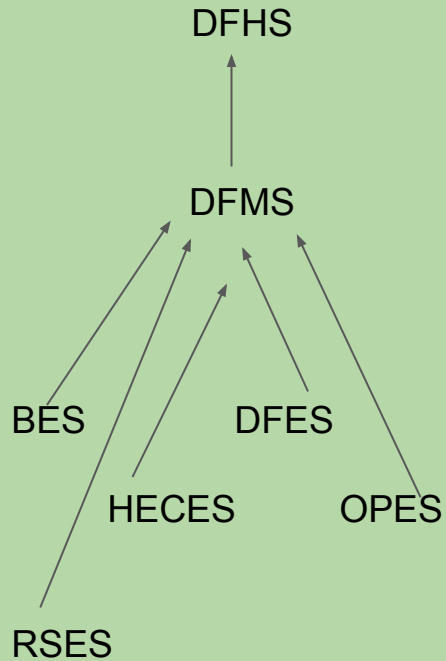
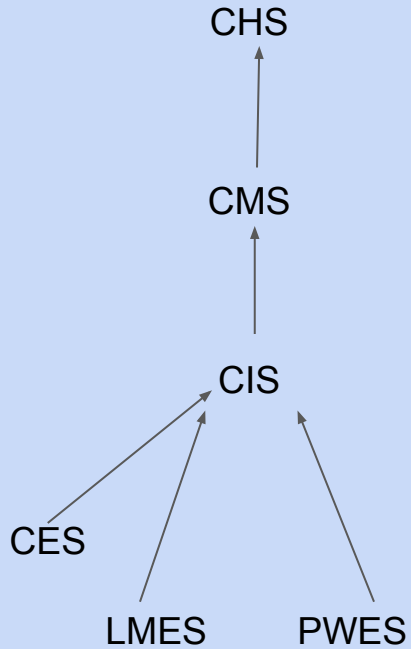
SHHS Academy for Success

Adult Education

Crossroads Early Childhood Center

The Center for Advanced Technical Studies

Flexible Innovative Virtual Education (FIVE)





# Recommendation: Board Facilities Committee meet to consider the following:

Option 1	Take no action on the remaining poor or fair Rated Facilities	Cost: Unknown
Option 2*	Borrow <b>Above</b> our Millage	\$275 Million** and Increase Taxes Addresses All D5LR Schools
Option 3*	Borrow <b>At</b> our Millage	\$130 Million** and Maintain Tax Rate ( <b>69.5 Mills</b> ) Addresses All D5LR Poor and Fair Facilities
Option 4*	Borrow <b>Below</b> our Millage	\$130 Million**, Lower Taxes, Longer Payoff time and More Interest ( <b>68.5 Mills</b> ) Addresses All D5LR Poor and Fair Facilities

\*OPTIONS 2, 3 and 4 WILL REQUIRE A Bond Referendum

\*\* Amounts are estimates of cost and do not include inflation

# Options #3 & #4 Board Referendum Projects

Project	Est. Cost (millions)	Phase (years)
Dutch Fork Middle 6 <sup>th</sup> Grade Wing	11	2023-2025
Irmo Middle 6 <sup>th</sup> Grade Wing	11	2023-2025
Professional Development Wing - DO	4	2023-2025
CrossRoads Renovations	3.5	2025-2026
Nursery Road Elementary Remodel (or New Building)	17.5 (25)	2025-2027
Harbison West Elementary transition	1	2027
New Dutch Fork Elementary	34.5	2023-2025
Alt. Education Building transition	2	2025-2026
Dutch Fork High Renovation	3	2023-2024
Chapin High Fine Arts Building	25	2024-2026
Dutch Fork High Press Box upgrade	4	2023-2024
Irmo High Press Box upgrade	4	2023-2024
Early Childhood Center Equipment	1	2026-2027
Seven Oaks Elementary Security Upgrades	1	2026-2027
Total	122.5 (130)	2023 - 2027

# School Finance 101

Millage – a tax on real estate or other property

## Operations Millage-

Salaries, Benefits,  
Supplies, Utilities,  
Maintenance



4% Property

100% Rebate



6% Property

0% Rebate

## Debt Service Millage -

Construction,  
Technology, Equipment  
and Renovations



4% Property

Partial Rebate



6% Property

0% Rebate



# School Finance 101

Bond Referendum – debt a school district assumes through the sale of general obligation (G.O.) bonds to pay for large capital projects



The annual sale of G.O. Bonds provides the school district with a spending card.

The spending **limit is 8%** of the total assessed value of the Lexington and Richland county assets in the attendance zone.

Our school district borrows the maximum every year and pays down the principal and interest with **Debt Service millage**



4% Property

Partial Rebate



6% Property

0% Rebate

**Voters must approve the sale of bonds above 8% limit.**

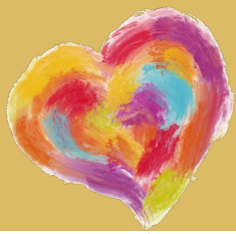
Total Assessed Value of D5LR:  
\$586,383,014

Option #1: 8% Limit  
\$46,910,641  
No Change in Taxes

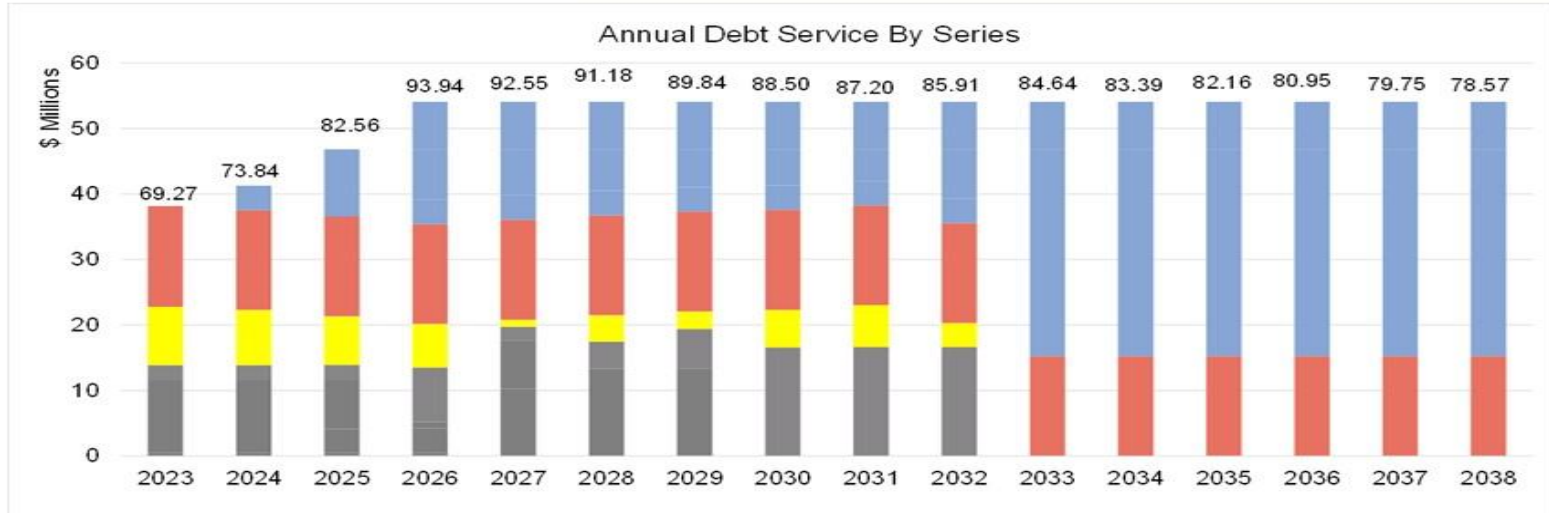
Option #2: 46% of Assessed Value  
\$275,000,000  
Increase in Taxes

Option #3: 22% of Assessed Value  
\$130,000,000  
No Change in Taxes

Option #4: 22% of Assessed Value  
\$130,000,000  
Small Decrease in Taxes

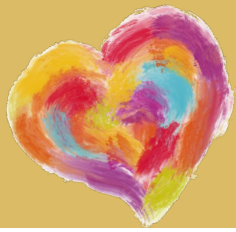


# Recommendation: Board Facilities Committee meet to consider Option #2

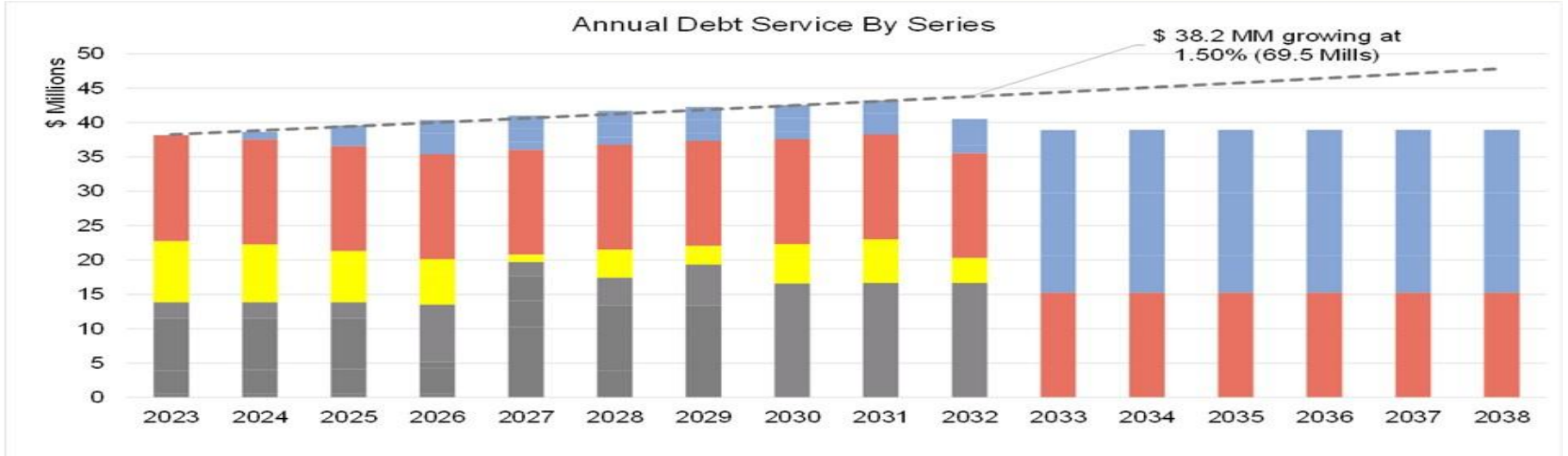


Gray - Previous Debt  
Yellow - Irmo High Debt

Red - Annual Maintenance  
Blue - Bond Referendum

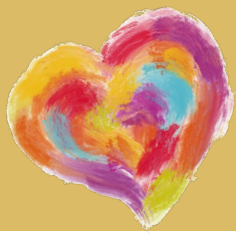


# Recommendation: Board Facilities Committee meet to consider Option #3

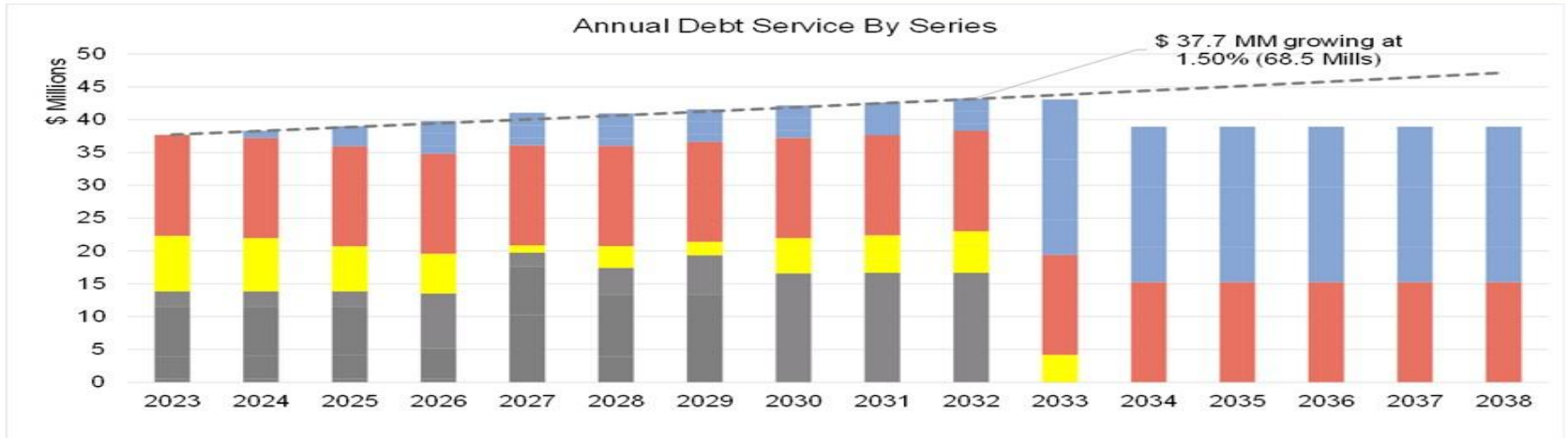


Gray - Previous Debt  
Yellow - Irmo High Debt

Red - Annual Maintenance  
Blue - Bond Referendum



# Recommendation: Board Facilities Committee meet to consider Option #4



Gray - Previous Debt  
Yellow - Irmo High Debt

Red - Annual Maintenance  
Blue - Bond Referendum

## Alternative Education Programs

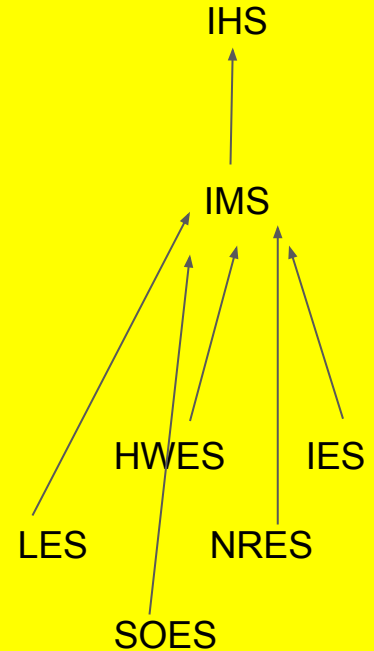
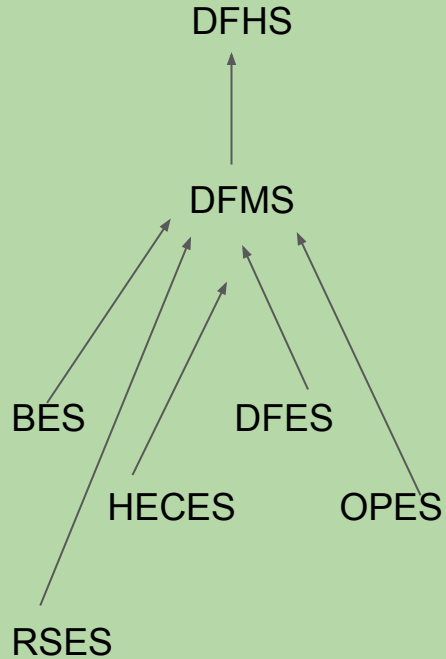
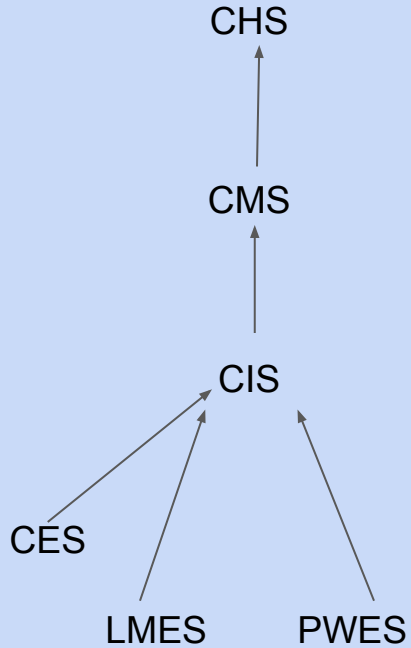
SHHS Academy for Success

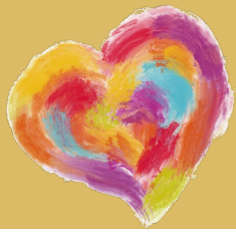
Adult Education

Crossroads Early Childhood Center

The Center for Advanced Technical Studies

Flexible Innovative Virtual Education (FIVE)





## Recommendation: Board Facilities Committee meet to consider the following:

Option 1	Take no action on the remaining poor or fair Rated Facilities	Cost: Unknown
Option 2*	Borrow <b>Above</b> our Millage	\$275 Million** and Increase Taxes Addresses All D5LR Schools
Option 3*	Borrow <b>At</b> our Millage	\$130 Million** and Maintain Tax Rate ( <b>69.5 Mills</b> ) Addresses All D5LR Poor and Fair Facilities
Option 4*	Borrow <b>Below</b> our Millage	\$130 Million**, Lower Taxes, Longer Payoff time and More Interest ( <b>68.5 Mills</b> ) Addresses All D5LR Poor and Fair Facilities

\*OPTIONS 2, 3 and 4 WILL REQUIRE A Bond Referendum

\*\* Amounts are estimates of cost and do not include inflation

