

Profile 2023-2024

**Founded in 1858 by the Sisters of Saint Joseph, Mount Saint Joseph Academy is a college preparatory, independent Catholic school for 9-12th grade female students, located in Montgomery County, just outside of northwest Philadelphia. With a focus on academically rigorous programs, the Mount challenges young women to shape the future while empowering them to realize their fullest potential.**

## **BLOCK SCHEDULING**

The Mount operates on a "block," or intensive, schedule with the school year divided into two semesters. Students take up to 4 credits per semester for a total of up to 8 credits per academic year, during the traditional school day. Additional credits outside of the school day block schedule are available for limited courses. Completion of a minimum of 7 credits per academic year is required for graduation.

## **GRADUATION REQUIREMENTS**

- Theology (4 credits)
- English (4 credits)
- Mathematics (3 credits)
- Science (3 lab science credits)
- Social Studies (3 credits)
- World Language (3 credits, same language)
- Fine Arts (1 credit)
- Physical Education (1 credit)
- Technology (0.75 credit)
- Health Education (.5 credit)

**120 W. WISSAHICKON AVENUE  
FLOURTOWN, PA 19038  
215-233-3177  
WWW.MSJACAD.ORG**

CEEB CODE: 393390

Amy DiGiovanni, Director of Counseling  
215-233-3177 x.306  
adigiovanni@msjacad.org

Lisa Boyle, College Counseling  
Coordinator/College Counselor  
215-233-3177 x.308  
lboyle@msjacad.org

Mary-Kate Kaminski, College Counselor  
215-233-3177 x.210  
mkaminski@msjacad.org

## **DIVERSITY AT THE MOUNT**

The Mount is committed to recruiting a diverse student body from the local greater Philadelphia area. Students attending the Mount come from 68 different local zip codes, 5 counties, and 30 school districts with 13.9% of students self-identifying as students of color. 32% of students receive institutional financial aid in an ongoing effort to support socioeconomic diversity. Deeply committed to our Catholic identity, the Mount openly welcomes and maintains non-Catholic enrollment.

## GRADE EQUIVALENCY CHART

GRADE	QUALITY/ POINT EQUIVALENT	QPE HONORS	QPE APE	NUMERICAL EQUIVALENCY
A	4.0	4.3	4.7	100-94
A-	3.7	4.0	4.3	93-91
B+	3.3	3.7	4.0	90-88
B	3.0	3.3	3.7	87-85
B-	2.7	3.0	3.3	84-82
C+	2.3	2.7	3.0	81-79
C	2.0	2.3	2.7	78-76
C-	1.7	2.0	2.3	75-74
D+	1.3	1.7	2.0	73-72
D	1.0	1.3	1.7	71-70
F	0.0	0.0	0.0	69-

## CURRICULUM OPTIONS

### Advanced Placement Courses

- Offered to students in grades 10-12 when meeting prerequisites
- Juniors and Seniors are limited to a maximum of 4 AP courses per year
- Sophomore schedules typically allow for a maximum of 1 AP course
- AP exams are required for all enrolled AP students

### Honors Courses

- Offered to students in grades 9-12 when meeting prerequisites
- Freshman may enroll in a maximum of 3 honors courses
- Courses offer an in-depth look at and faster-paced approach in specific subjects

### College Preparatory Courses

- Provide students with the skills and knowledge imperative for college success
- All courses not otherwise designated are College Preparatory

## CURRICULUM FEATURES

- Diocesan Scholars Program: Dual enrollment agreement with local Catholic colleges and universities
- Women as Founders Seminar Course: A mission-aligned course with a research project centered around a social issue of personal significance

## GRADE POINT AVERAGE

- The Mount calculates a weighted GPA on a 4.0 scale
- Yearly and cumulative GPAs appear on the transcript below completed coursework
- Courses not calculated into the GPA include 9th and 10th grade 0.25-credit rotation courses, and PE/Health courses

## CLASS RANK

Mount Saint Joseph Academy does not determine or report rank. The Mount maintains a selective admissions process and rigorous college preparatory program, with a high achieving student body. As such, it is our belief that class rank is not an accurate measure of our students' individual achievement or college potential.

*Please note: All listed courses may not run each year based on number of course requests and staffing.*

### Honors Courses:

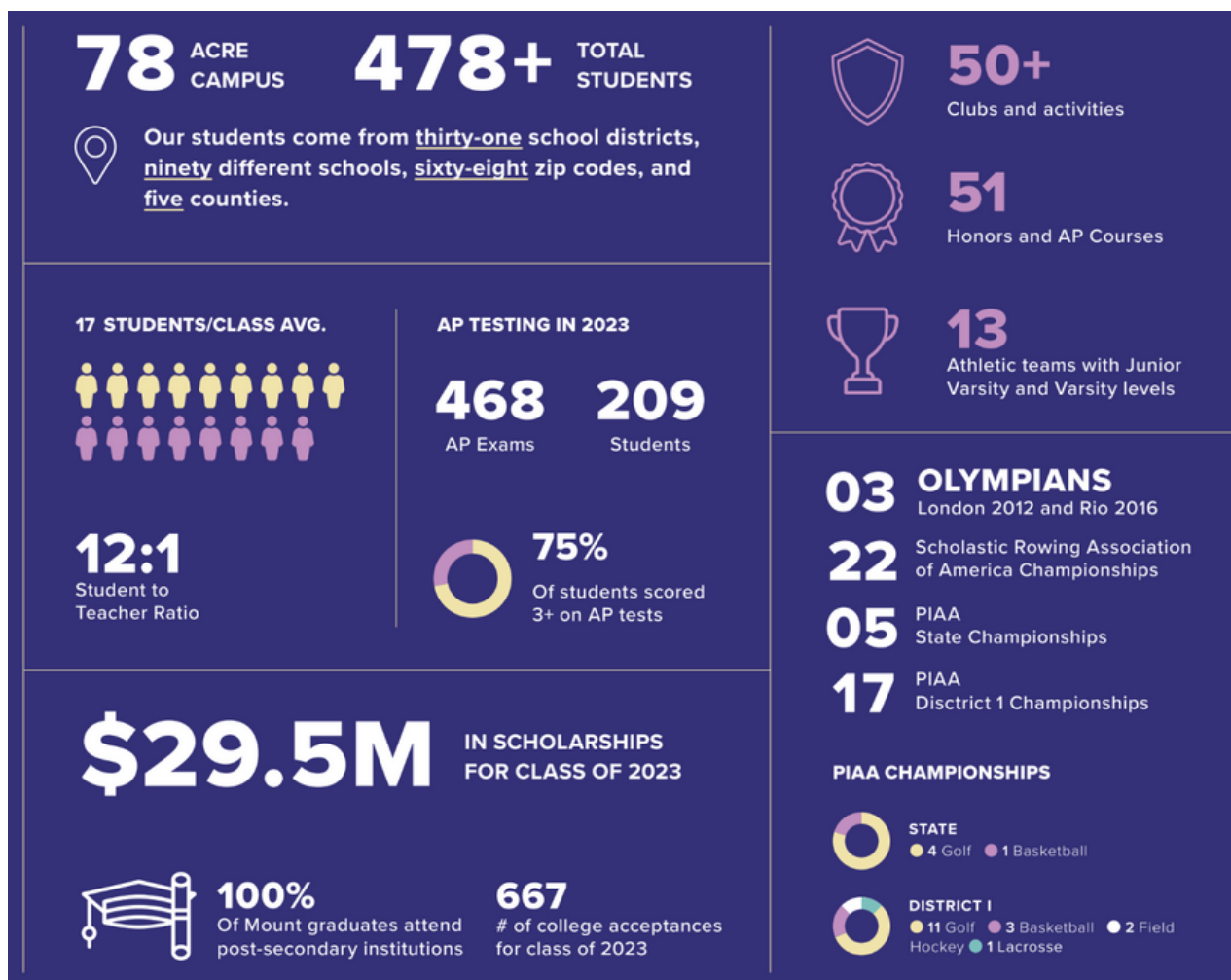
- Algebra I, II
- American Literature
- Anatomy & Physiology
- Biology
- British Literature
- Chemistry I, II
- Concepts of Physics
- Foundations of Western Civilization
- Geometry
- Government, Policy & Economics
- Human Geography
- Independent Art
- Introduction to Java Programming
- Introduction to Writing & Literature
- Language III, IV
- Modern Europe
- Music Theory
- Pre-Calculus
- U.S. History Modern 1
- U.S. History Modern 2
- Women As Founders
- Women's Studies

### AP Courses:

- Art History
- Biology
- Calculus AB
- Calculus BC
- Computer Science A
- Computer Science Principles
- English Literature & Composition
- European History
- French Language
- Latin
- Microeconomics
- Music Theory
- Physics 1: Algebra-Based
- Physics C: Electricity & Magnetism
- Physics C: Mechanics
- Psychology
- Spanish Language
- Statistics
- Studio Art
- U.S. Government & Politics
- U.S. History
- World History: Modern

**FOR A FULL LISTING OF COURSES,  
VISIT OUR CURRICULUM WEBPAGE AT  
[MSJACAD.ORG/CURRICULUM](https://msjacad.org/curriculum)**

## THE MOUNT AT A GLANCE



## COLLEGE OUTCOMES

100% of Mount graduates attend post-secondary institutions, including some of these prestigious colleges and universities:

Amherst College	Smith College
Boston College	Spelman College
Bowdoin College	The College of William and Mary
Brown University	The Massachusetts Institute of Technology
Clemson University	The University of North Carolina at Chapel Hill
Columbia University	Tulane University
Cornell University	United States Naval Academy
Dartmouth College	University of Georgia
Duke University	University of Michigan
Fordham University	University of Notre Dame
Georgetown University	University of Pennsylvania
Georgia Institute of Technology	University of Pittsburgh
Harvard University	University of Southern California
Howard University	University of Virginia
Johns Hopkins University	Villanova University
Lehigh University	Vanderbilt University
New York University	Virginia Tech
Northeastern University	Wake Forest University
Pennsylvania State University	Worcester Polytechnic Institute
Princeton University	Wellesley College

*Mount Saint Joseph Academy is accredited by the Pennsylvania Association of Independent Schools (PAIS) and was previously named a U.S. Department of Education National Blue Ribbon School*