



School Site Committee Visioning Workshop
January 11th, 2023 | 8:30 - 10:00 am

Tanu Kohli, Principal

Russo-McEntee Academy Alum Rock Union School District





Community
Outreach

Next Steps:

LPA team will distribute the results of the Facility Condition Assessments (FCAs) to the school sites after the winter holiday. After that, LPA will incorporate the results of the FCAs and what we heard at this workshop to create the proposed new master plan to present at the Community Town Hall workshop in Mid-March and early April 2023. The week after the Town Hall meetings, we will meet with your Site Council Committee again to review the input with your group to finalize the diagrams before we do the cost estimating.

The Site Council Committee was oriented to understand what a master plan is and what Ed Specs are. Then highlights from the Ed Specs Visioning Workshop were shown, concluding with the draft guiding principle statement on the following page. After that, participants were asked a series of questions to draw out their ideas to improve the learning environments to support the mission and vision of Alum Rock USD.



Learning Shifts Focus on Student Empowerment- DRAFT

ARUSD's learning environments will support students' development of ***mind, body and spirit***. They will be empowered with the opportunity to try different ways of learning to discover how they learn best, ***find their spark*** and to ***keep the curiosity*** they were born with to become ***expert lifelong learners***. ARUSD will work to give students and families who need additional support to have an ***equal chance to thrive***, meeting all their needs.

EMPOWERING STUDENTS TO BECOME EXPERT LEARNERS

- Multi-sensory and multi-intelligences learning
- More control at the hands of the students
- Independent choice and/or collaborative elective periods
- Less teacher-directed time
- Students setting individual goals
- Student-driven activities
- Student-chosen schedules
- More independent work time
- Relaxation rooms
- No school uniforms

HIGHER COLLABORATION

- Team collaboration across studies, play, and extra-curricular activities
- Flexible and collaborative opportunities

EQUITY FOR STUDENTS AND THEIR FAMILIES

- Spaces to support personal and basic needs (i.e. laundry services)
- Full day kindergarten

MIND, BODY AND SPIRIT

- More outside and exploration time
- Play and naturalistic movement
- Bring community into the class
- Indoor and outdoor use spaces

Visioning Questions:

1. In general, what is your **overall impression** of the campus as it exists today? How do you think the community perceives the condition of the existing campus? Is Admin working well as a welcoming space? Restrooms?
2. How well do **traffic patterns** flow on and around the campus (both vehicular and pedestrian)?
3. Do you have any observations or concerns regarding **safety and security**?
4. Are **outdoor areas** currently being utilized for educational purposes?
5. Is there adequate **play area**? If not, what would improve the current conditions?
6. Where does the school **assemble** for school-wide functions, grade-wide functions and smaller group functions?
7. How well do your **current learning spaces** support your instructional delivery? Library/Media Resource Center? Other spaces such as Makerspace? STEM? STEAM Labs? Arts? Science? After-school programs?
8. What are your most **immediate concerns** regarding current facilities?

Participants were asked questions to draw out their ideas to improve the learning environments to support the mission and vision of Alum Rock USD.

1

Overall Impression

In general, what is your **overall impression** of the campus as it exists today? How do you think the community perceives the condition of the existing campus? Is Admin working well as a welcoming space? Restrooms?

- Inequitable classroom sizes across the campus.
- The school has low curb appeal.
- School has not upgraded facility or improved site conditions in years.
- The standard curriculum not applicable to today's workforce.
- Currently there is a too much asphalt on the campus.
- Low connection to the outdoors since rooms lack natural light.
- Community feels the school aesthetics and conditions are unwelcoming. A campus refresh would be beneficial as conditions are misleading to the community.
- HVAC needs maintenance to function properly as the appliance is inconsistent with it's distribution of air flow and can be noisy.

1

Overall Impression

In general, what is your **overall impression** of the campus as it exists today? How do you think the community perceives the condition of the existing campus? Is Admin working well as a welcoming space? Restrooms?

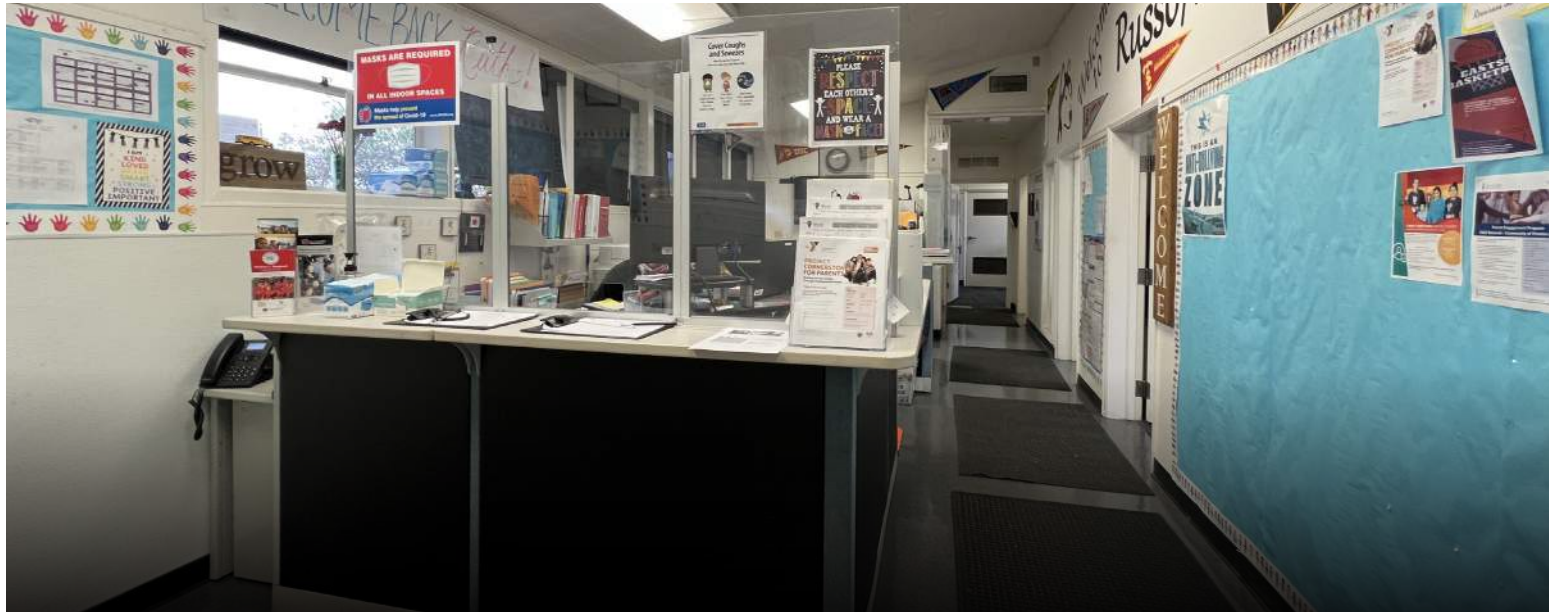
- Classrooms need to refresh window treatments to help control the amount of natural light penetrating the space, privacy and for safety precautions.
- The campus main office is not adequately sized for the daily office functions.
- Front office requires a reconfiguration to help the flow of the space and an overall refresh.
- Campus needs more restrooms based on the overall student body count (400 students). For privacy purposes staff needs an additional restroom.
- Students in the Special Education program kids have no in-classroom restroom or changing stations.



Overall Impression



The dark, uninspiring beige colors don't contribute to a joyful environment.



Overall Impression



The location of the administration building is difficult to locate, and needs to be reconfigured.

2






Traffic Patterns

How well do **traffic patterns** flow on and around the campus (both vehicular and pedestrian)?

- The bus loading lane is along Gay Ave.
- Drop-off occurs at both parking lots, but end of day dismissal occurs only at the Gay Ave gates.
- Due to the lack of adequate parking lots, street congestion is extreme. This issue has caused neighbors to block off street parking with cones; most congested day is Thursday.
- High need for speed bumps at Gay Ave.
- Flashing light crossing indicators could be useful.
- Parents parking along Minidoka Ave block school staff from accessing facility parking lot.
- The site sees a need for additional accessible parking stalls.



Traffic patterns

-  Traffic Congestion
-  Pick-up/Drop-off Loops
-  Speed Bumps Needed
-  Entry
-  Problematic area of vehicular congestion

3

Safety & Security

Do you have any observations or concerns regarding **safety and security**?

- All gates are locked with a chain except for the pedestrian entrance by portable classrooms which has a push bar.
- People jump over or cut holes in the fences over weekends, vacation, and after hours.
- Benches have been stolen or used to jump onto the roof.
- Security cameras are needed in core areas of the campus including: near the cafeteria, playground, faucets, outdoor corridors, back grass area.



Safety & Security



Entry



Taller perimeter fencing is needed.



Security cameras and lighting are needed.



All gates need to be locked during school hours

4

Outdoor Areas

Are **outdoor areas** currently being utilized for educational purposes?

- Courtyards between finger buildings are unused and could be transformed into places for outdoor learning.
- The play field has gopher holes and is unusable.
- Landscape design is needed.
- School benches are often stolen and have not been replaced.
- The community has a vision to develop gardens for students to use for learning, movement and social interaction. (See next pages for current plans in the works).
- This campus lacks trees and shade structures.
- Refresh of exterior and interior finishes would help improve image of school.
- Wayfinding can help students locate their way around school.
- Visible wear on ramps leading to classrooms.
- Puddling of water under exterior seating making it unusable.

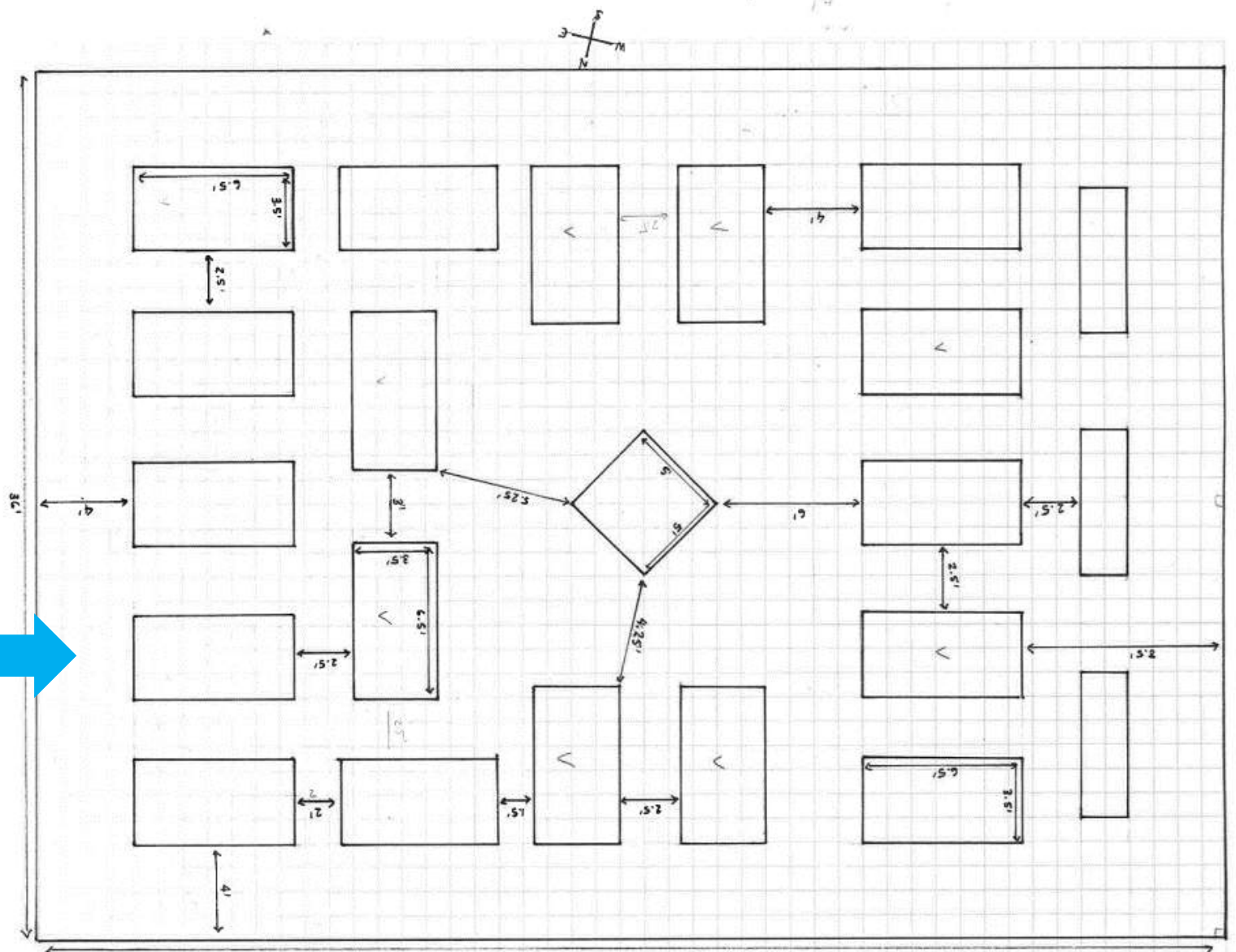
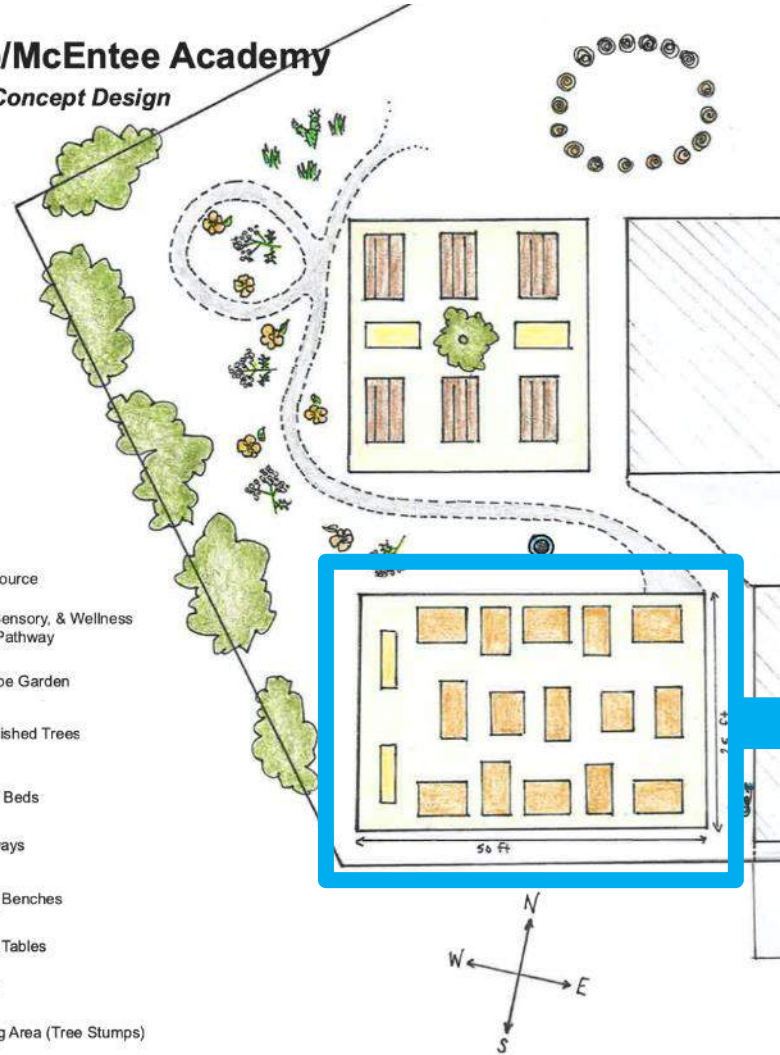
IMPLEMENTATION | RUSSO/MCENTEE ACADEMY, ALUM ROCK USD



**44th Annual Conference
on School Facilities**

February 22-24, 2023 • Sacramento SAFE Credit Union Convention Center

Russo/McEntee Academy
Outdoor Concept Design





Outdoor Areas



Courtyards between finger buildings could be transformed into outdoor learning places if a line of sight is added from the classrooms to it.



Outdoor Areas



The play field is full of gopher holes and unusable.



Outdoor Areas



This campus lacks trees and shade structures.

5

Play Areas

Is there adequate **play area**? If not, what would improve the current conditions?

- Tan bark is not ideal or accessible to students with disabilities.
- During the rainy season there is a lack of space for P.E. to be held indoors.
- Play structures need to be replaced to be appropriate for different ages.

6

Assembly

Where does the school **assemble** for school-wide functions, grade-wide functions and smaller group functions?

- The cafeteria is too small for school-wide assemblies. Students are split into two to three large groups in order to control the lunch hour.
- The cafeteria is equipped with some AV technology but lacks HVAC making it thermally uncomfortable and not useful for events..
- Due to the lack of large assembly spaces, students gather outside for announcements and other school events throughout the year.



Assembly



Due to the lack of large assembly spaces, students gather outside for announcements and other school events throughout the year

7

Current Learning Spaces

How well do your **current learning spaces** support your instructional delivery? Library/ Media Resource Center? Other spaces such as Makerspace? STEM? STEAM Labs? Arts? Science? After school programs?

- The campus library is used for storage.
- Attempting to convert the library into a space for parent meetings, professional development, and conference rooms.
- Classrooms are too small for on the number of students per class (+30 students).
- There is not enough storage space in classrooms and throughout the campus.
- This campus has a lack of space for calming corners which are needed in every classroom.
- School curriculum vision focuses on Environmental Justice and Sustainability.
- Science classroom is organized and functional.
- Classroom wings need to be organized by grade level.
- Sound transfer between classrooms creates distractions.
- Roof leaks in some classrooms.
- Classroom spaces are cluttered.



Current Learning Environments



The school library is underutilized and can be used as a multifunctional space to hold different types of gatherings .



Current Learning Environments



The current classroom spaces are too small.

9

Immediate Concerns

What are your most **immediate concerns** regarding current facilities?

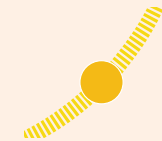
- New play structures are needed for different age groups.
- Add more security cameras.
- New fencing to help secure campus.
- A single controlled point of entry is needed.
- Separate entrance for Kidango.
- Traffic congestion caused by drop-off and pick-up.
- Additional accessible parking stalls are needed.
- Add shade structures to protect from the elements and make thermally comfortable outdoor areas.
- Adequate restrooms counts based on enrollment needed.
- Puddling of water under exterior seating, making it unusable.

Outside-In and Inside Out

The following pages organize the questions that were asked at the visioning workshops into two categories: Outside In and Inside Out. Outside In items capture needs outside of the buildings. Inside Out items capture needs for the buildings and the interiors. Items are listed from macro level (larger needs) to micro level (details).



Outside In



Sun Path



Entry



Drop off and pick up loops need improvement.



Make Admin the controlled single point of entry.



Add shade structures.



A separate entrance for Kidango is needed.



Outside In



Sun Path



Entry



Areas between finger buildings are underutilized.



New seating for outdoor learning and social interaction is needed instead of metal tables.



Play areas need to be ADA accessible and sized appropriately.



Inside Out



Entry



Transform and expand Admin into a Welcoming Entry with higher security.



A larger cafeteria is needed for school-wide assemblies.



Transform the library into a multi-purpose shared resource.



Classrooms are too small for a load of over 30 students.



Inside Out



Entry



Classroom spaces are cluttered.



Sound transfer between classrooms creates distractions.



Classrooms need to refresh window treatments for lighting, privacy, and safety precautions.

Vision

The facility master plan for this campus will focus on the bullet point list of priorities synthesized from the workshop.

At the Town Hall Workshops, we will share highlights from the Ed Specs, this report deliverable and a proposed new site diagram. Town Hall participants will be engaged in an exercise in which they choose the top five priorities and add their comments to the boards.

- Provide students in SPED programs with in-classroom restrooms or changing stations.
- Add more storage space.
- Provide a gym.
- Add wayfinding.
- Implement calming corners within classrooms.
- Provide a space to accommodate school-wide assemblies.
- Transform the library into a multi-purpose shared resource center.
- Refresh window treatments for lighting, privacy, and safety precautions in classrooms.
- Transform and expand Admin into a Welcoming Entry with higher security.
- Properly soundproof classrooms.
- Design classrooms with enough storage and functionality.
- Provide new fencing with a single point of entry.
- Improve drop off and pick up loops.
- Add trees and shade structures to protect from the elements.
- Use areas between classroom finger buildings for outdoor learning with direct visual connections.
- New seating for outdoor learning and social interaction is needed.
- Design play areas to be ADA accessible and sized appropriately.