



School Site Committee Visioning Workshop  
December 6th, 2022 | 1:30 - 3:00pm

Yeny Rosales, Principal

## Ryan STEAM Academy Alum Rock Union School District





Community  
Outreach

## Next Steps:

LPA team will distribute the results of the Facility Condition Assessments (FCAs) to the school sites after the winter holiday. After that, LPA will incorporate the results of the FCAs and what we heard at this workshop to create the proposed new master plan to present at the Community Town Hall workshop in Mid-March and early April 2023. The week after the Town Hall meetings, we will meet with your Site Council Committee again to review the input with your group to finalize the diagrams before we do the cost estimating.

*The Site Council Committee was oriented to understand what a master plan is and what Ed Specs are. Then highlights from the Ed Specs Visioning Workshop were shown, concluding with the draft guiding principle statement on the following page. After that, participants were asked a series of questions to draw out their ideas to improve the learning environments to support the mission and vision of Alum Rock USD.*



# Learning Shifts Focus on Student Empowerment- DRAFT

ARUSD's learning environments will support students' development of ***mind, body and spirit***. They will be empowered with the opportunity to try different ways of learning to discover how they learn best, ***find their spark*** and to ***keep the curiosity*** they were born with to become ***expert lifelong learners***. ARUSD will work to give students and families who need additional support to have an ***equal chance to thrive***, meeting all their needs.

## EMPOWERING STUDENTS TO BECOME EXPERT LEARNERS

- Multi-sensory and multi-intelligences learning
- More control at the hands of the students
- Independent choice and/or collaborative elective periods
- Less teacher-directed time
- Students setting individual goals
- Student-driven activities
- Student-chosen schedules
- More independent work time
- Relaxation rooms
- No school uniforms

## HIGHER COLLABORATION

- Team collaboration across studies, play, and extra-curricular activities
- Flexible and collaborative opportunities

## EQUITY FOR STUDENTS AND THEIR FAMILIES

- Spaces to support personal and basic needs (i.e. laundry services)
- Full day kindergarten

## MIND, BODY AND SPIRIT

- More outside and exploration time
- Play and naturalistic movement
- Bring community into the class
- Indoor and outdoor use spaces

# Visioning Questions:

1. In general, what is your **overall impression** of the campus as it exists today? How do you think the community perceives the condition of the existing campus? Is Admin working well as a welcoming space? Restrooms?
2. How well do **traffic patterns** flow on and around the campus (both vehicular and pedestrian)?
3. Do you have any observations or concerns regarding **safety and security**?
4. Are **outdoor areas** currently being utilized for educational purposes?
5. Is there adequate **play area**? If not, what would improve the current conditions?
6. Where does the school **assemble** for school-wide functions, grade-wide functions and smaller group functions?
7. How well do your **current learning spaces** support your instructional delivery? Library/Media Resource Center? Other spaces such as Makerspace? STEM? STEAM Labs? Arts? Science? After-school programs?
8. What are your most **immediate concerns** regarding current facilities?

*Participants were asked questions to draw out their ideas to improve the learning environments to support the mission and vision of Alum Rock USD.*



# 1

## Overall Impression

In general, what is your **overall impression** of the campus as it exists today? How do you think the community perceives the condition of the existing campus? Is Admin working well as a welcoming space? Restrooms?

- The campus is outdated and needs renovations but has been well maintained.
- The overall curb appeal of the campus needs improvement.
- The community agrees with the values and modifications the school board is proposing.
- The community has high trust the district can achieve the proposed changes to improve the campus and academic outcomes.
- We compete against charter schools for student enrollment. Some leave the district to move to other areas that are more affordable, some move to charter schools.
- Staff is working diligently to provide students with the best resources.
- The campus lacks a Parent Resource Center on campus.
- The Family Resource Center hubs are being underutilized and should be re-imagined to be used in a more functional way.

# 2








## Traffic Patterns

How well do **traffic patterns** flow on and around the campus (both vehicular and pedestrian)?

- The campus has frontage off a busy street.
- This campus has a low percentage of pedestrians commuting to school.
- Currently there are multiple entry points to the campus. A single point of entry after classes begin is needed.
- During student drop off there is high congestion.
- During the week there are two school buses in the AM and PM.
- Students are dropped off or released starting at 7:30 AM to stagger the schedules reducing traffic.
- There is a lack of staff parking. Removing portable classrooms P1 + P2 will create space for new parking spaces.



# Traffic patterns

-  Traffic Congestion
-  Pick-up/Drop-off Loops
-  Future Cross Walks
-  Entry
-  SDC bus drop-off.
-  Rolling stop sign.
-  SDC bus drop-off.

# 3

## Safety & Security

Do you have any observations or concerns regarding **safety and security**?

- A dedicated pedestrian path to access school grounds is needed. They currently access campus grounds through the school main entry.
- A controlled single point of entry is needed.
- This campus needs controlled gate access.
- Higher fences above 4' are needed around parking areas to secure the campus.
- Entry points lack visual sight lines for site supervision.
- One third of the students stay for after school daycare and programs. Lighting needed for winter months pick up.





# Safety & Security



Entry



Low gate



Gate, but needs to be locked during school hours.



Higher fencing needed.





## Safety & Security



*Taller fences are needed.*





## Safety & Security



*Entry points lack visual sight lines for site supervision.*

# 4

## Outdoor Areas

Are **outdoor areas** currently being utilized for educational purposes?

- Play structures lack protection from the elements.
- There is no space for outdoor use in rainy weather and very minimal indoor space for play.
- Need a direct connection for sight line to potential outdoor areas adjacent to classrooms
- Renovate landscape outside rooms 2, 3, and 4.
- A few outdoor areas are under-supported and can be utilized more functionally to encourage student learning and growth (area near Rm 9).
- The campus garden space is maintained and developed by volunteers.
- More trees are needed on the campus.





## Outdoor Areas



*Areas that could be used for outdoor learning with proper infrastructure.*





## Outdoor Areas



*The area around the community garden is underutilized.*

# 5

## Play Areas

Is there adequate **play area**? If not, what would improve the current conditions?

- The asphalt surrounding the larger playground needs maintenance.
- The playfield has uneven surfaces from gopher holes.
- Students are not interested in using the baseball diamond.
- Play areas lack shade.
- More play space is needed.
- Play equipment is primarily used by Transitional Kindergarten through Third Grade.





## Play Areas



*Play areas lack shade.*





## Play Areas



*Students are uninterested in using the baseball diamond.*

# 6

## Assembly

Where does the school **assemble** for school-wide functions, grade-wide functions and smaller group functions?

- There is no all-school gathering space, so students gather outside for announcements and other events.
- Additional shaded areas are needed to protect from the elements and to be thermally comfortable.
- Multiple activities occur on campus which include: Trunk-or-treating, STEAM projects, book give away, etc.
- The Stage is shared with non-profit programs and is under-utilized

# 7

## Current Learning Spaces

How well do your **current learning spaces** support your instructional delivery? Library/ Media Resource Center? Other spaces such as Makerspace? STEM? STEAM Labs? Arts? Science? After school programs?

- An additional MPR needed for activities such as music and PM programs.
- The library had been decentralized to mobile book carts. There is a need for a dedicated library space that can be utilized as a multifunctional room. This room can host activities such as: counseling, R.A.F.T., or after school programs.
- There is no science lab. Need (2) Science/STEAM labs.
- Conference rooms needed for meetings.
- Renovating rooms 16-22 can create more space for program activities and school electives to occur. The media and learning center should be located adjacent and centralized within the campus.
- Room 3 is being used as a Makerspace.
- Classrooms rooms have moved away from the traditional “front of the room”.
- An interior refresh of finishes and equipment is needed.
- Due to the lack of shared collaboration space, collaboration occurs only in classrooms.
- Learning spaces lack flexible furniture and learning equipment.





## Current Learning Environments



*Learning spaces lack flexible furniture and learning equipment.*





## Current Learning Environments



*There is a need for a dedicated library space that can be utilized as a multifunctional room.*

# 9

## Immediate Concerns

What are your most **immediate concerns** regarding current facilities?

- Define a single controlled point of entry for the front office.
- HVAC improvements campus-wide needed.
- An outdoor assembly space is needed for all-school gatherings.
- Need (2) Science/STEAM labs.
- Repaving of blacktop is needed.
- Room programming needs to be re-shuffled to better organize the campus and re-purpose underutilized spaces.
- Incorporating more outdoor learning spaces that with sight lines for supervision.
- Refresh of interior finishes and furniture.

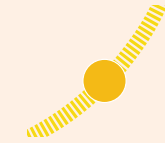
# Outside-In and Inside Out

*The following pages organize the questions that were asked at the visioning workshops into two categories: Outside In and Inside Out. Outside In items capture needs outside of the buildings. Inside Out items capture needs for the buildings and the interiors. Items are listed from macro level (larger needs) to micro level (details).*





## Outside In



Sun Path



Entry



The overall curb appeal of the campus needs improvement.



Taller perimeter fences are needed.



A single point of entry is needed.



During student drop off there is high traffic congestion.



During the week there are two school buses in the AM and PM.

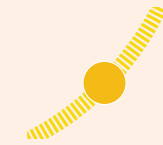


There is a lack of staff parking.





# Outside In



Sun Path



Entry



An outdoor assembly space is needed for all-school gatherings.



Outdoor play and hang out areas lack protection from the elements.



More trees are needed on the campus for shade.



More play space is needed.



The campus garden space is maintained and developed by volunteers.



Renovate landscape outside rooms 2, 3, 4, and 9, for purposeful outdoor learning.





## Inside Out



Entry



Admin needs to be re-designed to be a Welcome Center with a single, secure point of entry that is easily locatable and welcoming to visitors.



The campus needs a Parent Resource Center.



More conference rooms are needed for meetings.



An additional MPR needed for activities such as music and PM programs.



There is a need for a dedicated Media Resource Center/Learning Center multi-purpose area that is centralized within campus.





# Inside Out



Entry



There is a need for (2) dedicated Science/STEAM labs.



There is a need for a shared collaboration space.



Classrooms need visual connections to the outdoors for outdoor learning activities.



Room programming needs to be re-shuffled so the campus can re-purpose underutilized spaces, i.e. rooms 16-22.

# Vision

*The facility master plan for this campus will focus on the bullet point list of priorities synthesized from the workshop.*

*At the Town Hall Workshops, we will share highlights from the Ed Specs, this report deliverable and a proposed new site diagram. Town Hall participants will be engaged in an exercise in which they choose the top five priorities and add their comments to the boards.*

- Improve campus security on the perimeter.
- Improve sight lines for supervision.
- Improve parking and drop-off/pick-up.
- Transform and expand Administration into a Welcoming Entry with higher security.
- Add conference rooms to the Welcome Center.
- Optimize the outdoors to create purposeful outdoor learning spaces and to support physical and mental wellness.
- Add an additional MPR to accommodate music and PM activities.
- Locate a new Media Resource Center (library) and a Learning Center adjacent to each other and centralized.
- Add (2) Science/STEAM labs.
- 10. Provide more shared collaboration spaces and spaces for electives.
- Add an outdoor assembly space for all-school gatherings.
- Add both trees and shade structures to protect outdoor areas from the elements.
- Increase the amount of play space and improve existing play areas.
- Maintain the campus garden.
- Flexible refresh of interior finishes, furniture, and equipment is needed.