



School Site Committee Visioning Workshop  
 December 15th, 2022 | 10:30 - 12:00pm  
 Kasturi Basu - Principal

## Lyndale Elementary Alum Rock Union School District





Community  
Outreach

## Next Steps:

LPA team will distribute the results of the Facility Condition Assessments (FCAs) to the school sites after the winter holiday. After that, LPA will incorporate the results of the FCAs and what we heard at this workshop to create the proposed new master plan to present at the Community Town Hall workshop in Mid-March and early April 2023. The week after the Town Hall meetings, we will meet with your Site Council Committee again to review the input with your group to finalize the diagrams before we do the cost estimating.

*The Site Council Committee was oriented to understand what a master plan is and what Ed Specs are. Then highlights from the Ed Specs Visioning Workshop were shown, concluding with the draft guiding principle statement on the following page. After that, participants were asked a series of questions to draw out their ideas to improve the learning environments to support the mission and vision of Alum Rock USD.*



# Learning Shifts Focus on Student Empowerment- DRAFT

ARUSD's learning environments will support students' development of *mind, body and spirit*. They will be empowered with the opportunity to try different ways of learning to discover how they learn best, *find their spark* and to *keep the curiosity* they were born with to become *expert lifelong learners*. ARUSD will work to give students and families who need additional support to have an *equal chance to thrive*, meeting all their needs.

## EMPOWERING STUDENTS TO BECOME EXPERT LEARNERS

- Multi-sensory and multi-intelligences learning
- More control at the hands of the students
- Independent choice and/or collaborative elective periods
- Less teacher-directed time
- Students setting individual goals
- Student-driven activities
- Student-chosen schedules
- More independent work time
- Relaxation rooms
- No school uniforms

## HIGHER COLLABORATION

- Team collaboration across studies, play, and extra-curricular activities
- Flexible and collaborative opportunities

## EQUITY FOR STUDENTS AND THEIR FAMILIES

- Spaces to support personal and basic needs (i.e. laundry services)
- Full day kindergarten

## MIND, BODY AND SPIRIT

- More outside and exploration time
- Play and naturalistic movement
- Bring community into the class
- Indoor and outdoor use spaces

# Visioning Questions:

1. In general, what is your **overall impression** of the campus as it exists today? How do you think the community perceives the condition of the existing campus? Is Admin working well as a welcoming space? Restrooms?
2. How well do **traffic patterns** flow on and around the campus (both vehicular and pedestrian)?
3. Do you have any observations or concerns regarding **safety and security**?
4. Are **outdoor areas** currently being utilized for educational purposes?
5. Is there adequate **play area**? If not, what would improve the current conditions?
6. Where does the school **assemble** for school-wide functions, grade-wide functions and smaller group functions?
7. How well do your **current learning spaces** support your instructional delivery? Library/Media Resource Center? Other spaces such as Makerspace? STEM? STEAM Labs? Arts? Science? After-school programs?
8. What are your most **immediate concerns** regarding current facilities?

*Participants were asked questions to draw out their ideas to improve the learning environments to support the mission and vision of Alum Rock USD.*



# 1

## Overall Impression

In general, what is your **overall impression** of the campus as it exists today? How do you think the community perceives the condition of the existing campus? Is Admin working well as a welcoming space? Restrooms?

- Lyndale Elementary has experienced an increase in enrollment.
- The custodial team supports the school well and everyone does the best they can to maintain it.
- This campus is very old and in need of upgrades. Site wide plumbing requires regular maintenance, roofs are leaking, blacktops need resurfacing.

# 2




## Traffic Patterns

How well do **traffic patterns** flow on and around the campus (both vehicular and pedestrian)?

- More parking is needed. Drivers park in the drop-off lane or red zones because of the lack of parking.
- There is no dedicated cross guard to direct crossing and traffic flow.
- There are 4 to 5 buses for SPED students, but not enough bus parking.



# Traffic patterns

-  Traffic Congestion
-  Pick-up/Drop-off Loops
-  Speed Bumps Needed



**01** Drivers park in the drop-off lane or red zones because of the lack of parking

**02** No cross guard at intersection

**03** There are 4 to 5 buses for SPED students, but not enough bus parking.

# 3

## Safety & Security

Do you have any observations or concerns regarding **safety and security**?

- The numerous gates have been difficult to manage because there are several points of entry and not enough supervision.
- The perimeter fence is malleable and prone vandalism and tagging outside of school hours.
- The Admin area is small, uninviting, and hard to find. During the pandemic, parents had to wait outside the office to meet the 6-foot distance recommendation.
- There are only two cameras found on this campus and more visual supervision is needed.
- More lighting is needed for the safety of the custodial staff who work when it is dark.





# Safety & Security



Entry



Difficulty managing many gate entries.



Admin are is too small and difficult to navigate.



The perimeter fence is malleable and prone to vandalism and tagging outside of school hours.



More security cameras and site lighting is needed





## Safety & Security



*The Administration area has cramped circulation and a small waiting area.*

# 4

## Outdoor Areas

Are **outdoor areas** currently being utilized for educational purposes?

- The campus is very large with many areas of underutilized space.
- The hardcourts need resurfacing.
- The playfield, near the TK and Pre-K building, is not well maintained.
- Part of the hardcourt area near the playground floods during rainy days.
- More outdoor shading is needed for dining near the MPR.
- The open areas between classroom finger buildings have a few planter boxes and potential for outdoor learning opportunities.
- There is a dedicated outdoor garden, but it has not been maintained.





## Outdoor Areas



*There are plenty of underutilized spaces that have potential to be used for outdoor play and learning.*





## Outdoor Areas



*The play field near the west side of the campus is uneven and blocked off for safety concerns.*





## Outdoor Areas



*The open areas between classroom finger buildings have a few planter boxes and potential for outdoor learning opportunities.*





## Outdoor Areas



*The campus has an outdoor garden that is not properly maintained.*

# 5

## Play Areas

Is there adequate **play area**? If not, what would improve the current conditions?

- There have been some upgrades to hardcourts such as its basketball courts, tetherball areas, etc.
- The TK/ Preschool needs their sandbox renovated and a dedicated playground.
- Lyndale ES students have an immense passion for soccer and would like to have more features that reflect their interests.



# 6

## Assembly

Where does the school **assemble** for school-wide functions, grade-wide functions and smaller group functions?

- There is no indoor space for all school gatherings, so they are broken into multiple smaller gatherings.
- Events hosted at Lyndale Elementary:
  - Math night
  - Science night
  - VAPA showcase (Mid and End of the year)
  - Award assemblies
  - Parent coffee days
- The cafeteria is the current indoor gathering space.
- The stage is normally used as storage but is also small.
- When hosting outdoor events, technology infrastructure is lacking.
- The school band performs regularly, but lack of space is always a constraint.



## Assembly



*The Cafeteria and Stage are not big enough for large groups.*

# 7

## Current Learning Spaces

How well do your **current learning spaces** support your instructional delivery? Library/ Media Resource Center? Other spaces such as Makerspace? STEM? STEAM Labs? Arts? Science? After school programs?

- Media resource center is needed to support multiple forms of learning.
- A dedicated space for counseling and community resources is needed.
- All classrooms need updates to their HVAC systems.
- The classrooms are too small for number of students and do not support multiple learning modalities
- Larger classrooms with lightweight flexible furniture are needed.
- A dedicated space for extracurricular classrooms are needed.
- Special Education classrooms have their own dedicated space, but need upgrades.
- The TK and Pre-K classrooms do not have any running warm water.
- The TK and Pre-K classrooms are small for the number of students.
- Teachers want to be able to display students work to make the learning explicit and instill a sense of pride in students.
- Their campus vision is to provide extracurricular courses like dance and drama.





## Current Learning Environments



*The furniture is outdated and needs to be replaced with lightweight mobile furniture for flexibility for 21st C, learning.*



# 8

## Immediate Concerns

What are your most **immediate concerns** regarding current facilities?

- Secure entry points so there is only one controlled point of entry after classes start.
- Replace and upgrade perimeter fencing.
- Provide more cameras for better supervision.
- Sitewide plumbing requires regular maintenance and needs to be upgraded (including warm water to learning environments for handwashing)
- Roofs need repairs.
- Blacktops need resurfacing.
- Expand the Administration area and make it more welcoming.
- Lighting is needed for the safety of the custodial staff who work when it is dark.
- Update playgrounds

# 8

## Immediate Concerns

What are your most **immediate concerns** regarding current facilities?

- Provide resource centers for both students and parents.
- Provide a space with technology infrastructure for outdoor large gatherings for students and community.
- The TK/ Preschool needs the sandbox renovated and a dedicated playground.

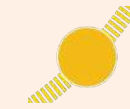


# Outside-In and Inside Out

*The following pages organize the questions that were asked at the visioning workshops into two categories: Outside In and Inside Out. Outside In items capture needs outside of the buildings. Inside Out items capture needs for the buildings and the interiors. Items are listed from macro level (larger needs) to micro level (details).*



# Outside In



Sun Path



Entry



The campus is very large with many areas of underutilized space.



Parents park in the drop-off lane or red zones because of the lack of parking.



There are 4 to 5 buses for SPED students only, but not enough bus parking.

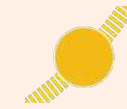


There is potential for outdoor learning spaces in open areas between classroom buildings.





# Outside In



Sun Path



Entry



Playfield areas are affected by gopher holes and need to be renovated.



Hardcourts need resurfacing.



The outdoor garden is an additional resource for teachers and students to use



Part of the hardcourt area near the playground floods during rainy days.





## Inside Out



Entry



The Admin is very small, uninviting, and hard to find.



The Cafeteria/MPR with a stage needs to be enlarged or replaced with new construction or add a Flex Gym for school-wide assemblies and events.



The library has potential to be transformed into a media resource center.



Special Education classrooms have their own dedicated space and need upgrades.



# Vision

*The facility master plan for this campus will focus on the bullet point list of priorities synthesized from the workshop.*

*At the Town Hall Workshops, we will share highlights from the Ed Specs, this report deliverable and a proposed new site diagram. Town Hall participants will be engaged in an exercise in which they choose the top five priorities and add their comments to the boards.*

This site has been classified as a Tier 3 campus. Based on this classification, the vision for this campus includes:

- Modernization of existing buildings.
- Repairs and replacements of building systems and finishes as identified in the Facility Condition Assessment reports.
- Room uses organized for optimal adjacencies.