



School Site Committee Visioning Workshop
December 7th, 2022 | 1:00 - 2:30pm
Rigoberto Gomez- Principal

Linda Vista Elementary School Alum Rock Union School District





Community
Outreach

Next Steps:

LPA team will distribute the results of the Facility Condition Assessments (FCAs) to the school sites after the winter holiday. After that, LPA will incorporate the results of the FCAs and what we heard at this workshop to create the proposed new master plan to present at the Community Town Hall workshop in Mid-March and early April 2023. The week after the Town Hall meetings, we will meet with your Site Council Committee again to review the input with your group to finalize the diagrams before we do the cost estimating.

The Site Council Committee was oriented to understand what a master plan is and what Ed Specs are. Then highlights from the Ed Specs Visioning Workshop were shown, concluding with the draft guiding principle statement on the following page. After that, participants were asked a series of questions to draw out their ideas to improve the learning environments to support the mission and vision of Alum Rock USD.



Learning Shifts Focus on Student Empowerment- DRAFT

ARUSD's learning environments will support students' development of ***mind, body and spirit***. They will be empowered with the opportunity to try different ways of learning to discover how they learn best, ***find their spark*** and to ***keep the curiosity*** they were born with to become ***expert lifelong learners***. ARUSD will work to give students and families who need additional support to have an ***equal chance to thrive***, meeting all their needs.

EMPOWERING STUDENTS TO BECOME EXPERT LEARNERS

- Multi-sensory and multi-intelligences learning
- More control at the hands of the students
- Independent choice and/or collaborative elective periods
- Less teacher-directed time
- Students setting individual goals
- Student-driven activities
- Student-chosen schedules
- More independent work time
- Relaxation rooms
- No school uniforms

HIGHER COLLABORATION

- Team collaboration across studies, play, and extra-curricular activities
- Flexible and collaborative opportunities

EQUITY FOR STUDENTS AND THEIR FAMILIES

- Spaces to support personal and basic needs (i.e. laundry services)
- Full day kindergarten

MIND, BODY AND SPIRIT

- More outside and exploration time
- Play and naturalistic movement
- Bring community into the class
- Indoor and outdoor use spaces

Visioning Questions:

1. In general, what is your **overall impression** of the campus as it exists today? How do you think the community perceives the condition of the existing campus? Is Admin working well as a welcoming space? Restrooms?
2. How well do **traffic patterns** flow on and around the campus (both vehicular and pedestrian)?
3. Do you have any observations or concerns regarding **safety and security**?
4. Are **outdoor areas** currently being utilized for educational purposes?
5. Is there adequate **play area**? If not, what would improve the current conditions?
6. Where does the school **assemble** for school-wide functions, grade-wide functions and smaller group functions?
7. How well do your **current learning spaces** support your instructional delivery? Library/Media Resource Center? Other spaces such as Makerspace? STEM? STEAM Labs? Arts? Science? After-school programs?
8. What are your most **immediate concerns** regarding current facilities?

Participants were asked questions to draw out their ideas to improve the learning environments to support the mission and vision of Alum Rock USD.

1

Overall Impression

In general, what is your **overall impression** of the campus as it exists today? How do you think the community perceives the condition of the existing campus? Is Admin working well as a welcoming space? Restrooms?

- There is a strong and positive relationship with the surrounding community that spans generations.
- The Parent Teacher Association (PTA) is very engaged with school events and needs.
- The school is aesthetically appealing with fresh finishes and murals, but the facilities are outdated and don't function optimally.
- The Admin is not welcoming with a cramped waiting area for visitors.
- The Admin is lacking of space for core functions like counselors and the Community Liaison offices.
- The staff restrooms are spread out across the campus and thus difficult for teachers to use on their short breaks.
- Student restrooms are adequate.



Overall Impression



The administration building is easily accessible and the school has good curb appeal.

2




Traffic Patterns

How well do **traffic patterns** flow on and around the campus (both vehicular and pedestrian)?

- The drop-off lane is used for cars and the two buses for SPED, which leads to heavy congestion.
- Drop-off is staggered with TK/K starting at 8:00 and Grades 1-5 at 8:20 to relieve congestion.
- An adequate amount of staff parking is provided.
- There is not enough visitor parking or after-school program parking.



Traffic patterns

-  Traffic Congestion
-  Pick-up/Drop-off Loops
-  Speed Bumps Needed



Entry

01

The drop-off lane is used for cars and the two buses for SPED, which leads to heavy congestion.

02

There is not enough visitor parking or after-school program parking.

3

Safety & Security

Do you have any observations or concerns regarding **safety and security**?

- Fencing and gate heights are inconsistent throughout.
- More cameras are needed at the parking lots.
- Lighting is needed for after-school programming especially in the side parking lot and Kidango areas.



Safety & Security



Entry



Fencing and gate heights are inconsistent throughout.



Safety & Security



Fencing runs at inconsistent heights.

4

Outdoor Areas

Are **outdoor areas** currently being utilized for educational purposes?

- A covered waiting area is needed at the main entrance as shelter during drop-off and pick-up.
- Trees and shade structures are needed for play, dining, and the potential for purposeful outdoor learning.
- The outdoor areas between classroom wings are under-utilized and aren't engaging.
- The black top lacks seating elements.
- The field is for school-use only.
- A small portion of the field is used for soccer.
- Much of the field is under-utilized due to supervision difficulties or high slopes.



Outdoor Areas



Outdoor furniture for mealtimes and gatherings are needed.



Outdoor Areas



High slopes affect circulation paths.



Outdoor Areas



Areas between classroom wings need gardens, trees for shade, furniture, sinks, power and a water source to support outdoor learning.

5

Play Area

Where does the school **assemble** for school-wide functions, grade-wide functions and smaller group functions?

- Recess is staggered into three groups: 1st grade, 2nd and 3rd grades, 4th and 5th grades.
- TK/K students use the Kidango play structure at the back of campus, which is far from their classrooms.
- There is very little shade at the play areas.
- A small portion of the field is used for soccer.



Play Areas



Hardcourts need to be updated and outdoor furniture needs to be provided.



Play Areas



Only a small portion of the field is used for soccer, the rest is underutilized and needs maintenance.



Play Areas



The TK/Kinder play area is too far from the classrooms.

6

Assembly

Where does the school **assemble** for school-wide functions, grade-wide functions and smaller group functions?

- The MPR is not large enough to support large events or school-wide assemblies.
- School wide assemblies take place in the courtyard, as weather allows.
- Professional development takes place in the teacher work room at the portables.



Assembly



The cafeteria is not large enough to support school-wide gatherings.

7

Current Learning Spaces

How well do your **current learning spaces** support your instructional delivery? Library/ Media Resource Center? Other spaces such as Makerspace? STEM? STEAM Labs? Arts? Science? After school programs?

- This is the largest elementary student population in the district and is one of the few Visual and Performing Arts (VAPA) schools. Every classroom is full.
- VAPA and Makerspaces are lacking.
- Student support, music, and after school programs are housed within portable classrooms.
- The furniture does not support flexibility.
- More storage is needed in classrooms, especially in Special Education classrooms for equipment.
- TK and Kinder don't have restrooms in their classrooms.
- The Library is used for storage and Occupational Therapy meetings.
- The Principal's goal is to transform the Library into a collaborative workspace and reading room.



Current Learning Environments



Portables need to be replaced and classroom furniture needs to be updated.



Current Learning Environments



More storage is needed in classrooms, especially Special Education rooms.



Current Learning Environments



The Library is used for storage and Occupational Therapy meetings. The Library can be transformed into a collaborative workspace and reading room.

8

Immediate Concerns

What are your most **immediate concerns** regarding current facilities?

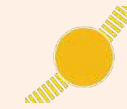
- Large space for assemblies, events, and performances.
- VAPA and Makerspaces.
- Improve outdoor spaces for learning, play, and dining.
- A track at the field.
- Restrooms for TK/K students.
- Updated fencing and more security cameras.

Outside-In and Inside Out

The following pages organize the questions that were asked at the visioning workshops into two categories: Outside In and Inside Out. Outside In items capture needs outside of the buildings. Inside Out items capture needs for the buildings and the interiors. Items are listed from macro level (larger needs) to micro level (details).



Outside In



Sun Path



Entry



Heavy congestion at the drop-off lane.



There is not enough visitor parking or after-school program parking.



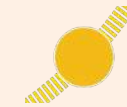
Lighting at the side parking lot and Kidango areas needs to be improved for after school programming.



The electronic marquee is broken, affecting the visibility and presence of the school.



Outside In



Sun Path



Entry



A covered waiting area is needed at the main entrance.



Much of the field is underutilized due to supervision difficulties or high slopes.



TK/K students use the Kidango play structure.



School wide assemblies take place in the courtyard.



Inside Out



Entry



The Admin is not welcoming and cramped.



The MPR is not large enough to support school-wide assemblies.



Professional development takes place in the teacher work room at the portables.



Student support, music, and after school programs are housed within portable classrooms.



Inside Out



Entry

01

More storage is needed in classrooms, especially in Special Education.

02

TK and Kinder don't have restrooms in their classrooms.

03

The Library is used for storage and Occupational Therapy meetings.

Vision

The facility master plan for this campus will focus on the bullet point list of priorities synthesized from the workshop.

At the Town Hall Workshops, we will share highlights from the Ed Specs, this report deliverable and a proposed new site diagram. Town Hall participants will be engaged in an exercise in which they choose the top five priorities and add their comments to the boards.

- Improve campus security on the perimeter.
- Improve sight lines for supervision.
- Improve parking and drop-off/pick-up.
- Transform and expand Administration into a Welcoming Entry with higher security.
- Optimize the outdoors to create outdoor learning spaces and to support physical and mental wellness.
- Increase the engagement opportunities of outdoor play areas and ensure they are universally accessible.
- A new MPR or Flex Gym to support VAPA programs and host school wide assemblies year-round.
- New Flex Labs to support after school programs, the arts, and a makerspace.
- Transform the Library into a collaborative workspace and reading room.
- Dedicated storage in rooms or adjacent to them.
- Ensure all TK/K classrooms meet the needs of early learners.
- Add shade at areas for play, dining, and outdoor learning areas.
- Incorporate seating at the hardcourt area.