



School Site Committee Visioning Workshop  
January 13th, 2022 | 9:00 - 10:30 am

Alecia Kelley, Principal

# Cassell Elementary School

## Alum Rock Union School District





Community  
Outreach

## Next Steps:

LPA team will distribute the results of the Facility Condition Assessments (FCAs) to the school sites after the winter holiday. After that, LPA will incorporate the results of the FCAs and what we heard at this workshop to create the proposed new master plan to present at the Community Town Hall workshop in Mid-March and early April 2023. The week after the Town Hall meetings, we will meet with your Site Council Committee again to review the input with your group to finalize the diagrams before we do the cost estimating.

*The Site Council Committee was oriented to understand what a master plan is and what Ed Specs are. Then highlights from the Ed Specs Visioning Workshop were shown, concluding with the draft guiding principle statement on the following page. After that, participants were asked a series of questions to draw out their ideas to improve the learning environments to support the mission and vision of Alum Rock USD.*



# Learning Shifts Focus on Student Empowerment- DRAFT

ARUSD's learning environments will support students' development of ***mind, body and spirit***. They will be empowered with the opportunity to try different ways of learning to discover how they learn best, ***find their spark*** and to ***keep the curiosity*** they were born with to become ***expert lifelong learners***. ARUSD will work to give students and families who need additional support to have an ***equal chance to thrive***, meeting all their needs.

## EMPOWERING STUDENTS TO BECOME EXPERT LEARNERS

- Multi-sensory and multi-intelligences learning
- More control at the hands of the students
- Independent choice and/or collaborative elective periods
- Less teacher-directed time
- Students setting individual goals
- Student-driven activities
- Student-chosen schedules
- More independent work time
- Relaxation rooms
- No school uniforms

## HIGHER COLLABORATION

- Team collaboration across studies, play, and extra-curricular activities
- Flexible and collaborative opportunities

## EQUITY FOR STUDENTS AND THEIR FAMILIES

- Spaces to support personal and basic needs (i.e. laundry services)
- Full day kindergarten

## MIND, BODY AND SPIRIT

- More outside and exploration time
- Play and naturalistic movement
- Bring community into the class
- Indoor and outdoor use spaces

# Visioning Questions:

1. In general, what is your **overall impression** of the campus as it exists today? How do you think the community perceives the condition of the existing campus? Is Admin working well as a welcoming space? Restrooms?
2. How well do **traffic patterns** flow on and around the campus (both vehicular and pedestrian)?
3. Do you have any observations or concerns regarding **safety and security**?
4. Are **outdoor areas** currently being utilized for educational purposes?
5. Is there adequate **play area**? If not, what would improve the current conditions?
6. Where does the school **assemble** for school-wide functions, grade-wide functions and smaller group functions?
7. How well do your **current learning spaces** support your instructional delivery? Library/Media Resource Center? Other spaces such as Makerspace? STEM? STEAM Labs? Arts? Science? After-school programs?
8. What are your most **immediate concerns** regarding current facilities?

*Participants were asked questions to draw out their ideas to improve the learning environments to support the mission and vision of Alum Rock USD.*



# 1

## Overall Impression

In general, what is your **overall impression** of the campus as it exists today? How do you think the community perceives the condition of the existing campus? Is Admin working well as a welcoming space? Restrooms?

- The school has a low enrollment.
- The community and staff feel the campus is outdated and needs upgrades but has been cared for considering its location and how old it is.
- The outdated classrooms make it challenging to support different learning modalities, yet teachers man-age.
- Admin needs to be more welcoming with a line of sight to the entry and a larger waiting area because it gets crowded and for children to wait to be picked up if their caregivers are late for pick up time.
- There are not enough student restrooms.

# 2










## Traffic Patterns

How well do **traffic patterns** flow on and around the campus (both vehicular and pedestrian)?

- Some students walk to and from school, so the entries need to accommodate that.
- There is not enough parking for visitors. Many caregivers park in the staff parking for drop off and pick up which causes frustration.
- In the morning, parents drop off their students on Arden Way which is causes congestion and is not safe.
- On Tallahassee Street caregivers double park in the loading zone.
- Another crossing guard is needed on Tallahassee Road.
- There is a traffic guard at the Arden Way and Leeward Drive intersection, but more are needed.
- The SJP program (all day childcare for infant-age 5 plus older kids after school) entry and pickup gate is on Arden Way
- (4) SDC buses park on Arden Way, not at the same time as cars do for drop off and pick up.



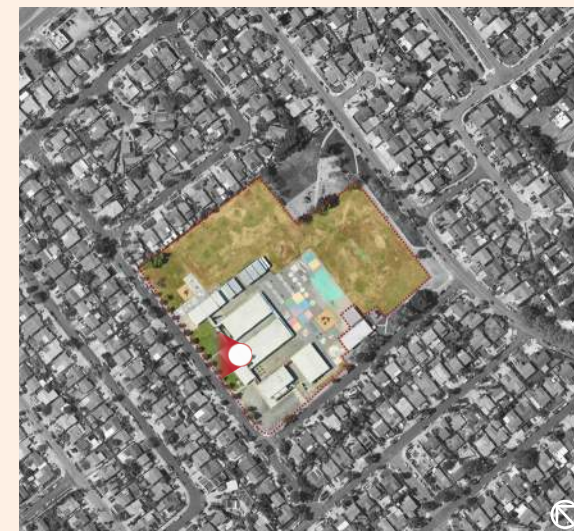
## Traffic patterns

-  Traffic Congestion
  -  Pick-up/Drop-off Loops
  -  Speed Bumps Needed
  -  Entry
- 
-  SJB Program Entry and pickup.
  -  SDC Bus drop-off and pick-up.
  -  Crossing guard wanted.
  -  Double parking at pick-up.
  -  Kindergarten dismissal gate.





## Traffic Patterns



*The Special Education bus drop off and student entry is not welcoming, the power and electrical box makes the area look unpleasant.*



# 3

## Safety & Security

Do you have any observations or concerns regarding **safety and security**?

- There are not a lot of break-ins or tagging.
- The fencing is too low, people jump over on weekend to use the basketball court.
- Perimeter fencing needs to be upgraded.
- There is little lighting on campus, walkways have some, but edges of the campus and parking are dark.
- More security cameras are needed by the front office, near bathrooms, and in between buildings and walk-ways.
- There is only one camera right now which faces the basketball court.
- After school dismissal, there are 3 gates to exit.



## Safety & Security



Entry



Security camera

# 4

## Outdoor Areas

Are **outdoor areas** currently being utilized for educational purposes?

- Outdoor areas are not currently used for purposeful learning.
- There are no shade structures outside.
- The school community wants murals to represent the neighborhood.





## Outdoor Areas



*Outdoor areas are not used for purposeful learning, but have potential.*





## Outdoor Areas



*The only shade on campus is the narrow exterior canopies attached to the building.*

# 5

## Play Areas

Is there adequate **play area**? If not, what would improve the current conditions?

- Play structures need to be appropriate for each developmental level.
- Hardcourts such as the basketball courts need to be updated.
- There should be stations for various activities (volleyball, hula hoop area, soccer, etc.) zoned and delineated with signs in the play area.
- Most of the north-east of the playfield is not used because of poor drainage and gopher holes.



# 6

## Assembly

Where does the school **assemble** for school-wide functions, grade-wide functions and smaller group functions?

- A performing arts space would be fantastic.
- For the holiday program everyone fits in the Multi-Purpose Room (MPR).
- The MPR serves as a cafeteria with tables that fold down from the wall that are not used.
- For the student of the month event, it would be great to fit everyone in the same space all at once.



## Assembly



*The Multi-Purpose Room's tables that pull out from the wall are not used.*

# 7

## Current Learning Spaces

How well do your **current learning spaces** support your instructional delivery? Library/ Media Resource Center? Other spaces such as Makerspace? STEM? STEAM Labs? Arts? Science? After school programs?

- The upper grade levels are too confined in their classrooms.
- The 4th and 5th grade mixed grade class can't exceed a load of 28:1. Normally that load would be 31:1 for each individual class.
- Furniture is too traditional and not flexible. Teachers would prefer to have learning stations.
- The library is in a portable and is very small. Additionally, if the books are not used, they cannot be dis-posed of.
- The school would like to have a performing arts program with dedicated spaces for band and instrumental music.
- Programs (arts, STEAM, etc.) need their own dedicated spaces (makerspaces).
- Special Education spaces have a variety of zones within the classrooms.
- Adaptive P.E. needs updated spaces and storage.
- The Little Heroes Program staff need dedicated offices.



# 7

## Current Learning Spaces

How well do your **current learning spaces** support your instructional delivery? Library/ Media Resource Center? Other spaces such as Makerspace? STEM? STEAM Labs? Arts? Science? After school programs?

- Before and after school programs overrun the classrooms which affects the normal class sessions.
- After school programs need to be supported equally with the other school programs.
- More custodial storage is needed throughout the campus.
- Staff needs the proper resources and space that allow them to facilitate learning for their students.
- A new science curriculum has begun with boxes of equipment received for that, which need storage.



## Current Learning Environments



*Fourth and fifth grade classes are limited with furniture that is inflexible.*





## Current Learning Environments



*The library is in a portable and very small and doesn't have storage.*





## Current Learning Environments



*Special Education spaces have a variety of zones within the classroom.*





## Current Learning Environments



*Adaptive P.E. needs updated spaces and storage.*



## Current Learning Environments



*Before and after school programs overrun the classrooms which affects the normal class sessions.*



# 8

## Immediate Concerns

What are your most **immediate concerns** regarding current facilities?

- The new science curriculum needs storage for the new equipment.
- Admin needs clear lines of sight for supervision at the entry.
- There are not enough cameras on campus, there is only one now facing the basketball courts.
- The library isn't functional for both small and large gatherings.
- Classrooms are not appropriately sized for the ages they serve. Fourth and fifth grade classrooms are too small.
- More restrooms are needed for students and staff.
- Gaps in awnings invite wasps' nests that frequently need to be removed.
- Gutters fill up on rainy days.
- Leaking HVAC units especially bad in D wing.
- New play structures are needed.
- Hardcourts need to be re-surfaced.
- Fields need to be repaired.
- The edges of the campus need lighting.
- More security cameras are needed by the front office, near bathrooms, and in between buildings and walk-ways.

# Outside-In and Inside Out

*The following pages organize the questions that were asked at the visioning workshops into two categories: Outside In and Inside Out. Outside In items capture needs outside of the buildings. Inside Out items capture needs for the buildings and the interiors. Items are listed from macro level (larger needs) to micro level (details).*



## Outside In



Sun Path



Entry



Pick up/drop off areas are too congested and need to be re-designed.



In the morning, parents drop off their students on Arden Way which causes congestion and is not safe.



Admin needs clear lines of sight for supervision at the entry.

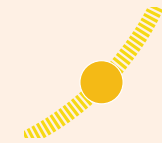


Outdoor areas are not used due to lack of shade and designated play zones that need renovation.





## Outside In



Sun Path



Entry



Perimeter fencing needs to be higher.



More parking is needed for visitors. Caregivers currently park in staff parking.



Most of the northeast side of the playfield is not used because of poor drainage and gopher holes.



Hardcourts such as the basketball courts need to be updated.





## Inside Out



Entry

01

Admin needs to be more welcoming with a line of sight to the entry and a larger waiting area because it gets crowded and for children to wait to be picked up if their caregivers are late for pick up time.

02

Upper grade levels are too confined in their classrooms, there isn't enough flexibility to accommodate the combined 4th and 5th grade classes.

03

The MPR can fit everyone for events such as the holiday program.

04

The library is in a portable which is too small and not functional to hold small and large gatherings.

# Vision

*The facility master plan for this campus will focus on the bullet point list of priorities synthesized from the workshop.*

*At the Town Hall Workshops, we will share highlights from the Ed Specs, this report deliverable and a proposed new site diagram. Town Hall participants will be engaged in an exercise in which they choose the top five priorities and add their comments to the boards.*

- Improve pickup and drop off.
- Add more cross walks and cross guards for pedestrian students.
- Add more dedicated visitor parking.
- Upgrade to higher perimeter fencing.
- Enlarge the Admin and provide visibility to the outside entry.
- Design the outdoor areas to be more usable with shading, updated hard and softscape, age-appropriate play equipment, and zoning the play area into specified play areas.
- Add a larger gathering space for school-wide assemblies and community events.
- MPR or Black Box theater for performing arts space for rehearsals and performances.
- Music Center - Band and Instrumental Music need dedicated rooms.
- Flex Lab for After school programs, art studio and makerspace.
- Flex Lab for STEAM programs.
- Enlarge the library and include spaces for small and large gatherings.
- Grades 4&5 need larger rooms to have flexibility in their classrooms for various learning activities.
- The Little Heroes program staff need dedicated offices.
- The school wants murals to represent the neighborhood.