



School Site Committee Visioning Workshop  
January 12, 2023 | 8:30 - 10:00am  
Iris Charest - Principal

## San Antonio Elementary Alum Rock Union School District





Community  
Outreach

## Next Steps:

LPA team will distribute the results of the Facility Condition Assessments (FCAs) to the school sites after the winter holiday. After that, LPA will incorporate the results of the FCAs and what we heard at this workshop to create the proposed new master plan to present at the Community Town Hall workshop in Mid-March and early April 2023. The week after the Town Hall meetings, we will meet with your Site Council Committee again to review the input with your group to finalize the diagrams before we do the cost estimating.

*The Site Council Committee was oriented to understand what a master plan is and what Ed Specs are. Then highlights from the Ed Specs Visioning Workshop were shown, concluding with the draft guiding principle statement on the following page. After that, participants were asked a series of questions to draw out their ideas to improve the learning environments to support the mission and vision of Alum Rock USD.*



# Learning Shifts Focus on Student Empowerment- DRAFT

ARUSD's learning environments will support students' development of ***mind, body and spirit***. They will be empowered with the opportunity to try different ways of learning to discover how they learn best, ***find their spark*** and to ***keep the curiosity*** they were born with to become ***expert lifelong learners***. ARUSD will work to give students and families who need additional support to have an ***equal chance to thrive***, meeting all their needs.

## EMPOWERING STUDENTS TO BECOME EXPERT LEARNERS

- Multi-sensory and multi-intelligences learning
- More control at the hands of the students
- Independent choice and/or collaborative elective periods
- Less teacher-directed time
- Students setting individual goals
- Student-driven activities
- Student-chosen schedules
- More independent work time
- Relaxation rooms
- No school uniforms

## HIGHER COLLABORATION

- Team collaboration across studies, play, and extra-curricular activities
- Flexible and collaborative opportunities

## EQUITY FOR STUDENTS AND THEIR FAMILIES

- Spaces to support personal and basic needs (i.e. laundry services)
- Full day kindergarten

## MIND, BODY AND SPIRIT

- More outside and exploration time
- Play and naturalistic movement
- Bring community into the class
- Indoor and outdoor use spaces



# Visioning Questions:

1. In general, what is your **overall impression** of the campus as it exists today? How do you think the community perceives the condition of the existing campus? Is Admin working well as a welcoming space? Restrooms?
2. How well do **traffic patterns** flow on and around the campus (both vehicular and pedestrian)?
3. Do you have any observations or concerns regarding **safety and security**?
4. Are **outdoor areas** currently being utilized for educational purposes?
5. Is there adequate **play area**? If not, what would improve the current conditions?
6. Where does the school **assemble** for school-wide functions, grade-wide functions and smaller group functions?
7. How well do your **current learning spaces** support your instructional delivery? Library/Media Resource Center? Other spaces such as Makerspace? STEM? STEAM Labs? Arts? Science? After-school programs?
8. What are your most **immediate concerns** regarding current facilities?

*Participants were asked questions to draw out their ideas to improve the learning environments to support the mission and vision of Alum Rock USD.*

# 1

## Overall Impression

In general, what is your **overall impression** of the campus as it exists today? How do you think the community perceives the condition of the existing campus? Is Admin working well as a welcoming space? Restrooms?

- The campus is great! The school is well-painted with newly re-surfaced cushioned playgrounds, making it look beautiful.
- The community loves the campus.
- The school lacks protection from the elements. On rainy days, students run to go to class.
- There are plenty of restrooms for both staff and students. Transitional kinder classrooms have their own dedicated restrooms.



## Overall Impression



*The campus needs more shade from varying weather conditions. Students regularly run to class when it rains.*



# 2




## Traffic Patterns

How well do **traffic patterns** flow on and around the campus (both vehicular and pedestrian)?

- There is vehicular traffic between LUCHA and San Antonio. Drop-off and pick-up times between schools are different, but pick-ups are sometimes not coordinated causing traffic. Some parents park in red zones.
- There is one bus for Gr 3-5 students in SPED. The bus parks for about 20 minutes in its dedicated space.
- The Mexican Heritage Plaza causes some parking issues for parents, especially during their filming season.
- There is not enough staff or visitor parking.



## Traffic patterns

-  Traffic Congestion
-  Pick-up/Drop-off Loops
-  Speed Bumps Needed



Entry



There is vehicular traffic between LUCHA and San Antonio. Drop-off and pick-up times between schools are different, but pick-ups are sometimes not coordinated causing traffic.



# 3

## Safety & Security

Do you have any observations or concerns regarding **safety and security**?

- The Admin area does not have a clear line of sight to see visitors approaching outdoors. An entry vestibule is needed to for better visitor management.
- Occasionally people will use the fire lane access, located behind LUCHA and San Antonio, to get to East San Antonio Street.
- The front gate is kept closed but not locked.
- Student restrooms are located on the exterior part of the classroom building making supervision challenging.
- The campus is prone to vandalism like tagging, which occurs outside school hours.
- The campus has security cameras facing the parking lot and the exterior part of the building. Cameras are needed in interior hallways.
- One side of the classroom building is grass only but needs paving, for rainy conditions.
- Classroom door glass vision panels are big causing safety concerns.
- Classrooms doors only lock from outside the classrooms.



## Safety & Security



Entry

01

The Admin area does not have a clear line of sight to see visitors approaching outdoors.

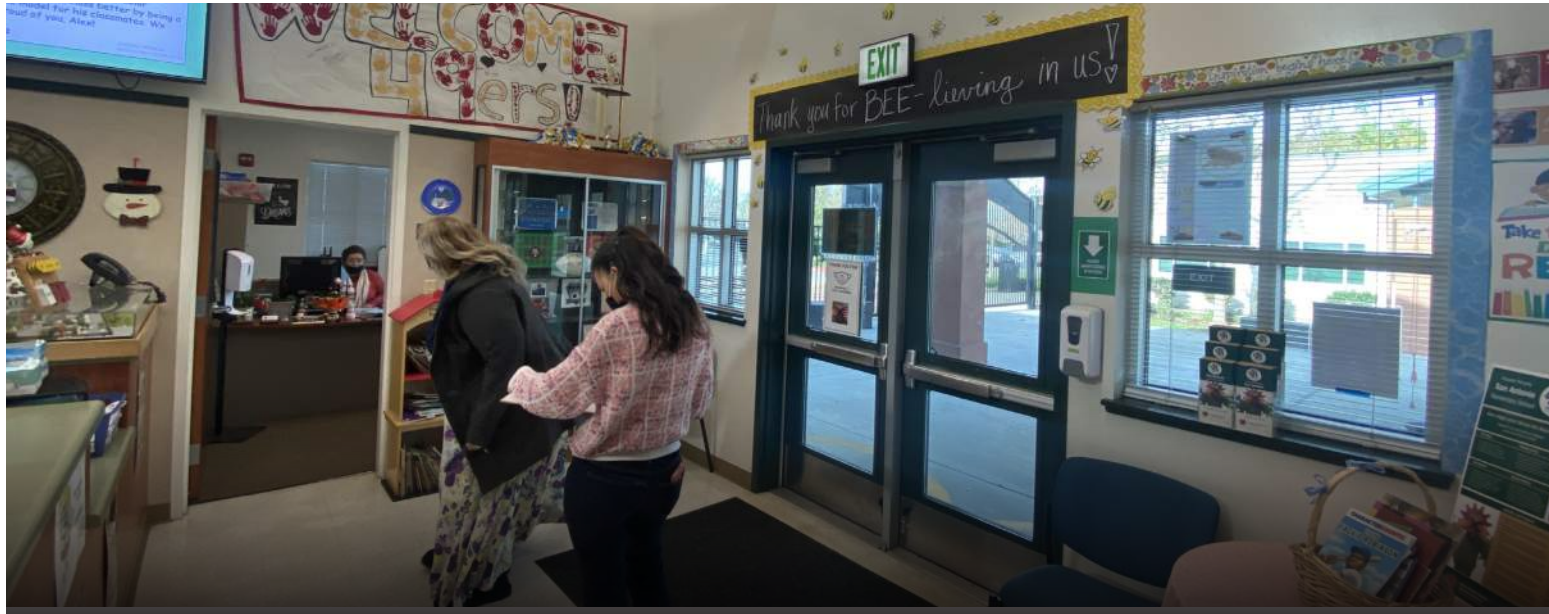
02

Occasionally people will use the fire lane access, located behind LUCHA and San Antonio, to get to East San Antonio Street.

03

One side of the classroom building is grass only but needs paving, for rainy conditions.





## Safety & Security



*The Administration area has no clear line of sight to the campus entry, and needs a vestibule for better visitor management.*





## Safety & Security



*One side of the classroom building is grass only but needs a walkway for rainy conditions.*



# 4

## Outdoor Areas

Are **outdoor areas** currently being utilized for educational purposes?

- There is a small gathering space available for learning near the cafeteria, but no walkway.
- There is an outdoor stage for gatherings.
- The TK and K area needs more outdoor tables.



## Outdoor Areas



*A paved walkway is needed to get between the cafeteria and the outdoor classroom.*





## Outdoor Areas



*There is an outdoor stage for gatherings.*

# 5

## Play Areas

Is there adequate **play area**? If not, what would improve the current conditions?

- The play structure could be bigger and more universally accessible to varying age groups.
- Playgrounds are inclusive of mild and moderate special education students.
- The playfields are in bad condition and the rain has caused damage.
- The hardcourt paving is in good condition. There are plenty of game options available, but tetherball has been the most popular.
- Plenty of seating is available and used during lunchtime, recess, and P.E.



# 6

## Assembly

Where does the school **assemble** for school-wide functions, grade-wide functions and smaller group functions?

- Assemblies are hosted in the Multi-Purpose Room (MPR) or on the outdoor stage. These spaces are usually shared between LUCHA and San Antonio. Schools must coordinate days to prevent overbooking.
- Professional Development meetings usually take place in the Cafeteria.
- Staff meetings occur in classrooms.
- The school's makerspace is in the science classroom.



## Assembly



*Assemblies are hosted in the MPR or on the outdoor stage. These spaces are usually shared between LUCHA and San Antonio.*



# 7

## Current Learning Spaces

How well do your **current learning spaces** support your instructional delivery? Library/ Media Resource Center? Other spaces such as Makerspace? STEM? STEAM Labs? Arts? Science? After school programs?

- Coding + Robotics and Restorative Justice are programs that take place in classrooms.
- The Yes We Can Read Program is offered to TK through Gr 1 students in the Library.
- The school's band does not have a dedicated classroom and must use a classroom at LUCHA for practice.
- Classrooms are an appropriate size with plenty of whiteboard space.
- The furniture is fairly new and uniform, but more collaborative and flexible furniture is needed.
- Classrooms lack natural ventilation.
- The Science classroom/makerspace has large, mobile tables and ample storage. Courses are Science and Art related, but mostly science based.
- There is a dedicated RSP classroom.
- There is a connecting door in between classrooms.



## Current Learning Environments



*Classroom furniture is fairly new and uniform, but more collaborative and flexible furniture is needed.*



# 8

## Immediate Concerns

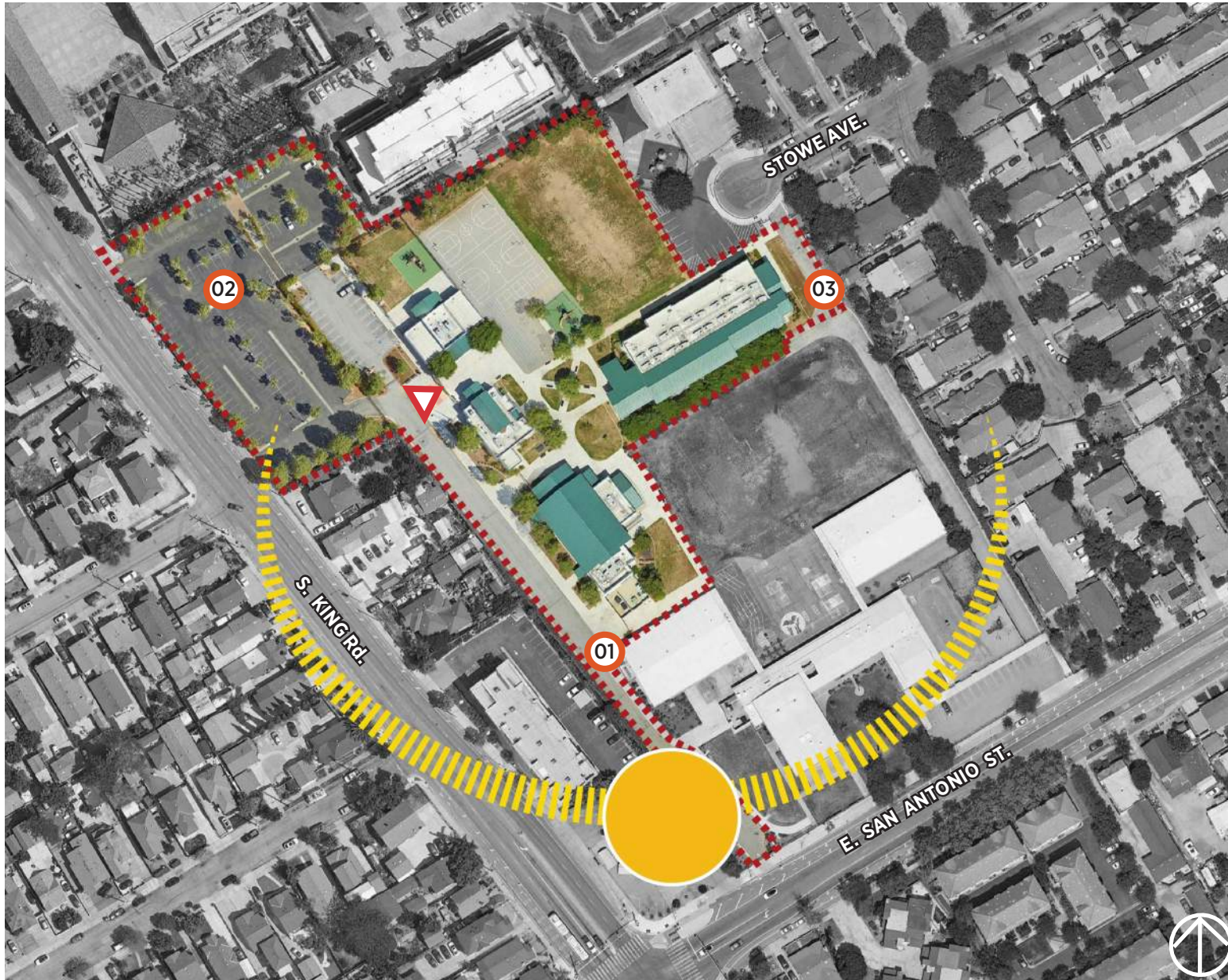
What are your most **immediate concerns** regarding current facilities?

- Provide dedicated personnel to monitor the flow of traffic.
- Provide a more secure entryway at the front office.
- Students using the outdoor restrooms need more security because it is difficult for teacher to see students coming in and out of the restroom.
- Repair the playfield.
- Classrooms door vision panels need to provide discreet visibility when classrooms are in use.
- Classroom doors need indoor lock.
- Classrooms need natural ventilation.

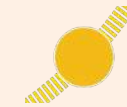
# Outside-In and Inside Out

*The following pages organize the questions that were asked at the visioning workshops into two categories: Outside In and Inside Out. Outside In items capture needs outside of the buildings. Inside Out items capture needs for the buildings and the interiors. Items are listed from macro level (larger needs) to micro level (details).*





## Outside In



Sun Path



Entry



There is traffic congestion between LUCHA and San Antonio due to drop-off / pick-up. Some parents will also park in red zones.



The Mexican Heritage Plaza causes some parking issues for parent parking, especially during their filming season.

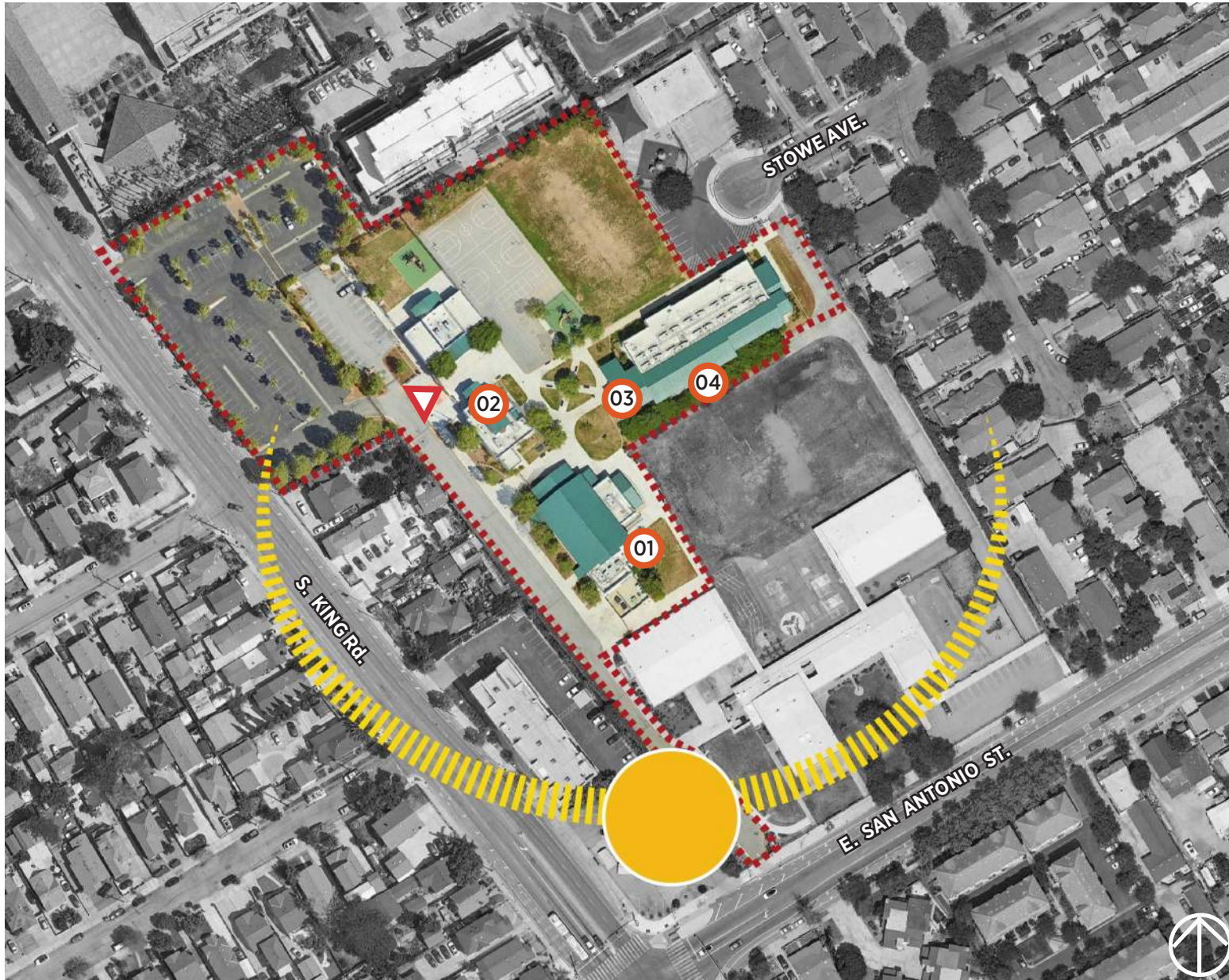


People will use the fire lane access, located behind LUCHA and San Antonio, to get to East San Antonio Street.

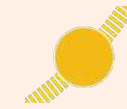


There is not enough staff or visitor parking.





## Outside In



Sun Path



Entry



A paved walkway is needed to get between the cafeteria and the outdoor classroom.



The Admin area does not have a clear line of sight to see visitors approaching outdoors.



Student restrooms are located on the exterior part of the classroom building making student supervision challenging.



A paved walkway is needed because walking through the grass can be muddy on rainy days.





# Inside Out



Entry



The school's band does not have a dedicated space and uses a classroom at LUCHA for practice.

# Vision

*The facility master plan for this campus will focus on the bullet point list of priorities synthesized from the workshop.*

*At the Town Hall Workshops, we will share highlights from the Ed Specs, this report deliverable and a proposed new site diagram. Town Hall participants will be engaged in an exercise in which they choose the top five priorities and add their comments to the boards.*

- Improve campus security at the perimeter.
- The Admin area needs an entry vestibule for better visitor management.
- Provide a shared space for professional development.
- Improve drop-off and pick-up loop.
- Provide more dedicated parking space for San Antonio ES.
- Look for opportunities to optimize the outdoors for learning.
- Provide protection from the weather elements to circulate between buildings.
- Repair the playfields.
- Create a walkway to the outdoor learning area and on one side of the existing classroom building.
- Enlarge playground and ensure it is universally accessible to varying age groups.
- Provide a dedicated music room for the school's band.
- Provide natural ventilation to classrooms.
- Renovate the K and TK outdoor areas with age-appropriate furniture.
- All classrooms doors need indoor locks and discreet visibility from the outdoors.