

School Site Committee Visioning Workshop
December 7th, 2022 | 10:30 - 12:00pm
Danielle Finnen - Principal

Joseph George Middle School Alum Rock Union School District





Community
Outreach

Next Steps:

LPA team will distribute the results of the Facility Condition Assessments (FCAs) to the school sites after the winter holiday. After that, LPA will incorporate the results of the FCAs and what we heard at this workshop to create the proposed new master plan to present at the Community Town Hall workshop in Mid-March and early April 2023. The week after the Town Hall meetings, we will meet with your Site Council Committee again to review the input with your group to finalize the diagrams before we do the cost estimating.

The Site Council Committee was oriented to understand what a master plan is and what Ed Specs are. Then highlights from the Ed Specs Visioning Workshop were shown, concluding with the draft guiding principle statement on the following page. After that, participants were asked a series of questions to draw out their ideas to improve the learning environments to support the mission and vision of Alum Rock USD.



Learning Shifts Focus on Student Empowerment- DRAFT

ARUSD's learning environments will support students' development of ***mind, body and spirit***. They will be empowered with the opportunity to try different ways of learning to discover how they learn best, ***find their spark*** and to ***keep the curiosity*** they were born with to become ***expert lifelong learners***. ARUSD will work to give students and families who need additional support to have an ***equal chance to thrive***, meeting all their needs.

EMPOWERING STUDENTS TO BECOME EXPERT LEARNERS

- Multi-sensory and multi-intelligences learning
- More control at the hands of the students
- Independent choice and/or collaborative elective periods
- Less teacher-directed time
- Students setting individual goals
- Student-driven activities
- Student-chosen schedules
- More independent work time
- Relaxation rooms
- No school uniforms

HIGHER COLLABORATION

- Team collaboration across studies, play, and extra-curricular activities
- Flexible and collaborative opportunities

EQUITY FOR STUDENTS AND THEIR FAMILIES

- Spaces to support personal and basic needs (i.e. laundry services)
- Full day kindergarten

MIND, BODY AND SPIRIT

- More outside and exploration time
- Play and naturalistic movement
- Bring community into the class
- Indoor and outdoor use spaces

Visioning Questions:

1. In general, what is your **overall impression** of the campus as it exists today? How do you think the community perceives the condition of the existing campus? Is Admin working well as a welcoming space? Restrooms?
2. How well do **traffic patterns** flow on and around the campus (both vehicular and pedestrian)?
3. Do you have any observations or concerns regarding **safety and security**?
4. Are **outdoor areas** currently being utilized for educational purposes?
5. Is there adequate **play area**? If not, what would improve the current conditions?
6. Where does the school **assemble** for school-wide functions, grade-wide functions and smaller group functions?
7. How well do your **current learning spaces** support your instructional delivery? Library/Media Resource Center? Other spaces such as Makerspace? STEM? STEAM Labs? Arts? Science? After-school programs?
8. Are there adequate outdoor spaces for **P.E. and Athletics**?
9. What are your most **immediate concerns** regarding current facilities?

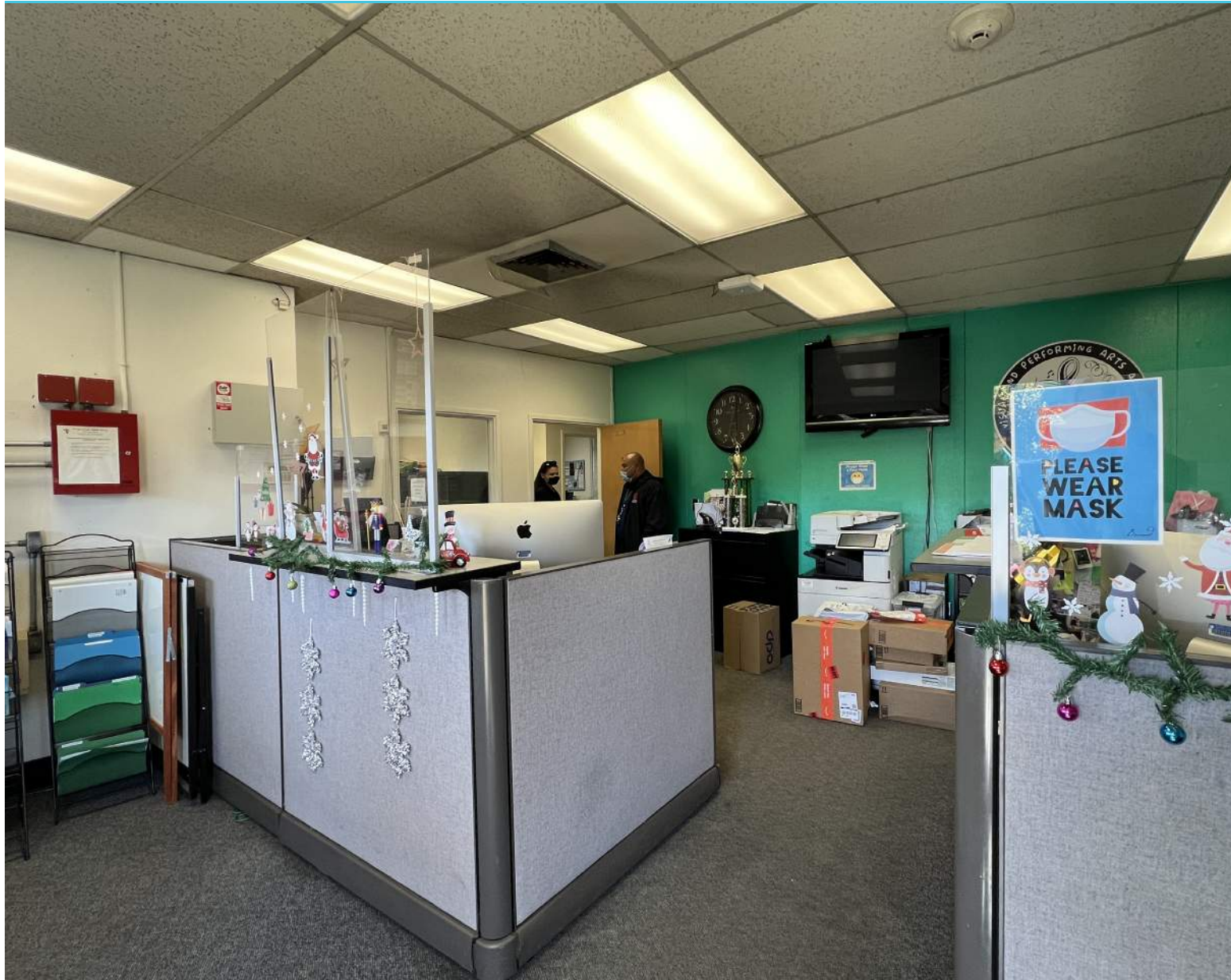
Participants were asked questions to draw out their ideas to improve the learning environments to support the mission and vision of Alum Rock USD.

1

Overall Impression

In general, what is your **overall impression** of the campus as it exists today? How do you think the community perceives the condition of the existing campus? Is Admin working well as a welcoming space? Restrooms?

- The campus is outdated. Curb appeal and updated technology is needed to reflect the robust programs.
- The Admin functions adequately but is not welcoming. It lacks visitor seating and has visual barriers that make it difficult to be greeted by the staff. The vision is to transform it into a Welcome Center.
- The outdoor sports facilities, specifically the track, are a community gathering space and that strong community connection is important to the school.
- The field is not well maintained.
- The lack of an indoor sports facility/gym affects the students day-to-day, their ability to prepare for high school, and the community since there isn't another one in the neighborhood.
- There are not enough staff restrooms on campus and the existing ones need renovation.



Overall Impression



The Admin functions adequately but is not welcoming. It lacks visitor seating and has visual barriers that make it difficult to be greeted by the staff.

2

Traffic Patterns

How well do **traffic patterns** flow on and around the campus (both vehicular and pedestrian)?

- Parking on site is very tight and contributes to congestion at drop-off.
- There aren't enough parking spaces for visitors or staff, so the church parking lot off South Claremont Avenue is used as staff parking.
- Although many students walk, the lack of a staggered start time and the shared perimeter with Cureton ES along East Hills Drive contribute to traffic congestion at drop-off and pick-up.
- (2) SPED buses use the same drop-off route as the vehicles, adding to traffic congestion.
- There is a lack of way-finding signage for visitors.
- The maintenance and delivery access driveway is used incorrectly as a drop-off area.
- Crossing guards work at the major intersections, but students are often dropped across the street due to the traffic.



Traffic patterns

- Traffic Congestion
- Pick-up/Drop-off Loops
- Speed Bumps Needed



Entry

01

Parking on site is very tight and contributes to congestion at drop-off.

02

There aren't enough parking spaces for visitors or staff, so the church parking lot off South Claremont Avenue is used as staff parking.

03

(2) SPED buses use the same drop-off route as the vehicles, adding to traffic congestion.

3

Safety & Security

Do you have any observations or concerns regarding **safety and security**?

- Fencing heights vary and the gates do not provide a secured, single point of entry.
- Additional cameras are desired to reduce blind spots.
- Lines of sight from the Admin office to the campus entrance are obstructed, presenting safety concerns. Creating the line of sight is a priority.



Safety & Security



Entry

01

Fencing heights vary and the gates do not provide a secured, single point of entry.

02

Lines of sight from the Admin office to the campus entrance are obstructed, presenting safety concerns. Creating the line of sight is a priority.

4

Outdoor Areas and Play areas

Are **outdoor areas** currently being utilized for educational purposes?

- There is no furniture to support outdoor learning. Most instruction takes place indoors with science courses being the exception in the event of project-based assignments that require more space.
- There is a community garden on site, but it is currently under-utilized.
- Shade structures for dining, socializing and learning activities are needed.
- There is a lack of clear sight lines from classrooms and offices to the outdoors that prevents using the outdoors as a learning environment.
- The basketball courts are used a lot by students as a favorite place but need re-stripping and new hoops.



Outdoor Areas



Outdoor spaces between classrooms have potential to be transformed into purposeful outdoor learning environments.



Outdoor Areas



Shade structures are needed on hardcourts and the asphalt could be broken up by adding trees with social seating.

6

Assembly

Where does the school **assemble** for school-wide functions, grade-wide functions and smaller group functions?

- The M.E.S.A. Youth Center is used as an off-site after school enrichment facility since there aren't dedicated gathering spaces on campus.
- An outdoor amphitheater for VAPA events is needed.
- Stadium seating around outdoor sports facilities is needed.
- Currently small performances take place in the MPR/Cafeteria, but there isn't enough space for dining or school performances.
- The Theater Tech Room is being used part time for stage set-up and part time as the Restorative Justice Center. Each one needs its own dedicated space.
- A new Learning Center or Wellness Center for centralizing mental health and SEL services is needed.
- A Family Resource Center is needed.



Assembly



The MPR/Cafeteria and kitchen are not large enough for meal times or school-wide gatherings.



Assembly



Shade structures are limited and do not support outdoor mealtimes and gathering.



Assembly



The Theater Tech room shares the same space with the Restorative Justice Program, but need their dedicated rooms.

7

Current Learning Spaces

How well do your **current learning spaces** support your instructional delivery? Library/ Media Resource Center? Other spaces such as Makerspace? STEM? STEAM Labs? Arts? Science? After school programs?

- Outdated technology, inadequate lighting, and outdated, fixed furniture in classrooms create conditions making it harder to support multiple learning modalities simultaneously.
- There is an inadequate number of outlets located in classrooms that makes work with one-to-one technology difficult.
- Specialized learning environments for science, visual arts, and music programs are not available.
- Science Labs are needed.
- A Flex Lab or Art studio is needed.
- Music practice rooms are needed.
- The current Wellness Center, located in B3, is a positive programming addition to the school, but an under supported and underutilized space.
- Some classrooms are Wi-Fi dead zones, making learning with technology challenging.
- The M.E.S.A. Program does not have the space it needs to support the program.



Current Learning Environments



More dedicated program and support spaces for VAPA are needed



Current Learning Environments



The makerspace needs to be relocated to a permanent flex lab.



Current Learning Environments



The Wellness Center is a great additional safe space for students to relax.

8

P.E. and Athletics

What are your most **immediate concerns** regarding current facilities?

- The MPR is small for PE activities or any training for the school sports programs. A Gym is needed to to practice for competitions and prepare students for high school sport opportunities.
- Locker rooms are small, outdated, and lack private changing areas which excludes some student populations from feeling comfortable in the program.
- Locker room showers need to be renovated to be able to use them.
- Wrestling is the only activity practicing indoors. The room is small and lacks ventilation making it smelly.
- The fields and tracks are used by the school and larger community, an important relationship to maintain, but they need maintenance and stadium seating.



P.E. & Athletics



More stadium seating is needed.



P.E. and Athletics



The wrestling room needs to be renovated and expanded.



P.E. and Athletics



Locker rooms need to be updated and organized to provide a level of privacy to students.



P.E. and Athletics



Fields need regular maintenance.

9

Immediate Concerns

What are your most **immediate concerns** regarding current facilities?

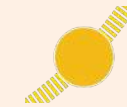
- Improved drop-off and traffic flow.
- Campus wide modernization of technology, equipment, and finishes
- Replace perimeter fencing and new gate systems as part of a single controlled point of entry at Admin.
- ADA accessibility to all outdoor spaces
- New Gym
- VAPA event space or Center with display areas.

Outside-In and Inside Out

The following pages organize the questions that were asked at the visioning workshops into two categories: Outside In and Inside Out. Outside In items capture needs outside of the buildings. Inside Out items capture needs for the buildings and the interiors. Items are listed from macro level (larger needs) to micro level (details).



Outside In



Sun Path



Entry



The campus is outdated, and curb appeal is needed.



Parking on site is very tight and there is traffic congestion at drop-off.



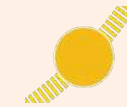
Cross walks or other pedestrian safety measures are needed.



Traffic congestion increases along the shared perimeter with Cureton ES



Outside In



Sun Path



Entry



(2) SPED buses use the same drop-off route as the vehicles, adding to traffic congestion.



Admin needs improved lines of sight to the parking lot and main entrance.



Wayfinding for visitors campus wide needs to be improved.



Inside Out



Entry



Needs updated technology, lighting, and furniture throughout.



Increase visual and direct connection from the classrooms to the outdoors.



The Theater Tech Room and Restorative Justice Center share space.



The cafeteria needs to be expanded.



Inside Out



Entry



Locker rooms and showers need to be renovated.



The wrestling room needs proper ventilation.



Restroom facilities need to be upgraded.

Vision

The facility master plan for this campus will focus on the bullet point list of priorities synthesized from the workshop.

At the Town Hall Workshops, we will share highlights from the Ed Specs, this report deliverable and a proposed new site diagram. Town Hall participants will be engaged in an exercise in which they choose the top five priorities and add their comments to the boards.

- Improve campus security on the perimeter.
- Improve sight lines for supervision.
- Improve parking and drop-off/pick-up.
- Transform and expand Administration into a Welcome Center.
- Add a Family Resource Center.
- Optimize the outdoors to create purposeful outdoor learning spaces.
- Add shaded outdoor dining area.
- A new amphitheater for Visual and Performing Arts events and all school assemblies.
- A new Gym for P.E. that can also host school-wide assemblies.
- Improve all P.E. support spaces.
- Update the track and fields and provide stadium seating.
- Add a Wellness Center.
- Add a Learning Center.
- New Science Labs with dedicated storage.