



School Site Committee Visioning Workshop
December 12th, 2022 | 1:00 - 2:30pm

Kirsten Burt, Principal

L.U.C.H.A. Elementary School Alum Rock Union School District





Community
Outreach

Next Steps:

LPA team will distribute the results of the Facility Condition Assessments (FCAs) to the school sites after the winter holiday. After that, LPA will incorporate the results of the FCAs and what we heard at this workshop to create the proposed new master plan to present at the Community Town Hall workshop in Mid-March and early April 2023. The week after the Town Hall meetings, we will meet with your Site Council Committee again to review the input with your group to finalize the diagrams before we do the cost estimating.

The Site Council Committee was oriented to understand what a master plan is and what Ed Specs are. Then highlights from the Ed Specs Visioning Workshop were shown, concluding with the draft guiding principle statement on the following page. After that, participants were asked a series of questions to draw out their ideas to improve the learning environments to support the mission and vision of Alum Rock USD.



Learning Shifts Focus on Student Empowerment- DRAFT

ARUSD's learning environments will support students' development of ***mind, body and spirit***. They will be empowered with the opportunity to try different ways of learning to discover how they learn best, ***find their spark*** and to ***keep the curiosity*** they were born with to become ***expert lifelong learners***. ARUSD will work to give students and families who need additional support to have an ***equal chance to thrive***, meeting all their needs.

EMPOWERING STUDENTS TO BECOME EXPERT LEARNERS

- Multi-sensory and multi-intelligences learning
- More control at the hands of the students
- Independent choice and/or collaborative elective periods
- Less teacher-directed time
- Students setting individual goals
- Student-driven activities
- Student-chosen schedules
- More independent work time
- Relaxation rooms
- No school uniforms

HIGHER COLLABORATION

- Team collaboration across studies, play, and extra-curricular activities
- Flexible and collaborative opportunities

EQUITY FOR STUDENTS AND THEIR FAMILIES

- Spaces to support personal and basic needs (i.e. laundry services)
- Full day kindergarten

MIND, BODY AND SPIRIT

- More outside and exploration time
- Play and naturalistic movement
- Bring community into the class
- Indoor and outdoor use spaces

Visioning Questions:

1. In general, what is your **overall impression** of the campus as it exists today? How do you think the community perceives the condition of the existing campus? Is Admin working well as a welcoming space? Restrooms?
2. How well do **traffic patterns** flow on and around the campus (both vehicular and pedestrian)?
3. Do you have any observations or concerns regarding **safety and security**?
4. Are **outdoor areas** currently being utilized for educational purposes?
5. Is there adequate **play area**? If not, what would improve the current conditions?
6. Where does the school **assemble** for school-wide functions, grade-wide functions and smaller group functions?
7. How well do your **current learning spaces** support your instructional delivery? Library/Media Resource Center? Other spaces such as Makerspace? STEM? STEAM Labs? Arts? Science? After-school programs?
8. What are your most **immediate concerns** regarding current facilities?

Participants were asked questions to draw out their ideas to improve the learning environments to support the mission and vision of Alum Rock USD.

1

Overall Impression

In general, what is your **overall impression** of the campus as it exists today? How do you think the community perceives the condition of the existing campus? Is Admin working well as a welcoming space? Restrooms?

- The campus isn't very inspiring and is outdated.
- Generally, there is a lack of signage, but especially a lack of signage separating San Antonio Elementary School from L.U.C.H.A. Elementary School.
- Maintenance of the site needs improvement.
- There is a perception that the district does not invest in L.U.C.H.A. enough
- Circulation is confusing, visitors get lost.
- The site is tight: there isn't enough parking, playground space, grassy space, or extra classrooms.
- Admin space is not spacious enough to create a welcoming environment.
- Facilities don't support technology innovation. For example, there are not enough outlets.

1

Overall Impression

In general, what is your **overall impression** of the campus as it exists today? How do you think the community perceives the condition of the existing campus? Is Admin working well as a welcoming space? Restrooms?

- The community appreciates the learning experience but agrees that facility curb appeal is needed.
- The parents have created a “school of choice” with teacher home visits and monthly parent nights.
- Organization partnerships have a lack of consistent support.
- Restrooms need to be renovated. TK and K don’t have restrooms in the classrooms. Staff needs more restrooms.
- A Parent Resource Center is a critical need to be prioritized over a Wellness Center.



Overall Impression



*The front office is not
welcoming.*

2




Traffic Patterns

How well do **traffic patterns** flow on and around the campus (both vehicular and pedestrian)?

- Most students do not walk to school.
- Drop-off and pick-up time have traffic congestion.
- The kindergarten pickup is not a problem due to staggered pick-up time, but a separate drop-off zone is needed.
- There are no Special Education buses at this site.
- Staff doesn't have enough parking with only 10 spaces.
- Staff and visitors use neighborhood parking or park at the Mexican Heritage Plaza which does not cover the needs.
- Drivers turning left into the drive from East San Antonio Street create a challenge for safety. There is a double yellow line they are crossing.
- Drivers park on the fire lane.







Traffic patterns

-  Traffic Congestion
-  Pick-up/Drop-off Loops
-  Speed Bumps Needed



Entry

-  Staff overflow parking.
-  Fire Lane
-  Closed gate.
-  Staff Parking

3

Safety & Security

Do you have any observations or concerns regarding **safety and security**?

- Around the driveway, fencing and gates do not provide a secured, single point of entry.
- There is no fencing around the outdoor area to the south of the Multi-Purpose room and A buildings.
- There are no cameras in the Kinder area or at the driveway access.
- Higher perimeter fencing is needed.
- The only lighting is under the exterior circulation canopies, there isn't any in the parking lot.
- There was a vehicle break-in recently.



Safety & Security



Entry



There is no fencing around the outdoor area to the south of the Multi-Purpose room and A buildings.

4

Outdoor Areas

Are **outdoor areas** currently being utilized for educational purposes?

- Classes are not using the outdoors for learning.
- There are no shade structures.
- The grass field is not used because it is uneven.
- Outdoor court areas are lacking clear sightlines for supervision.
- There are no tables and chairs to support learning activities.
- The shaded P.E. prep zone is shared with San Antonio ES.
- P.E. and recess equipment are stored in the boiler room. It needs to be easily accessible to the outdoors.
- There is a mature tree at the front of campus which is much loved and part of the school's signature



Outdoor Areas



Classes are not using the outdoors for learning.



Outdoor Areas



There are no shade trees or umbrellas in the tables.



Outdoor Areas



Outdoor court areas are lacking clear sightlines for supervision.



Outdoor Areas



P.E. and recess equipment are stored in the boiler room. It needs to be easily accessible to the outdoors.

5

Play Areas

Is there adequate **play area**? If not, what would improve the current conditions?

- The Kindergarten and Transitional Kindergarten playground needs to be re-designed with shade added and new play apparatus. Storage for loose parts and outdoor activity equipment and materials is needed.
- Grades 1-5 don't have a play structure.
- Play fields have poor drainage.



Outdoor Areas



The Kindergarten and Transitional Kindergarten playground needs to be re-designed with shade added and new play apparatus.



Outdoor Areas



TK and K need storage for loose play equipment.



Outdoor Areas



The field has poor drainage.

6

Assembly

Where does the school **assemble** for school-wide functions, grade-wide functions and smaller group functions?

- The cafeteria is used for indoor assemblies and staggered lunch periods. It is too small for all school gatherings.
- The cafeteria lacks flexibility, enhanced acoustics, drinking fountain, and has outdated furniture.
- There are no private meeting rooms.
- The amphitheater needs tiered seating. Circulation does not work well, and the shade structure is not efficient.
- For graduation, L.U.C.H.A. ES uses the San Antonio ES amphitheater.
- The faculty lounge is not welcoming.
- The Multi-Purpose room does not have heat and the AC doesn't work for a space this large.
- Display and presentation areas would be great.



Assembly



The cafeteria is used for indoor assemblies and staggered lunch periods. It is too small for all school gatherings.



Assembly



The cafeteria lacks flexibility, enhanced acoustics, drinking fountain, and has outdated furniture.



Assembly



The faculty lounge is not welcoming.

7

Current Learning Spaces

How well do your **current learning spaces** support your instructional delivery? Library/ Media Resource Center? Other spaces such as Makerspace? STEM? STEAM Labs? Arts? Science? After school programs?

- The campus is at both space and program capacity.
- Science and art programs have no dedicated spaces.
- There is a need for wellness and sensory rooms or equipment, and a lack of staffing for this.
- Classrooms lack storage.
- The library is a “dead zone”, used as an emergency, catch-all MPR. It has potential to become a STEAM room or a Media Resource Center and Learning Center with an MPR.
- The Music Room is shared with San Antonio Elementary School.
- There is no student work display space for parents and visitors to see.
- Professional Development takes place in classrooms.
- The YMCA programs use 5 classrooms at a time, rotating which classrooms are used. This program has no storage which would make it easier.
- L.U.C.H.A. ES uses the speech rooms at San Antonio ES.



Current Learning Environments



The library functions as a “catch-all” MPR.



Current Learning Environments



Classrooms need improved storage.

8

Immediate Concerns

What are your most **immediate concerns** regarding current facilities?

- Gates and fencing need to be revised as part of creating a controlled single point of entry to the campus.
- Playgrounds, equipment, and play field need renovation.
- Furniture and finishes need modernization.
- Traffic flow and parking needs to be improved.
- There needs to be increased branding and signage to advertise the school.
- Parents need a Parent Resource Center to support the Community Liaison's work.
- The grass field needs to be renovated because it is full of rocks and has poor drainage.
- There is poor wayfinding with lack of signage to separate L.U.C.H.A. ES from San Antonio ES.
- There are no cameras in the kinder area or at the driveway access.

8

Immediate Concerns

What are your most **immediate concerns** regarding current facilities?

- The only lighting is under the hallways, there isn't any lighting in the parking lot.
- Facilities need technology innovation.
- Science and art programs have no dedicated spaces.
- Restrooms need modernization.
- Furniture and finishes need modernization.
- Add signage for wayfinding.
- Add cameras for full campus coverage.
- Ensure the entire campus is lit during early morning and evening hours.
- There is flooding at the access gate.



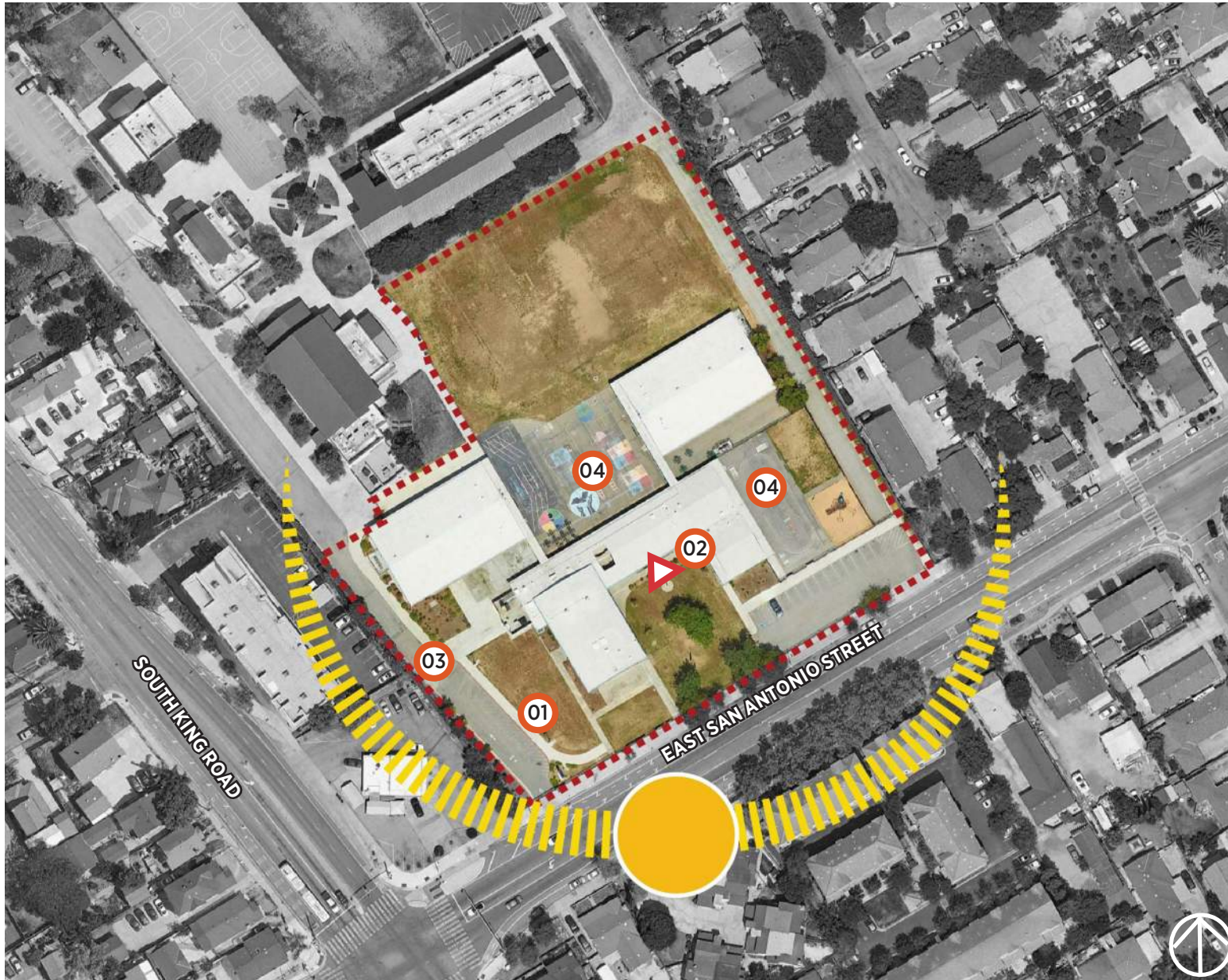
Immediate Concerns



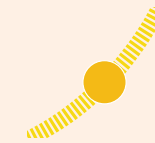
There is flooding at the access gate.

Outside-In and Inside Out

The following pages organize the questions that were asked at the visioning workshops into two categories: Outside In and Inside Out. Outside In items capture needs outside of the buildings. Inside Out items capture needs for the buildings and the interiors. Items are listed from macro level (larger needs) to micro level (details).



Outside In



Sun Path



Entry

01

Curb appeal is needed.

02

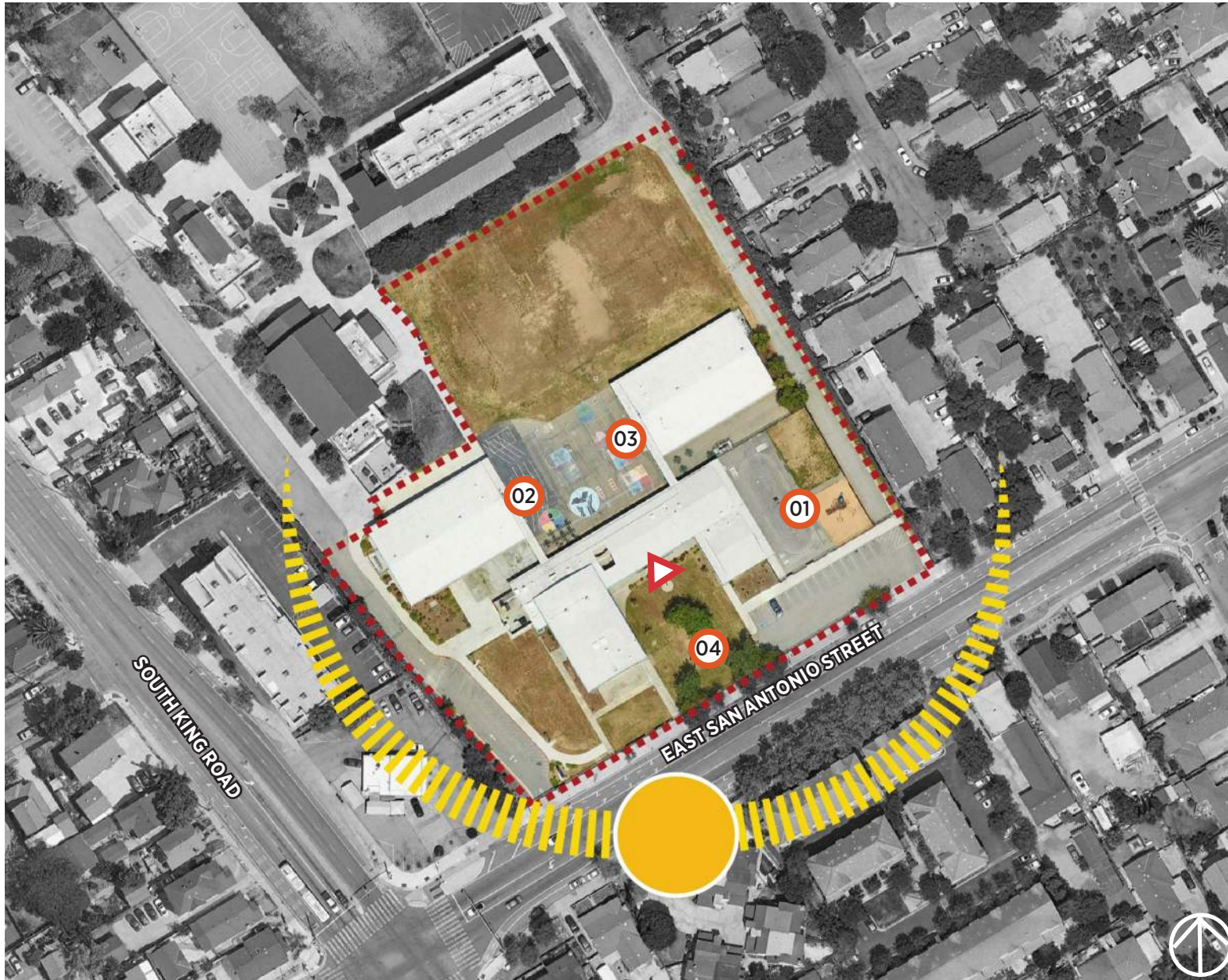
Create a controlled single point of entry.

03

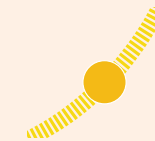
Drop-off and pickup become congested.

04

Optimize outdoor spaces adjacent to classrooms.



Outside In



Sun Path



Entry

01

Redesign TK/K playgrounds for inclusivity.

02

The amphitheater needs tiered seating, better circulation, and more shade.

03

P.E. and prep spaces are shared with San Antonio ES.

04

There is a mature tree at the front of campus which is much loved and part of the school's signature



Inside Out



Entry



Admin needs a redesign to create a Welcome Center



The library only used as an emergency, catch-all room.



The cafeteria is too small for all school gatherings and lacks flexibility and enhanced acoustics.



Inside Out



Entry



Classrooms lack storage.



Kindergarten doors are located at the front of school.



Professional development takes place within a classroom.



The YMCA program storage.

Vision

The facility master plan for this campus will focus on the bullet point list of priorities synthesized from the workshop.

At the Town Hall Workshops, we will share highlights from the Ed Specs, this report deliverable and a proposed new site diagram. Town Hall participants will be engaged in an exercise in which they choose the top five priorities and add their comments to the boards.

- Create a secure perimeter and secured, single point of entry.
- Add parking for staff and visitors.
- Improve drop-off circulation.
- Add a dedicated drop off area for Kindergarten.
- Transform Admin into a Welcome Center.
- Add a Parent Resource Center in the Welcome Center.
- Add a Community Resource Center with space for Professional Development.
- Add a Media Center
- Add a Learning Center
- Add a Wellness Center
- Add Flex Labs for STEAM, Art, and Music.
- Ensure all TK/K classrooms have direct access to restrooms.
- Add PE storage and office.
- Maintain the mature tree at the front of campus.
- Use areas between classroom buildings for outdoor learning with direct visual connections and shade.
- Add an outdoor amphitheater space with tiered seating.