

School Site Committee Visioning Workshop
January 11th, 2023 | 8:30 - 10:00am
Theresa Smith - Principal

Cureton Elementary School Alum Rock Union School District





Community
Outreach

Next Steps:

LPA team will distribute the results of the Facility Condition Assessments (FCAs) to the school sites after the winter holiday. After that, LPA will incorporate the results of the FCAs and what we heard at this workshop to create the proposed new master plan to present at the Community Town Hall workshop in Mid-March and early April 2023. The week after the Town Hall meetings, we will meet with your Site Council Committee again to review the input with your group to finalize the diagrams before we do the cost estimating.

The Site Council Committee was oriented to understand what a master plan is and what Ed Specs are. Then highlights from the Ed Specs Visioning Workshop were shown, concluding with the draft guiding principle statement on the following page. After that, participants were asked a series of questions to draw out their ideas to improve the learning environments to support the mission and vision of Alum Rock USD.



Learning Shifts Focus on Student Empowerment- DRAFT

ARUSD's learning environments will support students' development of *mind, body and spirit*. They will be empowered with the opportunity to try different ways of learning to discover how they learn best, *find their spark* and to *keep the curiosity* they were born with to become *expert lifelong learners*. ARUSD will work to give students and families who need additional support to have an *equal chance to thrive*, meeting all their needs.

EMPOWERING STUDENTS TO BECOME EXPERT LEARNERS

- Multi-sensory and multi-intelligences learning
- More control at the hands of the students
- Independent choice and/or collaborative elective periods
- Less teacher-directed time
- Students setting individual goals
- Student-driven activities
- Student-chosen schedules
- More independent work time
- Relaxation rooms
- No school uniforms

HIGHER COLLABORATION

- Team collaboration across studies, play, and extra-curricular activities
- Flexible and collaborative opportunities

EQUITY FOR STUDENTS AND THEIR FAMILIES

- Spaces to support personal and basic needs (i.e. laundry services)
- Full day kindergarten

MIND, BODY AND SPIRIT

- More outside and exploration time
- Play and naturalistic movement
- Bring community into the class
- Indoor and outdoor use spaces

Visioning Questions:

1. In general, what is your **overall impression** of the campus as it exists today? How do you think the community perceives the condition of the existing campus? Is Admin working well as a welcoming space? Restrooms?
2. How well do **traffic patterns** flow on and around the campus (both vehicular and pedestrian)?
3. Do you have any observations or concerns regarding **safety and security**?
4. Are **outdoor areas** currently being utilized for educational purposes?
5. Is there adequate **play area**? If not, what would improve the current conditions?
6. Where does the school **assemble** for school-wide functions, grade-wide functions and smaller group functions?
7. How well do your **current learning spaces** support your instructional delivery? Library/Media Resource Center? Other spaces such as Makerspace? STEM? STEAM Labs? Arts? Science? After-school programs?
8. What are your most **immediate concerns** regarding current facilities?

Participants were asked questions to draw out their ideas to improve the learning environments to support the mission and vision of Alum Rock USD.

1

Overall Impression

In general, what is your **overall impression** of the campus as it exists today? How do you think the community perceives the condition of the existing campus? Is Admin working well as a welcoming space? Restrooms?

- The school has a nice presence in the neighborhood; with a recently updated entry way this site feels more welcoming than others in the district.
- The campus buildings are too spread out for clear lines of sight for supervision, for example the back lot/playground area and restroom locations.
- Transition times between programs is long because of the distances.
- Admin is located next to the main gate, but circulation to the front office is separated from the rest of the campus making students access to the nurse difficult.
- Cureton is a Visual and Performing Arts (VAPA) elementary school that ties directly in with Joseph George Middle School across the street. The arts or music space are run out of crowded portables. This doesn't align with the VAPA vision of the school.



Overall Impression



Curb appeal is good and the Admin building is easily locatable.

2

Traffic Patterns

How well do **traffic patterns** flow on and around the campus (both vehicular and pedestrian)?

- Overall, parking and drop-off works well, but could be improved along East Hills Dr. where traffic congestion is heavy, and speeding is a problem since it serves both Cureton ES and Joseph George MS.
- The front parking lot is currently used for visitors or drop-off and the side lot is used for Kidango.
- The front parking lot is used for regular food distribution centers, partnering with Second Harvest Food Bank.
- Only one SPED school bus services this campus and the bus lane is adequate.
- Currently there is only one crossing guard. For pedestrian safety, adding another controlled crossing point and preventive safety measures like speed bumps and signage is needed



Traffic patterns

- Traffic Congestion
- Pick-up/Drop-off Loops
- Speed Bumps Needed



Entry

01

Overall, parking and drop-off works well, but could be improved along East Hills Dr. where traffic congestion is heavy, and speeding is a problem.

02

Only one SPED school bus services this campus and the bus lane is adequate.

03

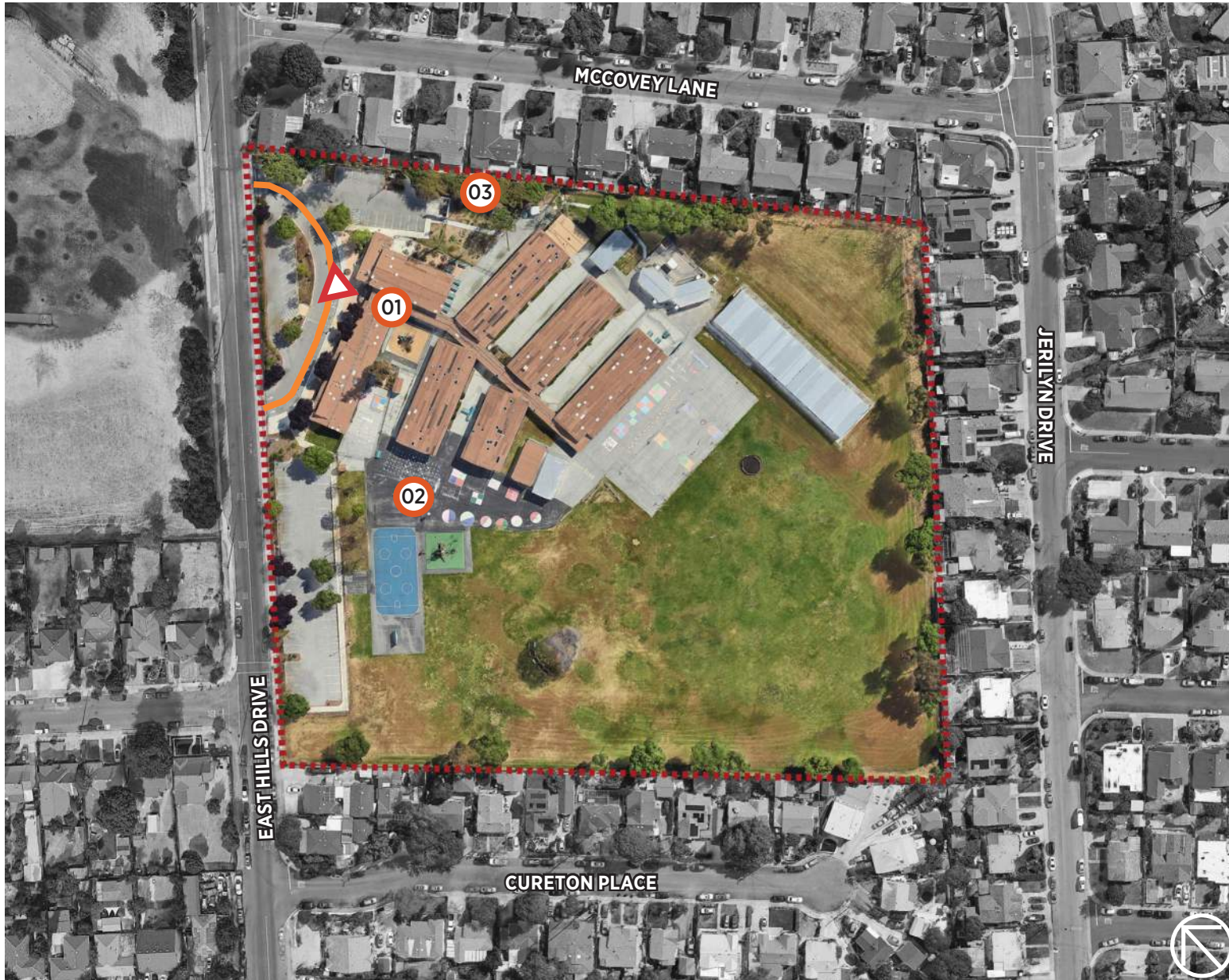
For pedestrian safety, adding another controlled crossing point and preventive safety measures like speed bumps and signage is needed.

3

Safety & Security

Do you have any observations or concerns regarding **safety and security**?

- The front office is only accessible via the main gate to the site, as a result that gate remains open all day and must be monitored. A single point of entry that is separated from the main gate is needed.
- Since there are not clear lines of sight to the traffic loop, the hardscape, Kidango buildings, Family Resource Center, and the TK play area are, security cameras are needed.
- The P.A. System needs to be repaired.
- Lighting is needed at the hard courts, the eastern black top, and kinder play area for both after school programs and the custodians on evening shifts.
- The fencing is adequate to secure the campus, but the chain link fence along the back of neighboring houses needs screening for privacy.



Safety & Security



Entry

01

A single point of entry that is separated from the main gate is needed.

02

Lighting is needed at the hard courts, the eastern black top, and kinder play area for both after school programs and the custodians on evening shifts.

03

The fencing is adequate to secure the campus, but the chain link fence along the back of neighboring houses needs screening for privacy



Overall Impression



Lines of sight from the Admin out towards campus and the main entrance need to be opened up.

4

Outdoor Areas

Are **outdoor areas** currently being utilized for educational purposes?

- The pavement and black top is uneven, cracked, and in need of replacement.
- Outdoor corridors between finger buildings lack shade, landscape, furniture and are not used at all.
- Benches are in poor condition surrounded by landscaping that is not well maintained and not used.
- Trees and shade structures to protect from the elements are needed for all grades to dine, play and learn outdoors.
- Upper grades need more outdoor play options.
- The northwest grass area at the corner of campus is not used at all.
- There is a garden, but it is not being maintained. The plan is to begin the garden again.



Outdoor Areas



Landscaping and furniture needs to be updated.



Outdoor Areas



Outdoor spaces between classrooms have potential to be transformed into purposeful outdoor learning environments.

5

Play Area

Where does the school **assemble** for school-wide functions, grade-wide functions and smaller group functions?

- A unified play area with clear lines of sight or supervision directly connected to the cafeteria is needed.
- Rubberized play surfaces under the climbing equipment need to be replaced.
- Kindergarten play area has flooding in heavy rain.
- Fields are uneven and need to be repaired so they can be used.
- Gaga ball court is in poor condition and needs to be replaced.
- Hardscapes need more courts and games for the students to play on the black top.



Play Areas



Hardscapes need an engaging court design that outlines courts and games.



Play Areas



Fields are uneven and require a high level of maintenance.



Play Areas



Rubberized play surfaces are uneven and need replaced.

6

Assembly

Where does the school **assemble** for school-wide functions, grade-wide functions and smaller group functions?

- The cafeteria is used for smaller group assemblies but it's not large enough for an all-school assembly.
- The cafeteria is used most of the day for meals, so another indoor space is needed for PE and events.
- There is no outdoor space that with infrastructure to support as a school-wide gathering area.
- Grade performances are held in the cafeteria. VAPA events are held at Joseph George MS or another off-site location.
- Staff and faculty gatherings for professional development take place in a classroom (not optimal).



Assembly



The cafeteria is used for smaller group assemblies but it's not large enough for an all-school assembly.



Current Learning Environments



An outdoor space with improved seating and shade is needed.

7

Current Learning Spaces

How well do your **current learning spaces** support your instructional delivery? Library/ Media Resource Center? Other spaces such as Makerspace? STEM? STEAM Labs? Arts? Science? After school programs?

- Art offered at every grade level, has a storage classroom but is a traveling curriculum.
- Music offered at every grade level, is in a cramped portable.
- After school programs have their own designated rooms, but there is a need to consolidate partner program and resource spaces into a shared hub space.
- Classrooms aren't large enough for the upper grade students.
- The Community Liaison is in the Admin. And should be relocated into a Resource Center that serves Cureton ES directly.
- The library is in a portable currently used as storage. It has potential to be renovated to use for learning.
- Uniform technology accessible to all learners is needed across all learning environments.



Current Learning Environments



A dedicated and supported space for Adaptive P.E. is needed.



Current Learning Environments



Spaces such as the library are unused and could be reimaged into new learning opportunities.



Current Learning Environments



More daylight and direct connection to the outdoors is needed in classrooms.

8

Immediate Concerns

What are your most **immediate concerns** regarding current facilities?

- A single point of entry that is separated from the main gate is needed.
- Since there are not clear lines of sight to the traffic loop, the hardscape, Kidango buildings, Family Resource Center, and the TK play area are, security cameras are needed.
- The P.A. System needs to be repaired.
- Lighting is needed at the hard courts, the eastern black top, and kinder play area for both after school programs and the custodians on evening shifts.
- The chain link fence along the back of neighboring houses needs screening for privacy.
- For pedestrian safety, adding another controlled crossing point and preventive safety measures like speed bumps and signage is needed.
- The black top is uneven, cracked, and in need of replacement with more games and courts.
- Rubberized play surfaces under the climbing equipment need to be replaced.
- Portables are deteriorating and need to be removed.

8

Immediate Concerns

What are your most **immediate concerns** regarding current facilities?

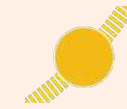
- Sitewide plumbing requires regular maintenance.
- Central HVAC is needed campuswide.
- Drainage improvements are needed to address exterior puddling and interior flooding.
- Fields are uneven and need to be repaired so they can be used.
- Updated and equitable technology needed in every room including the P.A. and bell system.
- Install shade structures for lunch and play areas.
- There is no outdoor space that with infrastructure to support as a school-wide gathering area.
- There aren't enough restrooms for 1st-5th graders and teachers who need to travel long distances in between classes.
- Rubberized play surfaces under the climbing equipment need to be replaced.
- The Gaga ball court is in poor condition and needs to be replaced.

Outside-In and Inside Out

The following pages organize the questions that were asked at the visioning workshops into two categories: Outside In and Inside Out. Outside In items capture needs outside of the buildings. Inside Out items capture needs for the buildings and the interiors. Items are listed from macro level (larger needs) to micro level (details).



Outside In



Sun Path



Entry



Traffic congestion is heavy at the shared perimeter with Joseph George MS along East Hills Dr.



A single point of entry that is separated from the main gate is needed.



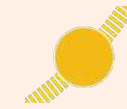
The campus buildings are too spread out for clear lines of sight for supervision, for example the back lot/ playground area and restroom locations.



The northwest grass area at the corner of campus is not used at all.



Outside In



Sun Path



Entry

01

There is an abandoned garden that needs to be revitalized.

02

More staff and student restroom facilities are needed sitewide

03

Lighting is needed at the hard courts, the eastern black top, and kinder play area for both after school programs and the custodians on evening shifts.



Inside Out



Entry



Circulation to the front office needs to be accessible from the rest of campus.



Portables are deteriorating



Admin is located next to the main gate, but circulation to the front office is separated from the rest of the campus making students access to the nurse difficult.



Music offered at every grade level, is in a cramped portable.



Inside Out



Entry



The library is in a portable currently used as storage. It has potential to be renovated to use for learning.



The cafeteria is used for smaller group assemblies but it's not large enough for an all-school assembly.



VAPA events are held at Joseph George MS or another off-site location.

Vision

The facility master plan for this campus will focus on the bullet point list of priorities synthesized from the workshop.

At the Town Hall Workshops, we will share highlights from the Ed Specs, this report deliverable and a proposed new site diagram. Town Hall participants will be engaged in an exercise in which they choose the top five priorities and add their comments to the boards.

This site has been classified as a Tier 3 campus. Based on this classification, the vision for this campus includes:

- Modernization of existing buildings.
- Repairs and replacements of building systems and finishes as identified in the Facility Condition Assessment reports.
- Room uses organized for optimal adjacencies.