



School Site Committee Visioning Workshop
January 17th, 2023| 1:30 - 3:00pm
Paula Alli - Principal

Cesar Chavez Early Learning Center (ES) Alum Rock Union School District





Community
Outreach

Next Steps:

LPA team will distribute the results of the Facility Condition Assessments (FCAs) to the school sites after the winter holiday. After that, LPA will incorporate the results of the FCAs and what we heard at this workshop to create the proposed new master plan to present at the Community Town Hall workshop in Mid-March and early April 2023. The week after the Town Hall meetings, we will meet with your Site Council Committee again to review the input with your group to finalize the diagrams before we do the cost estimating.

The Site Council Committee was oriented to understand what a master plan is and what Ed Specs are. Then highlights from the Ed Specs Visioning Workshop were shown, concluding with the draft guiding principle statement on the following page. After that, participants were asked a series of questions to draw out their ideas to improve the learning environments to support the mission and vision of Alum Rock USD.



Learning Shifts Focus on Student Empowerment- DRAFT

ARUSD's learning environments will support students' development of ***mind, body and spirit***. They will be empowered with the opportunity to try different ways of learning to discover how they learn best, ***find their spark*** and to ***keep the curiosity*** they were born with to become ***expert lifelong learners***. ARUSD will work to give students and families who need additional support to have an ***equal chance to thrive***, meeting all their needs.

EMPOWERING STUDENTS TO BECOME EXPERT LEARNERS

- Multi-sensory and multi-intelligences learning
- More control at the hands of the students
- Independent choice and/or collaborative elective periods
- Less teacher-directed time
- Students setting individual goals
- Student-driven activities
- Student-chosen schedules
- More independent work time
- Relaxation rooms
- No school uniforms

HIGHER COLLABORATION

- Team collaboration across studies, play, and extra-curricular activities
- Flexible and collaborative opportunities

EQUITY FOR STUDENTS AND THEIR FAMILIES

- Spaces to support personal and basic needs (i.e. laundry services)
- Full day kindergarten

MIND, BODY AND SPIRIT

- More outside and exploration time
- Play and naturalistic movement
- Bring community into the class
- Indoor and outdoor use spaces

Visioning Questions:

1. In general, what is your **overall impression** of the campus as it exists today? How do you think the community perceives the condition of the existing campus? Is Admin working well as a welcoming space? Restrooms?
2. How well do **traffic patterns** flow on and around the campus (both vehicular and pedestrian)?
3. Do you have any observations or concerns regarding **safety and security**?
4. Are **outdoor areas** currently being utilized for educational purposes?
5. Is there adequate **play area**? If not, what would improve the current conditions?
6. Where does the school **assemble** for school-wide functions, grade-wide functions and smaller group functions?
7. How well do your **current learning spaces** support your instructional delivery? Library/Media Resource Center? Other spaces such as Makerspace? STEM? STEAM Labs? Arts? Science? After-school programs?
8. What are your most **immediate concerns** regarding current facilities?

Participants were asked questions to draw out their ideas to improve the learning environments to support the mission and vision of Alum Rock USD.

1

Overall Impression

In general, what is your **overall impression** of the campus as it exists today? How do you think the community perceives the condition of the existing campus? Is Admin working well as a welcoming space? Restrooms?

- The campus needs to be spruced up and painted for maintenance and aesthetics.
- More custodial support is needed.
- Admin office strives for inclusivity. It is easily accessible and welcoming to the public.
- Students have adequate restrooms. The restrooms next to the classrooms don't get a lot of use.
- Staff has an adequate number of restrooms now, but more may be needed in the future.
- There is a concern that Kidango (the early childhood after-school program) will not want to share spaces. In partnership with Kidango, Cesar Chavez ELC offers:

Transitional Kindergarten (TK) and Kindergarten (Ages 4-5)

Early care and education services

Full-day infant, toddler, and preschool care

Part-day preschool care (3 hour sessions)

After school care and summer school for children in TK and Kinder



Overall Impression



The admin office is easily accessible and welcoming to the public.

2




Traffic Patterns

How well do **traffic patterns** flow on and around the campus (both vehicular and pedestrian)?

- The two parking lots are over capacity, causing issues with parents, staff, and the Kidango Program.
- Additional parking and dedicated pick-up/drop-off loops are needed for full enrollment capacity in the future.



Traffic patterns

-  Traffic Congestion
-  Pick-up/Drop-off Loops
-  Speed Bumps Needed



Entry



The two parking lots are over capacity, causing issues with parents, staff, and the Kidango Program.

3

Safety & Security

Do you have any observations or concerns regarding **safety and security**?

- School has experienced vandalism, some tagging outside of school hours.
- More site lighting is needed.
- More security cameras needed throughout.



Safety & Security



Entry

01

More site lighting is needed.

02

More security cameras are needed throughout.

4

Outdoor Areas

Are **outdoor areas** currently being utilized for educational purposes?

- Wayfinding and outdoor signage are needed to navigate through the school
- Some paved areas have flooding on rainy days.
- The garden needs maintenance.
- There is potential to optimize the outdoors for learning for varying groups sizes.
- More combination bottle filling station/drinking fountains are needed.
- Handwashing stations are needed inside classrooms.



Outdoor Areas



The garden needs maintenance.



Outdoor Areas



The area near the cafeteria and stage floods during rainy days.

5

Play Areas

Is there adequate **play area**? If not, what would improve the current conditions?

- Play areas need resurfacing and need to be zoned to be age appropriate.
- Play areas should enhance motor development skills and be inclusive to all.

6

Assembly

Where does the school **assemble** for school-wide functions, grade-wide functions and smaller group functions?

- The Cafeteria is used for gatherings.
- A lounge or safe space is needed for families where they feel comfortable seeking support.
- Lactation rooms with dedicated sinks are needed for community or staff to use.



Assembly



The Cafeteria is the main gathering space.

7

Current Learning Spaces

How well do your **current learning spaces** support your instructional delivery? Library/ Media Resource Center? Other spaces such as Makerspace? STEM? STEAM Labs? Arts? Science? After school programs?

- Roofs need repair, they leak into some classrooms.
- Classroom carpeting needs to be replaced.
- More daylight for classrooms is needed.
- A library is needed.



Current Learning Environments



Classrooms lack natural lighting

8

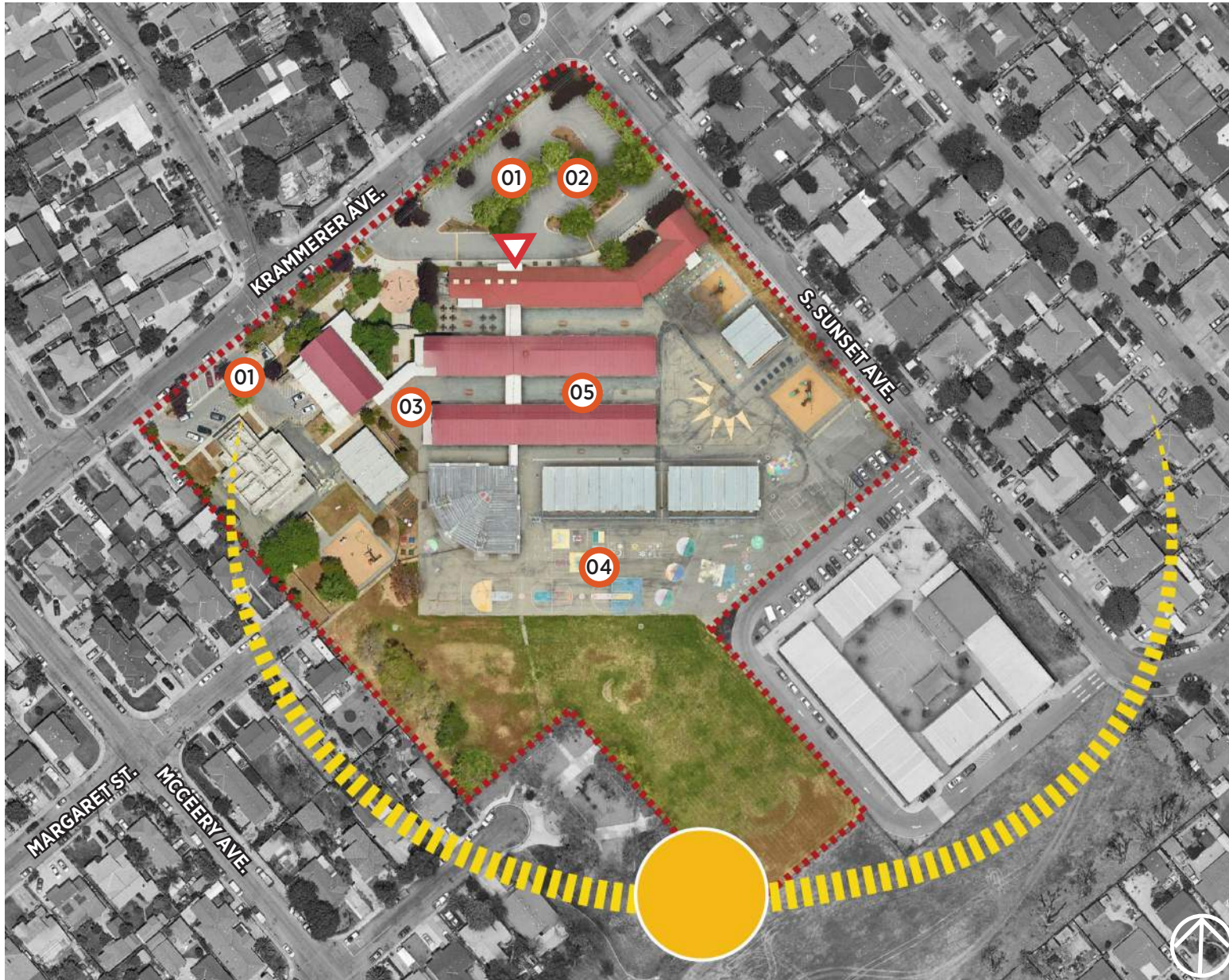
Immediate Concerns

What are your most **immediate concerns** regarding current facilities?

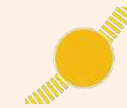
- More custodial support is needed.
- Additional parking is needed.
- Renovate secure perimeter fencing to avoid vandalism.
- More site lighting is needed.
- More security cameras are needed.
- The campus needs all buildings painted.
- Diaper changing stations are needed.
- Play areas need resurfacing, zoned to be age appropriate and inclusive.
- More combination bottle filling station/drinking fountains are needed.
- A dedicated parent lounge for parent support is needed.
- Roof repairs are needed.
- Classroom carpeting needs to be replaced.
- A Media Center (Library) is needed.

Outside-In and Inside Out

The following pages organize the questions that were asked at the visioning workshops into two categories: Outside In and Inside Out. Outside In items capture needs outside of the buildings. Inside Out items capture needs for the buildings and the interiors. Items are listed from macro level (larger needs) to micro level (details).



Outside In



Sun Path



Entry



The two parking lots are over capacity, causing issues with parents, staff, and the Kidango Program.



Additional parking and dedicated pick-up/drop-off loops are needed for full enrollment capacity in the future.



Some paved areas have flooding on rainy days.



Play areas need resurfacing and need to be zoned to be age appropriate.



Use areas between classroom finger buildings for outdoor learning with direct visual connections.



Inside Out



Kidango Program location



Entry

01

Admin office strives for inclusivity. It is easily accessible and welcoming to the public.

02

Students have adequate restrooms. The restrooms next to the classrooms don't get a lot of use.

04

The Cafeteria is used for gatherings.

Vision

The facility master plan for this campus will focus on the bullet point list of priorities synthesized from the workshop.

At the Town Hall Workshops, we will share highlights from the Ed Specs, this report deliverable and a proposed new site diagram. Town Hall participants will be engaged in an exercise in which they choose the top five priorities and add their comments to the boards.

- Add additional parking and improve drop-off and pick-up.
- Renovate perimeter fencing.
- Wayfinding and outdoor signage are needed to navigate through the school
- Play areas need resurfacing, zoned to be age appropriate and inclusive.
- More daylight for classrooms is needed.
- Add a new Media Resource Center (library).
- Add more staff restrooms if needed for the future.
- Community Resource Center to contain space to support programs such as lactation rooms with dedicated sinks are needed for community or staff to use and a dedicated parent lounge/safe space for parent support is needed.
- Add more site lighting.