



School Site Committee Visioning Workshop
December 8th, 2022 | 10:30 - 12:00pm

Vanessa Deans, Principal

Dorsa Elementary School Alum Rock Union School District





Community
Outreach

Next Steps:

LPA team will distribute the results of the Facility Condition Assessments (FCAs) to the school sites after the winter holiday. After that, LPA will incorporate the results of the FCAs and what we heard at this workshop to create the proposed new master plan to present at the Community Town Hall workshop in Mid-March and early April 2023. The week after the Town Hall meetings, we will meet with your Site Council Committee again to review the input with your group to finalize the diagrams before we do the cost estimating.

The Site Council Committee was oriented to understand what a master plan is and what Ed Specs are. Then highlights from the Ed Specs Visioning Workshop were shown, concluding with the draft guiding principle statement on the following page. After that, participants were asked a series of questions to draw out their ideas to improve the learning environments to support the mission and vision of Alum Rock USD.



Learning Shifts Focus on Student Empowerment- DRAFT

ARUSD's learning environments will support students' development of ***mind, body and spirit***. They will be empowered with the opportunity to try different ways of learning to discover how they learn best, ***find their spark*** and to ***keep the curiosity*** they were born with to become ***expert lifelong learners***. ARUSD will work to give students and families who need additional support to have an ***equal chance to thrive***, meeting all their needs.

EMPOWERING STUDENTS TO BECOME EXPERT LEARNERS

- Multi-sensory and multi-intelligences learning
- More control at the hands of the students
- Independent choice and/or collaborative elective periods
- Less teacher-directed time
- Students setting individual goals
- Student-driven activities
- Student-chosen schedules
- More independent work time
- Relaxation rooms
- No school uniforms

HIGHER COLLABORATION

- Team collaboration across studies, play, and extra-curricular activities
- Flexible and collaborative opportunities

EQUITY FOR STUDENTS AND THEIR FAMILIES

- Spaces to support personal and basic needs (i.e. laundry services)
- Full day kindergarten

MIND, BODY AND SPIRIT

- More outside and exploration time
- Play and naturalistic movement
- Bring community into the class
- Indoor and outdoor use spaces

Visioning Questions:

1. In general, what is your **overall impression** of the campus as it exists today? How do you think the community perceives the condition of the existing campus? Is Admin working well as a welcoming space? Restrooms?
2. How well do **traffic patterns** flow on and around the campus (both vehicular and pedestrian)?
3. Do you have any observations or concerns regarding **safety and security**?
4. Are **outdoor areas** currently being utilized for educational purposes?
5. Is there adequate **play area**? If not, what would improve the current conditions?
6. Where does the school **assemble** for school-wide functions, grade-wide functions and smaller group functions?
7. How well do your **current learning spaces** support your instructional delivery? Library/Media Resource Center? Other spaces such as Makerspace? STEM? STEAM Labs? Arts? Science? After-school programs?
8. What are your most **immediate concerns** regarding current facilities?

Participants were asked questions to draw out their ideas to improve the learning environments to support the mission and vision of Alum Rock USD.

1

Overall Impression

In general, what is your **overall impression** of the campus as it exists today? How do you think the community perceives the condition of the existing campus? Is Admin working well as a welcoming space? Restrooms?

- The community is tight knit, kids feel loved at this school and there is low teacher turnover.
- Spaces are well utilized, and teachers are grateful for the environments that they have.
- The positive neighborhood presence and safety of the school is visible to the community.
- The facility is older but is getting some repairs replacements, such as the HVAC units.
- The playground is outdated.
- Community members generally support the school even though the facilities are lacking.

2







Traffic Patterns

How well do **traffic patterns** flow on and around the campus (both vehicular and pedestrian)?

- Drop-off/pick-up lanes are too short which causes congestion.
- The school has on-site traffic coordination which helps to alleviate some of the congestion.
- Special Education has two buses which use the drop-off lane.
- There are no crossing guards but also low foot traffic.
- Students who walk to school enter at the sidewalk gates which are locked when school is in session.
- There is no visitor parking at Admin, only staff parking.
- The Kidango Program parking lot gate is locked at 8 am and is located at the back of the site.



Traffic patterns

-  Traffic Congestion
-  Pick-up/Drop-off Loops
-  Speed Bumps Needed
-  Entry
-  Gates
-  Staff parking



Traffic Patterns



Drop-off/pick-up lanes are too short which causes congestion.

3

Safety & Security

Do you have any observations or concerns regarding **safety and security**?

- The Admin should be made to be more welcoming to promote connection and feelings of safety.
- The front office features some preventative measures against unwelcome guests.
- Perimeter fencing is adequate with no visible defects, but it is too low.
- There has been vandalism of the property in the past, but it is not a large issue.
- More security cameras are needed for full campus coverage.



Safety & Security



Entry



Admin needs to be more welcoming.



Taller perimeter fence to prevent climbing over is needed.



Safety & Security



Admin needs to be more welcoming.



Safety & Security



Admin has minimal visibility to the outdoors.



Safety & Security



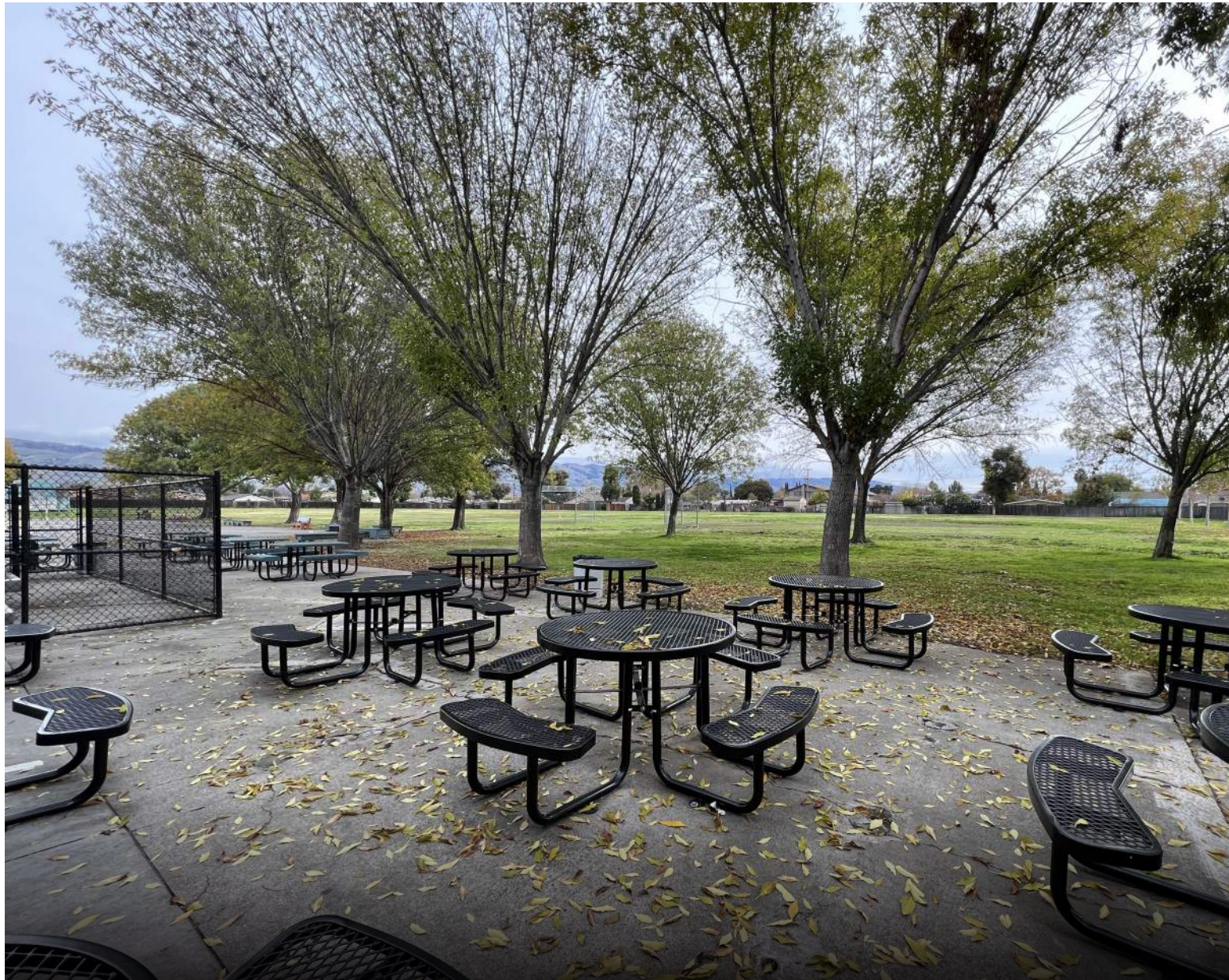
The entry gate is nice.

4

Outdoor Areas

Are **outdoor areas** currently being utilized for educational purposes?

- The outdoor eating area doesn't have a shade structure but is well shaded.
- Tables outside are used for outdoor work, social breaks and parent night.
- The field and blacktop areas are used for P.E. and the Little Heroes Program which have class game time, recess, 1:1 activities, and other sports like soccer.
- The space between B and C buildings is used a lot by older grades who are more trusted to work outside.
- 4th and 5th grade Special Day Class (SDC) classes use the garden near the Kidango rooms.
- Adaptive P.E. has equipment storage, but it is far from the class, on the cafeteria stage.



Outdoor Areas



The outdoor eating area doesn't have a shade structure but is well shaded.



Outdoor Areas



Outdoor areas between finger buildings are underutilized.



Outdoor Areas



4th and 5th grade Special Day Class (SDC) classes use the garden near the Kidango rooms.



Outdoor Areas



The field needs to be reseeded.

5

Play Areas

Is there adequate **play area**? If not, what would improve the current conditions?

- Two recesses take place, 1st-3rd grades, and 4th-5th grades.
- The Kindergarten play area is a separate space from other play areas.
- Play equipment on the campus is outdated.
- The blacktop area is well programmed but it needs to be re-surfaced.



Play Areas



*Play equipment on the campus
is outdated.*



Play Areas



The blacktop area is well programmed but it needs to be re-surfaced.

6

Assembly

Where does the school **assemble** for school-wide functions, grade-wide functions and smaller group functions?

- The cafeteria is used for assemblies but is in use for mealtimes until 1 pm and is not large enough for school-wide assemblies.
- There is a virtual, school-wide assembly every Friday.
- The Community Center is used for the Grail Family Services Program, monthly parent meetings, a quintet performance, and in person staff meetings. It has a bathroom, kitchen, and storage.
- The Community Center lacks heating.



Assembly



The cafeteria is used for assemblies but is in use for mealtimes until 1 pm and is not large enough for school-wide assemblies.



Outdoor Areas



The Community Center is used for the Grail Family Services Program, monthly parent meetings, a quintet performance, and in person staff meetings. It has a bathroom, kitchen, and storage.

7

Current Learning Spaces

How well do your **current learning spaces** support your instructional delivery? Library/ Media Resource Center? Other spaces such as Makerspace? STEM? STEAM Labs? Arts? Science? After school programs?

- An SEL yoga program will be coming soon to the school.
- There isn't a Makerspace on campus. Rooms L3 or C4 could be transformed into makerspaces.
- Neither science nor art programs have dedicated spaces.
- Band and music classes are in portables.
- The C building is an open schedule area.
- The stage in the cafeteria is used for some classes.
- Transitional Kindergarten rooms don't have restrooms.
- The library is used by TOSA (Teachers on Special Assignment) for English Language learners. Students check out books sometimes.

7

Current Learning Spaces

How well do your **current learning spaces** support your instructional delivery? Library/ Media Resource Center? Other spaces such as Makerspace? STEM? STEAM Labs? Arts? Science? After school programs?

- Rooms B1 and B2 are used for SDC and B5 is used for RSP.
- A portable is used for the P.M. program and assessments outside of TK and K hours.
- TK rooms don't have restrooms.
- The Kidango Program is housed in (3) portables off their parking lot at the back of campus.
- Students charge their devices at home, but there are loaners available at school if they need them.



Current Learning Environments



The C building is an open schedule area.



Current Learning Environments



The stage in the cafeteria is used for some classes.



Current Learning Environments



The library is used by TOSA for English Language learners.



Current Learning Environments



Kinder classrooms.

8

Immediate Concerns

What are your most **immediate concerns** regarding current facilities?

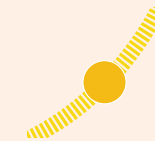
- Perimeter fencing is adequate but needs to be replaced with higher fencing.
- More security cameras are needed for full campus coverage.
- There is a need for more restrooms, especially staff restrooms.
- TK and K classrooms rooms need restrooms directly connected to the classrooms.
- The Community Center lacks heating.
- Makerspaces are needed.
- The play equipment needs to be replaced.
- A sensory room and wellness space for students is needed.
- Blacktops are well programmed but need to be resurfaced.
- The field needs to be reseeded.

Outside-In and Inside Out

The following pages organize the questions that were asked at the visioning workshops into two categories: Outside In and Inside Out. Outside In items capture needs outside of the buildings. Inside Out items capture needs for the buildings and the interiors. Items are listed from macro level (larger needs) to micro level (details).



Outside In



Sun Path



Entry



Drop-off and pick-up lanes are too short which causes congestion.



Staff parking (there is no visitor parking).



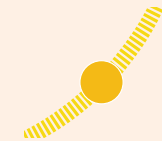
The blacktop area is used for P.E. and the Little Heroes Program (needs re-surfacing)



The Kindergarten play area is separate.



Outside In



Sun Path



Entry



The outdoor eating area doesn't have a shade structure but is well shaded.



The space between B and C buildings is used a lot by Grades 4 and 5 for outdoor learning.



4th and 5th grade Special Day Class (SDC) classes use the garden near the Kidango rooms.



Inside Out



Entry



The Admin should be made to be more welcoming to promote connection and feelings of safety.



The Community Center has a kitchen, restrooms and storage and is used for gatherings to support multiple programs.



TK and K need to be expanded to add restrooms directly connected to their classrooms.



The cafeteria is used for assemblies, but too small for school-wide. The stage is used for some classes.



Inside Out



Entry



The library is used for ELL students and checking out books.



The C building is an open schedule area.



Adaptive P.E. has equipment storage, but it is far from the class, on the cafeteria stage.



The P.M. program and assessments take place in portables.



Kidango uses three portables at the back of campus.

Vision

The facility master plan for this campus will focus on the bullet point list of priorities synthesized from the workshop.

At the Town Hall Workshops, we will share highlights from the Ed Specs, this report deliverable and a proposed new site diagram. Town Hall participants will be engaged in an exercise in which they choose the top five priorities and add their comments to the boards.

- Improve campus security on the perimeter.
- Improve sight lines for supervision.
- Improve Drop off and Pickup .
- Replace portables .
- Modernize Existing Buildings for equity campus-wide.
- Transform and expand Admin into a Welcoming Entry with higher security.
- Optimize the outdoors to create purposeful outdoor learning spaces and to support physical and mental wellness.
- Create functional outdoor all school assembly area to also use for community events.
- Dedicate an MPR or Gym for indoor assemblies, after hour events and P.E., keeping one MPR for the two breakfasts and multiple lunch sessions.
- Flex labs to support after school programs, the arts, and makerspace for STEAM.
- Renovate the teachers lounge and create teacher collaboration workrooms so they can better support students.
- Dedicated storage in rooms or adjacent to them.