



School Site Committee Visioning Workshop  
January 11th, 2023 | 10:30 - 12:00pm

Joseph Manluco, Principal

## Ben Painter Elementary Alum Rock Union School District





Community  
Outreach

## Next Steps:

LPA team will distribute the results of the Facility Condition Assessments (FCAs) to the school sites after the winter holiday. After that, LPA will incorporate the results of the FCAs and what we heard at this workshop to create the proposed new master plan to present at the Community Town Hall workshop in Mid-March and early April 2023. The week after the Town Hall meetings, we will meet with your Site Council Committee again to review the input with your group to finalize the diagrams before we do the cost estimating.

*The Site Council Committee was oriented to understand what a master plan is and what Ed Specs are. Then highlights from the Ed Specs Visioning Workshop were shown, concluding with the draft guiding principle statement on the following page. After that, participants were asked a series of questions to draw out their ideas to improve the learning environments to support the mission and vision of Alum Rock USD.*





# Learning Shifts Focus on Student Empowerment- DRAFT

ARUSD's learning environments will support students' development of ***mind, body and spirit***. They will be empowered with the opportunity to try different ways of learning to discover how they learn best, ***find their spark*** and to ***keep the curiosity*** they were born with to become ***expert lifelong learners***. ARUSD will work to give students and families who need additional support to have an ***equal chance to thrive***, meeting all their needs.

## EMPOWERING STUDENTS TO BECOME EXPERT LEARNERS

- Multi-sensory and multi-intelligences learning
- More control at the hands of the students
- Independent choice and/or collaborative elective periods
- Less teacher-directed time
- Students setting individual goals
- Student-driven activities
- Student-chosen schedules
- More independent work time
- Relaxation rooms
- No school uniforms

## HIGHER COLLABORATION

- Team collaboration across studies, play, and extra-curricular activities
- Flexible and collaborative opportunities

## EQUITY FOR STUDENTS AND THEIR FAMILIES

- Spaces to support personal and basic needs (i.e. laundry services)
- Full day kindergarten

## MIND, BODY AND SPIRIT

- More outside and exploration time
- Play and naturalistic movement
- Bring community into the class
- Indoor and outdoor use spaces

# Visioning Questions:

1. In general, what is your **overall impression** of the campus as it exists today? How do you think the community perceives the condition of the existing campus? Is Admin working well as a welcoming space? Restrooms?
2. How well do **traffic patterns** flow on and around the campus (both vehicular and pedestrian)?
3. Do you have any observations or concerns regarding **safety and security**?
4. Are **outdoor areas** currently being utilized for educational purposes?
5. Is there adequate **play area**? If not, what would improve the current conditions?
6. Where does the school **assemble** for school-wide functions, grade-wide functions and smaller group functions?
7. How well do your **current learning spaces** support your instructional delivery? Library/Media Resource Center? Other spaces such as Makerspace? STEM? STEAM Labs? Arts? Science? After-school programs?
8. What are your most **immediate concerns** regarding current facilities?

*Participants were asked questions to draw out their ideas to improve the learning environments to support the mission and vision of Alum Rock USD.*

# 1

## Overall Impression

In general, what is your **overall impression** of the campus as it exists today? How do you think the community perceives the condition of the existing campus? Is Admin working well as a welcoming space? Restrooms?

- The community is concerned about campus security. More security cameras and gates upgrades are needed.
- The community feels the campus needs to be upgraded and more learning spaces for all programs. The campus is outdated and needs a lot of repair and replacement work.
- The community is happy with the current programs and curriculum, especially the Vietnamese dual immersion program).
- The 30 to 40 year-old portables are deteriorating and need to be replaced.
- Admin is hard to find. The overall environment feels unwelcoming.
- Currently there is one Admin restroom on campus. Additional staff restrooms are needed.
- The nurse needs a dedicated restroom that is easily visible and accessible to students.

# 1

## Overall Impression

In general, what is your **overall impression** of the campus as it exists today? How do you think the community perceives the condition of the existing campus? Is Admin working well as a welcoming space? Restrooms?

- TK currently shares restrooms with older students which can make them feel uncomfortable.
- There is no warm water at sinks which can discourage students from washing their hands.
- Additional designated flexible space is required for campus programs and activities. Currently there is only one designated space.
- Additional storage is needed to clear out under-used spaces to use them for learning instead of storage.
- More preventative maintenance is needed.



## Overall Impression



*The 30 to 40 year-old portables are deteriorating and need to be replaced.*





## Overall Impression



*Admin is hard to find. The overall environment feels unwelcoming.*



# 2

## Traffic Patterns

How well do **traffic patterns** flow on and around the campus (both vehicular and pedestrian)?

- Parking is inadequate.
- Poor vehicular circulation for pick-up/drop-off. Campus needs a dedicated drop-off loop.
- This is a commuter school (students travel from outside communities) with large attendance in the Vietnamese Immersion Program (VIP).
- Traffic congestion is exacerbated by the adjacency with Sheppard Middle School (900 students between the two schools).
- Rough and Ready St. has heavy traffic. Pedestrians can often be seen crossing in multiple locations. Preventive safety measures such as more crosswalks, speed bumps and signage are needed.
- The 3-way stop intersection with heavy traffic in each direction does not have crossing guards and ADA crossing signage which are needed.



## Traffic patterns

- Traffic Congestion
- Pick-up/Drop-off Loops
- Speed Bumps Needed
- Entry
- 01 Parking is inadequate.
- 02 Poor circulation for pick-up and drop-offs. Campus needs a dedicated drop-off loop.
- 03 Rough and Ready St. has heavy traffic. Pedestrians can often be seen crossing in multiple locations.
- 04 The 3-way stop intersection with heavy traffic in each direction does not have crossing guards and ADA crossing signage which are needed.

# 3

## Safety & Security

Do you have any observations or concerns regarding **safety and security**?

- Kindergarten is easily accessible and visible from the parking lots and street.
- More security cameras are needed.
- Admin is hard to find and needs to be the single point of entry.
- Gates need to be upgraded.
- Perimeter fencing needs to be upgraded.
- The parking lot off Rough and Ready Rd. needs to be secured better.
- The Little League has a school agreement to allow the team's buses to access the school parking lot along Patt Ave. The parking lot is narrow and tight for the buses. A designated bus turn out is needed for loading.





## Safety & Security



Entry

01

Kindergarten department is easily accessible and visible from the parking lots and street.

02

Admin is hard to find and needs to be the single point of entry.

03

Gates need to be upgraded. Perimeter fencing needs to be upgraded.

04

The parking lot off Rough and Ready Rd. needs to be secured better.

05

The Little League has a school agreement to allow the team's buses to access the school parking lot along Patt Ave.





## Safety & Security



*Kindergarten needs screening  
from the parking lot and street.*





## Safety & Security



*The parking lot off Rough and Ready Rd. needs to be secured better.*



# 4

## Outdoor Areas

Are **outdoor areas** currently being utilized for educational purposes?

- The outdoor courtyards and corridors are underused for learning, movement, and social interaction.
- The campus lacks outdoor seating.
- Hard courts are used a lot during recess, lunch, and before and after school activities. They need re-striping for games and activities.
- The fields need to be repaired.
- During the rainy season, certain areas become muddy and slippery.
- Rainwater puddles below the edge of the portable classrooms.
- Some outdoor areas such as the kickball area are lacking a clear line of sight for supervision.
- The school garden is inaccessible and is only being used by the Community Liaison.



# Outdoor Areas



*The outdoor courtyards are under-used and have potential to be transformed to support outdoor learning.*





## Outdoor Areas



*The campus needs additional outdoor seating to accommodate the whole student body for assemblies.*





## Outdoor Areas



*Restriping the hardcourts can help refresh the outside play area.*





## Outdoor Areas



*Some outdoor areas such as the kickball area are lacking a clear line of sight for supervision.*





## Outdoor Areas



*During the rainy season, rainwater accumulates below the edge of the portable classrooms.*



# 5

## Play Areas

Is there adequate **play area**? If not, what would improve the current conditions?

- The play equipment for Grades 1-5 is hidden behind the futsal court and need a clear line of sight for super-vision.
- Play structures lack shade structures to protect from the elements. There is no outdoor play area for rainy days and very minimal indoor space for play.
- The futsal court is a favorite place for many students and is well-maintained.
- Kinder play equipment is good, but more is needed to support the number of students.

# 6

## Assembly

Where does the school **assemble** for school-wide functions, grade-wide functions and smaller group functions?

- The cafeteria is shared with Sheppard MS, creating a challenge in scheduling assemblies and other activities. It is too small for large assemblies.
- Room 27 is flexible and used for collaboration and professional development. A better room is needed for these activities and professional development.

# 7

## Current Learning Spaces

How well do your **current learning spaces** support your instructional delivery? Library/ Media Resource Center? Other spaces such as Makerspace? STEM? STEAM Labs? Arts? Science? After school programs?

- About half the classrooms are permanent construction and half are portables which is not equitable.
- All arts and sciences need dedicated learning environments. They share rooms with not enough storage.
- A dedicated STEM room is needed.
- Classroom furniture needs to be upgraded to be lightweight and mobile to support 21st century learning.
- The library is used as a storage space and for counseling. Counseling needs a dedicated room.
- Additional storage is needed to clear out under-used spaces to use them for learning instead of storage.
- Interior finishes need to be refreshed.
- Classroom technology needs to be upgraded.





## Current Learning Environments



*All arts and sciences should have their own dedicated classroom. Currently rooms are being shared making it hard to store their equipment.*





## Current Learning Environments



*Classroom furniture needs to be upgraded to be lightweight and mobile to support 21st century learning.*





## Current Learning Spaces



*The library is used as a storage space and for counseling. Counseling needs a dedicated room.*





## Current Learning Environments



*Additional storage is needed.*





## Current Learning Environments



*Interior finishes need to be refreshed.*



# 8

## Immediate Concerns

What are your most **immediate concerns** regarding current facilities?

- There is a concern the Family Resource Center contract with Santa Clara County Office of Education will expire at the end of 2024.
- Kindergarten is easily accessible and visible from the parking lots and street.
- Provide Kindergarten bathrooms directly connected to their classrooms.
- More security cameras are needed.
- Admin is hard to find and needs to be the single point of entry.
- Gates need to be upgraded.
- Perimeter fencing needs to be upgraded.
- The parking lot off Rough and Ready Rd. needs to be secured better.
- Site-wide plumbing requires regular maintenance and lack of warm water in some buildings.
- Rainwater puddles below the edge of the portable classrooms.
- Ramps leading to portables rooms require maintenance from wear and tear
- Replace portable classrooms.

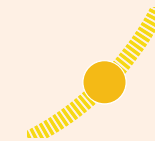
# Outside-In and Inside Out

*The following pages organize the questions that were asked at the visioning workshops into two categories: Outside In and Inside Out. Outside In items capture needs outside of the buildings. Inside Out items capture needs for the buildings and the interiors. Items are listed from macro level (larger needs) to micro level (details).*





## Outside In



Sun Path



Entry



Parking is inadequate.



Drop/off pick up isn't working well. A dedicated loop or turn-out is needed.



Little League bus-loading zone on Patt Ave. is too narrow.



Kindergarten is too visible from the parking lots and street and needs more play equipment.

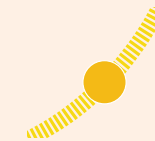


Outdoor play areas such as kickball and play structures need improved lines of sight for supervision.





# Outside In



Sun Path



Entry



The school garden is inaccessible and is only being used by the Community Liaison.



Play structures lack shade structures to protect from the elements.



The futsal court is a favorite place for many students and is well-maintained.



Rainwater puddles below the edge of the portable classrooms.





# Inside Out



Entry



Portables need to be replaced. About half the classrooms are permanent and half are portables.



Admin is hard to find. The overall environment feels unwelcoming.



TK currently shares restrooms with older students which can make them feel uncomfortable.



The cafeteria is shared with Sheppard MS, creating a challenge in scheduling assemblies and other activities. It is too small for large assemblies.





# Inside Out



Entry



Room 27 is a makeshift flexible space used for collaboration and professional development.



The library is used as a storage space and for counseling. Counseling needs a dedicated room.



Additional storage is needed to clear out under-used spaces to use them for learning instead of storage.



# Vision

*The facility master plan for this campus will focus on the bullet point list of priorities synthesized from the workshop.*

*At the Town Hall Workshops, we will share highlights from the Ed Specs, this report deliverable and a proposed new site diagram. Town Hall participants will be engaged in an exercise in which they choose the top five priorities and add their comments to the boards.*

- Perimeter fencing needs to be upgraded.
- Refresh buildings and landscape to create a child friendly positive learning environment.
- Remove portables.
- A dedicated drop-off loop or turn-out is needed to improve vehicular congestion.
- Little League needs a wide bus drop off zone along Patt Ave.
- Add trees and shade structures to play and gathering areas to protect from the elements.
- Use areas between classroom finger buildings for outdoor learning with direct visual connections.
- Expand the existing classroom size by combining adjacent classrooms or creating Commons areas in between pairs of classrooms to extend the footprint.
- A gathering space for school-wide assemblies is needed.
- Screen off Kindergarten from being visible from the parking lots and street.
- Expand the kindergarten play area and add more equipment.
- The outdoor courtyards and corridors are under-utilized as learning and relaxation spaces.
- Improve outdoor play areas to have clear lines of sight for supervision.
- Make the school garden more accessible to students.
- New Flex Gym to use for school-wide assemblies, rainy day PE, and community events.
- New Community Resource Center to include a professional development room that can be a shared re-source for any collaborative group activities. The center can include offices for counseling.
- New Flex lab for art and science.
- New STEM Lab.
- Additional storage is needed to clear out under-used spaces to use them for learning instead of storage
- Upgrade classroom furniture and technology.