



School Site Committee Visioning Workshop
December 8th, 2022 | 2:00 - 3:30pm

Sandra Sarmiento, Principal
Olga Martinez, Vice Principal

Hubbard Media Arts Academy Alum Rock Union School District





Community
Outreach

Next Steps:

LPA team will distribute the results of the Facility Condition Assessments (FCAs) to the school sites after the winter holiday. After that, LPA will incorporate the results of the FCAs and what we heard at this workshop to create the proposed new master plan to present at the Community Town Hall workshop in Mid-March and early April 2023. The week after the Town Hall meetings, we will meet with your Site Council Committee again to review the input with your group to finalize the diagrams before we do the cost estimating.

The Site Council Committee was oriented to understand what a master plan is and what Ed Specs are. Then highlights from the Ed Specs Visioning Workshop were shown, concluding with the draft guiding principle statement on the following page. After that, participants were asked a series of questions to draw out their ideas to improve the learning environments to support the mission and vision of Alum Rock USD.



Learning Shifts Focus on Student Empowerment- DRAFT

ARUSD's learning environments will support students' development of ***mind, body and spirit***. They will be empowered with the opportunity to try different ways of learning to discover how they learn best, ***find their spark*** and to ***keep the curiosity*** they were born with to become ***expert lifelong learners***. ARUSD will work to give students and families who need additional support to have an ***equal chance to thrive***, meeting all their needs.

EMPOWERING STUDENTS TO BECOME EXPERT LEARNERS

- Multi-sensory and multi-intelligences learning
- More control at the hands of the students
- Independent choice and/or collaborative elective periods
- Less teacher-directed time
- Students setting individual goals
- Student-driven activities
- Student-chosen schedules
- More independent work time
- Relaxation rooms
- No school uniforms

HIGHER COLLABORATION

- Team collaboration across studies, play, and extra-curricular activities
- Flexible and collaborative opportunities

EQUITY FOR STUDENTS AND THEIR FAMILIES

- Spaces to support personal and basic needs (i.e. laundry services)
- Full day kindergarten

MIND, BODY AND SPIRIT

- More outside and exploration time
- Play and naturalistic movement
- Bring community into the class
- Indoor and outdoor use spaces

Visioning Questions:

1. In general, what is your **overall impression** of the campus as it exists today? How do you think the community perceives the condition of the existing campus? Is Admin working well as a welcoming space? Restrooms?
2. How well do **traffic patterns** flow on and around the campus (both vehicular and pedestrian)?
3. Do you have any observations or concerns regarding **safety and security**?
4. Are **outdoor areas** currently being utilized for educational purposes?
5. Is there adequate **play area**? If not, what would improve the current conditions?
6. Where does the school **assemble** for school-wide functions, grade-wide functions and smaller group functions?
7. How well do your **current learning spaces** support your instructional delivery? Library/Media Resource Center? Other spaces such as Makerspace? STEM? STEAM Labs? Arts? Science? After-school programs?
8. Are there adequate outdoor spaces for **P.E. and Athletics**?
9. What are your most **immediate concerns** regarding current facilities?

Participants were asked questions to draw out their ideas to improve the learning environments to support the mission and vision of Alum Rock USD.

1

Overall Impression

In general, what is your **overall impression** of the campus as it exists today? How do you think the community perceives the condition of the existing campus? Is Admin working well as a welcoming space? Restrooms?

- The school itself does not feel welcoming. The cold, dark, uninspiring gray color makes students feel unmotivated. People perceive the environment as the neediest community.
- The Social Emotional Learning (S.E.L.) Department is currently collecting counseling specific data related to any trauma or crisis. Within the last 3 weeks, the school has had 5 newcomers from Colombia.
- The physical space is outdated, but the school is still in the process of figuring out who they are. Their goal is to try to recreate a lost connection between students and teachers caused by the pandemic.
- The administration building, located along Kammerer Avenue, functions adequately but is not the most inviting to the public. To access the admin building, students must exit campus and come through the front door.

1

Overall Impression

In general, what is your **overall impression** of the campus as it exists today? How do you think the community perceives the condition of the existing campus? Is Admin working well as a welcoming space? Restrooms?

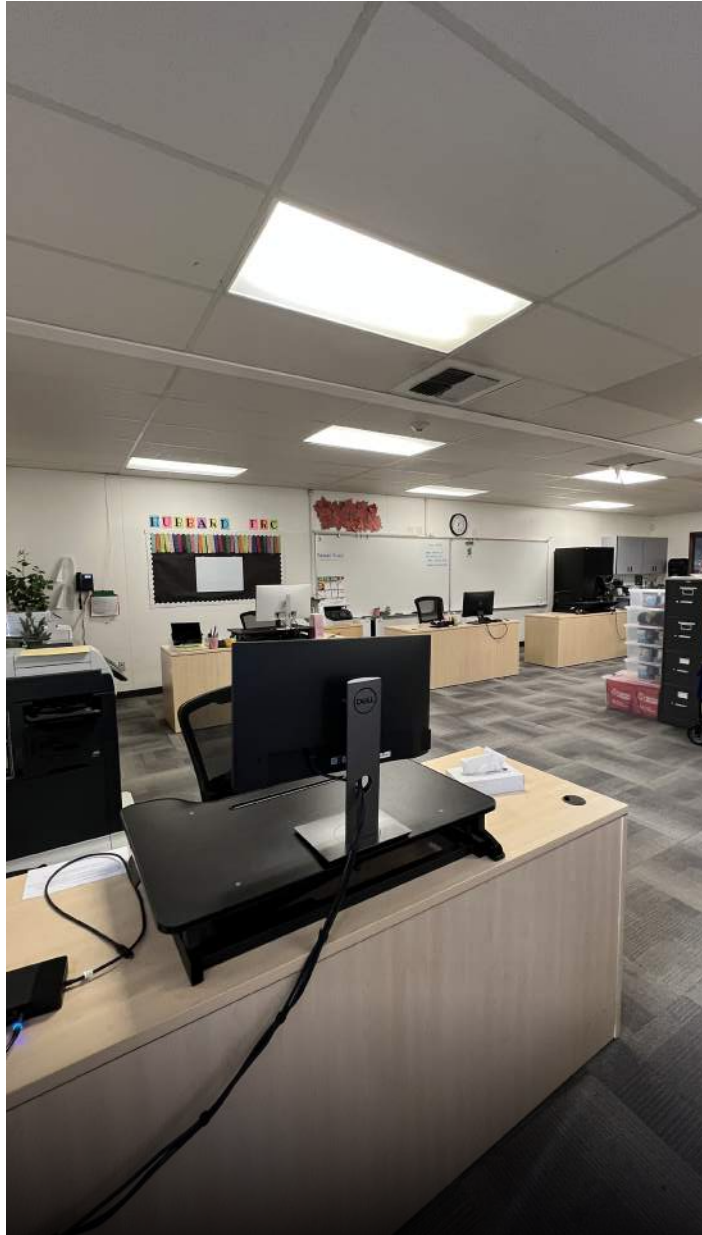
- The community has a positive impression of the campus.
- There is a Family Resource Center on site in a portable on the north side of campus which is a good location, but it would be ideal to remove and replace portables with permanent construction.
- The campus is very nice compared to the rest of ARUSD with noticeable updates.
- The campus is very large filling a whole block which causes the supervision to be spread out.
- The front office is ample, welcoming, easy to find with good lines of sight.
- The parking and traffic flow works well.
- Middle School is portables and there are not enough. They need to be replaced and augmented with permanent construction.
- There are safety concerns for an emergency situation with the intercom systems being separate between Middle School and Elementary School.



Overall Impression



The front office is very welcoming.



Assembly



There is a Family Resource Center on site in a portable.



Overall Impression



Because the campus is so large, there are many blind spots in the play area.

2




Traffic Patterns

How well do **traffic patterns** flow on and around the campus (both vehicular and pedestrian)?

- There is some congestion at the Elementary School drop-off and pick-up lane.
- The traffic backs up primarily at the kindergarten side during drop-off and pick-up time.
- There is about a 50/50 ratio of students who walk vs. get dropped off.
- Middle School has a separate gate for dismissal.
- There are (3) Special Education buses which use the main entrance lane.
- The back parking lot is staff and the Family Resource Center.



Traffic patterns

-  Traffic Congestion
-  Pick-up/Drop-off Loops
-  Speed Bumps Needed



Entry

01 Kindergarten pick-up.

02 Kidango entry gate.

03 Pedestrian gates.

04 Staff lot.

3

Safety & Security

Do you have any observations or concerns regarding **safety and security**?

- The perimeter wrought iron fencing works well.
- Windows at back buildings can be broken into due to the awning design at the bottom.
- ES and MS intercoms need to be connected.
- Lighting placement is adequate.
- There are (3) cameras on campus, one at the front office, one at the soccer pitch, and one at the middle school facing the field.
- The Kindergarten area needs cameras.
- Older building wings at the back of the site near the secret garden need cameras.
- The Middle School Restroom needs cameras at the exterior.



Safety & Security



Entry



Windows at back buildings can be broken into due to the awning design at the bottom.



There are (3) cameras on campus, one at the front office, one at the soccer pitch, and one at the middle school facing the field.



The Kindergarten area needs cameras.



Older building wings at the back of the site near the secret garden need cameras.



The Middle School Restroom needs cameras at the exterior.

4

Outdoor Areas

Are **outdoor areas** currently being utilized for educational purposes?

- Some areas are used for outdoor learning, but not many.
- There is a lack of shade.
- The courtyards of the old wings are under-utilized.
- The “secret garden” has a pergola and garden boxes.
- There is a small, shaded space off of the admin building by the field used for snack time and relaxing.



Outdoor Areas



*There are many opportunities
for outdoor learning spaces.*



Outdoor Areas



There is a small, shaded space off of the admin building by the field used for snack time and relaxing.



Outdoor Areas



There is a “secret garden” but it needs maintenance.

5

Play Areas

Is there adequate **play area**? If not, what would improve the current conditions?

- There is a lack of shaded play areas.
- Extra benches have been great, especially for middle schoolers.
- Early ES grades and MS has overlapping recess times.
- Designated play areas are nice.



Play Areas



The futsal court can serve as an example for other schools in the district.



Play Areas



Designated play areas are nice.

6

Assembly

Where does the school **assemble** for school-wide functions, grade-wide functions and smaller group functions?

- The classrooms support Media Arts but lack space and technology.
- One Kindergarten class is in a portable with no restroom.
- One portable has been converted to a Verizon Innovative Lab.
- The library is not used during the day, only for PM programs.
- Rooms B4 and A9 are used for arts, storage, and a future media room during the day.
- Room B5 hosts a P.M. “Think Together” program.
- Rooms E1 and E2 are county classrooms.



Assembly



The cafeteria is very small and holds smaller gatherings but not all-school gatherings.



Assembly



The Cafeteria stage, curtains, screen, etc. work well.



Assembly



There is already a shaded lunch structure.

7

Current Learning Spaces

How well do your **current learning spaces** support your instructional delivery? Library/Media Resource Center? Other spaces such as Makerspace? STEM? STEAM Labs? Arts? Science? After school programs?

- The classrooms support Media Arts but lack space and technology.
- One Kindergarten class is in a portable with no restroom.
- One portable has been converted to a Verizon Innovative Lab.
- The library is not used during the day, only for PM programs.
- Rooms B4 and A9 are used for arts, storage, and a future media room during the day.
- Room B5 hosts a P.M. “Think Together” program.
- Rooms E1 and E2 are county classrooms.



Current Learning Environments



One portable has been converted to a Verizon Innovative Lab.



Current Learning Environments



There are a lot of portable classrooms.



Current Learning Environments



The library is not used during the day, only for PM programs.

8

P.E. and Athletics

Are there adequate outdoor spaces for **P.E. and Athletics**?

- The soccer pitch is used a lot by students and is one of their favorite places.
- There is no gym.
- There are no locker rooms or restrooms, so nowhere to change clothes.
- Storage is needed for equipment.
- Adaptive P.E. commutes for special 1-on-1 classes.



P.E. and Athletics



The soccer pitch is used a lot by students and is one of their favorite places.

9

Immediate Concerns

What are your most **immediate concerns** regarding current facilities?

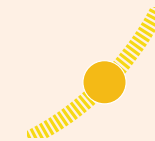
- A Media Resource Center is needed.
- A Wellness Center or Sensory Room is needed for school-wide use.
- Bathrooms for Kindergarten room at the front of the site are needed.
- New construction for restrooms and locker rooms for Middle School is a critical need.
- The P.A. system and cameras need updating.

Outside-In and Inside Out

The following pages organize the questions that were asked at the visioning workshops into two categories: Outside In and Inside Out. Outside In items capture needs outside of the buildings. Inside Out items capture needs for the buildings and the interiors. Items are listed from macro level (larger needs) to micro level (details).



Outside In



Sun Path



Entry



The parking and traffic flow works well.



The campus is very large which causes a challenge to need more site supervision spread out.



The quad is used for larger gatherings.



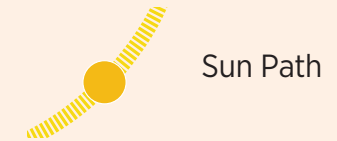
Some areas are used for outdoor learning.



There is a lack of shade for play areas.



Outside In



Sun Path



Entry



There is a small, shaded space used for snack time and relaxing.



The “secret garden” has a pergola and garden boxes.



The soccer pitch is used a lot by students and is one of their favorite places.



Inside Out



Entry



The front office is ample, welcoming, easy to find with good lines of sight.



The cafeteria is very small and holds smaller gatherings.



The family resource center is in a good location but is in a portable.



The library is not used during the day, only for P.M. programs.



Inside Out



Entry



Rooms B4 and A9 are used for arts, storage, and a future media room during the day.



Neither Kindergarten nor Middle School have adequate restrooms.



Adaptive P.E. commutes for special 1-on-1 classes.

Vision

The facility master plan for this campus will focus on the bullet point list of priorities synthesized from the workshop.

At the Town Hall Workshops, we will share highlights from the Ed Specs, this report deliverable and a proposed new site diagram. Town Hall participants will be engaged in an exercise in which they choose the top five priorities and add their comments to the boards.

- Improve Kindergarten and Elementary School drop-off and pick-up.
- Maintain the front office as it works well.
- Improve campus sight lines for supervision.
- Provide a larger indoor gathering space, like a Flex Gym that can also be used for events.
- Add a Media Resource Center that can be used all day.
- Add a Wellness Center or Sensory Room for school-wide use.
- Maintain the location of the Family Resource Center but make it permanent construction.
- Renovate classrooms and upgrade technology to support Media Arts.
- Provide more spaces for outdoor learning with the proper infrastructure.
- Zone play areas to provide students with age appropriate equipment.
- Add shade over play structures.
- Maintain small, shaded spaces and add more for students to get their energy out or relax.
- Maintain the “secret garden”.
- Add more storage for equipment.
- Add cameras for full campus coverage.
- Update the P.A. system.