



Student Assignment Planning (SAP) Community Discovery Tour

Agenda



1 Student Assignment
Project Overview

2 Historic Board Vote

3 New School

4 PreK Programs
Data

5 SAP Next Steps

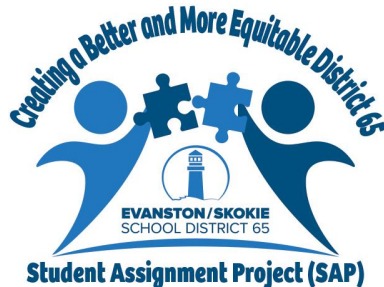
6 Your Thoughts

SAP PHASE 1

VOTE

SAP Phase Once Synopsis

- ✓ In spring 2021, District 65 embarked on a multi-year process to develop a comprehensive Student Assignment Plan (SAP) in order to modernize its structure and address historic inequities that continue to most significantly impact students of color.
- ✓ The District had not reviewed attendance boundaries holistically or recommended changes in nearly 30 years.
- ✓ The SAP Committee, comprised of a diverse team of D65 staff, parents/caregivers, community members and consulting experts, reviewed District 65's student assignment system using existing data and an interactive student assignments tool developed by Northwestern University to create over 50 new boundary scenarios.
- ✓ After over a year of robust community engagement and committee planning, on March 14, 2022, the Board approved a new Student Assignment Plan and a funding plan to build a school in Evanston's Fifth Ward.



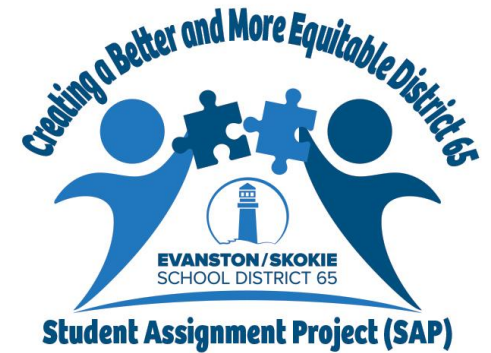
2022 Approved Changes

Boundary Lines

- ✓ Construction of a 5th Ward School (K-8)
- ✓ Bessie Rhodes school co-located on the 5th Ward campus (magnet school within a school)
- ✓ Elementary and Middle School Boundary Revisions
- ✓ No change to overall middle school feeder pattern (with exception of 5th ward school).

Programming

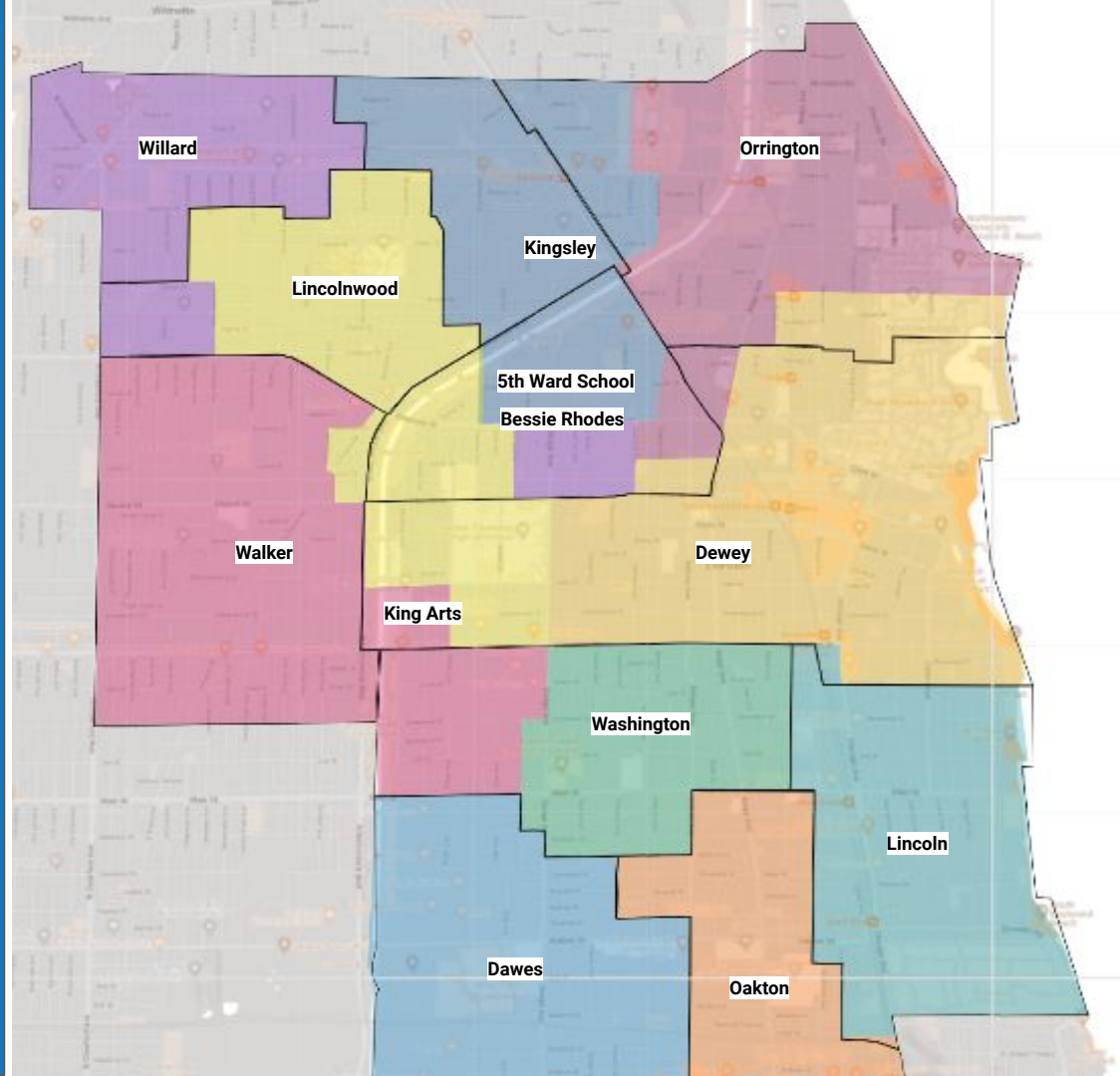
- ✓ Currently underway



New Elementary Boundaries Map

As early as 2025-26

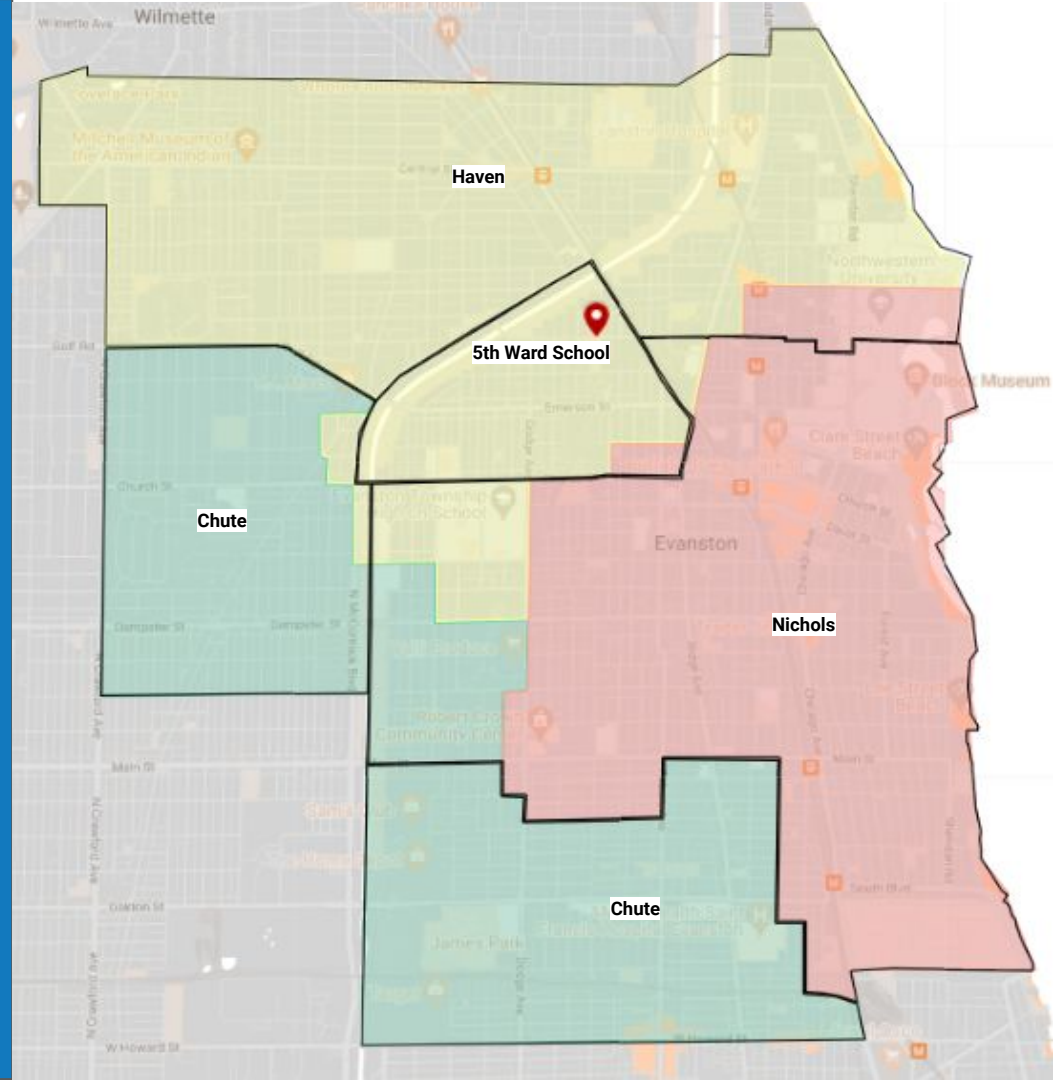
Interactive map on the SAP
website here



New Middle School Boundaries Map

As early as 2025-26

Interactive map on the SAP
website here



NEW 5th Ward **SCHOOL**

D65 5th Ward School Plan



- Open a K-8 school in the 5th ward
- School will serve the Bessie Rhodes Magnet program
- 5th ward community input on programming, shared space, and naming
- Opening as early as the 2025 school year

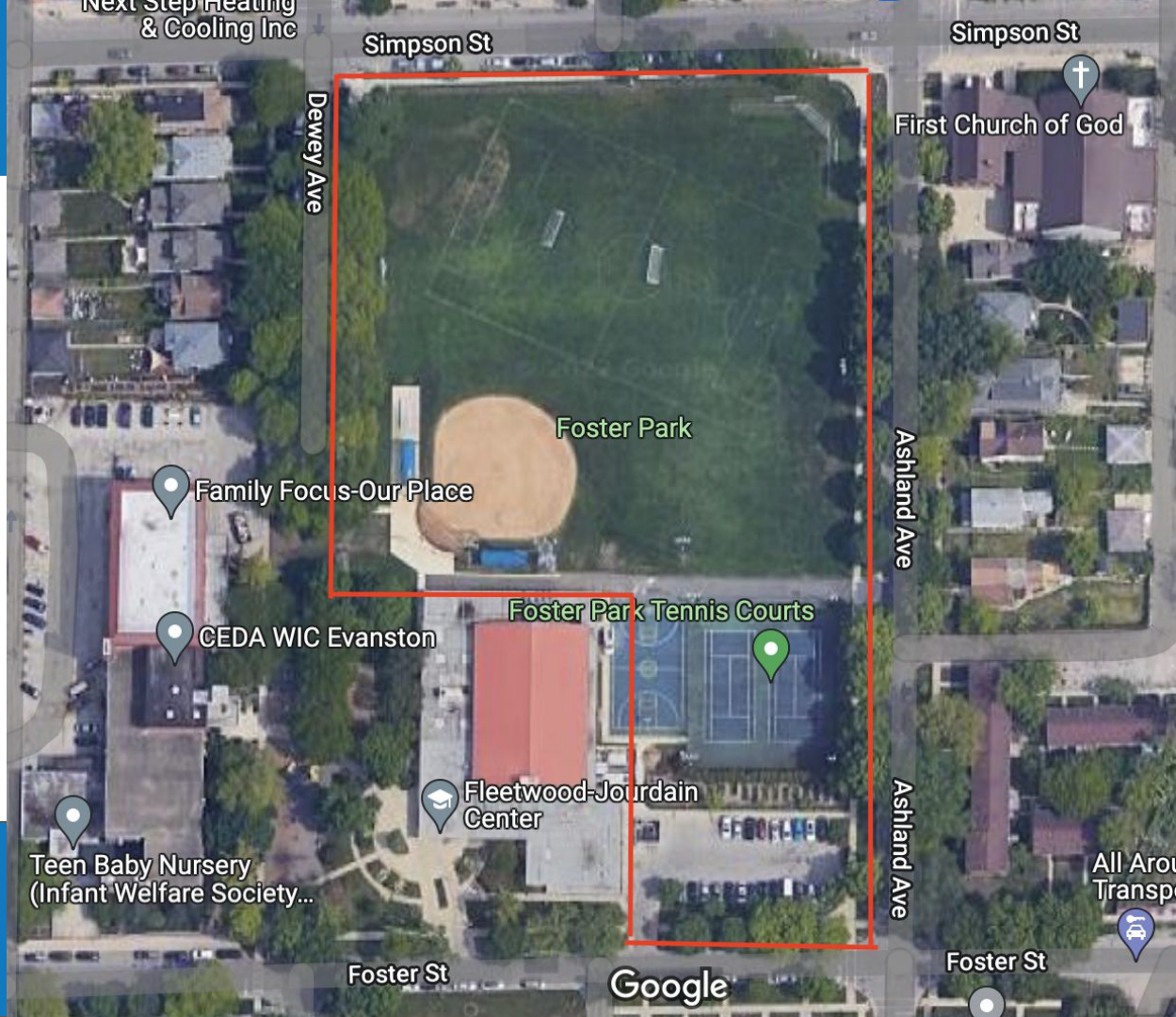
Build time is 18-24 months



Foster School

Location

- D65 owns property in the 5th ward
- Working with the City of Evanston to preserve green space and review architecture renderings
- 118k square foot building



PreK Programs **AND DATA**

PreK Programs in Evanston



Incoming kindergarten students come from over 30 different preschools in Evanston and surrounding areas

A Step by Step Learning Academy
Barboreaux School
Bright Horizons
Cherry Preschool
Childtime
Covenant Preschool
Evanston Early Childhood Council
Evanston Township High School
Daycare
Howard Area Family Center

Howard Area Family Center
Infant Welfare Society
JEH
Kindercare
Kingsway Preparatory School
Learning Bridge (Formerly The
Child Care Center of Evanston)
McGaw YMCA
Mosaic Early Childhood Center
Oakton Community College ECE

Oakton Community College ECE
Preschool for Little Children
Puerta Abierta Preschool
Reba Early Learning center
Robert Crown
School for Little Children
Toddler Town
Total Child
Warren Cherry Preschool
Unity Preschool



Joseph E.Hill (JEH) Center for Early Education

Family Center (Birth to Three programs)

- Home Visiting
- Doorway to Learning Early Learning Center

Early Childhood: (3 - 5 year-old programs)

- Head Start
- Preschool for All (PFA)
- Individualized Education Services (Special Education)

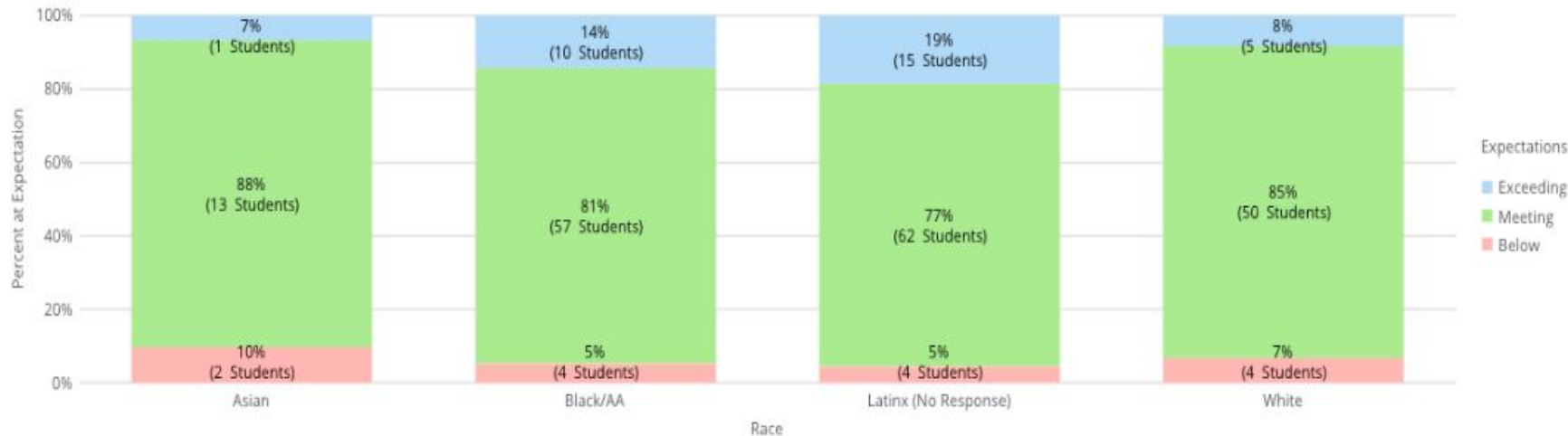
D65 Early Childhood Board Update



JEH Strategic Plan Goal 2: Create a culture in which teaching and learning is driven by diversity, equity, and inclusion.

Outcomes: TS Gold EOY SEL Data for SY21, as disaggregated by race and ethnicity

SEL by Race

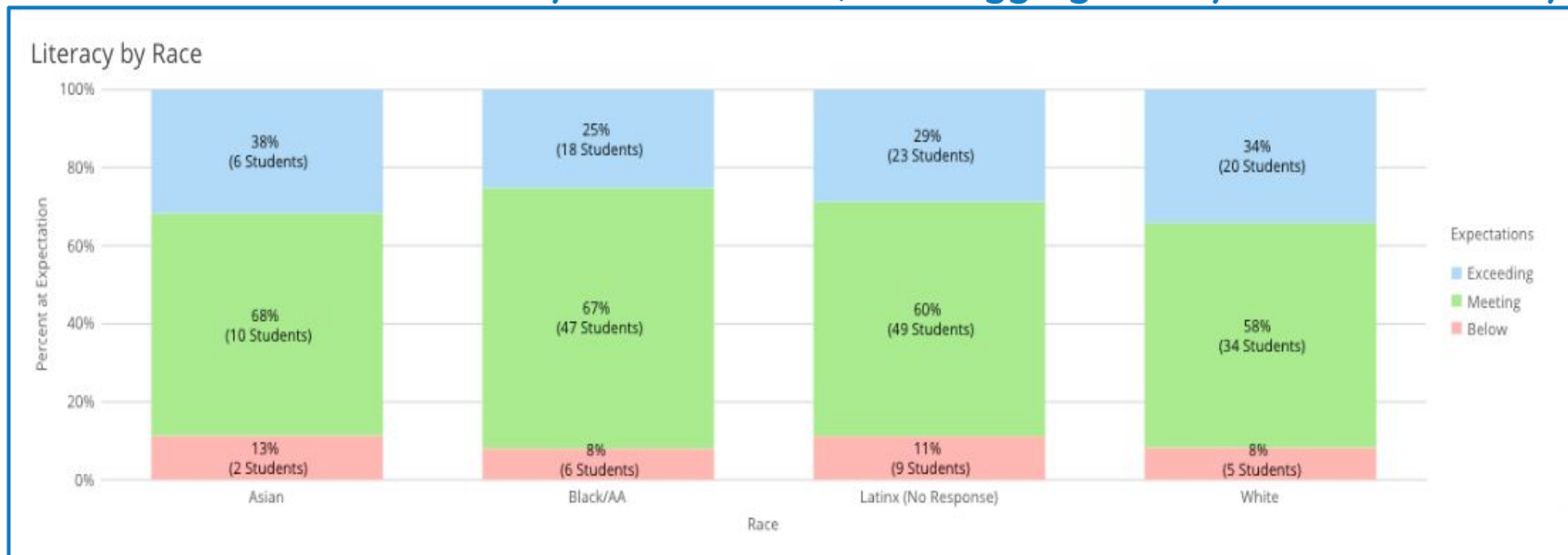


D65 Early Childhood Board Update



JEH Strategic Plan Goal 2: Create a culture in which teaching and learning is driven by diversity, equity, and inclusion.

Outcomes: TSG EOY Literacy Data for SY21, as disaggregated by race and ethnicity



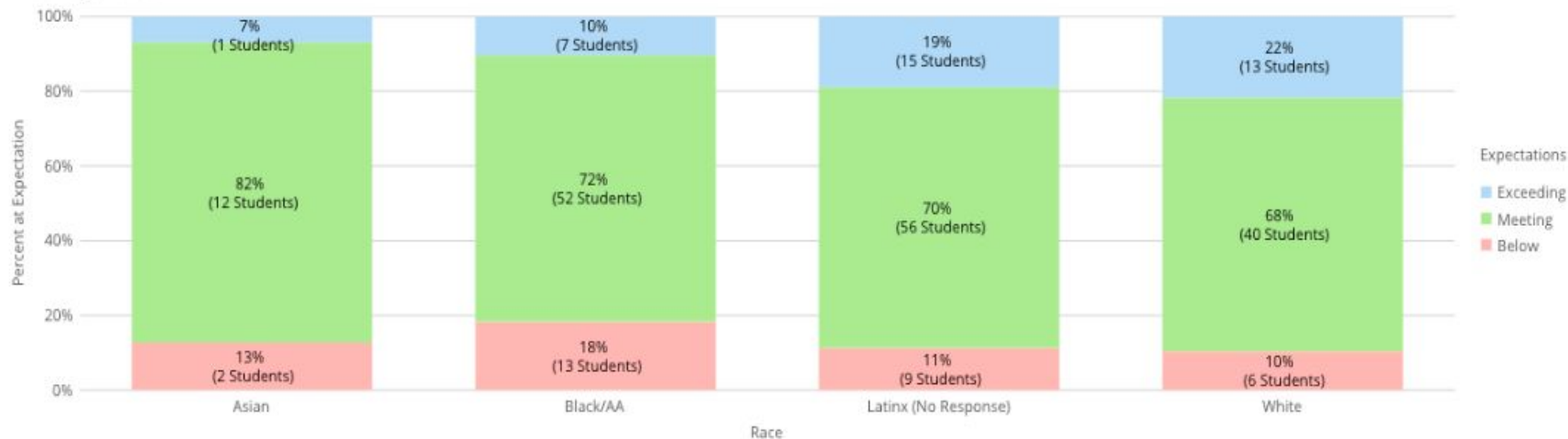
D65 Early Childhood Board Update



JEH Strategic Plan Goal 2: Create a culture in which teaching and learning is driven by diversity, equity, and inclusion.

Outcomes: TSG EOY Math Data for SY21, as disaggregated by race and ethnicity

Math by Race



Challenges and Opportunities



Opportunities

- Support 0-5 year olds on waitlists and that are not in early intervention
- Open additional classrooms in some D65 schools

Challenges

- Funding
- Offering pre k throughout Evanston
- Coordination with existing community-based preschools

YOUR THOUGHTS



Tell Us Your Thoughts



tejoin.com

342-147-747

What should we consider in phase II regarding preschool program placement?

Tell Us Your Thoughts



tejoin.com

902-650-496

How do we ensure preK programs are equitable across the district?

Tell Us Your Thoughts



tejoin.com

567-884-569

What else should we consider?

SAP PHASE II

NEXT STEPS

What's Next ?



Discovery Meetings

Click [here](#) to see all of our community discovery tour dates, times, and locations.



Development of SAP Phase II Committee

SAP Phase II Committee application will be sent in December 2022.

Committee selections will take place by January 2023.

Committee work January - May 2023.

Present Program and Policy Recommendations to D65 Board

May 2023!

THANK YOU!

Student assignment is a part of our multi-faceted approach to long-term planning for the future of our public schools.