

Student Assignment Planning (SAP) Community Discovery Tour

Agenda



1 Student Assignment
Project Overview

2 King Arts Program
Video

3 King Arts
Engagement Activity

4 King Arts Data
Review

5 Community
Conversation

6 SAP Next Steps

SAP PHASE 1

OVERVIEW

Scenario A 2.0

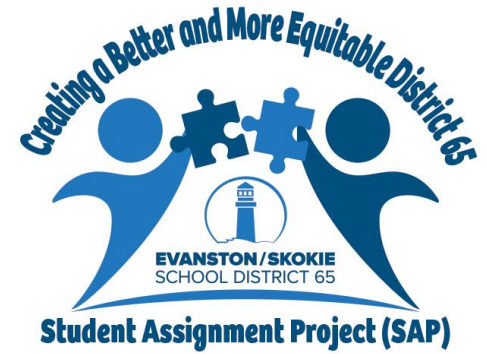
Boundary Lines

- ✓ Construction of a 5th Ward School (K-8)
- ✓ Bessie Rhodes school co-located on the 5th Ward campus (magnet school within a school)
- ✓ Elementary and Middle School Boundary Revisions
- ✓ No change to overall middle school feeder pattern (with exception of 5th ward school).

Programming

- ✓ This is what we're here to talk about today!

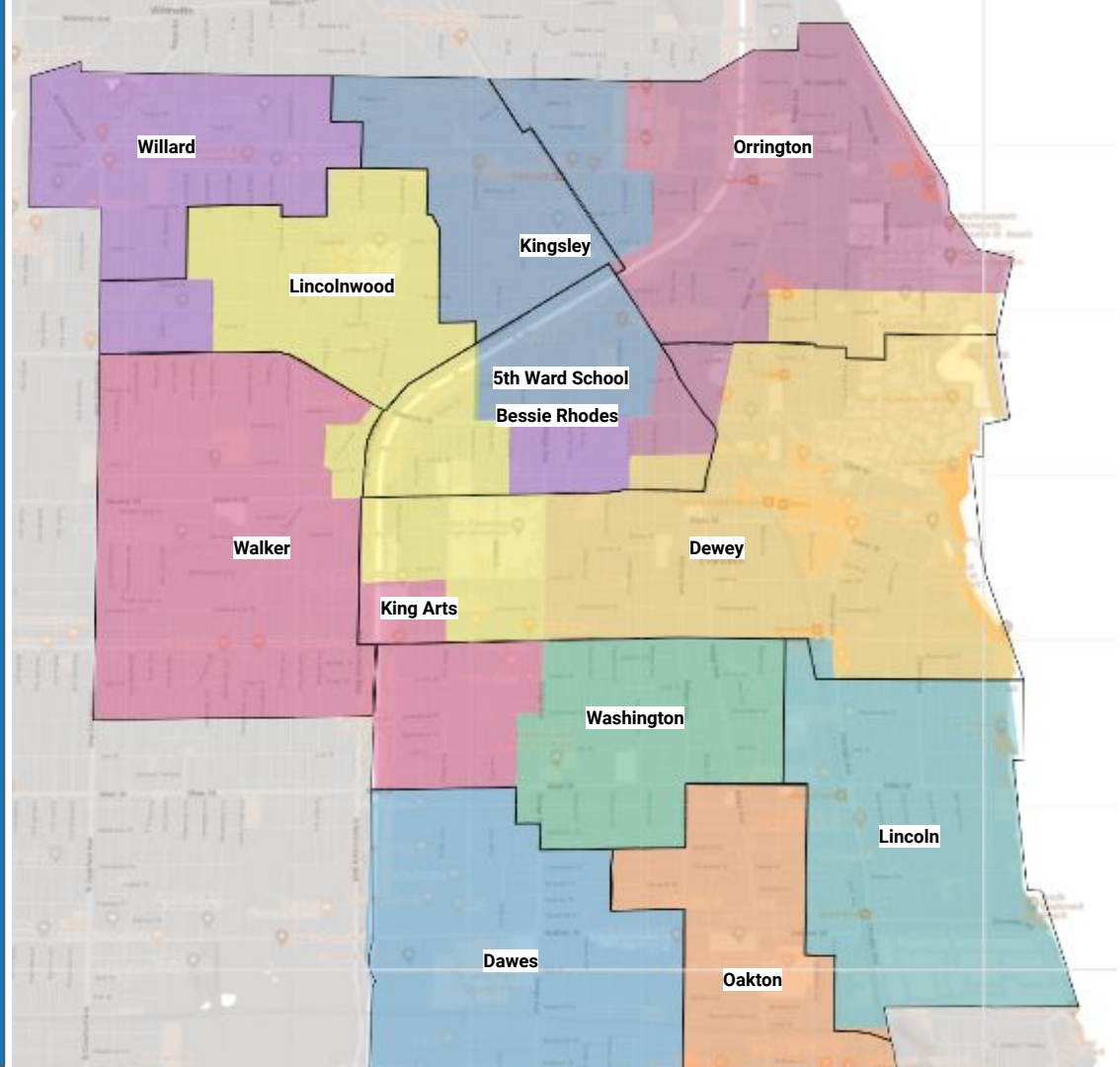
Scenario At A Glance



SCENARIO A 2.0

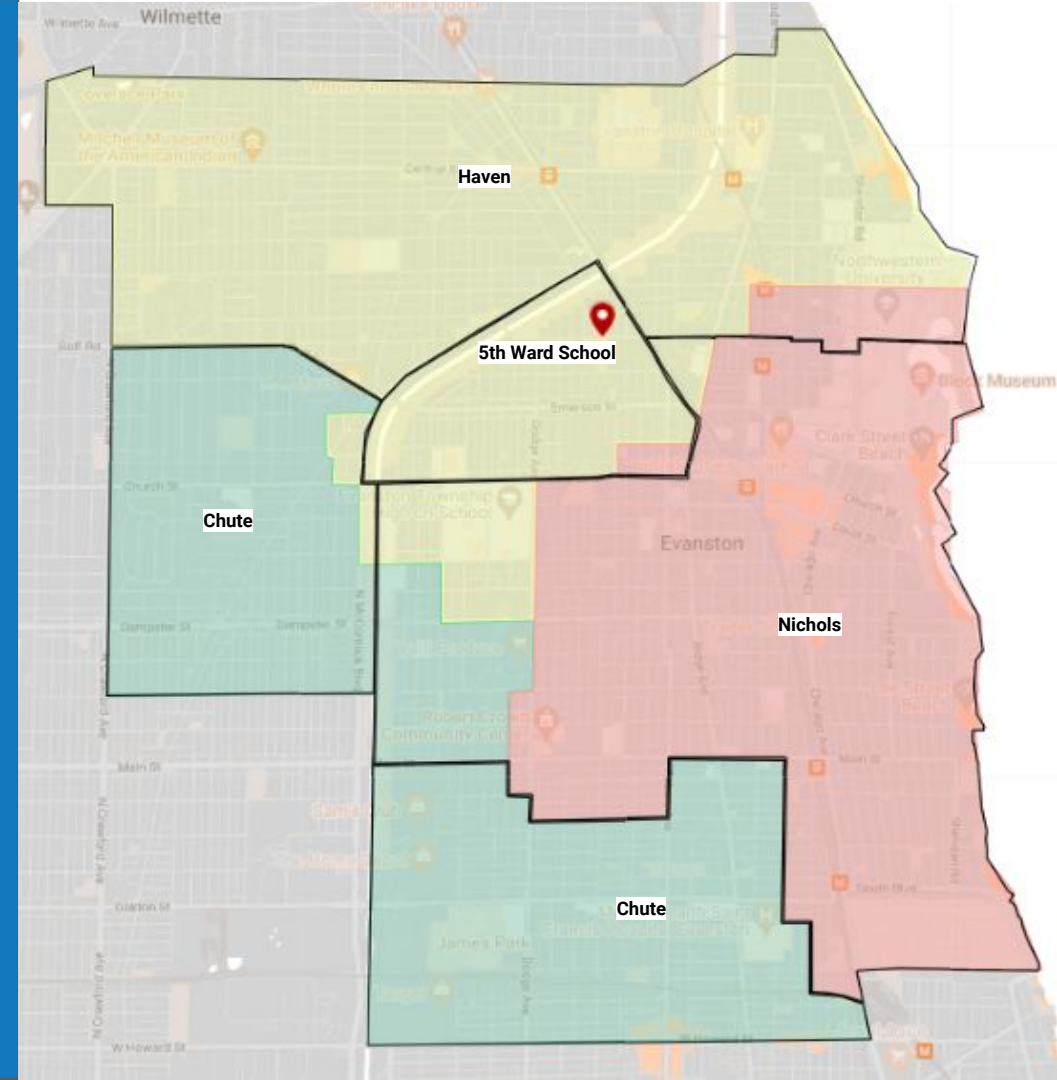
Proposed Elementary Boundaries Map

Interactive map on the SAP website here



SCENARIO A 2.0

Proposed Middle School Boundaries Map



Interactive map on the SAP website here

KING ARTS

VIDEO



King Arts Magnet School

KING ARTS **ACTIVITY**

What Makes King Unique?

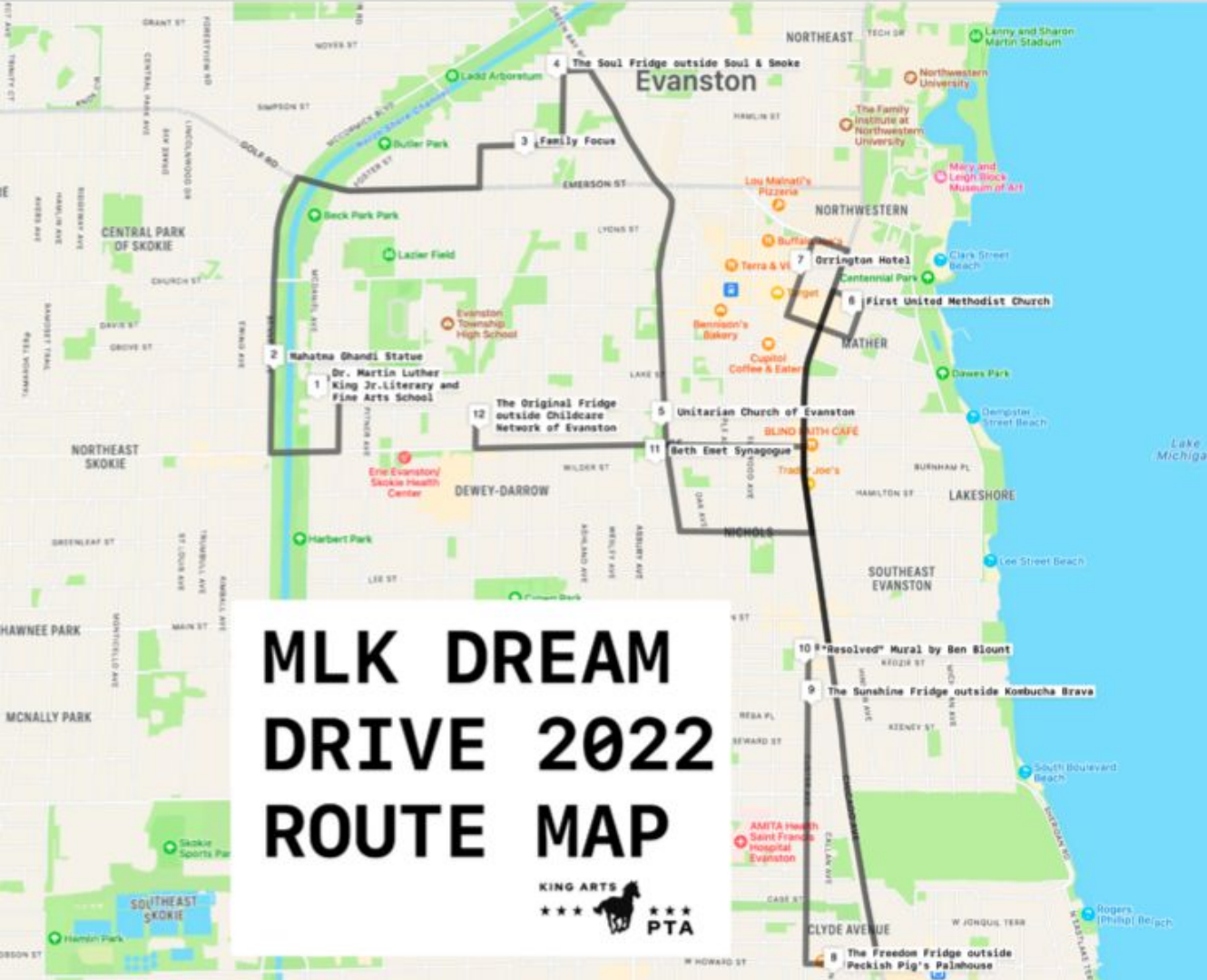


Each year King Arts hosts a Dream Drive Tour

- The MLK Dream Drive is a guided audio tour and car parade through Evanston exploring the history and relevance of various locations Dr. Martin Luther King, Jr. visited, and the Civil Rights Movement.
- The audio tour is narrated by King Arts students and faculty.
- The event is free and open to the public.

Click here to join the tour!

<http://kingartsdrama.weebly.com/mlk-dream-drive-audio-stories.html>

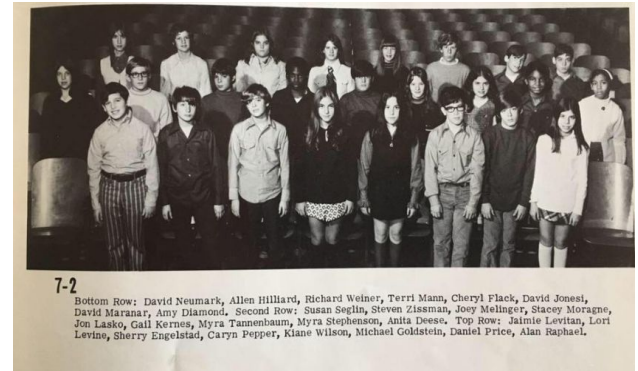


KING ARTS DATA

How Was King Arts Developed?



- Following a decision of the D65 School Board to adopt a comprehensive all-school integration program, of which a laboratory school was an integral part, a K-5 integrated laboratory school was initiated at Foster School.
- In the fall of 1967, Foster elementary school, comprised of an entirely African American student population
- was integrated by adding a laboratory kindergarten class.
- As the declining student population was causing a number of Evanston's elementary schools to close (including Foster School), the King Lab project survived by combining with Skiles Middle School in the late 70s.
- The King Lab program shifted to the 2nd Ward in 1979, which is where the Dr. Martin Luther King Jr. Literary & Fine Arts School is now.





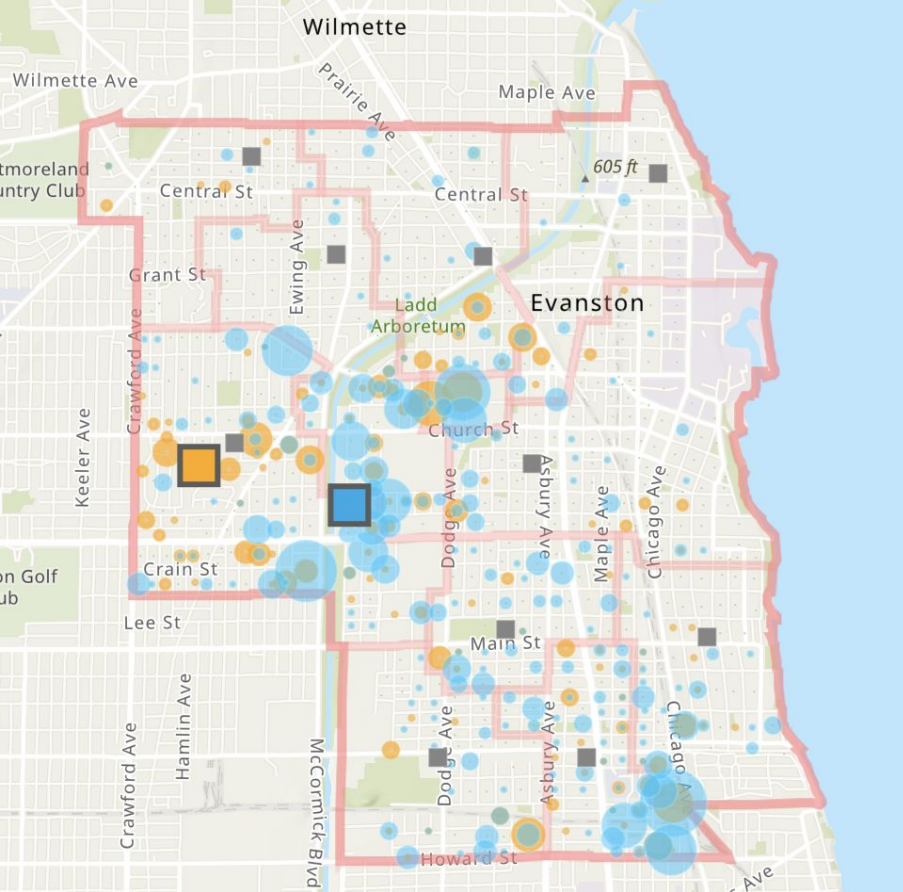
5 Year Enrollment Data


Dates	Enrollment
2022 - 2023*	406
2021 - 2022	443
2020 - 2021	495
2019 - 2020	498
2018 - 2019	561

* Current student enrollment as of 9.9.22



Where Do King Arts Families Live?



 Dr. Martin Luther King Jr. Literary & Fine Arts Schools
(Larger circles indicate more students)



YOUR THOUGHTS



Tell Us Your Thoughts



We want to collect your thoughts on the following questions



tejoin.com

229-228-595

What could make King's programming more attractive to applicants?

Tell Us Your Thoughts



We want to collect your thoughts on the following questions



tejoin.com

100-038-238

How can the district support the King Arts community?

SAP PHASE II

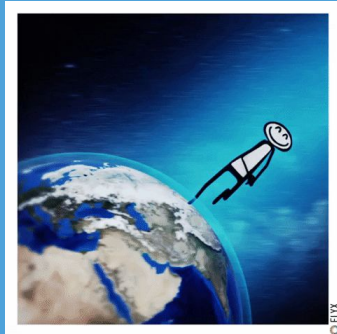
NEXT STEPS

What's Next ?



Discovery Meetings

Click [here](#) to see all of our community discovery tour dates, times, and locations.



Development of SAP Phase II Committee

SAP Phase II Committee application will be sent in December 2022.

Committee selections will take place by January 2023.

Committee work January - May 2023.

Present Program and Policy Recommendations to D65 Board

May 2023!

THANK YOU!

Student assignment is a part of our multi-faceted approach to long-term planning for the future of our public schools.