



**Hendrick Hudson  
School District**

# 2018 Bond Phase 1 Projects Update

School Board MEETING  
10 October 2018

**ksq**design

**Savin**  
Savin Engineers, P.C.



**Hendrick Hudson  
School District**

# SECURITY Projects Update

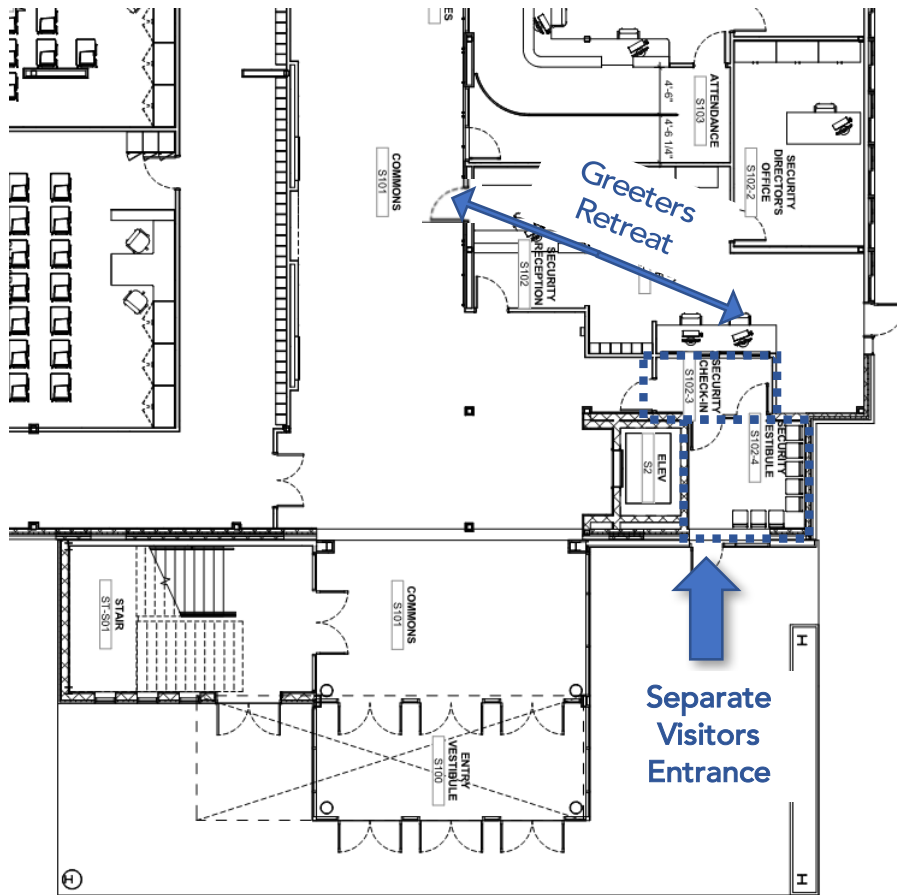
**ksq**design

**SAVIN**  
Savin Engineers, P.C.

# GUIDING DESIGN PRINCIPLES - safe & secure entry

## Make it Friendly...

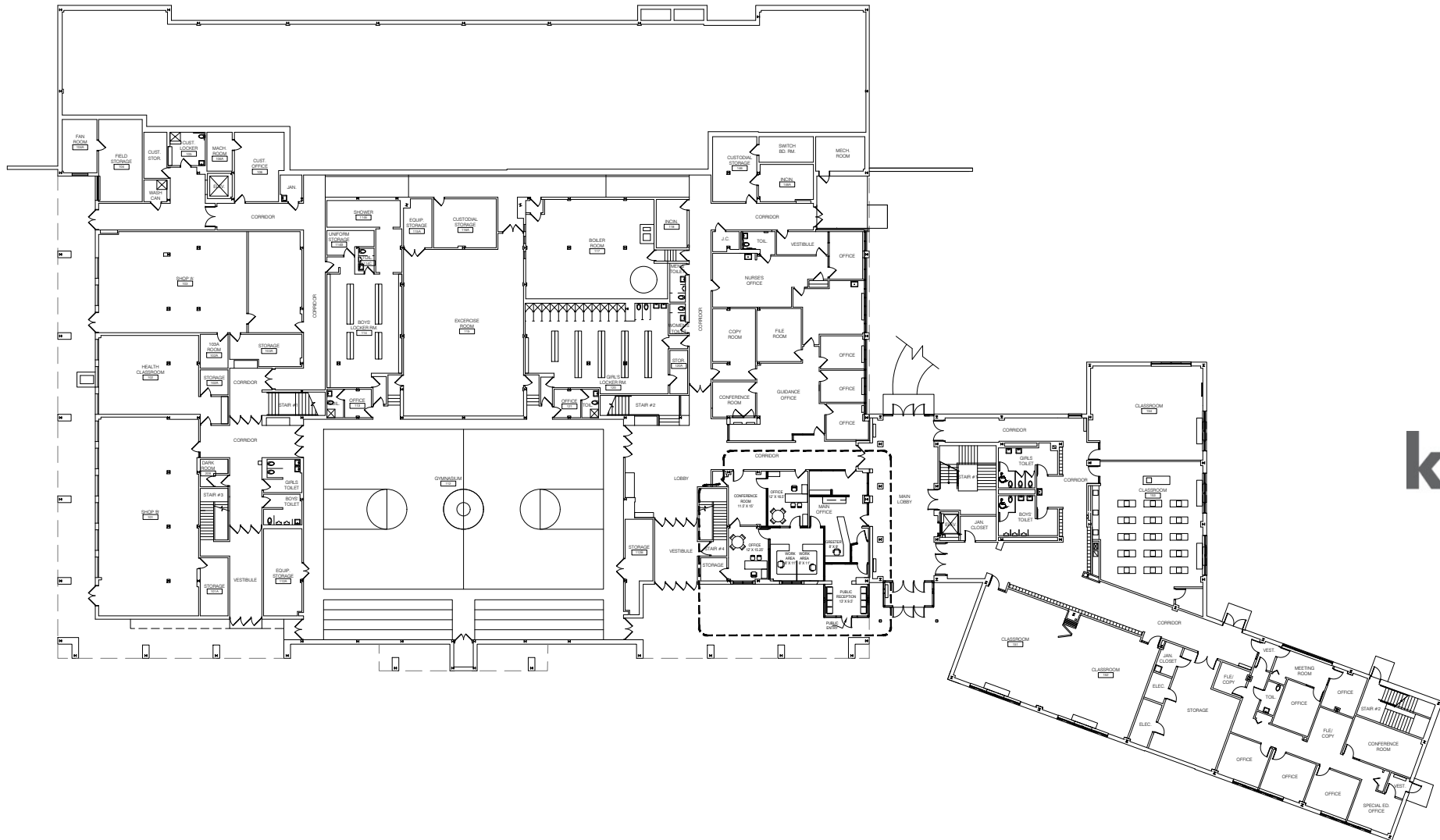
- Separate VISITORS entrance
- Secure vestibule – “make it comfortable”
- Greeter “retreat path”



ksq

# BLUE MOUNTAIN MIDDLE SCHOOL

## OVERALL PLAN



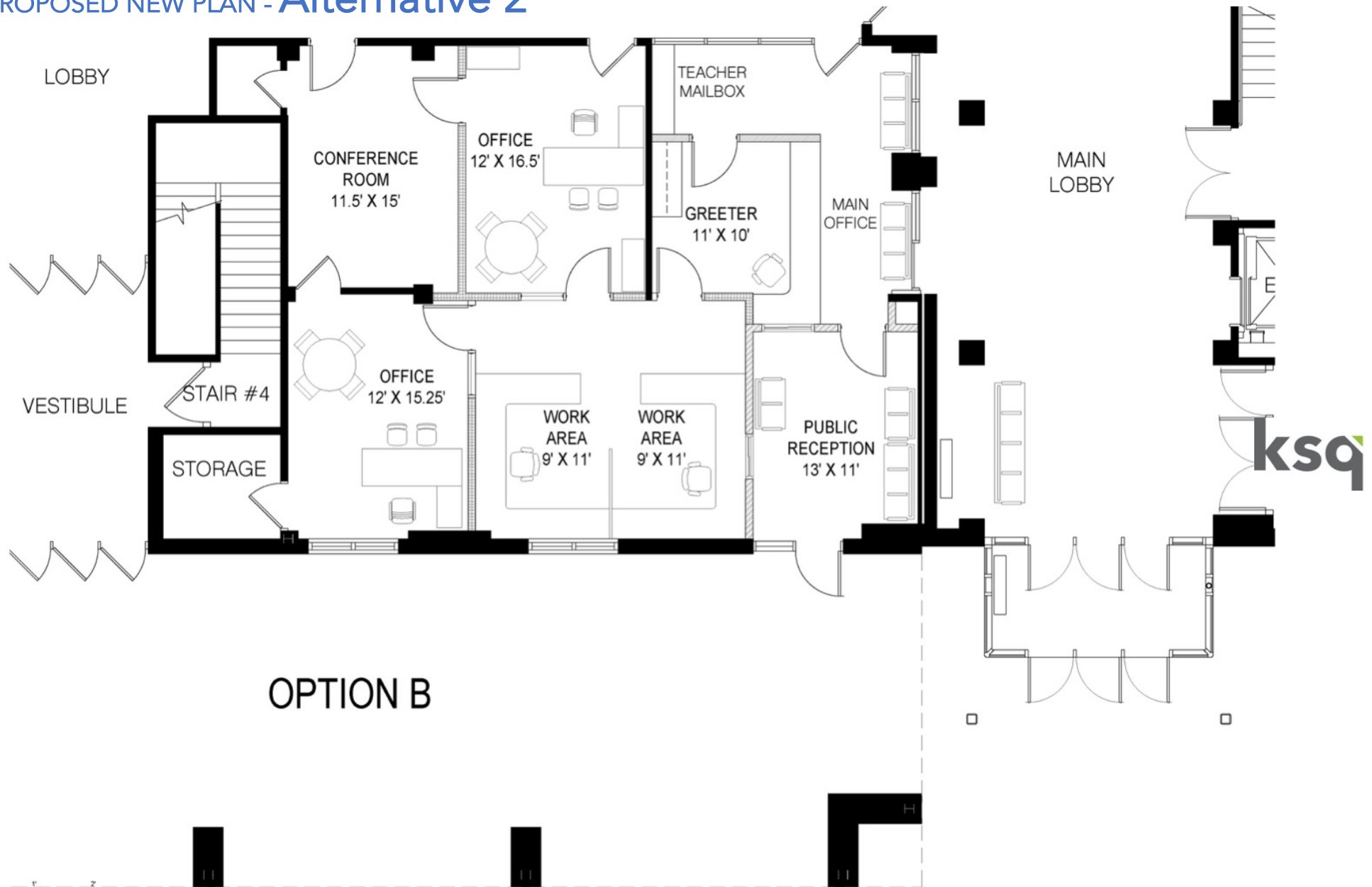
SECURITY ENTRY STUDY  
NTS

ISSUED 10 SEPT. 2018 – Pricing Verification Not Yet Complete

HENDRICK HUDSON SCHOOL DISTRICT  
**BLUE MOUNTAIN MS**  
**OVERALL FLOOR PLAN**  
KSQ Design July 12, 2018

# BLUE MOUNTAIN MIDDLE SCHOOL

## PROPOSED NEW PLAN - Alternative 2



SECURITY ENTRY STUDY

1/4" = 1'-0"

ISSUED 10 SEPT. 2018 – Pricing Verification Not Yet Complete

HENDRICK HUDSON SCHOOL DISTRICT  
BLUE MOUNTAIN MS

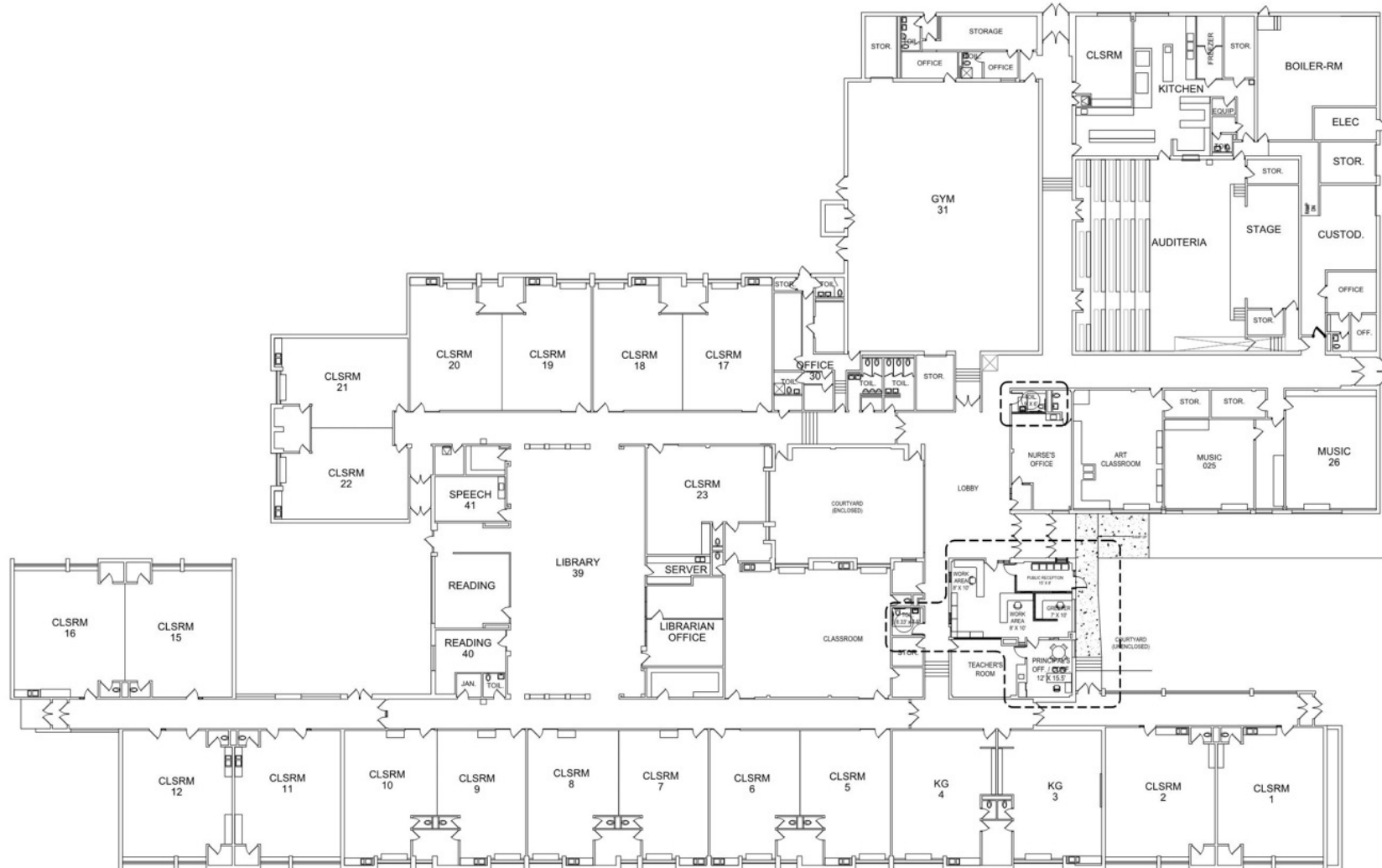
**FLOOR PLAN LAYOUT**

KSQ Design

September 17, 2018

# BUCHANAN VERPLANCK ES

## OVERALL PLAN



ksq



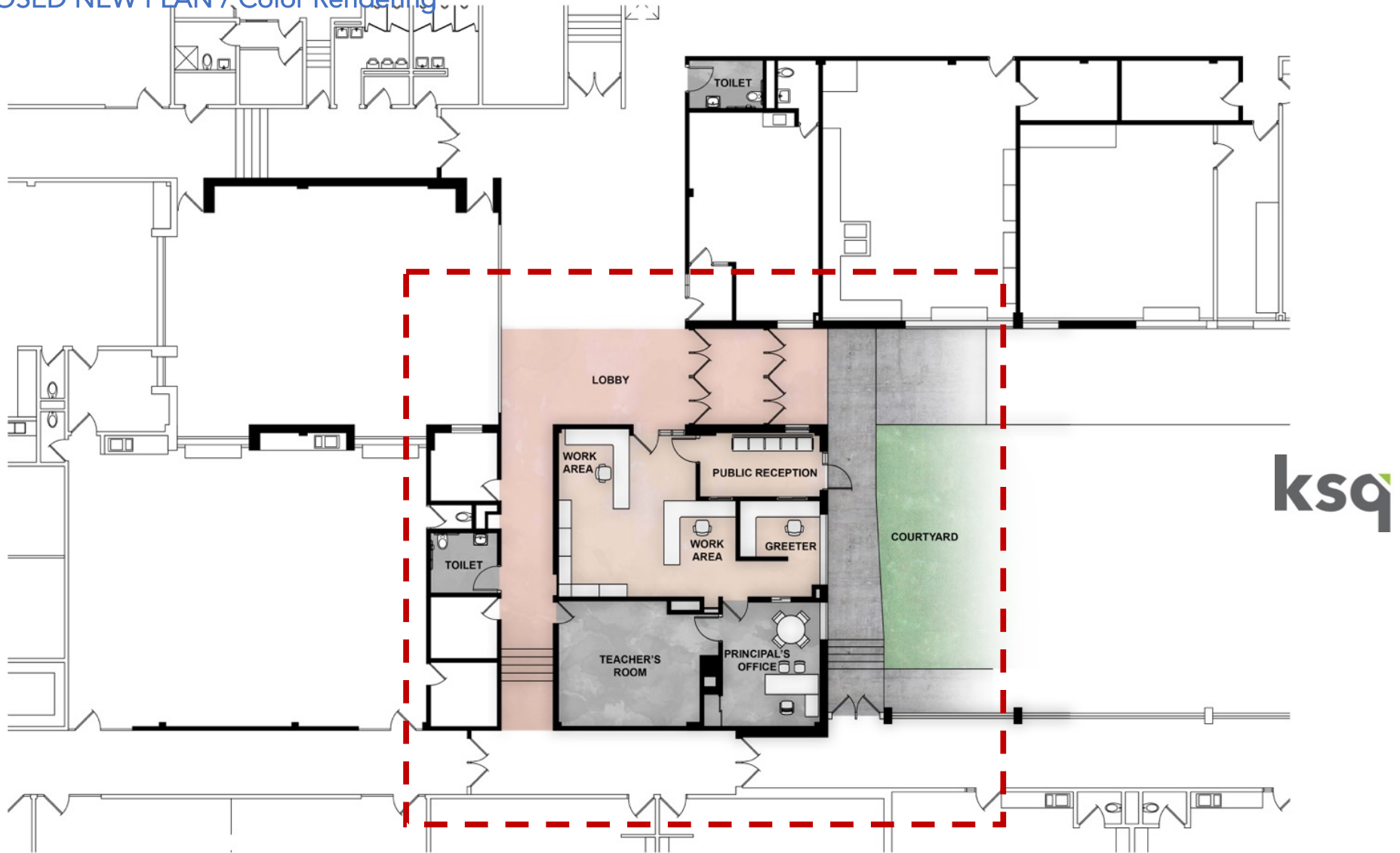
SECURITY ENTRY STUDY  
NTS

ISSUED 10 SEPT. 2018 – Pricing Verification Not Yet Complete

HENDRICK HUDSON SCHOOL DISTRICT  
BUCHANAN VERPLANCK ES  
**OVERALL FLOOR PLAN**  
KSQ Design  
July 30, 2018

# BUCHANAN VERPLANCK ES

PROPOSED NEW PLAN / Color Rendering



SECURITY ENTRY STUDY

1/8" = 1'-0"

ISSUED 10 SEPT. 2018 – Pricing Verification Not Yet Complete

HENDRICK HUDSON SCHOOL DISTRICT  
BUCHANAN VERPLANCK ES

**FLOOR PLAN LAYOUT**

KSQ Design

July 30, 2018

# BUCHANAN VERPLANCK ES

PROPOSED NEW PLAN / Color Rendering

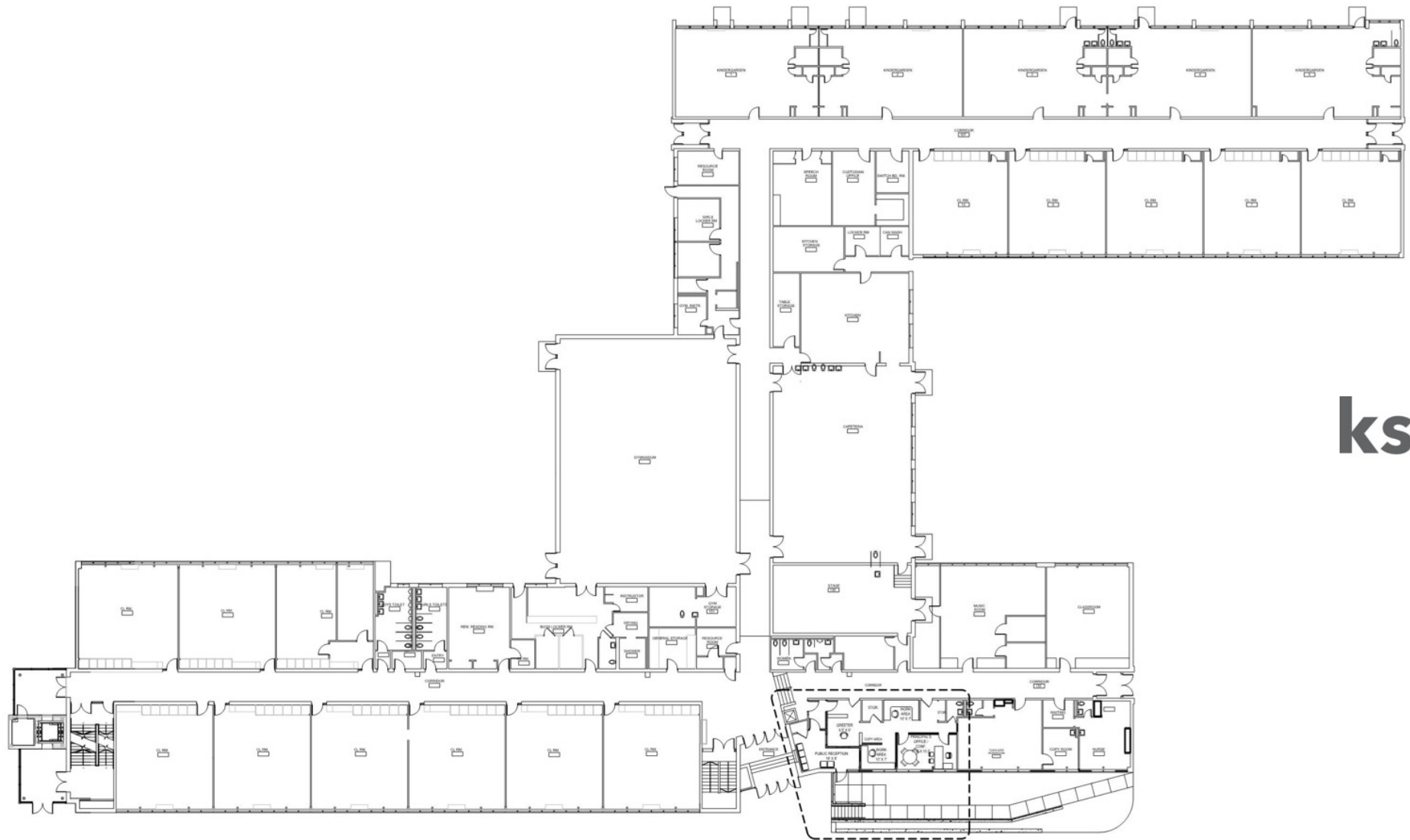


ksq

ISSUED 10 SEPT. 2018 – Pricing Verification Not Yet Complete

# FRANK G LINDSEY ES

## OVERALL PLAN



ksq

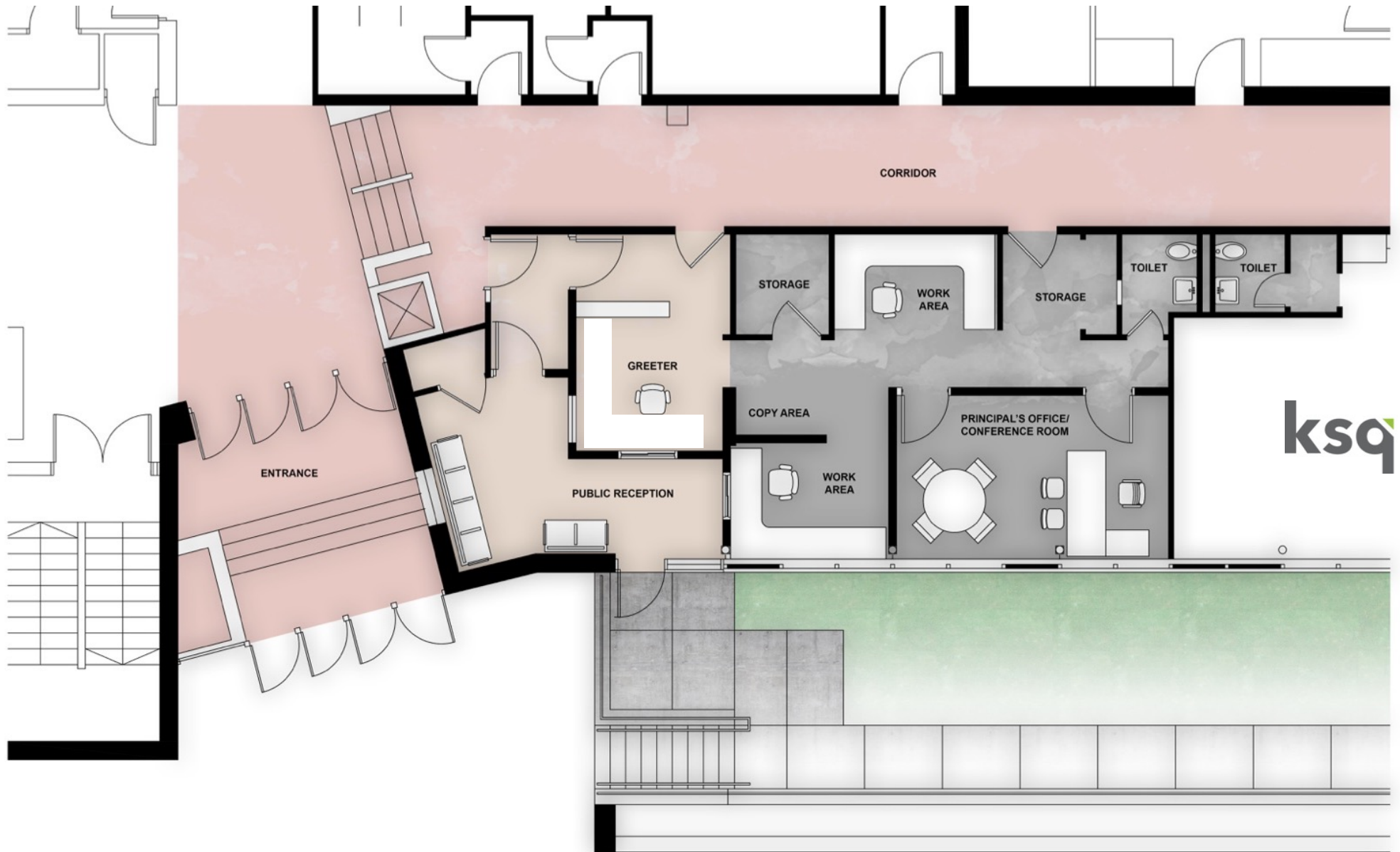
SECURITY ENTRY STUDY  
NTS

ISSUED 10 SEPT. 2018 – Pricing Verification Not Yet Complete

HENDRICK HUDSON SCHOOL DISTRICT  
FRANK G. LINDSEY ES  
**OVERALL FLOOR PLAN**  
KSQ Design July 30, 2018

# FRANK G LINDSEY ES

PROPOSED NEW PLAN / Color Rendering



SECURITY ENTRY STUDY

1/4" = 1'-0"

ISSUED 10 SEPT. 2018 – Pricing Verification Not Yet Complete

HENDRICK HUDSON SCHOOL DISTRICT  
FRANK G. LINDSEY ES

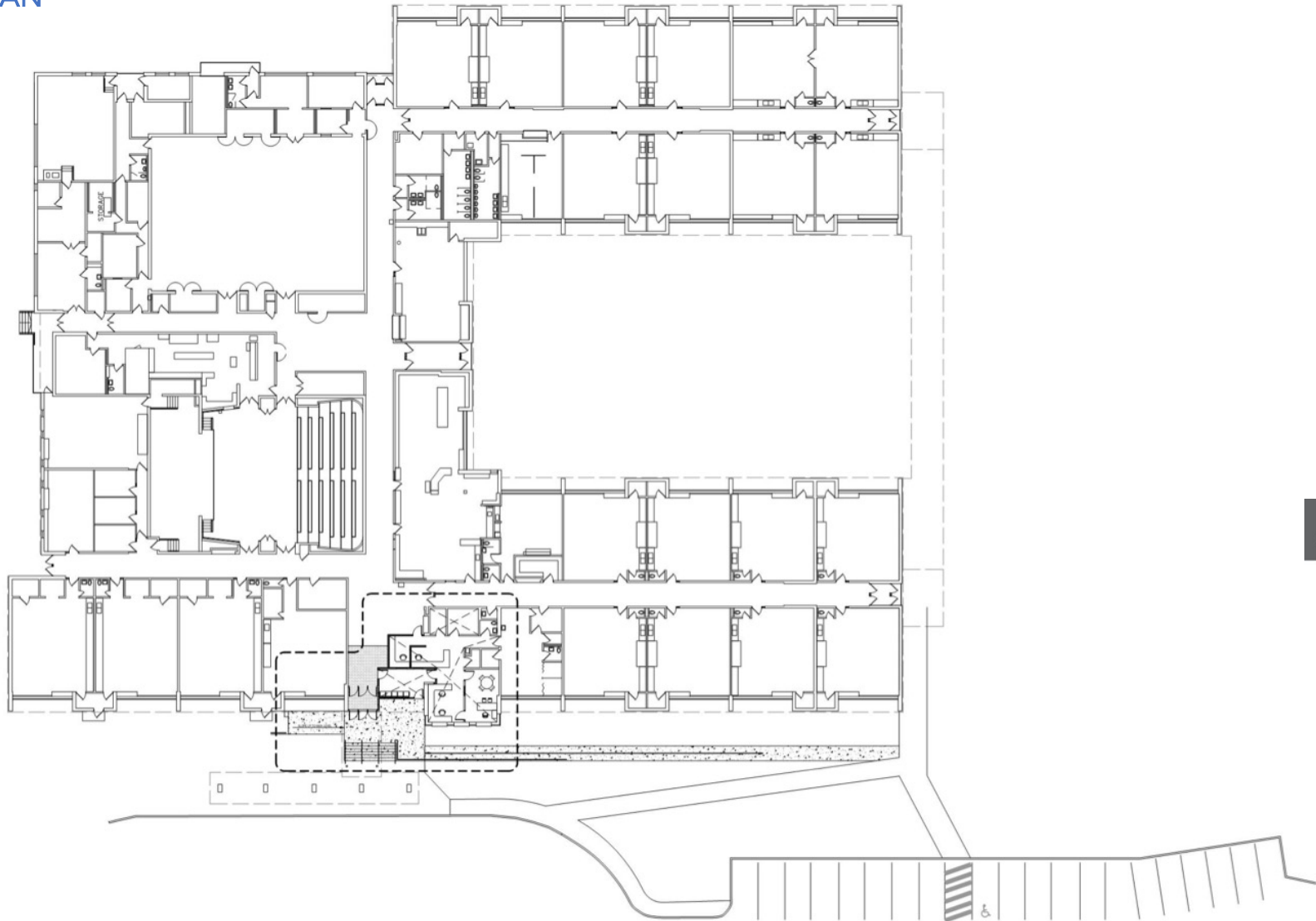
**FLOOR PLAN LAYOUT**

KSQ Design

July 30, 2018

# FURNACE WOODS ES

## OVERALL PLAN



ksq

SECURITY ENTRY STUDY  
NTS

ISSUED 10 SEPT. 2018 – Pricing Verification Not Yet Complete

HENDRICK HUDSON SCHOOL DISTRICT  
FURNACE WOODS ES  
**OVERALL FLOOR PLAN**  
KSQ Design July 12, 2018

# FURNACE WOODS ES

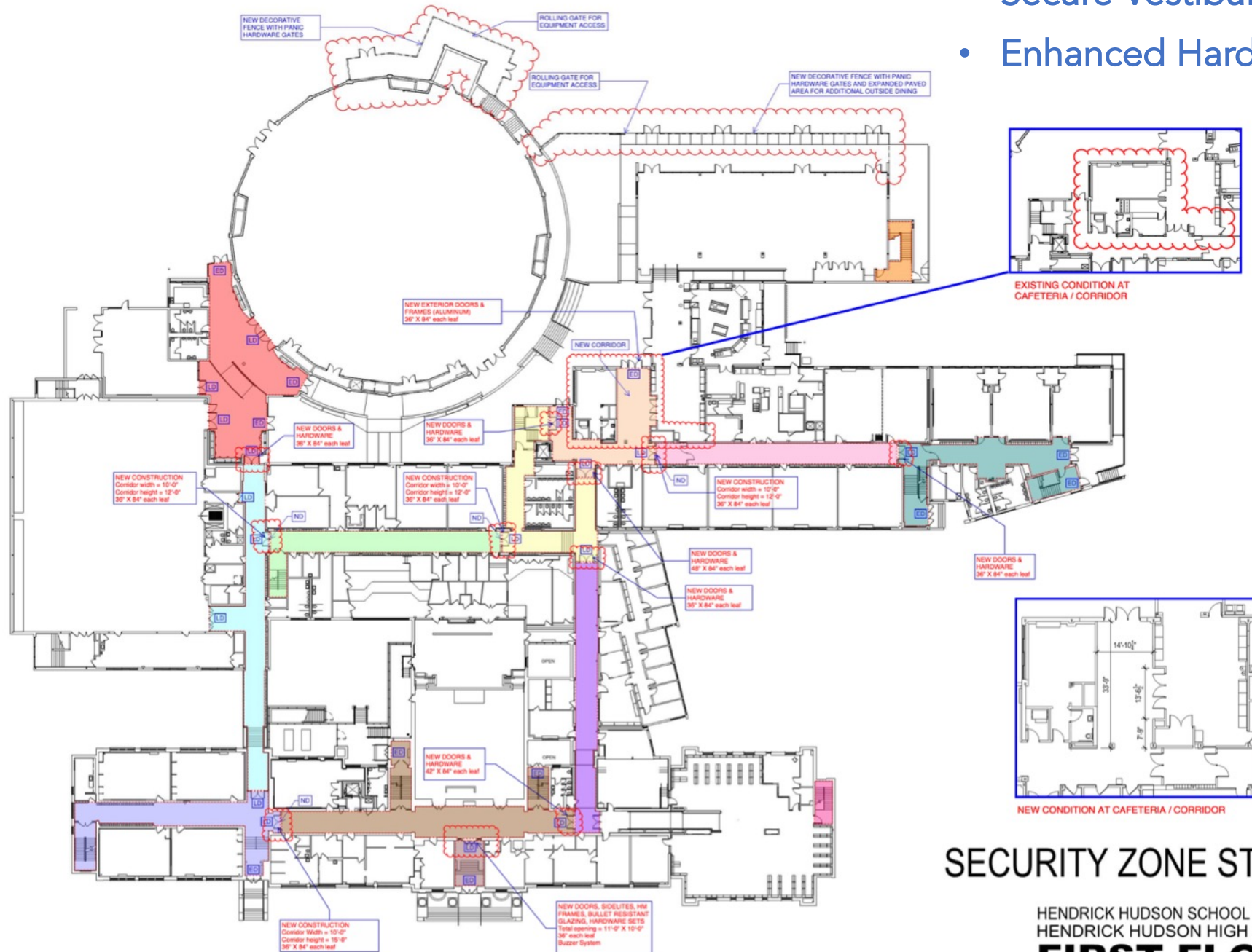
PROPOSED NEW PLAN / Color Rendering



ksq

## PROPOSED SECURITY IMPROVEMENT STRATEGIES

- Compartmentalization
- Secure Vestibule
- Enhanced Hardware



ksq

# SECURITY ZONE STUDY

HENDRICK HUDSON SCHOOL DISTRICT  
HENDRICK HUDSON HIGH SCHOOL

## FIRST FLOOR

KSQ Design

July 12, 2018



**Hendrick Hudson  
School District**

# MAINTENANCE BUILDING Project Update

**ksq**design

**SAVIN**  
Savin Engineers, P.C.

Alternative locations new maintenance building – A & B

Location A:

- Directly across from FGL
- Access through Student Parking Lot
- "very visible"

Location B:

- Access through DO lower parking lot
- Centrally located to athletic practice fields
- "more concealed"



# SURVEY OF EQUIPMENT

## MAINTENANCE BUILDING EQUIPMENT

BRAND	MODEL	ATTACHMENTS	QTY.
KUBOTA	M7060 LOADER	BUCKET	1
		SNOW BUCKET	1
		JAWS	1
		SEEDER	1
		CORE AERATOR	1
BOBCAT	S740	BUCKET	1
		SNOW BLOWER	1
		BACKHOE	1
		AUGER	1
		LANDSCAPE RAKE	1
		FORKS	1
BOBCAT	TOOLCAT	BUCKET	1
		ROTARY SEEDER	1
		TOP PRESSURE	1
JOHN DEERE	4600 LOADER	BUCKET	1
		YARD RAKE	1
		ROTO TILER	1
?	1600 TURBO MOWER		3 ?
	1445 MOWER		1
?	932 RIDE ON FRONT BLOWER		1 ?
?	MORBARK	TOW BEHIND WOOD CHIPPER	1 ?
?	CUB CADET	FORCE	2 ?
KIFCO	200S WATER CANNON		1
BOSS	SNOW PLOW	10'-0"	1
		9'-0"	3
		8'-6"	2
		8'-0"	3
FISHER	SANDER	9'-0" X 4'-6"	1
TORNADO	SANDER	8'-6" X 5'-0"	1
SWENSON	SANDER	12'-0" X 6'-0"	1
TRAILER	OPEN	20'-0" X 8'-0"	1
	OPEN	16'-0" X 8'-0"	1
	ENCLOSED	24'-0" X 9'-0"	1

GOOSEN	VACUUM	16'-0" X 8'-0"	1
STOW	ROLLER R-2000		1

## VEHICLES

DODGE	RAM 5500	DUMP	1
	RAM 3500	ROCK-BODY	1
CHEVY	3500 HD	DUMP	1
	3500 4WD	PICKUP	1
	VAN	SINGLE REAR WHEELS	1
	SUBURBAN 4WD		1

## SMALL EQUIPMENTS

400 SQFT	WEED WACKERS
	BLOWER
	SHOVELS & RAKES
	GENERATOR
	PUMPS
	SMALL MOWERS
	OTHER

## STORAGE

400 SQFT	SALT
	SEED
	CONCRETE
	WATER HOSES
	COLLECTORS
	OTHER

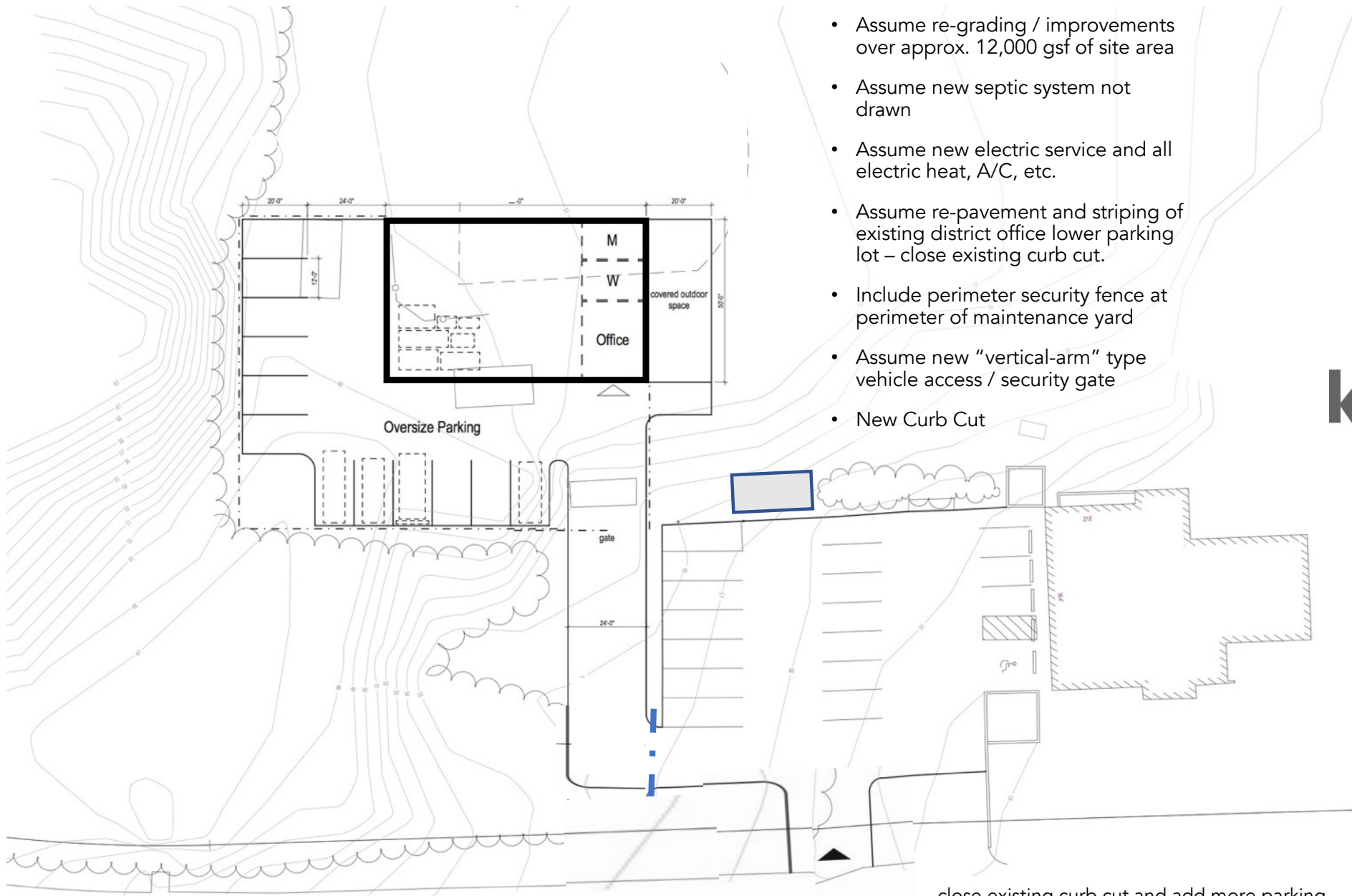
## WORK AREA

600-800 SQFT	GRINDERS
	DRILL PRESS
	WORK BENCHES
	RACKS FOR ATTACHMENTS, PLOWS, SANDERS

SITE ALIGNMENT DIAGRAM



## SURVEY OF EQUIPMENT



## FINAL PLAN

- 80 ft. X 50 ft. footprint of enclosed maintenance building area
- Assume re-grading / improvements over approx. 12,000 gsf of site area
- Assume new septic system not drawn
- Assume new electric service and all electric heat, A/C, etc.
- Assume re-pavement and striping of existing district office lower parking lot – close existing curb cut.
- Include perimeter security fence at perimeter of maintenance yard
- Assume new “vertical-arm” type vehicle access / security gate
- New Curb Cut

ksq

close existing curb cut and add more parking

A-100

PROGRESS SET FOR REVIEW ONLY

Architectural drawings for a building, including floor plans, ceiling plan, and building sections.

**4 ENLARGED FLOOR PLAN**  
SCALE: 1/8" = 1'-0"

**5 ENLARGED REFLECTED CEILING PLAN**  
SCALE: 1/8" = 1'-0"

**1 NORTH-SOUTH BUILDING SECTION**  
SCALE: 1/8" = 1'-0"

**2 NORTH-SOUTH BUILDING SECTION**  
SCALE: 1/8" = 1'-0"

**3 SOUTH-NORTH BUILDING SECTION**  
SCALE: 1/8" = 1'-0"

The figure contains five architectural drawings of a building. At the top left is the '4 ENLARGED FLOOR PLAN' showing a layout with a 'TOILET / SHOWER' area, 'MALE TOILET', and 'FEMALE TOILET'. To its right is the '5 ENLARGED REFLECTED CEILING PLAN' showing the ceiling layout with light fixtures. Below these are three building sections: '1 NORTH-SOUTH BUILDING SECTION' on the left, '2 NORTH-SOUTH BUILDING SECTION' in the center, and '3 SOUTH-NORTH BUILDING SECTION' on the right. Each section shows the internal structure, roof, and floor levels with various dimensions. The drawings are oriented horizontally on the page.

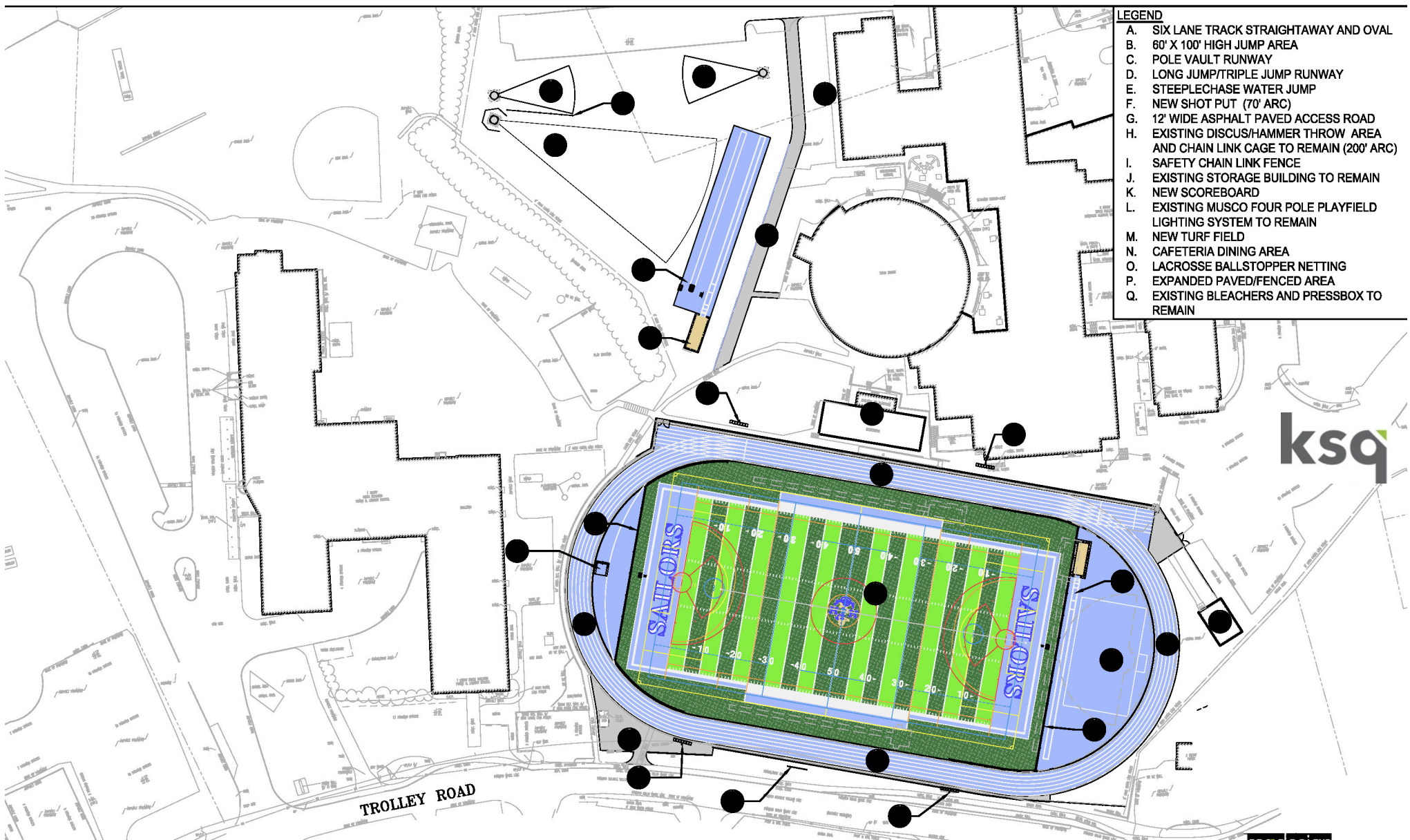


**Hendrick Hudson  
School District**

# ATHLETICS Project Update

**ksq**design

**SAVIN**  
Savin Engineers, P.C.



## HENDRICK HUDSON HS - PROPOSED STADIUM LAYOUT OPTION 17

October 8, 2018

SCALE 1"=80'





**Hendrick Hudson  
School District**

# BUDGET STATUS

**ksq**design

**SAVIN**  
Savin Engineers, P.C.



**Hendrick Hudson  
School District**

Thank You !!

**ksq**design

**SAVIN**  
Savin Engineers, P.C.



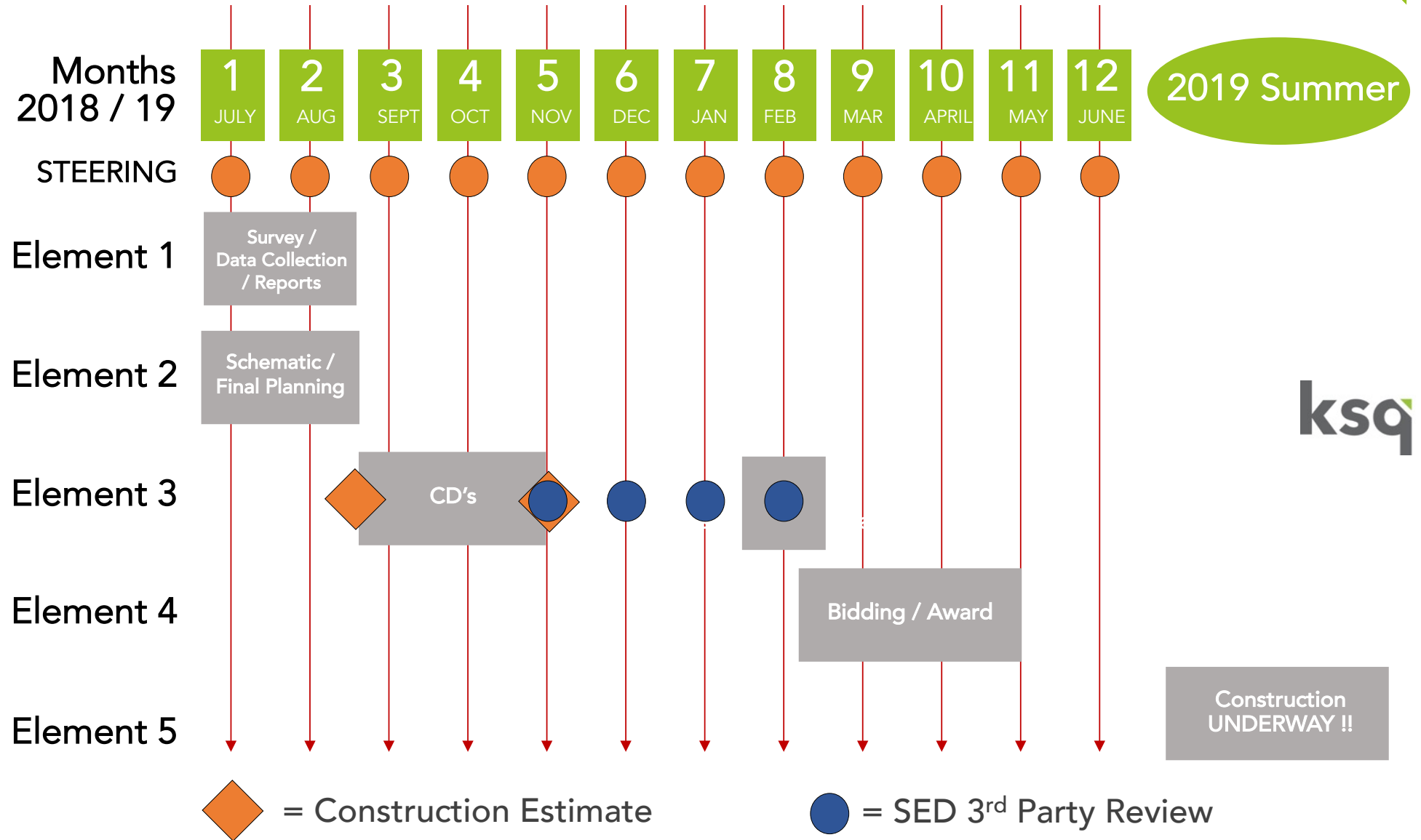
**Hendrick Hudson  
School District**

appendix...

**ksq**design

**SAVIN**  
Savin Engineers, P.C.

# Priority 1: Preliminary Schedule



**ksq**