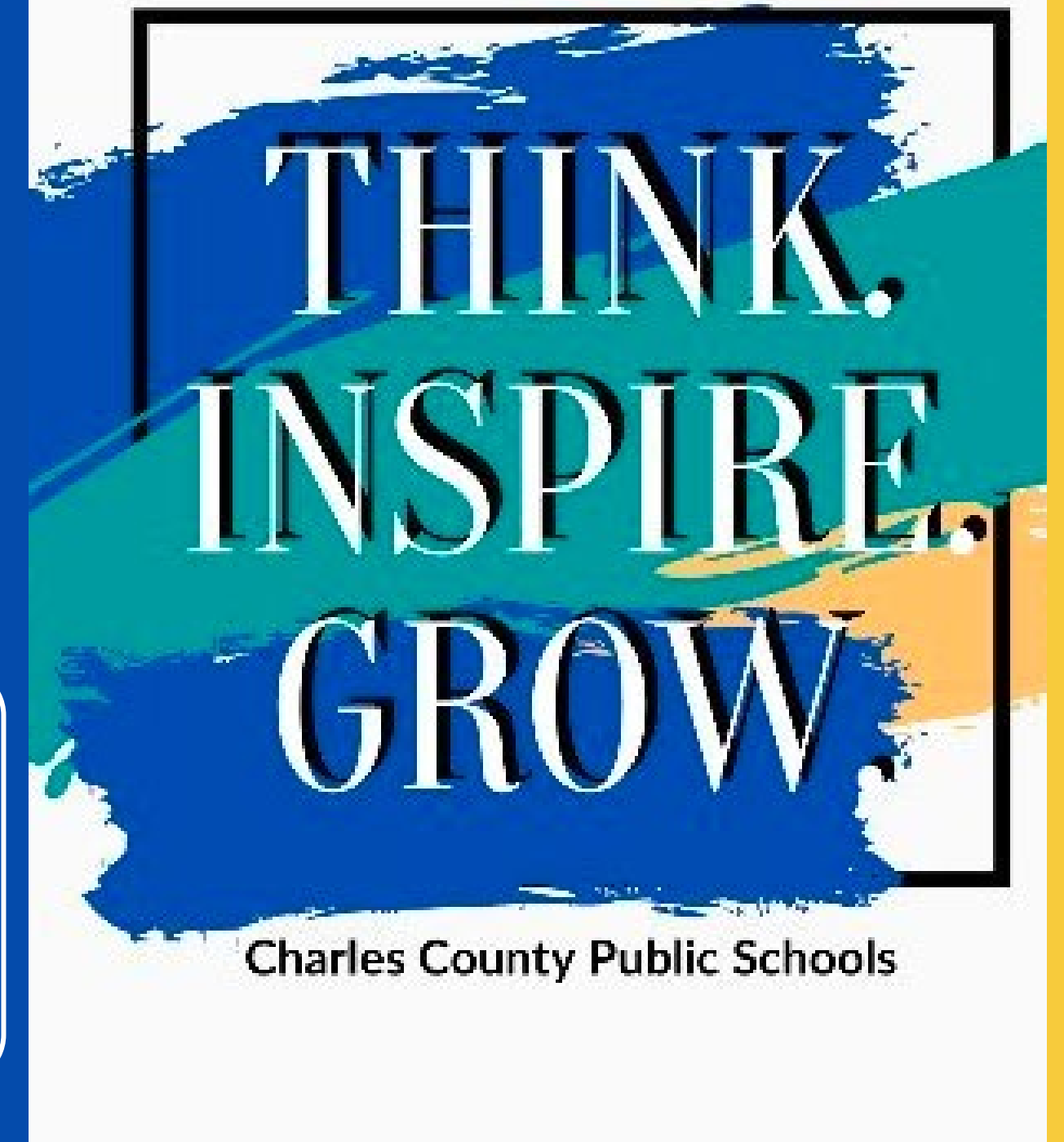


Charles County Public Schools State of The Schools

Early Learning Center La Plata

Candice Adam & Becky Krupa



We Are Off To A Great Start!

Instagram @ elc_laplata1



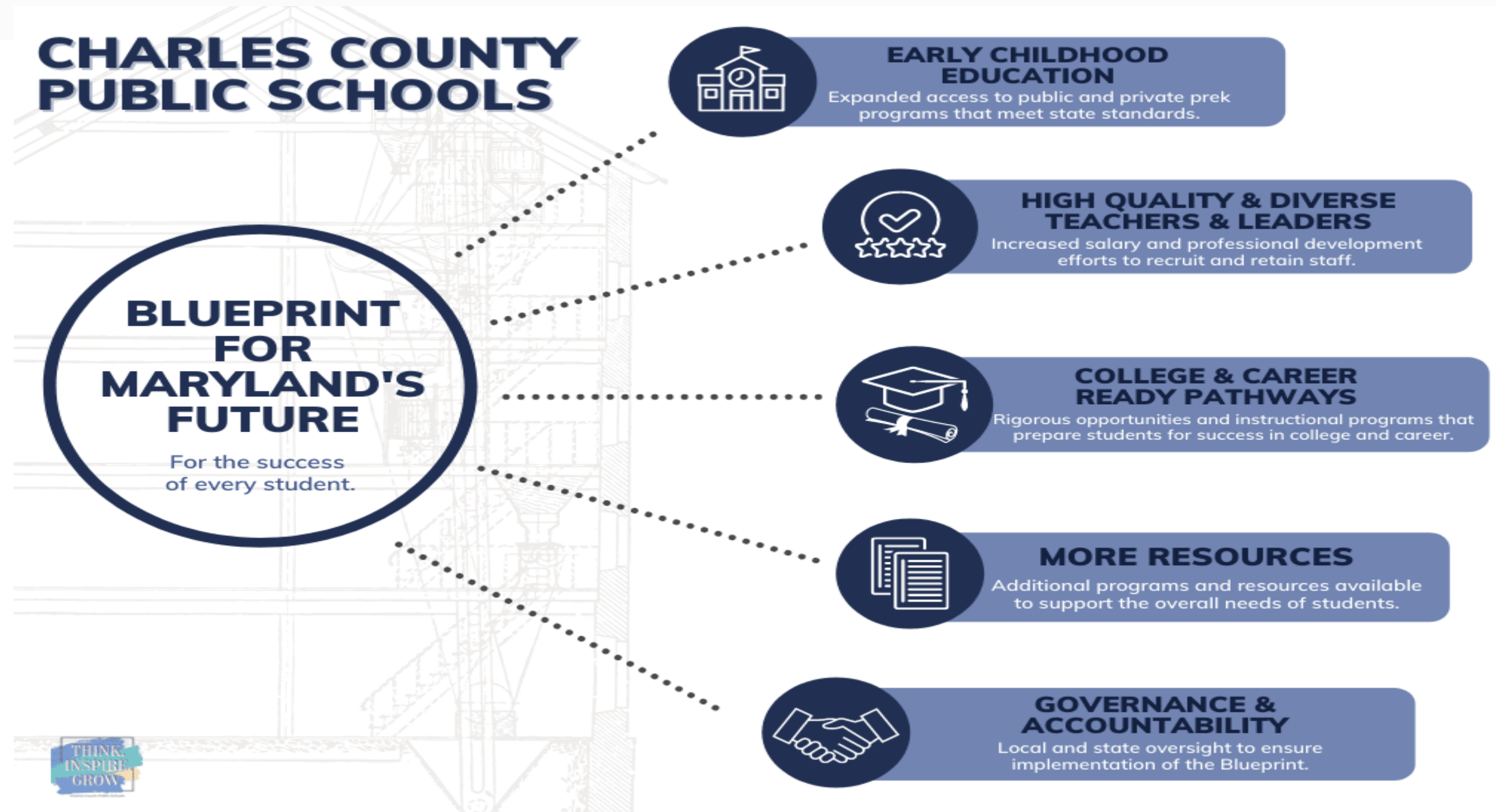
We Are Off To A Great Start!



Blueprint for Maryland's Future

What is the Blueprint for Maryland's Future?

The Blueprint is a landmark piece of legislation passed in 2021, which includes comprehensive changes to Maryland's early childhood and public schools. It was created to enhance Maryland's schools and prepare each student for life after graduation. The landmark educational plan seeks to make Maryland's public schools the best in the world by focusing on 5 policy areas.



Charles County
Public Schools

Working together to achieve excellence for every student.

Pillar 1: Early Childhood Education

Expanded access to public and private Pre-K programs that meet state standards.

The Blueprint for Maryland's Future recognizes the need for equitable educational opportunities to be expanded to our State's earliest learners. By expanding access to high-quality early education programs, we are preparing our students to be successful in their overall school experience.

Some highlights for early childhood education include:

- ☐ Expanding the number of students eligible for free pre-kindergarten in a mixed delivery system by increasing accessibility to students whose family income falls within 300% of the federal poverty line beginning in the 2022 – 2023 school year.
- ☐ Requiring pre-kindergarten providers to have ECE certification (teachers) and an Associate of Arts (AA) or Child Development Associate (CDA) for instructional assistants.
- ☐ Mandating only 20 students per classroom.
- ☐ Requiring Maryland EXCELS, a quality and improvement rating for all private and public providers receiving Blueprint funding.



Charles County
Public Schools

Working together to achieve excellence for every student.



Early Learning Center La Plata

- ☐ 5 classrooms with 3 classrooms in an inclusion model
- ☐ 1 Special Areas classroom that covers all special area topics
- ☐ Fenced in playground
- ☐ Sensory Resource Room
- ☐ Pull-Out Resource Room
- ☐ Full-time nurse
- ☐ Full Service Kitchen that prepares breakfast (hot/cold) and lunch
- ☐ 5 General Education Teachers, 3 Special Education Teachers, 1 Special Areas Teacher
- ☐ 8 Instructional Assistants
- ☐ Follow Connect 4 Learning, Heggerty & Conscience Discipline Curriculums



CCPS Early Childhood Curriculum

☐ Heggerty: Phonemic Awareness

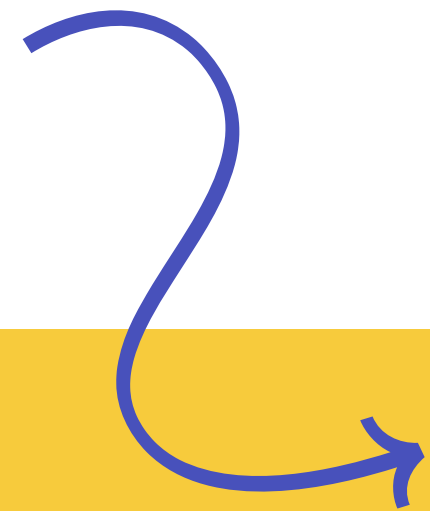
- ☐ Phoneme Isolation
- ☐ Blending
- ☐ Segmenting
- ☐ Manipulation

☐ Connect 4 Learning (C4L)

- ☐ 4 main domains: math, literacy, science, social-emotional
- ☐ Research-based
- ☐ Holistic
- ☐ Embraces play as an element of learning

☐ Conscious Discipline

- ☐ Teaches children to name their emotions, regulate them, and solve problems.
- ☐ Starts with the adults ability to offer empathy when a child is in a state of upset.



Accreditation

- ❑ Maryland Accreditation is a way for our pre-k programs to demonstrate their commitment to providing high-quality learning and continuous program improvements.
- ❑ Shows families and the community that we are dedicated to excellence and working towards a Maryland EXCELS Quality Rating.
- ❑ 18-month process of using the following tools:
 - ❑ Maryland Accreditation Standards
 - ❑ Self-Appraisals
 - ❑ Program Improvement Plan
 - ❑ Technical Assistance from the state of MD
 - ❑ Validation Visit



Charles County
Public Schools

Working together to achieve excellence for every student.

Components of a High Quality Program



- Children's developmental progress measured and linked to curriculum
- Staff have higher levels of training and experience
- Continuous quality improvement process informed by independent assessors
- 4+ opportunities for families to engage in the program
- Activities aligned with a state recommended curriculum
- Family-teacher conferences offered at least twice per year
- Activities support each and every child's individual needs



- Children's developmental progress assessed with multiple measures and linked to curriculum
- Staff meet highest levels of training and experience
- Continuous quality improvement process informed by independent assessors
- State or national accreditation achieved
- 5+ opportunities for families to engage in the program
- State recommended curriculum used
- Family-teacher conferences offered at least twice per year
- Activities support each and every child's individual needs



Charles County
Public Schools

Working together to achieve excellence for every student.

Coming SY 2024-2025

Early Learning Center Waldorf

Located in the building between
J.P. Ryon Elementary School and John Hanson Middle School.

Offering more opportunities for students to have access to a full day Pre-K program.



Charles County
Public Schools

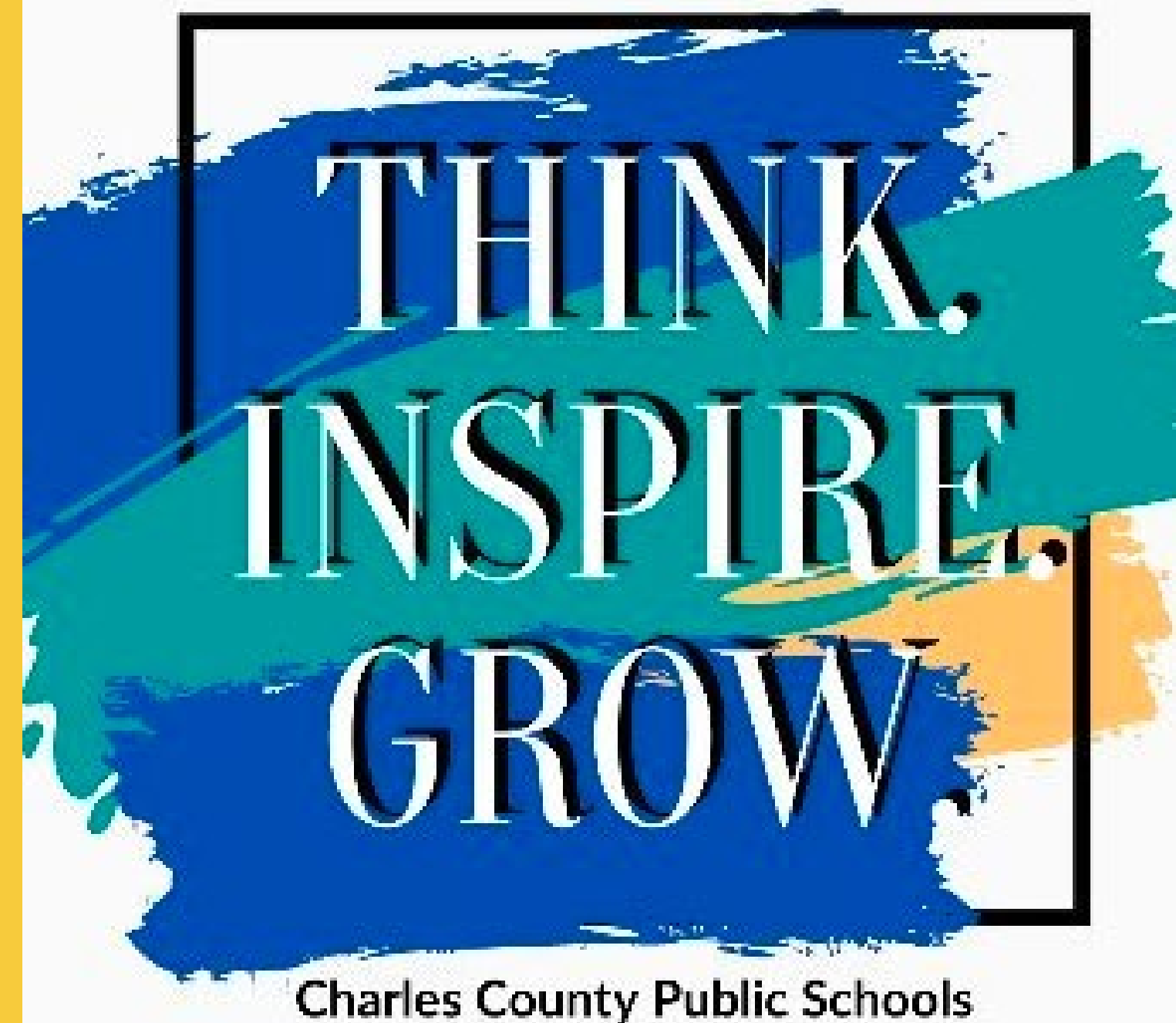
Working together to achieve excellence for every student.



Before you depart, we want to hear from you. Please respond to our feedback survey.
To respond electronically, use your smartphone to scan the QR Code.



Thank
You For
Attending!



Working Together To Achieve Excellence For Every Student . . .
We Appreciate Your Partnership!