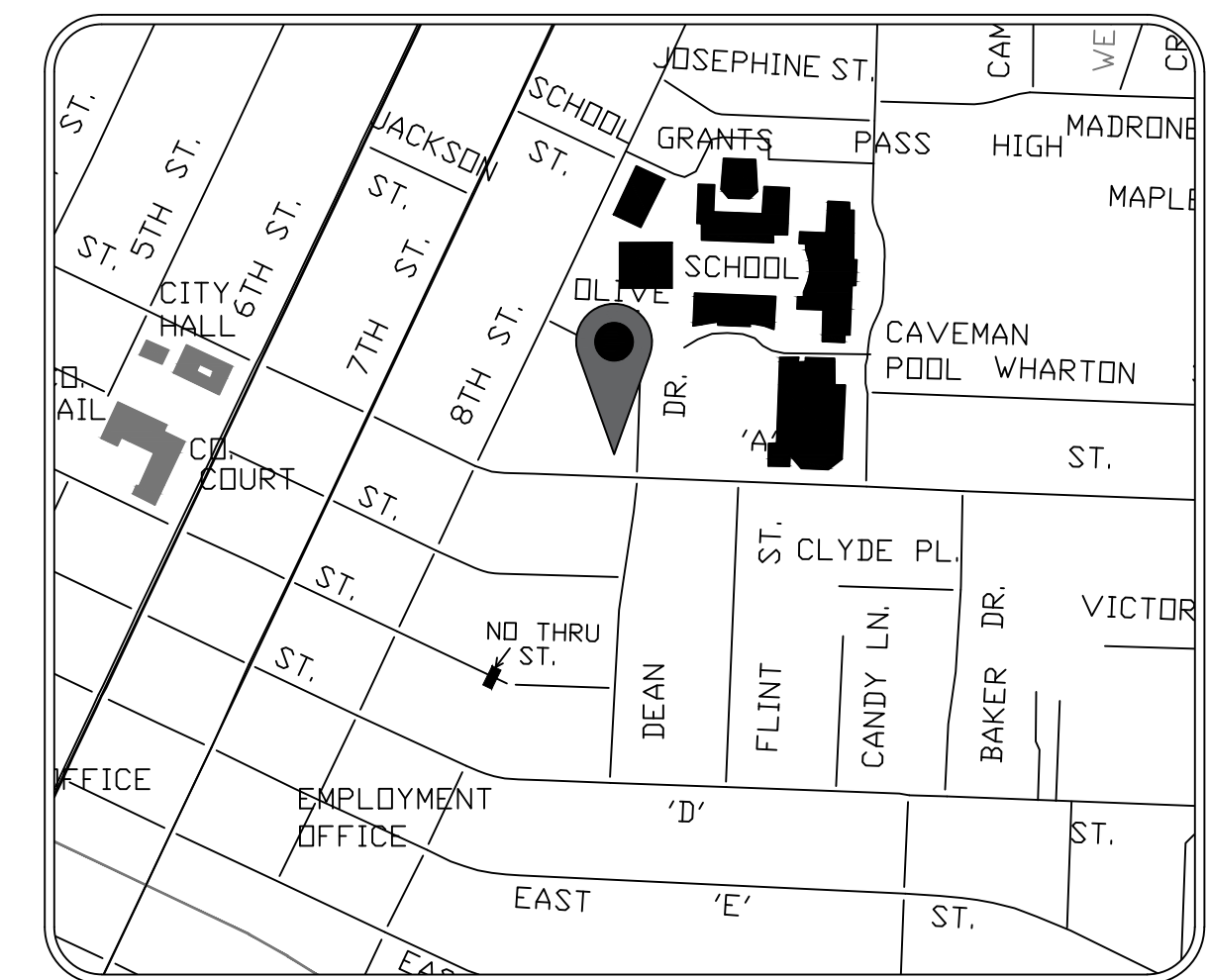
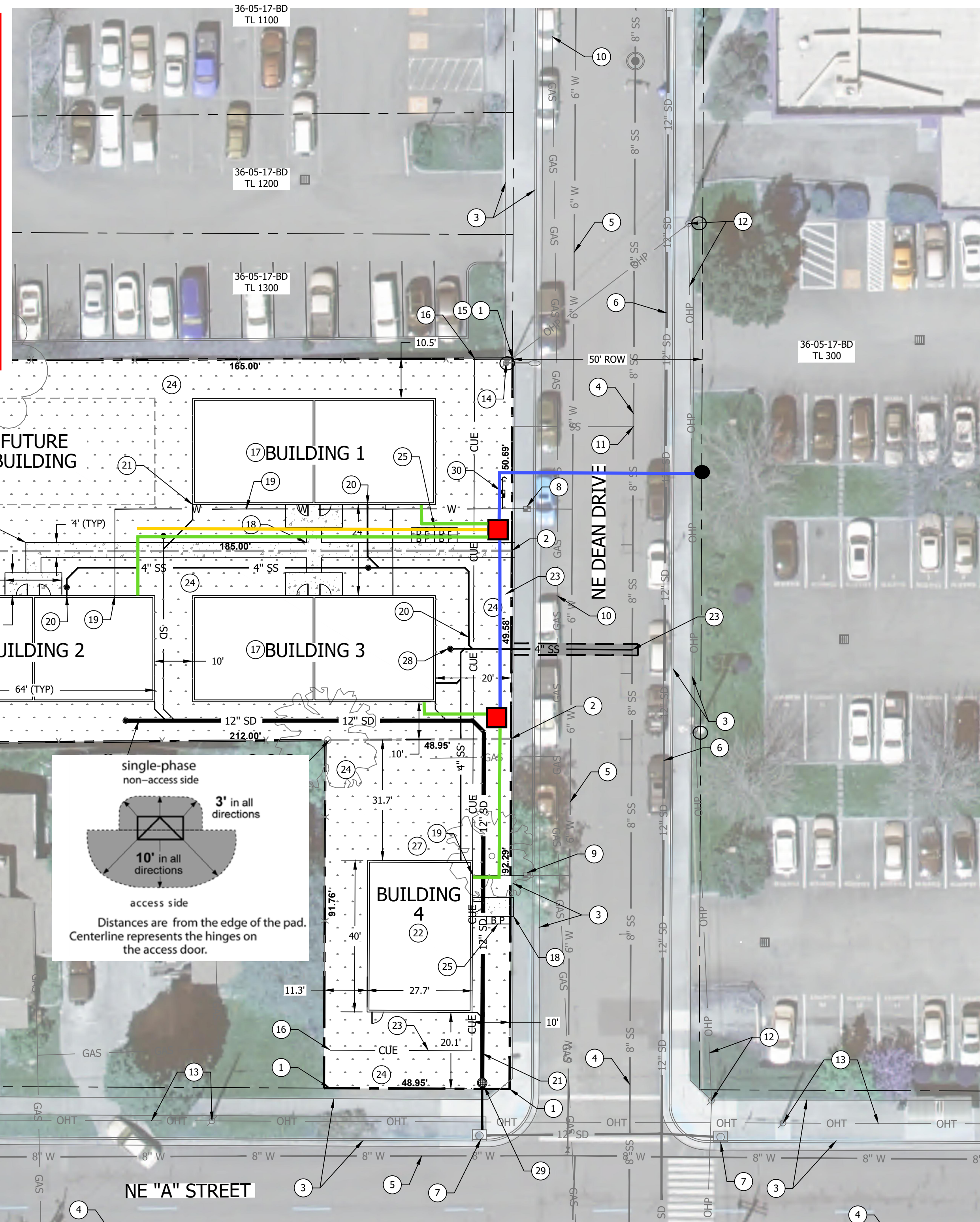


**CONTRACTOR NOTES:**

- CONTRACTOR RESPONSIBLE FOR OBTAINING ALL PERMITS AND LOCATES
- CONTRACTOR RESPONSIBLE FOR ALL TRENCHING AND/OR BORING
- CONTRACTOR RESPONSIBLE FOR OBTAINING AND INSTALLING ALL CONDUIT, SWEEPS AND 1000 LB TEST PULL ROPE PER PP&L SPECIFICATIONS
- ALL CONDUIT RUNS IN EXCESS OF 150' WILL REQUIRE FIBERGLASS SWEEPS, ALL PREFORMED SWEEPS WILL BE 36" RADIUS
- NO SINGLE CONDUIT RUN WILL EXCEED 270° IN TOTAL BENDS
- CAUTION TAPE 12"-18" ABOVE CONDUIT IN TRENCH
- ALL CROSSING OF STORM / SEWER WILL BE PERPENDICULAR AND MAINTAIN AT LEAST 12 VERTICAL INCHES OF CLEARANCE
- 1 PH VAULT LIDS WILL BE LOCATED WITHIN 10' OF VAULTS FOR PP&L TO INSTALL AT THE TIME OF CONSTRUCTION
- CALL 1-800-469-3981 REQUEST SERVICEMAN FOR TRENCH INSPECTION
- REFER TO ESR FOR SERVICE STANDARDS
- PPL TRANSFORMER VAULT 444-TRANS-PCORP #7999607
- STOP PRIMARY CONDUIT 2 FEET SHORT OF STAKED POLE LOCATION. LEAVE 90 DEGREE SWEEP FOR CREW TO INSTALL ON NEW POLE



**PROJECT LOCATION**  
SCALE: NTS

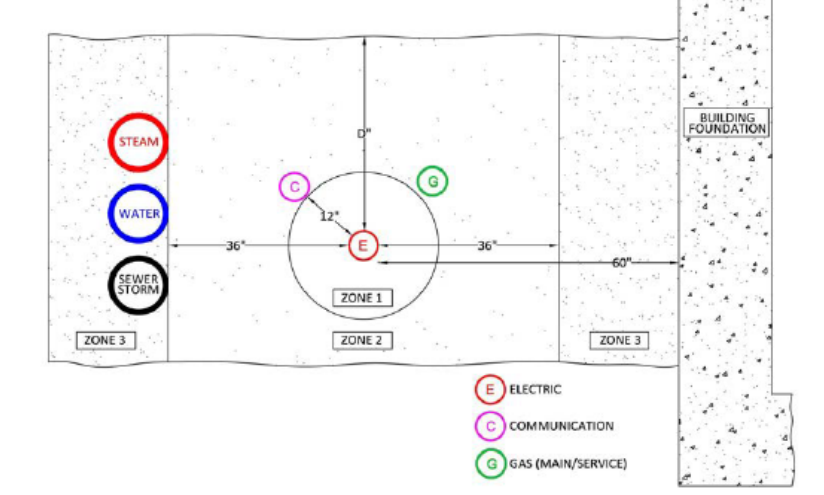
**LEGEND**

- EXISTING PPL POLE
- NEW PPL POLE
- 4X4 TRANSFORMER VAULT #7999607 TOTAL NUMBER-2
- 1 RUN 3" PVC PRIMARY CONDUIT MINIMUM TRENCH DEPTH 36"
- 1 RUN 3" PVC SCH 40 SERVICE CONDUIT MINIMUM TRENCH DEPTH 30"
- SPARE 3" PVC SCH 40 SERVICE CONDUIT MINIMUM TRENCH DEPTH 30"

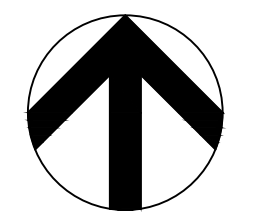
**Table 1—Radial Separation from Foreign Utilities and Structures**

Location	Foreign Utility or Structures Permitted	Minimum Separation	
		Paralleling	Crossing
Zone 1	No foreign lines or structures allowed Communication (telephone, fiber, cable) Streetlights	N/A	N/A
Zone 2	Minor structures (vaults, manholes, poles foundations, fence footings)	12" (Horizontal)	12" (Vertical)
	Gas (mains and services) Water lines (pressurized)	36"	12"
Zone 3 <sup>a</sup>	Sewer (sanitary and sewer) Steam and cryogenic	60" (Horizontal)	12" (Vertical)
	Building foundations	60" (Horizontal)	Prohibited
-	Retaining walls	60" (Horizontal)	Engineering required
	Gas transmission Other lines transporting flammable materials Railroads	Engineering required	Engineering required

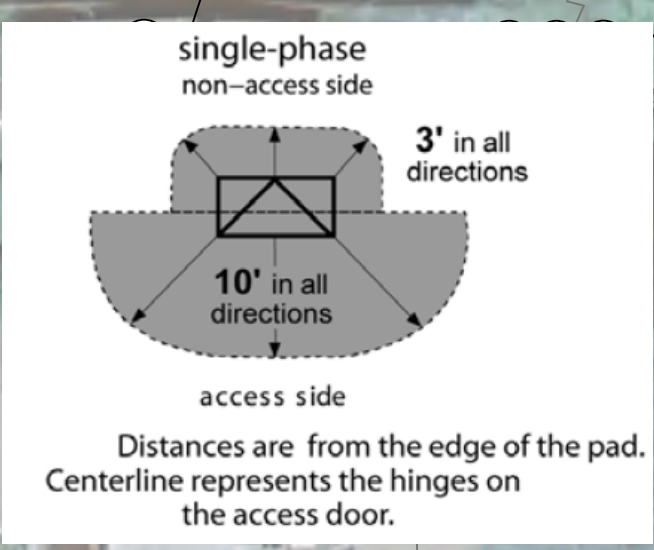
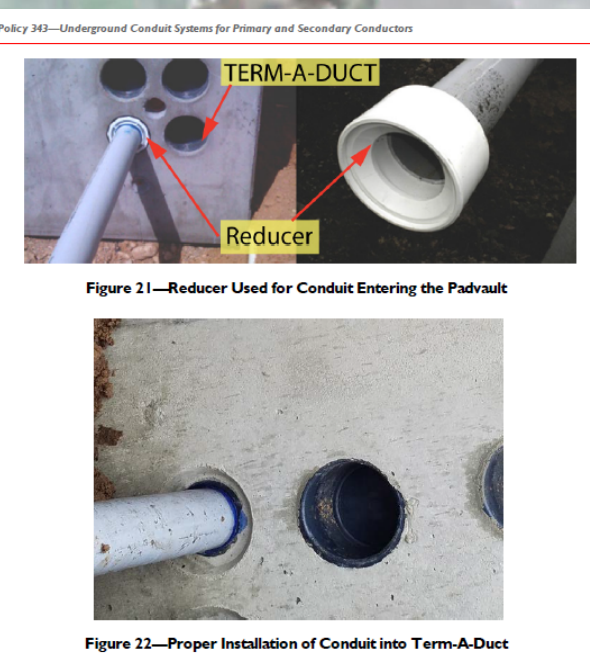
<sup>a</sup> Lines shall not be parallel directly above or below electric supply lines.



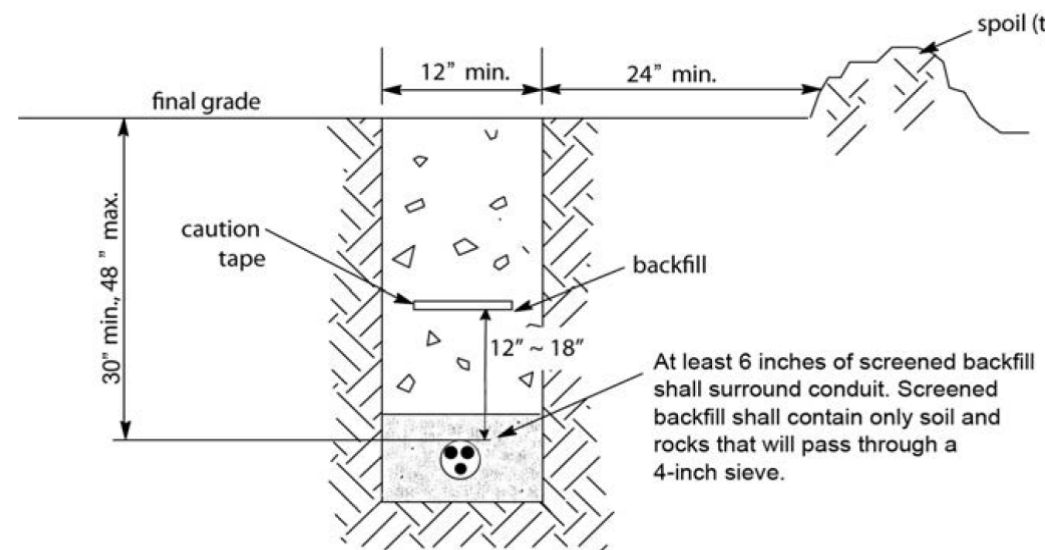
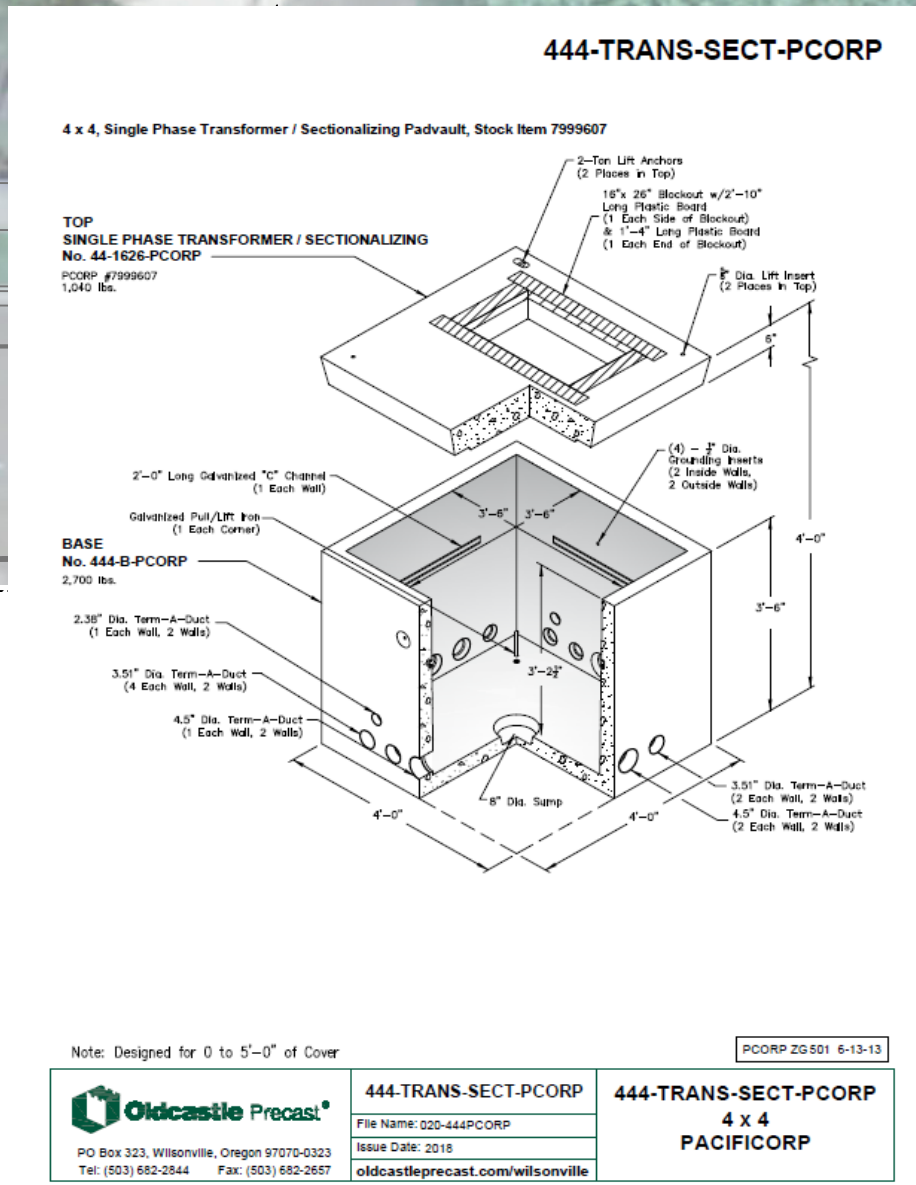
**MINIMUM SEPARATION OF PARALLELING LINES AND STRUCTURE**



0 20' 40'  
SCALE: 1" = 20'

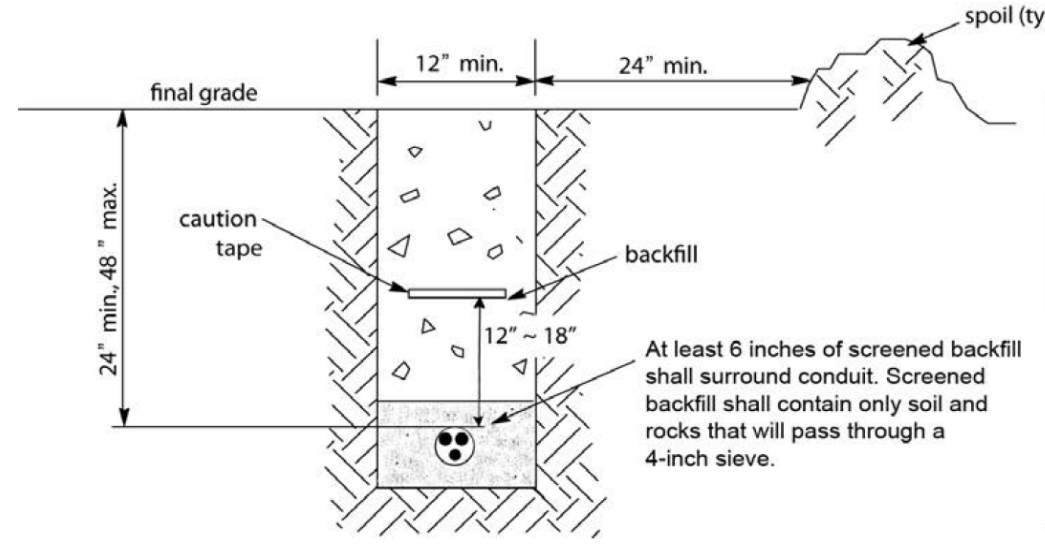


Distances are from the edge of the pad. Centerline represents the hinges on the access door.



**LEGEND**

- service (conduit / cable)
- backfill
- ▨ screened backfill
- ▩ undisturbed earth



**LEGEND**

- service (conduit / cable)
- backfill
- ▨ screened backfill
- ▩ undisturbed earth

**GPHS MODULAR ADDITION**

Revisions:

No.	Date	By	Description
1			

WO# 7012228  
714 NE Deans Dr.

