



Dr. René Gutiérrez  
Superintendent of Schools

AN EARLY COLLEGE DISTRICT  
**BROWNSVILLE**  
INDEPENDENT SCHOOL DISTRICT

Department of Curriculum, Instruction & Accountability  
1900 Price Road • Brownsville, Texas 78521 • (956) 548-8121



Dr. Norma Ibarra-Cantú  
Executive Director  
Secondary Education

***ECHS/P-TECH Leadership Cabinet Meeting***

October 11, 2023

3:00 p.m.

**I. Texas College & Career Readiness School Models (CCRSM)**

- a. Designation Applications
  - i. Application Window: October 3, 2023- January 12, 2024 at 5pm (CST)
  - ii. Submit drafts to Dr. Norma Ibarra-Cantu (ECHS) and Benita Villarreal (PTECH) by November 28, 2023
  - iii. C&I will obtain signatures for assurance letters from BISD and IHEs
  - iv. P-TECH campuses are responsible for signatures from their industry partner(s)
- b. Regional Convening- October 3, 2023
- c. Update websites by November 10, 2023

**II. Early College High School (ECHS)/Dual Enrollment/ Pathways in Technology (P-TECH)**

- a. Recruitment
  - i. Ensure students have correct coding on PEIMS by snapshot (October 27, 2023)
  - ii. Can still recruit students until PEIMS snapshot
  - iii. TSC- begin drafting list of new students for spring 2024
  - iv. UTRGV meeting- every campus needs to schedule a parent meeting
  - v. TSTC- Submit Permit to Register Form for all new students
- b. TSIA2
  - i. ECHS and P-TECH Reports
  - ii. Units will be provided for ECHS and P-TECH cohorts
  - iii. TSIA2- Middle School
    1. All 8<sup>th</sup> graders take PAA- September 25- November 3, 2023
    2. All 8<sup>th</sup> graders take TSIA2 ELAR- November 6- December 21, 2023
  - iv. 8 hours of tutorial required before retesting/ 10 hours for middle school
- c. Outcome Based Measures
- d. Advanced Placement Testing
  - i. November 15, 2023, 11:59 p.m. ET: Final ordering deadline
- e. AVID
  - i. Junior/Senior Opt Out
  - ii. Stole Requirements Revision

*BISD does not discriminate on the basis of race, color, national origin, gender, religion, age, disability or genetic information in employment or provision of services, programs or activities.*

*BISD no discrimina de acuerdo a raza, color, origen nacional, género, religión, edad, información genética, o incapacidad en el empleo o la disposición de servicios, programas o actividades.*

### **III. Pathways in Technology Early College High School (P-TECH)**

- a. Reminders
  - i. Notes from September ECHS for Directors
- b. Updates
  - i. Hanna ECHS
  - ii. Planning Stage: Rivera and Lopez
    - 1. Engineering
    - 2. Pipefitting
- c. P-TECH Sample

### **IV. Texas State Technical College (TSTC)**

### **V. University of Texas Rio Grande Valley (UTRGV)**

- a. Fall 2023 Enrollment
- b. Spring 2024 Applicants
- c. Admissions Criteria
- d. Timeline for Summer I and II 2024
- e. Fall 2024

### **VI. Texas Southmost College (TSC)**

- a. Instructor Observations
- b. Pathways
  - i. Associate of Arts in Business
  - ii. Associate of Arts in Criminal Justice
  - iii. Associate of Arts in Teaching EC-6th

*BISD does not discriminate on the basis of race, color, national origin, gender, religion, age, disability or genetic information in employment or provision of services, programs or activities.*

*BISD no discrimina de acuerdo a raza, color, origen nacional, género, religión, edad, información genética, o incapacidad en el empleo o la disposición de servicios, programas o actividades.*



AN EARLY COLLEGE DISTRICT

# BROWNSVILLE

INDEPENDENT SCHOOL DISTRICT

## ECHS/P-TECH Leadership Cabinet Meeting October 11, 2023



# Texas College & Career Readiness School Models

## Designation Applications

 **Andres Chavez**   
Associate, Programs – Educate Texas

 **Announcement** 

3 Oct 2023

### 2024 – 2025 CCRSM Program Application Cycle (PAC) Now Open

#### 2024-2025 CCRSM Program Application Cycle (PAC)

The 2024-2025 CCRSM Program Application Cycle (PAC) portal opens today, October 3, 2023 at 12PM (CST) and will close on January 12, 2024 at 5PM (CST). Below is a list of frequently asked question and please feel free to contact the CCRSM team at [ccrsm@tea.gov](mailto:ccrsm@tea.gov) for any additional questions.

**CCRSM Office Hours** will be offered in October and November to address your inquiries and provide guidance on the Program Application Cycle and other related topics.

**October 13, 2023 at 10:00 AM (CST)**

[Registration Link for October 13](#)

**October 27, 2023 at 10:00 AM (CST)**

[Registration Link for October 27](#)

**November 8, 2023 at 10:00 AM (CST)**

[Registration Link for November 8](#)

**November 29, 2023 at 10:00 AM (CST)**

[Registration Link for November 29](#)

**Join the CCRSM Team during these sessions to:**

- Gain clarity on the CCRSM program.
- Get answers to your specific questions.
- Understand the program application process.

# Texas College & Career Readiness School Models

## Designation Applications

- **E-mail a copy of application drafts to Dr. Norma Ibarra-Cantu (ECHS) and Benita Villarreal (P-TECH) by November 28, 2023**
- **C&I will obtain signatures for assurance letters from BISD and IHEs**
- **P-TECH campuses are responsible for signatures from their industry partner(s)**

# Texas College & Career Readiness School Models

Fall Regional Convening at Region 1 on October 3, 2023



# Texas College & Career Readiness School Models

## Websites

- All ECHS and PTECH websites must be updated by November 10, 2023

The screenshot shows the website for Veterans Memorial Early College High School. The browser address bar displays 'vsmemorialechs.bisd.us'. The navigation bar includes links for DISTRICT WEB MAIL, EMPLOYEE ONLINE, POLICY, BACK TO DISTRICT, SCHOOLS, DEPARTMENTS, and SEARCH. The main header features the school's logo and name, along with navigation links for About Us, News and Events, Our Staff, Programs and Activities, Resources, and Contact. A large banner for TXschools.gov is visible, with the text 'Learn More About Your Child's School.' and a QR code. A dropdown menu is open, listing various programs and services, including Early College High School, Athletics, Technology, Counseling, Academic Records, Home Access Center, At-Home Learning, P-TECH, Band, MCJROTC, Cheerleading, Parent Center, Local Programs and Services, VMECHS Library, Yearbook, Skills USA, and RGV Lead. Two red arrows point to the 'Early College High School' and 'P-TECH' options in the dropdown menu.

Visit [TXschools.gov](https://txschools.gov) and discover how your school is preparing them for the next grade level and success after high school.

Aquí hay 4 maneras fáciles de usar TXschool

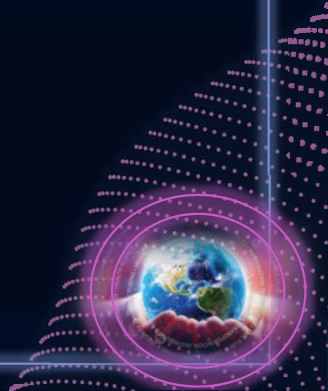


# ECHS/ Dual Enrollment/ P-TECH

## Recruitment

- All ECHS and P-TECH students need to be coded correctly by October 27, 2023 (PEIMS Snapshot)
- Can still recruit 9<sup>th</sup> grade students into cohort until PEIMS Snapshot

	ECHS (9th-12th)	PTECH (9th-12th)
BECHS	337	
Hanna	189	43
Lopez	339	
Pace	217	32
Porter	82	68
Rivera	365	
Veterans	162	28





# ECHS/ Dual Enrollment/ P-TECH

## Recruitment

- **TSC- begin drafting list of new students for spring 2024**
- **TSTC- Submit permit to register form for all new students**
- **UTRGV Meeting- all high school campuses must host a parent meeting with UTRGV**
  - Hanna: **October 24 @ 5:30 p.m.**
  - Lopez: **October 19 @ 5:00 p.m.**
  - Pace: **October 26 @ 5:30 p.m.**
  - Porter: **November 9 @ 11:15 a.m.**
  - Veterans: **October 16 @ 5:30 p.m.**

# ECHS/ Dual Enrollment/ P-TECH

Benchmark 4: Academic Infrastructure  
OBM: Achievement

## TSIA2

### TSI ECHS Report

ECHS 9th		ELAR				Math				All Subjects			
Building	Active 9/28/2023	# Tested	# Pass	% Pass	# Tested	# Pass	% Pass	# Tested	# Pass	% Pass	# Tested	# Pass	% Grade Pass
B'ville Early College Hs	88	74	31	35%	57	16	18%	56	16	18%	18	1	5%
Hanna High School	19	19	5	26%	7	1	5%	7	1	5%	7	1	5%
Lopez High School	99	98	36	36%	80	14	14%	80	12	12%	12	12	12%
Pace High School	4	4	2	50%	3	1	25%	3	1	25%	3	1	25%
Porter High School	18	16	5	28%	8	5	28%	7	4	22%	22	4	18%
Rivera High School	4	4	0	0%	1	0	0%	1	0	0%	0	0	0%
Veterans Memorial H S	9	8	2	22%	4	2	22%	4	1	11%	11	1	11%
<b>Total</b>	<b>241</b>	<b>223</b>	<b>81</b>	<b>34%</b>	<b>160</b>	<b>39</b>	<b>16%</b>	<b>158</b>	<b>35</b>	<b>15%</b>	<b>15%</b>		



ECHS 10th		ELAR				Math				All Subjects			
Building	Active 9/28/2023	# Tested	# Pass	% Pass	# Tested	# Pass	% Pass	# Tested	# Pass	% Pass	# Tested	# Pass	% Grade Pass
B'ville Early College Hs	80	79	58	73%	78	46	58%	78	39	49%	49	39	49%
Hanna High School	46	44	25	54%	29	16	35%	29	16	35%	35	16	35%
Lopez High School	61	61	26	43%	50	16	26%	50	14	23%	23	14	23%
Pace High School	60	60	21	35%	52	16	27%	52	12	20%	20	12	20%
Porter High School	12	10	2	17%	11	2	17%	10	2	17%	17	2	17%
Rivera High School	83	83	13	16%	57	13	16%	57	7	8%	8	7	8%
Veterans Memorial H S	45	45	17	38%	34	13	29%	34	9	20%	20	9	20%
<b>Total</b>	<b>387</b>	<b>382</b>	<b>162</b>	<b>42%</b>	<b>311</b>	<b>122</b>	<b>32%</b>	<b>310</b>	<b>99</b>	<b>26%</b>	<b>26%</b>		

ECHS 11th		ELAR				Math				All Subjects			
Building	Active 9/28/2023	# Tested	# Pass	% Pass	# Tested	# Pass	% Pass	# Tested	# Pass	% Pass	# Tested	# Pass	% Grade Pass
B'ville Early College Hs	80	74	70	88%	72	61	76%	72	59	74%	74	59	74%
Hanna High School	37	37	27	73%	34	22	59%	34	19	51%	51	19	51%
Lopez High School	88	87	54	61%	75	34	39%	74	30	34%	34	30	34%
Pace High School	60	53	33	55%	59	38	63%	52	27	45%	45	27	45%
Porter High School	18	16	7	39%	14	5	28%	13	5	28%	28	5	28%
Rivera High School	86	84	54	63%	83	41	48%	81	37	43%	43	37	43%
Veterans Memorial H S	33	30	21	64%	32	18	55%	30	17	52%	52	17	52%
<b>Total</b>	<b>402</b>	<b>381</b>	<b>266</b>	<b>66%</b>	<b>369</b>	<b>219</b>	<b>54%</b>	<b>356</b>	<b>194</b>	<b>48%</b>	<b>48%</b>		

ECHS 12th		ELAR				Math				All Subjects			
Building	Active 9/28/2023	# Tested	# Pass	% Pass	# Tested	# Pass	% Pass	# Tested	# Pass	% Pass	# Tested	# Pass	% Grade Pass
B'ville Early College Hs	78	76	73	94%	75	62	79%	75	61	78%	78	61	78%
Hanna High School	36	33	23	64%	30	20	56%	30	18	50%	50	18	50%
Lopez High School	90	90	68	76%	87	58	64%	87	57	63%	63	57	63%
Pace High School	93	93	67	72%	91	64	69%	91	57	61%	61	57	61%
Porter High School	36	36	26	72%	35	25	69%	35	22	61%	61	22	61%
Rivera High School	86	82	59	69%	78	54	63%	78	45	52%	52	45	52%
Veterans Memorial H S	26	26	21	81%	24	18	69%	24	16	62%	62	16	62%
<b>Total</b>	<b>445</b>	<b>436</b>	<b>337</b>	<b>76%</b>	<b>420</b>	<b>301</b>	<b>68%</b>	<b>420</b>	<b>276</b>	<b>62%</b>	<b>62%</b>		

### TSI P-TECH Report

P-TECH 9th		ELAR				Math				All Subjects			
Building	Active 9/28/2023	# Tested	# Pass	% Pass	# Tested	# Pass	% Pass	# Tested	# Pass	% Pass	# Tested	# Pass	% Grade Pass
Hanna High School	12	12	6	50%	1	0	0%	1	0	0%	1	0	0%
Lopez High School	1	1	0	0%	0	0	0%	0	0	0%	0	0	0%
Pace High School	16	16	4	25%	10	1	6%	10	1	6%	10	1	6%
Porter High School	4	3	0	0%	3	1	25%	3	0	0%	3	0	0%
Veterans Memorial H S	1	1	0	0%	0	0	0%	0	0	0%	0	0	0%
<b>Total</b>	<b>34</b>	<b>33</b>	<b>10</b>	<b>29%</b>	<b>14</b>	<b>2</b>	<b>6%</b>	<b>14</b>	<b>1</b>	<b>3%</b>	<b>14</b>	<b>1</b>	<b>3%</b>



P-TECH 10th		ELAR				Math				All Subjects			
Building	Active 9/28/2023	# Tested	# Pass	% Pass	# Tested	# Pass	% Pass	# Tested	# Pass	% Pass	# Tested	# Pass	% Grade Pass
Hanna High School	4	4	0	0%	3	0	0%	3	0	0%	3	0	0%
Pace High School	15	15	5	33%	12	4	27%	12	3	20%	12	3	20%
Porter High School	12	12	4	33%	11	7	58%	11	4	33%	11	4	33%
Rivera High School	1	1	0	0%	1	0	0%	1	0	0%	1	0	0%
Veterans Memorial H S	15	13	1	7%	8	1	7%	8	0	0%	8	0	0%
<b>Total</b>	<b>47</b>	<b>45</b>	<b>10</b>	<b>21%</b>	<b>35</b>	<b>12</b>	<b>26%</b>	<b>35</b>	<b>7</b>	<b>15%</b>	<b>35</b>	<b>7</b>	<b>15%</b>

P-TECH 11th		ELAR				Math				All Subjects			
Building	Active 9/28/2023	# Tested	# Pass	% Pass	# Tested	# Pass	% Pass	# Tested	# Pass	% Pass	# Tested	# Pass	% Grade Pass
Hanna High School	12	12	10	83%	10	6	50%	10	5	42%	10	5	42%
Porter High School	26	25	7	27%	20	6	23%	20	4	15%	20	4	15%
Veterans Memorial H S	12	5	0	0%	6	0	0%	2	0	0%	2	0	0%
<b>Total</b>	<b>50</b>	<b>42</b>	<b>17</b>	<b>34%</b>	<b>36</b>	<b>12</b>	<b>24%</b>	<b>32</b>	<b>9</b>	<b>18%</b>	<b>32</b>	<b>9</b>	<b>18%</b>

P-TECH 12th		ELAR				Math				All Subjects			
Building	Active 9/28/2023	# Tested	# Pass	% Pass	# Tested	# Pass	% Pass	# Tested	# Pass	% Pass	# Tested	# Pass	% Grade Pass
Hanna High School	9	9	6	67%	9	6	67%	9	6	67%	9	6	67%
Porter High School	11	11	4	36%	8	6	55%	8	3	27%	8	3	27%
<b>Total</b>	<b>20</b>	<b>20</b>	<b>10</b>	<b>50%</b>	<b>17</b>	<b>12</b>	<b>60%</b>	<b>17</b>	<b>9</b>	<b>45%</b>	<b>17</b>	<b>9</b>	<b>45%</b>



# **ECHS/ Dual Enrollment/ P-TECH**

Benchmark 4: Academic Infrastructure  
OBM: Achievement

## **TSIA2**

- **Units will be provided for ECHS and P-TECH cohorts**
- **TSIA2 Middle School**
  - All 8th graders take PAA- September 25- November 3, 2023
  - All 8th graders take TSIA2 ELAR- November 6- December 21, 2023



# ECHS/ Dual Enrollment/ P-TECH

## TSIA2



## TSIA2 Resources



Tier I & Tier II

Educational technology platform available to middle and high schools. IXL provides skill alignments. Look for Skill Plans, click on Test Prep, and select



Tier I & Tier II

Embedded curriculum provided by a designated ELAR and math teacher at each middle school and high school site.



Tier II

Upon completion of test, students are assigned Learning Locator™ codes that will deliver specific materials targeted to the growth areas identified on their Individual Score Reports. Find targeted materials using student codes at: <https://accuplacer.pearsonperspective.com/perspective/landingPage>

### Reminder:

8 hours of tutorial required before retesting/ 10 hours for middle school



# **ECHS/ Dual Enrollment/ P-TECH**

## **Outcome Based Measures**

- **Access: Student representation**
- **Achievement: High School Based Opportunities**
- **Attainment: Post-Secondary Opportunities**





# ECHS/ Dual Enrollment/ P-TECH

## Outcome Based Measures

### ECHS Outcome Based Measures

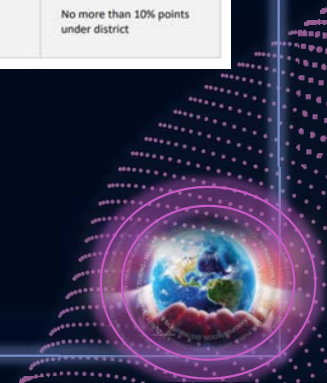
**ACCESS OUTCOMES-BASED MEASURES**  
Student representation in the ECHS program.

Data Indicators	Requirements	
	Designated ECHS	Designated with Distinction
	Must meet targets on "At-Risk Students" <b>and</b> "Economically-Disadvantaged Students" designated data indicators	Must meet all designated access data indicators and <b>two</b> access distinction data indicators
At-Risk Students	No more than 25% under district (grades 9-12)	No more than 20% under district (grades 9-12)
Economically-Disadvantaged Students	No more than 10% under district (grades 9-12)	No more than 5% under district (grades 9-12)
Emergent Bilingual Students	Not considered for designation	No more than 10% under district
Students with Disabilities	Not considered for designation	No more than 10% under district

### P-TECH Outcome Based Measures

**ACCESS OUTCOMES-BASED MEASURES**  
Student representation in the P-TECH program.

Data Indicators	Requirements	
	Designated P-TECH	Designated with Distinction
	Must meet targets on "At-Risk Students" <b>and</b> "Economically-Disadvantaged Students" designation data indicators	Must meet all designation access data indicators and <b>two</b> access distinction data indicators
At-Risk Students	No more than 25% under district (grades 9-12)	No more than 20% under district (grades 9-12)
Economically-Disadvantaged Students	No more than 10% under district (grades 9-12)	No more than 5% under district (grades 9-12)
Emergent Bilingual Students	Not considered for designation	No more than 10% points under district
Students with Disabilities	Not considered for designation	No more than 10% points under district



# ECHS/ Dual Enrollment/ P-TECH

## Outcome Based Measures

### ACHIEVEMENT OUTCOMES-BASED MEASURES

Student achievement through high school-based opportunities.

Data Indicators	Requirements	
	Designated ECHS	Designated with Distinction
	<i>Must meet targets on at least <b>three</b> achievement designation data indicators</i>	<i>Must meet targets on at least <b>three</b> achievement distinction data indicators</i>
Algebra I EOC Assessment	70% of students achieve "Approaches Grade Level Performance" or higher by the end of 9th grade	80% of students achieve "Approaches Grade Level Performance" or higher by the end of 9th grade
English II EOC Assessment	70% of students achieve "Approaches Grade Level Performance" or higher by the end of 11th grade	80% of students achieve "Approaches Grade Level Performance" or higher by the end of 11th grade
TSIA and STAAR EOC Criteria in Mathematics	60% of students meet TSIA score or STAAR EOC criteria in mathematics by the end of 11th grade	70% of students meet TSIA score or STAAR EOC criteria in mathematics by the end of 11th grade
TSIA and STAAR EOC Criteria in ELA/Reading	70% of students meet TSIA score or STAAR EOC criteria in ELA/Reading by the end of 11th grade	80% of students meet TSIA score or STAAR EOC criteria in ELA/Reading by the end of 11th grade
High School Graduation Rate	Campus is within 5% of statewide 4-year graduation rate	Campus exceeds the statewide 4-year graduation rate
College Readiness in Mathematics and ELA/Reading	40% of students meet TSIA criteria in mathematics and ELA/Reading (CCMR definition) by graduation	50% of students meet TSIA criteria in mathematics and ELA/Reading (CCMR definition) by graduation

### ATTAINMENT OUTCOMES-BASED MEASURES

Student attainment of postsecondary opportunities such as Dual Credit, up to 60 college credit hours, or an Associate Degree.

Data Indicators	Requirements	
	Designated ECHS	Designated with Distinction
	<i>Must meet targets on at least <b>three</b> attainment designation data indicators</i>	<i>Must meet targets on at least <b>three</b> attainment distinction data indicators</i>
Earn 9 College Credits	30% of students earn 9 college credits (any) by the end of 10th grade	40% of students earn 9 college credits (any) by the end of 10th grade
Earn at least 3 College Credits in ELA or Mathematics	40% of students earn an ENGL or MATH college credit by the end of 11th grade	50% of students earn an ENGL or MATH college credit by the end of 11th grade
Earn 15 College Credits	50% of students earn 15 college credits (any) by graduation	60% of students earn 15 college credits (any) by graduation
Core Completion	50% of students achieve core completion by graduation	60% of students achieve core completion by graduation
Earn an Associate Degree	50% of students earn an associate degree by graduation	60% of students earn an associate degree by graduation
Persistence	75% of students enrolled remain in the ECHS program through graduation	85% of students enrolled remain in the ECHS program through graduation

### ACHIEVEMENT OUTCOMES-BASED MEASURES

Student achievement through high school-based opportunities.

Data Indicators	Requirements	
	Designated P-TECH	Designated with Distinction
	<i>Must meet targets on at least <b>three</b> achievement designation data indicators</i>	<i>Must meet targets on at least <b>three</b> achievement distinction data indicators</i>
Algebra I EOC Assessment	70% of students achieve "Approaches Grade Level Performance" or higher by the end of 10th grade	80% of students achieve "Approaches Grade Level Performance" or higher by the end of 10th grade
English II EOC Assessment	70% of students achieve "Approaches Grade Level Performance" or higher by the end of 11th grade	80% of students achieve "Approaches Grade Level Performance" or higher by the end of 11th grade
College Readiness in Mathematics and ELA/Reading	40% of students meet TSIA criteria in mathematics and ELA/Reading (CCMR definition) by graduation	50% of students meet TSIA criteria in mathematics and ELA/Reading (CCMR definition) by graduation
High School Graduation Rate	Campus is within 5% of statewide 4-year graduation rate	Campus exceeds the statewide 4-year graduation rate
CTE Program Status by 11th grade	55% of students meet CTE concentrator or completer status by the end of 11th grade	65% of students meet CTE concentrator or completer status by the end of 11th grade
CTE Program Status by Graduation	65% of students graduate as a CTE concentrator or completer by graduation	75% of students graduate as a CTE concentrator or completer by graduation

### ATTAINMENT OUTCOMES-BASED MEASURES

Student attainment of postsecondary opportunities such as Industry-Based Certifications, Dual Credit, Level I or II Certificates, and/or Associate Degree.

Data Indicators	Requirements	
	Designated P-TECH	Designated with Distinction
	<i>Must meet targets on at least <b>three</b> attainment designation data indicators</i>	<i>Must meet targets on at least <b>three</b> attainment distinction data indicators</i>
Earn 3 College Credits	50% of students earn 3 college credits (any) by the end of 10th grade	60% of students earn 3 college credits (any) by the end of 10th grade
Earn 9 College Credits	40% of students earn 9 college credits (any) by the end of 11th grade	50% of students earn 9 college credits (any) by the end of 11th grade
Earn 15 College Credits	40% of students earn 15 college credits (any) by graduation	50% of students earn 15 college credits (any) by graduation
Earn a Certificate or Associate Degree	30% of students earn an associate degree or Level I or II certificate or associate degree by graduation	40% of students earn an associate degree or Level I or II certificate or associate degree by graduation
Earn an Industry-Based Certification (IBC)	50% of students earn an Industry-Based Certification by graduation	60% of students earn an Industry-Based Certification by graduation
Persistence	75% of students enrolled remain in the P-TECH program through graduation	85% of students enrolled remain in the P-TECH program through graduation

Benchmark 4: Academic Infrastructure  
OBM: Achievement





# ECHS/ Dual Enrollment

## Advanced Placement Testing

- **November 15, 2023: Final Ordering Deadline**

**Students enrolled in Dual Enrollment and challenge an AP exam:**

A student enrolled in a dual enrollment course may challenge the AP exam related to the dual enrollment course and will receive the Level IV GPA weight for a passing score of a 3, 4, or a 5 if they meet one of the following criteria.

- 1) Students enrolled in a fall semester or a year-long dual enrollment course must challenge the AP exam the academic year they take the dual enrollment course. These students must commit to the AP exam during the fall semester by the deadline determined by the College Board.
- 2) Students enrolled in a spring semester or summer school dual enrollment course have until the spring semester of the following academic year to challenge the AP exam and have a passing score count on their GPA. These students must commit to the AP exam during the fall semester after having completed the dual enrollment course by the deadline determined by the College Board.

If a dual enrollment student challenges the AP exam after the above stated time frames and receives a passing score, Level IV GPA weight will not be awarded. *The dual enrollment teacher should work with the campus Dean of Instruction and the AP teachers to explain the above options to their students and to have the Commitment Form completed.*

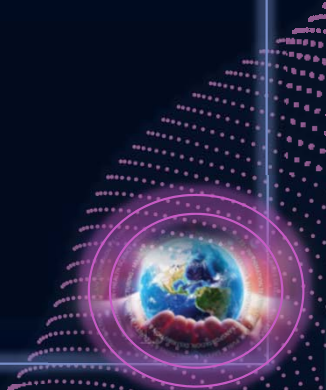
\*\* Courses that will not count for GPA weight will be designated with a course number containing a U within the course number.

# ECHS/ Dual Enrollment

## AVID

- **Junior/Senior Opt Out**
- **Stole Requirements Revisions**

Benchmark 2: Partnerships  
OBM: Attainment





# P-TECH

## Updates

- **Hanna ECHS**
- **Planning Stage: Rivera and Lopez**
  - **Engineering**
  - **Pipefitting**



**P-TECH**

## **P-TECH Sample**

### San Antonio PTECH Sample

[San Antonio Independent School District \(saisd.net\)](https://schools.saisd.net)

<https://schools.saisd.net/page/005.ptech>

**Benchmark 1: School Design**  
**OBM: Achievement**



# Dual Enrollment at Texas State Technical College

**Monica Arizpe**

*Dual Enrollment Recruiting Representative*

**Harlingen**

[meresendiz@tstc.edu](mailto:meresendiz@tstc.edu)

**Robbie Mesa**

*Director of Dual Enrollment*

**Harlingen**

[robbie.mesa@tstc.edu](mailto:robbie.mesa@tstc.edu)





# *Secondary Educational Partnerships*

**Dr. Michael E. Aldape**

**Assistant Provost for Secondary Educational Partnerships**

**UTRGV** : Secondary Educational Partnerships



# Fall 2023 Enrollment

## Campuses Represented:

- **BECHS (155)**
- **Hanna (1)**
- **Lopez (1)**
- **Pace (1)**
- **Veterans (1)**

Description	Count
Number of Students Enrolled	159
Number of Course Sections Offered	29
Number of Juniors Enrolled	77
Number of Seniors Enrolled	82

# Spring 2024 Applicants

## Campuses Represented

Lopez- 5

Pace - 1

Veterans-  
3



# Admissions Criteria

**Students seeking Dual Credit opportunities with UTRGV will have an individual academic profile created based on a variety of factors, including but not limited to:**

- **High School Class Rank;**
  - **GPA;**
  - **College Entrance Exams (SAT/ACT) (PSAT/ACT-PLAN);**
  - **Extracurricular Activities;**
  - **Community Involvement;**
- 
- **Academic profiles are created with submitted documentation and admission decisions are made based on that profile and accomplishments to date.**

# Application Process

1

**Apply**  
at [goapplytexas.org](http://goapplytexas.org)

2

**Submit DC Authorization Form signed by the Parent/Guardian, Principal, and Counselor.**

3

**Submit official HS Transcript**

- Must include GPA, ranking, and graduation type

4

**Submit Placement Scores**

- Must submit all TSI scores

5

**Submit proof of Meningitis Vaccine**

- Must be current 10 days prior to the 1st day of class.

## Timeline for Summer I and II 2024

**Upcoming Parent Meetings:**

**Hanna, Pace,  
Porter**

October 2023

**Students  
submit Apply  
Texas  
Application**

November 2023

**Counselors  
submit  
student  
documents**

January 2024

**Registration for  
Summer I and II  
opens on  
February 26**

February 2024

**Admitted and  
cleared students  
attend Summer I  
and II Orientation**

Feb.-Apr 2024

**Enrollment reports  
sent to counselors;  
Registration  
continues**

Mar-May 2024

**Summer I 2024  
begins**

June 3 – July 9,  
2024

**Summer II 2024  
begins**

July 11 – Aug.  
16, 2024

Fall of 2024

**Current Seniors who have taken at least one class as Dual Credit, and are in good standing, have had their UTRGV applications rolled over for Fall 2024.**

Description	Dates/Info
UTRGV Scholarship Application opens	Oct. 1, 2023
UTRGV Luminary Scholars	Award up to \$137,000
Greater Texas Foundation Scholarship	Award up to \$4,000 per academic year
Work with your recruiter to get more information on applications and scholarships	Sept.-Nov. 2023

## Secondary Educational Partnerships Staff



Dr. Michael E. Aldape  
Assistant Provost, Secondary Educational  
Partnerships  
[michael.aldape@utrgv.edu](mailto:michael.aldape@utrgv.edu)



Rose M. Pulido, M. Ed.  
Program Manager – Secondary Educational  
Partnerships (Brownsville)  
[rose.pulido01@utrgv.edu](mailto:rose.pulido01@utrgv.edu)  
(956)882-7732



a. Instructor Observations

b. Pathways



TEXAS  
SOUTHMOST  
COLLEGE



**BISD Dual Enrollment Pathway**  
**Associate of Arts in Business (AA.BUSI)**

High School/Freshman Level

Course #	TSC Course		Dual Enrollment Enrolled Semester	Credit Hours	Contact Hours	
	Course Title				Lec, Lab	Total Hours
SPCH 1315	Public Speaking		Fall	3	3 Lec	48
				3		48
SPAN 2313	Spanish for Native/Heritage Speakers I		Spring	3	3 Lec	48
				3		48
<b>Total Credit/Contact Hours</b>				<b>6</b>		<b>96</b>

High School/Sophomore Level

ARTS 1301/MUSI 1306	Art Appreciation/Music Appreciation		Fall or Spring	3	3 Lec	48
				3		48
<b>Total Credit/Contact Hours</b>				<b>3</b>		<b>48</b>

High School/Junior Level

HIST 1301	U.S. History I		Fall	3	3 Lec	48
GOVT 2305	Federal Government		Fall	3	3 Lec	48
				6		96
HIST 1302	U.S. History II		Spring	3	3 Lec	48
GOVT 2306	Texas Government		Spring	3	3 Lec	48
ENGL 1301	Composition I		Spring	3	3 Lec	48
MATH 1314	College Algebra		Spring	3	3 Lec	48
				12		192
<b>Total Credit/Contact Hours</b>				<b>18</b>		<b>288</b>

High School/Senior Level

BIOL 1306	Biology I for Science Majors		Fall	3	3 Lec	48
ECON 2301	Principles of Macroeconomics		Fall	3	3 Lec	48
ENGL 1302	Composition II		Fall	3	3 Lec	48
				9		144
MATH 1342	Elementary Statistical Methods		Spring	3	3 Lec	48
BIOL 1307	Biology II for Science Majors		Spring	3	3 Lec	48
ENGL 2341	Forms of Literature		Spring	3	3 Lec	48
				9		144
<b>Total Credit/Contact Hours</b>				<b>18</b>		<b>288</b>

<b>Grand Total Credit/Contact Hours</b>				<b>45</b>		<b>720</b>
---	--	--	--	-----------	--	------------

**Graduate from High School and Transfer to Texas Southmost College or earn credit through Concurrent Enrollment**

Texas Southmost College

Course #	TSC Course		Dual Enrollment Enrolled Semester	Credit Hours	Contact Hours	
	Course Title				Lec, lab	Total Hours
BCIS 1305	Business Computer Applications		Fall	3	3 Lec	48
BUSI 1301	Business Principles		Fall	3	3 Lec	48
ACCT 2301	Principles of Financial Accounting		Fall	3	3 Lec	48
				9		144
ECON 2302	Principles of Microeconomics		Spring	3	3 Lec	48
ACCT 2302	Principles of Managerial Accounting		Spring	3	3 Lec	48
				6		96
<b>Total Credit/Contact Hours</b>				<b>15</b>		<b>240</b>
<b>Grand Total Credit/Contact Hours</b>				<b>60</b>		<b>960</b>

**Graduate from Texas Southmost College and transition into a four-year degree (Bachelor)**



**BISD Dual Enrollment Pathway  
Associate of Arts in Criminal Justice (AA.CRIJ)**

Course #	TSC Course Course Title	Dual Enrollment Enrolled Semester	Credit Hours	Contact Hours	
				Lec, Lab	Total Hours
SPCH 1315	Public Speaking	Fall	3	3 Lec	48
			3		48
SPAN 2313	Spanish for Native/Heritage Speakers I	Spring	3	3 Lec	48
			3		48
<b>Total Credit/Contact Hours</b>			<b>6</b>		<b>96</b>
ARTS 1301/MUSI 1306	Art Appreciation/Music Appreciation	Fall	3	3 Lec	48
			3		48
PSYC 2301	General Psychology	Spring	3	3 Lec	48
			3		48
<b>Total Credit/Contact Hours</b>			<b>6</b>		<b>96</b>
HIST 1301	U.S. History I	Fall	3	3 Lec	48
GOVT 2305	Federal Government	Fall	3	3 Lec	48
			6		96
HIST 1302	U.S. History II	Spring	3	3 Lec	48
GOVT 2306	Texas Government	Spring	3	3 Lec	48
ENGL 1301	Composition I	Spring	3	3 Lec	48
			9		144
<b>Total Credit/Contact Hours</b>			<b>15</b>		<b>240</b>

BIOL 1306	Biology I for Science Majors	Fall	3	3 Lec	48
ENGL 1302	Composition II	Fall	3	3 Lec	48
			6		96
MATH 1342	Elementary Statistics	Spring	3		48
BIOL 1307	Biology II for Science Majors	Spring	3	3 Lec	48
ENGL 2341	Forms of Literature	Spring	3	3 Lec	48
			9	3 Lec.	144
<b>Total Credit/Contact Hours</b>			<b>15</b>		<b>240</b>
<b>Grand Total Credit/Contact Hours</b>			<b>42</b>		<b>672</b>
<b>Graduate from High School and Transfer to Texas Southmost College or earn credit at your campus or a summer session</b>					
TSC Course		Dual Enrollment Enrolled Semester	Credit Hours	Contact Hours	
Course #	Course Title			Lec, lab	Total Hours
CRIJ 1301	Intro to Criminal Justice	Summer	3	3 Lec	48
			3		48
CRIJ 1313	Juvenile Justice System	Fall	3	3 Lec	48
CRIJ 2313	Correctional Systems & Practices	Fall	3	3 Lec	48
			6		96
CRIJ 1306	Court Systems & Practices	Spring	3	3 Lec	48
CRIJ 1310	Fundamentals of Criminal Law	Spring	3	3 Lec	48
CRIJ 2328	Police Systems & Practices	Spring	3	3 Lec	48
			9		144
<b>Total Credit/Contact Hours</b>			<b>18</b>		<b>288</b>
<b>Grand Total Credit/Contact Hours</b>			<b>60</b>		<b>960</b>
<b>Graduate from Texas Southmost College and transition into a four-year degree (Bachelor)</b>					

High School/Freshman Level  
High School/Sophomore Level  
High School/Junior Level

High School/Senior Level

Texas Southmost College

High School/Freshman Level

Course #	TSC Course Course Title	Dual Enrollment Enrolled Semester	Credit Hours	Contact Hours	
				Lec, Lab	Total Hours
SPCH 1315	Public Speaking	Fall	3	3 Lec	48
			3		48
<b>Total Credit/Contact Hours</b>			<b>3</b>		<b>48</b>

High School/Sophomore Level

ARTS 1301	Art Appreciation	Fall	3	3 Lec	48
			3		48
PSYC 2301	General Psychology	Spring	3	3 Lec	48
			3		48
<b>Total Credit/Contact Hours</b>			<b>6</b>		<b>96</b>

High School/Junior Level

HIST 1301	U.S. History I	Fall	3	3 Lec	48
GOVT 2305	Federal Government	Fall	3	3 Lec	48
			6		96
HIST 1302	U.S. History II	Spring	3	3 Lec	48
MATH 1314	College Algebra	Spring	3	3 Lec	48
GOVT 2306	Texas Government	Spring	3	3 Lec	48
ENGL 1301	Composition I	Spring	3	3 Lec	48
			12		192
<b>Total Credit/Contact Hours</b>			<b>18</b>		<b>288</b>

High School/Senior Level

BIOL 1306	Biology I for Science Majors	Fall	3	3 Lec	48
ENGL 1302	Composition II	Fall	3	3 Lec	48
			6		96
BIOL 1307	Biology II for Science Majors	Spring	3	3 Lec	48
ENGL 2341	Forms of Literature	Spring	3	3 Lec	48
			6		96
<b>Total Credit/Contact Hours</b>			<b>12</b>		<b>192</b>

**Grand Total Credit/Contact Hours** **39** **624**  
 Graduate from High School and Transfer to Texas Southmost College or earn credit through Concurrent Enrollment

Texas Southmost College

Course #	TSC Course Course Title	Dual Enrollment Enrolled Semester	Credit Hours	Contact Hours	
				Lec, lab	Total Hours
EDUC 1300	Learning Frameworks	Fall	3	3 Lec	48
EDUC 1301	Introduction to Teaching Professions	Fall	3	3 Lec	48
PHYS 1315	Physical Science I	Fall	3	3 Lec	48
MATH 1350	Mathematics for Teachers I	Fall	3	3 Lec	48
			12		192
EDUC 2301	Intro to Special Populations	Spring	3	3 Lec	48
PHYS 1317	Physical Science II	Spring	3	3 Lec	48
MATH 1351	Fundamentals of Mathematics II	Spring	3	3 Lec	48
			9		144
<b>Total Credit/Contact Hours</b>			<b>21</b>		<b>336</b>
<b>Grand Total Credit/Contact Hours</b>			<b>60</b>		<b>960</b>
<b>Graduate from Texas Southmost College and transition into a four-year degree (Bachelor)</b>					

The background is a dark blue gradient with various abstract elements. In the top left, there is a grid of small purple dots. In the top center, there are several concentric purple arcs. In the top right, there are two blue circles of different sizes with horizontal lines extending from them. In the bottom left, there are two blue circles of different sizes with horizontal lines extending from them. In the bottom right, there is a grid of small purple dots. A large, horizontal, blue-to-purple gradient bar is positioned below the text.

THANK YOU