



Student and Parent Newsletter Monday, October 9-13, 2023 Quarter 1 Week 7

Elementary Academy Pioneers Level Up

Elementary Principal, Dr. Peart

[kpeart@npfeschools.org](mailto:kpeart@npfeschools.org)

(313) 833-1100, Ext. 1141

Door opens at 7:50 AM for K-8  
Tardy after 8:05 AM  
Dismissal is at 3:35 PM for K-8

School Theme: Level UP

What It Means to Level Up

- L - Learn from mistakes
- E - Effort increases to push forward
- V - Vary strategies to succeed
- E - Earn knew knowledge at each level
- L - Let go of a fixed mindset

U - Use hints, tools, and resources to overcome obstacles

P - Persevere to keep leveling up

Homework Expectations

- Students are expected to complete homework by their classroom teacher.
- Reading (Read and Response) and Math (C3).
- The goal is for each class to attain a 95% return rate on homework at the end of the week.
- Homework will be checked **EVERY DAY**- thank you for helping your child build their work ethic by completing their homework every night.

Monday 10/9  
Read & Response/C3

Tuesday 10/10  
Read & Response/C3

Wednesday 10/11  
Read & Response/C3

Thursday 10/12  
Read & Response/C3

Friday 10/13  
Read & Response/C3

Academics and Safety

Week 5 was great, staff and students leveled up! We take academics and safety seriously. Please remind students that they are required to meet the behavioral expectations of DEPSA. Students are expected to come to school prepared, focused, and ready to learn. Please remind your student that they must keep their hands to themselves and that threats of any kind will not be tolerated. School personnel will enforce the code of conduct.

JOIN US FOR CURRICULUM NIGHT WEDNESDAY OCTOBER 25, 2023



Meet the Team Elementary Academy Team!

<a href="#">Ms. Eligado- 3<sup>rd</sup></a>	<a href="#">Ms. Rodulfo- 3<sup>rd</sup></a>	<a href="#">Ms. Szumski-3<sup>rd</sup></a>	
<a href="#">Ms. Bartolome- 4<sup>th</sup></a>	<a href="#">Ms. Lockard- 4<sup>th</sup></a>	<a href="#">Ms. Mora-4<sup>th</sup></a>	<a href="#">Ms. Naidoo-4<sup>th</sup></a>
Ms. Angle- 5 <sup>th</sup>	<a href="#">Ms. Mathis- 5<sup>th</sup></a>	<a href="#">Dr. Reyes-4<sup>th</sup></a>	

Federal Grants & Title I

Thank you for attending and supporting our Annual Ice Cream Social for Parent Engagement, and Federal Programs. At NPFE we believe it is important to collaborate and strengthen our parent and school partnership. Your input and feedback is important to us as we implement programs to support students academically and socially. **Please complete the survey, we need to hear from you what is going well and what we need to improve from parent perspectives:**

Click to view the [presentation](#). Click here to complete the [survey](#).

Attendance Challenge: DON'T GET TO 15 ABSENCES

Currently 67% of students are identified as Chronrically Absent. SEND YOUR CHILD TO SCHOOL DAILY! our grade level attendance challenge has kicked off!! Classes with 100% attendance by the end of the week will be rewarded.

Your child can be retained for poor attendance. Chronic absenteeism can cause poor grades and is defined as missing at least 10 percent (18 days) of days in a school year for any reason, including excused and unexcused absences. If you need support please contact Dr. Peart at [kpeart@npfeschools.org](mailto:kpeart@npfeschools.org)

Instructional Model



Our New Paradigm Instructional Model are the pillars for the work we do every day, to set high standards for our children. We focus on setting clear goals, making sure effective instruction takes place in our classroom, ensuring we are making data driven decisions, providing timely intervention as needed, and celebrating our progress.

NPFE Annual Goals

- **NWEA-** 65% or more of our students will meet their NWEA GOALS fall to spring targets in both reading and math
- **M-Step/PSAT-** proficiency will increase in both ELA and Math by 20% for grades 3-10
- **Attendance Goals-** Average daily attendance will be at 95% by June 2024; Chronic absenteeism will decrease by 15% in comparison to the 2022-2023 school year
- **Coaching Cycle-** Leaders will complete a minimum of 8 complete coaching cycles per teacher during the 2023-2023 school year.

Cell phone collection

Cell will be collected during first period and returned during last period. If you need to contact your child, please contact the school.

Drills

At DEPSA we take academics and safety seriously. We will practice fire, tornado, and active shooting drills with students. An emergency can happen at any time. We will practice drills rather rain or shine. This will help prepare students to know what to do before, during, and after an emergency.

Important Dates & Information:

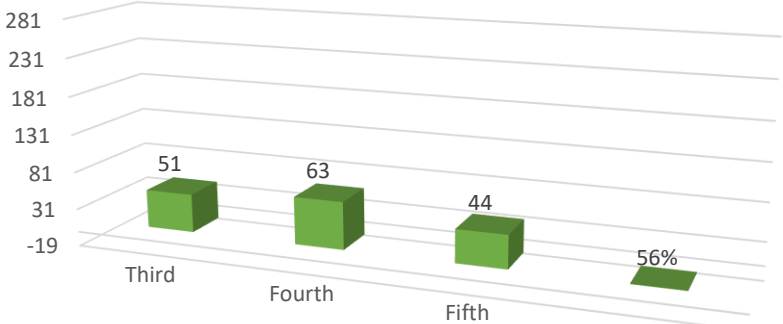
**Friday, October 13**  
Parent Teacher Conference will be held on  
October 13, 2023 at  
8:30 AM-5:30 PM  
**NO SCHOOL FOR STUDENTS**

It's time for **Parent Teacher Conference on Friday October, 13, 2023!** Please take a moment to sign up by clicking below.

**Note:** Prior to the day of the meeting, you will receive a confirmation email from the teacher.

[https://www.ptcfast.com/schools/Detroit Edison Public School Academy 10](https://www.ptcfast.com/schools/Detroit_Edison_Public_School_Academy_10)

Chronically Absent Students October 9, 2023



Deanslist

Connect with your child’s teacher through Deanslist. Invites and validation letters will be sent home the week of Sept 11 with students for families to connect to Deanslist.

DeansList for Families Mobile App <https://youtu.be/PofOGNOfoRg>

Student Schedule

TIME	3	4	5
7:50 AM	ARRIVAL	ARRIVAL	ARRIVAL
7:50-8:05 AM	BREAKFAST	BREAKFAST	BREAKFAST
8:05 AM	TARDY	TARDY	TARDY
8:00-8:15 AM	SEL/GAT/CLASS COUNCIL	SEL/GAT/CLASS COUNCIL	SEL/GAT/CLASS COUNCIL
8:15 - 9:45 AM	SFA	SFA	SFA
9:50 - 10:50 AM	MATH	MATH	MATH
10:55 - 11:35 AM	MATH INTERVENTION	MATH INTERVENTION	MATH INTERVENTION
11:40 - 12:05 AM	LUNCH	LUNCH	LUNCH
12:05 - 12:20 PM	RECESS	RECESS	RECESS
12:25 - 12:45 PM	READING INTERVENTION	READING INTERVENTION	READING INTERVENTION
12:45 - 1:25 PM	SPECIAL	WRITING	SCIENCE
1:30 - 2:15 PM	WRITING	SPECIAL	WRITING
2:15 - 2:55 PM	SCIENCE	SCIENCE	SPECIAL
2:55 - 3:35 PM	SOC STUDIES	SOC STUDIES	SOCIAL STUDIES
3:35 PM	LOCKER DISMISSAL	LOCKER DISMISSAL	LOCKER DISMISSAL

Mask and Emergency Cards

If COVID-19 numbers continue to rise, students and staff will be required to wear a mask. We will inform everyone if that occurs.

Additionally, the State of Michigan mandates that all children’s immunization form be updated annually. Make certain your child’s immunizations are up-to-date. The students that do not have up-to-date immunizations will be excluded from school.

After School Tutoring

After school tutoring will resume. Tutoring will be held on Mondays, Tuesdays, and Thursdays 4:00-6:00 PM. After 2 late pick ups your child will no longer be able to attend tutoring.

UNIFORM PROCEDURE FOR ELEMENTARY ACADEMY STUDENTS

GIRLS	BOYS
● Plaid (red and black) skirt	● White button up collared shirt
● White button up collared blouse	● Black chinos
● Plaid criss cross tie	● Black school shoes
● Black school shoes	● Red tie
● White, red or black tights, knee high socks	● White or black socks
● Washable mask	● Washable mask

Students are required to wear DEPSA uniform daily. Sweaters may be worn if they are solid red for girls or solid black for boys. Hooded sweatshirts/sweaters are not permitted. **ALL** student and staff will be required to adhere to social distancing guidelines and will be required to wear a mask in the building

Staff Information

Teacher	Grade	Room #	Email	Extension
Ms. Eligado	3	143	Meligado@npfeschools.org	1143
Ms. Rodulfo	3	123	mrodulfo@npfeschools.org	1123
Ms. Szumski	3	142	iszumskic@npfeschools.org	1142
Ms. Bartolome	4	139	jbartolome@npfeschools.org	1139
Ms. Lockard	4	138	Sbridges@npfeschools.org	1138
Ms. Mora	4	127	Amorah@npfeschools.org	1127
Ms. Naidoo	4	128	snaidoo@npfeschools.org	1128
Ms. Angle	5	135	Aangle@npfeschools.org	1135
Ms. Mathis	5	129	Dmathis@npfeschools.org	1129
Ms. Reyes	5	136	kreyesi@npfeschools.org	1136

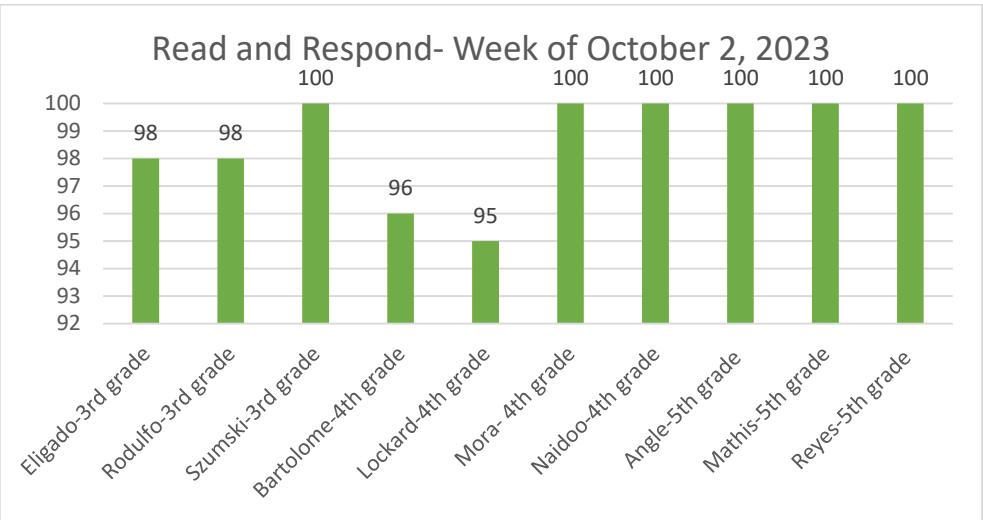


**Late Pick Up:** Late pick up begins 15 minutes after dismissal. All K-5 students are required to remain in the building after dismissal for safety reasons. Late pick up students are held in the cafeteria and parents are charged a \$20.00 late pick up fee.

**Arrival:** Student arrival time every day is 7:50AM and may enter through the playground area (Door 2). Students are marked tardy by 8:05AM.

**Dismissal:** Student dismissal begins at 3:35PM. Students will dismiss out of Door . Parents, please come and pick up your student from their teacher. **No early pickups after 3:00PM every day.** Students will only be released to parents/guardians on file and individuals listed on the emergency contact form. **Please make sure that you complete the emergency contact form with current information.**

**Shout out to the following teachers and students for receiving 95% or higher completion rate of Read and Respond:**  
Eligado, Rodulfo, Szumski, Bartolome, Mora, Lockard, Naidoo, Angle, Mathis, Reyes



**Monthly PBIS Celebration**

PBIS stands for positive behavior intervention support. This is our behavior support system here at DEPSA where students have rules, rewards, and consequences. We celebrate our students for meeting the behavioral expectations. **Students who meet behavior expectations will participate in our PBIS activity Friday, September 29, 2023**

**IT WILL BE A GREAT  
SCHOOL YEAR!**

