

# Community Consolidated School District 62 5Essentials Teacher Satisfaction Data Report

## The 5Essentials Framework

The 5Essentials Framework is based on over 20 years of research from The University of Chicago Consortium on School Research. The Framework outlines the **5Essential factors** that research revealed are necessary for driving sustainable school improvement: Effective Leaders, Collaborative Teachers, Ambitious Instruction, Supportive Environment, and Involved Families.

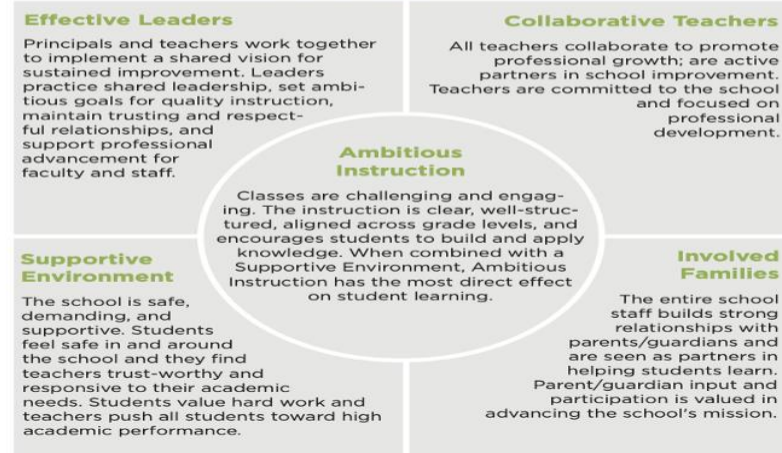
### Research Shows

Schools strong on at least three of the five essentials were **10x more likely** to show substantial gains in student learning over time than schools weak on three or more of the five essentials. A persistent weakness in even **just one of the essential factors** reduced the likelihood of improvement **to less than 10%**.

Further, 5Essentials Measures (see the next page to learn more about the Measures) are positively related to a variety of outcomes, including:



### The Characteristics of a School Considered Strong in the 5Essentials



| Essentials             | Performance Across Years |      |      |      |         |
|------------------------|--------------------------|------|------|------|---------|
|                        | 2020                     | 2021 | 2022 | 2023 |         |
| Supportive Environment | 69                       | 74   | 70   | 57   | Neutral |
| Ambitious Instruction  | 63                       | 57   | 61   | 54   | Neutral |
| Involved Families      | 58                       | 60   | 51   | 54   | Neutral |
| Effective Leaders      | 51                       | 57   | 50   | 50   | Neutral |
| Collaborative Teachers | 52                       | 53   | 49   | 48   | Neutral |

Scoring based on Percent of Respondents scoring a 4 or 5 on a 5-point scale to survey questions:

|             |         |
|-------------|---------|
| Very Strong | 80-100% |
| Strong.     | 60-80%  |
| Neutral.    | 40-60%  |
| Weak.       | 20-40%  |
| Very Weak.  | 0-20%   |

Based on 20 Essential Measures

Based on 15 Supplemental Measures

Based on 3-5 Questions for each Measure

Annual Report reflects each measure for all 5 Essentials.

Each Measure is compared to prior years to show trends.

Each Measure is compared to a state average each year.

Each Measure is rated.

|  |                                  |                |                         |  |                               |            |                           |
|--|----------------------------------|----------------|-------------------------|--|-------------------------------|------------|---------------------------|
|  |                                  |                |                         | Resources are provided to guide improvement efforts for each measure |                               |            |                           |
| The following represents the percentage of students grades 4-12 who responded to the survey:<br>2020<br>2021<br>2022<br>2023 |                                  |                |                         |  |                               |            |                           |
| Summary of Core Measures with a score above 50   |                                  |                |                         | Summary of Core Measures with a score below 50                       |                               |            |                           |
| Ambitious Instruction  | Parent Influence Decision Making | 61 Strong      | Up 5% from prior year   | Involved Families  | Teacher-Parent Trust          | 50 Neutral | Down 2% from prior year   |
| Supportive Environment   | Instructional Leadership         | 59 Neutral     | Up 8% from prior year   | Ambitious Instruction  | Teacher-Teacher Trust         | 49 Neutral | Down 2% from prior year   |
| Ambitious Instruction  | Quality Prof Development         | 58 Neutral     | Up 2% from prior year   | Supportive Environment   | Teacher-Principal Trust       | 47 Neutral | Down 6% from prior year   |
| Supportive Environment   | Collaborative Practices          | 54 Neutral     | Up 3% from prior year   | Effective Leaders  | Teacher Influence             | 44 Neutral | Up 2% from prior year     |
| Involved Families  | Parent Involvement in School     | 53 Neutral     | Up 7% from prior year   | Ambitious Instruction  | Quality of Student Discussion | 40 Neutral | Down 7% from prior year   |
| Effective Leaders  | Program Coherence                | 51 Neutral     | Down 3% from prior year | Collaborative Teachers   | School Commitment             | 40 Neutral | Down 4% from prior year   |
|  |                                  |                |                         | Collaborative Teachers   | Collective Responsibility     | 39 Weak    | Down 4% from prior year   |
| Summary of Supplemental Measures with a score above 50   |                                  |                |                         | Summary of Supplemental Measures with a score below 50               |                               |            |                           |
| Supplemental Measure   | Socialization of New Teachers    | 90 Very Strong | Down 1% from prior year | Supplemental Measure   | Classroom Disruptions         | 48 Neutral | Not available prior year  |
| Supplemental Measure   | Reflection Dialogue              | 50 Neutral     | Up 4% from prior year   | Supplemental Measure   | Innovation                    | 40 Weak    | No change from prior year |
| Supplemental Measure   | Classroom Rigor                  | 60 Strong      | Down 3% from prior year | Supplemental Measure   | Teacher Safety                | 35 Weak    | Down 12% from prior year  |

|                      |  |            |                         |                      |                        |         |                         |
|----------------------|--|------------|-------------------------|----------------------|------------------------|---------|-------------------------|
| Supplemental Measure | Rigorous Study Habits                    | 60 Strong  | Down 5% from prior year | Supplemental Measure | Student Responsibility | 34 Weak | Down 8% from prior year |
| Supplemental Measure | Huan & Social Resources in the Community | 58 Neutral | Down 2% from prior year |                      |                        |         |                         |
| Supplemental Measure | Reflective Dialogue                      | 50 Neutral | Up 4% from prior year   |                      |                        |         |                         |

| <b>Analysis of Teacher Responses: 5Essential Satisfaction Survey</b> |  |
|--|--|
| <b>Top 5 Strengths</b>   | <b>Top 5 Opportunities for Improvement</b> |
|  |  |

