

School Capacity and Utilization Task Force

October 12, 20 23

School Capacity & Utilization Task Force

Meeting #3

October 12, 2023, 5-7 p.m.

Karshner Center – 309 4th St NE Puyallup, WA 98372

Welcome/Introduction

- Welcome - Review / Approve Meeting #2 Minutes
- Teams Page and Resource Documents

Review & Complete Meeting #2 Presentation

- Survey Results
- P4 and Puyallup Digital Learning (PDL)
- High School Career and Technical Education (CTE) Magnet Programs
- Running Start
- Shift in Program Delivery over the past decade – Elementary case study

Region 1 Introduction

- Schools in Region 1
- Sunrise Master Plan
- Puyallup SD / Orting SD boundary on South Hill

Break (5 min.)

Region 1 School Capacity & Enrollment

- 2023-24 enrollment baseline
- Components of enrollment and capacity numbers
- Review of Region 1 preliminary enrollment/capacity (current, 4-year, 8-year)
- Table work and discussion – report out



Next Meeting

Meeting #4


October 26, 2023, 5-7 PM

Karshner Center – 309 4th St NE, Puyallup, WA 98372

Closing / Survey


- Final thoughts & questions
- Preview Meeting #4 and complete survey

Meeting Norms



Preserve this as a safe space for open, honest discussion.


Give grace and space



If you present a problem, then you should also present a solution.



Keep an infectious sense of possibility of what we can accomplish



Engage fully with honesty and integrity



Respect the rights, differences, and dignity of others

Come with an open mind.



CHARTER

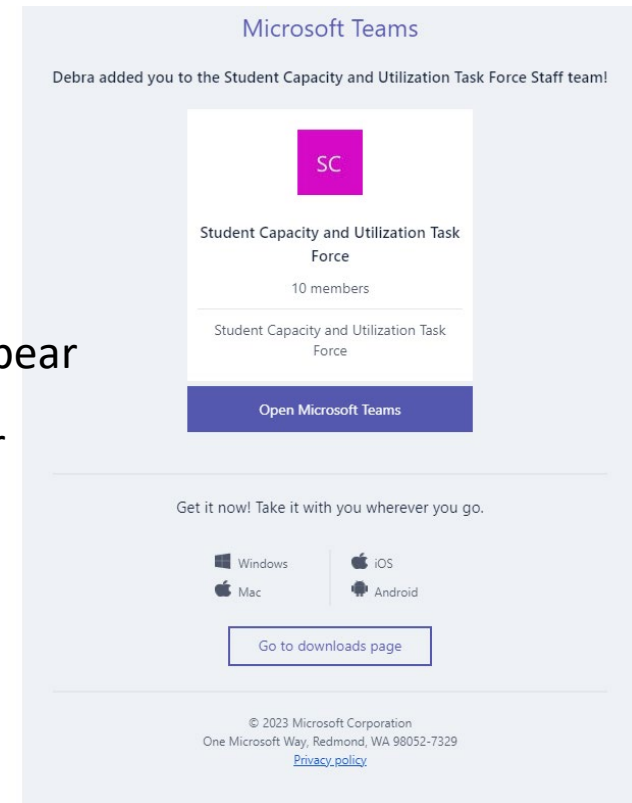
The **School Capacity and Utilization Task Force** is commissioned by the Board of Directors for the purpose of developing and evaluating recommendations to support the interim housing of students in the PreK-12th grade settings of the Puyallup School District until a future capital levy and/or bond program is funded and constructed.

Meeting Roadmap



TEAMS Page Access

1. Download the Teams App
2. Click on emailed link from Microsoft Teams
3. Enter Microsoft username and password
4. The School Capacity and Utilization Task Force Channel will appear
5. Click on "File" top of screen and all meeting folders will appear




REVIEW / APPROVE MEETING # 2 MINUTES

- Meeting Minutes are emailed with upcoming meeting agenda
- Minutes are available on the MS TEAMS School Capacity and Utilization Task Force page.

Meeting # 3 – Learning Targets

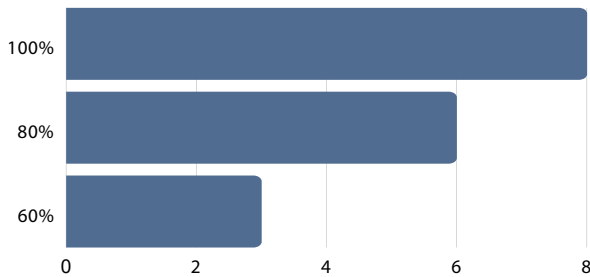
- Understand how building capacity may change without any changes to the physical space.
- Be able to identify schools in Region 1.
- Identify which schools in Region 1 will be challenged to serve projected growth in enrollment.
- Be familiar with outside factor(s) that may have an impact on PSD enrollment near Region 1?

A photograph of students in a classroom, overlaid with a dark blue semi-transparent filter. The students are focused on their work, with some writing on papers. The background shows a whiteboard with some faint writing. The overall mood is one of concentration and learning.

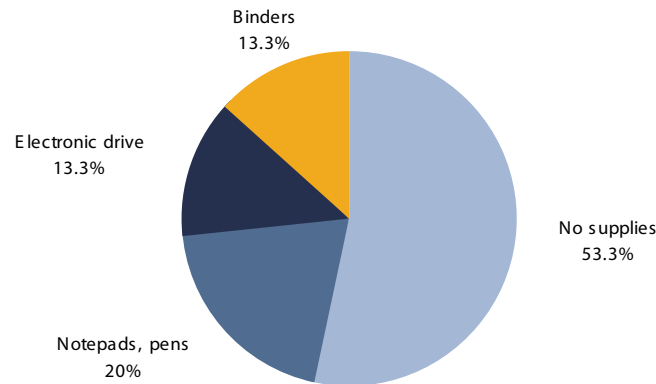
Review & Complete Meeting #2 Presentation

Meeting 2 Survey Results

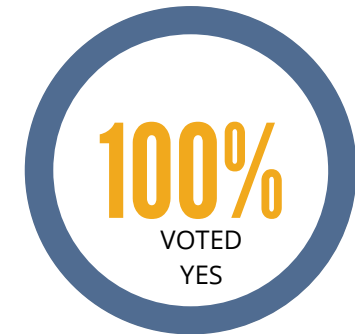
1. Do you believe tonight's meeting has enhanced your level of understanding?



2. Are there any extra resources we could offer to improve your learning experience?



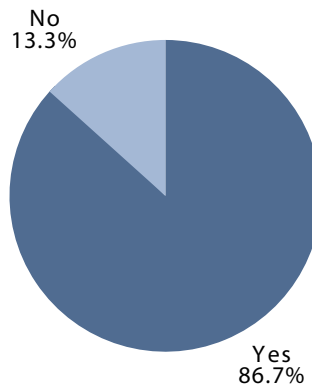
3. Is the Puyallup School District predicting an increase or a decrease in enrollment in the next ten years?



4. Can programs have an impact on the capacity of a school?

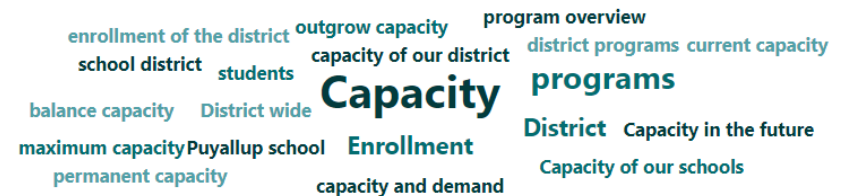


5. Have you visited the SCUT website at <http://www.puyallupsd.org/scut/>?



6. If a neighbor inquired about the information presented tonight, how would you succinctly summarize what we've learned?

7 respondents (50%) answered **Capacity** for this question.





Puyallup Digital Learning CTE High School Magnet Programs Running Start Program

Presenting: Julie Hunter

Executive Director of Secondary Education

Puyallup Digital Learning (PDL)

PDL is a **fully accredited online school** in partnership with the Puyallup School District. PDL provides a way for students to

- **take classes over the Internet**
- **learning at their own pace**
- **on their own schedule**
- **primarily, in their own environment**

Since it is part of the Puyallup School District, Puyallup Digital Learning is **tuition-free** for all students. Students may start at any time.

Puyallup Digital Learning (PDL)

Puyallup Parent Partnership Program (P4)

Program offering a certificated teacher to support families who guide their student's learning at home through various learning models for K-6th grade students.

Puyallup Online Academy (POA)

Provides opportunity for 7th – 12th grade students to take their courses online.

Puyallup Open Doors (POD)

Provides an alternative path for high school students to obtain their high school diploma or General Education Diploma (GED).

CTE High School Magnet Programs

Career and Technical Education (CTE) prepares students for access to meaningful post-secondary opportunities in a highly competitive, global economy. The program is responsible for supporting student college and career readiness through real-world, real-life skills requiring both academics and training. Many CTE courses are taught at each comprehensive high school. However, the following magnet programs are school specific.

Emerald Ridge HS

- Aviation
- Mechatronics Apprenticeship
- Drones
- Urban Farming
- Microsoft Technology Associate

Puyallup HS

- Automotive Program
- Culinary
- Athletic Trainer
- Urban Farming
- STEM Apprenticeship

Rogers HS

- ACE Academy
- JROTC
- Welding
- Plant Sciences / Viticulture

Running Start Program

In Washington State, students are eligible to attend classes at any community college provided they can arrange transportation to the college, attain the minimum qualifying score on the college's test, and complete the college's orientation process.

High school juniors and seniors are eligible for the Running Start Program on a part-time or full-time schedule.

Shift in Program Delivery - Elementary Case Study



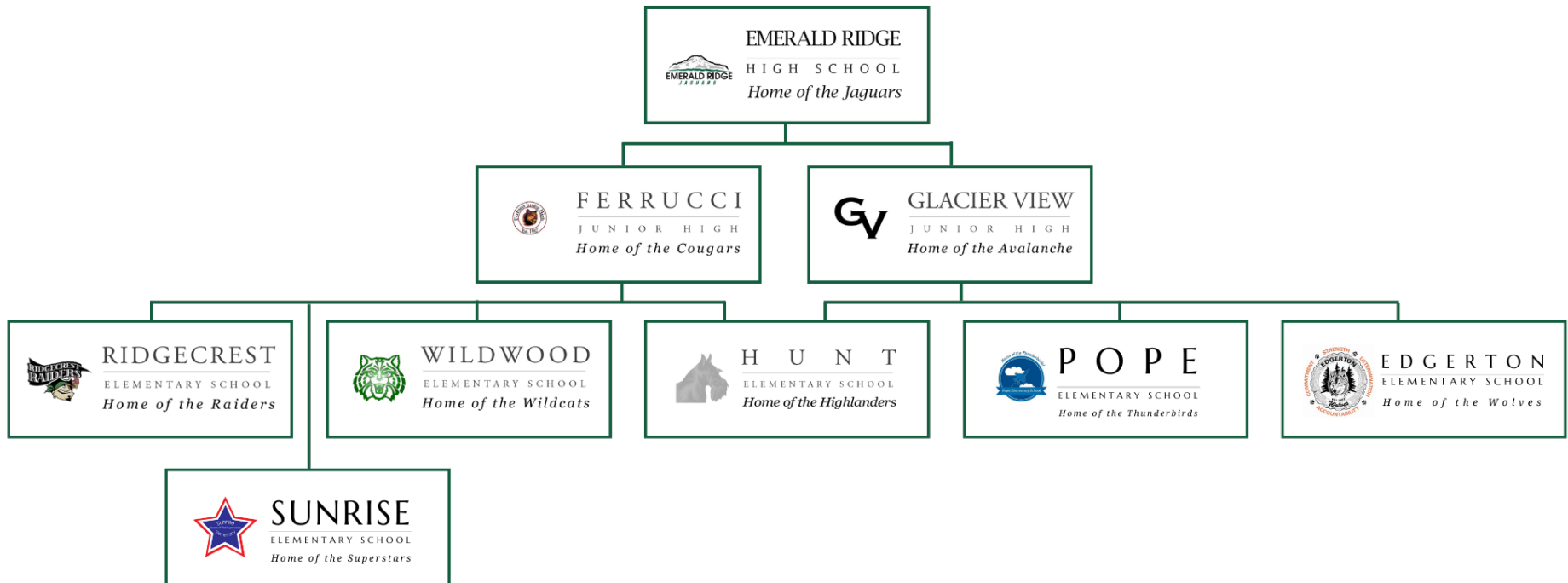
Brouillet Elementary
(Capacity without portables)

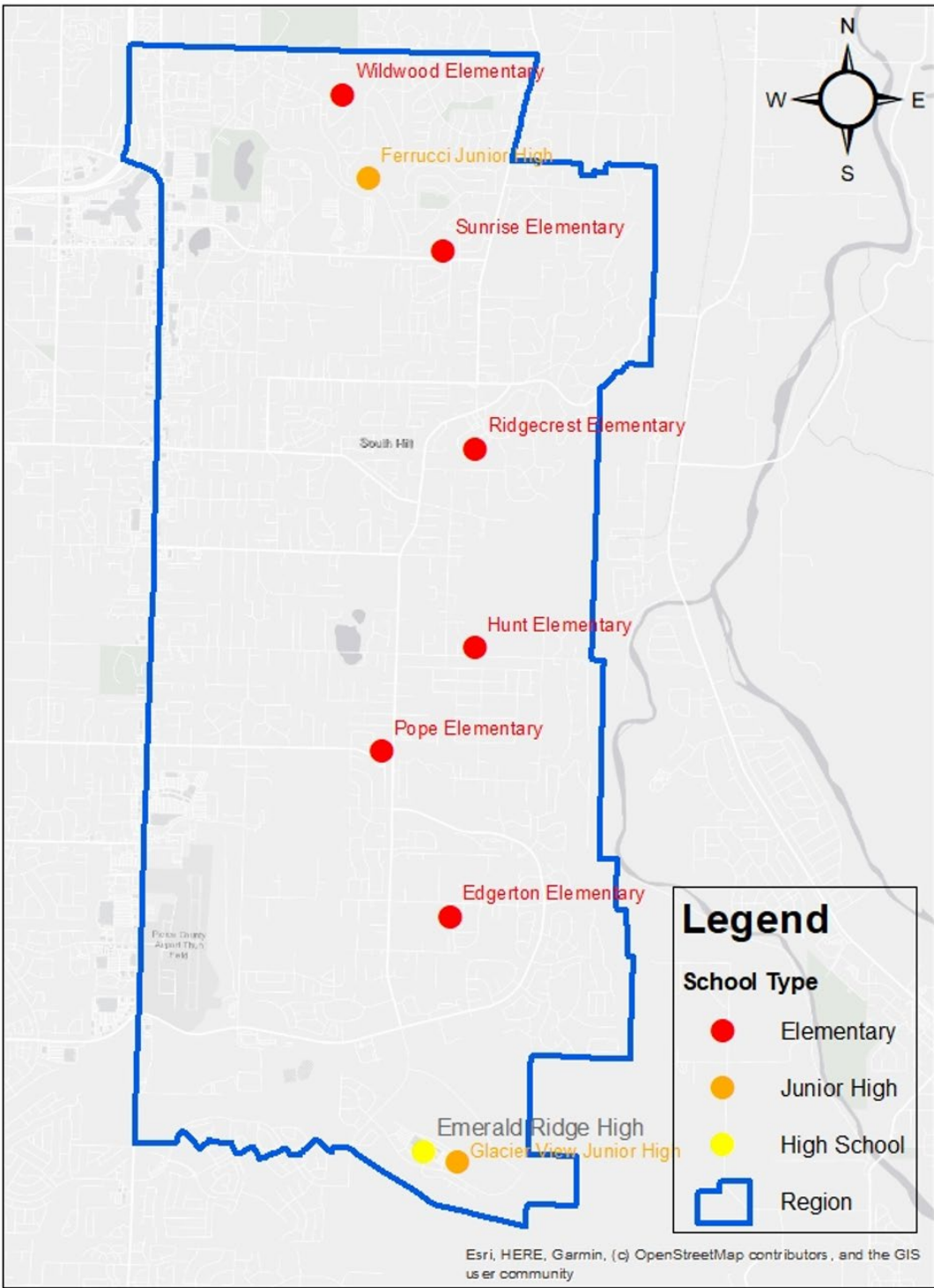
- 1990-91: Building Opened. Education Specification “Ed Spec” - **550 student capacity.**
- 2016-17: All Day Kindergarten - **500 student capacity.**
- 2018-19: K-3rd grade class size reduction - **450 student capacity.**
- 2023-24: QUEST classroom addition.

A photograph of students in a classroom, overlaid with a dark blue semi-transparent filter. The students are focused on their work, with one student in the foreground writing on a piece of paper. In the background, a sign is partially visible with the words "Work Day" written on it. The overall scene depicts a busy, collaborative learning environment.

Region 1 Introduction

Region 1 Schools

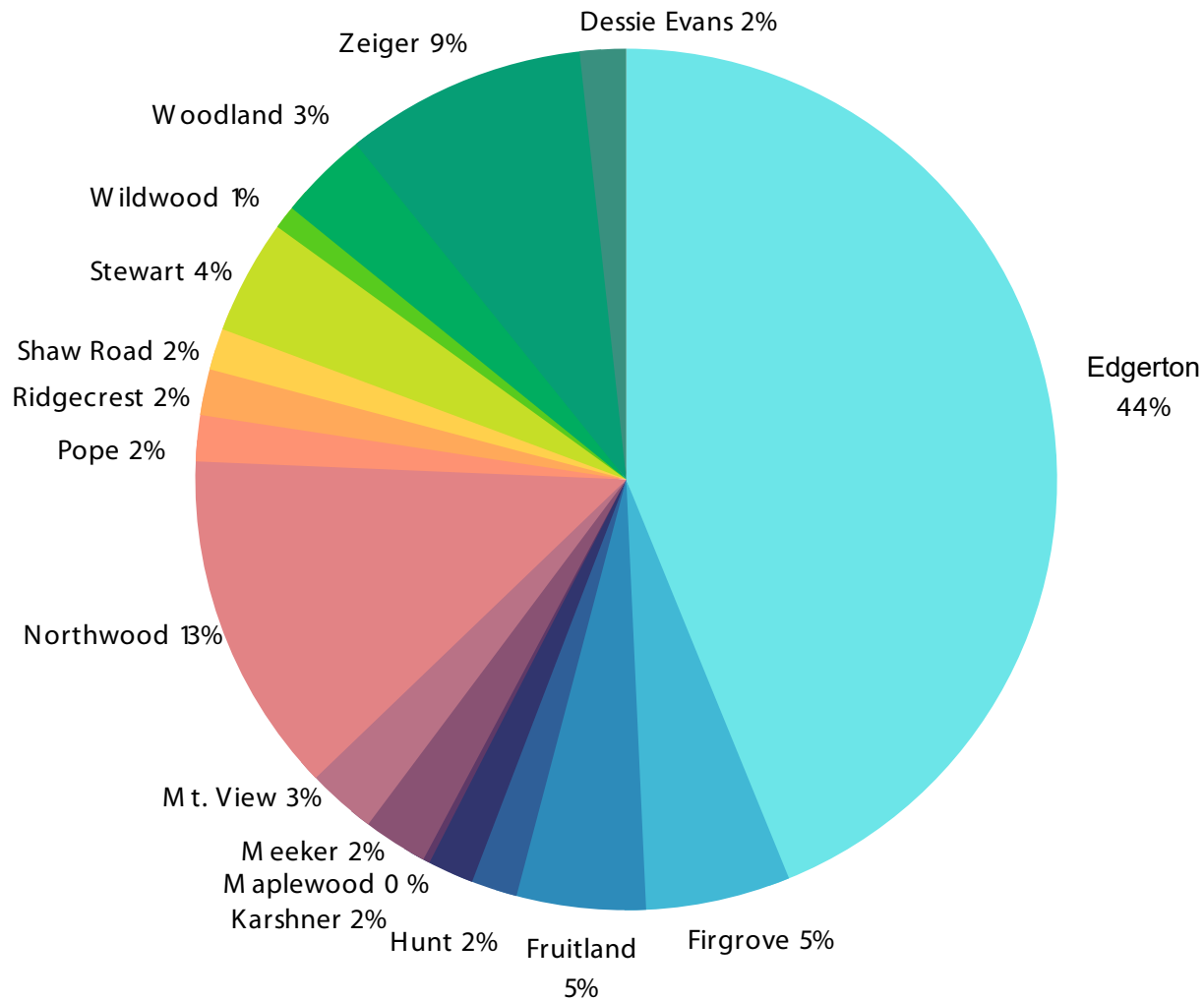




Region 1

2022-2027 (5 YR) Singler-Family Detached Only – Planned Housing Units by Elementary Attendance

Data compiled Nov. 2022



Projects We Are Tracking

1. The Peak Apartments & Townhomes
- ~~2. Ashburn Woods~~
- ~~3. Emerald Hollow~~
4. Sunrise Park Apartments
5. Area 27 Apartments
6. The Madronas at Sunrise
- ~~7. The Crossings at Sunrise~~
8. The Pines at Sunrise
9. Area 26 Apartments
10. Liberty Ridge



Sunrise Triangle

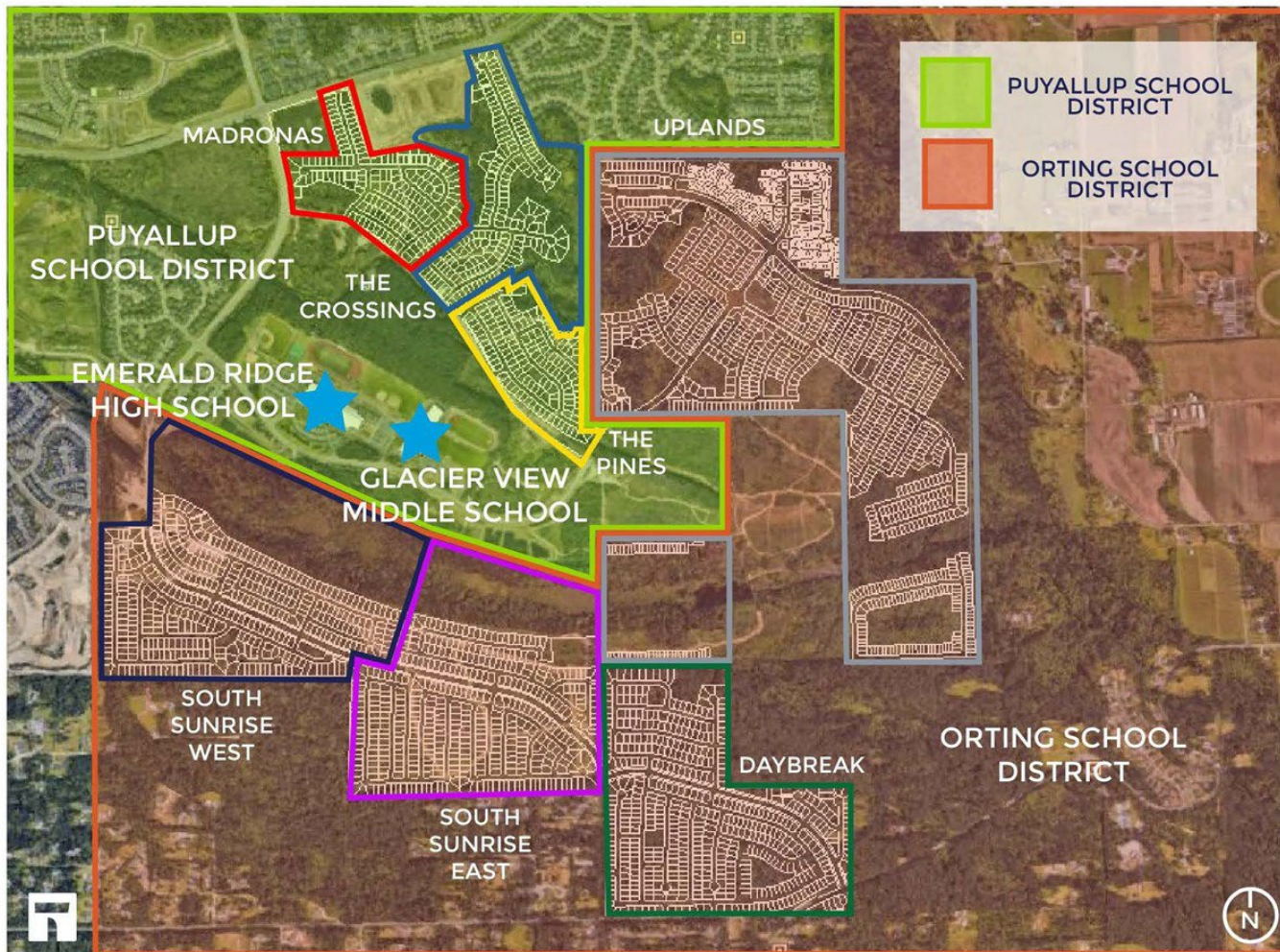


Puyallup SD

Bethel SD

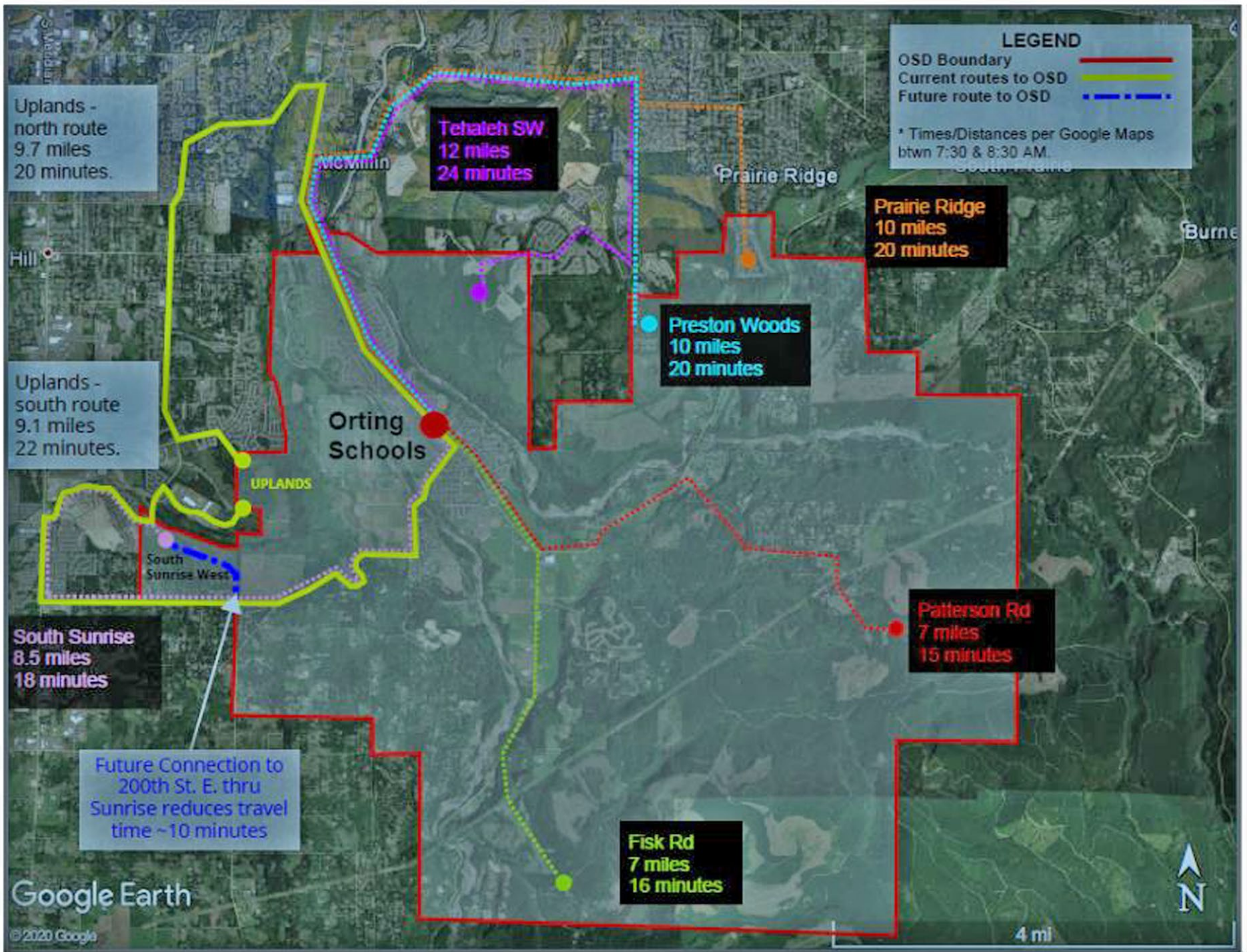
Orting SD

Orting / Puyallup SD boundary





**PORTING SCHOOL LEADERS PREPARE
AS CITY SEES POPULATION GROWTH**



News Clippings

A friendly border dispute

Money is only obstacle to swap between Puyallup and Orting school districts

BY BILLIE JO BOUIC
Pierce County Herald

Homeowners in the Eagle Ridge section of the Sunrise development on South Hill don't want to be in the Orting School District. Orting School District officials don't blame them. Puyallup School District is willing to annex the property. There's only one hangup—and it has a dollar sign in front of it.

"We're very property poor," said Orting Superintendent Lee Thoren. In fact, in recent years Orting has consistently had the county's lowest ratio of property tax revenue to number of students. Thoren estimates Eagle Ridge represents about \$8 million in taxable property. He also estimates that more than 600 homes with a total value of \$90 million-\$100 million will be built on several adjoining sections of Sunrise that also are within the Orting School District's boundaries.

"We can expect similar petitions in the future," Thoren said of the prospects if Orting releases Eagle Ridge without dealing with the rest of the property at the same time.

When school district lines were drawn many years ago, no one anticipated the volume of growth taking place in the Puyallup Valley today. Yet Thoren believes it wasn't just a lack of foresight that brought about the secession effort. He speculates that those who drew up the district borders never even visited the area.

see SWAP on page A5

Growth has forced school districts to reconsider obsolete boundaries.



Land swap proposal

will be affected by the possible swap

has been very cooperative, very a problem

Orting Superintendent Lee Thoren

land, but we also understand the



LAND SWAP

■ Economics, common sense and neighborliness help eliminate prospect of 25-mile ride to school

BY TERESA DAVIDSON
Pierce County Herald

SOUTH HILL—Six-year-old Stephen Hauer could've had to travel 25 miles on the school bus each day. But thanks to a land swap between the Puyallup and Orting school districts, he'll be able to attend an elementary school just blocks from his home this fall.

The Puyallup first-grader and some 50 other students will go to schools close to home because of the agreement by which Orting School District gave up its claim to property in Eagle Ridge, a new neighborhood in the huge Sunrise Development where Hauer and the other students live.

In return, Orting will receive the tax benefit from a parcel of undeveloped commercial land on 122nd Avenue East.

Stephen's mother, Tammy, is among those who are delighted with the deal.

"He'll go to a neighborhood school now," she said of her son.

"He'll be joining all the other neighborhood kids."

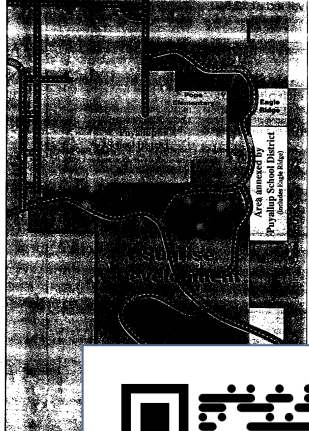
The deal also leaves Tammy Hauer with a sense of satisfaction and accomplishment.

That's because she was the driving force behind it.

Hauer organized her neighbors to secede from the Orting School District two years ago after moving

into the newly-developed area and learning to ride the school bus one-way to Orting.

Although Eagle Ridge is only a couple of miles from the Orting road that connects Eagle Ridge to the



Area annexed by Puyallup School District

Schools

originated from At

Because of the travel, some 35 families who live in a 75-home neighborhood of Sunrise development questioned Orting schools to alter the boundary lines so their property would be in the Puyallup School District.

Orting Superintendent Lee Thoren responded by suggesting that the parents appeal to the Puget Sound Educational Service District, which oversees the area's school districts.

This had to be a situation where it was the residents who were requesting a boundary change," explained Hauer. "It wouldn't be the school districts."

Last fall, the educational service district committee suggested residents, the sunrise developer and the school districts hammer out a solution rather than relying on a committee to come up with one.

So, the two districts negotiated swap that the state education board approved in late July.

All our neighbors are just thrilled," said Hauer. "I will attend Port School this year."

Orting school officials they initially had the proposed land swap. They were we school district willions in projecting from the Eagle Ridge ment, Thoren explained. The potential is the undeveloped d that could become more than makes revenue, he added. The length of would have been bring the students from Eagle Ridge to an Orting school and back again was a major factor in the school district's decision to give up the Eagle Ridge residences.

"Now it's extremely convenient for the newcomers to the development to attend school," said Tony Apostis, assistant to Puyallup School District Superintendent Herb Berg. "It's great." Hauer said of the land swap and its impact on her

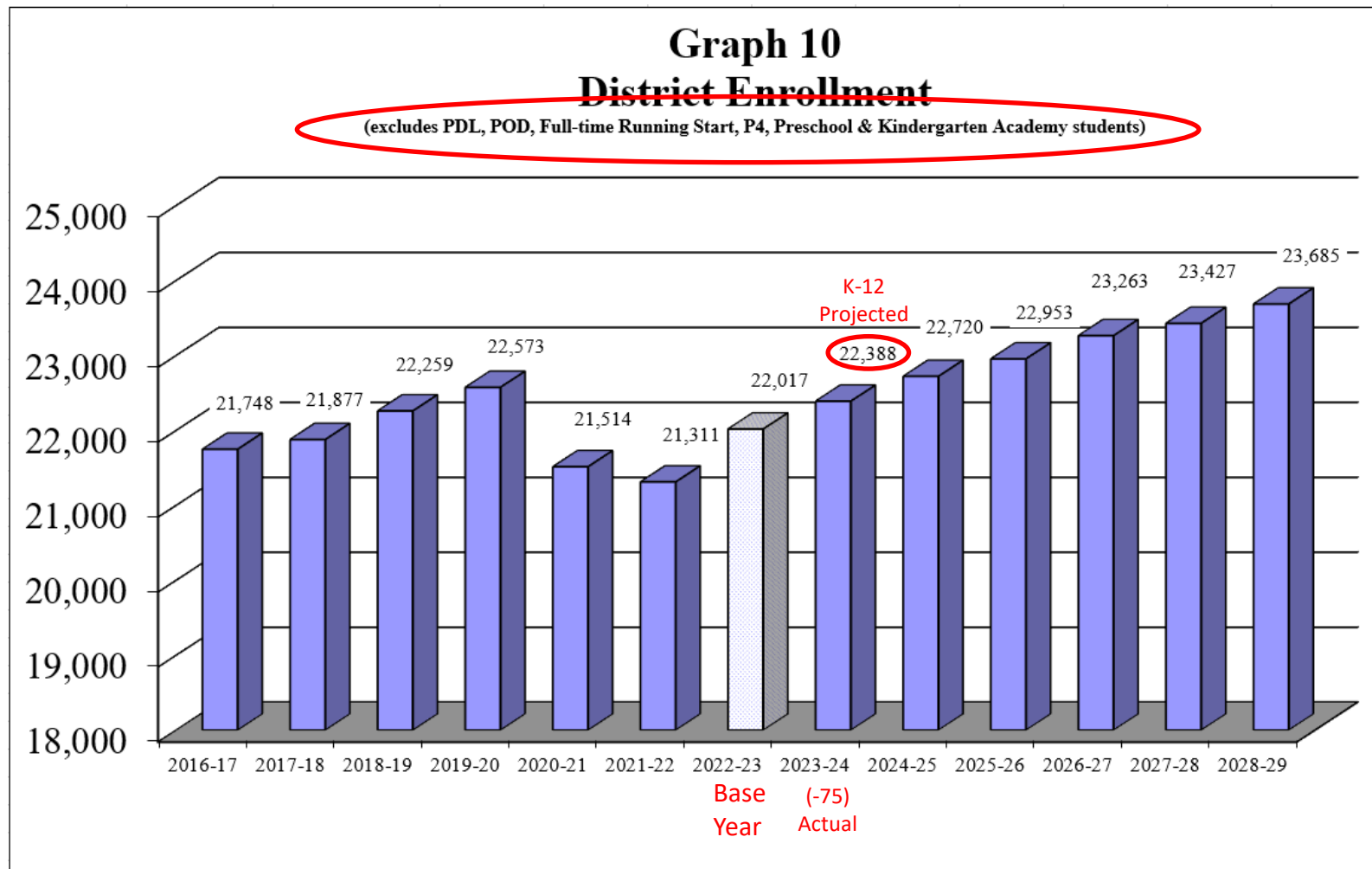


Construction of a junior high is scheduled for 1996, and the district hopes to begin construction of a new high school the year after that.

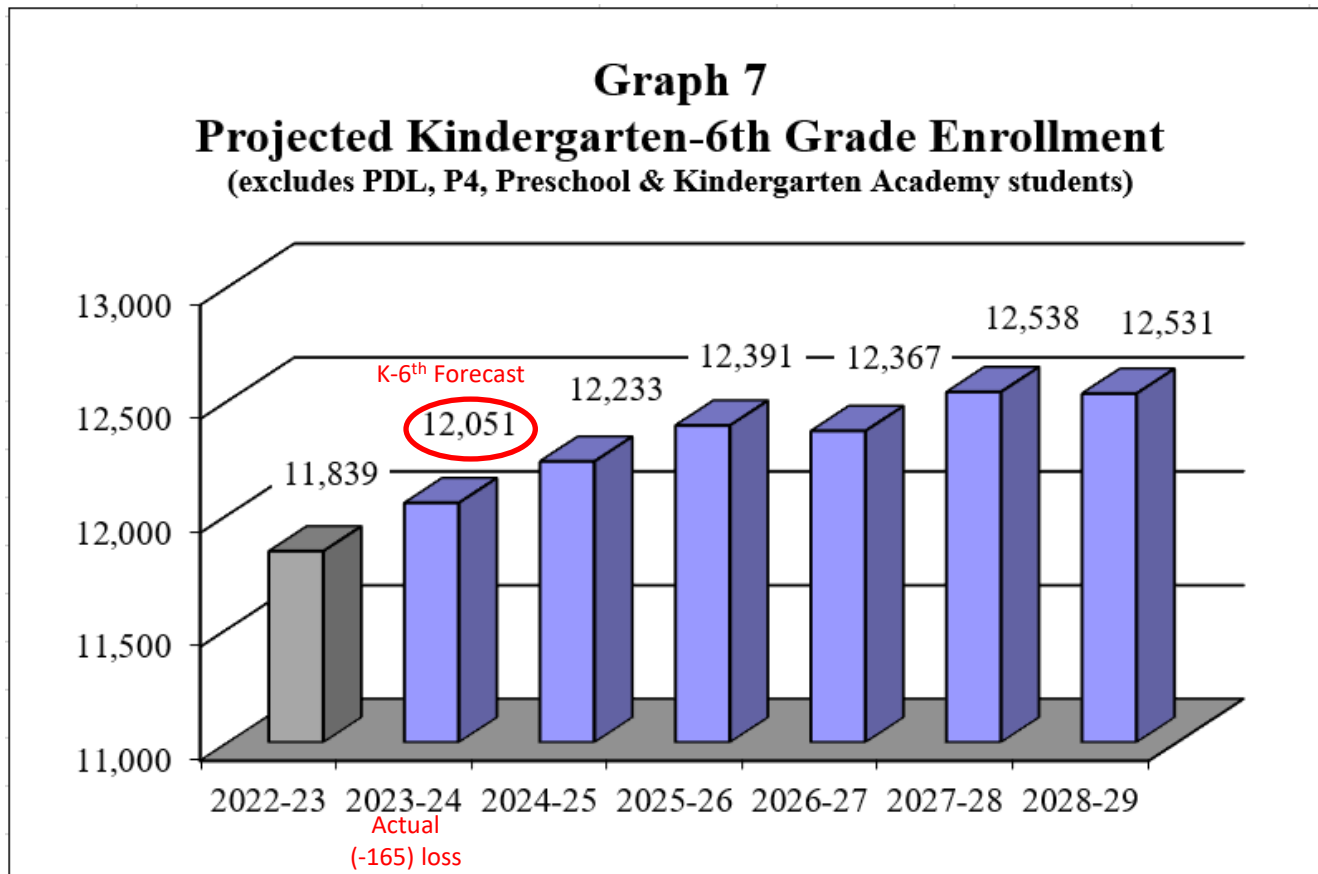
Break

5 minutes

District Enrollment



K – 6th Grade Enrollment Forecast from 2022-23



Region 1 Enrollment & Capacity

SCUT Elementary 2023-24 Existing	EDGERTON	HUNT	POPE	RIDGECREST	SUNRISE	WILDWOOD	REGION 1 TOTAL
Student Capacity (excluding Portables)	592	668	690	426	648	328	3,352
10/1/2023 Enrollment**	723	702	716	466	671	342	3,620
Capacity +/-	(131)	(34)	(26)	(40)	(23)	(14)	(268)
Student Capacity (with portables)	812	844	756	602	736	504	4,254
Capacity +/-	89	142	40	136	65	162	634

Student capacity is based upon 22 students/classroom at 100% utilization rate. Northwood and Mt View use 21 students/classroom (K-5)

Preschool rooms and enrollment are not included in the capacity analysis.

*K-5th grade counts.

**Enrollment from Facilities Extract Cognos report pulled from eSchoolsPLUS on 10/1/2023. Does not include Preschool, Kindergarten Academy, P4 or PDL students.

last updated: 10/12/23

Table Activity

Region 1 schools	Is current capacity an issue	Is future capacity above or below?	Other factors not presented
Emerald Ridge High			
Glacier View Jr. High			
Ferrucci Junior High			
Edgerton Elementary			
Pope Elementary			
Hunt Elementary			
Ridgecrest Elementary			
Sunrise Elementary			

Closing

Homework:

- Help us educate our community about Capital Projects and the work you're doing.
- Watch Puyallup Schools Monday October 16th Board Meeting at 6pm
Follow and share: **PSD Foundations for Our Future** on Facebook, Instagram, Twitter, and LinkedIn.
- Access the provided link to Puyallup SD **School Capacity & Utilization Task Force Teams Channel**

Next Meeting

Meeting #4
October 26, 2023, 5 - 7 PM
Karshner Center – 309 4th St NE, Puyallup, WA 98372

LinkedIn



Facebook



Questions?

Brian Devereux

Facilities Planning Director
DevereBJ@puyallup.k12.wa.us
(253) 841-8772

Brady Martin

Director of Capital Projects
martibl@puyallup.k12.wa.us

October 12, School Capacity and
Utilization Task Force Meeting
Feedback

