

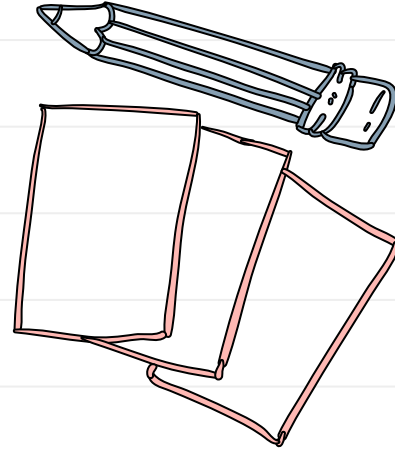


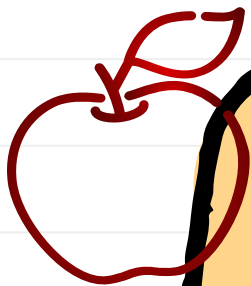
TITLE I PROGRAMMING 2023-2024

Lincoln Park Public Schools
October 19, 2023

AGENDA

- All About Title I
- Lincoln Park's Title I Program
- Selection Criteria
- Parent Involvement Policy
- School-Parent Compact
- Know Your Rights





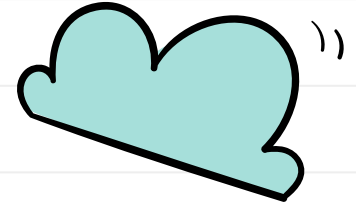
PROGRAM CONTACTS

Ann Marie VanSickle	- Program Coordinator	vansickle@lincpk.com
Thania DePalmo	- MTSS Coordinator	depalmo@lincpk.com
Melissa Bammer	- LPES Principal	bammer@lincpk.com
David Winston	- LPMS Principal	winston@lincpk.com

**REACH OUT ANYTIME
WITH QUESTIONS**



ALL ABOUT TITLE I

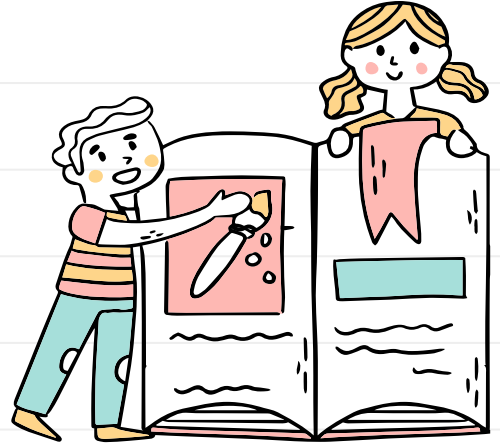


- Title I is the major component of the Elementary and Secondary Education Act (ESEA) and the largest federal assistance program for our nation's schools.
- Lincoln Park provides a Targeted Assistance Program under Title I
- Title I funding flows from the U.S. Department of Education (as appropriated by Congress) to the New Jersey Department of Education (NJDOE) & then to Lincoln Park.



TARGETED ASSISTANCE PROGRAM

- In targeted assistance programs, Title I, Part A funds are used to provide services to eligible students identified as having the greatest need for special assistance.
- Eligible students are students who are failing, or most at risk of failing, to meet the State's challenging student academic standards on the basis of multiple, educationally related, objective criteria.



MAJOR PROGRAM ELEMENTS

Lincoln Park uses a Multi-Tiered System of Support Model that focuses on Response to Intervention (RTI). Some of the major components include:

TIER 1 WHOLE CLASS

- Students working on or near grade level
- Regular classroom instruction

TIER 2 SMALL GROUP

- Students who score in the "strategic" zone
- Support from their ELA/ Math teacher in the regular classroom

TIER 3 ADDITIONAL

- Students who score in the "intensive" zone
- Receive additional instruction from an intervention teacher.

MAJOR PROGRAM ELEMENTS

Lincoln Park uses a Multi-Tiered System of Support Model that focuses on Response to Intervention (RTI). Some of the major components include:

BENCHMARK ASSESSMENTS

- NJSLA & Start Strong Results
- i-Ready (ELA & Math)
- Dynamic Indicators of Basic Early Literacy Skills

INTERVENTION SERVICES

Students receive additional instructional support from an Intervention teacher in small groups that meet either in-class or in a pull-out setting.

MONITOR PROGRESS

RTI teams will continue to evaluate student progress in the program and meet with teachers to share and collect relevant student data.

PROCESS

01

Students identified as
in need of support



02

Parental notification &
permission



03

Students receive additional
support between 1 & 3 days per
week



04

Continuous progress
monitoring

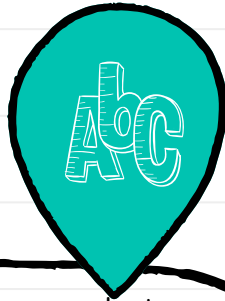


05

Student Success!

Goal: To move
back to Tier 1
& 2 support
levels

ENTRANCE + EXIT CRITERIA

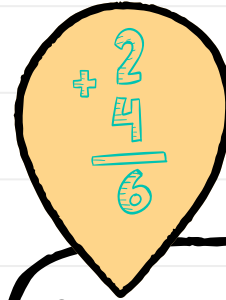


ENTRY

Students are screened at three points during the year. (Fall, Winter, Spring).

The team reviews report cards, state test results, local benchmarks and teacher recommendation.

Students who fall below grade level benchmarks are placed into services. Intervention occurs during each grade level Intervention Period.

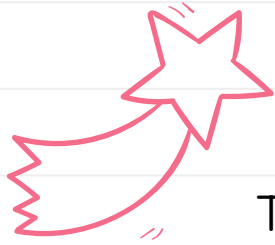


EXIT

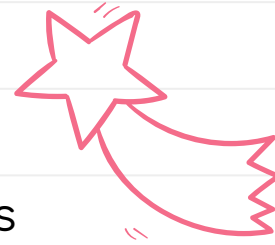
Students are reassessed at each screening period. Students are exited from the program if they are meeting grade level benchmarks.

This determination is made by the RTI team.

Parents will be notified when students meet exit criteria.



SCHOOL-PARENT COMPACT

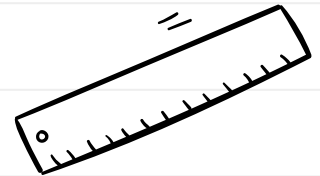
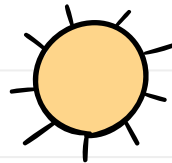


The School-Parent Compact outlines the responsibilities that parents, students and the school agree to when providing Title I services.

It is sent home with the original parent notification packet and can be found on our district website on the [Title I-Basic Skills page](https://www.lincolnparkboe.org/special-services/title-i-basic-skills)



<https://www.lincolnparkboe.org/special-services/title-i-basic-skills>





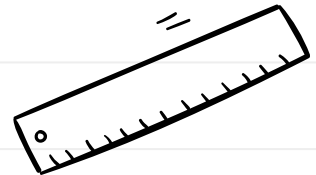
PARENTS RIGHT TO KNOW

The law requires that all schools receiving federal funds must inform parents of their right to ask schools about the qualifications of their children's teachers.

The Lincoln Park School District is proud to report that all members of the teaching staff are highly qualified and meet the requirements set forth by the New Jersey Department of Education.

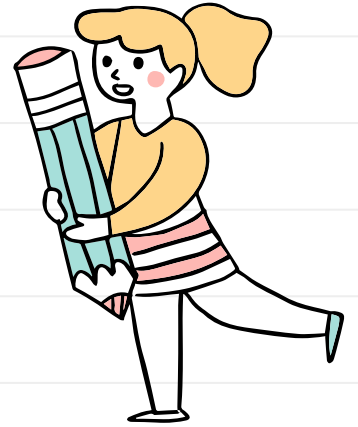
The Right to Know letter was also sent home with the original parent notification packet and can be found on our district website on the [Title I-Basic Skills page](#)

<https://www.lincolnparkboe.org/special-services/title-i-basic-skills>



PARENT SUPPORT IS VITAL TO SUCCESS

- Stay in touch with your child's teachers
- Log into the [Genesis Parent Portal](#) at least once per week to check on your student's progress in class.
- Talk with your child about his/her school day and activities
- Ensure regular school attendance
- Attend Back to School Night and Parent/Teacher Conferences
- Read to/with your child
- Reinforce the importance of learning and school
- Read the [School-Parent Compact](#)
- Know your [rights](#)
- Know your school's [curriculum](#)
 - <https://sites.google.com/lincpk.com/curriculum>



RESOURCES

U.S. Department of Education, Improving Basic Programs Operated by Local Educational Agencies
(Title I, Part A)

<https://www2.ed.gov/programs/titleiparta/index.html>

New Jersey Department of Education, Title I Programs

<https://www.state.nj.us/education/title1/program/parent/>

District Website

<https://www.lincolnparkboe.org/>

Genesis Parent Portal

<https://parents.genesisedu.com/lincolnpark/parents?gohome=true>

THANK YOU FOR ATTENDING!

