



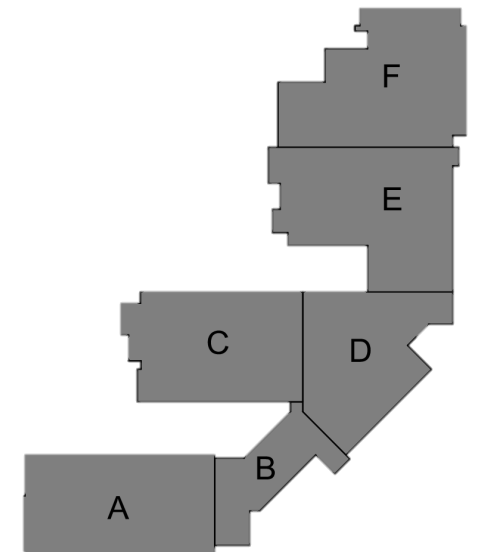
Mary E. Britton Middle School

➤ Completed Work:

- Pour ICF Top out at Kitchen Area
- Pour ICF at Cafeteria
- Continue Steel at Area B and Area D
- Platform Area C ready for Hollow Core (10/16/23)
- Continue Excavation for Site Sanitary
- Continue Air Barrier efforts at F and C Areas
- Pour Topping Slab Area F and Area C (11/12/23)
- Continue MEP Rough Ins at many areas
- Continue Site Sanitary (Rock Excavation)
- Start Installing Zone Piping for Geothermal Loops
- KAW finishing up bidding to start work soon (Next Week Set to Mobilize)

➤ Upcoming Work/Look Ahead:

- Continue ICF at Cafeteria
- Start ICF at B & D Areas
- Start Decking at Gym Area
- Complete Roof Joist at Kitchen & Mechanical Space
- Complete CMU to Platform Area A (Schedule Hollow Core)
- Continue MEP Rough In overhead and wall multiple Areas
- Start Spray Foam Application at Gym Area
- All geothermal wells complete and continue Zone Piping (could be loud)
- Continue Site Sanitary
- Steel Erection in Multiple Areas



Mary E. Britton Middle School

Area A – ICF Concrete Pour



Week Ending October 13, 2023

Mary E. Britton Middle School



Area B – Metal Stud Framing in Admin Has Begun



Week Ending October 13, 2023

Mary E. Britton Middle School



Area C – CMU Continues on 2nd Floor



Week Ending October 13, 2023

Mary E. Britton Middle School



Area C – Setting of 2nd Floor Steel above Flex Classroom Sliding Door

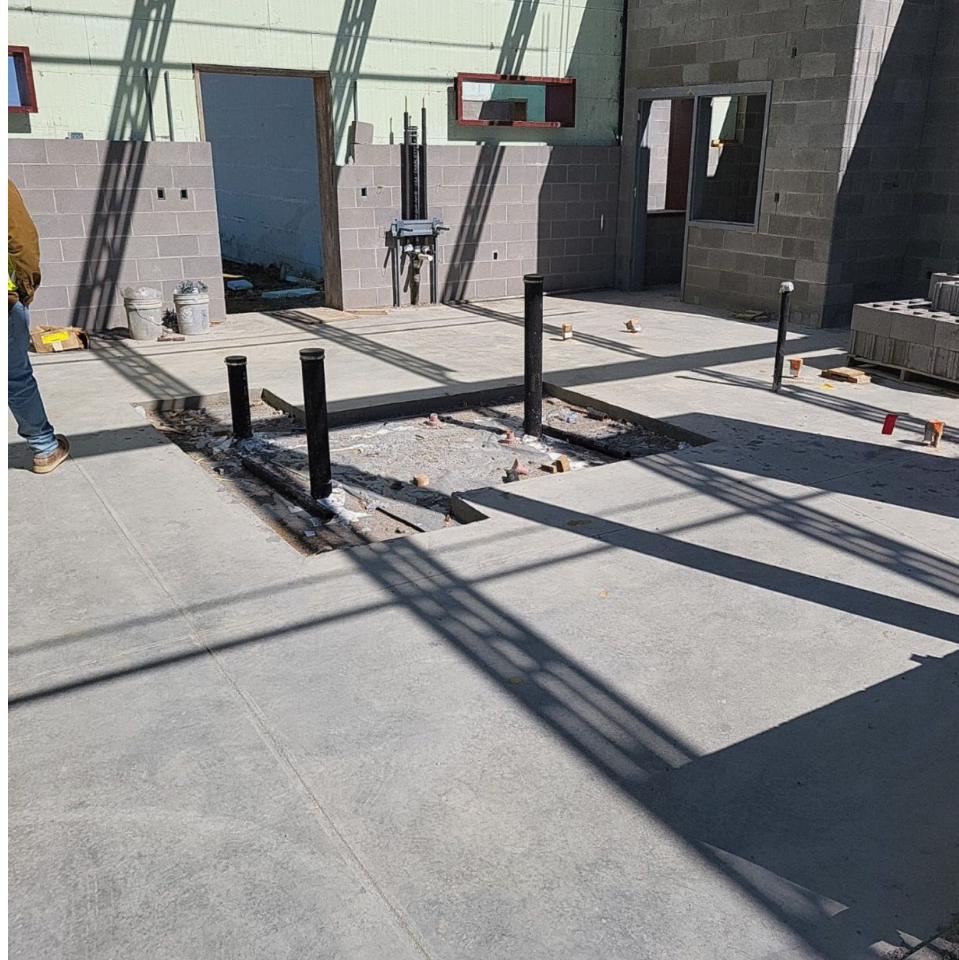


Week Ending October 13, 2023

Mary E. Britton Middle School



Area E – Concrete Slab Poured in Kitchen



Week Ending October 13, 2023

Mary E. Britton Middle School

Area E – Upper Stala Frame Windows Installed at Cafeteria



Week Ending October 13, 2023

Mary E. Britton Middle School



Area F – CMU Continues up to Roof Height at Gym



Week Ending October 13, 2023

Mary E. Britton Middle School



Area F – ICF Concrete Pour to Bearing Height



Week Ending October 13, 2023