

Lexington-Richland School District Five

Growth Forecasting and Redistricting Study

Preliminary Redistricting Scenarios



Guiding Criteria Recap

Primary Criteria

- Address overcrowding in the Chapin Cluster and provide ample capacity to support long-term enrollment growth in this area
- Develop an attendance zone for Piney Woods Elementary
- Balance enrollments across all school buildings to ensure efficient and equitable use

These criteria represent the primary purpose of the redistricting process. These criteria should be met for all redistricting options.

Guiding Criteria Recap

Secondary Criteria

- Maintain geographic proximity and align with neighborhood boundaries
- Maintain existing cluster model and feeder pattern
- Minimize disruption to students and families

These criteria represent the secondary considerations for the redistricting process.

Redistricting options should strive to align with these criteria to the greatest extent possible and will help the Board of Trustees to select a preferred option for adoption.

Scenario 1: Objectives

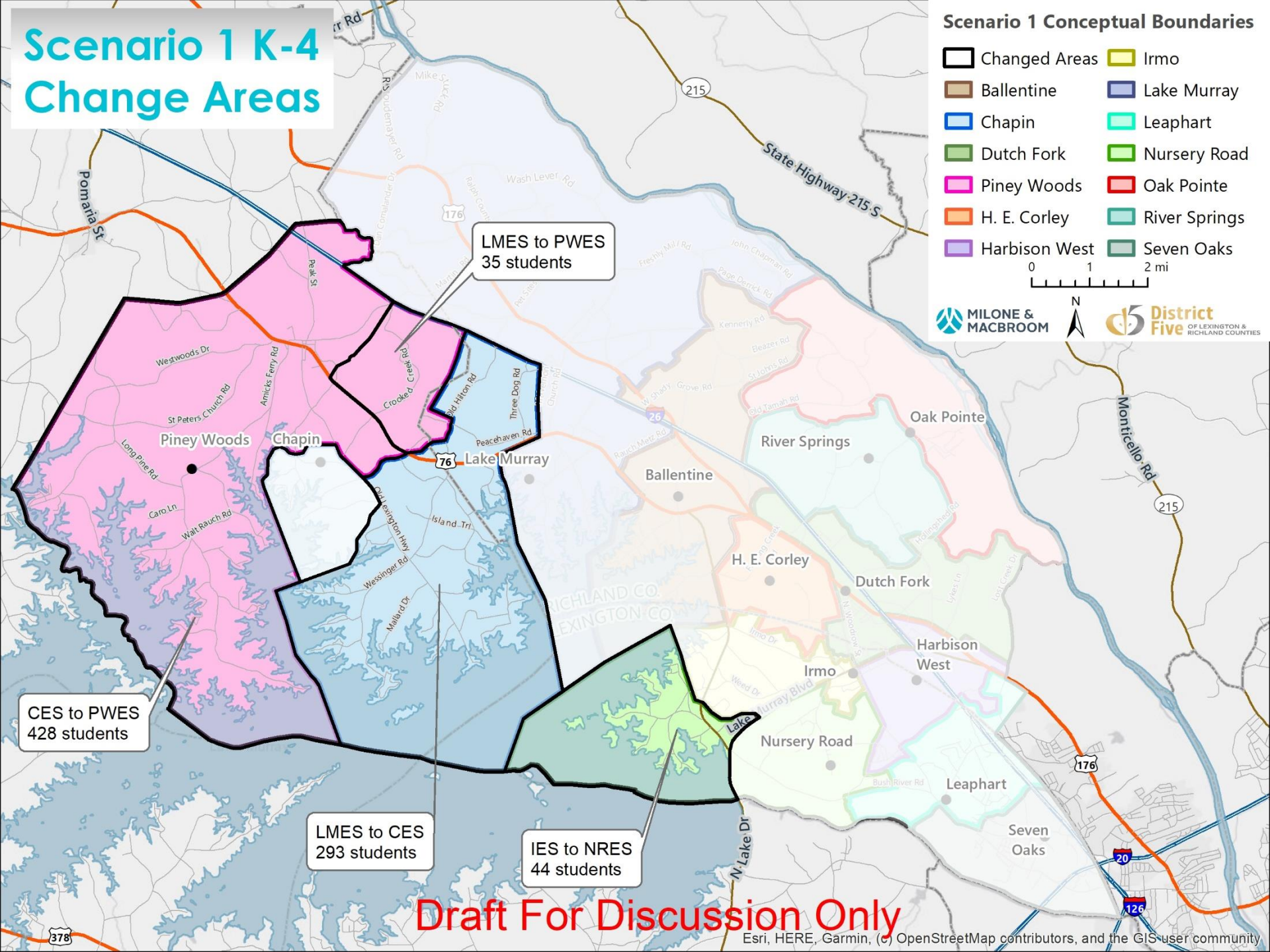
- Create attendance zone for Piney Woods Elementary School
- Alleviate projected overcrowding in the Chapin Cluster and at Irmo ES
- Eliminate split feeder in Ballentine attendance zone
 - Entire attendance zone moves to the Dutch Fork cluster
- Maintain Cluster/Feeder Pattern boundaries in all other locations
- **Minimize disruption of students**

Scenario 1 K-4 Change Areas

Scenario 1 Conceptual Boundaries

- | | |
|---------------|---------------|
| Changed Areas | Irmo |
| Ballentine | Lake Murray |
| Chapin | Leaphart |
| Dutch Fork | Nursery Road |
| Piney Woods | Oak Pointe |
| H. E. Corley | River Springs |
| Harbison West | Seven Oaks |

0 1 2 mi

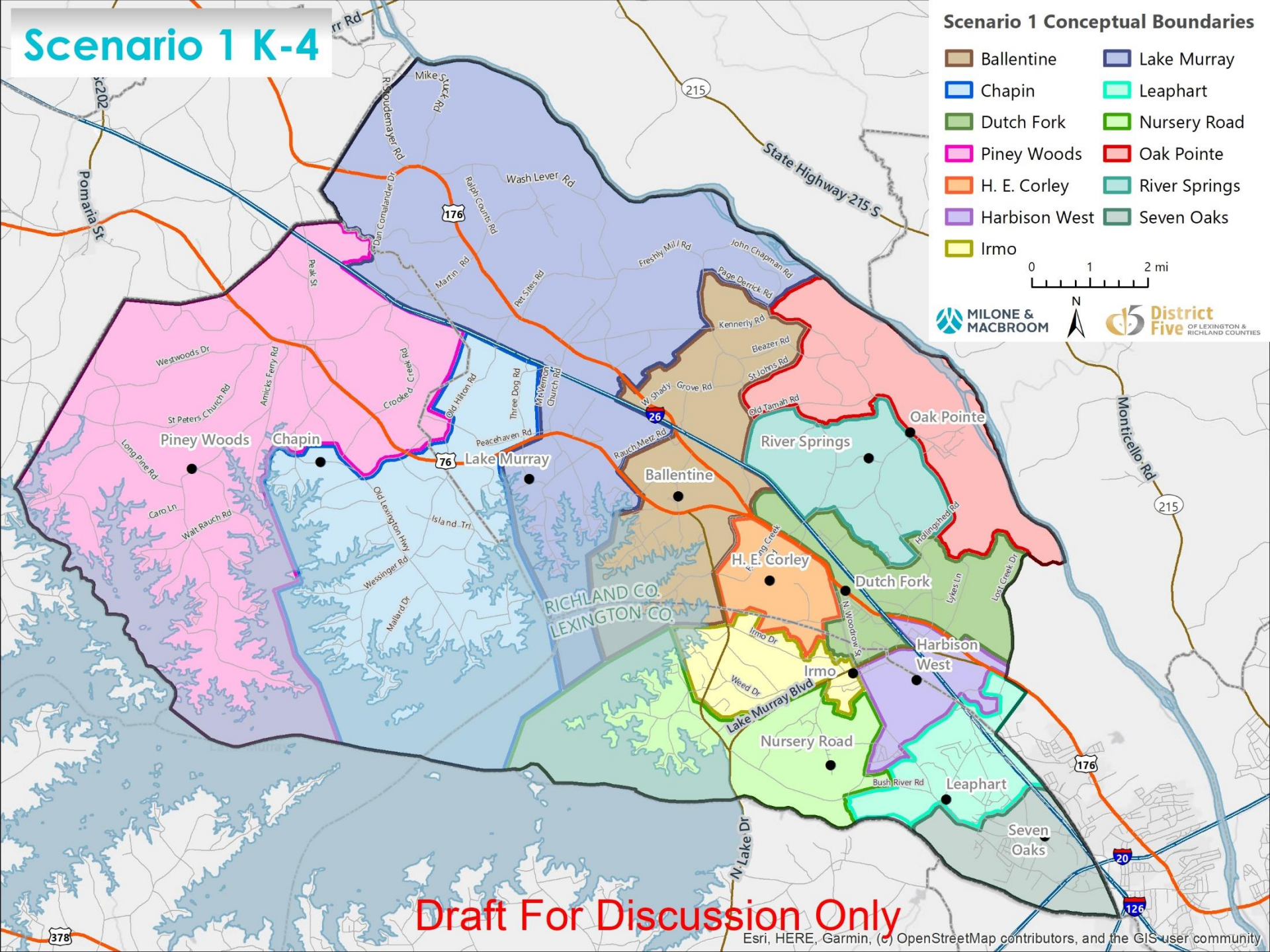
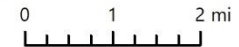


Draft For Discussion Only

Scenario 1 K-4

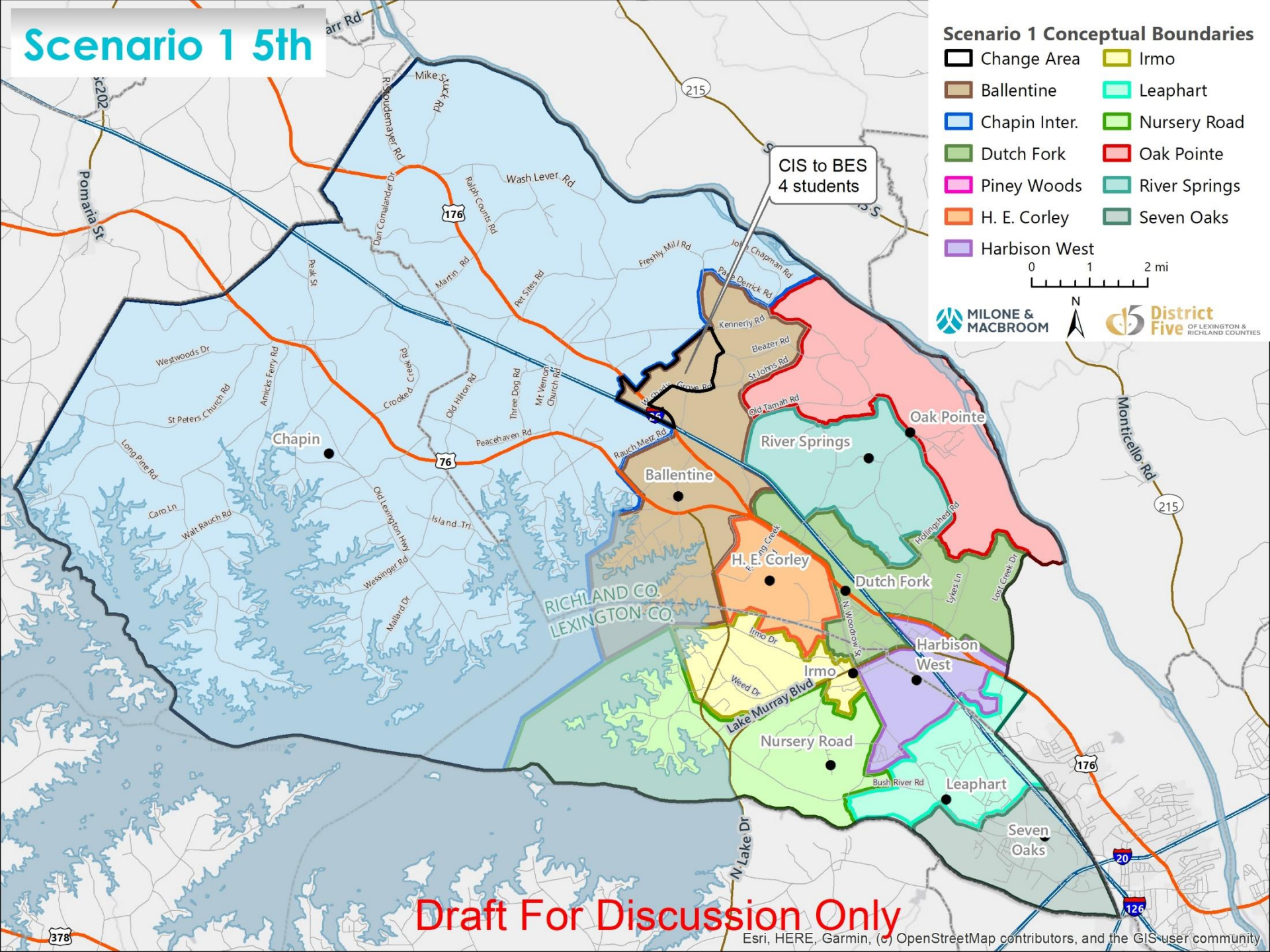
Scenario 1 Conceptual Boundaries

- | | |
|---------------|---------------|
| Ballentine | Lake Murray |
| Chapin | Leaphart |
| Dutch Fork | Nursery Road |
| Piney Woods | Oak Pointe |
| H. E. Corley | River Springs |
| Harbison West | Seven Oaks |
| Irmo | |



Draft For Discussion Only

Scenario 1 5th



Scenario 1 Projections: Elementary

School	2020-21	2021-22	2022-23	2023-24	2024-25	2025-26	2026-27	2027-28	2028-29	2029-30	Enrollment Target
Ballentine Elementary ¹	680	661	637	613	606	590	585	584	583	588	737
Chapin Elementary	745	745	780	753	739	730	726	726	733	731	824
Chapin Intermediate	Included in Intermediate/Middle School Analysis										(See IS/MS)
Dutch Fork Elementary Academy of Environmental Sciences ¹	523	522	522	512	497	517	512	511	512	514	591
H. E. Corley Leadership Magnet & Montessori Magnet	605	618	603	621	623	608	604	603	601	606	660
Harbison West Elementary (including Escolares Academy)	636	620	629	614	627	627	622	621	619	624	639
Irmo Elementary	548	558	583	591	588	590	585	583	582	588	576
Lake Murray Elementary ¹	645	663	674	675	679	670	671	668	674	672	764
Leaphart Elementary STEAM Magnet	502	516	505	504	512	515	509	508	508	510	733
Nursery Road Elementary	518	514	516	496	502	514	508	506	505	509	699
Oak Pointe Elementary	528	491	468	455	469	471	470	467	466	468	680
River Springs Elementary ¹	527	527	533	522	521	528	522	522	522	525	833
Seven Oaks Elementary Media Magnet	513	497	480	465	465	475	471	469	469	471	576
Piney Woods Elementary School	520	535	534	537	544	538	536	534	539	538	630

Source: MMI Medium Projections

1. Assumes current enrollment freeze students remain in current buildings

Totals exclude 5th grade students at Chapin Intermediate

Optimal


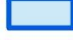
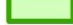
Near Target

Over Target

- All schools below or near their enrollment targets over the next decade
- Supports future growth in Chapin Cluster elementary schools

Scenario 1 Intermediate

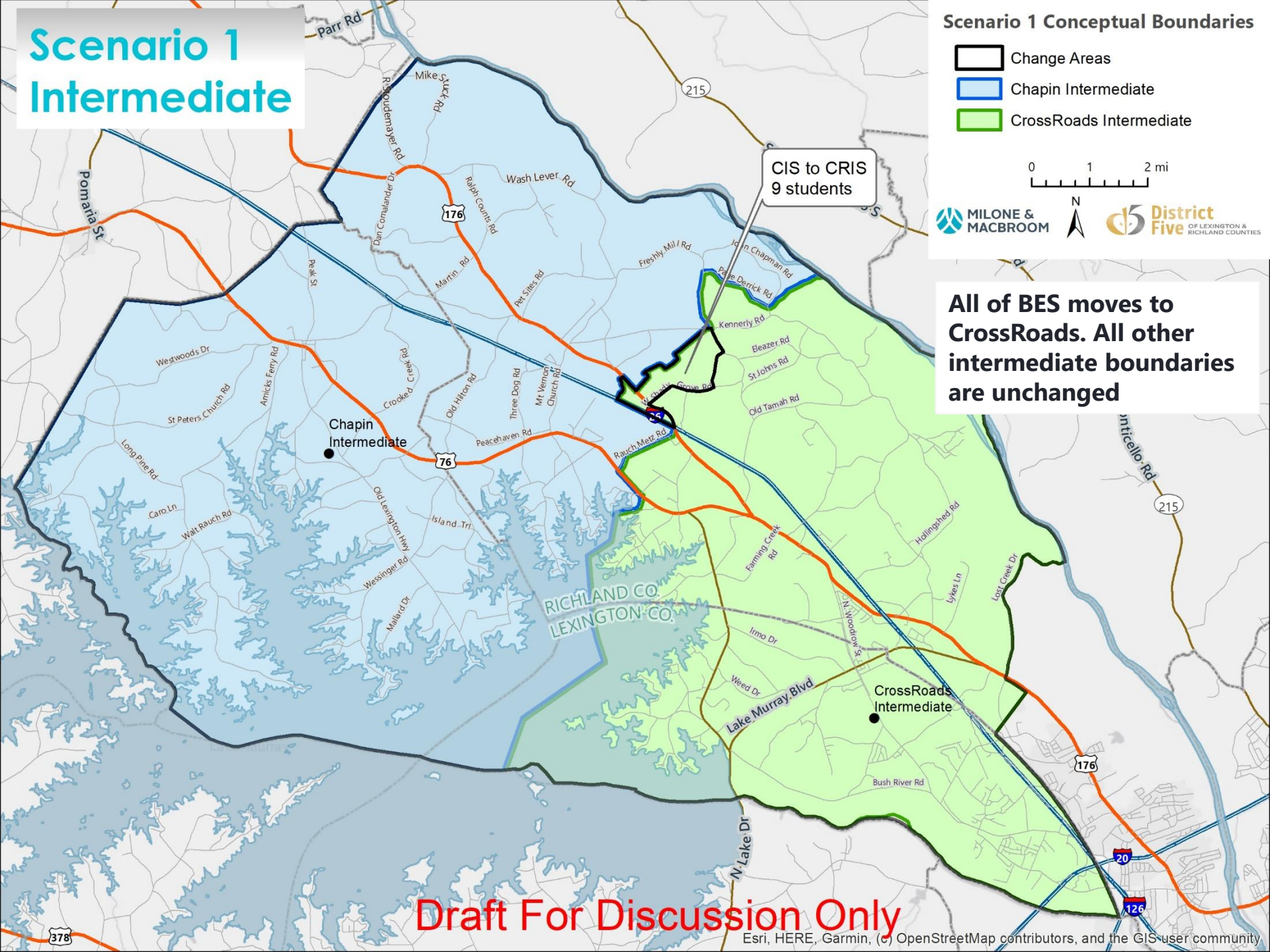
Scenario 1 Conceptual Boundaries

-  Change Areas
-  Chapin Intermediate
-  CrossRoads Intermediate

0 1 2 mi



All of BES moves to CrossRoads. All other intermediate boundaries are unchanged



Draft For Discussion Only

Scenario 1 Middle

Scenario 1 Conceptual Boundaries

- Change Areas
- Chapin Middle
- Dutch Fork Middle
- Irmo Middle

0 1 2 mi

MILONE & MACBROOM



District Five
OF LEXINGTON & RICHLAND COUNTIES

CMS to DFMS
46 students

**All of BES moves to
Dutch Fork MS. All
other MS boundaries
are unchanged**

Draft For Discussion Only

Esri, HERE, Garmin, (c) OpenStreetMap contributors, and the GIS user community

Scenario 1 Projections: Intermediate/Middle

School	2020-21	2021-22	2022-23	2023-24	2024-25	2025-26	2026-27	2027-28	2028-29	2029-30	Enrollment Target
Chapin Intermediate (5-6)	797	866	892	929	982	994	998	966	941	946	1,018
Chapin Middle	936	882	895	970	998	1,040	1,096	1,112	1,115	1,078	1,200
CrossRoads Intermediate	800	795	776	781	722	713	767	741	729	700	1,098
Dutch Fork Middle	1,023	1,007	1,040	1,025	1,014	979	937	966	983	960	1,149
Irmo Middle International Academic Magnet - iAM	1,022	986	1,009	997	992	964	939	958	970	944	1,181

Source: MMI Medium Projections

1. Assumes current enrollment freeze students remain in current buildings

75%-85%

86%-100%

>100%

- Over the next few years, enrollment in CIS and CMS will be lower than status quo will as BES moves entirely to Dutch Fork cluster
- End of enrollment freeze for new students in the Chapin Cluster puts greater number of students in CIS and CMS
- However, no Intermediate or Middle School projected to exceed 100% of enrollment target

Scenario 1 High

Scenario 1 Conceptual Boundaries

- Change Areas
- Chapin High
- Dutch Fork High
- Irmo High

0 1 2 mi

MILONE & MACBROOM



District Five
OF LEXINGTON & RICHLAND COUNTIES

CHS to DFHS
45 students

All of BES moves to Dutch Fork High School. All other High School boundaries are unchanged

Draft For Discussion Only

Esri, HERE, Garmin, (c) OpenStreetMap contributors, and the GIS user community

Scenario 1 Projections: High

School	2020-21	2021-22	2022-23	2023-24	2024-25	2025-26	2026-27	2027-28	2028-29	2029-30	Enrollment Target
Chapin High	1,515	1,584	1,581	1,608	1,605	1,626	1,663	1,763	1,832	1,884	1,700
Dutch Fork High (including STEM program)	1,680	1,680	1,603	1,581	1,578	1,561	1,574	1,532	1,489	1,486	2,207
Irmo High International School of the Arts (includes IB)	1,342	1,454	1,515	1,546	1,567	1,531	1,543	1,509	1,474	1,474	2,141
Spring Hill High Career Pathways Magnet	1,100	1,123	1,124	1,127	1,132	1,124	1,138	1,143	1,141	1,152	1,700

Source: MMI Medium Projections

Assumes current enrollment freeze students remain in current buildings

75%-85%

86%-100%

>100%

- CHS enrollment projected to add over 400 students over the next ten years
- CHS to exceed 100% of enrollment target beginning in 2027-28
 - Higher enrollment than status quo driven by end of enrollment freeze.
- No capacity concerns at the remaining three high schools

Scenario 1: Performance Matrix

Evaluation Criteria	Scenario 1 Performance
Overcrowding in Chapin Cluster	<ul style="list-style-type: none"> Elementary school overcrowding is addressed Overcrowding not addressed at CIS, CMS, and CHS
Enrollment Balance	<ul style="list-style-type: none"> Reduces overcrowding in the elementary schools Does not balance enrollment across all schools Overcrowding remains at CHS
Piney Woods Elementary	<ul style="list-style-type: none"> Created primarily from CES, with small area of LMES Utilization projected to be around 85% of enrollment target
Geographic Proximity	<ul style="list-style-type: none"> Reasonable travel times maintained Some students in Chapin Cluster may have longer travel times
Cluster Model and Feeder Pattern	<ul style="list-style-type: none"> Maintains current cluster boundaries, except BES split
Redistricting Impacts	<ul style="list-style-type: none"> Redistricts 11% of K-5 students, 1% of 6-8 students, and 1% of 9-12 students

Scenario 2: Objectives

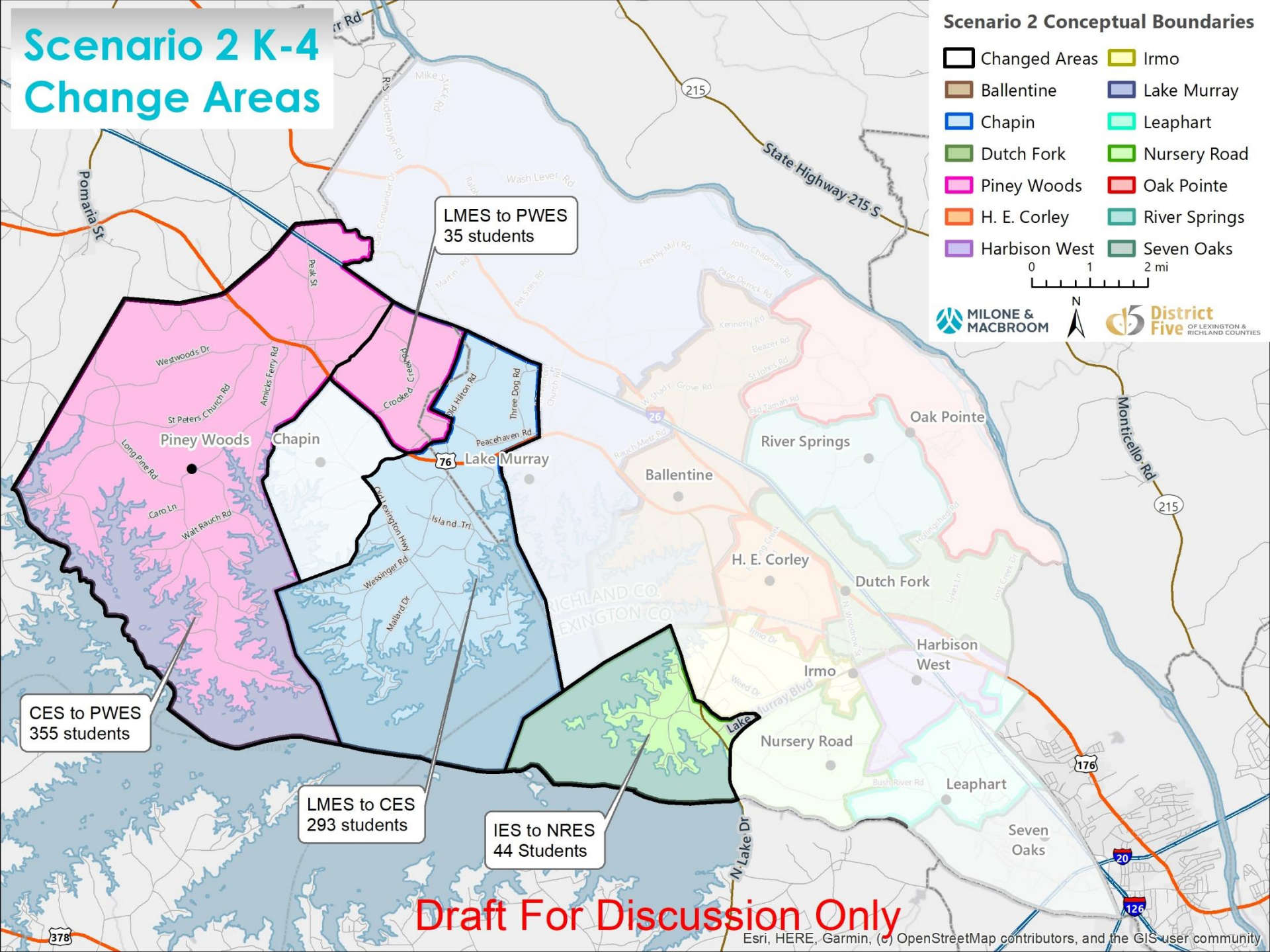
- Use Scenario 1 as a base, but try and address shortcomings
 - 5th grade added to PWES to fill out available space, shrink the size of the PWES attendance zone, and help lower enrollment at Chapin Intermediate
- Address overcrowding at Chapin High School
 - Shift some students to Dutch Fork High School using a phased in approach
 - Eliminate split feeder in Ballentine attendance zone (Same as Scenario 1)
- **Minimize disruption of students**

Scenario 2 K-4 Change Areas

Scenario 2 Conceptual Boundaries

- | | |
|---------------|---------------|
| Changed Areas | Irmo |
| Ballentine | Lake Murray |
| Chapin | Leaphart |
| Dutch Fork | Nursery Road |
| Piney Woods | Oak Pointe |
| H. E. Corley | River Springs |
| Harbison West | Seven Oaks |

0 1 2 mi

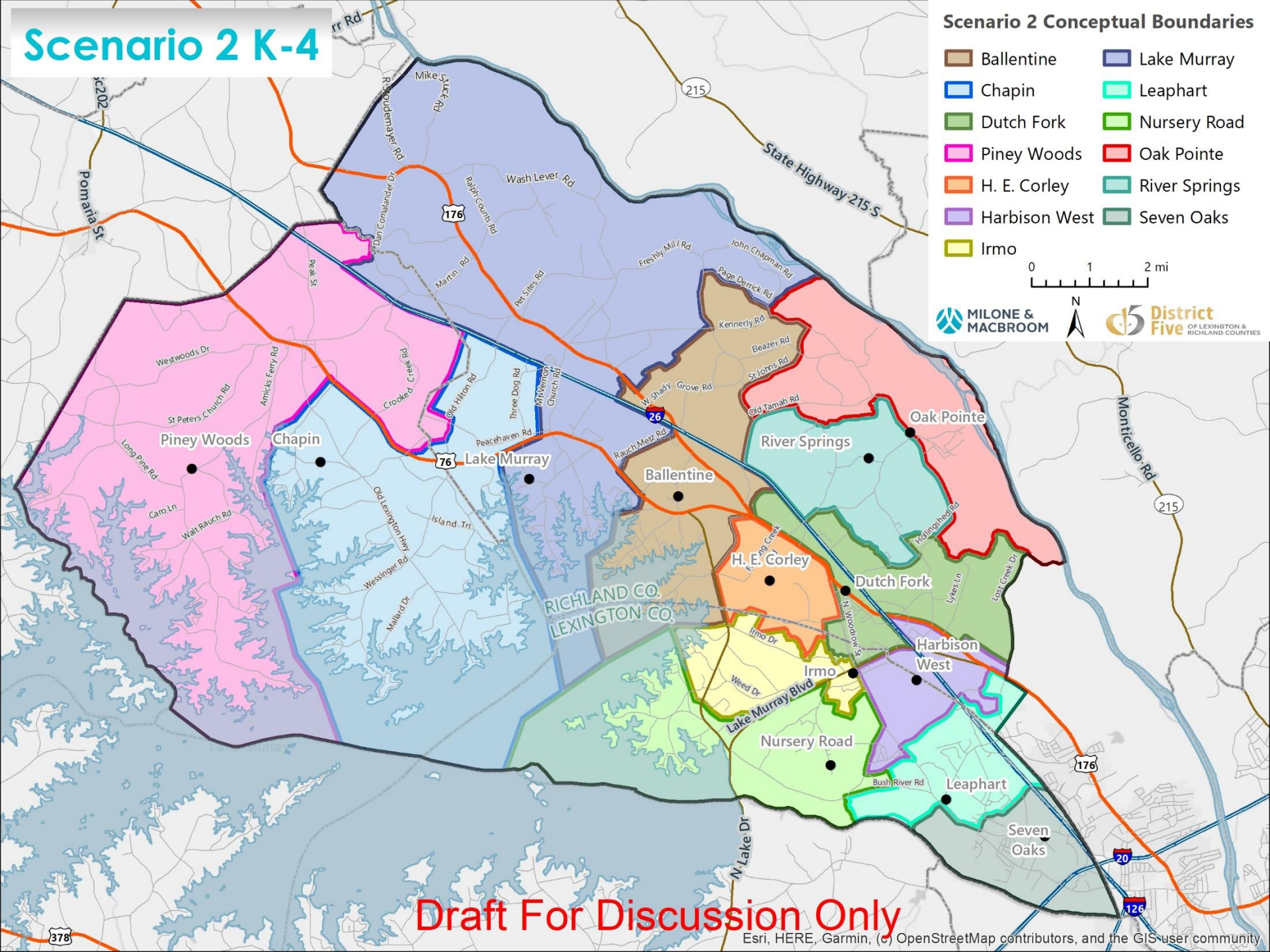
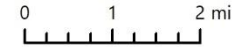


Draft For Discussion Only

Scenario 2 K-4

Scenario 2 Conceptual Boundaries

- | | |
|---------------|---------------|
| Ballentine | Lake Murray |
| Chapin | Leaphart |
| Dutch Fork | Nursery Road |
| Piney Woods | Oak Pointe |
| H. E. Corley | River Springs |
| Harbison West | Seven Oaks |
| Irmo | |



Draft For Discussion Only

Scenario 2 5th

- **Piney Woods becomes PK-5**
- **Split Feeder eliminated at BES**

CIS 5th Grade to PWES
83 students

CIS to BES
4 students

Scenario 2 Conceptual Boundaries

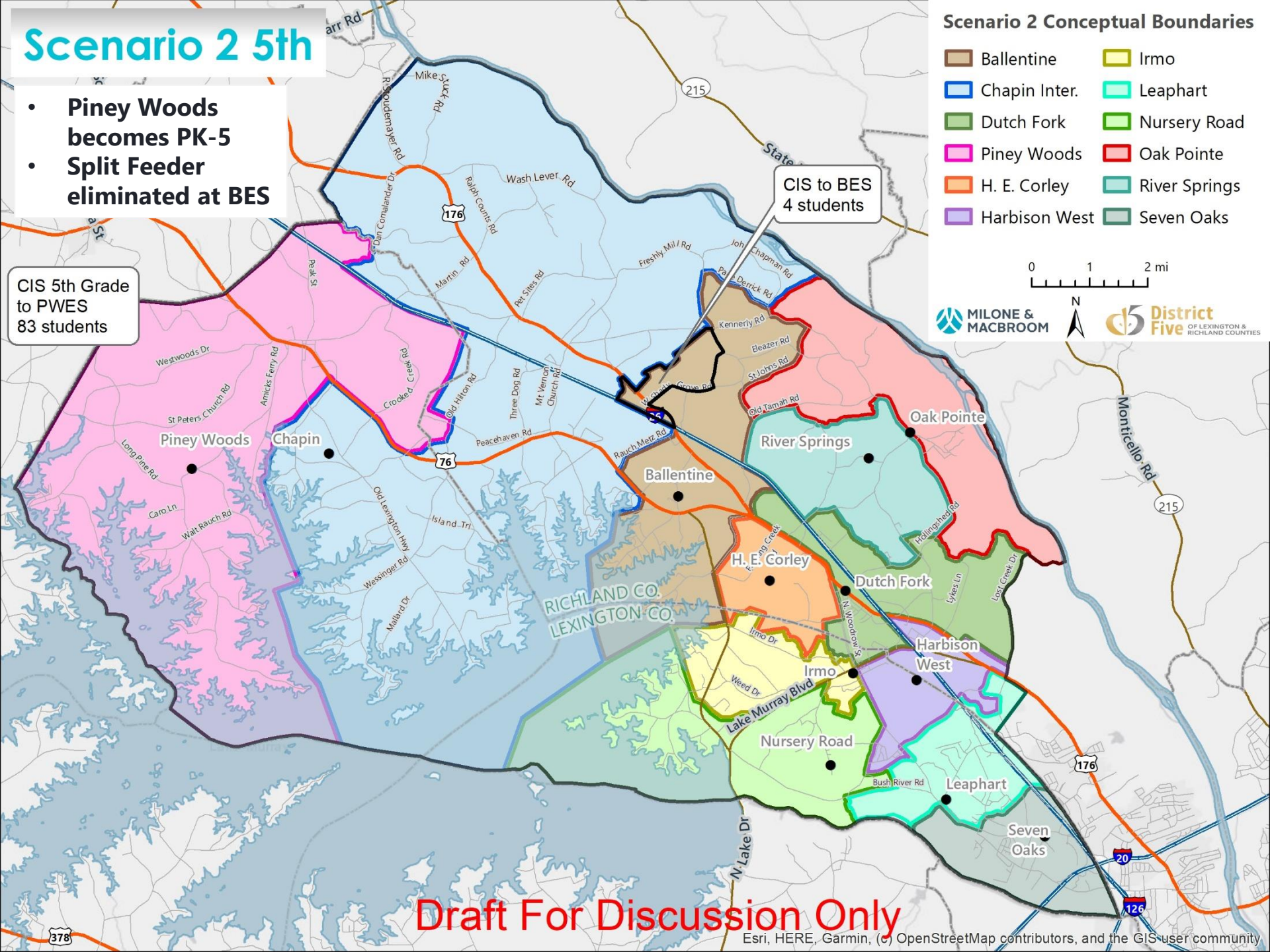
Ballentine	Irmo
Chapin Inter.	Leaphart
Dutch Fork	Nursery Road
Piney Woods	Oak Pointe
H. E. Corley	River Springs
Harbison West	Seven Oaks

0 1 2 mi

MILONE & MACBROOM



District Five
OF LEXINGTON & RICHLAND COUNTIES



Draft For Discussion Only

Esri, HERE, Garmin, (c) OpenStreetMap contributors, and the GIS user community

Scenario 2 Projections: Elementary

School	2020-21	2021-22	2022-23	2023-24	2024-25	2025-26	2026-27	2027-28	2028-29	2029-30	Enrollment Target
Ballentine Elementary ¹	680	661	638	612	605	590	585	583	583	588	737
Chapin Elementary	816	816	846	819	809	802	801	799	805	802	824
Chapin Intermediate	Included in Intermediate/Middle School Analysis										(See IS/MS)
Dutch Fork Elementary Academy of Environmental Sciences ¹	523	522	522	512	496	516	512	511	511	514	591
H. E. Corley Leadership Magnet & Montessori Magnet	605	618	603	621	624	608	603	602	602	607	660
Harbison West Elementary (including Escolares Academy)	636	621	629	613	628	628	622	621	619	625	639
Irmo Elementary	548	558	584	592	589	593	586	583	583	589	576
Lake Murray Elementary ¹	647	663	677	676	679	669	668	667	674	670	764
Leaphart Elementary STEAM Magnet	502	515	506	505	512	515	509	508	508	510	733
Nursery Road Elementary	518	514	516	496	503	514	508	506	504	509	699
Oak Pointe Elementary	528	492	467	456	470	471	469	468	467	469	680
River Springs Elementary ¹	527	528	534	522	522	528	523	521	522	525	833
Seven Oaks Elementary Media Magnet	513	497	480	467	466	475	471	469	469	471	576
Piney Woods Elementary School	532	548	562	561	568	570	566	564	565	568	630

Source: MMI Medium Projections

1. Assumes current enrollment freeze students remain in current buildings

Totals exclude 5th grade students at Chapin Intermediate

Optimal

Near Target


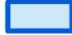
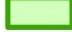
Over Target

- **Overcrowding addressed in the Chapin Cluster**
- Shifting 5th grade into Piney Woods fills out additional space and reduces crowding at Chapin Intermediate
- Supports long term growth in the Chapin Cluster

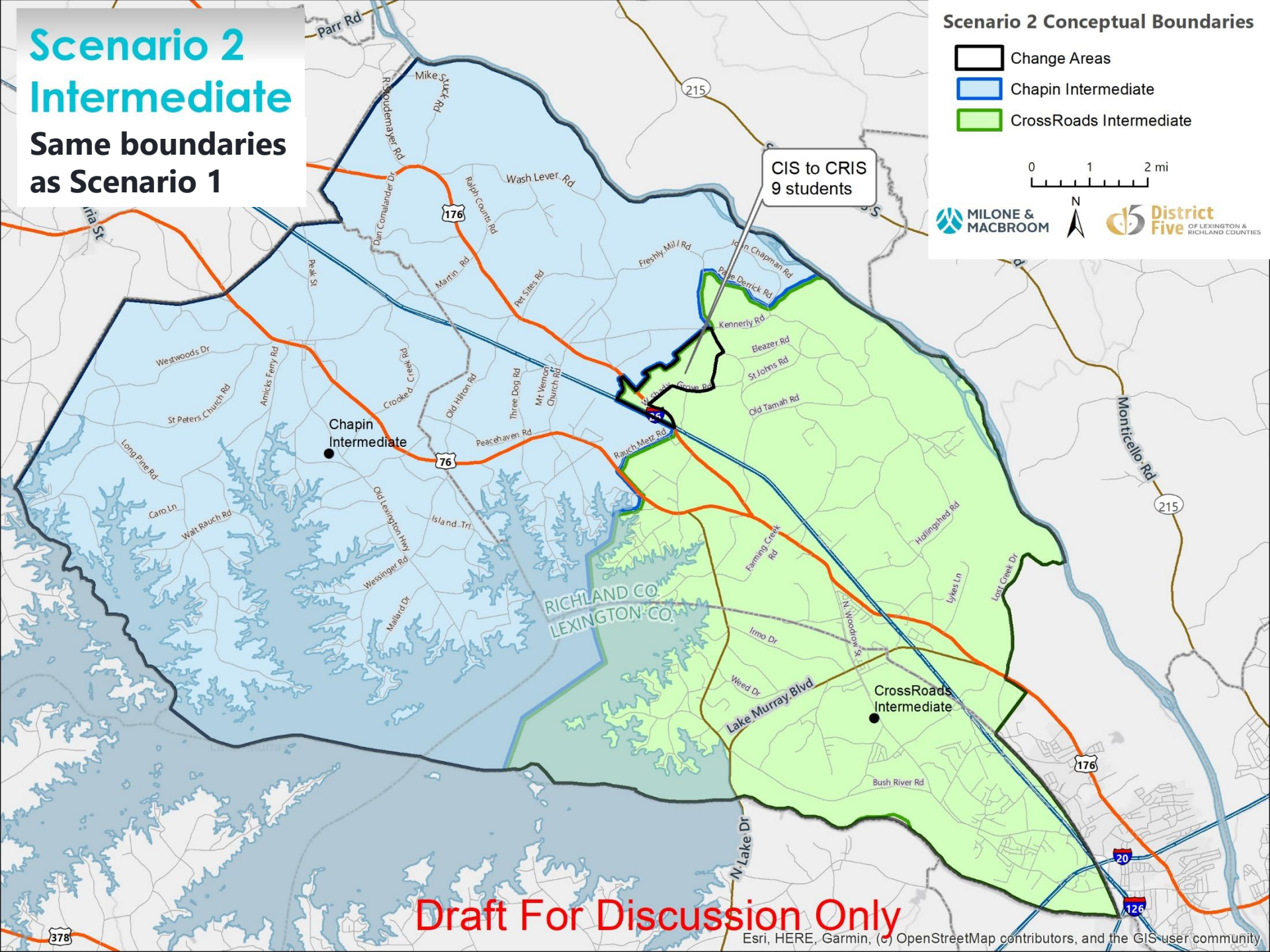
Scenario 2 Intermediate

Same boundaries
as Scenario 1

Scenario 2 Conceptual Boundaries

-  Change Areas
-  Chapin Intermediate
-  CrossRoads Intermediate

0 1 2 mi



Draft For Discussion Only

Esri, HERE, Garmin, (c) OpenStreetMap contributors, and the GIS user community

Scenario 2 Middle Same boundaries as Scenario 1

Scenario 2 Conceptual Boundaries

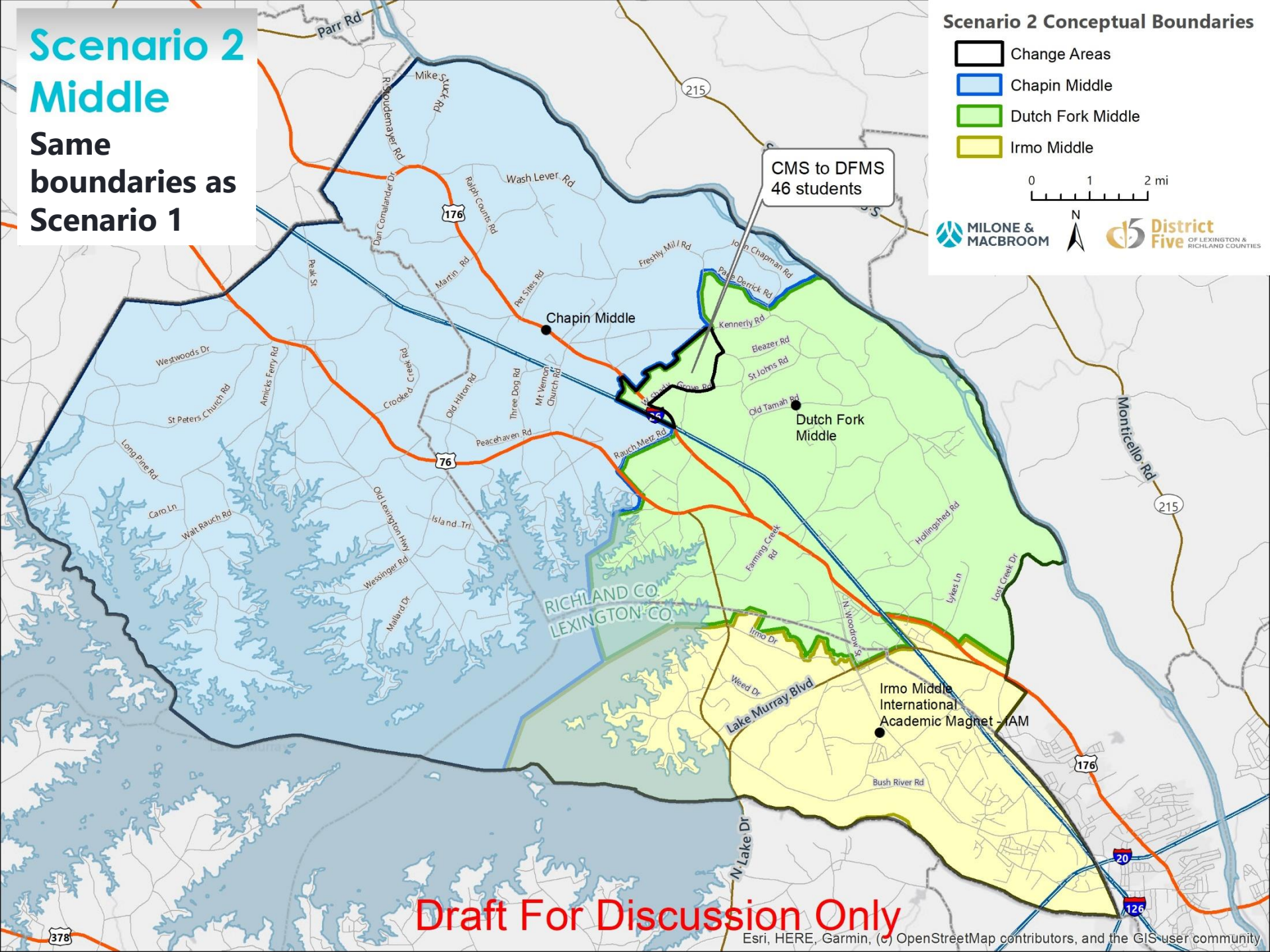
- Change Areas
- Chapin Middle
- Dutch Fork Middle
- Irmo Middle

0 1 2 mi

MILONE & MACBROOM



District Five
OF LEXINGTON & RICHLAND COUNTIES



Draft For Discussion Only

Esri, HERE, Garmin, (c) OpenStreetMap contributors, and the GIS user community

Scenario 2 Projections: Intermediate/Middle

School	2020-21	2021-22	2022-23	2023-24	2024-25	2025-26	2026-27	2027-28	2028-29	2029-30	Enrollment Target
Chapin Intermediate (5-6)	712	780	794	833	883	887	894	866	844	845	1,018
Chapin Middle	936	882	895	972	1,000	1,039	1,095	1,108	1,110	1,077	1,200
CrossRoads Intermediate	800	795	774	782	722	714	769	742	729	699	1,098
Dutch Fork Middle	1,023	1,007	1,040	1,024	1,014	980	938	969	986	960	1,149
Irmo Middle International Academic Magnet - iAM	1,022	986	1,009	996	990	964	939	959	972	945	1,181

Source: MMI Medium Projections

1. Assumes current enrollment freeze students remain in current buildings

75%-85%

86%-100%

>100%

- Shifting 5th grade to PWES lowers enrollment at CIS by ~120 students
- BES moves entirely to Dutch Fork Cluster. All other Intermediate and Middle school boundaries are unchanged
- CMS will exceed 90% utilization over the final four years of projections

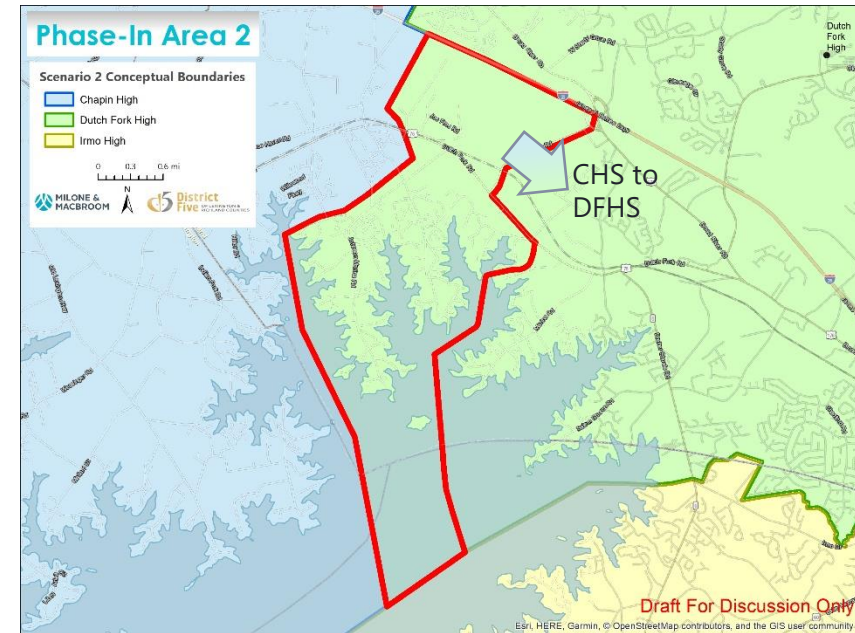
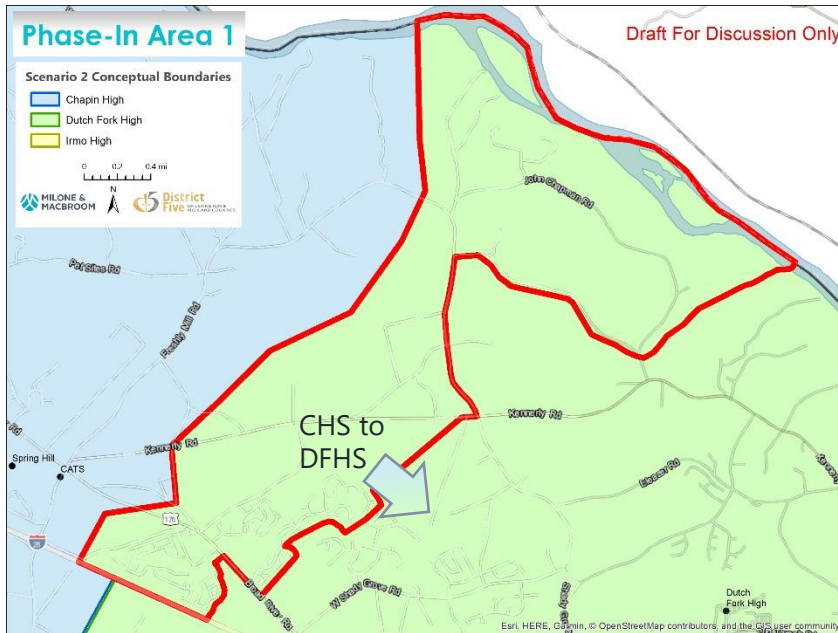
Scenario 2: High School “Phase-In” Areas

- Phase-In Areas can help address overcrowding at Chapin High School
 - Two areas of Chapin Cluster that are closest to Dutch Fork High School were selected.
 - Could potentially be implemented over time beginning with an incoming freshman class.
 - Existing high school students could be grandfathered, further reducing redistricting impacts.

Scenario 2: High School “Phase-In” Areas

- Based on utilization, Phase 1 could occur around the 2024-25 school year
- Final implementation date to be determined based on enrollment pressures

- Based on utilization, Phase 2 could occur around the 2027-28 school year
- Final implementation date to be determined based on enrollment pressures



Scenario 2 High

Scenario 2 Conceptual Boundaries

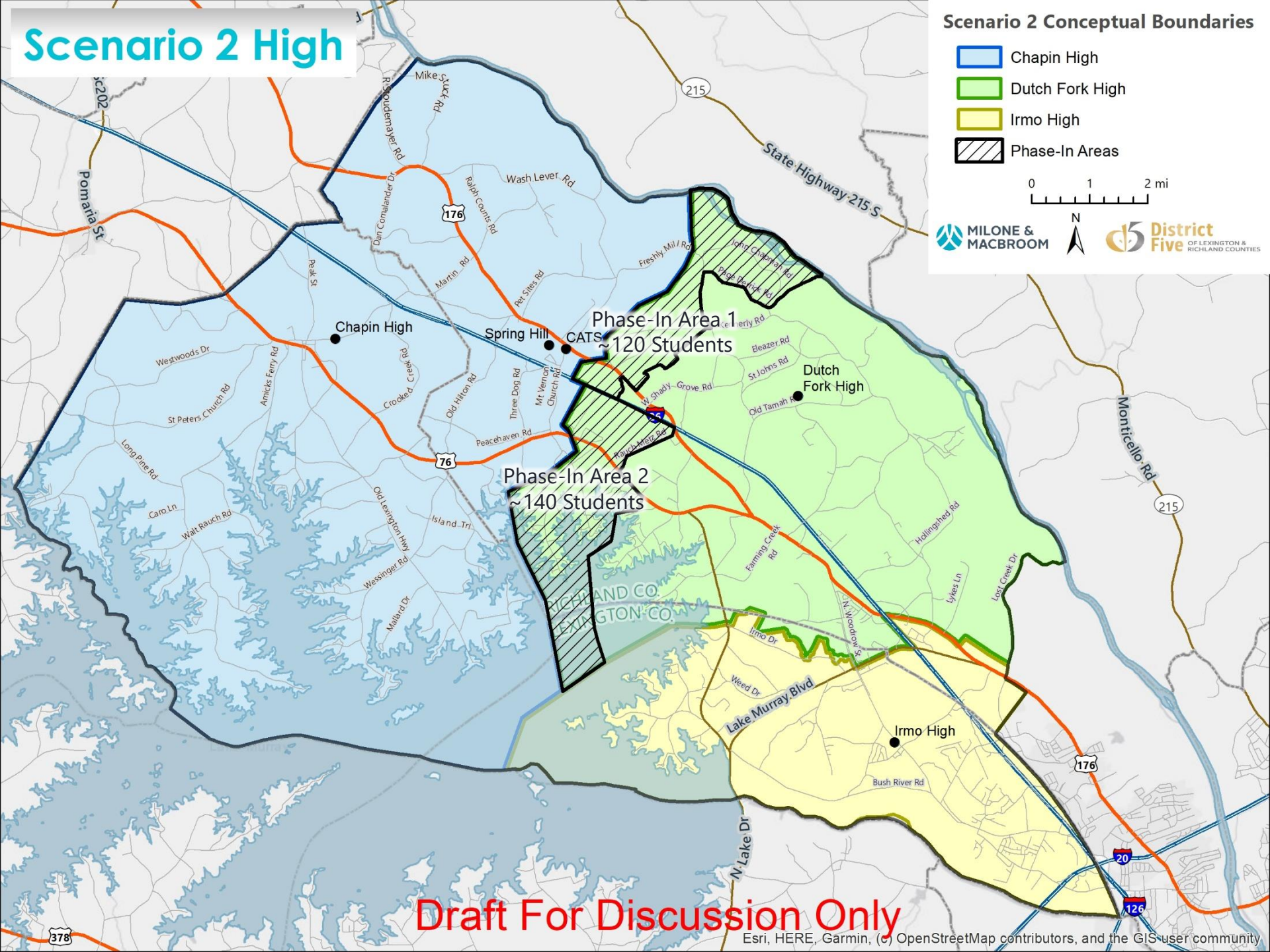
- Chapin High
- Dutch Fork High
- Irmo High
- Phase-In Areas

0 1 2 mi

MILONE & MACBROOM



District Five
OF LEXINGTON & RICHLAND COUNTIES



Draft For Discussion Only

Esri, HERE, Garmin, (c) OpenStreetMap contributors, and the GIS user community

Scenario 2 Projections: High

	Scenario 1 Boundaries				Phase-In Area 1			Phase-In Area 2			Enrollment Target
School	2020-21	2021-22	2022-23	2023-24	2024-25	2025-26	2026-27	2027-28	2028-29	2029-30	
Chapin High	1,515	1,584	1,581	1,608	1,487	1,511	1,543	1,496	1,557	1,599	1,700
Dutch Fork High (including STEM program)	1,680	1,680	1,603	1,581	1,688	1,667	1,683	1,767	1,727	1,728	2,207
Irmo High International School of the Arts (includes IB)	1,342	1,454	1,515	1,546	1,572	1,535	1,547	1,526	1,494	1,499	2,141
Spring Hill High Career Pathways Magnet	1,100	1,123	1,124	1,127	1,135	1,129	1,145	1,158	1,158	1,170	1,700

Source: MMI Medium Projections

Assumes current enrollment freeze students remain in current building

75%-85%

86%-100%

>100%

- Flexible approach. Phase-In can be implemented when enrollment pressures warrant
- Phase-In Area 1 would shift ~120 students to Dutch Fork HS at full implementation
- Phase-In Area 2 would shift an additional ~140 students to Dutch Fork HS
- Addresses overcrowding at Chapin High School and efficiently uses space at Dutch Fork High School

Scenario 2: Performance Matrix

Evaluation Criteria	Scenario 2 Performance
Overcrowding in Chapin Cluster	<ul style="list-style-type: none"> Elementary school overcrowding is addressed Addresses overcrowding at CIS and CHS
Enrollment Balance	<ul style="list-style-type: none"> Reduces overcrowding in the elementary schools Improves enrollment balance at IS, MS, and HS levels
Piney Woods Elementary	<ul style="list-style-type: none"> Created primarily from CES, with small area of LMES Addition of 5th Grade cohort results in efficient use of the building Maintains more contiguous attendance zone for CES
Geographic Proximity	<ul style="list-style-type: none"> Reasonable travel times maintained Some students in Chapin Cluster will have longer travel times
Cluster Model and Feeder Pattern	<ul style="list-style-type: none"> Introduces "Split Feeder" for CMS – some students would go to CHS and others to DFHS Eliminates BES Split Feeder
Redistricting Impacts	<ul style="list-style-type: none"> Redistricts 11% of K-5 students, 1% of 6-8 students, and 3% of 9-12 students (includes both Phase-In areas)

Scenario 3: Objectives

- Balance elementary enrollments – strive for between 85% and 100% utilization at each school
 - Reduce overcrowding in Chapin Cluster
- Add 5th grade into LMES, CES, and PWES – this helps ensure enrollment balance is maintained at Chapin High School
- Maintain direct feeder pattern and clusters
 - Based on new elementary attendance zones
- **Strive for enrollment balance and equity**

Scenario 3 K-5 Change Areas

5th Graders from CIS:
54 to BES
109 to CES
83 to PWES
124 to LMES

LMES to OPES
15 students

LMES to PWES
37 students

LMES to BES
238 students

BES to OPES
25 students

BES to RSES
266 students

RSES to DFES
83 students

DFES to HWES
51 students

HWES to LES
120 students

CES to PWES
355 students

LMES to CES
131 students

IES to NRES
88 students

HWES to NRES
32 students

DFES to RSES
45 students

Scenario 3 Conceptual Boundaries

- | | |
|---------------|---------------|
| Changed Areas | Irmo |
| Ballentine | Lake Murray |
| Chapin | Leaphart |
| Dutch Fork | Nursery Road |
| Piney Woods | Oak Pointe |
| H. E. Corley | River Springs |
| Harbison West | Seven Oaks |

0 1 2 mi

MILONE & MACBROOM



District Five
OF LEXINGTON & RICHLAND COUNTIES

Draft For Discussion Only

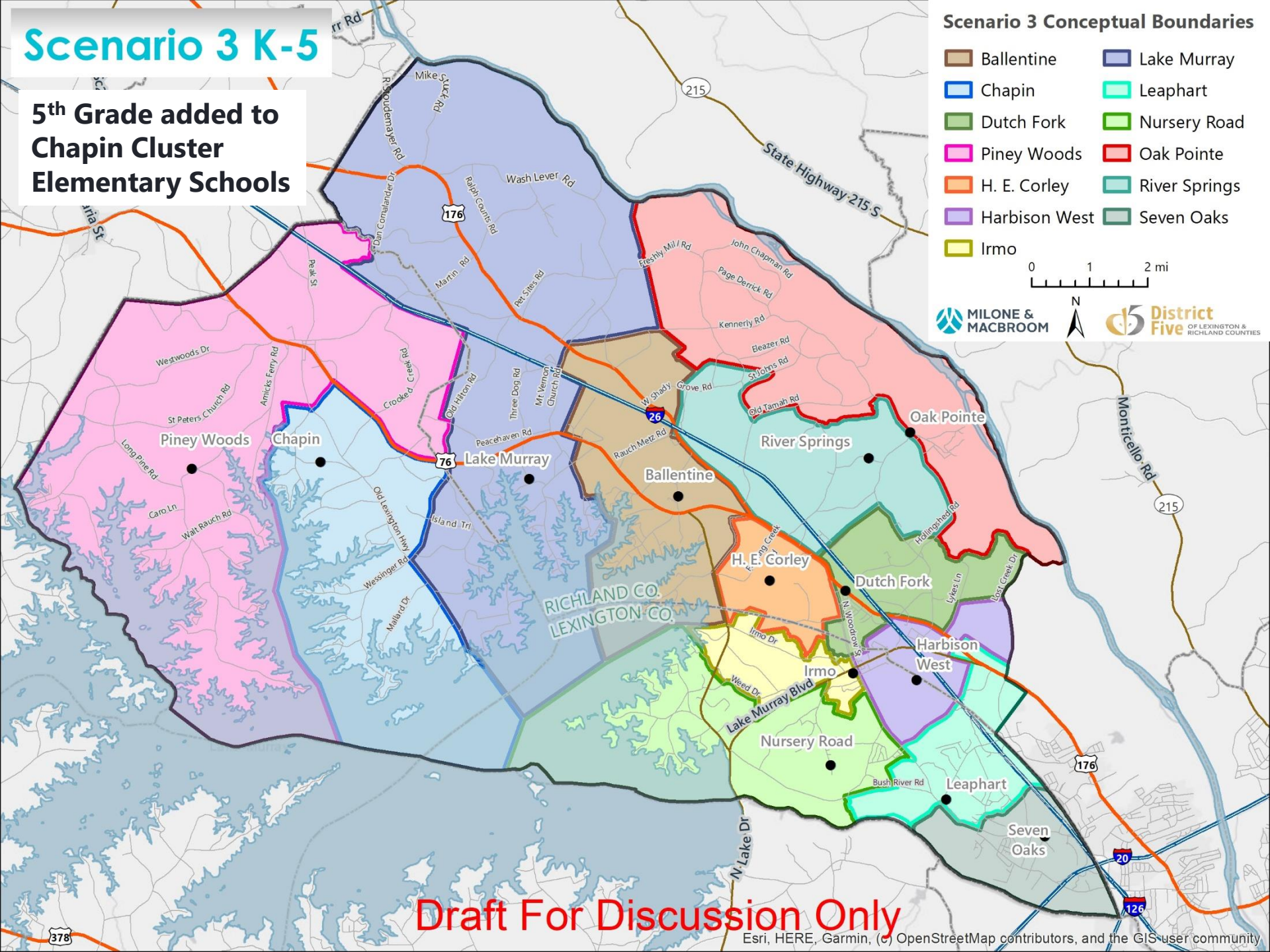
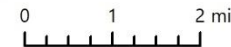
Esri, HERE, Garmin, (c) OpenStreetMap contributors, and the GIS user community

Scenario 3 K-5

5th Grade added to
Chapin Cluster
Elementary Schools

Scenario 3 Conceptual Boundaries

- | | |
|---------------|---------------|
| Ballentine | Lake Murray |
| Chapin | Leaphart |
| Dutch Fork | Nursery Road |
| Piney Woods | Oak Pointe |
| H. E. Corley | River Springs |
| Harbison West | Seven Oaks |
| Irmo | |



Draft For Discussion Only

Scenario 3 Projections: Elementary

School	2020-21	2021-22	2022-23	2023-24	2024-25	2025-26	2026-27	2027-28	2028-29	2029-30	Enrollment Target
Ballentine Elementary ¹	713	719	712	694	698	690	682	679	677	682	737
Chapin Elementary (PK-5)	770	792	788	795	765	757	751	748	749	752	824
Chapin Intermediate	Included in Intermediate/Middle School Analysis										(See IS/MS)
Dutch Fork Elementary Academy of Environmental Sciences ¹	503	497	495	493	483	499	494	493	492	495	591
H. E. Corley Leadership Magnet & Montessori Magnet	604	616	602	619	621	607	601	600	599	604	660
Harbison West Elementary (including Escolares Academy)	537	518	520	497	495	513	506	505	504	509	639
Irmo Elementary	503	506	527	538	534	532	527	525	525	529	576
Lake Murray Elementary (K-5) ¹	658	678	689	704	710	711	705	700	700	706	764
Leaphart Elementary STEAM Magnet	620	635	626	625	640	636	631	628	628	633	733
Nursery Road Elementary	595	596	603	584	592	599	595	594	592	597	699
Oak Pointe Elementary	568	532	505	497	509	511	509	507	506	507	680
River Springs Elementary ¹	761	769	770	759	758	759	753	751	752	756	833
Seven Oaks Elementary Media Magnet	512	496	478	464	463	473	469	467	467	469	576
Piney Woods Elementary School (PK-5)	534	549	562	563	569	571	566	564	566	569	630

Source: MMI Medium Projections

1. Assumes current enrollment freeze students remain in current buildings

Totals exclude 5th grade students at Chapin Intermediate

Optimal


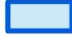
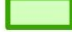
Near Target

Over Target

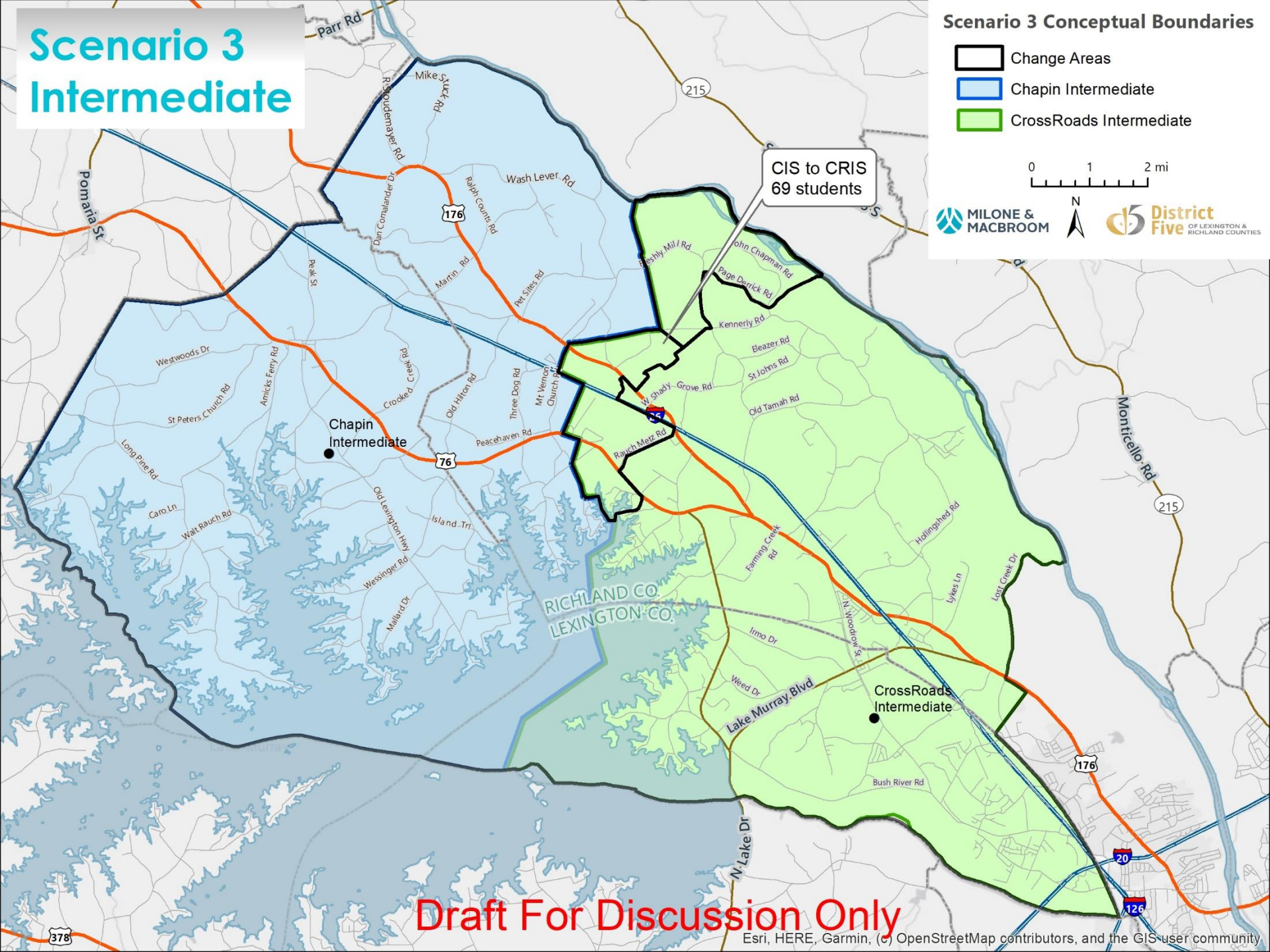
- **Balanced elementary enrollment.** No schools projected to exceed enrollment target. Most are in “optimal” range.
- 5th grade added to CES, LMES, and PWES. Ensures efficient use of space in the Chapin Cluster without overloading CIS, CMS, or CHS.
- Provides greatest educational flexibility since space is equally dispersed throughout the District.

Scenario 3 Intermediate

Scenario 3 Conceptual Boundaries

-  Change Areas
-  Chapin Intermediate
-  CrossRoads Intermediate

0 1 2 mi



Draft For Discussion Only

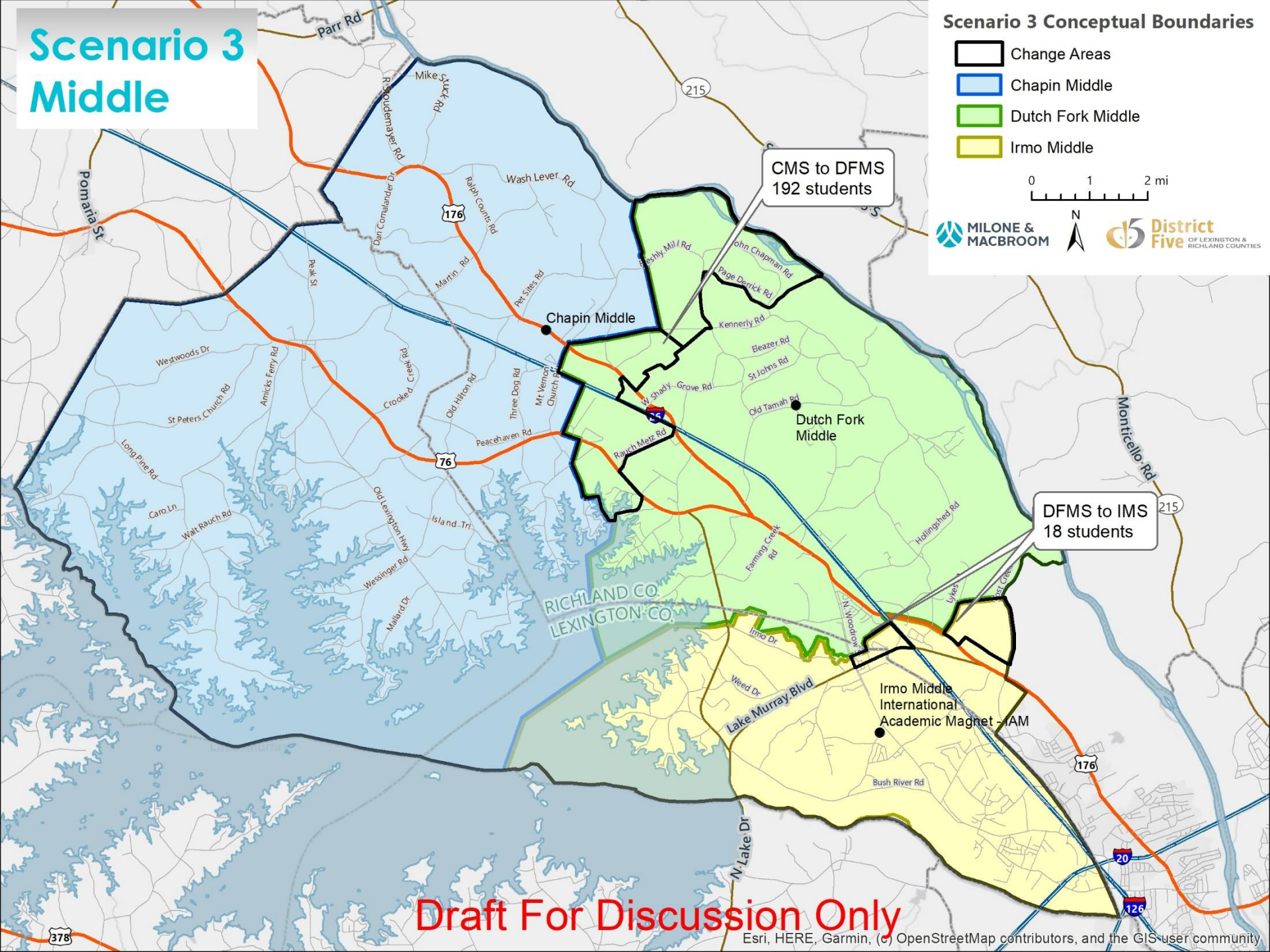
Esri, HERE, Garmin, (c) OpenStreetMap contributors, and the GIS user community

Scenario 3 Middle

Scenario 3 Conceptual Boundaries

- Change Areas
- Chapin Middle
- Dutch Fork Middle
- Irmo Middle

0 1 2 mi



Draft For Discussion Only

Scenario 3 Projections: Intermediate/Middle

School	2020-21	2021-22	2022-23	2023-24	2024-25	2025-26	2026-27	2027-28	2028-29	2029-30	Enrollment Target
Chapin Intermediate	351	359	400	379	437	422	435	420	412	399	1,018
Chapin Middle	793	754	755	807	829	869	917	915	912	888	1,200
CrossRoads Intermediate	858	866	855	856	802	797	863	829	816	782	1,098
Dutch Fork Middle	1,142	1,109	1,151	1,148	1,143	1,108	1,067	1,109	1,131	1,097	1,149
Irmo Middle International Academic Magnet - iAM	1,046	1,012	1,038	1,038	1,032	1,007	989	1,013	1,026	998	1,181

Source: MMI Medium Projections

1. Assumes current enrollment freeze students remain in current buildings

75%-85%

86%-100%

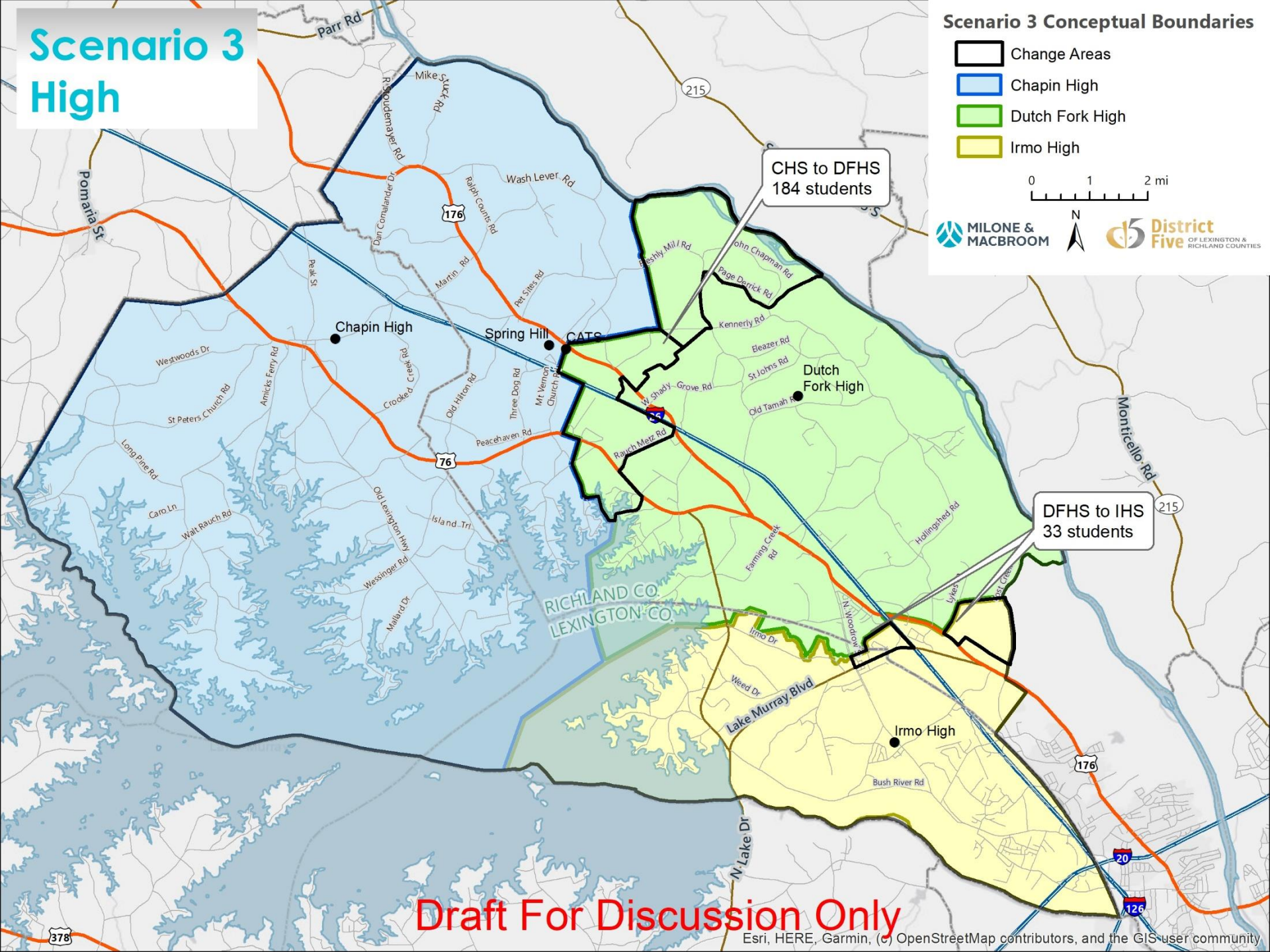
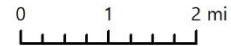
>100%

- Shifting 5th grade to PWES, CES, and LMES reduces enrollment at CIS by about half
 - 5th grade could be switched back to CIS in the future if warranted
- Shifts students from Chapin Cluster to Dutch Fork Cluster. Small area of Dutch Fork Cluster shifts to Irmo Cluster
- Addresses overcrowding at CIS and CMS, but creates new overcrowding at DFMS**
 - Near 100% utilization over the next four years. Will exceed 90% utilization throughout the next ten years.

Scenario 3 High

Scenario 3 Conceptual Boundaries

- Change Areas
- Chapin High
- Dutch Fork High
- Irmo High



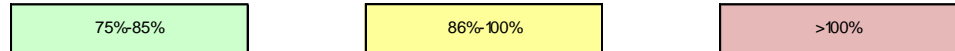
Draft For Discussion Only

Scenario 3 Projections: High

School	2020-21	2021-22	2022-23	2023-24	2024-25	2025-26	2026-27	2027-28	2028-29	2029-30	Enrollment Target
Chapin High	1,340	1,379	1,372	1,379	1,366	1,380	1,402	1,485	1,544	1,580	1,700
Dutch Fork High (including STEM program)	1,827	1,852	1,780	1,772	1,770	1,751	1,774	1,740	1,702	1,710	2,207
Irmo High International School of the Arts (includes IB)	1,368	1,486	1,548	1,582	1,613	1,585	1,602	1,578	1,548	1,553	2,141
Spring Hill High Career Pathways Magnet	1,102	1,124	1,123	1,129	1,133	1,126	1,140	1,144	1,142	1,153	1,700

Source: MMI Medium Projections

Assumes current enrollment freeze students remain in current buildings



- **Achieves enrollment balance at the High School level.** No schools projected to exceed enrollment target
- Shifts students out of Chapin High School and into Dutch Fork. Small area of Dutch Fork shifted to Irmo.
 - Efficient use of space at Dutch Fork High School
- Chapin High School projected to exceed 90% utilization over the last two years of the projections

Scenario 3: Performance Matrix

Evaluation Criteria	Scenario 3 Performance
Overcrowding in Chapin Cluster	<ul style="list-style-type: none"> Elementary school overcrowding is addressed Reduces overcrowding at CIS, CMS, and CHS
Enrollment Balance	<ul style="list-style-type: none"> Enrollment balance achieved at all elementary schools Causes DFMS to be overcrowded Inefficient use of space at CIS
Piney Woods Elementary	<ul style="list-style-type: none"> Created primarily from CES, with small area of LMES Addition of 5th Grade cohort results in efficient use of building
Geographic Proximity	<ul style="list-style-type: none"> Reasonable travel times maintained Some students in Chapin Cluster will have longer travel times
Cluster Model and Feeder Pattern	<ul style="list-style-type: none"> Direct feeder maintained. Based on new elementary attendance zones Eliminates BES Split Feeder
Redistricting Impacts	<ul style="list-style-type: none"> Redistricts 26% of K-5 students, 7% of 6-8 students, and 4% of 9-12 students Many small moves = smaller peer groups

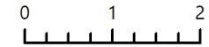
Scenario 4: Objectives

- Reduce overcrowding in Chapin Cluster
 - Add 5th grade into PWES – this helps ensure enrollment balance is maintained at Chapin High School
 - Eliminate split feeder in Ballentine attendance zone
- Improve enrollment balance in Dutch Fork and Irmo Clusters through “pocket” redistricting
- Implement Split Feeder Pattern for Middle and High Schools beginning in 7th grade
 - Lake Murray split between Chapin and Dutch Fork
 - H.E. Corley split between Dutch Fork and Irmo
 - Could potentially be phased in beginning with 7th grade class
- **Balanced approach that considers equity, enrollment balance, and disruption**

Scenario 4 K-5 Change Areas

Scenario 4 Conceptual Boundaries

- Changed Areas
- Irmo
- Ballentine
- Chapin
- Dutch Fork
- Piney Woods
- H. E. Corley
- Harbison West
- Lake Murray
- Leaphart
- Nursery Road
- Oak Pointe
- River Springs
- Seven Oaks



CIS to PWIS
5th Grade
83 students

LMES to PWES
37 students

CIS to BES
5th Grade
4 students

BES to RSES
32 students

DFES to RSES
45 students

HECES to DFES
16 students

CES to PWES
355 students

LMES to CES
274 students

IES to NRES
38 students

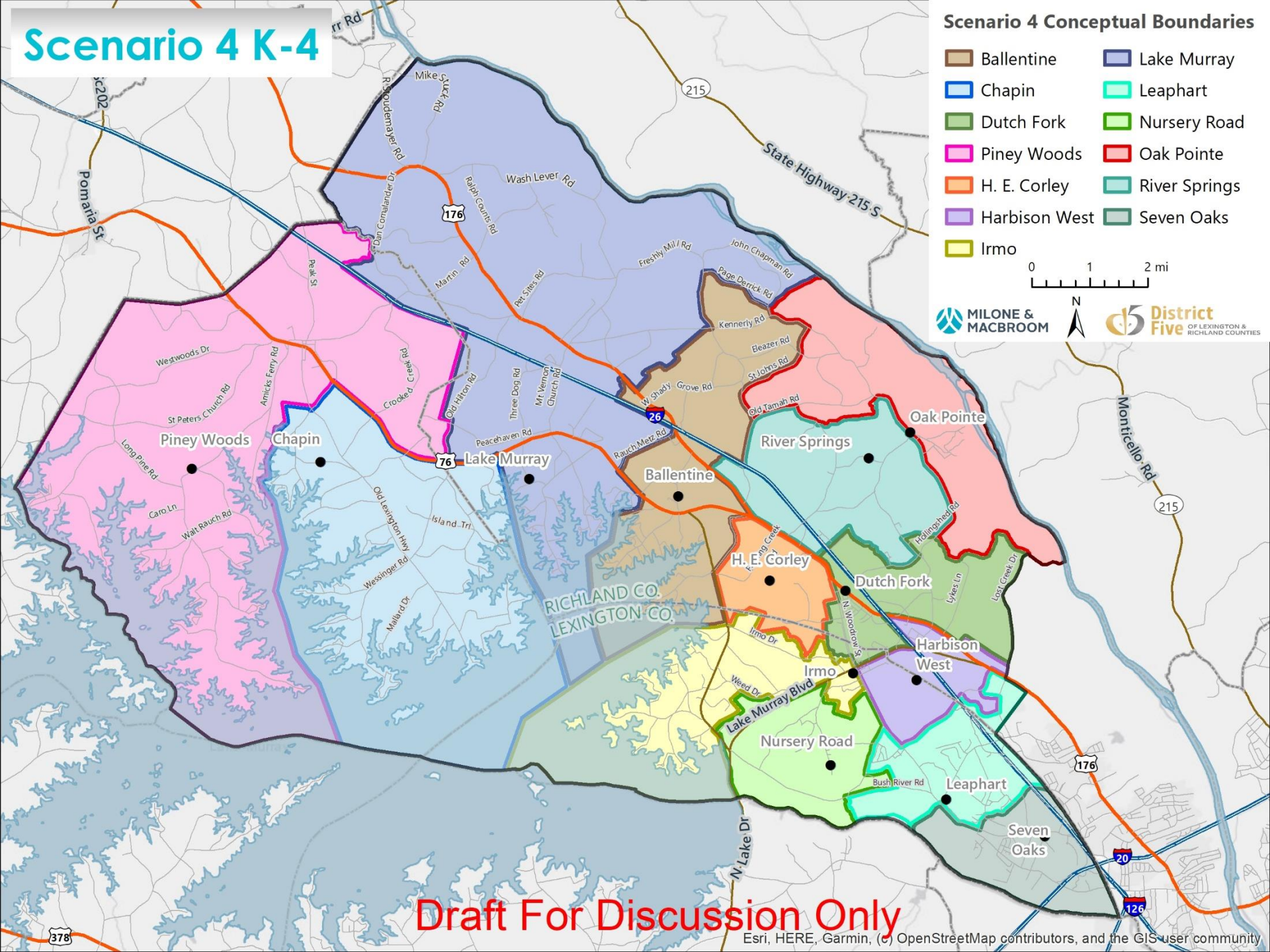
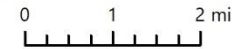
HWES to LES
32 students

Draft For Discussion Only

Scenario 4 K-4

Scenario 4 Conceptual Boundaries

- | | |
|---------------|---------------|
| Ballentine | Lake Murray |
| Chapin | Leaphart |
| Dutch Fork | Nursery Road |
| Piney Woods | Oak Pointe |
| H. E. Corley | River Springs |
| Harbison West | Seven Oaks |
| Irmo | |



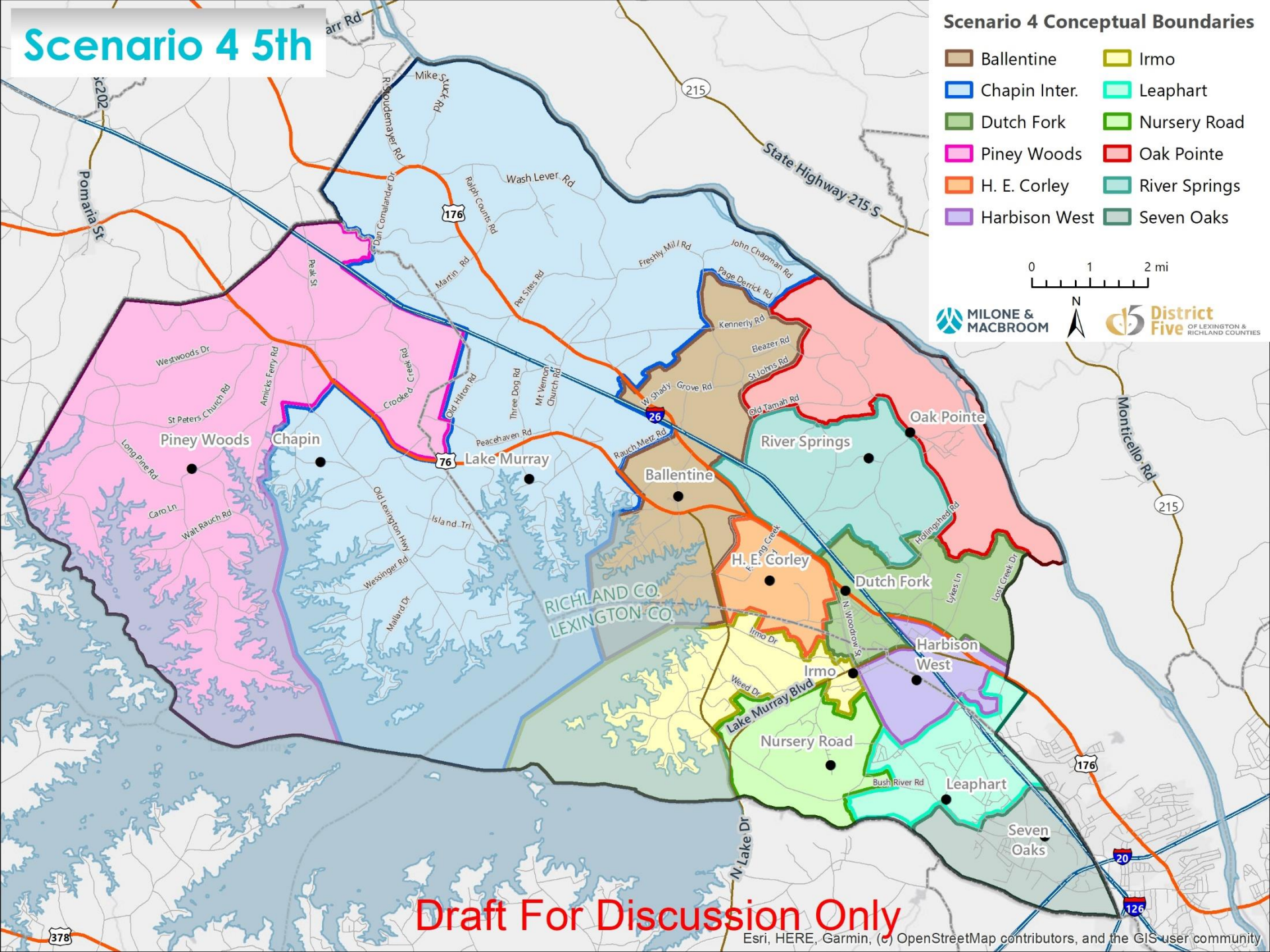
Draft For Discussion Only

Scenario 4 5th

Scenario 4 Conceptual Boundaries

- | | |
|---------------|---------------|
| Ballentine | Irmo |
| Chapin Inter. | Leaphart |
| Dutch Fork | Nursery Road |
| Piney Woods | Oak Pointe |
| H. E. Corley | River Springs |
| Harbison West | Seven Oaks |

0 1 2 mi



Draft For Discussion Only

Scenario 4 Projections: Elementary

School	2020-21	2021-22	2022-23	2023-24	2024-25	2025-26	2026-27	2027-28	2028-29	2029-30	Enrollment Target
Ballentine Elementary ¹	646	627	603	576	571	556	552	550	550	554	737
Chapin Elementary	803	794	828	796	792	787	780	780	788	785	824
Chapin Intermediate	Included in Intermediate/Middle School Analysis										(See IS/MS)
Dutch Fork Elementary Academy of Environmental Sciences ¹	484	480	480	472	455	472	467	466	463	469	591
H. E. Corley Leadership Magnet & Montessori Magnet	588	600	584	600	605	588	582	582	579	584	660
Harbison West Elementary (including Escolares Academy)	604	594	596	580	591	594	589	587	586	589	639
Irmo Elementary	544	542	557	565	563	559	554	554	554	557	576
Lake Murray Elementary ¹	664	678	699	694	701	693	691	686	696	693	764
Leaphart Elementary STEAM Magnet	533	547	542	544	553	553	549	548	548	552	733
Nursery Road Elementary	520	531	538	520	520	536	531	531	531	534	699
Oak Pointe Elementary	528	491	467	455	470	472	470	467	465	468	680
River Springs Elementary ¹	615	620	628	619	618	627	619	616	615	619	833
Seven Oaks Elementary Media Magnet	512	497	479	466	463	474	470	468	468	471	576
Piney Woods Elementary School	534	552	563	564	570	572	567	566	567	570	630

Source: MMI Medium Projections

1. Assumes current enrollment freeze students remain in current buildings

Totals exclude 5th grade students at Chapin Intermediate

Optimal


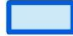

Near Target

Over Target

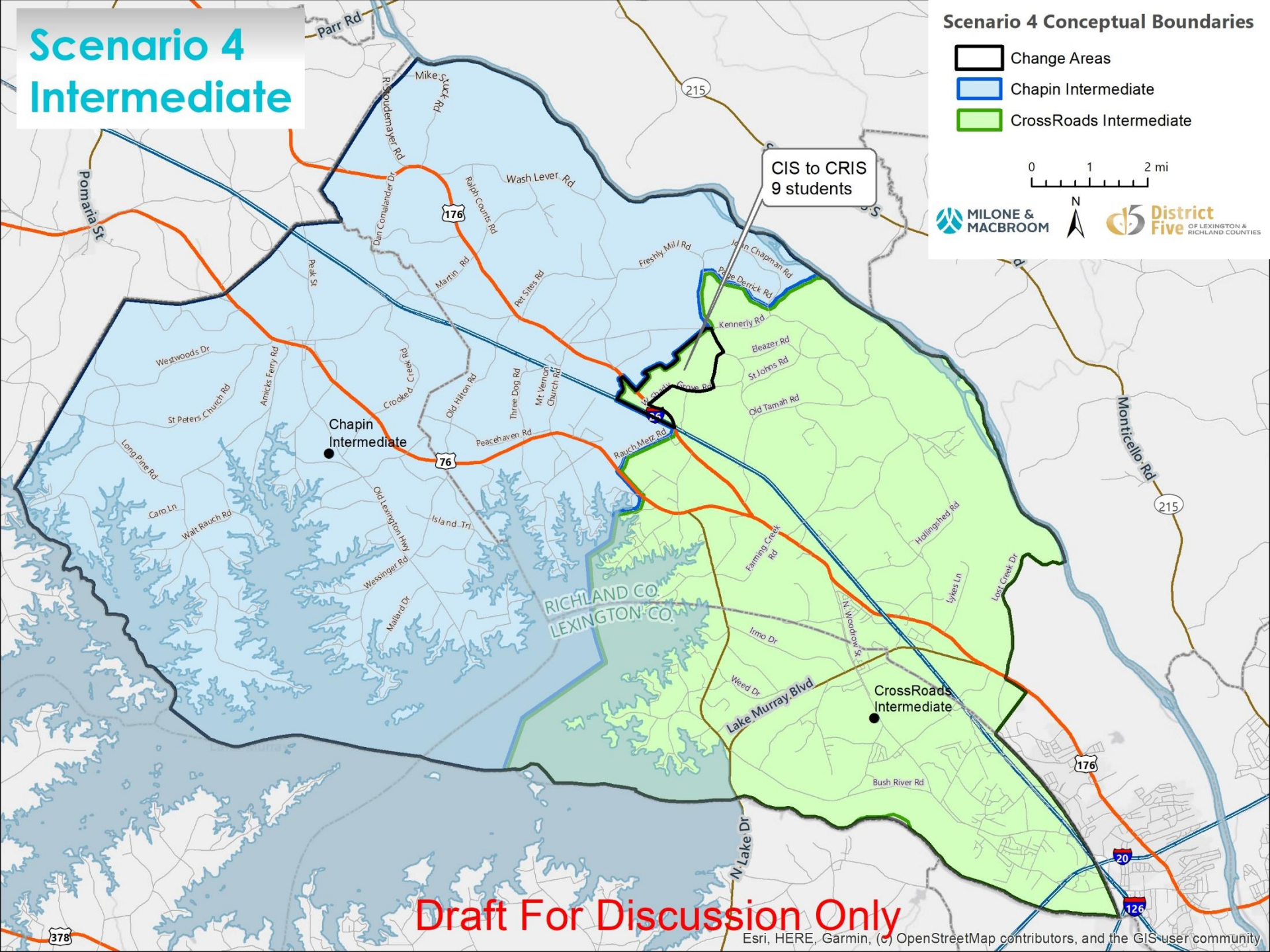
- **Balanced elementary enrollment.** No schools projected to experience overcrowding over the next ten years
- 5th grade added to PWES. Ensures efficient use of space in the Chapin Cluster without overloading CIS

Scenario 4 Intermediate

Scenario 4 Conceptual Boundaries

-  Change Areas
-  Chapin Intermediate
-  CrossRoads Intermediate

0 1 2 mi



Draft For Discussion Only

Esri, HERE, Garmin, (c) OpenStreetMap contributors, and the GIS user community

Scenario 4 Middle

Split feeder in LMES
and HECES attendance
zones

Scenario 4 Conceptual Boundaries

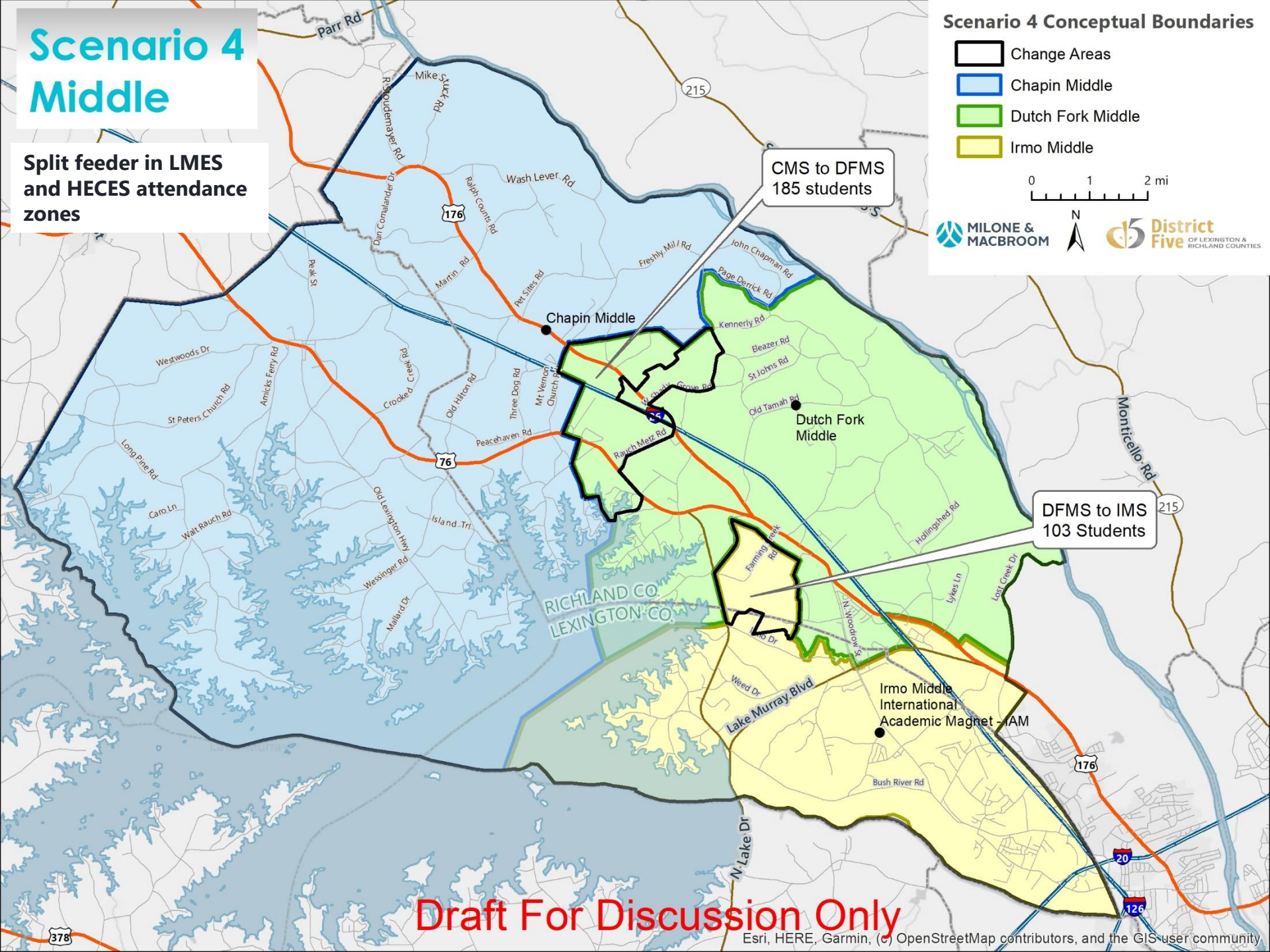
- Change Areas
- Chapin Middle
- Dutch Fork Middle
- Irmo Middle

0 1 2 mi

MILONE & MACBROOM



District
Five
OF LEXINGTON & RICHLAND COUNTIES



Draft For Discussion Only

Esri, HERE, Garmin, (c) OpenStreetMap contributors, and the GIS user community

Scenario 4 Projections: Intermediate/Middle

School	2020-21	2021-22	2022-23	2023-24	2024-25	2025-26	2026-27	2027-28	2028-29	2029-30	Enrollment Target
Chapin Intermediate (5-6)	712	779	795	834	883	883	893	870	847	847	1,018
Chapin Middle	803	761	774	843	868	905	959	964	969	946	1,200
CrossRoads Intermediate	800	795	773	782	721	714	772	739	727	698	1,098
Dutch Fork Middle	1,049	1,018	1,050	1,038	1,031	999	960	994	1,009	979	1,149
Irmo Middle International Academic Magnet - iAM	1,129	1,096	1,120	1,111	1,105	1,079	1,053	1,078	1,090	1,057	1,181

Source: MMI Medium Projections

1. Assumes current enrollment freeze students remain in current buildings

75%-85%

86%-100%

>100%

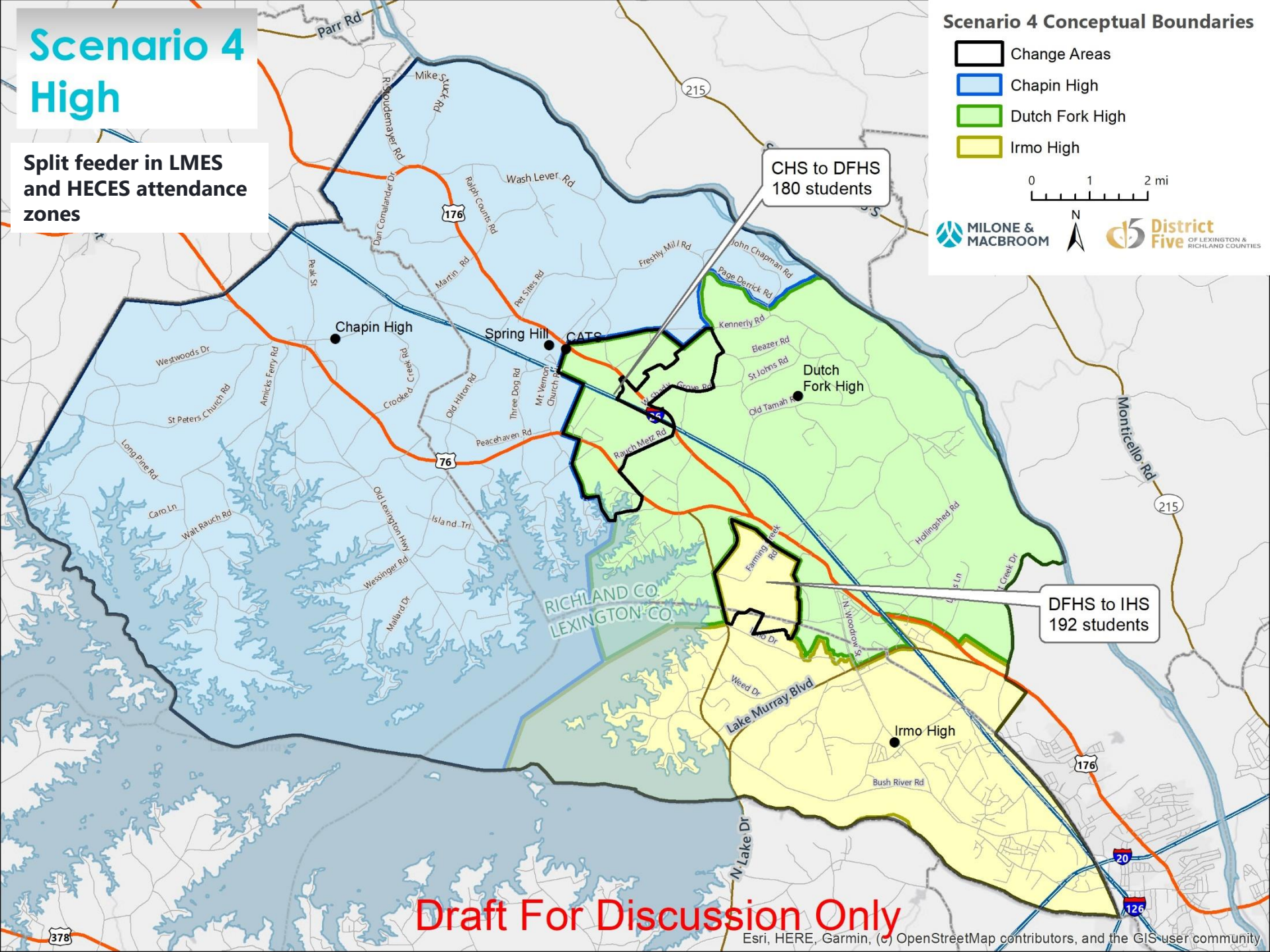
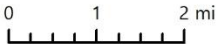
- Reduces overcrowding in Chapin Cluster
 - 5th grade at PWES relieves pressure on CIS
 - BES shifted entirely to Dutch Fork Cluster
- Split feeder pattern introduced in 7th grade. Ensures enrollment balance at the middle school level
 - LMES area split between CMS and DMS
 - HECES area split between DFMS and IMS
- **Achieves enrollment balance at the Middle School level.**

Scenario 4 High

Split feeder in LMES
and HECES attendance
zones

Scenario 4 Conceptual Boundaries

- Change Areas
- Chapin High
- Dutch Fork High
- Irmo High



Draft For Discussion Only

Scenario 4 Projections: High

School	2019-20	2020-21	2021-22	2022-23	2023-24	2024-25	2025-26	2026-27	2027-28	2028-29	2029-30	Enrollment Target
Chapin High	1,304	1,341	1,382	1,374	1,384	1,384	1,413	1,444	1,539	1,601	1,642	1,700
Dutch Fork High (including STEM program)	1,676	1,651	1,670	1,596	1,583	1,572	1,544	1,560	1,524	1,488	1,491	2,207
Irmo High International School of the Arts (includes IB)	1,447	1,546	1,667	1,733	1,771	1,796	1,763	1,777	1,744	1,710	1,714	2,141
Spring Hill High Career Pathways Magnet	1,109	1,099	1,122	1,120	1,124	1,130	1,122	1,137	1,140	1,137	1,149	1,700

Source: MMI Medium Projections

1. Assumes current enrollment freeze students remain in current buildings

75%-85%

86%-100%

>100%

- **Achieves enrollment balance at the High School level.** No schools projected to exceed enrollment target
- “Split feeder” continues
 - LMES area split between CHS and DFHS
 - HECES area split between DFHS and IHS
- Shifts ~180 students from CHS to DFHS and ~190 students from DFHS to IHS

Scenario 4: Performance Matrix

Evaluation Criteria	Scenario 4 Performance
Overcrowding in Chapin Cluster	<ul style="list-style-type: none"> Overcrowding addressed at all grade levels
Enrollment Balance	<ul style="list-style-type: none"> Enrollment balance achieved at elementary level All intermediate, middle, and high schools are balanced due to split feeder
Piney Woods Elementary	<ul style="list-style-type: none"> Created primarily from CES, with small area of LMES Addition of 5th Grade cohort results in efficient use of building
Geographic Proximity	<ul style="list-style-type: none"> Reasonable travel times maintained Some students in Chapin Cluster will have longer travel times CMS students who get shifted to DFMS will have longer travel times
Cluster Model and Feeder Pattern	<ul style="list-style-type: none"> Split feeder for middle and high school in LMES and HECES attendance areas Eliminates BES Split Feeder
Redistricting Impacts	<ul style="list-style-type: none"> Redistricts 13% of ES students, 7% of IS/MS students, and 7% of HS students Small peer groups associated with "pocket" redistricting

Findings and Takeaways

- **Scenario 2 and Scenario 4 best meet the Guiding Criteria**
 - Split Feeder Pattern enables enrollment balance across all grade levels
 - Phasing in of Split Feeder Pattern over time can minimize disruption to existing students
- **Scenario 1 and Scenario 3 fail to address overcrowding at the middle and high school level**
 - Scenario 1 does not address overcrowding at Chapin High School
 - Scenario 3 causes overcrowding at Dutch Fork Middle School