

Description	Orig Dur	Early Start	Early Finish	2009												2010												2011												2012												2013											
				M	A	M	J	J	A	S	O	N	D	J	F	M	A	M	J	J	A	S	O	N	D	J	F	M	A	M	J	J	A	S	O	N	D	J	F	M	A	M	J	J	A	S	O	N	D														
START CONSTRUCTION	0	28APR09 *		◆ START CONSTRUCTION																																																											
PHASE 1B	215	28APR09	30NOV09	■ PHASE 1B																																																											
PHASE 1A	53	06JUN09	31JUL09	■ PHASE 1A																																																											
PHASE 2	120	01DEC09	01APR10	■ PHASE 2																																																											
PHASE 3	120	02APR10	31JUL10	■ PHASE 3																																																											
PHASE 4	55	06JUN10	31JUL10	■ PHASE 4																																																											
CONSTRUCT ADD ALTERNATE #3	46	15JUN10	31JUL10	■ CONSTRUCT ADD ALTERNATE #3																																																											
				<p>Note: The Owner will require one week of move-in time to transition between phases.</p> <p>Note: The abatement activities for each phase will take one week.</p>																																																											

Start date	25JAN09
Finish date	31JUL10
Data date	25JAN09
Run date	08APR09
Page number	1A
© Primavera Systems, Inc.	

**PRE-BID MILESTONE SCHEDULE
CHAPIN ELEMENTARY SCHOOL**

- Early bar
- Progress bar
- Critical bar
- Summary bar
- ◆ Start milestone point
- ◆ Finish milestone point

ADDENDUM NUMBER FOUR

FOR

**DISTRICT FIVE OF
LEXINGTON & RICHLAND COUNTIES
CHAPIN ELEMENTARY SCHOOL**

PREPARED BY

**CALLOWAY JOHNSON MOORE WEST (CJMW)
201 WEST MAIN STREET
LEXINGTON, SOUTH CAROLINA 29072**

AND

**SOUTHERN MANAGEMENT GROUP
1213 LADY STREET, FOURTH FLOOR (29201)
POST OFFICE BOX 1785
COLUMBIA, SOUTH CAROLINA 29202**

DATE OF ISSUE: April 9, 2009

TO: ALL PRIME BIDDERS OF RECORD

This addendum modified the Contract Documents only in the manner and to the extent stated herein and shown on any accompanying drawings and will become a part of the Contract Documents. Except as specified or otherwise indicated by this addendum, all work shall be in accordance with the basic requirements of the Contract Documents.

BIDDER SHALL ACKNOWLEDGE RECEIPT OF ADDENDUM IN THE SPACE PROVIDED ON THE BID FORM. FAILURE TO DO SO MAY CONSTITUTE INFORMALITY IN THE BID.

Item 1: References Section 01110 Summary of Work

Modify 1.06 Time of Completion and Liquidated Damages item A to read:

The Contract Performance Period shall be as indicated in the Pre-Bid Milestone Schedule and commence upon written Notice to Proceed. The performance period shall be 459 calendar days from the date of the Notice to Proceed. Contractor shall comply with the phasing of the Pre-Bid Milestone Schedule unless given written approval by the Construction Manager to deviate from the specified phasing.

Item 2: References Section 01120 Scope of Work - Single Prime Contract

Modify General Conditions Allowance in 2.0.4 item A. to read:

\$200,000.00 - This allowance may be utilized during the course of construction to cover various Owner cost items. The allowance will only be utilized at the Owner's discretion and any portion of this allowance not utilized by the Owner will be refunded to the Owner via a deductive change order.

Item 3: References Section 01120 Scope of Work - Single Prime Contract

Modify Carpet/Floor Leveling Allowance in 2.0.4 item E. to read:

\$165,000.00 including South Carolina Sales Tax, delivery and installation. This allowance includes the removal of the existing carpet, installation of the new carpet, and installation of latex floor patch where required on existing concrete slabs. This allowance does not include floor protection. Floor protection will be the responsibility of the General Contractor. Installation of latex floor patch if required at new slabs will also be the responsibility of the General Contractor.

Item 4: References Section 01320 Progress Schedule

Remove and replace the Pre-Bid Milestone Schedule included at the end of this section with the attached Pre-Bid Milestone Schedule.

Item 5: References Section 01500 Temporary Facilities

Clarification to paragraph 3.3, item E:

As a clarification to this paragraph, one construction manager will occupy this office trailer. All of Item E remains in effect and unchanged.

Item 6: Sales Tax is to be included in all bids.

Item 7: CJMW Addendum Number Four consisting of 16 pages and 26 attachments.

End of Addendum No. 4

This Portion of Addendum No. 4 includes the following:

Clarifications and Changes to Specifications: **27 Items**

Clarifications and Changes to Drawings: **58 Items**

Conditional Approved Equals: (Not including Prior Approvals Listed on Electrical Drawings): **16 Manufacturers**

Attachments: **26**

ATTACHMENTS:

1.	BDC001	Civil – Portion of Drawing C2
2.	BDC002	Civil – Portion of Drawing C3
3.	BDC003	Civil - Modified Contours & Elevations (Drawing C4)
4.	BDC004	Civil - Modified Contours & Elevations (Drawing C5)
5.	BDC005	Civil – Portion of Drawing C5
6.	BDC006	Civil – Portion of Drawing C6
7.	BDC007	Civil - Drawing C9 – Slope Matting Detail
8.	BDC008	Civil - Drawing C8 Manhole Cover & Detail
9.	BDA001	Arch. - Kindergarten Storage Rooms – Plans / Elev.
10.	BDA002	Arch. - Floor Finish Plan – A112A & B107A
11.	BDA003	Arch. - Floor Finish Plan – B125A
12.	BDS001	Structural - Partial Roof Framing Plan
13.	BDS002	Structural – Skylight Details
14.	BDS003	Structural – Non-Load Bearing CMU Wall Bracing.
15.	BDM001	Mechanical – A Wing HVAC Partial Reno. Plan
16.	BDM002	Mechanical – B Wing HVAC Partial Reno. Plan
17.	BDM003	Mechanical – B Wing HVAC Partial Reno. Plan
18.	BDM004	Mechanical – Grille and Diffuser Schedule
19.	BDE001	Electrical – Sheet E1.0 – Partial Plan
20.	BDE002	Electrical – Sheet E1.1 – Partial Plan
21.	BDE003	Electrical – Sheet E2.0 – Partial Plan
22.	BDE004	Electrical – Sheet E2.1 – Partial Plan
23.	BDE005	Electrical – Sheet E2.4 – Partial Plan
24.	BDE006	Electrical – Sheet E1.3 – Partial Plan
25.	BDE007	Electrical – Sheet E2.3– Partial Plan
26.	BDE008	Electrical – Sheet E2.1 – Partial Plan

CLARIFICATIONS AND CHANGES TO SPECIFICATIONS:

- 1. Bid Form, Page 3, Unit Prices.**
Delete: "Patch existing floor slab as per Detail A601"
Replace with: "Patch existing floor slab as per Detail 4/A601."
- 2. Section 02231 Aggregate Base Course, 2.01.D**
Delete: "Crushed Stone Fill 4" in depth shall be placed under vapor barrier of slabs on grade. Stone shall be uniform 1", no fines, compacted as thoroughly as possible by tamping or rolling."
Replace With: "4" Sand shall be placed under vapor barrier of slabs on grade"

3. **Section 04810 – Unit Masonry Assemblies, 2.02.A:**
Delete: 2.02.A “Brick shall be “Old English, #502 modular and manufactured by Exum Company or Approved Equal”

Replace With: 2.02.A “Brick shall be “Old English, #502 modular as distributed by Exum Company or Approved Equal”
4. **Section 04810 – Unit Masonry Assemblies, 2.04.E**
Delete: Paragraph 2.04.3 Adjustable Multi-Wythe Joint Reinforcement
5. **Section 04810 – Unit Masonry Assemblies, 2.04.C**
Clarification: Mill galvanized reinforcement can be used at interior walls.
6. **Section 05120 – Structural Steel, 1.03 Quality Assurance:**
Add the following paragraph: “E. All steel shall be made in the United States”
7. **Section 05200 – Metal Joists, 1.03 Quality Assurance:**
Add the following paragraph: “G. All steel shall be made in the United States”
8. **Section 05810 Expansion Joint Cover Assemblies:**
Delete this section in entirety. There are no expansion joint cover assemblies in the scope.
9. **Section 07510 – Built-Up Bituminous Roofing:**
Delete: 2.06.B: “Polyisocyanurate Board Insulation: Rigid cellular foam, complying with ASTM C1289, Type I, aluminum foil both faces: non-reinforced foam core, and with the following characteristics:”

Replace with: 2.06.B “Polyisocyanurate Board Insulation: Rigid cellular foam, complying with ASTM C1289, Type II, Class I, Grade 2, with permanently bonded roofing felt facer sheets, with the following characteristics:”
10. **Section 08620 – Unit Skylights (Part of Addendum No. 1):**
Amend 2.02.B – Unit shall be double glazed with a clear inner glazing and a bronze outer glazing.
11. **Section 09670 Epoxy Resin Liquid Composition Flooring (part of Addendum 1**
Delete: 1.02.B “Kitchen and Serving Area floor and base”.

Replace With: 1.02.B – “Patching in existing serving areas and toilet rooms where terrazzo floor is removed”.
12. **Section 09670 Epoxy Resin Liquid Composition Flooring (part of Addendum 1)**
Delete: 2.04 “Chemical Resistant Flooring (Chem-Rez “N”)”.
There is no epoxy resin floor under cooking areas.

13. **Section 09670 Epoxy Resin Liquid Composition Flooring (part of Addendum 1)**
2.05 Manufactures – Clarification – Key Resin Co. shall be an approved manufacturer for epoxy resin liquid flooring for toilet rooms under 2.01.
14. **Section 10100– Visual Display Boards, 2.04 Accessories:**
Add: The following paragraph: "H. Display Rails: (Designated "Gripper Strip" on drawings) Shall be aluminum roller catch system equal to Advantus Grip-A-Strip – 1-1/2" by length indicated on drawings, satin finished aluminum.
15. **Section 15500 AUTOMATIC TEMPERATURE CONTROLS, add paragraph 1.04 to read:**
- 1.04 As part of this project, the existing Novar Executive Processor (EP/2) shall be upgraded to a Novar Lingo Processor. All existing floor level controllers shall remain as is, and shall connect to the new Lingo Executive Module Processor Panel. New heat pump controllers shall be installed for each new HVAC unit added, and connected to the existing building control system network.
16. **Section 15500 AUTOMATIC TEMPERATURE CONTROLS, modify paragraph 2.04 to read:**
- 2.04 EXECUTIVE PROCESSOR (EP2) - MODIFICATIONS TO EXISTING
- A. Executive Modules shall have a minimum 80486 microprocessor or equivalent. They shall be multi-tasking, multi-user, real-time digital control processors. Controller size shall be sufficient to fully meet the requirements of this specification. They shall be of two-piece design to allow wiring of terminals without the electronics being present. This design shall also allow replacement of the operational electronics without the need to unwire any connection on the controller.
- B. Each Executive Module shall have a minimum of 16 megabyte RAM and 8 megabyte flash RAM. Memory shall be upgradeable as required to support its own operating system and databases, including:
1. Control processes
 2. Energy management applications
 3. Alarm management applications for each point in the system.
 4. Historical/trend data for points specified
 5. Maintenance support applications
 6. Custom processes
 7. Operator I/O.
 8. Dial-up communications
 9. Manual override monitoring

- C. Executive Modules shall provide the minimum of the following integral communications options, provided by the DDC manufacturer, without the need for external devices. The connection of external third party devices will not be acceptable.
1. One RS-232C serial data communication port for operation of operator I/O devices such as laptop portable operator's terminals. Executive Modules shall allow temporary use of portable devices without interrupting the normal operation of permanently connected modems, printers or terminals.
 2. A standard or optional RJ-11 jack for connection to the optional internal 56K auto baud modem to be used as a dial-up access port for monitoring, program changes, automatic transfer of alarms and historical data. It shall also be used for automatic dial out of alarms to remote workstations.
 3. One RJ-45 Ethernet port to be connected to the peer-to-peer Ethernet network.
 4. Up to four RS-485 ports to be used as a LAN to Universal Input/Output Controllers and Application Specific Controllers. Each communication port shall support up to 32 of these controllers.
 5. The Executive Module shall have an optional internal touch screen which will allow the operator to query, troubleshoot and modify set points and schedules within the system without using one of the before mentioned communications ports. Other similar remote touch screens shall be connected to the Ethernet LAN as required on the drawings as convenient query stations.
- D. Each Executive Module shall support up to 128 Universal Input/Output Controllers, Application Specific Controllers, 128 inputs or 128 outputs.
- E. Each Executive Module shall be capable of providing connection for inputs and outputs, which are global information used by all controllers on its LAN, and these shall not count toward the maximum allowable inputs and outputs on the system. These include:
1. Outside Air Temperature
 2. Outside Light Level
 3. Electrical Demand Pulse Input
 4. Phase Loss Input
 5. Emergency Status Input
 6. System Fault Output
- F. Each Executive Module shall continuously perform self-diagnostics, communication diagnostics and diagnostics of all connected Universal Input/Output Controllers and Application Specific Controllers. The Executive Module shall provide both local and remote annunciation of any detected problems.
- G. In the event of the loss of normal power, there shall be an orderly shutdown of all Executive Modules to prevent the loss of database or operating system software. Programs shall be protected by storage in

Flash RAM. There shall also be a backup power source sufficient capacity to call out and report the power loss situation to the assigned operator workstations.

1. Upon restoration of normal power, the Executive Module shall automatically resume full operation without manual intervention. Controllers which require manual intervention to resume normal control shall not be acceptable.
2. Should Executive Module memory be lost for any reason, the user shall have the capability of reloading the Executive Module via the local RS-232C port, via telephone line dial-in or from an ethernet network workstation PC.

H. All points associated with a given mechanical system (i.e., an air handling unit) will be controlled from a single Executive Module. No points from a given mechanical system may be distributed among Executive Modules.

17. Section 15500 AUTOMATIC TEMPERATURE CONTROLS, modify paragraph 2.05 to read:

2.05 New Heat Pump Controllers

- A. As a minimum, shall support the following types of applications for heat pump unit control:
 1. Heat Pump, air-to-air source
 2. Heat Pump with ventilation air
 3. Heat Pump with auxiliary heat
- B. All Heat Pump control applications shall be field-selectable such that a single controller may be used in conjunction with any of the above types of heat pump units to perform the specified sequences of control.
- C. Design:
 1. Two-part construction:
 - a. Integral electronics and mounting plate
 - b. Removable wiring terminals
 2. Network communications:
 - a. EIA Standard RS-485 9600bps, serial, two-wire differential, low parity bus using cyclic redundancy checking (CRC) for error detection.
 - b. Network communication maximum cable lengths of 8,000 feet.
 3. Module microprocessor and memory:
 - a. 80C51 microprocessor; 2Kb RAM, 32Kb ROM
 - b. Fail safe program setpoint stored in non-volatile PROM
 4. Operating environment -40EF to 158EF and 0% to 99%RH (noncondensing)
 5. Inputs:
 - a. Space Temperature
 - b. Supply Air Temperature
 - c. Override Input

- d. Setpoint Adjust
- e. Supply Fan Status
- f. General Heat Pump Fault
- g. Compressor Status

- D. The Heat Pump controllers shall be powered from a 24 VAC. The DDC Contractor shall provide a separate isolation transformer for each controller. Each controller shall be manufactured with an integral cover to protect the intelligence board assembly.
- E. The Heat Pump controller shall interface to a matching room temperature sensor as previously specified. The controller shall function to maintain space temperature to within $\pm 0.5^{\circ}\text{F}$ of setpoint at the room sensor location.
- F. The Heat Pump controller shall directly switch the reversing valves on a call for heat or cool, whichever is appropriate.
- G. The Heat Pump Controller shall as a minimum incorporate on its menu of software settings and setpoints the following to maximize flexibility, minimize energy consumption, and protect the unitary equipment. Systems that require knowledge of any type of programming language are not acceptable:
 - 1. Separate heating and cooling temperature setpoints for both occupied and unoccupied periods.
 - 2. Operator definable minimum discharge air temperature setpoints for both heating and cooling modes.
 - 3. Definable outside air temperature lockout setpoints for heating, cooling and outside air dampers.
 - 4. The ability to limit or disable the occupant setpoint adjustment at the sensor.
 - 5. A morning warmup mode to shall be incorporated to force the outside air damper closed during transition from unoccupied to occupied eliminate conditioning outside air during this period. This mode shall also have a user defined Warmup Timeout feature which will allow each Heat Pump Controller to operate in this mode for a specified period of time, or terminate Morning Warmup utilizing a temperature deviation from setpoint by a user-defined amount of $0-7^{\circ}\text{F}$
 - 6. During an electrical demand situation, the Heat Pump Controller shall incorporate separate control algorithms for heating and cooling which will allow it to modify the operation of the heat pump such that it can respond in the following manner:
 - a. Do nothing if energy cannot be conserved because of control mode.
 - b. Shift the temperature setpoint a user-defined range of $0-9^{\circ}\text{F}$
 - c. Operate the fan in a continuous mode to circulate air without conditioning it to reduce warm or cool areas during the setpoint adjust time.
 - d. Turn the heat pump off for a specified period of time.
 - 7. Optimum start/stop shall be a standard feature which will allow

the Heat Pump Controller to decide when to go to occupied mode based on zone thermal characteristics and historical recovery statistics.

8. Forcing of outputs to emergency states should a system emergency occur. (i.e. smoke alarm)
 9. Ability to define whether heating and cooling outputs operate in a direct acting or reverse acting manner.
 10. Activate emergency shutdown of three-phase units during a phase loss situation.
 11. Should the Heat Pump Controller sense the zone sensor has failed, allow the user to define a control mode (off, heat, cool) and force any modulating outputs to a specific position.
 12. Incorporate a fail safe mode should the fan proving switch open during operation to protect compressors and other sensitive parts of the unitary system.
 13. A user-definable timed override period of 0-4 hours shall be incorporated to limit the amount of override time an occupant can force the unitary equipment during unoccupied hours.
 14. A selection shall be available to limit the discharge temperature to a maximum user-defined setpoint during heat operation to eliminate overheating of space.
 15. Utilization of ASHRAE Cycle 2 to keep the outside air damper closed during unoccupied times to eliminate conditioning of outside air when the zone is unoccupied.
18. **Refer to section 15500 AUTOMATIC TEMPERATURE CONTROLS,**
Delete paragraph 2.06.
19. **Section 15600, paragraph 2.9:**
Identification of plumbing systems as specified applies to work in renovated areas and additions only. (Exist piping to remain undisturbed)
20. **Section 15600, paragraphs 3.5 and 3.6:**
Videotaping and smoke testing as specified applies to work in Area "E" only.
21. **Section 15600, paragraph 3.7.B:**
Delete reference to Hosebibbs.
22. **Section 15650, paragraph 2.2N:**
P8 Junior Wall Hung Lavatory does not require insulation kit.
23. **Section 15650, paragraph 2.2N:**
P9 Kitchen Hand Sink mounting height shall be 31".
24. **Section 16050:**
1. Add paragraph 1.3 c. All work shall comply with latest issue of SC OSF guidelines. See (link) ed.sc.gov/agency/Innovation-and-support/facilities/old/sf/documents.
 2. Add paragraph 3.1 B. On Civil plan C2 there is a notation that a pump and septic tank shall be removed. Provide the demolition of this electrical circuit coordinated with the General Contractor.

25. **Section 16120:**
1. Paragraph 3.1 B. Delete the second sentence in its entirety. In its place add: Remove voice or data cables that previously fed devices in removed walls. These cables shall be demolished entirely. Any communications cables that remain shall be bundled at intervals not exceeding 10' and shall be coiled above the ceiling out of the way of new work. They shall be supported at intervals not exceeding 3' from structure not by ceiling, not by ceiling supports, not by other work.
26. **Section 16130:**
1. In paragraph 3.3 V. Delete "Whip lengths shall be minimized. Standard premanufactured whips shall not be coiled when fixture to box spacing is significantly less than standard whip length. Whips shall be shortened in those applications where they are visible to maintain a neat and organized appearance." Add in its place "Only whips not longer than six feet made by the fixture manufacturer shall be used."
 2. Add paragraph 2.8 A. Telepower poles shall be Wiremold AMTC-412 series or equal.
27. **Section 16851:**
1. Delete paragraph 2.3 A 3 b. Piezo sounder.
 2. Add to paragraph 3.1 D. Existing Duct Detectors. Corridor test station locations shall be assumed to map directly to existing duct detectors in the general area of those test stations.
 3. In paragraph 2.1 A 1 add: f. Johnson Controls.

CLARIFICATIONS AND CHANGES TO DRAWINGS:

1. **Drawing Sheet CS3 – Life Safety Plan**
Clarification to Fire Extinguishers: There is one new bracket mounted fire extinguisher in the existing building in Science Lab A130. All others indicated in existing building are existing. All fire extinguishers and cabinets indicated in new Kindergarten Addition are new.
2. **Drawing Sheet CS4 – Notes 1/CS4 – Site Phasing Plan:**
Add Alternate #3 – The connector road and Kindergarten Drop Off is to be amended to be removed from Phase 1b. This work will now occur between June 15, 2010, and July 31 2010. Coordinate with Milestone Schedule in Specification Section 01320.
3. **Drawing Sheet CS4 – Notes under Phase 1A.**
Delete: "No students allowed in building during Phase 1A"
Replace with: "No students or teachers allowed in building during Phase 1A".

4. **Drawing Sheet CS4 – Notes under Phase 4.**
Delete: "No students allowed in building during Phase 4"
Replace with: "No students or teachers allowed in building during Phase 4".
5. **Drawing Sheets C1, C2, C3, C4, and C5:** Change parking lot label "Facility Parking" to be "Faculty Parking."
6. **Drawing Sheet C2 – Demolition Plan:**
Add the following note: "All existing playground equipment shall be removed/relocated by Owner".
7. **Drawing Sheet C2:**
Change the asphalt and curb and gutter to be removed in the north end of the "Faculty Parking", delete the removal and relocation of fence from the Ball Field, and delete the notes and hatching calling for removal of the batting cage, sidewalks, trees, and light pole as shown in the attached 8 ½ x 11 copy of a portion of the drawing. Add the removal of a portion of sidewalk as shown. (See Attached Sketch BDC001)
8. **Drawing Sheet C3:**
Change the "CES to CMS Road" from Station 0+00 to Station 6+91.89 to be as shown in the attached 8 ½ x 11 copy of a portion of the drawing. Take note of the station equality so that Station 4+70 of the new alignment equals Station 6+91.89 of the original alignment. (See Attached Sketch BDC002)
9. **Drawing Sheets C4 & C5:**
Modify the proposed contours between the side of the proposed Kindergarten Building and the existing building and add the spot elevation as shown on the attached Sketches BDC003 and BDC004.
10. **Drawing Sheets C4, C5, and C6:**
Add the following note: "On slopes higher than 8' place North American Green S-75 matting or equal (See Details)."
11. **Drawing C5:**
Change the "CES to CMS Road" from Station 0+00 to Station 6+91.89 to be as shown in the attached 8 ½ x 11 copy of a portion of the drawing. (See Attached Sketch BDC005)
12. **Drawing C6:**
Change the "CES to CMS Road Profile" from Station 0+00 to Station 6+91.89 to be as shown in the attached 8 ½ x 11 copy of a portion of the drawing. Take note of the station equality given as "Tie Equality Station 4+70 Back = Station 6+91.89 Ahead. Contractor shall use the attached profile from Station 0+00 to Station 4+70 and the original profile from Station 6+91.89 to the end of the road. (See Attached Sketch BDC006)

13. **Drawing C6:**
In the "Loop Road Profile" change the indicated 42" RCP cross drainage pipe to be 48" RCP with the same invert elevation.
14. **Drawings C7:**
Change the pavement section of the "Pavement Section without Curb and Gutter on the CES to CMS Road" to be 18" Compacted Subgrade @ 98% Standard Proctor Maximum Dry Density, Minimum
15. **Drawing Sheet C8:**
Change the catch basin and junction box manhole frame and cover detail to be USF 1162 or equal as shown on the (see attached Sketch BDC008).
16. **Drawing Sheet C9:**
Add the detail for installation of matting on slopes as shown in the (see attached Sketch BDC007).
17. **Drawing Sheets D101, D102:**
Clarification: General contractor is responsible for removing and disposing of existing demountable partitions unless Owner wants them (first right of refusal similar to equipment note).
18. **Drawing Sheet A201: 1/8" Floor Plan "A Wing"**
New opening in existing masonry wall between rooms A125A and A125B shall be 8'-0" wide by 6'-8" high.
19. **Drawing Sheet A206: Kindergarten Addition:**
For clarification on the three exterior walls of Kindergarten Storage Rooms E104, E110, E114, E118, E120, E126, and E132, and exterior walls of Kindergarten Storage Room E128 Add attached Enlarged Plan – Typical Kindergarten Stg. Room - See (Attachment BDA001).
20. **Drawing Sheet A207 - Alternates**
Clarification: Alternates 4 and 5, 4/A207 and 5/A207 include the covered walkway and the hatched concrete sidewalk under the covered walkway. The non-hatched concrete under the building entrance is in the base bid.
21. **Drawing Sheet A301 – Finish Schedule:**
Amend Finish Schedule so the following rooms receive Epoxy Resin Liquid Composition Flooring as added in Addendum 1. Custodian E123.
22. **Drawing Sheet A301 – Finish Schedule:**
Amend Finish Schedule – Rooms A121A, A122A, A123A, and A144 – Floors in these areas to be "1" – (New carpet from allowance) in lieu of "2" (Existing carpet with new borders) Delete "R" (existing to remain) The existing carpet in these areas is to be removed and replaced per detail 5/A302 as part of Add Alternate #1.

23. **Drawing Sheet A301 – Finish Schedule:**
Amend Rooms C109 Unisex Toilet and D118 – Serving. There is no terrazzo patching in the project. The entire floor of Room C109 shall receive Epoxy Resin Liquid Flooring after the trench is patched per plans. Trenching patches in Serving D118 shall be receive Epoxy Resin Liquid Flooring – color to match surrounding terrazzo.
24. **Drawing Sheet A302 – Floor Finish Pattern Plan:**
Add the two enlarged plans to this sheet as attached on BDA002, and BDA003.
25. **Drawing A401 – Enlarged Plans and Interior Elevations, 17/A401.**
Typical Large Scale Plan 17/A401: Amend Toilet Accessory numbers TA2 near lavatories to be TA4. These are paper towel holders, not toilet tissue dispensers.
26. **Drawing Sheet A501: Exterior Elevations:**
For clarification on the three exterior walls of Kindergarten Storage Rooms E104, E110, E114, E118, E120, E126, E132, and E128- Add Typical Kindergarten Storage Room Elevations (Attachment BDA001).
27. **Drawing Sheet A601 – Wall Sections – Existing Building, Detail 2/A6.01**
All interior walls in Areas A, B, and C per detail 2/A6.01 shall include sound insulation between studs vertically to top of gyp. board per specification section 09260 2.04.A Acoustical Insulation. Sound attenuation batts over the top of walls shall also be per specification section 09260 2.04 A.
28. **Drawing Sheet A601 – Wall Sections – Detail 4/A601:**
Amend the note "Drill holes at 16" O.C....."
To the following: "Drill holes at 18" O.C...."

Add the following note: "Dowels shall be 12" long, 5/8" diameter smooth steel".
29. **Drawing Sheet A601 – Wall Sections:**
Amend the detail numbering as follows:

Detail - Areas A and B Blown Up Section at Roof Edge Interior Courtyard shall be amended from 3/A601 to 1a/A601.

Detail – Areas A and B Typical Skylight Detail – Perp. To Joists shall be amended from Detail 4/601 to 3a/A601.
30. **Drawing Sheet A803 Details 8,9,10, 12.**
Amend Note "4" Square Steel Tube Columns, See Structural" to "Round Steel Columns – See Structural"
31. **Drawing Sheet S201:**
See Revised Roof Framing Plan on attached Sketch BDS001.

32. **Drawing Sheet S401:**
See the Skylight Framing Detail on **attached Sketch BDS002.**
33. **Drawing Sheet S401:**
See the Skylight Non Bearing CMU Wall Bracing Detail on **attached Sketch BDS003.**
34. **Drawing Sheet SP2:**
Refer to Arch drg, sht A201 for skylights being added in rooms A112A, B114A and B125A. Contractor shall provide horiz sidewall head for coverage at skylights as required. Piping to sidewall head shall rise concealed in stud furring with reducing 90 at top of rise. Coordinate with general contractor as required. (See skylight details sht A601)
35. **Drawing Sheet P3:**
Coordinate routing of 2" vent piping to Toilet A129 to prevent conflicts with exist gyp board ceilings. (Refer to Arch drgs, sht A208 as required)
36. **Drawing Sheet P7:**
Refer to Civil drgs, sht C4 and provide connection to 6" sanitary stub approx where indicated.

Refer to Civil drgs, sht C4 and provide connection to 2"cw service approx where indicated. (Valve in box provided by others)
37. **Drawing Sheet Sht P8:**
Refer to Partial Plbg Plan A - Water Piping: Coordinate location of 3/4"H&CW piping with roof access hatch in Cust E127 as required to prevent conflicts.
38. **Plumbing Drawings - General:**
Removal, storage and reinstallation of ceiling tiles shall be by the general contractor. Coordinate with G.C. at all renovated areas. (Refer to Arch drgs, sht A208 as required)
39. **Drawings M1, M2, M3, and M4; DEMOLITION NOTES,** all demolition work noted in M1 through M4 shall be performed under a separate contract by the Owner's asbestos abatement contractor.
40. **Drawing Sheet M5:**
(See attached sketch **BDM001**) for revisions to duct sizes, diffusers sizes, and grille/diffuser air flows associated with rooftop unit ERTU-2.
41. **Drawing Sheet M6:**
(See attached sketch **BDM002**) for revisions to duct sizes, diffusers sizes, and grille/diffuser air flows associated with rooftop unit ERTU-10.
42. **Drawing Sheet M6:**
(See attached sketch **BDM003**) for revisions to duct sizes, diffusers sizes, and grille/diffuser air flows associated with rooftop unit ERTU-13.

43. **Drawing Sheet M11:**
 (See attached sketch BDM004) for the GRILLE AND DIFFUSER SCHEDULE.

44. **Drawing Sheet E0.1**

1. Symbol legend – Symbols for security cameras and occupancy sensors: Provide a junction box, weatherproof if outdoors, with blank cover and a ¾" raceway to the data room. Devices and wiring shall be provided by owner under a separate contract.
2. Symbol legend – Junction box symbols for communication station: Boxes shall have 1" EMT to cable tray in new building and to corridor in existing building. Owner shall provide cable tray in existing building under separate contract with a communications wiring provider.

Lighting Fixture prior approvals:

Designation	Manufacturer	Description
GTD	Chloride Systems	APTC
GTD	Iota	ETS
A	Day-Brite	2GT8232-21-277-1/2-EB
A	Cooper	2GR8-232A125-UNV-EB81-U
AE	Day-Brite	2GT8232-21-277-1/2-EB-GTD/ETS/APTC
AE	Cooper	2GR8-232A125-UNV-EB81-LTC2-U
B	Day-Brite	2GT8332-21-277-1/21-EB
B	Cooper	2GR8-332A125-UNV-EB82-U
BE	Day-Brite	2GT8332-21-277-1/21-EB -GTD/ETS/APTC
BE	Cooper	2GR8-332A125-UNV-EB82-LTC2-U
C	Day-Brite	CAN232-UNV-1/2-EB
C	Cooper	WS-232A-UNV-EB81-U
D	Day-Brite	2TG8432-21-277-2/2-EB
D	Cooper	GR8-432A125-UNV-EB82-U
F	Day-Brite	2TG8217-21-277-1/2-EB
F	Cooper	2GR8-217A125-UNV-EB81-U
G	Eclipse-Lighting	TU-FT-TTT(2)42-EBU-9221-PNA-GTD/ETS/APTC
G	Cooper	CFIP-C-84-E-PE-CM
H	Day-Brite	T232-UNV-1/2-EB-CG-4
H	Cooper	WG/SS-4FT-B
J	NewStar	NLS2 T8 (2) 17 EBU EB XTL
J	Luminaire	VPF82-217-ELECT-277-CP-WHT
K	NewStar	NLS4 T8 (2) 32 EBU EB XTL
K	Luminaire	VPF84-232-ELECT-277-CP-WHT
KE	NewStar	NLS4 T8 (2) 32 EBU EB XTL GEN-BACKED CIRCUIT
KE	Luminaire	VPF84-232-ELECT-277-CP-WHT-GTD
OA	U.S. Architectural Lighting	-SVL22-ASY-400PSMH-480-1-DBM
OA	Cooper	GSM-AM-400-MP-3V-SG-BZ-MA1208- BZ
OA POLE	United Lighting Standards	- RTS-30-6511-DRILLED FOR (1) EPA 3.20-DARK BRONZE FINISH TO MATCH FIXTURE
OA POLE	Valmont	DS210-660A300-PL-D1-DB
X	Chloride Systems	ERA
X	Cooper	AP70R

Occupancy Sensor - Hubbell Building Automation – OMNIDT2000
 Power Packs - Hubbell Building Automation - UVPP

45. **Drawing Sheet E0.2:**

1. Detail 1. Single Line Diagram Kitchen Addition. TVSS units shall be 80 KA minimum, Liebert Accuvar II or equal.

46. **Drawing Sheet E1.0:**
 1. (See sketch BDE001).

47. **Drawing Sheet E1.1:**
 1. (See sketch BDE002).

48. **Drawing Sheet E1.2:**
 1. In the existing auditorium a fire alarm system AV unit shall be removed for replacement with a higher candela synchronized model. The existing AV unit is approximately centered on the "plan North" wall in this room.
 2. In the ceiling above room C119 sick bay. Disconnect heat unit per note 6. See sheet M3 or sheet E2.2 for C119.
 3. In the ceiling above supply room C116. Disconnect heat unit per note 6. See sheet M3 or sheet E2.2 for C116.
 4. In the ceiling above the toilet adjacent to the item 3 room above disconnect a heat unit per note 6.
 5. In the ceiling above mail room C115a. Disconnect heat unit per note 6. See sheet M3 or sheet E2.2 for C115a.
 6. In the ceiling above lounge C115b. Disconnect heat unit per note 6. See sheet M3 or sheet E2.2 for C115b.
 7. In the ceiling above office C104. Disconnect heat unit per note 6. See sheet M3 or sheet E2.2 for C104.
 8. In the ceiling above conference room C106. Disconnect 2 heats unit per note 6. See sheet M3 or sheet E2.2 for C106.
 9. In the ceiling above office C112. Disconnect heat unit per note 6. See sheet M3 or sheet E2.2 for C112.
 10. In the ceiling above toilet C111. Disconnect heat unit per note 6. See sheet M3 or sheet E2.2 for C111.

49. **Drawing Sheet E1.3:**
 1. (See sketch BDE006).

50. **Drawing Sheet E2.0:**
 1. (See sketch BDE003).

51. **Drawing Sheet E2.1:**
 1. (See sketch BDE004).
 2. (See sketch BDE008).

52. **Drawing Sheet E2.3:**
 1. (See sketch BDE007).

53. **Drawing Sheet E2.4:**
 1. (See sketch BDE005).

54. **Drawing Sheet E3.0:**
 1. Provide a smoke detector in room A135.

2. Provide a smoke detector in A119b.

55. Drawing Sheet E3.1:

1. In corridor B129 add a 15 candela visual unit. Coordinate device locations in this hall with Engineer.
2. Provide a smoke detector in B119c.

56. Drawing Sheet E3.2:

1. Provide a 15 candela visual unit in C156.
2. Provide a 15 candela visual unit in C152.
3. Provide a 95 candela audio/visual unit in C146 at the location where the indicating device was removed in the demolition phase.
4. Provide a 15 candela visual unit in C139 near corridor C108.
5. Provide a 15 candela visual unit in C123a near corridor C121.
6. Provide a 15 candela visual unit in C103 near entry C124a.
7. Provide a 15 candela Audio/visual unit above the manual pull at the door at the intersection of C108/C105.
8. Provide a 15 candela Audio/visual unit above the manual pull at the door in C105 near C101.
9. Provide the visual device in C105 approx. half way between the two AV devices listed above.
10. Provide a smoke detector in C133.
11. Provide a smoke detector in C137.
12. Provide a smoke detector in C136.

57. Drawing Sheet - E3.3: Main Electrical Room D127

1. At the main switchboard replace the existing grounding electrode conductor with a 3/0 copper conductor.
2. On the ground bar of the main switchboard there is an existing lug which lands a copper conductor and an aluminum conductor. Terminate those two conductors under separate lugs. Use lugs that are rated for the conductor material in each case.
3. Close opening in top of main switchboard.
4. Provide 4" sq. junction box cover on open existing box between transformer and transfer switch.
5. In the corridor between kitchen D117 and Dock D126 provide a 15 candela A/V unit.
6. In corridor D106 provide a third visual unit. This hall shall have a unit within 15' of each end and one in the middle.

58. Drawing Sheet E3.4:

1. Provide a 15 candela visual unit wall mounted above the pull station in E101 near E103.
2. Provide a 15 candela visual unit wall mounted near the middle of corridor E102.
3. Provide a 15 candela visual unit near the plan north end of E102.
4. Provide a fire alarm system remote annunciator near the plan north end of E102.

CONDITIONAL APPROVED EQUALS: Provided all requirements of the specifications and drawings are met, add the following manufacturers and products to those approved for use on this project.

04810 Unit Masonry Assemblies, 2.0.6.A Cavity Mortar Control:

1. Mortar Net – Irmo, SC 29063 (803-732-1765)

Section 07260 Weather Barriers:

1. W.R. Meadows Permintor – Cartersville, GA 30120 (770-386-6440)
2. Viper Vaporcheck 10 mil - from Insulation Solutions, Inc. – East Peoria, Illinois 61611 (309-698-0062)

Section 09850 Acoustical Panels:

1. Sound Concepts Inc. H.I.R Panels - (204-783-6297)

Section 10100 Visual Display Boards:

1. American Visual Display Products, LLC. – Pompano Beach, FL 33064 (954-972-4144)

Section 12353 Science Casework:

1. Southside Manufacturing Corp., Distributed by School Equipment, Inc. - Irmo, SC 29063 (803-781-5790)
2. Cabinets by Design – Duluth, GA 30096 (770-926-0250)

Section 10730 Aluminum Walkway Covers:

1. Mitchell Metals – Smyrna, GA 30080 (770-431-7300)
2. East Coast TVM, LLC – (843-346-3885)

Section 15600

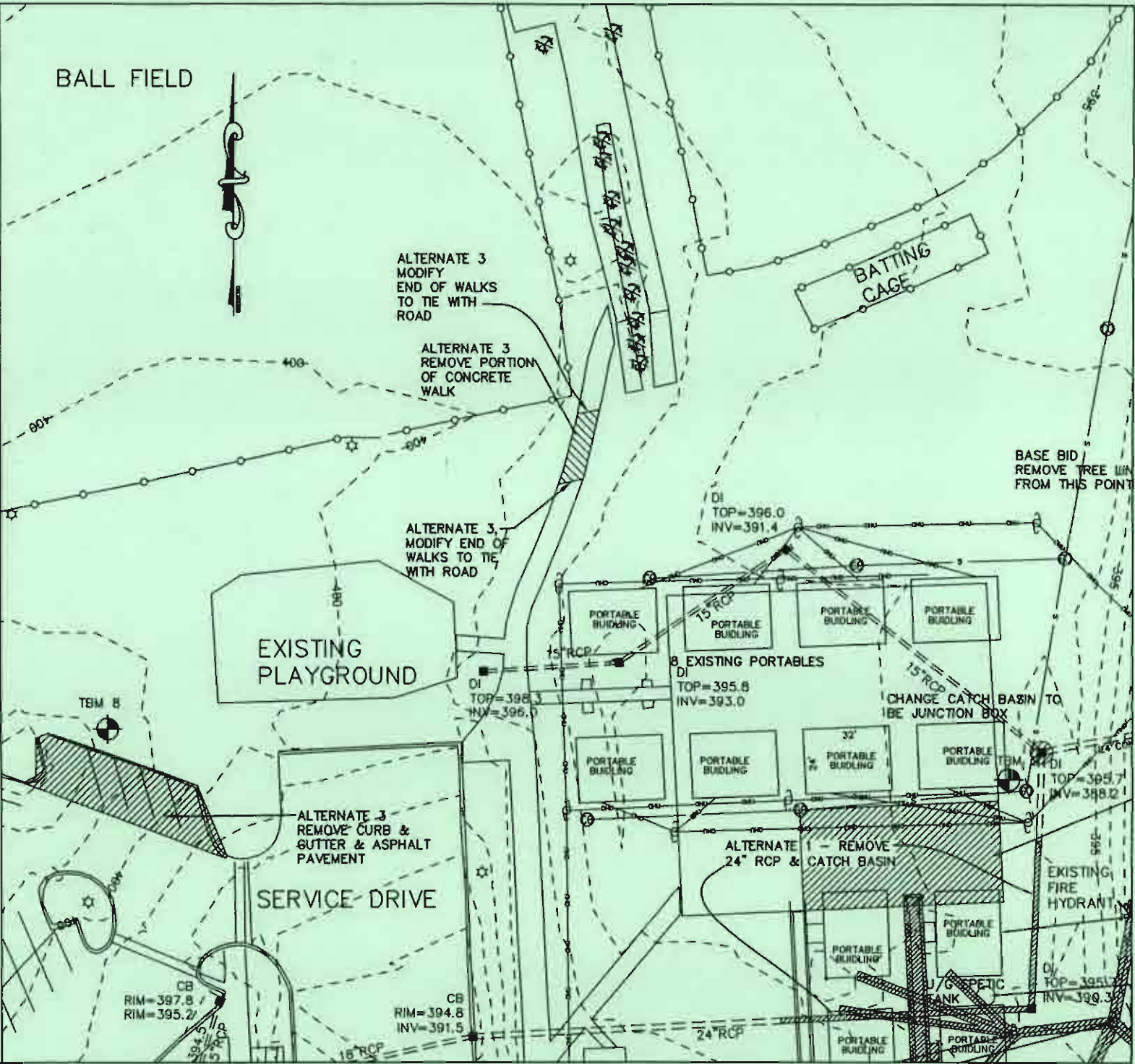
Expansion Tanks

Bell and Gossett

HVAC:

<u>Item</u>	<u>Specified Manufacturer</u>	<u>Prior Approved Equal</u>
Air Distribution	Price	Nailor Industries
Fire Dampers	Ruskin	Nailor Industries, Leader Industries
Control Dampers	Ruskin	Nailor Industries, Leader Industries
Balancing Dampers	Ruskin	Nailor Industries, Leader Industries
Fans	Cook	Breidert
Ductless Split System Heat Pump	Mitsubishi	Daikin

END OF ADDENDUM 4



PORTION OF
DRAWING C2



BDC001

Scale: 1"=50'

Job #: 07-5020

Date: 04/09/09

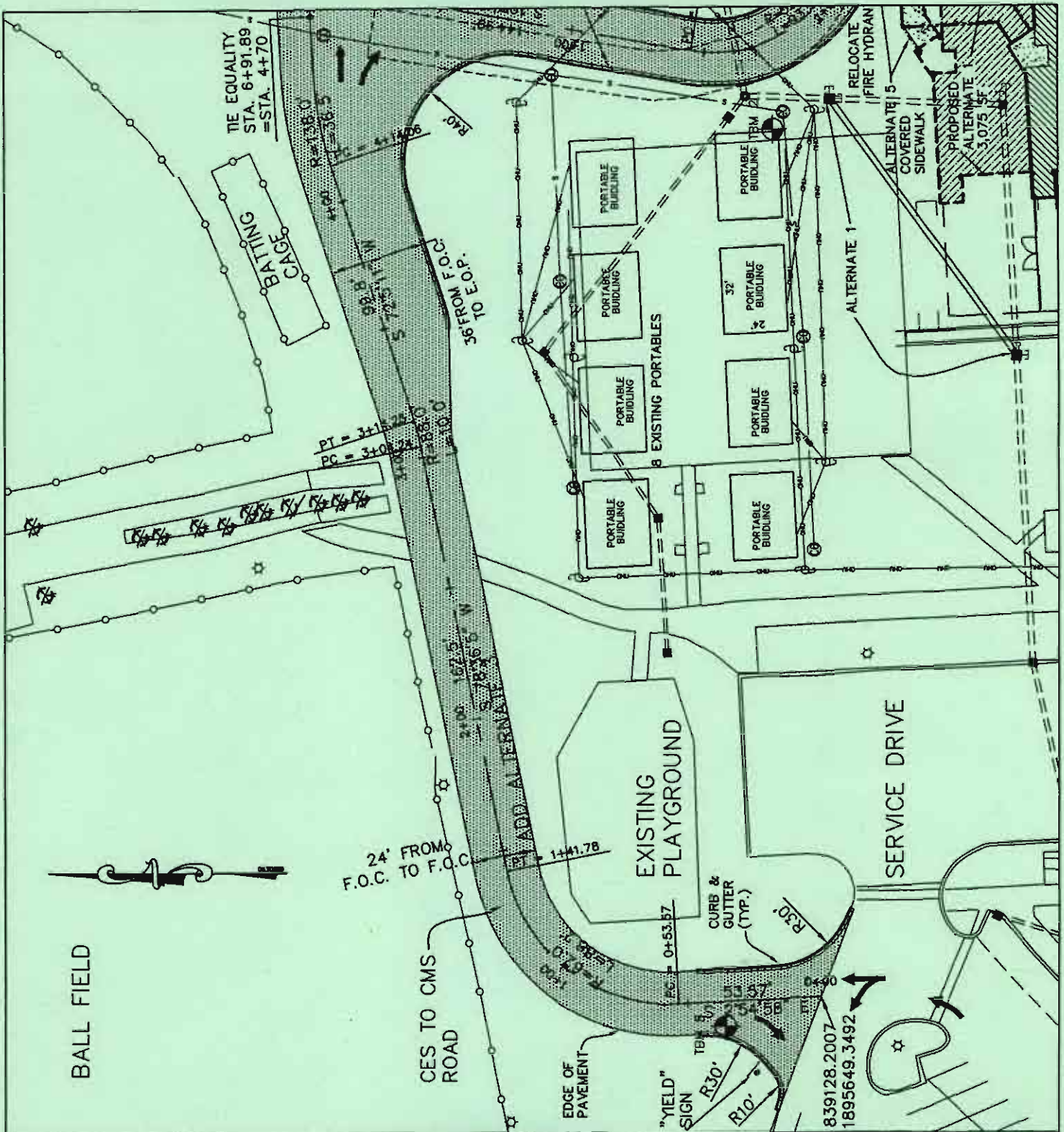
By: LSU/LPL

Project: CHAPIN ELEMENTARY SCHOOL
Description: ADDENDUM 4

201 West Main Street

Lexington, South Carolina 29072

p. 803.957.9373 : f. 803.957.4748



BALL FIELD

24' FROM F.O.C. TO F.O.C.

EXISTING PLAYGROUND

SERVICE DRIVE

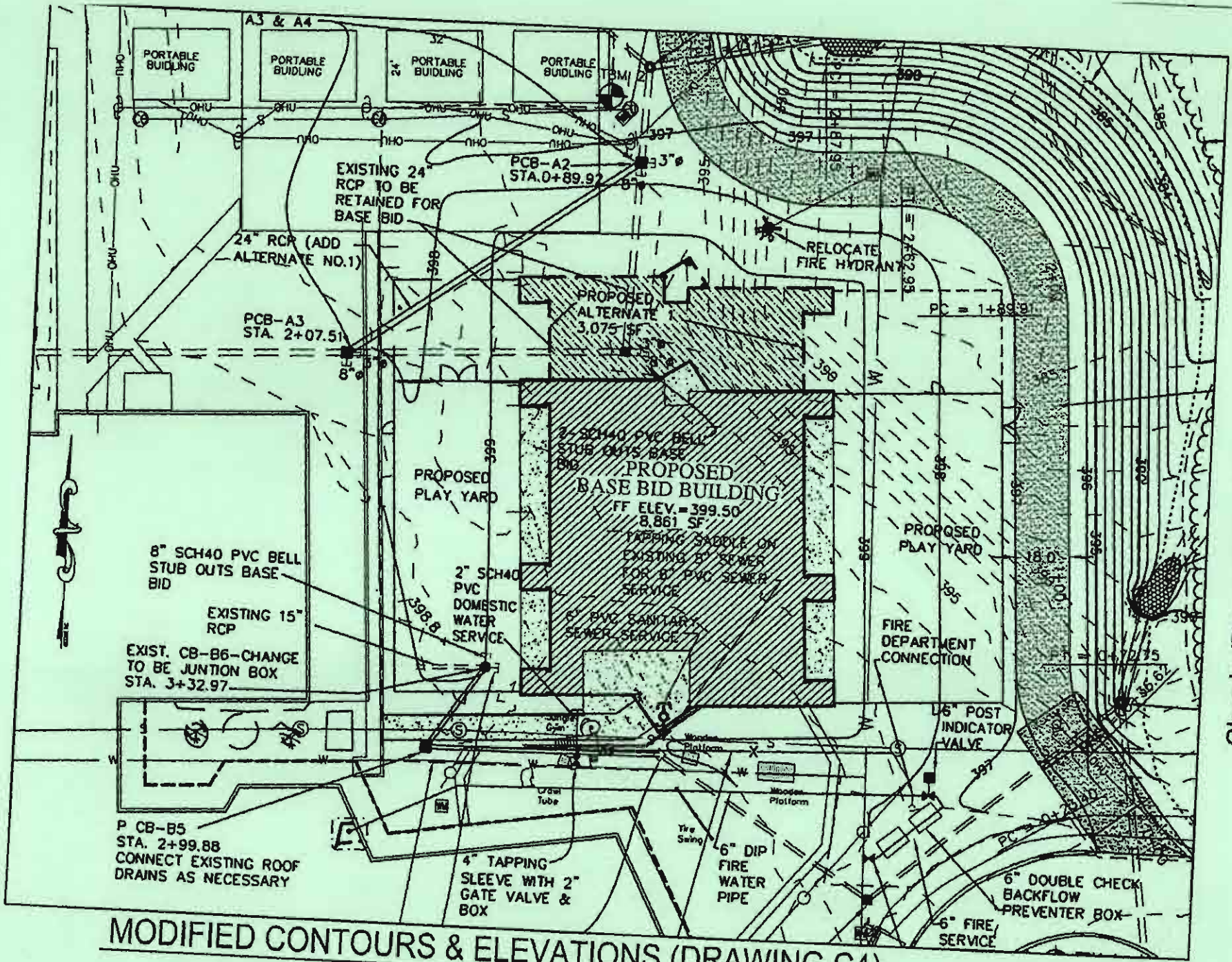


BDC002

PORTION OF DRAWING C3

Project: CHAPIN ELEMENTARY SCHOOL
 Description: ADDENDUM 4

Scale: 1"=50'
 Job#: 07-5020
 Date: 04/09/09
 By: LSU/LPL

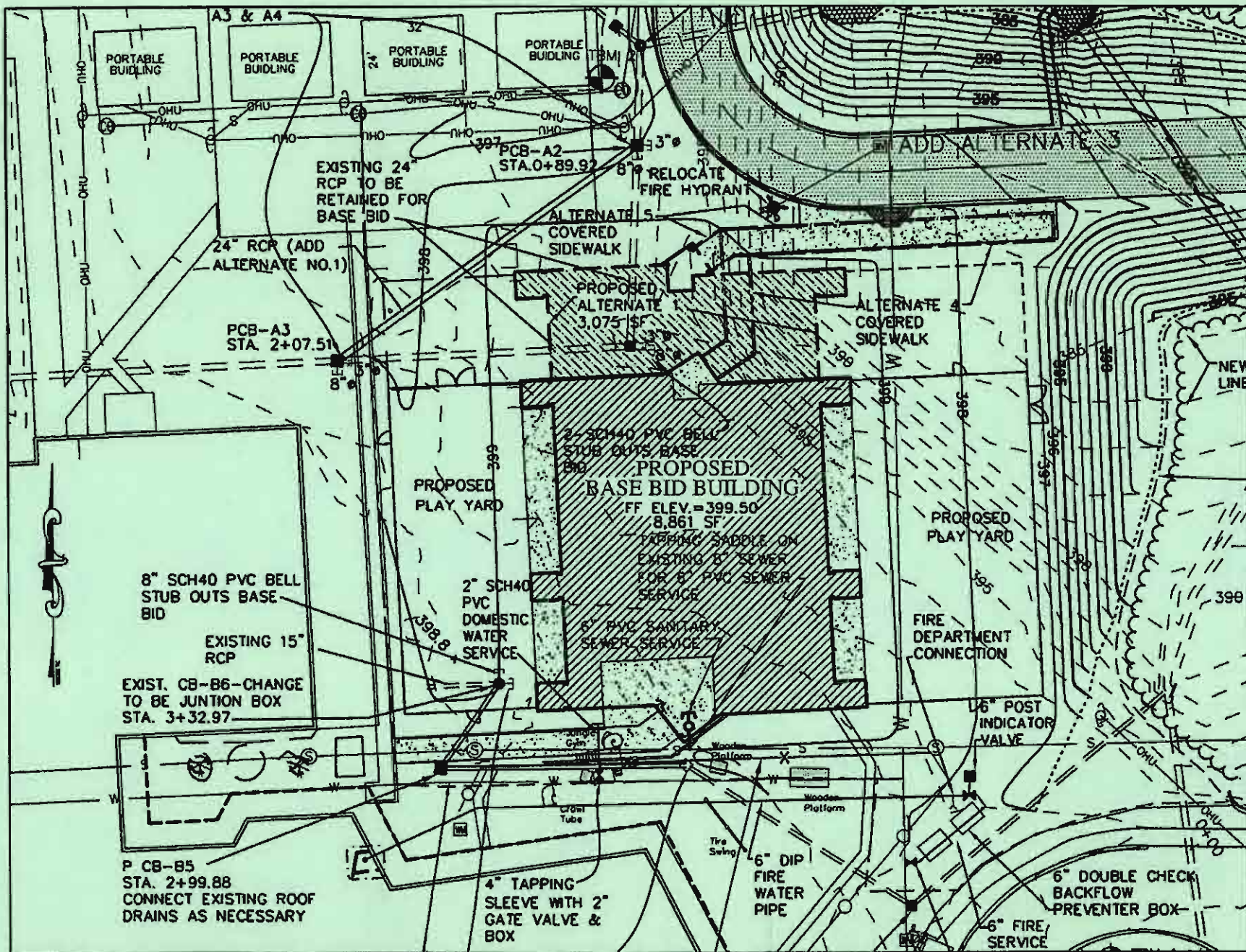


MODIFIED CONTOURS & ELEVATIONS (DRAWING C4)

SCALE: 1"=40'

Chapin Elementary School
Additions and Renovations

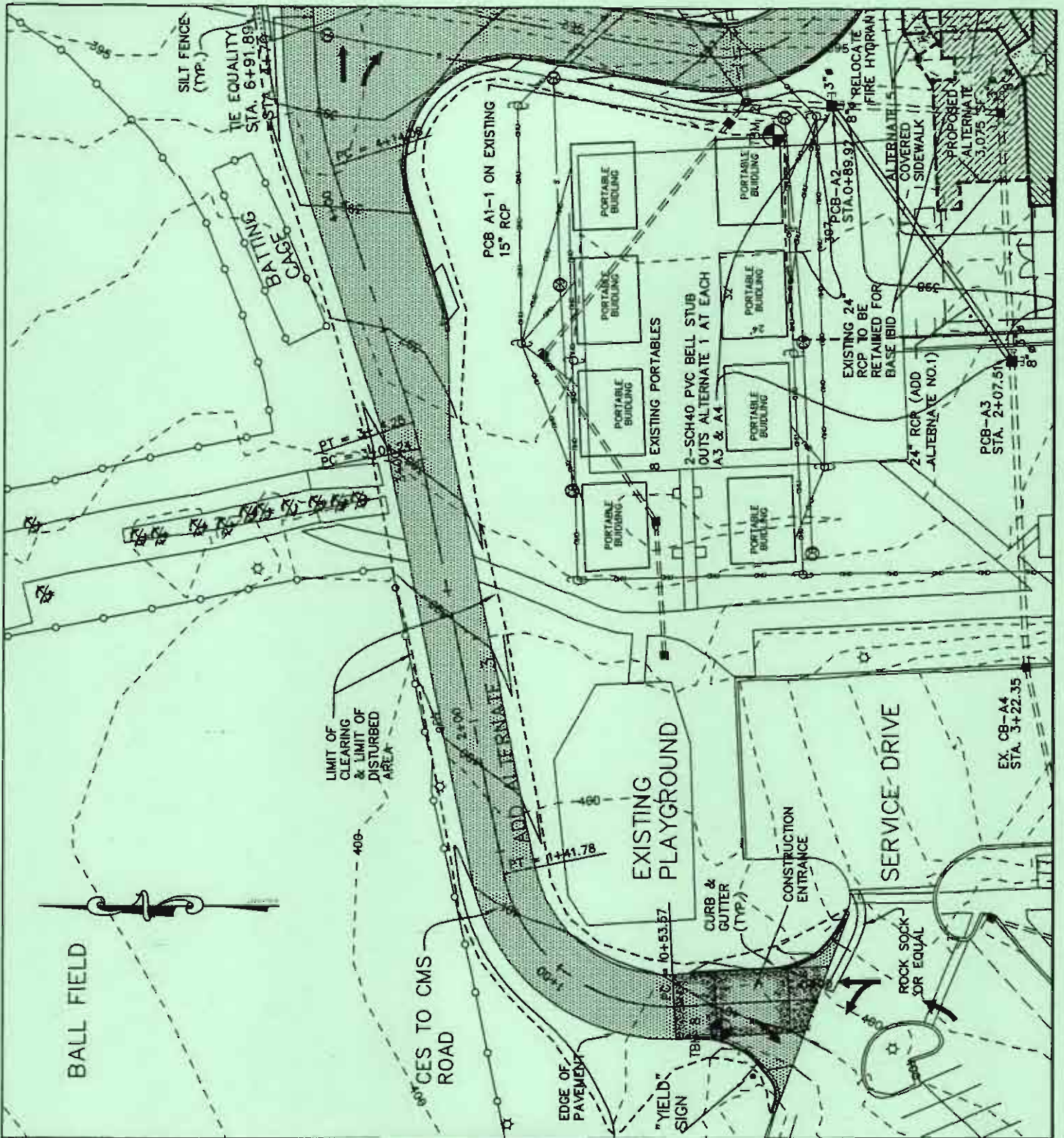
Addendum #4 - 04/09/09
Sketch - RDC



MODIFIED CONTOURS & ELEVATIONS (DRAWING C5)

SCALE: 1"=40'

Chapin Elementary School Additions and Renovations Sketch - BDC004
 Addendum #4 - 04/09/09



PORTION OF
DRAWING C5



architecture | engineering | interior design

Project: CHAPIN ELEMENTARY SCHOOL

Description: ADDENDUM 4

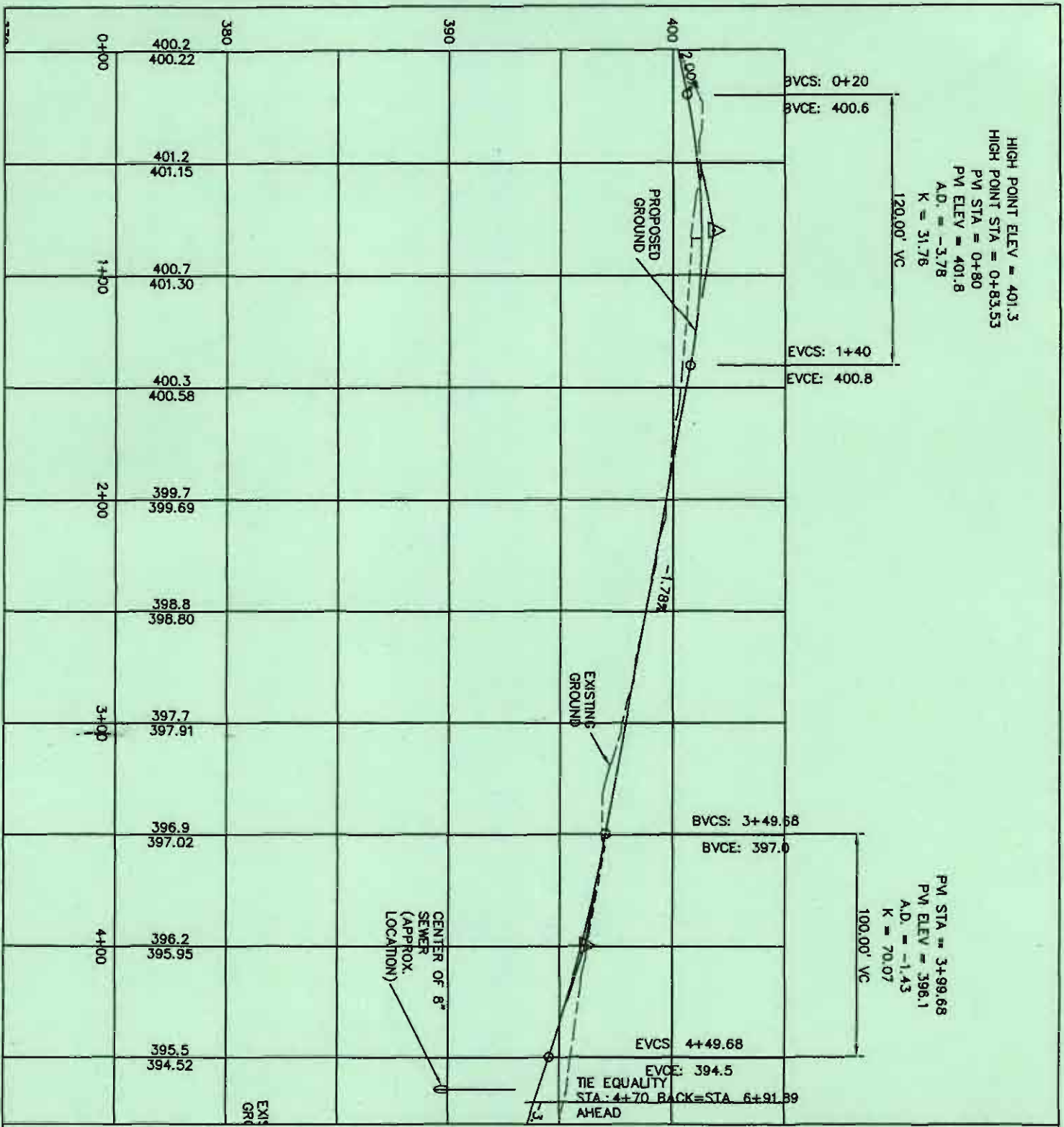
BDC005

Scale: 1"=50'

Job#: 07-5020

Date: 04/09/09

By: LSU/LPL



HIGH POINT ELEV = 401.3
 HIGH POINT STA = 0+83.53
 PM STA = 0+80
 PM ELEV = 401.8
 A.D. = -3.78
 K = 31.76
 120.00' VC

PM STA = 3+99.68
 PM ELEV = 396.1
 A.D. = -1.43
 K = 70.07
 100.00' VC

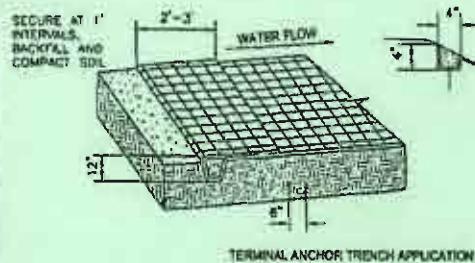


PORTION OF
 DRAWING C6

Project: CHAPIN ELEMENTARY SCHOOL
 Description: ADDENDUM 4

BDC006

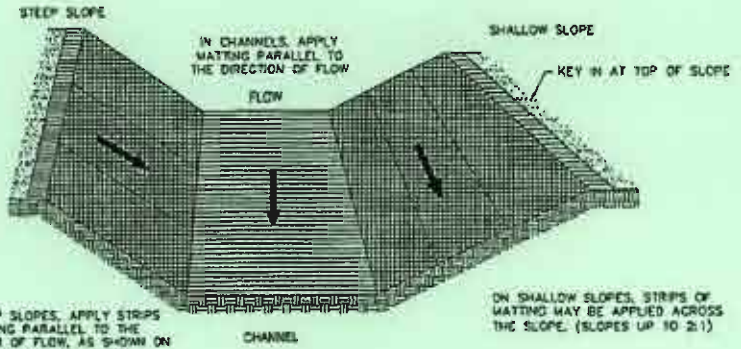
Scale: 1"=60' HOR. 1"=6' VER.
 Job#: 07-5020
 Date: 04/09/09
 By: LSU/LPL



TERMINAL ANCHOR TRENCH APPLICATION



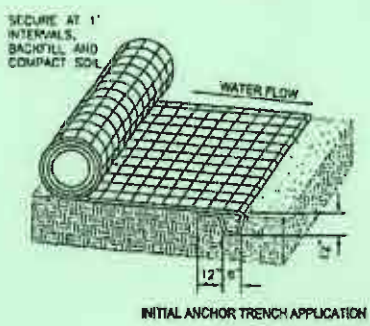
TYPICAL CHANNEL INSTALLATION



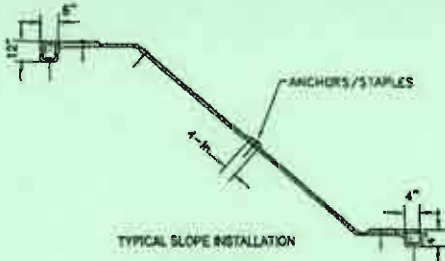
ON STEEP SLOPES, APPLY STRIPS OF MATTING PARALLEL TO THE DIRECTION OF FLOW, AS SHOWN ON DETAIL AND ANCHORS AS PER MANUFACTURER'S SPECIFICATIONS (SLOPES GREATER THAN 2:1)

ON SHALLOW SLOPES, STRIPS OF MATTING MAY BE APPLIED ACROSS THE SLOPE. (SLOPES UP TO 2:1)

MATTING SHOULD BE LAPPED TOP OVER BOTTOM IN FLOW DIRECTION.



INITIAL ANCHOR TRENCH APPLICATION

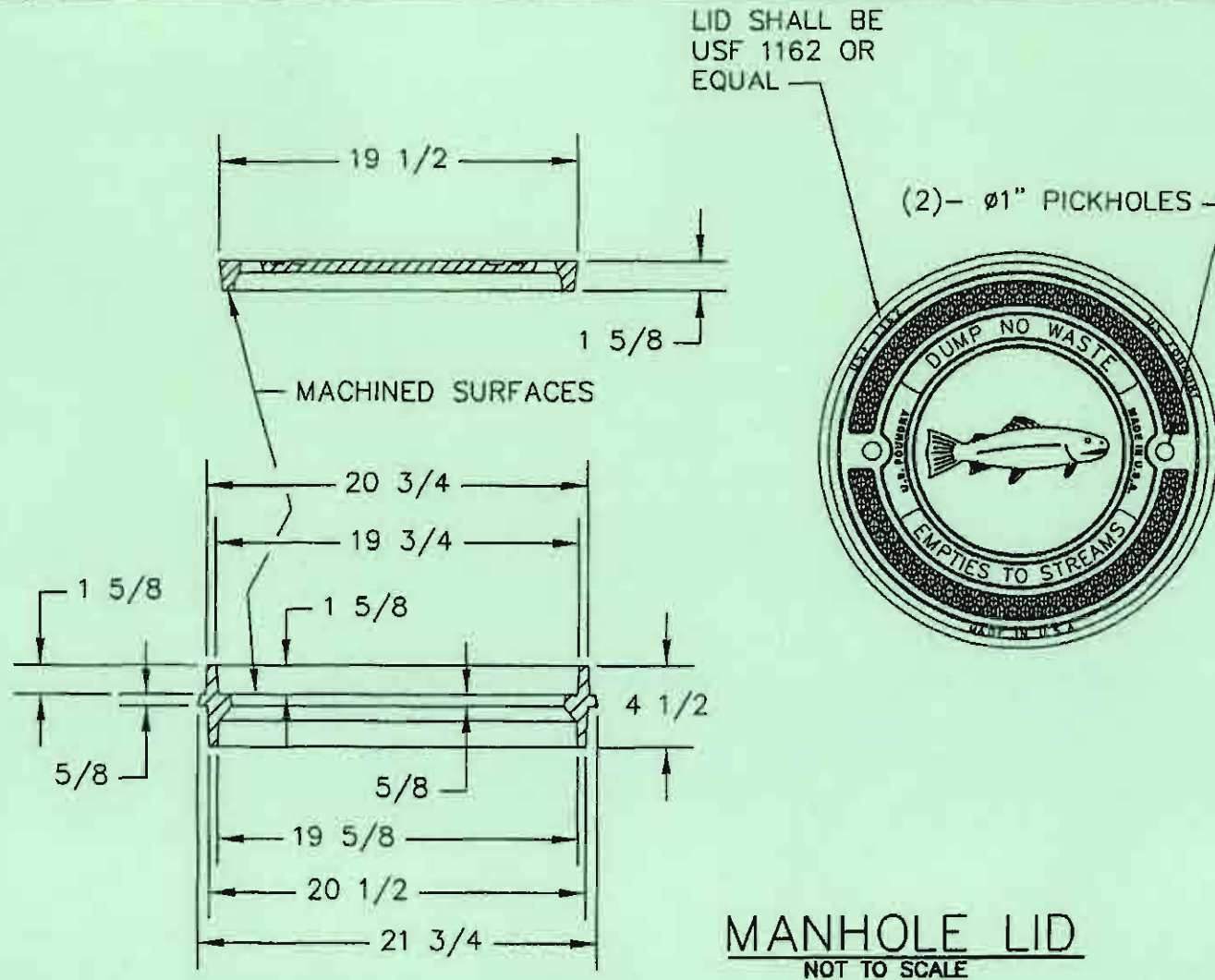


TYPICAL SLOPE INSTALLATION

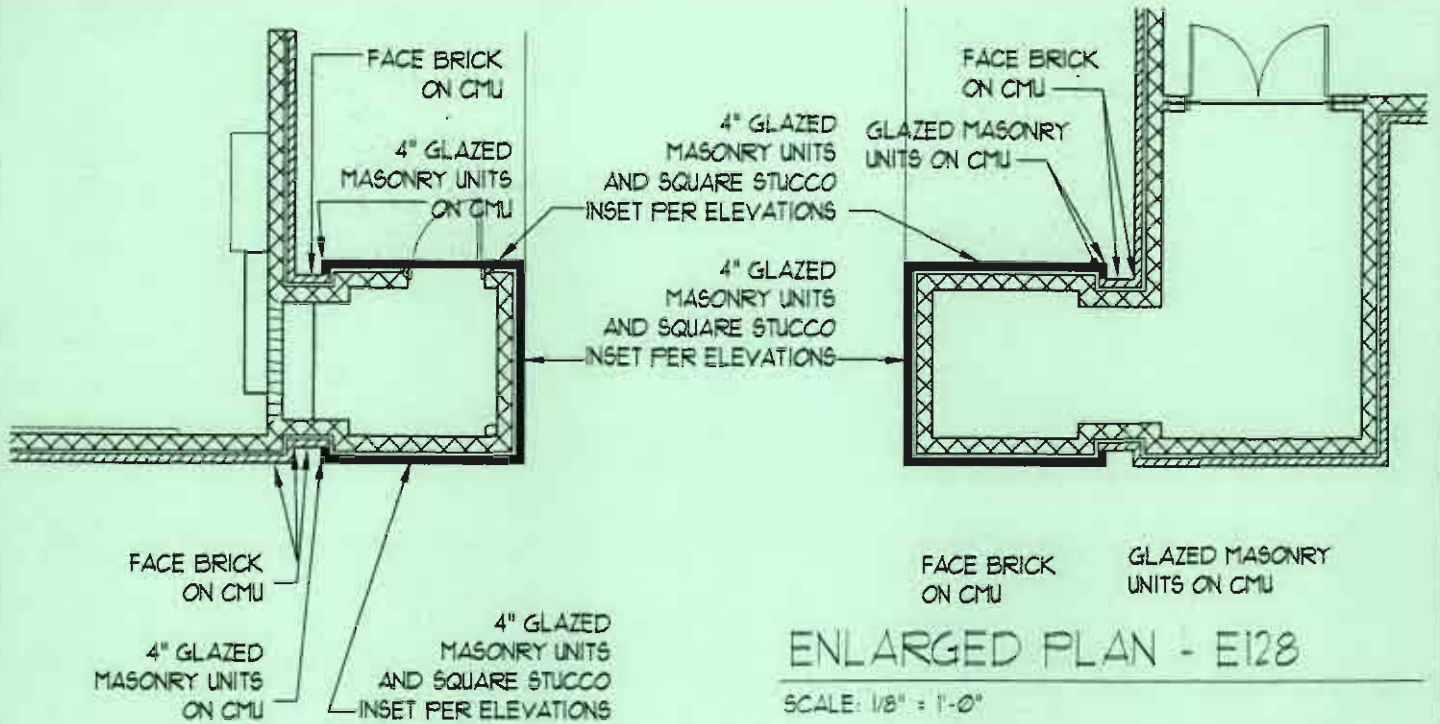
MATTING ORIENTATION
NOT TO SCALE

MATTING DETAIL CHANNEL INSTALLATION
NOT TO SCALE

DRAWING C9
DETAIL FOR INSTALLATION OF
MATTING ON SLOPES



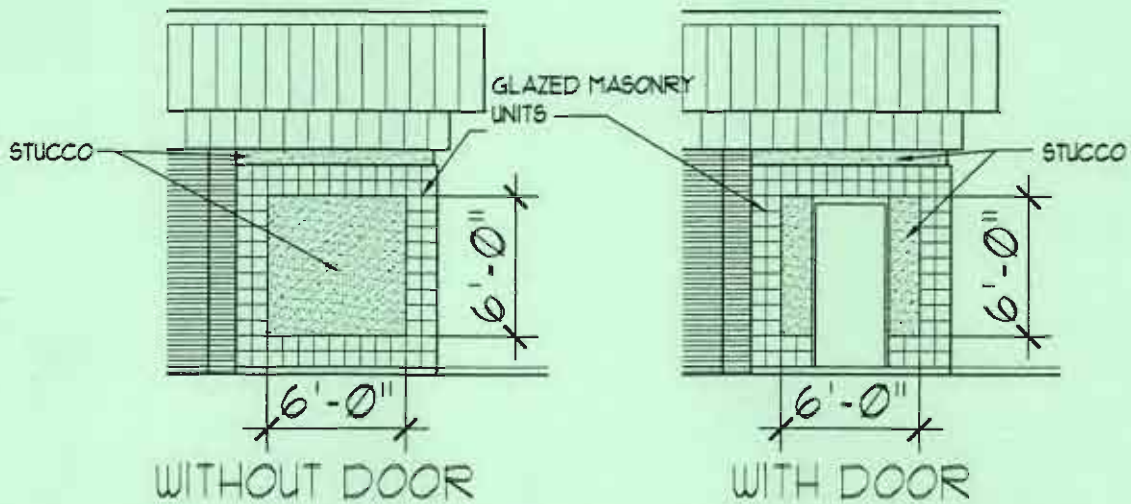
DRAWING C8
MANHOLE FRAME & COVER DETAIL FOR
CATCH BASINS & JUNCTION BOX



ENLARGED PLAN - E128
SCALE: 1/8" = 1'-0"

ENLARGED PLAN - TYPICAL KINDERGARTEN STG. ROOM

SCALE: 1/8" = 1'-0"



TYPICAL KINDERGARTEN STORAGE ROOM ELEVATIONS

SCALE: 1/8" = 1'-0"



architecture | engineering | interior design

Project: CHAPIN ELEMENTARY SCHOOL

Description: ADDENDUM #4

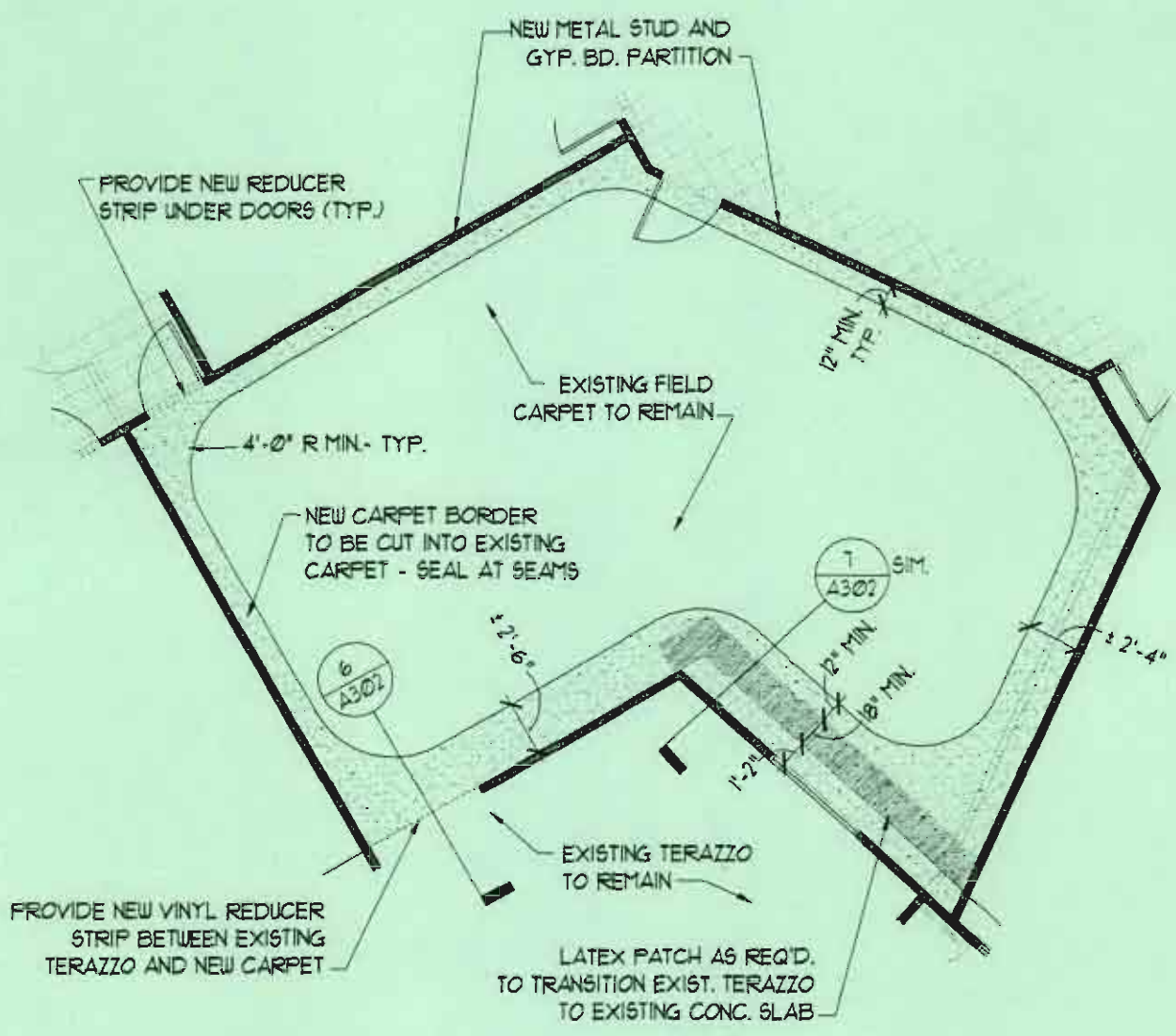
BDA001 Sheet of

Scale: 1/8" = 1'-0"

Job#: 07-5020

Date: 4/9/09

By: JB

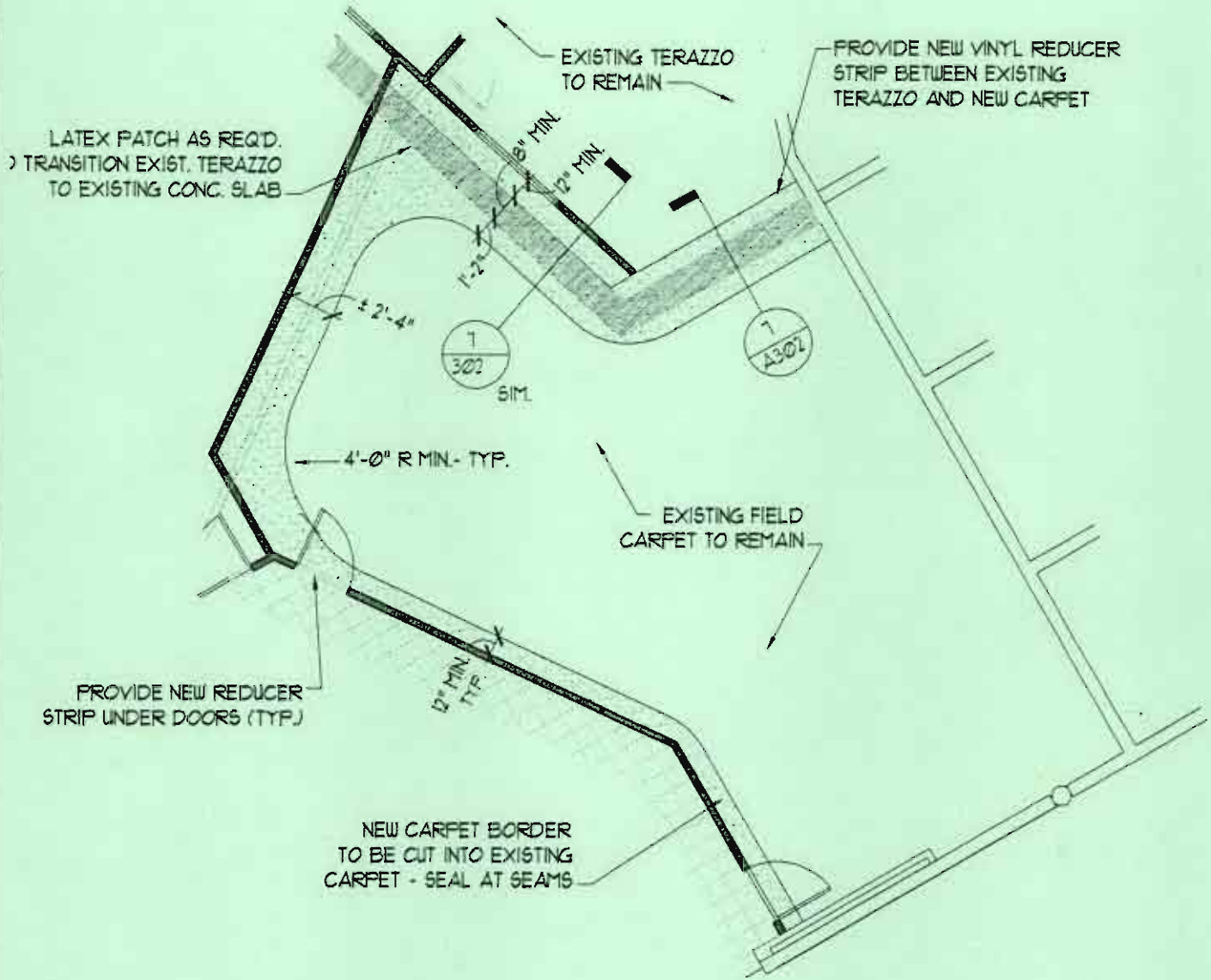


FLOOR FINISH PATTERN PLAN - A112A & B107A
 SCALE: 1/8" = 1'-0" (A107A & B114A - OPPOSITE)



Project: CHAPIN ELEMENTARY SCHOOL
 Description: ADDENDUM #4

BDA002 Sheet of
 Scale: 1/8" = 1'-0"
 Job#: 07-5020
 Date: 4/9/09
 By: AJ



FLOOR FINISH PATTERN PLAN - B125A

SCALE: 1/8" = 1'-0"



architecture | engineering | interior design

Project: CHAPIN ELEMENTARY SCHOOL

Description: ADDENDUM #4

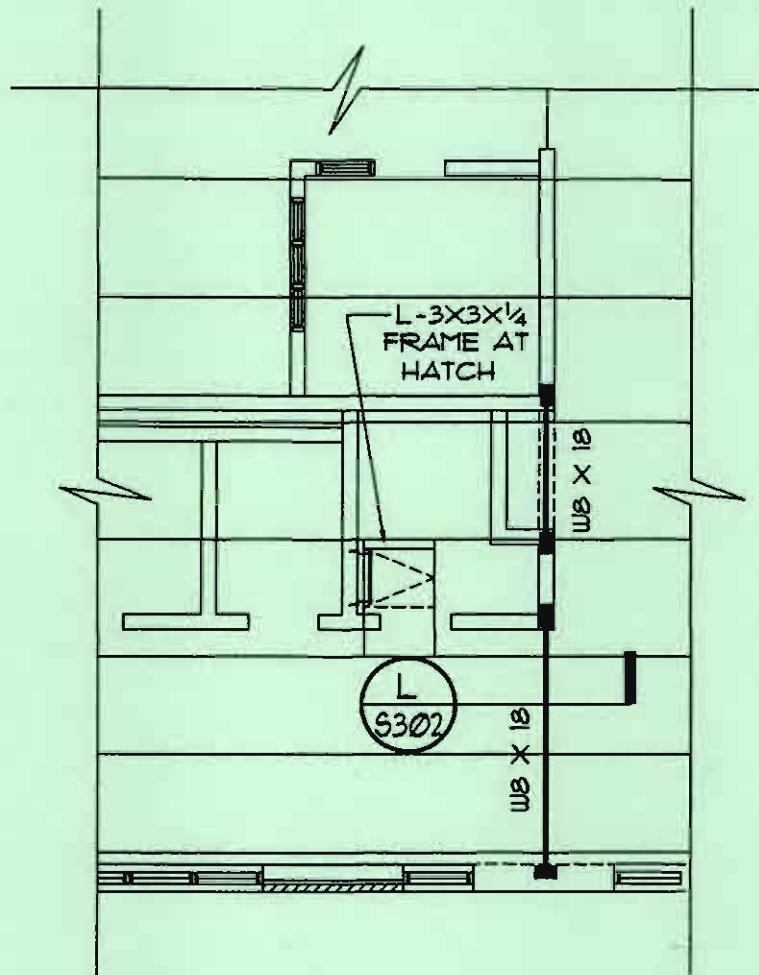
BDA003 Sheet of

Scale: 1/8" = 1'-0"

Job#: 07-5020

Date: 4/9/09

By: AJ



PARTIAL ROOF FRAMING PLAN



architecture | engineering | interior design

Project: CHAPIN ELEMENTARY SCHOOL

Description: ADDENDUM 4

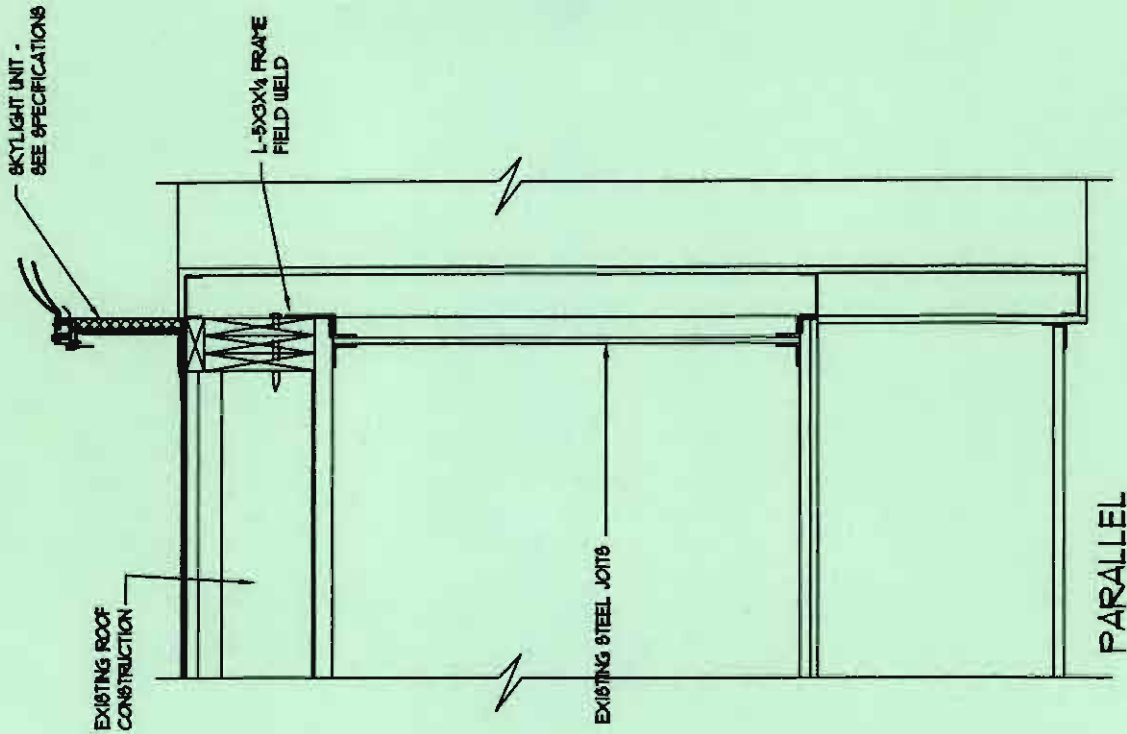
BDS001

Scale: 1/8" = 1'-0"

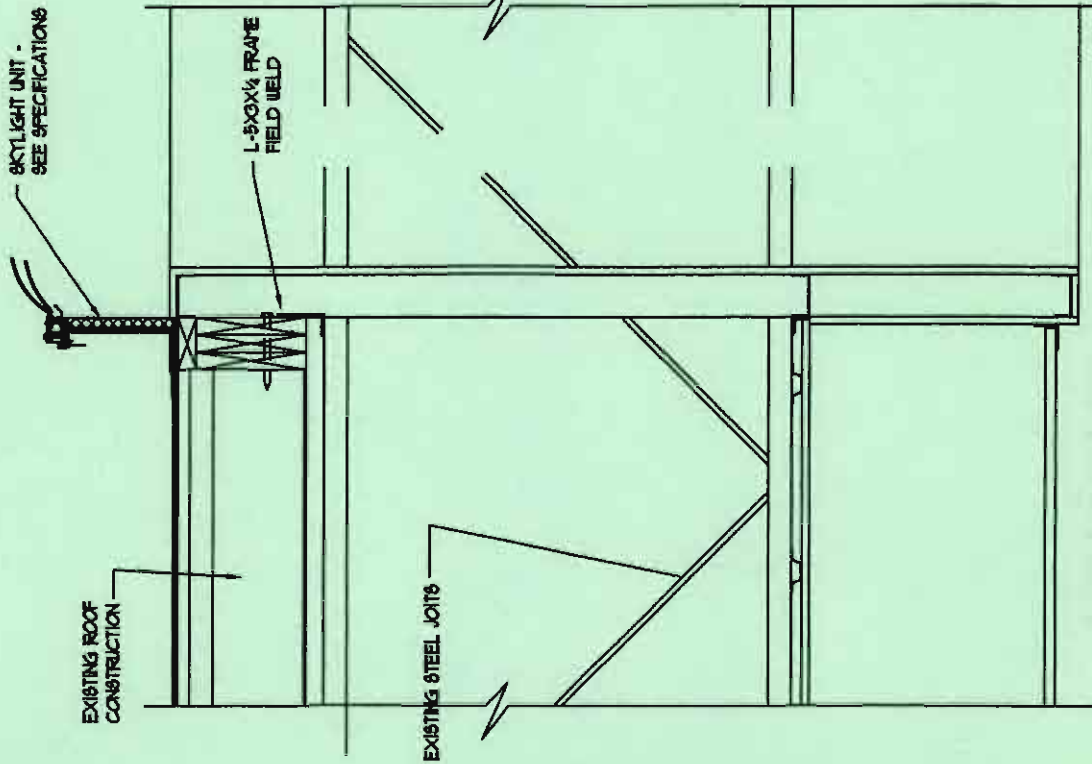
Job#: 07-5020

Date: 04/09/09

By: JLM

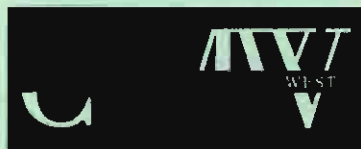


PARALLEL



PERPENDICULAR

AREAS "A" AND "B"
TYPICAL SKYLIGHT DETAILS



architecture | engineering | interior design

Project: CHAPIN ELEMENTARY SCHOOL

Description: ADDENDUM 4

BDS002

Scale: 3/4" = 1'-0"

Job#: 07-5020

Date: 04/09/09

By: JLM

Project: CHAPIN ELEMENTARY SCHOOL
Description: ADDENDUM 4

architects | engineering | interior design



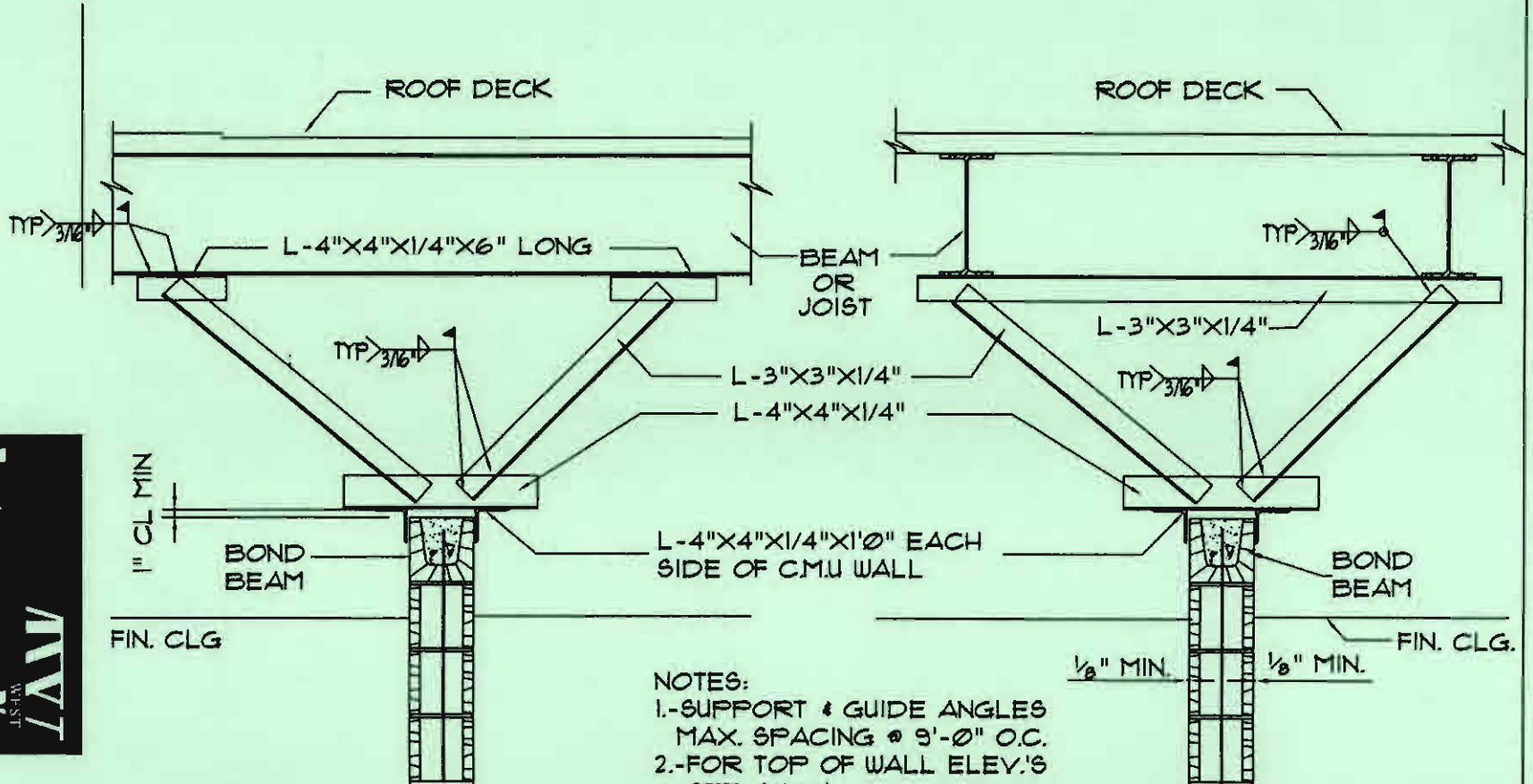
BDS003

Scale: 3/4" = 1'-0"

Job #: 07-5020

Date: 04/09/09

By: JLM



WALL PERPENDICULAR TO FRAMING

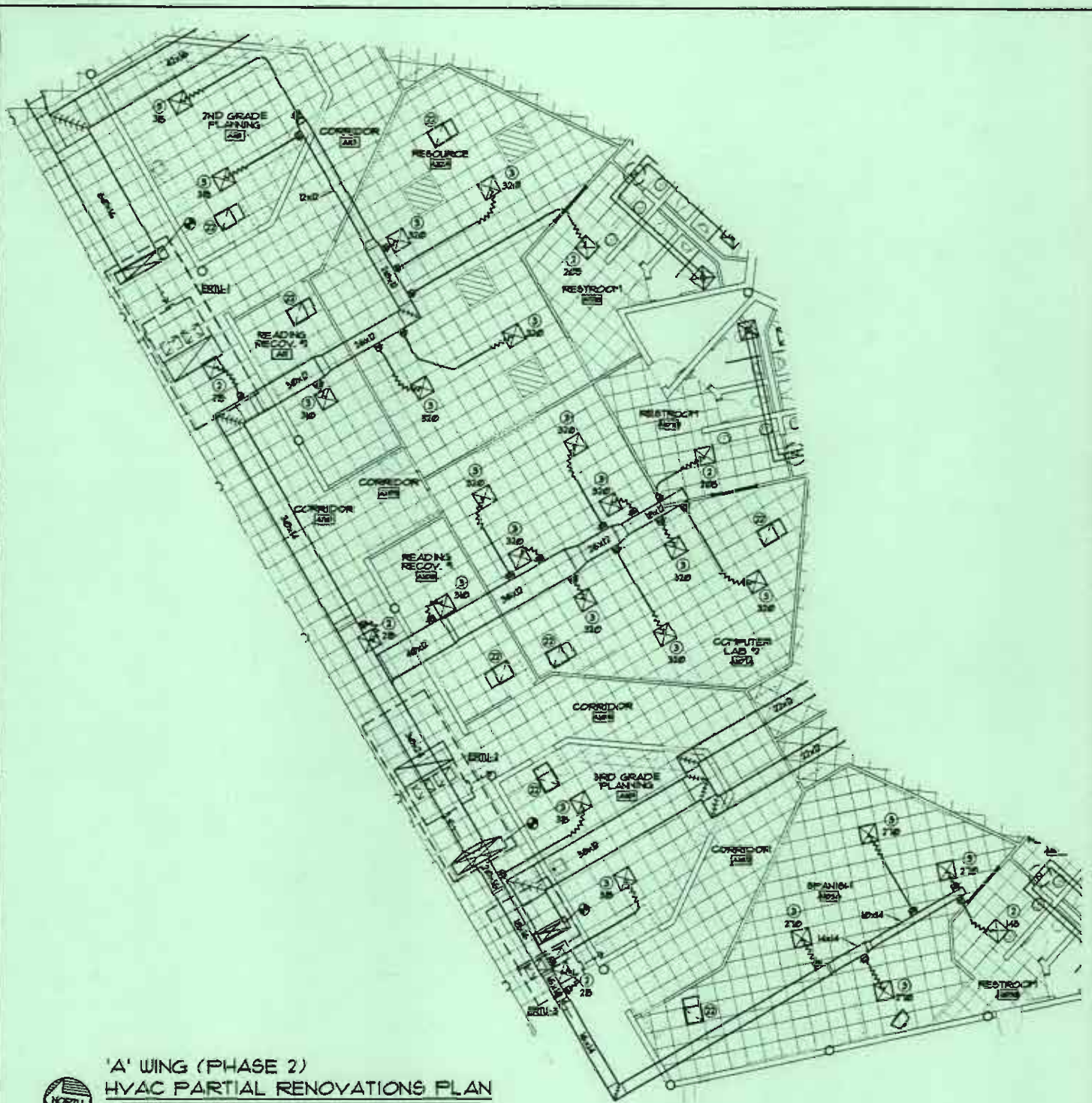
WALL PARALLEL TO FRAMING

- NOTES:
- 1.-SUPPORT & GUIDE ANGLES
MAX. SPACING @ 9'-0" O.C.
 - 2.-FOR TOP OF WALL ELEV.'S
SEE ARCH.

- NOTES:
1. PROVIDE WALL BRACING AS SHOWN IN STRAIGHT RUNS OF WALLS LONGER THAN 9'-0" WHICH DO NOT HAVE INTERSECTING WALLS. LOCATE BRACING AS REQUIRED TO LIMIT THE MAXIMUM WALL LENGTH WITHOUT BRACING OR INTERSECTING WALLS TO 9'-0". ALSO PROVIDE BRACING WHERE SPECIFICALLY NOTED ON ROOF FRAMING PLANS.
 2. SEE THE ARCHITECTURAL DRAWINGS FOR TOP OF WALL ELEVATIONS.

TYP. NON-LOAD BEARING WALL BRACING-WALLS NOT EXTENDING TO DECK

3/4" = 1'-0"



'A' WING (PHASE 2)
 HVAC PARTIAL RENOVATIONS PLAN



SCALE: 1/16" = 1'-0"

**MECHANICAL
 DESIGN
 INC.**

4403 Broad River Road
 Columbia, S.C. 29210
 (803) 731-9834
 (803) 731-9837 FAX
 CONTACT: Danny Wilds
 COMM. NO. 082630



architecture | engineering | interior design

Project: CHAPIN ELEMENTARY SCHOOL

Description: ADDENDUM 4

'A' WING - HVAC PARTIAL RENOVATIONS PLAN

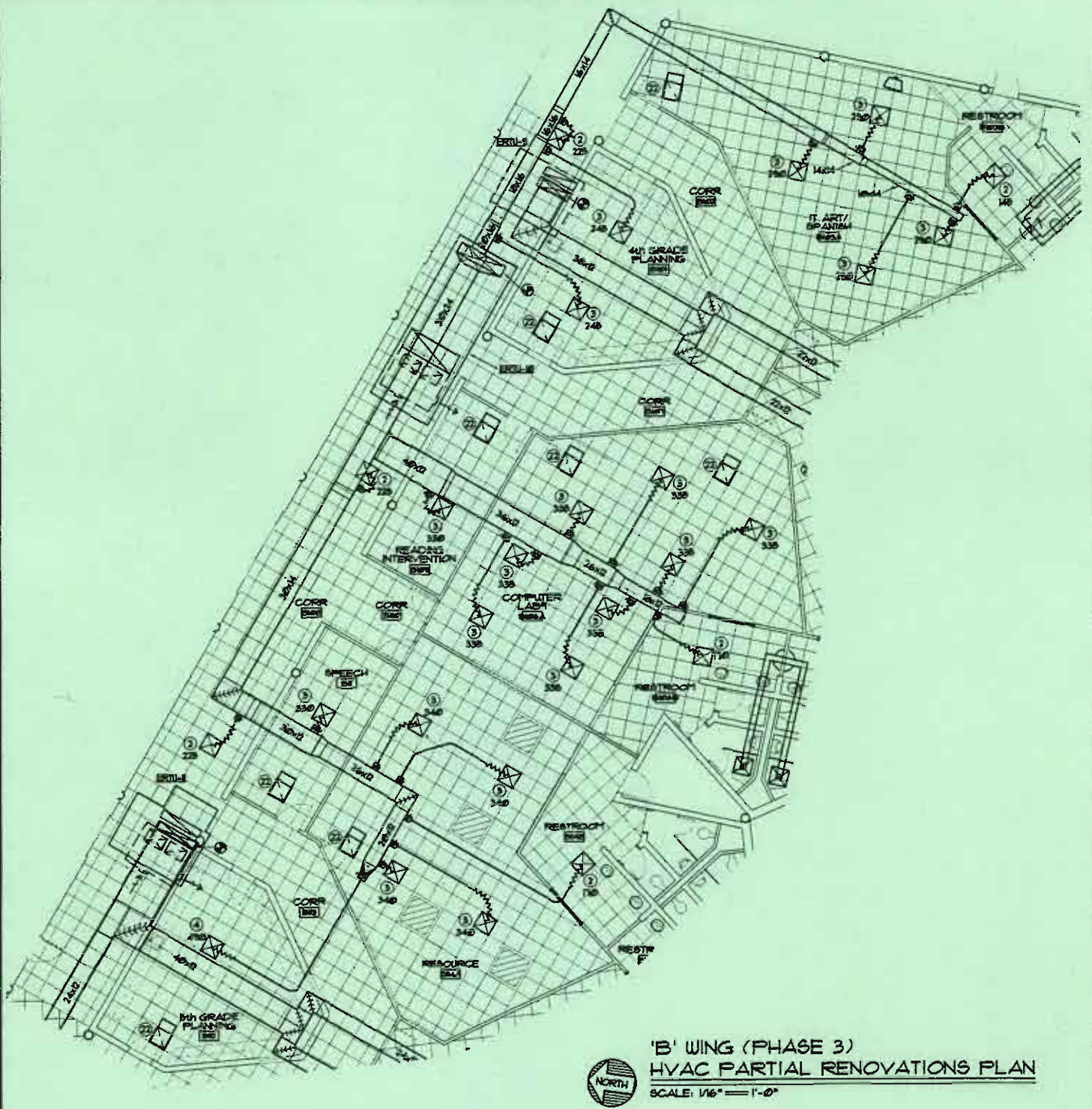
BDM001

Scale: 1/16" = 1'-0"

Job#: 07-5020

Date: APRIL 9, 2009

By: JPO



'B' WING (PHASE 3)
 HVAC PARTIAL RENOVATIONS PLAN
 SCALE: 1/16" = 1'-0"

**MECHANICAL
 DESIGN
 INC.**

4403 Broad River Road
 Columbia, S.C. 29210
 (803) 731-9834
 (803) 731-9837 FAX
 CONTACT: Danny Wilds
 COMM. NO. 082630



architecture | engineering | interior design

Project: CHAPIN ELEMENTARY SCHOOL
 Description: ADDENDUM 4

'B' WING - HVAC PARTIAL RENOVATIONS PLAN

BDM002

Scale: 1/16" = 1'-0"
 Job#: 07-5020
 Date: APRIL 9, 2009
 By: JPO

GRILLE AND DIFFUSER SCHEDULE

MARK	SERVICE	NECK SIZE	MAX CFM	RUNOUT SIZE	REMARKS
①	SUPPLY	6"φ	110	6"φ	W/ BUTTERFLY DPR
②	SUPPLY	8"φ	230	8"φ	W/ BUTTERFLY DPR
③	SUPPLY	10"φ	375	10"φ	W/ BUTTERFLY DPR
④	SUPPLY	12"φ	600	12"φ	W/ BUTTERFLY DPR
⑧	RETURN	8"x8"	250	8"x8"	W/ OPP. BL. DPR**
②②	RETURN	22"x22"	1,800	22"x14"	W/ OPP. BL. DPR**

GRILLE/ DIFFUSER	CEILING TYPE	PRICE* MODEL NO.	MATERIAL
SQUARE SUPPLY	LAY-IN	SPD-31	STEEL
SQUARE SUPPLY	GYP. BD.	SPD-31	STEEL
SQUARE RETURN	LAY-IN	81-TB	ALUMINUM
SQUARE RETURN	GYP. BD.	81-F-A	ALUMINUM

* OR EQUAL BY CARNES, METALAIRE, NAILOR, KREUGER OR APPROVED EQUAL.

** CONTRACTOR MAY OMIT DAMPER IN RETURN GRILLES.

- NOTES:**
1. GRILLE AND DIFFUSER LOCATIONS SHOWN ON FLOOR PLANS ARE APPROXIMATE, SEE ARCHITECTURAL REFLECTED CEILING PLAN FOR EXACT LOCATION.
 2. GRILLES AND DIFFUSERS SHALL MATCH CEILING TYPE, SEE ARCHITECTURAL DRAWINGS FOR CEILING TYPE.
 3. GRILLE AND DIFFUSER COLORS SHALL BE SELECTED BY ARCHITECT, SUBMIT COLOR SAMPLES TO ARCHITECT.
 4. LAY-IN EGGCRATE SHALL HAVE FULL FACE (24x24) AND FULL SIZE STEEL BACK PLATE WITH DUCT CONNECTOR COLLAR. INTERIOR OF GRILLE SHALL BE FLAT BLACK.

**MECHANICAL
DESIGN
INC.**

4403 Broad River Road
Columbia, S.C. 29210
(803) 731-9834
(803) 731-9837 FAX
CONTACT: Danny Wilds
COMM. NO. 082630



architecture | engineering | interior design

Project: CHAPIN ELEMENTARY SCHOOL

Description: ADDENDUM 4

HVAC SCHEDULE

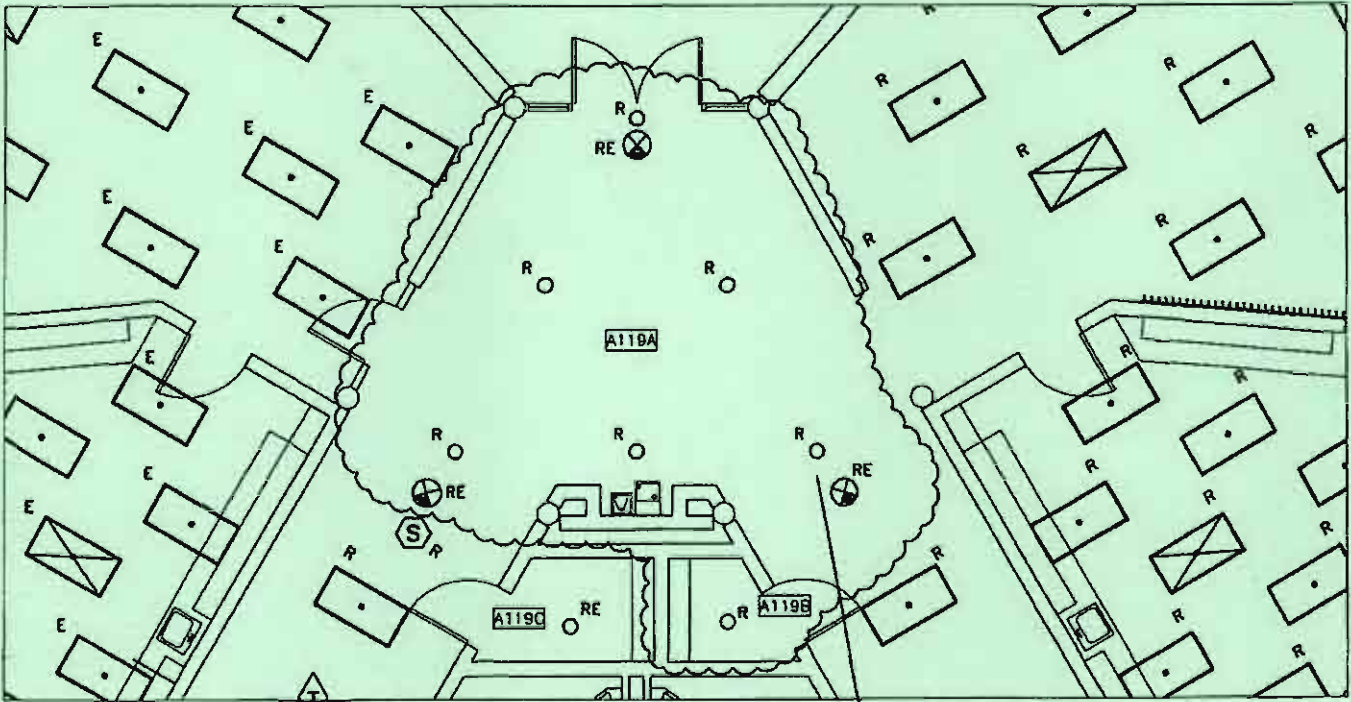
BDM004

Scale: NO SCALE

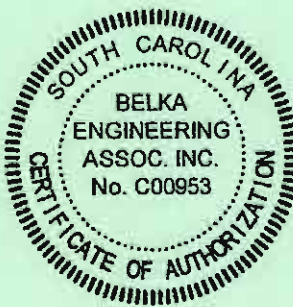
Job#: 07-5020

Date: APRIL 9, 2009

By: JPO



EXISTING FIXTURES SHALL BE REPLACED IN RENOVATION PHASE (TYPICAL).



CO2808

BEA BELKA ENGINEERING ASSOCIATES, INC.

7 CLUSTERS COURT, SUITE 201
 COLUMBIA, SOUTH CAROLINA 29210
 (803) 731-0650 fax (803) 731-2880
 EMAIL: kbelko@bellsouth.net



architecture | engineering | interior design

Project: **CHAPIN ELEMENTARY SCHOOL**

Description: **ADDENDUM 1**

Reference Sheet E1.0

BDE001

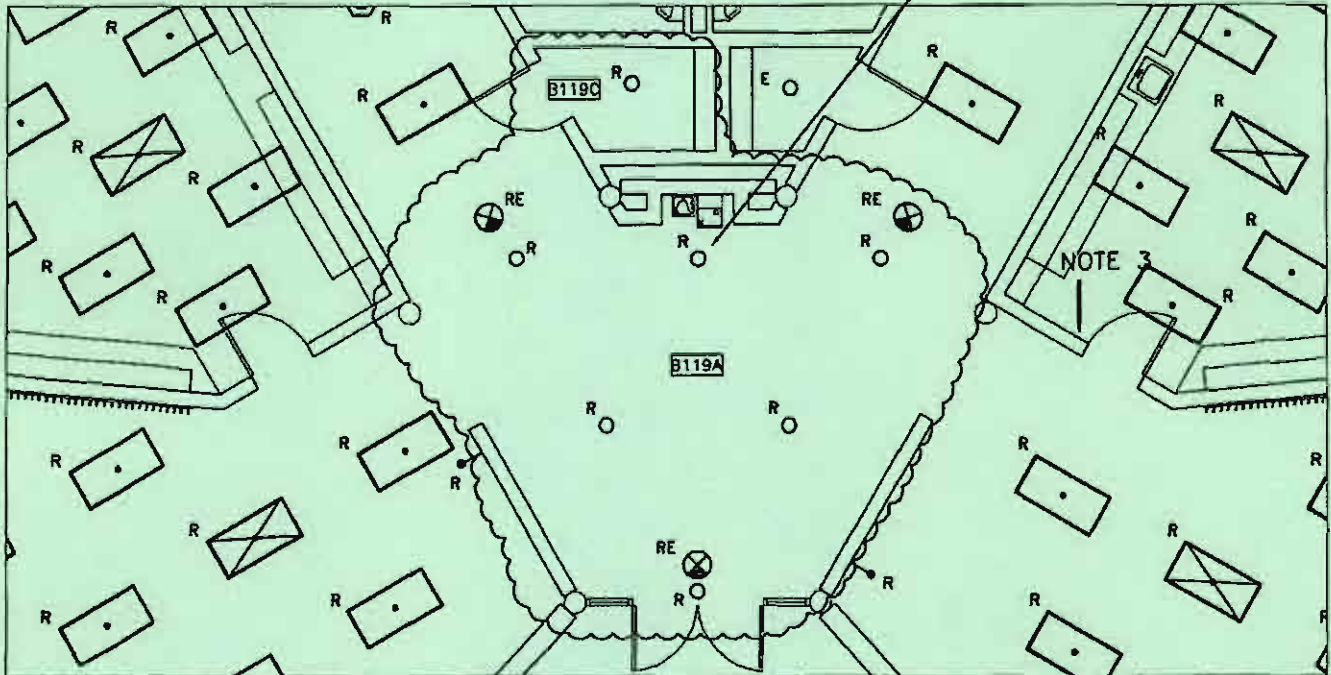
Scale: **1/8" = 1'-0"**

Job #: **07-5020**

Date: **03/26/09**

By: **TSR**

EXISTING FIXTURES SHALL BE REPLACED IN RENOVATION PHASE (TYPICAL).



C02808

BEA BELKA ENGINEERING ASSOCIATES, INC.

7 CLUSTERS COURT, SUITE 201
 COLUMBIA, SOUTH CAROLINA 29210
 (803) 731-0650 fax (803) 731-2880
 EMAIL: kbelko@bellsouth.net



architecture | engineering | interior design

Project: **CHAPIN ELEMENTARY SCHOOL**

Description: **ADDENDUM 1**

Reference Sheet E1.1

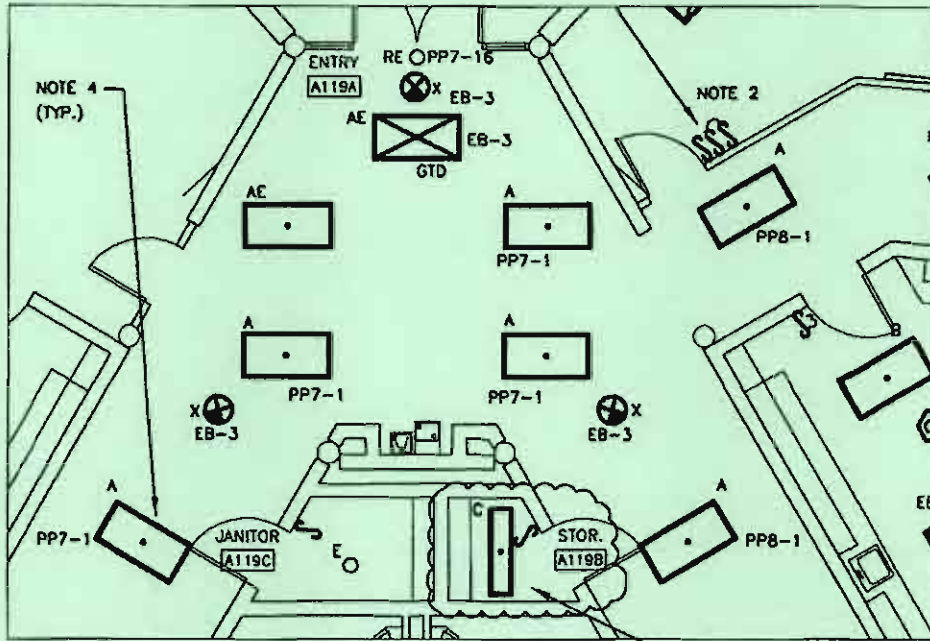
BDE002

Scale: $1/8" = 1'-0"$

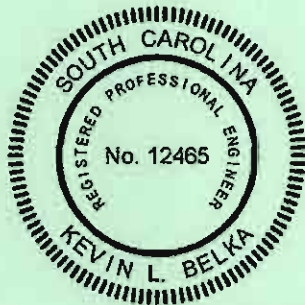
Job#: **07-5020**

Date: **03/26/09**

By: **TSR**



PROVIDE NEW TYPE "C" FIXTURE CHAIN HUNG FROM STRUCTURE.
 CONNECT FIXTURE TO EXISTING LIGHTING CIRCUIT IN THIS ROOM.



C02808

BEA BELKA ENGINEERING ASSOCIATES, INC.

7 CLUSTERS COURT, SUITE 201
 COLUMBIA, SOUTH CAROLINA 29210
 (803) 731-0650 fax (803) 731-2880
 EMAIL: kbelka@bellsouth.net



BDE003

Project: **CHAPIN ELEMENTARY SCHOOL**

Description: **ADDENDUM 1**

Reference Sheet E2.0

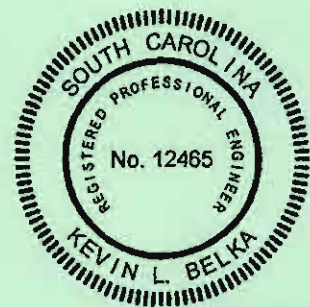
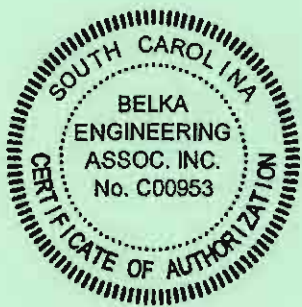
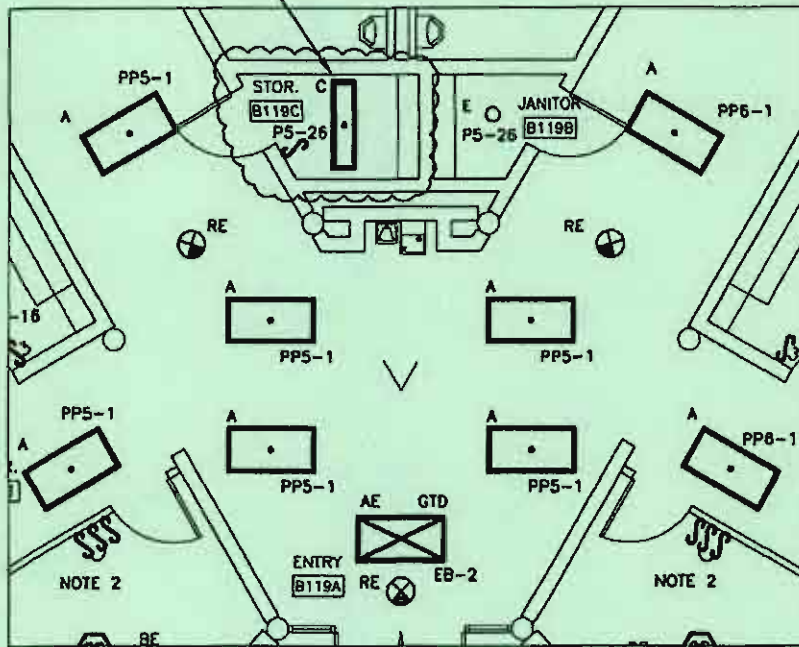
Scale: **1/8" = 1'-0"**

Job#: **07-5020**

Date: **03/26/09**

By: **TSR**

PROVIDE NEW TYPE "C" FIXTURE CHAIN HUNG FROM STRUCTURE.



C02808

BEA BELKA ENGINEERING ASSOCIATES, INC.

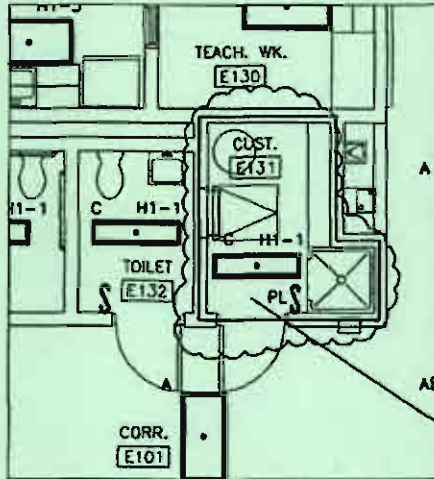
7 CLUSTERS COURT, SUITE 201
 COLUMBIA, SOUTH CAROLINA 29210
 (803) 731-0850 fax (803) 731-2880
 EMAIL: kbelko@bellsouth.net



BDE004

Project: **CHAPIN ELEMENTARY SCHOOL**
 Description: **ADDENDUM 1**
Reference Sheet E2.1

Scale: **1/8" = 1'-0"**
 Job#: **07-5020**
 Date: **03/26/09**
 By: **TSR**



TYPE "C" FIXTURE SHALL BE CHAIN HUNG FROM STRUCTURE.



BEA	BELKA ENGINEERING ASSOCIATES, INC.	C02808
	7 CLUSTERS COURT, SUITE 201 COLUMBIA, SOUTH CAROLINA 29210 (803) 731-0650 fax (803) 731-2880 EMAIL: kbelko@bellsouth.net	



BDE005

Project: **CHAPIN ELEMENTARY SCHOOL**

Description: **ADDENDUM 1**

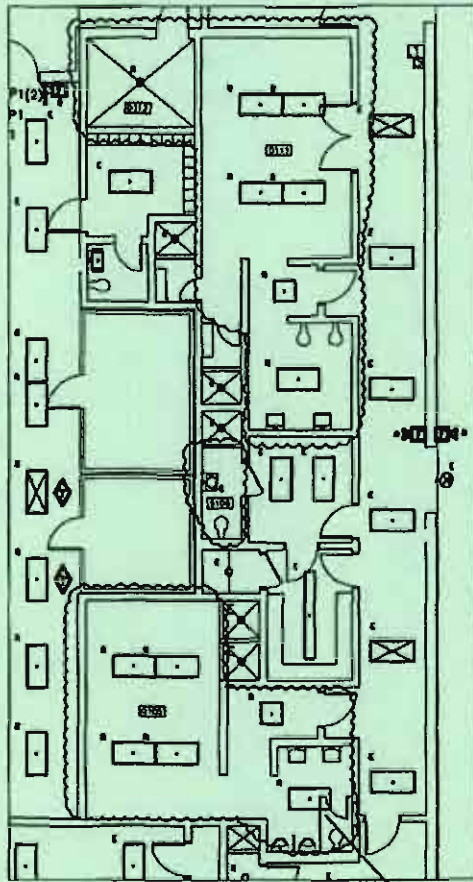
Reference Sheet E2.4

Scale: **1/8" = 1'-0"**

Job #: **07-5020**

Date: **03/26/09**

By: **TSR**



LIGHTING FIXTURES TO BE REMOVED
(TYPICAL OF ALL FIXTURES DENOTED "R").



BEA

**BELKA
ENGINEERING
ASSOCIATES, INC.**

C02808

7 CLUSTERS COURT, SUITE 201
COLUMBIA, SOUTH CAROLINA 29210
(803) 731-0650 fax (803) 731-2880
EMAIL: kbelka@bellsouth.net



Project: **CHAPIN ELEMENTARY SCHOOL**

Description: **ADDENDUM 1**

Reference Sheet E1.3

BDE006

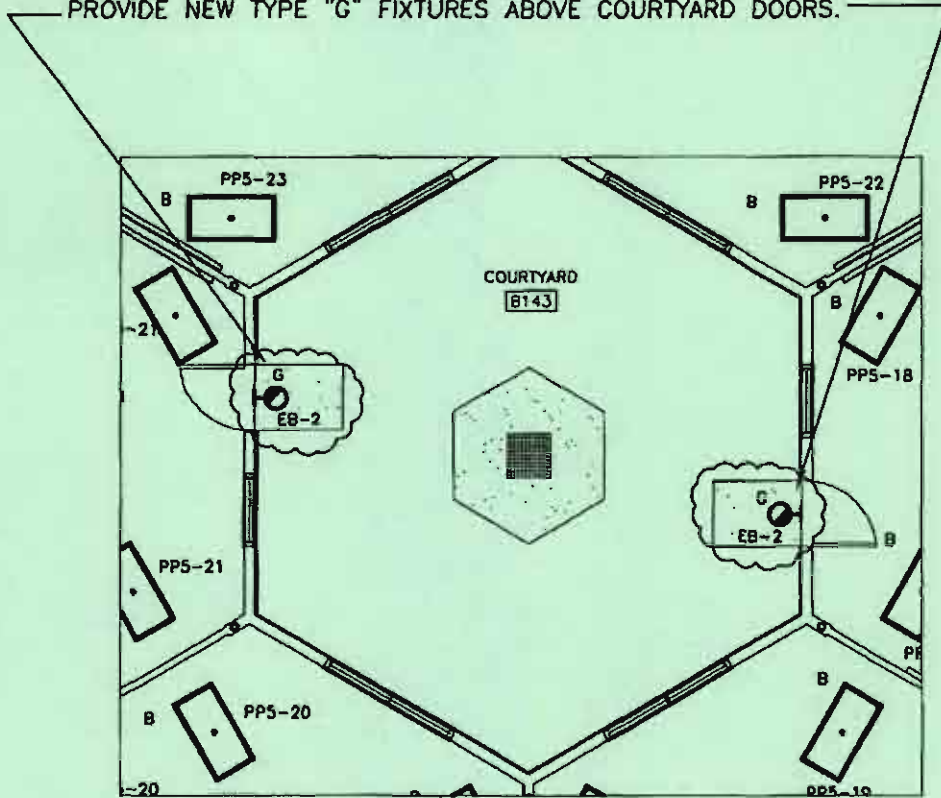
Scale: **1/8" = 1'-0"**

Job#: **07-5020**

Date: **03/26/09**

By: **TSR**

PROVIDE NEW TYPE "G" FIXTURES ABOVE COURTYARD DOORS.



BEA

**BELKA
ENGINEERING
ASSOCIATES, INC.**

C02808

7 CLUSTERS COURT, SUITE 201
COLUMBIA, SOUTH CAROLINA 29210
(803) 731-0650 fax (803) 731-2880
EMAIL: kbelko@bellsouth.net



Project: **CHAPIN ELEMENTARY SCHOOL**

Description: **ADDENDUM 1**

Reference Sheet E2.1

BDE008

Scale: **1/8" = 1'-0"**

Job#: **07-5020**

Date: **03/26/09**

By: **TSR**