

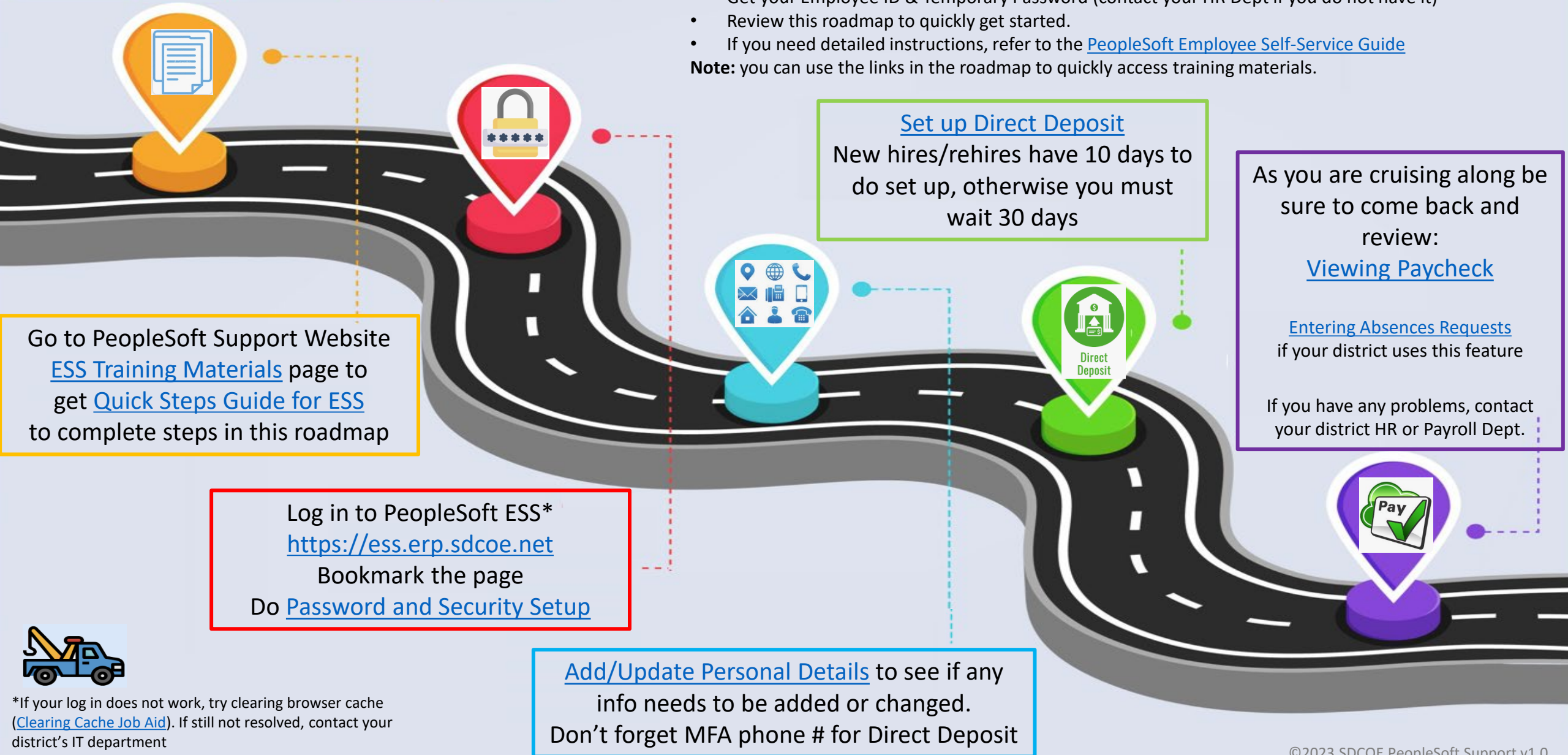
Employee Self-Service Roadmap

Welcome to PeopleSoft Employee Self-Service (ESS)

Before you get started:

- Get your Employee ID & Temporary Password (contact your HR Dept if you do not have it)
- Review this roadmap to quickly get started.
- If you need detailed instructions, refer to the [PeopleSoft Employee Self-Service Guide](#)

Note: you can use the links in the roadmap to quickly access training materials.



*If your log in does not work, try clearing browser cache ([Clearing Cache Job Aid](#)). If still not resolved, contact your district's IT department