



Always Innovating

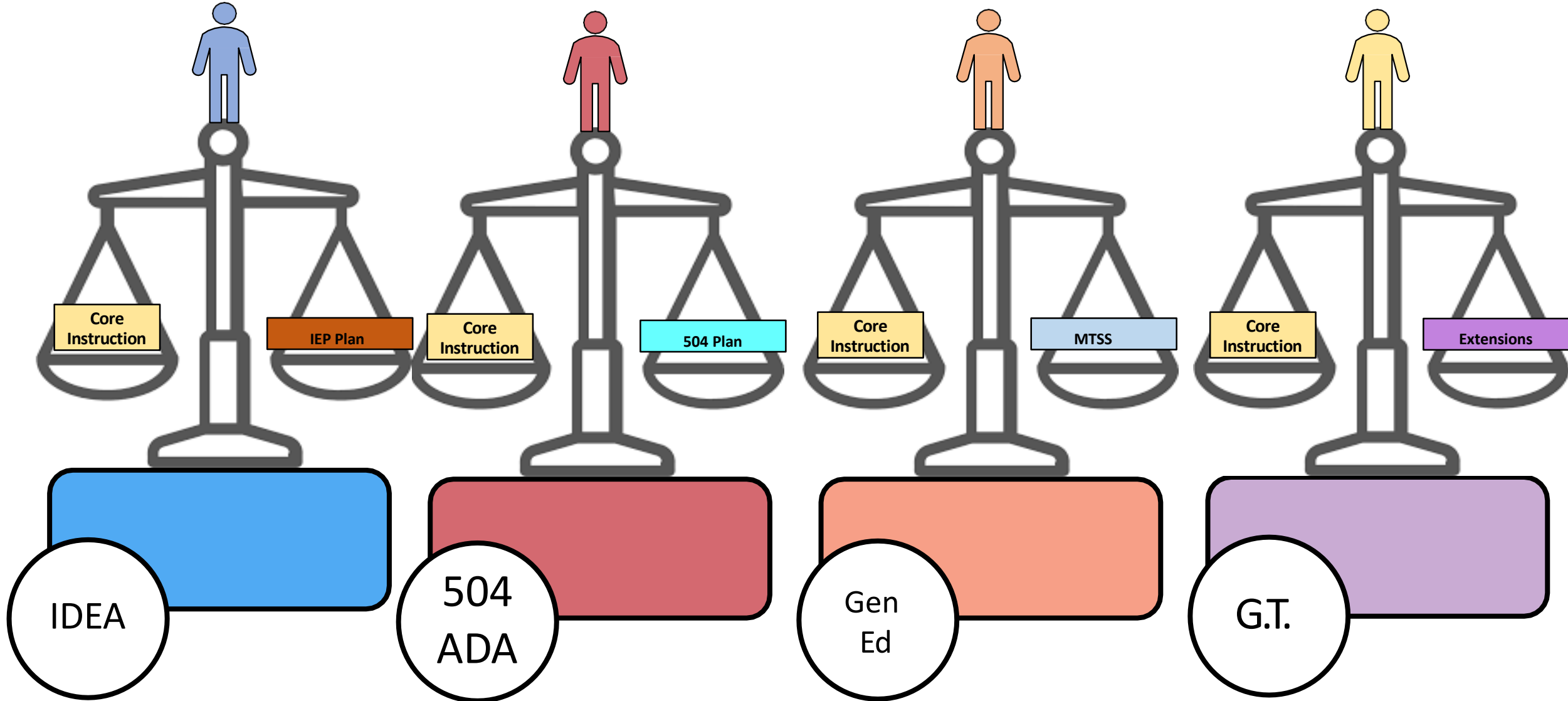
**South
Texas ISD**

RIO GRANDE VALLEY | GRADES 7-12

STISD Child Find- Special Education

2023-2024

Equitable Supports



Child Find

Districts
Must
Annually:

Identify and locate

Notify persons &
parents/guardians

Do you have concerns about your child's development?



Multi-Tiered Systems of Supports (MTSS)

“MTSS is a prevention framework that organizes building-level resources to address each individual student’s academic and/or behavioral needs within intervention tiers that vary in intensity.”

-Center on Response to Intervention at American Institutes for Research (2014)



TEC 26.0081



Each school year, school districts must notify the parent of each child who receives assistance from the school district for learning difficulties, including intervention strategies that the school district provides to the child.

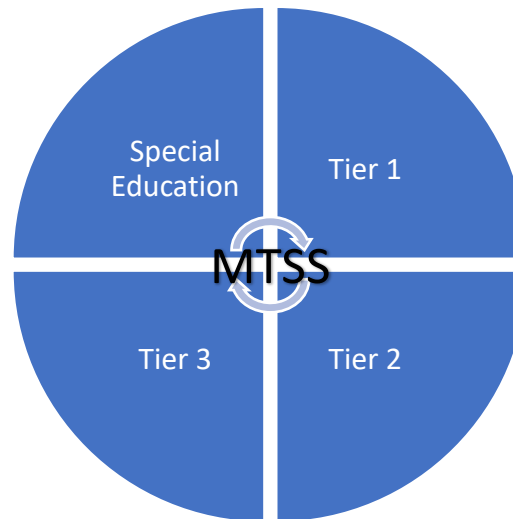
MTSS and Special Education

MTSS should be provided through the collaborative efforts of general and special education.

- Students with disabilities should have access to all tiers in MTSS.

MTSS, if done with fidelity and using evidence-based interventions, can provide useful data about the level of support a student needs.

- If a student is responding positively and closing the gap between their performance and their same aged peers, the intervention is succeeding and the student probably is not a student that would need the specially designed instruction of special education.
- If a student is not responding sufficiently, or closing the gap between their performance and their peers' performance, the student may be a student with a disability and a need for special education services.



Special education means...

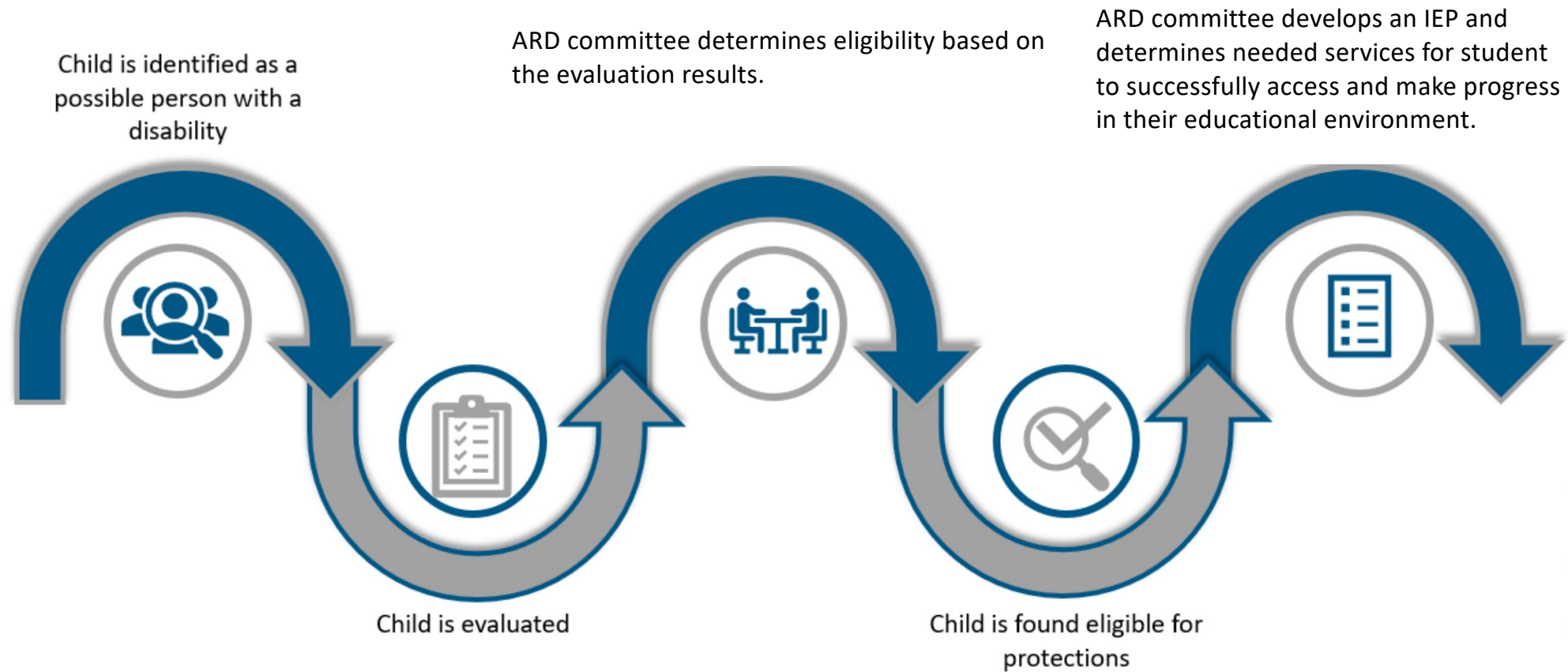
specially-designed instruction, at no cost to the parents, to meet the unique needs of the child with a disability, including instruction conducted in the classroom, in the home, in hospitals and institutions, and in other settings; and instruction in physical education.

Specially-designed instruction means...

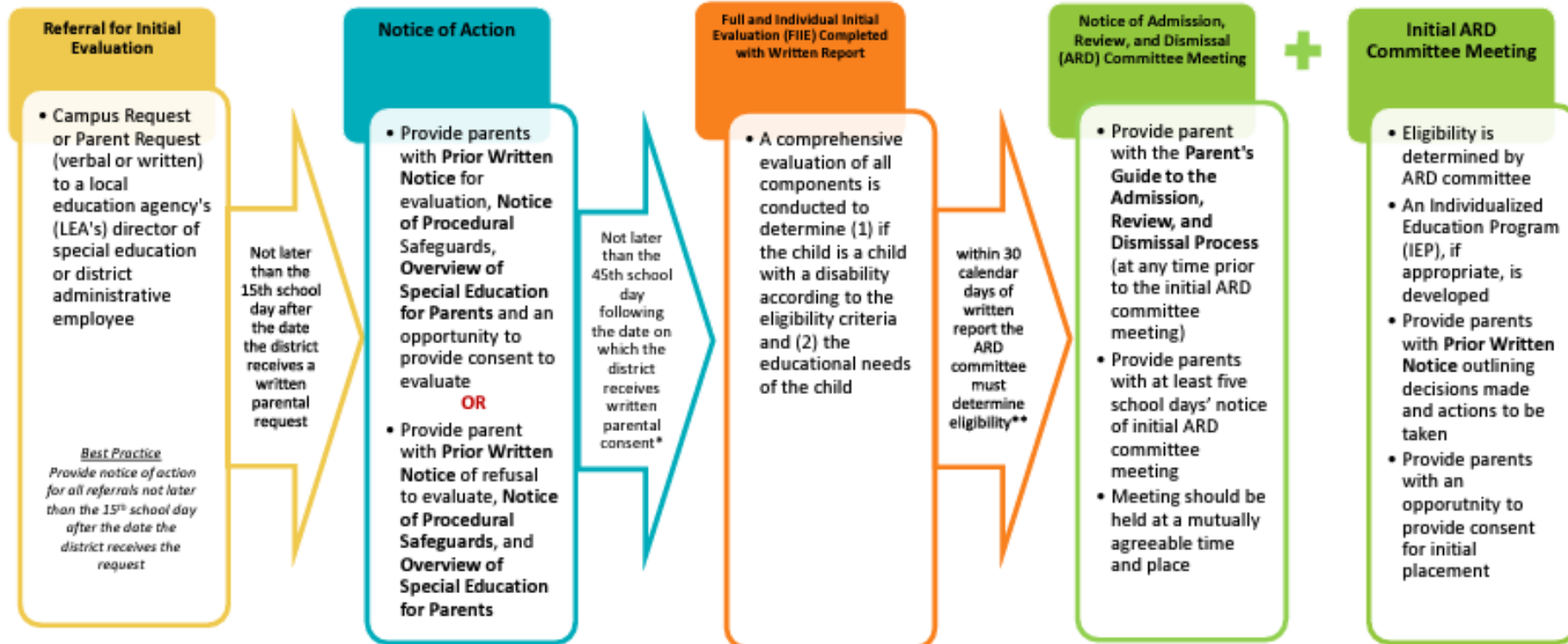
means adapting, as appropriate to the needs of an eligible child under the Individuals with Disabilities Education Act, the content, methodology, or delivery of instruction:

- To address the unique needs of the child that result from the child's disability; and
- To ensure access of the child to the general curriculum, so that the child can meet the educational standards within the jurisdiction of the local educational agency (LEA) that apply to all students.

Identification and Eligibility



Special Education Initial Referral Timeline



*If the student is absent three or more days during the evaluation period, then the evaluation timeline is extended by the number of days absent.

**If consent is obtained at least 35 but less than 45 school days before the last instructional school day, then the evaluation must be completed and the written report must be provided to parent not later than June 30 of that year.

**If the 30th calendar day falls within the summer when school is not in session, then the initial ARD committee meeting must determine eligibility by the first school day of the following school year. If consent is received at least 35 but less than 45 school days prior to the last instructional day of the school year, then the initial ARD committee must determine eligibility by the 15th school day of the following school year.

**Unless the initial evaluation indicates that the student will need extended school year services that summer, then the ARD committee must determine eligibility as promptly as possible.



Who to contact...

- Campus Principal
- Campus Counselor (s)
- Special Programs Director- Dr. Brenda De La Garza,
brenda.Delagarza@stisd.net

13 Disabilities under IDEA in Texas



- Autism
- Deaf/Hard of Hearing
- Deaf-Blindness
- Emotional Disturbance
- Intellectual Disability
- Multiple Disabilities
- Non-Categorical Early Childhood
- Orthopedic Impairment
- Other Health Impairment
- Specific Learning Disability
- Speech Impairment
- Traumatic Brain Injury
- Visual Impairment

Want to learn more?



For more information, you can contact SPEDTex. They provide information and resources that can help you understand disabilities, your rights, and the school's responsibilities under the Individuals with Disabilities Education Act (IDEA).



Resources

- <https://spedsupport.tea.texas.gov/>



- https://fw.escapps.net/Display_Portal?destination=/



THE TEXAS LEGAL FRAMEWORK
for the Child-Centered Special Education Process

- <https://www.parentcenterhub.org/specific-disabilities/>



Questions

