



BURY

GRAMMAR SCHOOL

WORKING FOR US



DO YOU HOLD THE KEY TO CHANGE
A LIFE THROUGH EDUCATION?

BGS STAFF BENEFITS



Pension scheme

BGS offers a generous employer pension contribution.



Lunch allowance

Hot or cold lunches provided in our canteen.



Fee remission

Up to 50% school fee remission for permanent members of staff.



Cycle scheme

Tax savings of at least 25% on bikes and accessories.



Corporate eye care scheme

Specsavers eye tests, and a contribution towards glasses if required.



Counselling service

Free, 24-hour, confidential counselling service available.



Free onsite parking

Free onsite parking for all employees across the whole campus.



Free online training courses

Over 200 online TES training courses from 'phonics' to 'online safety'.



Free use of gym & pool facilities

Use of onsite gym and pool facilities at selected times for staff.



Progression & Development

Opportunities for continuous professional development.



Wellbeing benefits

Friendly staff rooms and a warm and supportive leadership team.



Refreshments provided in all staff rooms

Tea, coffee and biscuits provided in all staff rooms.

WHY WORK FOR BGS

Bury Grammar School, situated in the heart of Bury, Greater Manchester, is a leading UK school and one of the oldest schools in the country. We enjoy being a warm, welcoming and forward-looking school which focusses on quality, tradition and innovation. The school of first choice for pupils, parents and staff in the area, we view Bury Grammar School's history with pride and its future with optimism.



Our School is an independent, selective, day school for girls and boys aged 3 to 18, which combine a strong tradition of academic excellence with the best in modern educational practice. The School has a long and rich history of excellence extending back more than 450 years and our staff, pupils and alumni are proud of the School's long-standing traditions. Our modern, inclusive School community welcomes pupils and staff from different faiths and cultures. It is the blend of the School's traditions along with our modern ethos that is a source of great enrichment for the whole community and is what makes the School so special.



Bury Grammar School is an all-through school where every pupil is well-known, and an ethos of high standards permeates every stage. The journey begins in primary where firm foundations and expert care give our pupils the best possible start in life. Our Senior School is unique and offers the best of both worlds: boys

and girls are taught separately and benefit from tailored single sex pastoral care. Outside the classroom, girls and boys enjoy a coeducational extra-curricular programme and get to know each other. The result is confident, accomplished young people. Sixth Form represents the culmination of the skill and confidence which a BGS education gives and is the best possible preparation for life beyond school.

The School is led by our Principal, Jo Anderson, who is supported by a strong and dynamic Senior Management team and dedicated Board of Governors. We are a member of the Headmasters' and Headmistresses' Conference (HMC) and have been rated 'excellent' by the Independent Schools Inspectorate (ISI). One of our key strategic objectives is to maintain, recruit, nurture and develop first class teaching and support staff. You can be sure that as an employer we are focused on creating an outstanding workplace for all our staff so that we can attract, retain and engage talented individuals who have a desire to transform the lives of others.

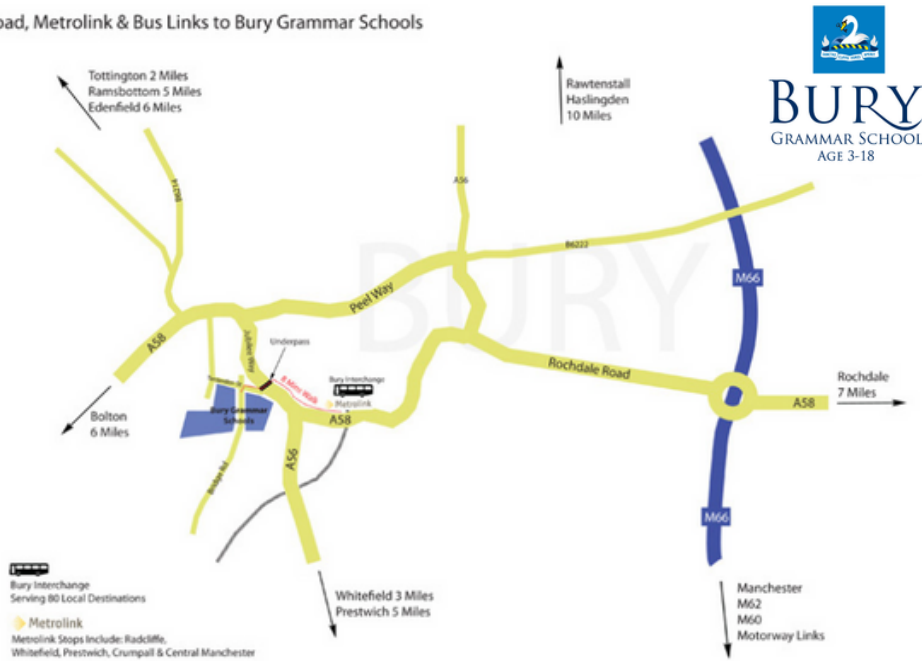


A successful education is very much about team work and every member of staff at Bury Grammar School recognises that together we have the opportunity to change our pupils' lives. Whether this is part of our fantastic Catering team who provide our pupils with nutritious meals, our dedicated Estates team who maintain our beautiful grounds or as a member of our inspiring Teaching staff, everyone has an important part to play.

Join BGS and make a difference.

LOCATION AND AMENITIES

Road, Metrolink & Bus Links to Bury Grammar Schools



- Excellent transport links – metro and bus routes, good motorway links.
- Leafy suburb of Manchester with lots of accessible green spaces.
- World famous market.
- Shopping centre with leading high street brands.
- Good recreational facilities.



WHAT TO DO NEXT

Click here to read more



All our vacancies, teaching and support staff, are advertised on the 'working for us' page of our school website:

www.burygrammar.com/our-people/working-for-us

Safer Recruitment

Bury Grammar School operate an equal opportunities policy, and are committed to safer recruitment and safeguarding our pupils. Any appointment will be subject to a clean Enhanced DBS Certificate and satisfactory references.

If you have any questions regarding working at Bury Grammar School please contact our HR team who will be happy to assist.

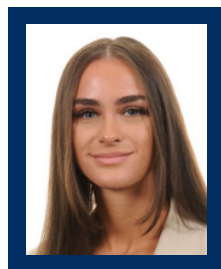
MS ILONA LEWANDOWSKI

HR Advisor



MISS CAITLIN MOLLOY

HR Administrator



Email: vacancies@burygrammar.com

Telephone: 0161 696 8600



@Bury Grammar School



@burygrammar



@Bury Grammar School



@Bury Grammar School

BURY
GRAMMAR SCHOOL

WHAT OUR PUPILS, PARENTS AND STAFF SAY ABOUT OUR SCHOOL

- Our community is what makes Bury Grammar School (BGS) such a special place.
- From our sparky and engaged pupils, our talented and committed staff, to our supportive and friendly parents, BGS is an outstanding school.
- Not only academically outstanding, but also second to none in our forward-thinking and modern approach to pastoral care and life.
- An ambitious school with an uplifting, positive and life-affirming ethos.
- We believe utterly in the transformative power of education and we always have high aspirations for our young people.
- But don't take our word for it, please see what our pupils, staff and parents say...



BURY

GRAMMAR SCHOOL

TEL: 0161 696 8600

WWW.BURYGRAMMAR.COM

Bury Grammar School, Tenterden Street,
Bury, BL9 0HN

