

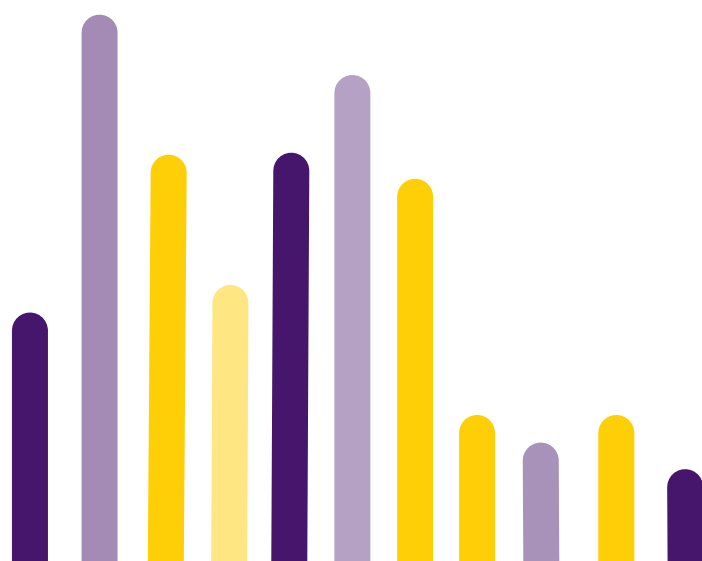


NORTH
KANSAS CITY
SCHOOLS
e s t . 1 9 1 3



PARENT HANDBOOK

North Kansas City High School 2023-2024



Official Board of Education policies are available at school offices and on the district website at nkcschools.org.

North Kansas City School District

North Kansas City High School
Parent and Student Handbook

2023-2024

Table of Contents

PART A: NORTH KANSAS CITY HIGH SCHOOL INFORMATION

NKCHS TELEPHONE NUMBERS-----	3
NKCHS SUPPORT/RESOURCE TELEPHONE NUMBERS -----	3
ADMINISTRATION TEAM -----	4
LETTER FROM THE PRINCIPAL -----	5
NKCHS MISSION STATEMENT -----	6
NKCHS VISION -----	6
ACADEMIC CALENDAR-----	7
A+ SCHOOLS PROGRAM -----	8
NORTH KANSAS CITY LAPTOP PROGRAM -----	9
NORTH KANSAS CITY HIGH SCHOOL MTSS PROGRAM -----	10
ATTENDANCE AND MAKE-UP WORK-----	11
STUDENT CONDUCT -----	12
SCHOOL PRACTICES -----	16
LIBRARY MEDIA CENTER-----	18
ACTIVITIES/ATHLETICS -----	19
ELIGIBILITY INFORMATION -----	23
HONOR ROLL, GRADE POINT AVERAGE, CLASS RANK -----	25

PART B: DISTRICT POLICIES

NKCHS Telephone Numbers

<i>Contact Information</i>	<i>Phone Number</i>
Main Office:	321-5310
Activities Office:	321-4508
Fax Number:	321-5311

NKCHS Support/Resource Telephone Numbers

<i>Contact Information</i>	<i>Phone Number</i>
A+ Program: Jessica Byers	321-4961
Shelli Copas – Counselor (A-C & HAW)	321-6887
Hailey Klein – Counselor (D-K & PAH)	321-4187
Eli Sobhani – Counselor (Q-Z & DIT)	321-6720
Martha Devries – Counselor (L-P & BLE)	321-4053
Mitsi Nessa – IB Diploma Program Coordinator	321-6584
Dr. Chad Lower – IB Career-Related Coordinator	321-5805
Marcus Myers: Gifted Resource Specialist	321-5586
School Resource Deputy Kerekes	321-6317
School Resource Officer Smith	321-5794
Registrar/Student Records – Tabitha Wano	321-4053
Community Resource Specialist - Jesse Tyler	321-6272
School Psychologist - James Dunn	321-6365
	321-6317
	321-4517

Administration Team

<i>Principal</i>	<i>Dr. Keith Jones</i>
Assistant Principal / Activities Director	Mr. David Garrison
Assistant Principal – Students D-K & PAH	Dr. Hawar Khalandi
Assistant Principal – Students Q-Z & DIT	Mr. Theo Fundermann III
Assistant Principal – Students A-C & HAW	Mr. Leon Douglas
Assistant To The Principal – Students L-P & BLE	Ms. Kara King



NKCHS MISSION STATEMENT

North Kansas City High School will establish a supportive learning community which fosters creativity and curiosity and promotes critical thinking. North Kansas City High School will create a challenging learning environment which encourages effective communication and compassion and that develops positive contributors to our global community.

#NorthtownTRUE

NKCHS VISION

North Kansas City High School: A learning community where we appreciate and foster civility and success for all.

North Kansas City High School students will demonstrate:

#NorthtownTRUE

T = Trust

R = Responsibility

U = Unity

E = Empowerment

Trust

- Excellent citizenship and sportsmanship is emphasized and expected
- Have the courage to do the right thing
- Be honest and operate with academic integrity

Responsibility

- Be on time to school and to each class
- Dress appropriately by following the dress code detailed in district policy
- Be accountable for your words and actions
- Deal peacefully with anger, insults, and disagreement
- Accept responsibility for your own actions- don't blame others carelessly

Unity

- Forgive others
- Be kind
- Stand up to bullying
- Operate on a principle of friendliness with everyone at NKCHS

Empowerment

- Use technology appropriately
- Avoid public displays of affection
- Good citizens of a respectful school community make safe and healthy choices by avoiding the use of tobacco, alcohol, and drugs

2022-2023 Academic Calendar



2023-24 Academic Calendar

170 Student Attendance Days
 186 Teacher Contract Days (184 + 2*)
 *2 days = 15 hours for conferences

0 July 2023							0
Su	Mo	Tu	We	Th	Fr	Sa	
							1
2	3	4	5	6	7	8	
9	10	11	12	13	14	15	
16	17	18	19	20	21	22	
23	24	25	26	27	28	29	
30	31						

19 January 2024							20
Su	Mo	Tu	We	Th	Fr	Sa	
			3	4	5	6	
7	8	9	10	11	12	13	
14	15	16	17	18	19	20	
21	22	23	24	25	26	27	
28	29	30	31				

8 August 2023							14
Su	Mo	Tu	We	Th	Fr	Sa	
			1	2	3	4	5
6	7	8	9	10	11	12	
13	14	15	16	17	18	19	
20	21	22	23	24	25	26	
27	28	29	30	31			

19 February 2024							20
Su	Mo	Tu	We	Th	Fr	Sa	
					1	2	3
4	5	6	7	8	9	10	
11	12	13	14	15	16	17	
18	19	20	21	22	23	24	
25	26	27	28	29			

19 September 2023							20
Su	Mo	Tu	We	Th	Fr	Sa	
					1	2	
3	4	5	6	7	8	9	
10	11	12	13	14	15	16	
17	18	19	20	21	22	23	
24	25	26	27	28	29	30	

15 March 2024							16
Su	Mo	Tu	We	Th	Fr	Sa	
					1	2	
3	4	5	6	7	8	9	
10	11	12	13	14	15	16	
17	18	19	20	21	22	23	
24	25	26	27	28	29	30	31

20 October 2023							21
Su	Mo	Tu	We	Th	Fr	Sa	
1	2	3	4	5	6	7	
8	9	10	11	12	13	14	
15	16	17	18	19	20	21	
22	23	24	25	26	27	28	
29	30	31					

21 April 2024							22
Su	Mo	Tu	We	Th	Fr	Sa	
	1	2	3	4	5	6	
7	8	9	10	11	12	13	
14	15	16	17	18	19	20	
21	22	23	24	25	26	27	
28	29	30					

17 November 2023							19
Su	Mo	Tu	We	Th	Fr	Sa	
			1	2	3	4	
5	6	7	8	9	10	11	
12	13	14	15	16	17	18	
19	20	21	22	23	24	25	
26	27	28	29	30			

18 May 2024							18
Su	Mo	Tu	We	Th	Fr	Sa	
			1	2	3	4	
5	6	7	8	9	10	11	
12	13	14	15	16	17	18	
19	20	21	22	23	H	25	
26	M	M	M	31			

14 December 2023							14
Su	Mo	Tu	We	Th	Fr	Sa	
					1	2	
3	4	5	6	7	8	9	
10	11	12	13	14	15	16	
17	18	19	H	21	22	23	
24	25	26	27	28	29	30	
31							

0 June 2024							0
Su	Mo	Tu	We	Th	Fr	Sa	
							1
2	3	4	5	6	7	8	
9	10	11	12	13	14	15	
16	17	18	19	20	21	22	
23	24	25	26	27	28	29	
30							

78 1st Semester Totals 88

92 2nd Semester Totals 96

July
 18-21 Summer Academy

August
 3 Leadership Team Workshops
 7-11 New & Beginning Teacher Orientation
 14 Teacher Workday (all day) - *Elementary and Secondary*
 15 Building Based Workshop (all day) - *Elementary*
 Prof. Development, District (AM)/Building (PM) - *Secondary*
 16 Prof. Development, District (AM)/Building (PM) - *Elementary*
 Building Based Workshop (all day) - *Secondary*
 17 Teacher Workday (all day)/ Back to School Night
 18 Convocation/District Workshops (AM)
 Teacher Workday (PM)
 21 Teacher Workday, No School PK-12
 22 First Day of School PK-12

September
 4 Labor Day, No School PK-12
 22 Professional Development TBD, No School PK-12

October
 6 No School PK-12
 9 Professional Development TBD, No School PK-12

November
 20 Professional Development TBD, No School PK-12
 21 Teacher Workday, No School PK-12
 22-24 Thanksgiving Break, No School PK-12

December
 20 Half Day PK-12
 21-29 Winter Break, No School PK-12

January
 1-2 Winter Break, No School PK-12
 3 Teacher Workday, No School PK-12
 4 Second Semester Begins
 15 Martin Luther King, Jr. Day, No School PK-12

February
 16 Professional Development TBD, No School PK-12
 19 Presidents' Day, No School PK-12

March
 22 Teacher Workday, No School PK-12
 25-29 Spring Break, No School PK-12

April
 19 Professional Development TBD, No School PK-12

May
 24 Last Day of School, Half Day PK-12
 27 Memorial Day, No School PK-12
 28-30 Make Up Days, If Needed

Key

	First/Last Day of School		No Student Attendance/Teacher Workday		Student Half Day
	Make Up Day		No Student or Teacher Attendance		

Board Approved - 1/17/2023

Updated 4/04/2023

A+ Scholarship Program

The A+ Scholarship Program provides scholarship funds to eligible graduates of A+ designated high schools who attend a participating public community college or vocational/technical school.

Background

As part of Senate [Bill 380 \(Section 160.545\)](#), The Outstanding Schools Act of 1993, the Missouri Department of Elementary & Secondary Education instituted the A+ Schools Program. (The Missouri Department of Higher Education began to oversee the funding in the school year 2010-11 and refer to it as the A+ Scholarship Program.) Funding for the Student Financial Incentives portion of the A+ Scholarship Program is the sole responsibility of the State of Missouri. The A+ Scholarship Program provides these educational incentives subject to legislative approval.

In April 1997 the three high schools in the North Kansas City School District (North Kansas City High School, Oak Park High School and Winnetonka High School) received A+ designation. Our district was the first multi-high school district in the state where all high schools were designated as A+ Schools Program schools. The district was the first district in the Kansas City metro area to receive A+ designation. Staley High School opened as an A+ designated school in 2008. Each year thousands of hours of volunteer tutoring are completed, and graduating seniors can begin a post-secondary education without concern of how to pay for their education. At present, the value of the A+ scholarship is approximately \$6,200 for indistrict high schools.

A+ Requirements

- Be a U.S. citizen or permanent resident.
- Enter into a written agreement with your high school prior to graduation.
- Attend a designated A+ high school for 3 years prior to graduation.
- Graduate from an A+ designated high school with an overall grade point average of 2.5 or higher on a 4.0 scale.
- Have at least a 95% attendance record overall for grades 9-12.
- Perform at least 50 hours of unpaid tutoring or mentoring, of which up to 25% may include job shadowing prior to graduation.
- Maintain a record of good citizenship and avoid the unlawful use of drugs and/or alcohol while in grades 9-12.
- Have achieved a score of proficient or advanced on the Algebra I end of course exam, or a higher level DESE approved end-of-course exam in the field of mathematics. The State also provides an alternative to meet this requirement with a combined ACT math score and high school GPA scale.

See your counselor or A+ Coordinator for A+ opportunities.

NORTH KANSAS CITY LAPTOP PROGRAM

1:1 Computer Deployment

*North Kansas City Schools embraces technology as a tool for learning. Each high school student is equipped with a laptop to stay connected to their learning 24/7. By using or taking possession of a laptop owned by North Kansas City Schools, a user and their parents/guardians are agreeing to comply with these Terms of Laptop Use Agreement, *NKCS District Technology Usage Policy EHB & EHB-AP1, and the expectations detailed in the Student/Parent Laptop Handbook.*

**District Technology Usage Policy found on the North Kansas City Schools district website.*

At no time should students load or download software. Additional software may be loaded based on course enrollment.

Filter and Virus Protection

Content filtering and virus protection have been installed on the laptop. Content filtering will block sites not approved by the district while on or off school campus. Students are encouraged to use district provided email for school related communications. Email accounts outside of the district provided account will not be opened for the students.

Repairs must be completed by district technology staff. Students should not attempt to repair the laptop or take it to an outside repair center.

A Technology Risk Management Program is available for a \$50 annual payment. **This must be purchased prior to or at the time of receiving a laptop or any time after an inspection, but prior to any damage incurred.**

North Kansas City High School Multi-Tiered System of Support (MTSS) Program

Purpose Statement and Program Goals

The purpose of the North Kansas City High School MTSS Program is to support student graduation rate and increase subgroup performance. These goals of the MTSS Program will be accomplished by:

- Focusing on the whole student (academics, behavioral, social and emotional)
- Aligning the NKCHS feeder pattern with common terminology to enhance student understanding
- Assisting students with transition to high school

- Engaging students in social and emotional curriculum
- Creating processes to detect early warning signs of students in need

MTSS (Multi-Tiered System of Support)

Advisory/MTSS Schedule				
MONDAY	TUESDAY	WEDNESDAY	Thursday	FRIDAY
Advisory	MTSS	MTSS	MTSS	MTSS

Why MTSS:

At North Kansas City High School, we believe all students can achieve high levels of learning and we are committed to providing the resources and support necessary to ensure this happens. We also know that all students do not learn in the same way, at the same speed, and/or possess all the prerequisite skills needed to ensure academic success. Therefore, ensuring that all students learn at high levels will require a systematic process that guarantees every child has access to grade-level essential curriculum AND the additional time and support needed to learn.

Dr. John Hattie is an educational researcher who has conducted the most extensive research ever done on the factors that affect student achievement. His work has included research from over 80,000 educational studies and more than 300 million students. Through his research he identified 250+ factors that affect student achievement. A high quality Multi-Tiered System of Support (MTSS) / Response to Intervention (RtI) was determined to be the 4th highest of all factors that affect student achievement. MTSS/RtI can be correlated to an average of 3.23 years of academic growth for students in one academic year. It is for this reason that we focus our efforts on creating a high-quality system of support for our students.

Academic Support:

Our end goal is to provide academic support ‘by student, by standard’. “Students in the same intervention should need assistance on the exact same essential standard, learning target, or behavior” (DuFour et.al, 2016, p.169).

ATTENDANCE AND MAKE-UP WORK

ATTENDANCE

North Kansas City High School adheres to the district’s attendance policy located in part B of this handbook. It is the responsibility of the student’s guardian to report the reason for each absence occurrence when the student is not in attendance.

Upon arrival or departure to or from school, students must sign in or out at the Main Entrance attendance office.

TRUANCY AND UNEXCUSED ABSENCES

Unexcused full day, partial day and individual block absences will be monitored by attendance staff. Consequences will be issued by school administration for unexcused absences. Excessive unexcused absences may result in a referral to Clay County Family Services for chronic educational neglect.

TARDY

A student is considered tardy if they aren't in their class when the bell rings. Students are expected to arrive on time to all classes. Consequences will be issued by school administration for excessive tardies.

EXCESSIVE ABSENCES

Verified and Unexcused full day and partial day absences will be monitored by attendance staff. Excessive absences may result in a referral to Clay County Family Services for chronic educational neglect.

STUDENT CONDUCT

NORTHTOWN'S DISCIPLINE PHILOSOPHY

The purpose and goal of discipline is to modify student behavior via learned experiences. Student success at NKC High School is dependent upon the relationships built between students, staff, guardian, and community. The staff of NKC High School will be consistent in the procedure they follow for all students. Section B of this handbook and Section JG of Board of Education Policies will determine consequences given to students.

CELL PHONE POLICY AND PROCEDURE

PURPOSE

At North Kansas City High School, our goal is to create a warm, welcoming, safe, academically focused environment for students. Student cell phone use at school has been identified as a tremendous distraction to meeting that goal. And, with the deployment of district issued MacBooks, cell phones are unnecessary for academics throughout the school day. The building practice outlined below has been developed in coordination with NKC Board Policy [JG-R- Technology Misconduct](#). You may also reference Board of Education Policies [EHB – Technology Usage](#) and [EHBA – Use of Personal Electronic Devices for Instructional Purposes](#) for more information.

Boundary

- **From 7:43am-2:40pm, student cell phone use is prohibited** during class time (Bell to bell).
 - Student cell phones may **NOT be seen/heard/accessed** for any reason during class time.
- If students bring cell phones to school, they must be concealed and secured in their locker or personal bag/backpack.
- **Cell phones can only be used before school, after school, during passing period, and lunch.**

What about Necessary Student/Family Communication?

- Guardians should **contact the front office to communicate messages** to students or families may **contact students through district email**. Students have frequent access to district email through their district issued MacBook.
- Our school has over 100 active landline phones that can be made available for necessary student communication.
- **Families** should **NOT call, text, or video-conference** students during class time.
 - In order to protect instructional time, please limit student contact/communication to only important/urgent messages
- Students will be able to check their message in-between classes, before and after school, and during their lunch period.

Consequences for Violations

Progressive consequences will accumulate per student, per year.

<i>1st Offense</i>	<i>2nd Offense</i>	<i>3rd Offense</i>	<i>4th and Beyond</i>
<ul style="list-style-type: none">• Confiscation• Parent Contact• Student Pickup	<ul style="list-style-type: none">• • Confiscation• Parent Contact• Parent Pickup	<ul style="list-style-type: none">• • Confiscation• Parent Contact• Detention• Parent Pickup	<ul style="list-style-type: none">• Confiscation• Parent Meeting• Suspension• Parent Pickup

*If student refuses to turn in their cell phone for a policy violation the student will be subject to further disciplinary action.

IN-SCHOOL SUSPENSION

Students work on academic tasks in a supervised classroom on campus. Students are not allowed to utilize the passing period and lunch will be delivered to them.

LOSS OF PRIVILEGE

There are many privileges for students who attend North Kansas City High School. It is our philosophy that these privileges are earned through appropriate behavior and attendance. When a student is issued a loss of privilege, he/she will be unable to utilize some or all privileges that are available. These privileges may include, but are not limited to, student parking, student-initiated hall passes, and attendance at, and/or participation in, extracurricular activities. Students who do not comply appropriately with a Loss of Privilege may be given additional days of Loss of Privilege and/or suspension.

OUT-OF-SCHOOL SUSPENSION

The primary purposes of suspension should be to temporarily remove the offender from the school community, assist in the rehabilitation of the offender, and to deter future disciplinary problems. Recognizing that we are working with individuals, all cases must be considered separately, and all factors weighed carefully. **Suspended students cannot attend school functions or be on school property while suspended. Failure to comply may lead to an arrest by School Resource Officer or Clay County Deputy.**

- Make-up Work Procedure for OSS students: Make-up work during out-of-school suspension is allowed but is the responsibility of the student to secure. Students who are suspended must secure work from each teacher via Canvas. The work provided to you is due immediately upon return.

STANDARD OF DRESS

School dress should not disrupt the educational process. The school reserves the right to restrict any student from attending school or after-school activities when their dress or appearance creates a health hazard or distraction. Students have an obligation to themselves and to their school to dress in a manner that reflects favorably upon the school and community.

Examples of inappropriate dress include but are not limited to the following: bare midriffs, bare backs, and halter tops are not appropriate for school. Shorts and skirts should be of appropriate length for the school setting. Wearing apparel with messages that are considered by school personnel as obscene or offensive, or that carry references to sexual connotations, drugs, alcohol or tobacco will not be tolerated. Students who wear inappropriate clothing or accessories will be required to make modifications. Failure to comply may result in disciplinary action. The administration has a right to amend this code without prior knowledge to students.

TARDY

Students are expected to arrive on time to all classes, as well as return from lunch on time. Consequences will be issued for excessive tardies.

TRUANCY

A student absent without the consent of his/her parent/guardian is truant. A student at school but not in their assigned location is also considered truant. Repeated truancy will be cause for disciplinary action (suspension, expulsion, and/or legal action). An automated phone messenger system will be alerted to contact families when truancy exists. A juvenile may be referred to Clay County Family Services for chronic truancy concerns.

SCHOOL PRACTICES

ALTERNATIVE EDUCATIONAL OPPORTUNITIES

Students requiring additional supports not embedded in the traditional educational program may find success in an alternative placement. There are often waiting lists for those programs. Please visit with your counselor to find out about the referral process or to learn more about alternative options.

DAMAGES TO NKCHS

Students are responsible for all damages to the building or property which they might cause, whether accidental or intentional. In the event of damages, the school will repair the damages and parents will be notified of expenses.

GUIDELINES FOR SCHOOL DANCES

No tickets are sold at the door. All tickets must be purchased in advance. Students and guests must present school ID for admittance. Dances conclude at 10:00pm unless otherwise noted. Transportation must be provided for all students within 15 minutes of the end of the dance.

NOTE: Students with outstanding obligations or not considered to be in good standing will not be allowed to attend dances. A current North Kansas City High School student may be permitted to bring one guest not enrolled at North Kansas City High School if:

- Only students with 90% accumulative attendance will be eligible to attend dances
- NKCHS student is in good standing
- Form is filled out completely and returned to Attendance Office by due date
- Permission granted to purchase tickets after successful clearance by SRO/SRD and/or sending school

GUIDANCE & COUNSELING

The primary purpose of the counselors is to assist students in making good educational decisions regarding their current and future academic and career choices. Counselors may also help students work through personal concerns. In addition, the NKCHS counselors assist teachers and parents in working with students to promote growth opportunities.

HEALTH SERVICES

If a student becomes ill in school, he/she should report to the nurse. **STUDENTS MUST NOT LEAVE THE BUILDING BECAUSE OF ILLNESS WITHOUT PROPER AUTHORIZATION.** If the nurse is not in, students are to report to the main office. If students require medication during the school day, it should be given to the nurse to dispense. Refer to Medication Guidelines in Part B of handbook for specifics.

LOST AND FOUND

Articles found in classrooms and halls are turned in to the Security Office in the B-Wing and are placed in the "LOST AND FOUND." It is your responsibility to check for lost articles in the office. Articles may be claimed by making the proper identification. Please mark all items of clothing and book bags with the student's name. **Do not leave personal items unattended. Unclaimed items will be donated to charity.**

LUNCH ACTIVITIES

Student behavior in the cafeteria should be based on courtesy and cleanliness. Food should not be taken beyond the cafeteria or courtyard area. **No fast food or drinks may be delivered to the building.**

POWERSCHOOL PARENT PORTAL

All parents will be provided a username and password to access their child's most current academic progress. This online resource can be accessed through the district website: www.nkcschools.org. Please contact our main office for more information at 816-321-5310.

SCHOOL SAFETY

In order to provide a safe environment for students and staff, exterior entrances to NKCHS will be monitored. All visitors are required to enter through the **Main entrance (620 E 23rd Ave) and sign in via the 'Raptor' system**. The Raptor system requires a valid ID to be scanned to issue a visitor's pass. A Clay County Deputy, North Kansas City Police Officer and Campus Supervisors are on campus full time to serve students and assist school officials with building safety and supervisory issues. If you have any information that needs to be reported immediately, call 816-321-5310.

SEARCH AND SEIZURE

School officials of the North Kansas City School District may by law may search students, their lockers, book bags, purses, or automobiles when there is a factual basis or reasonable suspicion for the search. NKCHS works closely with the Clay County Sheriff's Office and NKC Police Department in conducting random searches for illegal substances on school property. A drug dog will conduct random searches of classrooms, student belongings, and automobiles.

STUDENT ACCIDENT INSURANCE

The school district does carry accident insurance on students. Literature is made available to the parent and/or guardian of every child at the time of enrollment. It is recommended that the provisions of the policy be studied carefully to avoid any misunderstanding about the coverage. The enrollment period is open all year for all students. Any questions or requests for additional information should be directed to the Activities Office at 816-321-4508.

STUDENTS ON CAMPUS

All students must vacate the premises at the end of the school day unless involved in school-related activities. Students who are involved in school-related activities must report to those activities immediately following school. When possible, all students must ride the buses home. Students waiting for rides must be off campus (if not catching rides immediately following school).

STUDENT I.D. CARDS

Students will receive one free student identification card per school year. You will be required to have it with you at all times. You must be able to produce your ID at all times when requested by a Northtown adult. ID cards will be necessary to enjoy student-initiated hallway privileges, library privileges, dances, and other after school activities. If an ID is lost, stolen, or damaged, it is the student's responsibility to secure another one immediately. A replacement fee of \$5.00 will be charged for each new ID obtained.

STUDENT PARKING LOT AND DRIVING PRIVILEGES

Students who drive MUST register for a parking permit. A parking pass is REQUIRED to park in the student lot. Students must present a valid driver's license and proof of insurance before receiving a parking permit. Students who violate driving regulations are subject to disciplinary action and loss of driving privileges. Cars are not lockers. Students are not allowed in the parking lots during school hours.

SAFETY BELT POLICY

All operators and passengers of motor vehicles are required to properly fasten safety belts when driving on school property.

TECHNOLOGY/ INTERNET

The district has a board adopted Technology Usage Policy. Please contact the district technology director or the building principal with questions or concerns. Parents who wish to restrict their student's access to Internet resources should inform the building principal in writing. North Kansas City schools provide networked computer access to the Internet. Internet access will be used for classroom research and to provide reference materials. While security measures are in place to prevent access to inappropriate resources, there are no guarantees. Your student must have a signed Acceptable Use Policy (AUP) on file prior to using a networked computer. **Unauthorized use or abuse of the equipment, software, or information system will result in serious disciplinary response.**

TEXTBOOKS

On the first day of school, bring paper, pens, and pencils. Textbooks will be issued free of charge to students in their classes. Textbooks are on "LOAN" to students. Students are held responsible for all textbooks issued to them. Satisfactory settlement will be required for lost or damaged books. **Your name and your teacher's name must be printed on the inside cover of all textbooks.**

TRANSCRIPTS

Transcripts may be requested in person by visiting the registrar in the main office. A Transcript Release form will need to be signed by parent or student if 18 or older. Please call 816-321-4462 if you have any questions.

VISITOR PERMITS

Parents of students are encouraged to visit school, but visiting pupils from other schools, teenagers, and preschool youngsters are not allowed. Each visitor must secure a visitor's permit from the Main entrance (620 E 23rd Ave) by providing a valid ID (for Raptor, see SCHOOL SAFETY) and must display the permit throughout the visit. No visitors are allowed during the last two weeks of first or second semester.

WEAPONS POLICY

A weapon is defined as any object that is capable of inflicting serious bodily injury. Knives of any size are not allowed, including small Swiss Army Knives. Weapons are strictly forbidden on your persons, book bag, locker, and car or on school property. Anyone found in violation of this policy is subject to arrest and suspension.

LIBRARY MEDIA CENTER

North Kansas City High School students are welcome to utilize the library facilities located in Old Main.

The LMC offers:

- expertise to help explore library users' interests
- eagerness to help users find the perfect book
- individualized assistance with research for personal or academic need
- willingness to discuss personalized due dates for users, based on need
- an online book club with six free books per year and social discussions about the books
- teen programs
- www.nkclmc.weebly.com
- Twitter @nkclmc

HOURS:

MONDAY-FRIDAY

7:30 a.m. – 3:00 p.m.

CONTACT INFORMATION:

Theresa Christal

321-4339

Jessica Thomas

321-6275

Jordyn Nuffer

High School Library

ACTIVITIES/ATHLETICS

NORTH KANSAS CITY
HORNETS

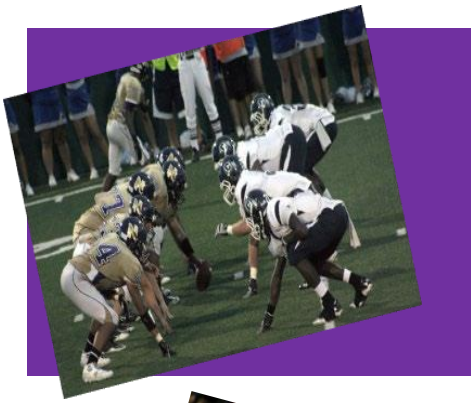
HAVE AN INTEREST?

**WE HAVE A TEAM, CLUB, OR ACTIVITY FOR
YOU.**

**BEING A HORNET MEANS GETTING
INVOLVED!!!**

At North Kansas City High School, we want all of our students to find something outside the classroom that captures their interest. Northtown has

competitive athletic teams, exceptional activities, and clubs for every interest. get involved today and be the best hornet you can be!!!



North Kansas City High School Parent and Student Handbook 19

ATHLETICS

FOOTBALL:	Leon Douglas
VOLLEYBALL:	Tyler Gralheer
BOYS SOCCER:	Jeff Lasswell
GIRLS SOCCER:	Kali Hail
CROSS COUNTRY:	Chris McCullough
BOYS BASKETBALL:	Ed Fritz
GIRLS BASKETBALL:	Xavielle Brown
Boys WRESTLING:	Adrian Doolin
Girls Wrestling:	Jayson Palmgren
BOYS SWIMMING:	Ian Johnston
GIRLS SWIMMING:	Ethan Rose
BASEBALL:	Bubba Dotson
SOFTBALL:	Angeline Kinman
BOYS TRACK & FIELD:	Russell Traphagan
GIRLS TRACK & FIELD:	Chris McCullough
BOYS/GIRLS GOLF:	Joel Peace
BOYS TENNIS	Kyle Cumberland
GIRLS TENNIS:	Kyle Cumberland

ACTIVITIES

BAND:	Carrie Epperson
ORCHESTRA:	Sheree Yoder
VOCAL MUSIC:	Danielle Enriquez-Fowler
HARMONAIRES:	Danielle Enriquez-Fowler
DRAMA:	Lacy cunningham
SCIENCE OLYMPIAD:	Andrea Leonard
SCHOLAR BOWL:	Pat O'Keefe
DEBATE:	Amanda Dolinger
CHEERLEADING	Jenny Nance
DANCE:	Kimber Bouchard
WINTER GUARD:	Christine Mills
Newspaper:	Paul Aubrey
NTV News:	Amanda Dolinger
Sports Broadcasting:	Paul Aubrey
Sports Marketing:	Zach Johnson
Yearbook:	Mary Prichard
Leadership:	Pat O'Keefe, Andrea Taylor, Nichole Unsell

CLUBS

A.L.A.S.:	Joaquin Cuni-Carreno
Anime Club:	Jessica Thomas
CHESS CLUB:	Eric Kleoppel DECA:
Diversity & Multicultural Club	Nichole Unsell
Environmental/Recycling	Chad Lower
Fashion Club	Paola Mondello
FCCLA/ProStart:	FACS Department
FRENCH CLUB:	Tuan Nguyen
GSA:	Michelle Barbieri
INT'L THESPIAN SOCIETY:	Lacy Cunningham
Multicultural Club:	Emilie Metheney, Nicole Unsell
NFL:	Amanda Dollinger
NHS:	Charlotte Gbomina
NTA:	Lacy Cunningham
ROBOTICS:	Louis Breinin
TSA, ACE, GUITAR CLUB:	Louis Breinin
YOUNG PROGRESSIVES:	Paola Mondello
AMERICANS FOR FREEDOM:	Louis Breinin





PARTICIPATION FEE

A student participation fee of \$50.00 will be charged to all students participating in athletics, cheerleading, dance, Science Olympiad, scholar bowl, and debate and forensics during the school year. The maximum charge is \$50.00 per student, regardless of the number of activities a student chooses for participation. A maximum fee of \$120.00 will be charged per family, regardless of the number of students attending NKCHS and participating in activities. Music students will not be charged a participation fee. However, students will pay their solo and ensemble entry fees to participate in music contests. Additionally, students using school-owned music instruments will be assessed a \$20.00 maintenance fee. Students will be expected to pay their own individual and small group entry fees for academic competition. Team and school entry fees will be paid by the school district.

ACTIVITY PASSES

Student activity passes are available for \$40.00. This pass admits the student to all regular season home football, volleyball and basketball games and wrestling meets. The student activity pass does not include admission to tournaments, play-offs or away games. Purchase of the pass results in a savings to the student of approximately \$100. Adult activity passes are available for \$20.00. These passes are good at all regular season high school athletic events in the NKC School District. Admission fees to athletic events are:

ADMISSION FEES

Adult Admission \$ 5.00

Student K-12 with ID \$ 3.00

STANDARDS OF ELIGIBILITY

Participation in interscholastic athletics is a privilege that only can be granted to those who meet the eligibility standards of the school and the state of Missouri. Minimum eligibility standards that students must meet to participate in the activities are listed below:

1. The eligibility rules of the **Missouri State High School Activities Association** must be complied with in full. Coaches should inform athletes of these rules (See By-law 2.3.2, MSHSAA Official Handbook).

2. **Citizenship Standards**-The following standards apply both in practice sessions and contests:
 - a. A student must be a creditable high school citizen as defined by the MSHSAA Official Handbook.
 - b. Any student who is suspended from school will be ineligible during the period of the suspension and until all disciplinary provisions are completed. Any athlete involved in a major suspension (10 days) falls short of being a creditable school citizen and any athlete, so involved, will have a hearing to show cause why he should not be dropped from the current athletic season. This hearing will involve the athlete, parents, coach, activities coordinator, and appropriate principals, if necessary.
 - c. Students must be in attendance at school the day of the activity. Students who are absent all or any part of the day due to unavoidable circumstances may be declared eligible, if prior arrangements are made with the Attendance Office. If a student is absent on a Friday prior to a Saturday activity, the student may be declared eligible if advance arrangements have been made with the activities coordinator. **As a general application, a student must be in attendance at least one-half of the school day to participate in a practice or contest.** Coaches are responsible for enforcement of this policy. Students who are absent any part of the day should have their eligibility cleared in the Attendance Office when they check in or out of school. Questions arising concerning this procedure will be resolved by the assistant principal in charge of attendance, the activities coordinator, and the coach.
 - d. Repeated violations of any school rules may result in the student being ineligible.
 - e. In any instance not specifically covered by the rules of eligibility, the principal may rule a student eligible.
 - f. Teachers in charge of activities may deny the student the privilege of participating if training or practice rules prescribed by the teacher are violated.

3. **Academic Standards**- Each student must be currently enrolled in at least seven courses that offer a total of 3.5 units of credit. A student must have earned 3.5 units of credit the preceding semester in which they were in attendance in high school. The activities coordinator will notify the coach of each sport the names of any student who does not have the required number of units to meet the eligibility requirements.

ELIGIBILITY INFORMATION

ACADEMIC STANDARDS

A student must be enrolled in at least 3.5 units of credits at North Kansas City High School each semester. Dual enrollment in night school can be considered as part of the 3.5 credits necessary.

Any time during the course of a semester you drop below the required seven courses, you immediately become ineligible to compete. To be eligible a student **must** have earned at least 3.5 units of credit the preceding semester. This is equivalent to passing seven courses the prior semester. Summer school courses do count toward the 3.5 necessary credit if the class is a state requirement for graduation.

AGE STANDARDS

A student shall not have reached the age of 19 prior to July 1st preceding the opening of school. If a student reaches the age of 19 on or following July 1st, the student may be considered ineligible for the ensuing school year.

ATTENDANCE AT SCHOOL

A student cannot miss a single class and compete in a school sponsored event on the same day unless excused by a principal. Being absent on Friday would make the student ineligible for the entire weekend, unless a principal excused the absence. Any suspension from school, including inschool suspension, makes the student ineligible to compete in a school sponsored event.

NON-SCHOOL COMPETITION

A student may not compete for North Kansas City High School while also on a non-school sponsored team in the same sport during the high school season. Violation of this rule would result in the athlete becoming ineligible for one year, and the school team being forced to forfeit all games the athlete played in after the violation occurred. A student may participate in non-school competition and on a school team at the same time, provided they are different sports and the student does not participate in both on the same day.

SPORTSMANSHIP STANDARDS

The privilege to be part of an interscholastic athletic team at our school is a true extension of your work in the classroom. We hope you will benefit as much from your athletic experiences as you do from your academic endeavors. A challenge we face annually is striving for good sportsmanship. As a high school athlete, the positive values learned on the playing field now will last a lifetime. Good sportsmanship is expected for North Kansas City High School students. A student will become ineligible for at least one contest if they are ejected from a contest for unsportsmanlike conduct.

PHYSICAL EXAMS

The MSHSAA bylaws state that anyone wishing to participate in athletics **must** have a physical examination which declares them physically fit to participate in athletics **before** they can practice or compete. Physicals are divided into two parts: A) Physical Examination Form, which is completed by a physician, is valid for two years (730 days) and B) Pre-Participation Documentation, which is completed by a parent/guardian, is valid for one year (365 days).

INSURANCE

The school district has purchased a group accident insurance program covering all students, grades K-12. Students are covered by the accident policy while they are participating in school schedules; school supervised and school funded activities, during the regular school term. Students are also covered while they are traveling as a sponsored group in a school assigned car, bus or van operated by a licensed driver over the age of 21 to and from the school and a covered event site. Individual travel is not covered by the policy.

TRANSPORTATION

AWAY EVENTS: All school trips must be made with school approved transportation (e.g., school buses, chartered buses). All students participating in school sponsored activities are expected to ride the school approved transportation to games or inter-school activities with the following exceptions:

1. Students may secure permission to return from inter-school contests with their parents providing that the parent requests such permission from the coach or sponsor. Student participants are not allowed to drive their own cars to away games or school sponsored activities.
2. When leaving from home, students provide their own transportation to away in-district events.
3. For very small groups, the coach or sponsor may transport students in their personal vehicles.

OFF-CAMPUS PRACTICE AND HOME GAME SITES: When practice sites and home games are off campus, a one-way shuttle bus is provided.

1. Students who are allowed to drive to school may provide their own transportation to such practice sites if a signed parent permission slip is on file with the coach.
2. If a student transports another student, a parent permission slip must be on file from both students' parents.

ATHLETIC AND ACADEMIC LETTERING AND AWARD POLICIES

Lettering at North Kansas City High School is a Badge of Honor bestowed on an individual student for outstanding service to their school in some interscholastic sport or in the classroom. It stands as a testament to all that this student reached high standards and is held in high regard among the students and faculty of this school.

The acceptance and wearing of the school letter indicate special responsibilities for the student in the area of citizenship, morals, and social standards. Should a student degrade the school or fellow students in these areas at any time during the student's high school career, the student's letter may be recalled.

To qualify for the North Kansas City High School Academic Letter, a student must have earned a cumulative grade point average of 3.5 or higher (includes distinction points) after four semesters of academic work for sophomores or six semesters for juniors. Students must have maintained and currently have a record of good citizenship.

HONOR ROLL REQUIREMENTS

PRINCIPAL'S HONOR ROLL

Must attain GPA of 4.00 (not including Distinction Points) or higher

HONOR ROLL

Must attain GPA of 3.00 (not including Distinction Points) or higher Must have no grade lower than a C-

Grade Point Average (GPA)

To calculate Grade Point Average (GPA), course grade points are summed and divided by the number of course units completed. For GPA calculations, points are assigned for each course completed as follows: 4.0 grade points for an A, 3.0 grade points for a B, 2.0 grade points for a C, 1.0 grade point for a D, and 0.0 grade point for an F

In an effort to encourage and recognize students who accept the challenges of academic rigor and demonstrate high performance, all students who complete the components of the Gold Medallion Honors Diploma will graduate with distinction and are recognized as Honor Graduates. To further

recognize students for accepting the challenges of advanced course work, distinction points will be awarded in addition to grade points in determining class rank. Distinction points for class rank allow students to be recognized for accepting the academic challenges of advanced courses and not be adversely impacted by grades in such rigorous coursework.

Weighted Courses

Weighted Courses involve classes designated as Honors and classes which are college level such as Advanced Placement, Dual Credit, or International Baccalaureate. They allow students to take rigorous coursework without adversely affecting class rank. A weighted Grade Point Average is only used for class rank purposes and diploma consideration for a student's transcript. Students taking weighted courses will receive additional distinction points towards class rank.

Class Rank

Class rank is based on a student's accumulated grade points plus distinction points for satisfactory completion of Distinguished Achievement Program courses. For purposes of Class Rank only, the grading school of all Honors, Pre-IB, Dual Credit, Advanced Placement (AP), International Baccalaureate (IB), Research Methods for Gold Medallion, and Research and Exhibition for Gold Medallion courses will be:

4.5 grade points for an A 3.5 grade points for a B 2.5 grade points for a C 1.5 grade points for a D 0.0 grade point for an F

If a combined course is offered, e.g., Advanced Placement and dual credit or AP and IB in the same class, a student may receive distinction points for AP or DC or IB. Distinction points may only be granted for one.

GPA and Class Rank are calculated at the end of the 3rd, 4th, 5th, 6th, 7th, and 8th semesters.

It is the procedure of North Kansas City Schools (NKCS) to exclude a reclassified student from the class rank of the new class. NKCS reports the class rank of the student with the student's cohort group at the time of reclassification. Upon request, a letter explaining this procedure and the student's class rank among his or her cohort at the time of reclassification will be included with the student's transcript. Please direct questions regarding this procedure to your high school's administration.

Alma Mater

Here's to Alma Mater, Northtown we're
true; Hornets so loyal, fighting on for you,
rah, rah, rah! We will cheer for Northtown
where e'er we be.

Fight Hornets, fight, fight, fight for N-
K-C.

Fight Song

Fight 'em Hornets, fight 'em Hornets, Fight for victory. Fight for honor, fight for glory,
Fight for NKC, rah, rah, rah! Loyal Hornets, loyal Hornets, Northtown hails to you.

Hail to thee oh Northtown Hornets,

We'll be true.

Contents

STRATEGIC PLAN	2
DISTRICT PROFILE	3
Student and Parent Rights.....	5
Transfer Procedures.....	6
Voter Information.....	7
Inclement Weather and School Cancellations	8
Student Accident Insurance	9
Student Health.....	10
District Transportation	15
Student Safety.....	19
Asbestos Hazard Emergency Response Act	22
Safe Schools Act – Acts of Violence	22
Student Behavior and Accountability	25
Food and Nutrition Services	28
ACADEMIC INFORMATION.....	32
Instruction and Assessment.....	32
Homework Philosophy and Guidelines	39
Parent/Teacher Interactions	40
Student Attendance and Accountability.....	41
Technology.....	46
PARENTS AS TEACHERS.....	53
Every Student Succeeds Act of 2015 (ESSA)	54

24-hour information

Additional information including all Board of Education Policies, staff e-mail, and telephone directories, and parent links are available on the North Kansas City Schools Website: www.nkcschools.org



STRATEGIC PLAN

MISSION STATEMENT

As champions for students, North Kansas City Schools' mission is to ensure that all are life-ready and ethically grounded in an everchanging world through innovative educational experiences that:

- Inspire Lifelong Learning
- Embrace Inclusion
- Forge a Unified Community

OBJECTIVES

Each student will access a comprehensive and cohesive preK-12 educational experience, as an agent of learning, to achieve personal success.

Each student will earn and value others' trust and respect by living with unwavering integrity, guided by authentic empathy.

Each student will communicate with clarity, conviction, and confidence, understanding the value of meaningful collaboration.

Each student will persevere as an agile learner, who uses multiple resources and divergent thought to develop creative responses.

STRATEGIES

Strategy I:

We will cultivate relevant learning opportunities that commit to high expectations, respond to student needs, and focus on life-ready skills.

Strategy II:

We will expand and strengthen our comprehensive systems of support to meet the individual needs of each student.

Strategy III:

We will ensure, develop, and support a healthy and highly capable workforce that is passionate about meeting the needs of each other and each student.

Strategy IV:

We will serve to unify our community.

Approved by the
North Kansas City Schools
Board of Education
May 10, 2022



DISTRICT PROFILE

Known for innovation and excellence, North Kansas City Schools serves over 21,500 students in suburban Clay County, Missouri. Established in 1913, the school district is rich in tradition with a heritage of active engagement with the 13 communities it serves. The district has 36 schools in Kansas City’s “Northland” stretching from Briarcliff to the Staley neighborhoods.

As a state and nationally accredited district, recognized as a Champion for All Students, North Kansas City Schools prepares students to be successful in a rapidly changing, diverse world. Students are engaged through challenging, thought-provoking educational experiences to master skills and knowledge to maximize their unique potential.

All four high schools are designated “A+ Schools,” allowing students who meet academic, attendance and citizenship criteria to receive two years of college tuition reimbursement from the State of Missouri. Each high school offers Distinguished Achievement Programs, which include the AP Capstone Diploma, Early College Academies (including MCC - Maple Woods Community College, Early College Academy, MCC – Advanced Technical Skills Institute Early College Academy, and the University of Missouri-Kansas City Early College Academy), and AP courses. Students also can elect to participate in highly specialized studies through International Baccalaureate or the International Baccalaureate Career Certificate program, Project Lead the Way, Northland Career Center, Northland Center for Advanced Professional Studies, as well as an Automotive Technology Program. In addition, all high school students in the district benefit from the College & Career Pathways program that takes each individual and moves them from learning about work to learning for work.

From birth, children in North Kansas City Schools can begin their path as learners through Parents As Teachers and district sponsored preschool programs. Students benefit from full-day kindergarten, gifted education, 5th grade strings, middle school extended-day programs, a summer enrichment program, and elementary before-and after-school childcare.

Although North Kansas City Schools is the second-largest public education system in Missouri, it is known for its neighborhood schools and sense of community. Teachers, support staff and educational leaders partner with parents and communities to ensure success for learners of all ages and abilities.

Active advisory committees and a thriving Education Foundation engage the greater community to inspire future successes. Through these ongoing partnerships, North Kansas City Schools ensures every student will have a solid academic foundation and will explore lifelong learning opportunities that lead to success beyond their formal education.

Board of Education – (816) 321-4361

Jan Kauk	President	jan.kauk@nkcschools.org
Jane Rinehart	Vice President	jane.rinehart@nkcschools.org
Dr. Terry Ward	Treasurer	terry.ward@nkcschools.org
Paul Harrell	Member	paul.harrell@nkcschools.org
Karee Gleason-Miller	Member	karee.gleasonmiller@nkcschools.org
Laura Wagner	Member	laura.wagner@nkcschools.org
Susan Hines	Member	susan.hines@nkcschools.org
Dr. Dan Clemens	Superintendent	superintendent@nkcschools.org
Peggy Cole	Secretary/Clerk	peggy.cole@nkcschools.org

Note: Board member e-mail addresses are subject to change. Check for the most current Board information on the district’s website at <https://www.nkcschools.org/Page/677>.

Additional Contacts

District Telephone	(816) 321-5000
District Fax	(816) 321-5001
District Website/Resources	www.nkcschools.org
School Violence Hotline Number	(816) 472-4665 (4SCHOOL)

Equal Opportunity Statement

The North Kansas City School District No. 74, as an Equal Opportunity Employer, complies with applicable federal and state laws prohibiting discrimination. It is the policy of the North Kansas City School District not to discriminate in any term or condition of employment or of participation in any program or activity on the basis of race, color, national origin, age, sex or disability or other status protected by law. Any person having inquiries concerning compliance with the regulations implementing Title VI of the Civil Rights Act of 1964, Section 504 of the Rehabilitation Act of 1973, Title II of the Americans with Disabilities Act of 1990 (ADA), or Title IX of the Education Amendments of 1972, may contact Dr. Eric Johnson, Assistant Superintendent of Compliance and Support, at 2000 NE 46th Street, Kansas City, Missouri 64116 (816-321-5000).

Nondiscrimination Statement

North Kansas City Schools, an Equal Opportunity Employer, does not discriminate on the basis of race, color, national origin, sex, disability or age in its programs and activities. The following people have been designated to handle inquiries regarding nondiscrimination policies:

Dr. Eric Johnson
Assistant Superintendent of Compliance and Support

Dr. Todd Schuetz
Assistant Superintendent of Human Resources

2000 NE 46th Street, Kansas City, MO 64116

Information presented in this handbook is updated regularly. For the most updated information, please visit your school's website or contact your school's office.

Student and Parent Rights

Diversity Statement

North Kansas City Schools fosters respect and understanding among all cultures and individuals who learn and work in our school community. We are committed to drawing strength from our differences and building on our similarities to:

- Create a positive environment.
- Empower all people to reach their full potential.
- Remove barriers of bigotry and prejudice that infringe upon individual freedom, respect, and progress.
- Attract talent that reflects our community.

Racial/Ethnic Harassment Policy

North Kansas City Schools is committed to providing a school environment that is free from all forms of harassment. In keeping with this commitment, the district maintains a strict policy prohibiting any type of racial/ethnic harassment by any student, staff member, agent of the district, or vendor. Harassment includes verbal abuse, physical threats, and visual displays. Racial/ethnic harassment will not be tolerated. Violation of this policy will result in disciplinary action. A parent conference with the school principal is mandatory in any substantiated racial/ethnic incident. Any individual who reports racial/ethnic harassment will not be retaliated against. Complaints will be handled as quickly as possible. Forms for reporting incidents of harassment are available at the school or at the district office.

The Harassment Form may be found by following the link: Policy AC

<https://simbli.eboardsolutions.com/ePolicy/policy.aspx?PC=AC&Sch=110&S=110&C=&RevNo=1.41&T=A&Z=P&St=ADOPTED&PG=6&SN=true>

Sexual Harassment Policy

North Kansas City Schools strives to create an optimal learning environment for its students. The district does not condone and will not tolerate the sexual harassment of students or staff, or a school or classroom environment which promotes or encourages sexual harassment. Sexual harassment is defined as the creation of a sexually hostile or offensive school or classroom environment occasioned by or due to the sexual advances or verbal or physical conduct of a sexual nature. This may include sexual touching, offensive jokes, insults, innuendos, gestures, or disparaging remarks whether written or verbal. A student who feels that he or she has experienced or observed sexual harassment should report such incidences to a classroom teacher, student counselor, school principal or the Executive Director of Student Services. The student is assured that the matter will be investigated, and appropriate action taken.

The Harassment Form may be found by following the link: Policy AC

<https://simbli.eboardsolutions.com/ePolicy/policy.aspx?PC=AC&Sch=110&S=110&C=&RevNo=1.41&T=A&Z=P&St=ADOPTED&PG=6&SN=true>

Public Concerns and Complaints

Parents need to discuss concerns with the teacher and/or principal first. If parents feel that these efforts have not resolved the issue, the District has a formal process for a parent to request a review of services. The Review of Services Form may be found by following the link:

<https://simbli.eboardsolutions.com/ePolicy/Policy.aspx?S=110&Sch=110&PC=KL&Z=P&revNo=1.11&srch=complaint&ktype=Any&encu=xa9jwu0EqNJP1IMR8zErI2Eu9hM2yurtmPs7R4uWoGx8Ahi06pluLzAy8g1tPrKI2cq0QcCe9BGslshNaALXXJplusjW9RTEwCaPwzE4gyFfT7PTxUqsslsh2cN82pluskKslshQQBJosLqFo4slhgl4vRofnx68OZZP7J3cvPLye0WeewUWBUBwMWCLwQG5Va7YA62t3slshDslshgeFh>

In-District Transfer Procedures

Students are expected to attend the school that serves the area of their residence. An exception may be granted, on a space-available basis, for reasons which meet the Board of Education policy. Parents need to complete a Transfer Request form annually. The form is electronic and can be found on the district website by clicking [here](#) and is reviewed by the Executive Director of Student and Community Services. As a general rule, parents must provide transportation for their children that attend a school approved by a transfer request.

Transfer Procedures

If it becomes necessary for your child to transfer, please notify the school office as soon as possible. If you are moving within the North Kansas City School District, your child's records will be sent to the receiving school automatically. If you are moving outside the District, a copy of the records will be sent to the receiving school upon its request.

Parents' Rights to Records

Parents or legal guardians of students in the North Kansas City Schools may, upon written request, examine their child's permanent record. Arrangements should be made with the principal.

Family Educational Rights and Privacy Act (FERPA)

The Family Educational Rights and Privacy Act (FERPA) is a Federal law designed to protect the privacy of a student's education records. The law applies to all schools, which receive funds under an applicable program of the U.S. Department of Education. FERPA gives parents certain rights with respect to their children's education records. These rights transfer to the student, or former student, who has reached the age of 18 or is attending any school beyond the high school level. Students and former students to whom the rights have transferred are called eligible students.

- Parents or eligible students have the right to inspect and review all of the student's education records maintained by the school. Schools are not required to provide copies of materials in education records unless, for reasons such as great distance, it is impossible for parents or eligible students to inspect the records. Schools may charge a fee for copies.
- Parents and eligible students have the right to request that a school correct records believed to be inaccurate or misleading. If the school decides not to amend the record, the parent or eligible student then has the right to a formal hearing. After the hearing, if the school still decides not to amend the record, the parent or eligible student has the right to place a statement with the record commenting on the contested information in the record.

- Generally, schools must have written permission from the parent or eligible student before releasing any information from a student's record. However, the law allows schools to disclose records, without consent, to the following parties:
 - School employees who have a need to know;
 - Other schools to which a student is transferring;
 - Certain government officials in order to carry out lawful functions;
 - Appropriate parties in connection with financial aid to a student;
 - Organizations conducting certain studies for the school;
 - Accrediting organizations;
 - Individuals who have obtained court orders or subpoenas;
 - Persons who need to know in cases of health and safety emergencies; and State and local authorities, within a juvenile justice system, pursuant to specific State law.

Schools may also disclose, without consent, "directory" type information such as a student's name, date of birth, parents' names, grade level, honors and awards and dates of attendance. However, schools must tell parents and eligible students about directory information and allow parents and eligible students a reasonable amount of time to request that the school not disclose directory information about them. Schools must notify parents and eligible students annually of their rights under FERPA. The actual means of notification (special letter, inclusion in a PTA bulletin, student handbook or newspaper article) is left to the discretion of each school.

The FERPA Form may be found by following the link:

<https://www.nkcschools.org/Page/695>

Visitor Policy

All visitors are required to report to the Main Office upon arrival at school and check-in using our Raptor school check-in system. This will require the visitor to provide a state issued identification, driver's license, or other acceptable official identification with a picture. Parents are invited to visit the school regularly and to be involved in all school activities. In order to ensure student safety and to preserve the integrity of the instructional day, visitors should not proceed beyond the office during school hours without authorization and without being checked in through the Raptor System. Student visitors from other locations will not be allowed to visit during instructional time or at functions after school. If, in the judgment of school administration, the visit is inappropriate, the visitor(s) will be asked to leave. We expect all visitors to act in a courteous and respectful manner.

Smoking and Vaping Policy

Smoking and vaping are not permitted on school district property or at any school-sponsored event.

Voter Information

The Clay County Election Board phone number is 415-8683 (415-VOTE).

Change of Address/Name

Fill out the Voter Registration Application Card to make name or address changes. If your address has changed and you do not update your information with the election board prior to the election, you may still vote by going to your new polling place on Election Day. Missouri voter registration cards are available in the school office.

Absentee Voting Procedures

In Person – Absentee voting by the voter in person may be done approximately five weeks prior to the election. The Election Board is located at 100 West Mississippi in Liberty and the Clay County Annex is located at 1909 NE 48th Street in Kansas City. Call the Election Board for hours at 415-8683.

By Mail – Absentee voting may be done by requesting an application. Include the following information: voter’s legal name, voter’s home address, address where ballot is to be mailed (if different from home address), reason for voting absent (illness, out of town, etc.) and signature of person requesting ballot.

The completed ballot must be notarized before it is returned to the Election Board.

The ballot may be returned in person or by mail.

Requests for Absentee Ballots may be made for each election, but no later than 5:00 PM the Wednesday preceding the election.

Inclement Weather and School Cancellations

School Cancellation Policy

Our school closing policy has one aim — to ensure the safety of your child. School may start two hours late; students may be released early; or classes may be canceled entirely due to inclement weather.

Please be familiar with the following information sources in the event of school cancellations, early release or late start.

Communication Channels:

North Kansas City Schools provides several ways for you to get the latest information on district school closings, including early release or a two-hour delayed start on days when weather looks hazardous:

1. **District Website:** www.nkcschools.org provides the first notification of school closings and other cancellations within minutes of a decision.
2. **School Messenger:** Phone, email and optional text messages are sent to school families when classes are canceled, delayed or students are released early. To opt-in, text “YES” to 67587.
3. **Social Media:** We will post information at facebook.com/NKCSchools and twitter.com/NKCSchools.
4. **Radio & TV:** Local stations share announcements on-air and on their websites.

Two-Hour Delayed Start Option:

NKC Schools has another option for inclement weather days to reduce the need for makeup days. The two-hour delayed start will be used for days when daylight and additional time to treat roads mean safe passage is possible for students.

Essentially, the school day will begin two hours later. On a two-hour delayed start day, all buses will pick up students two hours later than the regular pickup times, but the drop-off times will NOT

change. All schools will end their day at the regular end time with one exception. On Thursdays, high schools, middle schools, and elementary schools observe an early release schedule. If the district activates the two-hour delayed start, the early release would be canceled.

Alternate stops for buses will be in effect on two-hour delayed start days. Transportation Services communicates directly with all families affected by alternate stops.

Two-Hour Delayed Start:

- When the district follows a two-hour delayed start, **Adventure Club** will be open at ALL SITES from 7:15 a.m. to 6 p.m.

Early Release or Cancellation:

- There will be **no evening activities** including Community Education classes. **Exceptions will be posted** on the district website at: www.nkcschools.org
- **District Athletes** should refer to the Inclement Weather Guidelines for Athletics, posted on the district website at: www.nkcschools.org/winter-weather
- **Adventure Club** will operate on snow days, but at their **combined snow day sites**. Hours of operation will be 7:15 a.m. to 6 p.m.

If school is OPEN on a wintry day:

- Dress your child to protect against wind and cold.
- Buses may be a few minutes late. Please wait as we try to run every route.
- **Alternate bus stops** may be in effect due to road conditions. Bus riders on alternate routes are notified directly by Transportation Services via School Messenger. To see the current list of alternate bus stops, visit the district website at: www.nkcschools.org

We respect your decision to keep your child home when the weather is questionable.

Student Accident Insurance

Accident Insurance

The school district has purchased a group accident insurance program covering all students, grades K-12. Students are covered by the accident policy while they are participating in school schedules; school supervised and school funded activities, during the regular school term. Students also are covered while they are traveling as a sponsored group in a school assigned car, bus or van operated by a licensed driver over the age of 21 to and from the school and to a covered event site. Individual travel is not covered by the policy. If students have other insurance coverage, a claim must be filed with that insurance source first. The district policy is designed to consider payment of eligible expenses not covered by other insurance sources. Questions regarding this policy should be addressed to L.E. Smith & Associates, Inc., PO Box 411216, St. Louis, MO 63141, or toll free 1-800325-1350.

Student Health

Requirements for Admission to School

Students must reside in the district, meet the age requirement, and have proper immunizations to enroll in school. Students entering kindergarten must be five by August 1, and first graders must be six by August 1 of the year they are entering the respective grade. A birth certificate from the state where the child was born is requested for proof of age.

The state requires the following immunizations:

Immunization	State Requirement
DTaP/DTP/DT/Td	4 doses, with the last one on or after the fourth birthday
Polio	3 doses, with the last one on or after the fourth birthday
Measles, Mumps, Rubella (MMR)	2 doses, one on or after the first birthday, second dose at least 4 weeks from first dose.
Hepatitis B	3 doses, given at ACIP recommended intervals
Varicella	2 doses, on or after the first birthday or verification signed by an MD or DO that the child has had the disease
Tdap	1 dose required before entering 8 th grade
MCV	1 dose required before entering 8 th grade 12 th grade: Two doses of MCV are required unless the first dose was administered to a student who was 16 years of age or older, in which case only one dose is required.

Per state law, students are not permitted to enroll or attend until they are in compliance with immunizations, properly exempted, or current with an “in progress” schedule.

Student Health Examinations

It is recommended that students receive a thorough medical and dental examination before they enter school. Subsequent examinations should be received as often as indicated by the physician and/or dentist.

General Health Guidelines

Attendance is very important and every effort needs to be made to have your child in school each day. We understand that sometimes an illness will occur that will cause your child to be absent.

Please follow the guidelines below when determining whether to keep your child at home.

1. Keep all children home for a full 24 hours after symptoms of illness have subsided. Children must be symptom free (no fever, no diarrhea, no vomiting) for at least 24 hours without the use of fever-reducing medications, or anti-diarrheal medications before returning to school.
2. If your child has a temperature of 100.4 degrees or above, vomits, or has diarrhea during the evening or at night, please do not send him/her to school. Even if the child says that he/she

feels better, it has been our experience that the symptoms usually return and the child needs to go home.

School Nurse and Health Room

We are making a special effort to help students establish good health habits and stay healthy. The success of our efforts, however, depends on parental follow-through at home. Students should not come to school when they are ill or when they have an elevated temperature or a suspected contagious condition. This is for their protection as well as for others in the classroom. A registered nurse, a licensed practical nurse, or a health room clerk are on duty daily in the health room.

The nurse duties include:

- Providing first aid and assistance in case of an injury.
- Providing nurse's assessments for students who experience symptoms of illness.
- Conducting vision, and scoliosis screenings.
- Formulating individual health plans for students with special medical needs.
- Keeping student medical records and verifying compliance with state immunization requirements.
- Supervising the taking of medication as authorized by a parent or guardian under the provisions stated below.

In the absence of the nurse the health room clerk may provide first aid, assistance in case of an emergency and supervise the taking of oral medication as authorized by a parent or guardian.

School Health Records

Health records are an important part of your child's permanent school records. Informing the school when your child has had a serious illness, accident, operation, or contagious disease can help in meeting any special physical or emotional need after your child returns to school.

Medication Guidelines

When possible, we encourage medication be administered at home using a schedule that will not require doses during school hours. However, a child's health care provider may deem it necessary for medication to be taken during the school hours.

All prescribed medication must be accompanied by written permission from the parent to follow the physician or nurse practitioner's orders.

All prescription medication must be in the original container with the prescription label for that student, and the label contains the required details for administration direction.

Expired medications cannot be accepted.

The Medication Policy may be found here: <https://www.nkcschools.org/Domain/146>

Medication should never be sent with students on the bus. Parents should give medication to the nurse or office clerk in the health room, and then pick up any remaining medication when the illness is concluded.

Any over-the-counter/non-prescribed medication must be brought to school in the original container labeled with the child's name and accompanied by written permission from the parent to give the medication. Only the instructions on the container will be followed unless the physician or nurse practitioner provides alternative written orders. If a question arises, the school nurse will have the right to refuse administration of the medication until further clarification is received and documented from the physician or nurse practitioner.

Any change in the time or dosage of the medication must be accompanied by a written request from the physician and parent.

It is the student's responsibility to come to the health room for assistance in taking medication.

Both the Prescription Medication Authorization and the Over-the-Counter Medication Authorization forms may be found here:

<https://www.nkcschools.org/Domain/146>

Students Staying Inside from Recess or Excused from PE

Parents may request that their child be permitted to remain inside during recess or excused from gym class following a recent illness or injury for up to three days. **If it is necessary for the student to be excluded for longer than three days, a not from your child's physician will be required.** A note from a doctor limiting physical activity will apply to both PE and recess.

Benadryl for Emergency Allergic Reactions

The North Kansas City School District is now supplying school health rooms with Benadryl and Epi-Pens to be given at the discretion of the school nurse to children experiencing a sudden onset of a previously unknown, emergency allergic reaction.

Parental authorization is required in order for the nurse to administer the Benadryl and/or an Epi-Pen in an emergency situation. Please mark "Yes" or "No" on the back page of the health form and provide a parent/guardian signature and return it to your school nurse. This can also be found at the bottom of the health form when enrolling online. The Benadryl and Epi-Pens supplied by the district is only for children with **unknown allergies** who are experiencing a life threatening allergic reaction. It is intended only as a first response to the reaction and possible anaphylaxis. Parents would still be notified and would be expected to pick their student up from school for further medical evaluation. Please note that parents of children with known allergies and who have physician orders for Benadryl and/or Epi-Pens at school will still need to supply their child's Benadryl and Epi-Pens. Also note that the Benadryl may contain red food dye.



Extraordinary Educational
Experiences

BENADRYL FOR EMERGENCY ALLERGIC REACTIONS

TO: Families of NKC Schools
FROM: North Kansas City Schools Health Services Department

North Kansas City Schools Board Policy JHCD has been changed to allow school nurses to dispense Benadryl and Epi-Pens to students experiencing an emergency allergic reaction. The District is now supplying school health rooms with Benadryl and Epi-Pens to be given at the discretion of the school nurse to children experiencing a sudden onset of severe allergic reaction. A physician with Children's Mercy Hospital provided guidance for this change in policy.

Please note that the Benadryl and Epi-Pens supplied by the district are only for children with **unknown allergies** who are experiencing a life-threatening allergic reaction. It is intended only as a first response to the reaction. Parents would still be notified of the reaction and would be expected to pick their student up from school for further medical evaluation.

Please note also, parents of children with **known allergies** and who have physician orders for Benadryl and/or Epi-pens at school, will still need to supply their child's Benadryl and Epi-Pens.

As an additional note, the Benadryl is cherry flavored and contains red food dye.

Thank you for ensuring that we have an official record on file, so we will know whether or not we may give your child Benadryl and an Epi-Pen in an emergency allergic reaction situation. If you have any questions, your school nurse would be happy to answer them.

Criteria for Being Sent Home/Emergencies

In case of an accident or illness at school, parents will be contacted. Current phone numbers for home and work for both parents are very important. Names and telephone numbers of relatives and/or friends who can assume temporary responsibility for your child until a parent can be reached need to be provided to the school. No seriously ill or injured child will be sent home alone. The telephone number of your child's doctor and dentist are necessary in case of an emergency when a family member cannot be reached, and immediate instructions are needed.

Parents will be notified to pick up their child in the event of illness or serious injury. General criteria for sending an ill child home will be a temperature of 100.4 degrees, vomiting, diarrhea, severe coughing, and suspicion of a communicable disease or the inability to participate in normal classroom activity. Students may not return to school until symptom free for 24 hours, without medication.

The school nurse cannot assume the responsibility for any emergency treatment beyond first aid. The nurse is not permitted to diagnose and cannot be expected to treat an illness or injury that occurred away from school. A child who is ill (ex: fever, severe cold, vomiting, diarrhea) should be kept home.

Communicable Diseases

The North Kansas City School District School Board recognizes its responsibility to protect the health of students and employees from the risks posed by communicable diseases. The Board also has a responsibility to protect individual privacy, educate all students regardless of medical condition and treat students and employees in a nondiscriminatory manner.

It is important that the school be notified if your child develops one of the following diseases:

Disease	Incubation	Exclusion from school if necessary
Chicken Pox	10-21 days	Students may be readmitted when skin is clear -OR- all lesions are crusted
COVID-19	2-14 days	If you test positive for COVID-19, stay home for 5 days after first symptom or the testing date, whichever was first; or follow current local health department guidelines and contact your medical provider for further guidance.
Impetigo	1-10 days	Until skin sores are healed, or until 24 hours after medical treatment has been identified and condition is improving.
Pink Eye	24-72 hours	Until there is no longer eye discharge or until treatment by a physician and condition is improving, usually 1-2 days
Ringworm	4-10 days	Until effective treatment is started. Severe cases may require prescription medication. Area must be covered with a band aid.
Scabies	2-6 weeks before onset of itching in primary infections; for recurrences, 1-4 days	Until the day after adequate treatment with an effective preparation which kills the mites
Scarlet Fever Strep Throat	1-3 days	24 hours after starting antibiotic and 24 hours fever free
Measles (Rubeola)	7-18 days	Minimum of 4 days after the appearance of the rash
Measles (Rubella)	14-23 days	Minimum of 7 days after the appearance of the rash
Mumps	12-25 days	Minimum of 9 days from the onset or until the swelling is gone
Whooping Cough	6-20 days	From time of diagnosis until 3 weeks after the development of cough. If treated with erythromycin, exclude 5 days after onset of therapy.

For further information, please refer to school district policies and regulations by following the link:
Policy EBB

<https://simbli.eboardsolutions.com/ePolicy/Policy.aspx?S=110&Sch=110&PC=EBB&Z=P&revNo=1.01&srch=medical&ktype=Exact&encu=xa9jwu0EeqNJP1IMR8zErI2Eu9hM2yurtmPs7R4uWoHWgiY6vnVKIE00sll7aOvayaG6HeSLLyoilPc861dIDs0zQjzePtSepyXNeWOK85No4plusqY001hPLgjvthjLEe0SLQYBLuVmplusaFGslshfshENEADd33g0JnfZCjthud1cq8nKuFZhqhgplusouvslshqJTcOjgL>

District Transportation

Free Transportation

Transportation is provided free for students living more than one mile from their attendance center. In addition, transportation for students residing less than one mile from school is available only in areas that the Board has determined to be unreasonably hazardous.

Paid Transportation

Paid transportation is available on scheduled routes on a “space-available” basis for students residing less than one mile from school. Bus routes cannot be altered for paid riders. Application for paid transportation must be submitted each year. Paid transportation forms are available at the school or on the district website.

Routing

The Transportation Routing Department works diligently to provide the closest and safest bus stop for every student designated as a bus rider, utilizing NHTSA guidelines.

- State regulations discourage the routing of school buses into dead-end streets and cul-de-sacs.
- Scheduled bus stop times are provided as a guide. Actual stop time may be up to five minutes earlier or later than the scheduled time under normal driving conditions. During inclement weather, the bus may be further delayed.
- Should a student’s mode of transportation to and from school change, the parent should inform the school in writing.
- Only students enrolled in North Kansas City Schools, who are bus eligible, may ride the district buses. The district is not licensed by the state to transport adults. Parents may ride on district buses only while acting as chaperones on activity trips.
- For more information about bus schedules and routes, contact your school or Transportation Services at (816) 321-5007.

Special Education Routing

Every student with a Special Education requirement will be routed and transported appropriately, in strict compliance to their IEP or 504. Door to Door, Curb to Curb, and SLAB (Safest Location Assessable by Bus) bus stop locations will be approved by Transportation, as defined by NHTSA guidelines, prior to routing being completed.

Definitions for Door to Door and Curb to Curb:

- Door-to-door services would indicate that district personnel will be accompanying the child in the mornings from the door of home onto the bus and then to the door of the school. In the afternoons, district personnel would accompany the child from the door of the school onto the bus and then to the door of the home in the afternoon. Door to door should rarely be used except in extreme cases where district personnel are required to assist the student from the school on to the bus and from the bus stop to door of the home-in conjunction with an appointed adult.

- Curb to curb indicates that district personnel are not required to walk the student to the door but will deliver the student at the curb of the students' home or alternate address—if address is not assessable by a bus, alternate transportation will be arranged. The student may transition from the bus to the door of the home or school without additional assistance from district personnel but is required to have an approved adult present at the door of the bus at pick up and drop off, unless otherwise denoted in their IEP or 504.

Assigned Bus Stops

Each student is assigned a designated bus stop. Students are permitted to ride a different route only after a “Request for Alternate Transportation” form has been submitted and approved, this form can be found at the school or on the district website. When an alternate route request is approved, service on the original route is discontinued. This alternate route would now be the student’s permanent route on all school days—the student will not be able to ride the “original route” unless the alternate route is discontinued or altered.

On rare occasions, parents request that their children be permitted to board or disembark the school bus at some place other than their designated stop. The school district policy and Missouri state law for these special situations is as follows:

1. These exceptions will be made only for students who are already authorized transportation. Students who are not authorized riders cannot be transported.
2. Written permission from the student’s parent or guardian must be received and approved by the building principal—the student will be given a signed “Transportation Bus Pass” to present to the Driver upon boarding the bus.
3. The stop requested must be a designated stop on an existing route.
4. If the request involves the students’ riding another bus, the request will be granted only if there is adequate room for the additional rider.
5. Special requests will be approved only for emergency childcare purposes. Permission will not be granted for transportation to jobs, scouts, parties, etc.

Walking Distances

School bus routes are designed to comply with guidelines established by the Missouri Department of Elementary and Secondary Education. Walking distances to bus stops are based on one block being equal to one-tenth of a mile, or 528 feet. Students walk to central pickup locations.

We observe the following guidelines for walk distance to a bus stop:

- Elementary students (K-5), not more than three blocks.
- Middle School students (6-8), not more than four blocks.
- High School students (9-12), not more than five blocks.

Bus Regulations

The Missouri Department of Elementary and Secondary Education and North Kansas City Schools use the following rules:

1. The Bus Driver shall be in charge of all passengers at all times and shall have authority to assign seats. Students shall not stand in the traveled portion of the roadway while waiting for the bus.
2. Students should conduct themselves in a safe manner while waiting for the bus, away from the traveled portion of the roadway.
3. When it is necessary for students to cross the street, board or disembark the bus, they must cross a minimum of ten feet in front of the bus on the signal of the driver, NEVER behind the bus.
4. Students shall remain seated, facing the front of the bus. No portion of their body should be extended in the aisle or out of the bus window.
5. The following items are not permitted on the bus: tobacco products of any type, alcohol, drugs, any illegal or controlled substance, weapons of any type, including guns, knives or gun or knife look-alikes, any object that may harm another student, explosive devices, fireworks, matches, lighters, animals, or insects of any type.
6. Students shall not throw items inside the bus, or out of the bus windows.
7. The aisles and exits shall be clear at all times. Students may not open or close any door except in an emergency.
8. Vandalizing the bus or any of its equipment is prohibited and restitution may be required to repair/replace said vandalism.
9. Students may not eat or drink on the bus.
10. Items too large to be held safely while students remain seated may be stored in a designated area. If that cannot be done safely, the student must make other arrangements for transporting these items. Many large instruments are not transportable on the bus, please see your school's instrument teacher, or click --[here](#)-- for a complete list.
11. Electronic devices are to be used in a courteous, responsible, and appropriate fashion.— when listening to any of these devices, the student MUST have earbuds or headphones. If these electronic devices cause any type of disruption or distraction, they may be taken by the bus driver/aide for the duration of their bus ride, but will be returned at the students stop.

Bus Behavior

Transportation is provided free for students living more than one mile from their attendance center. No student is required to ride the school bus in order to attend school. Riding the bus is a privilege, which is earned by obeying safety and behavior rules. Our first concern is safety. We provide supervision during the loading and unloading of buses and while students are on the buses, this is limited to some degree as drivers must be watchful of traffic and road conditions. While driving, a bus driver must rely on the cooperation of students in order to maintain a safe and orderly bus. Thus, we depend on our students to practice responsible self-discipline while riding the buses. Each student is expected to conform to a reasonable standard of conduct that will not jeopardize fellow students, the driver, or the equipment. If a student chooses to misbehave or disobey bus rules, appropriate consequences will be administered which may include suspension of Transportation Services.

Bus Expectations (The Basics)

1. Students are expected to be at the bus stop five (5) minutes prior to the scheduled bus stop time.
2. Every Middle and Elementary School student will be assigned a seat on the bus, that seat will be noted on a seating chart. All seating charts are filed electronically for the Administrator's reference. Changing seating arrangements are the driver's prerogative, dependent upon behavior and the best/safest location for a given student. Students are expected to stay in their assigned seat, sitting properly, for the duration of the ride.
3. Every student will be expected to talk in a classroom voice while riding the bus.
4. Every student will be expected to keep their hands and feet to themselves.
5. As every bus is an extension of the classroom, any behavior or action that is not permissible in class or school, also will not be permissible on the bus.
6. Every Elementary School student must have an ID tag and we encourage having a Zpass card (Opt-out form on Transportation page of District Web site) while riding the bus. If a student has a Zpass card, they are expected to scan their card, getting on and off the bus-for their safety and protection.

Note: The Zpass card creates an electronic record of when the student enters and exits the bus. If a student loses either of these two items or changes backpacks—please have them report to the school office for replacements.

Bus Disciplinary Procedures

Students, parents, bus drivers and administrators must work together to ensure that North Kansas City Schools provides safe, timely and efficient student transportation. As each student is expected to conform to a reasonable standard of conduct, should a student choose to misbehave or to jeopardize the general welfare of those on the bus, the following procedures may be followed.

1. The Driver will make every effort to improve disruptive and/or unsafe behavior prior to writing a bus discipline referral. The driver/aide will exhaust three specific redirected steps, denoted on the Bus Discipline referral form.
2. Upon the next occurrence of disruptive and/or unsafe behavior, the Driver will write a "Bus discipline Referral" for the student(s) involved, to be delivered to Transportation Administrator and the Building Administrator. The Building Administrator will determine what disciplinary action should be taken. Copies of the referral will be sent to the parents for their signature and to Transportation Services;
3. If the unsafe behavior continues, a second referral may be issued. The Building Administrator may request a conference with the student and/or parent to begin the investigation. Should additional referrals be issued, and the Administrator has completed a thorough investigation and processing of prior referrals, the next Administrative action may result in, but not be limited to, suspension of bus riding privileges in the following discretionary sequence:
 - (a) The third referral—ONE-day suspension*
 - (b) The fourth referral—THREE-day suspension*
 - (c) The fifth referral—TEN-day suspension*

- (d) If after a series of suspensions and the disruptive, inappropriate, or unsafe behavior continues—bus riding privileges may be terminated for the remainder of the school year.

*Upon returning from any bus suspension, the administrator may require a conference with the student, parent, and Transportation Administration as a part of the conditions for restoring transportation privileges.”

Severe student behavior that endangers the health and safety of other passengers or the Driver will be deemed a “serious offense” and may result in an immediate suspension of bus riding privileges. In this case, the Building Administrator will notify the students’ parents when an immediate suspension is necessary by phone and/or referral response.

Note: If any bus suspension is deemed necessary, it is the responsibility of the parent or guardian to ensure that the student attends school.

Harassment on the School Bus

Each child should experience a safe ride to school free from threats or intimidation. Sexual comments, gestures, or actions by students to other students will be considered sexual harassment and a violation of district policy. Racial/ethnic harassment is a violation of district policy. Harassment of any kind will not be tolerated. Confirmed violations will be referred to a Building Administrator for action. Your child should enjoy safety and respect in school and on the bus. You can help by reminding your child about appropriate behavior. If your child is experiencing harassment, please have them report it to the bus driver, school administrator, and/or Transportation.

Bus Cameras

In an effort to maintain order and discipline, buses are equipped with video and audio surveillance systems. Due to confidentiality, parents will not be allowed to view the video without prior approval from the Superintendent and signed waivers from all students’ parents within view.

Damaged, Lost or Stolen Items

Reasonable efforts will be made to remind students to secure and gather belongings while on the school bus during the off-loading process, however the District is not responsible for damaged, lost, or stolen items brought onto the bus.

Special Services

Transportation service is available for students with disabilities. For information, contact Pupil Services at (816) 321-3848.

Student Safety

Safe and Respectful Schools

We believe that our number one priority, safe and respectful schools, is a prerequisite for learning. Thorough supervision of hallways, lunchroom, and outside grounds before and after school is important in keeping our school safe and respectful. To help ensure a safe environment, all doors will be locked from the outside except for the front foyer.

Urgent Communication

If events at school require urgent communication home to families, please know NKC Schools will always do its best to be as timely as possible. The speed of texting and social media often means news breaks quickly, not allowing the district an opportunity to inform families and staff before local media has it online or on TV. Our first priority is always to ensure students and staff are safe. Once we know the people in our buildings are okay, our next priority is informing families of the situation as we know it, and that all is well.

We often work in partnership with local law enforcement in these types of situations. When law enforcement is involved, the district follows their lead and releases information at their direction. We will always share as much information as we can, as quickly as we can. However, at times this is not always possible. Ideally the first details families receive would come from the school and/or district, but our need to provide accurate information often means Facebook, Twitter, local media, and text messages will be sharing the news before district communications has gone out. Thank you for understanding any perceived delay in notifying families as we work through our processes and procedures.

Emergency/Crisis Plan

Each district site has an Emergency/Crisis Plan in place to address specific emergencies. To facilitate preparedness students will participate in various drills throughout the school year.

Tornado Safety

When the National Weather Service issues a **Tornado Warning** that affects NKC Schools, sites included in the warning will take appropriate measures to shelter students, staff, and visitors. How and where students are sheltered may vary from site to site due to differences in building configurations. If a Tornado Warning occurs during a release time, students and their bus drivers will remain in the school until the warning has been lifted and an "all clear" has been given by the Superintendent or his designee. Parents, waiting in cars to pick up their children when warning sirens are activated, will be encouraged to seek safe shelter inside the school building.

Earthquake Safety

Information regarding earthquake safety procedures may be found by following the link:

<http://sema.dps.mo.gov/docs/earthquake/Schools.pdf>

Who May Pick Up Students from School

The school will not allow students to leave with someone other than a parent unless directed to do so by a parent. In the event that a biological parent has had his/her rights restricted by a court, such documentation must be on file in the school office. Parents are responsible for keeping the office informed of any changes in addresses, phone number, emergency contact information, or court orders throughout the school year. The school may require the person who is picking up a student to show valid photo identification.

Change in Mode of Transportation

Should a student's mode of transportation to and from school change, the parent must inform the school in writing.

Drug Free Schools

The North Kansas City School District is concerned with the health, welfare, and safety of its students. Therefore, use, sale, transfer, distribution, possession or being under the influence of unauthorized prescription drugs, alcohol, narcotic substances, unauthorized inhalants, controlled substances, illegal drugs, counterfeit substances, and imitation controlled substances is prohibited on any district property, in any district-owned vehicle or in any other district-approved vehicle used to transport students to and from school or district activities. This prohibition also applies to any district-sponsored or district-approved activity, event, or function, such as a field trip or athletic event, where students are under the supervision of the school district. The use, sale, transfer, or possession of drug-related paraphernalia is also prohibited. For further information, please refer to school district policies and regulations by following the link: Policy-JFCH

<https://simbli.eboardsolutions.com/ePolicy/Policy.aspx?S=110&Sch=110&PC=JFCH&Z=P&revNo=1.01&srch=drug&ktype=Exact&encu=xa9jwu0EeqNJP1IMR8zErI2Eu9hM2yurtmPs7R4uWoHCbyslshKIreadvE9AujLplusemFjpMOFK6wyKeQw3K1GsYvoU0kSMLZ9O86XGiYdcdMTkWtIQEFOoWIwlfE2gijjiSumLSCFSsls hdxXlslshJY3QrOMrWmKReG5FIBDEWsvlvplusg5ifg=>

Drug Detection Dog

North Kansas City Schools will work in conjunction with local law enforcement agencies to employ the use of drug detection dog periodically throughout the school year. The purpose of the district's efforts is to create a zone around our schools that is free from the menace of drugs and at the same time respectful of the privacy of our students. The scope of the operation is:

- There will be no prior notice to the students of the visit of the drug detection dog.
- The building will be subject to periodic rechecks throughout the school year at the discretion of the administration and local law enforcement.
- The drug detection dog will be used to sniff classrooms, unattended objects, and unoccupied areas of the building or campus.
- At no time will the dog be intentionally used to physically sniff students. The presence of the dog around students will be minimized as much as possible.
- Only certified narcotic canines will be utilized.



Extraordinary Educational
Experiences

Asbestos Hazard Emergency Response Act

In 1986, the United States Congress passed the Asbestos Hazard Emergency Response Act (AHERA), which required the U. S. Environmental Protection Agency (EPA) to establish Federal regulations that safeguard our Nation's school children and employees from asbestos exposure in school buildings. The initial inspection of buildings in North Kansas City Schools was completed in 1988 by accredited asbestos inspectors. Based on the results of this inspection, an Asbestos Management Plan was written for each building owned or leased by North Kansas City Schools. A master copy of the Asbestos Management Plan is available at the main Administrative Center, 2000 NE 46th Street, Kansas City, Missouri, and an individual copy specific to the building is available at each respective building. Mr. Mark Graviett, Director of Operations and Maintenance, is the district's designated Asbestos Program Manager. For information or inquiries please email Mark Graviett, mark.graviett@nkcschools.org

AHERA regulations also require these buildings to be re-inspected every three years. The latest reinspection was completed in August 2016. A master copy of these re-inspections is available at the main Administrative Center, 2000 NE 46th Street, Kansas City, Missouri, and an individual copy specific to the building is available at each respective building.

Please be assured that the district will continue to take whatever steps necessary to ensure a safe environment for its students, staff, and visitors.

Safe Schools Act – Acts of Violence

What is an Act of School Violence?

The use of physical force is considered an act of school violence if it occurs on school property, including a school bus in service on behalf of the district, or while involved in school activities. An act of school violence is the exertion of physical force by a student with the intent to do physical injury to another person that creates a substantial risk of death or that causes disfigurement or protracted loss or impairment of the function of any part of the body.

Reporting Acts of Violence

School district administrators are required to report acts of school violence to teachers and other school employees who have direct responsibility for the child's education or who interact with the student on a professional basis within the scope of their assigned duties.

Reporting to Law Enforcement Officials

School administrators are required to report to law enforcement officials, as soon as reasonably practical, any felony or other serious criminal act committed on school property, including but not limited to such acts committed on any school bus in service on behalf of the district or while involved in school activities.

Removal of Students

District administrators may immediately remove students posing a threat to themselves or others. Prior disciplinary action may not be the sole basis for such removal. Removal of a student with a disability is subject to state and federal procedural rights.

Administrator Rights

The administration retains the right and privilege to issue penalties for acts of discipline not specifically stated herein and to alter any penalties as he/she considers necessary. Furthermore, the administration reserves the right to amend any provision in this handbook, which he/she deems to be in the best interest of the education process.

Weapons in School

The Board of Education recognizes the importance of preserving a safe educational environment for students, employees, and patrons of the district. In order to maintain the safety of the educational community, the district will strictly enforce the necessary disciplinary consequences resulting from the use or possession of weapons on school property, buses, or school activities. No student may possess a weapon on school property at any time, except as specifically authorized during a schoolsponsored or school-sanctioned activity permitting weapons. School property is defined as: Property utilized, supervised, rented, leased, or controlled by the school district including but not limited to school playgrounds, parking lots and school buses, and any property on which any school activity takes place.

A weapon is defined to mean one or more of the following:

1. A firearm as defined in 18 U.S.C. 921.
2. A blackjack, a concealable firearm, firearm, firearm silencer, explosive weapon, gas gun, knife (any dagger, dirk, stiletto, or bladed hand instrument that is readily capable of inflicting serious physical injury or death by cutting or stabbing a person. "Knife" does not include any ordinary pocketknife with no blade more than four inches in length), knuckles, machine gun, projectile weapon, rifle, shotgun, spring gun, switchblade knife, as these terms defined in 571.010, RSMo.
3. A dangerous weapon as defined in 18 U.S.C. 930 (g) (2).
4. All knives and any other instrument or device used or designed to be used to threaten or assault, whether for attack or defense.
5. Any object designed to look like or imitate a device as described in 1-4.

Mandatory Discipline for Weapons Violation

In accordance to current law, any student who brings or possesses a weapon as defined in #1 or #2 above on school property will be suspended from school for at least one (1) calendar year or expelled and will be referred to the appropriate legal authorities. The suspension or expulsion may be modified on a case-by-case basis upon recommendation by the superintendent to the Board of Education. Students who bring or possess weapons as defined in #3, #4, and #5 and not otherwise included in #1 and #2, will also be subject to suspension and/or expulsion from school and may be referred to the appropriate legal authorities.

Bullying

Bullying/Cyberbullying are defined in and prohibited by Board Policy JFCF. It is crucial that any act/s of bullying be reported to the building administration immediately. Further information may be found at the following link: Policy JFCF

<https://simbli.eboardsolutions.com/ePolicy/policy.aspx?PC=JFCF&Sch=110&S=110&C=&RevNo=1.11&T=A&Z=P&St=ADOPTED&PG=6&SN=true>

Hazing

For purposes of this policy, hazing is defined as any willful activity, on or off school grounds, that recklessly, intentionally, or knowingly endangers the mental or physical health or safety of a student for the purposes of initiation or admission into or continued membership in any student organization. Hazing also includes activities that put another in a ridiculous, humiliating, or disconcerting position. Hazing occurs even when all students involved are willing participants.

North Kansas City Schools prohibits any form of hazing, including but not limited to initiation rituals and harassment. In North Kansas City Schools, hazing is unacceptable conduct and can result in disciplinary action. Disciplinary action may include, but is not limited to, a student's suspension or expulsion from school or the termination of an employee's employment with the District. No student, coach, teacher, sponsor, volunteer, nor district employee shall plan, direct, encourage, assist, engage, or participate in any hazing activity. Administrators, coaches, teachers, sponsors, volunteers, and district employees shall not permit, condone, or tolerate any form of hazing. Students who have been subjected to hazing are instructed to promptly report such incidents to a school official.

Hazing Complaint Procedure

When a student has been or believes that he/she has been subjected to a hazing incident, the student shall promptly report the incident, orally or in writing, to the building principal or his/her designee.

The principal or his/her designee shall conduct a timely and thorough investigation of the alleged hazing incident. The principal or his/her designee shall prepare a written report summarizing the investigation and recommending disposition of the complaint.

If the investigation results in a substantiated finding of hazing, the principal or his/her designee shall impose appropriate disciplinary action, as circumstances warrant, in accordance with other school policies. Additionally, a student found to have engaged in hazing may be subject to disciplinary

action by an administrator, coach, teacher, or sponsor of any activity up to and including removal from any or all activities.

Recklessly Endangering Mental Health

Recklessly endangering the mental health of a student includes those actions that subject a student to extreme mental stress, including, but not limited to, sleep deprivation, physical confinement, forced conduct which could result in extreme embarrassment, or any other extreme stress-inducing activity.

Recklessly Endangering Physical Health or Safety

Recklessly endangering the physical health or safety of a student includes, but is not limited to, acts of physical brutality, whipping, beating, branding, exposing to the elements, forced consumption of any food, liquor, drug, or other substance; forced smoking or chewing of tobacco products; or any other forced physical activity that could adversely affect the physical health or safety of an individual.

Delegation of Responsibility

District administrators shall promptly investigate all complaints of hazing and shall administer appropriate discipline to all individuals who violate this policy. Students, administrators, coaches, teachers, sponsors, volunteers, and district employees shall be alert to incidents of hazing and shall report such conduct to the building principal or his/her designee. Annually, the District shall inform students, parents, coaches, teachers, sponsors, volunteers, and district staff that hazing of district students is prohibited and may inform such persons by means of: (1) distribution of a written policy, (2) publication in handbooks, (3) presentations at assemblies, (4) verbal instructions by the coach or sponsor at the start of the season or program, and/or (5) posting of notices and/or signs.

Student Behavior and Accountability

Principles of Behavior

- Students will be respectful and courteous.
- Students will be prepared for class.
- Students will treat others as they wish to be treated.
- Students will try their best at all times.

School Regulations/ School Expectations

The primary objective of requiring appropriate student behavior and self-discipline is to produce a positive and safe learning atmosphere. All students will assume personal responsibility for their behavior and actions, develop appropriate self-control, exhibit self-discipline, and accept the responsibility and consequences of any inappropriate behavior. To accomplish this objective requires a cooperative effort from students, staff, and parents. Expectations are:

Student Conduct Associated with the School Day, School Transportation and School Activities

The school district believes in a proactive approach to student safety and well-being involving the parents and all associated with the activities of the school day and school events. Students are

responsible for following school rules and regulations anytime students are involved in activities associated with the school. This includes, from the time students leave their home, throughout the school day, until they arrive at home after the school day or school activities. This student responsibility applies to any school district property, school field trips, school sponsored activities, walking to and from school or when participating in school transportation. School transportation includes between home and the bus stop, while at the bus stop and when riding on the school bus.

Student Conduct

North Kansas City Schools considers unacceptable, any conduct which is prejudicial to good order and discipline in the schools or which tends to impair the morale or good conduct of students. As the result of such conduct, students may be subjected to more severe disciplinary action, including suspension or expulsion from school and/or school activities. This applies to conduct in all school buildings on or about school grounds, at all school activities, or activities involving North Kansas City Schools, or in any vehicle when that vehicle is used to transport students for the school district

This extends to conduct that aids, abets, counsels, procures, or causes any act, deemed unacceptable. This also extends to conduct which assists an offender in preventing the student's punishment.

For further information click on the following Link: Policy JG

<https://simbli.eboardsolutions.com/ePolicy/Policy.aspx?S=110&Sch=110&PC=JG&Z=P&revNo=1.11&srch=discipline&ktype=Exact&encu=xa9jwu0EeqNJP1IMR8zErI2Eu9hM2yurtmPs7R4uWoEOBfqvmzKiojslshU52slsh2slshM9V88NmFE8qxWZD1XMr6pRvRtp0dx6SsT5Xndb7tllRk01wzvn6rdLcQkeSsLVn2ldTvgovYQz4ge1eav7VKk29wJOxwclsld1zlpLvKkulgplusPmMH8xmVMSqoceU72pla0jZ>

Discipline Policy

The safety and well-being of our students and staff are paramount. North Kansas City Schools Board of Education supports the development of effective programs that change behavior, so students leave with skills that allow them to function successfully. A safe and respectful learning environment is accomplished by working together. This means:

1. Commitment from home and school to hold students responsible for their behavior.
2. Comprehensive staff development programs that promote excellent teaching and effective classroom management.
3. Provision of a comprehensive series of support programs that recognize the diverse strengths and learning styles of students.

Student Discipline Responsibility

North Kansas City Schools Board of Education has the legal authority to make all needed policies, rules and regulations for organizing and governing the school district. This includes the power to suspend or expel a student for conduct, which is prejudicial to good order and discipline in the schools or impairs the morale or good conduct of the students. These policies, rules and regulations will apply to all students in attendance in the district instructional and support programs, as well as school-sponsored activities and events. Students who have been charged, convicted, or pleaded guilty in a court of general jurisdiction for commission of a felony may be suspended in accordance with law.

The Board of Education assigns the responsibility to the Superintendent (or designee) to work with the district's professional staff in the implementation of this policy and the preparation of related rules and regulations. Building principals are responsible for the development of rules and regulations regarding student conduct needed to maintain proper behavior in schools under their supervision. In addition, teachers shall have the authority to make and enforce necessary rules for the internal governance in the classroom, subject to review by the building principal. The Board expects each teacher to maintain a satisfactory standard of conduct in the classroom.

All employees of the North Kansas City Schools shall annually receive instruction related to the specific contents of the district's discipline policy in the course of their duties. The training includes, but is not limited to, approved methods of dealing with acts of school violence, disciplining students with disabilities, and instruction in the necessity and requirements for confidentiality.

Corporal Punishment

Corporal punishment shall not be used in the North Kansas City Schools. A staff member may, however, use reasonable physical force against a student without advance notice to the principal, if it is essential for self-defense, the preservation of order, or for the protection of other persons or the property of the school district.

In-School Suspension

Detention or an in-school suspension program provides principals with additional alternatives for dealing with disciplinary problems. The principal, or principal's designee, will determine the time and length of the detention or in-school suspension.

Student Suspension and Expulsion

North Kansas City Schools Board of Education believes that the right of a child to attend free public schools carries with it the responsibility of the child to attend school regularly and to comply with the school district's lawful policies, regulations and rules. This observance of school policies, rules and regulations is essential for permitting all students to learn at school.

Therefore, the administrative prerogative to exclude a student from school because of willful violation of school rules and regulations, willful conduct which materially or substantially disrupts the rights of others to an education, or willful conduct which endangers the student, other students, or the property of the school, is permitted, provided such action is taken in accordance with due process and with due regard for the welfare of both the student and the school.

The term "suspension" refers to an expulsion from school that will not exceed a specific period of time. The term "expulsion" refers to exclusion for an indefinite period.

Suspensions for More than 180 Days and Expulsions

Where suspension for a period greater than 180 school days, or expulsion is recommended or required by Board policy, the student and the student's parents or others having custodial care of the student shall be notified orally and in writing stating the nature of charges and the action proposed to be taken. The Board, or the committee of the Board, shall have a hearing on the charges preferred.

The student and student's parents, or others having custodial care of the student, shall be provided notice of the hearing, and shall be notified in writing of the time and place of the Board hearing. If, in the judgment of the Superintendent, the student's presence poses a continuing danger to persons or property, or an ongoing threat of disrupting the academic process, the superintendent may temporarily suspend the student for a period not to exceed 10 days or until a hearing is held, whichever comes first.

At any requested or required hearing before the Board the student and the student's parents or others having custodial care of the student may be represented by counsel and will have the opportunity to examine witnesses and present evidence on their own behalf. The president of the Board may appoint a committee of board members to hear such matters with full authority to act for the Board. At any hearing before the Board, as set forth in this policy, the Board may consider the student's record of past disciplinary actions, criminal court records or juvenile court records consistent with the law, or the actions of the student which would constitute a criminal offense.

The Board will make a good faith effort to have the student's parents or others having custodial care present at any requested or required hearing before the Board.

Remedial Conference

Prior to the readmission or enrollment of any student who has been suspended out of school or expelled in accordance with this policy, a conference must be held to review the student's conduct that resulted in the suspension or expulsion and any remedial actions needed to prevent future occurrences of such conduct or related conduct. The conference shall include the appropriate school officials including any teacher directly involved with the conduct that resulted in the suspension or expulsion of the student, and the parent or guardian of the student or any agency having legal jurisdiction, care, custody, or control of the student. The Board of Education shall notify, in writing, the parents or guardians and all other parties of the time, place and agenda of any such conference. Failure of any party to attend this conference shall not preclude holding the conference.

Juveniles and the Law

The state of Missouri has made safety of children and the school environment a priority in every Missouri school district through House Bill 174 (HB 174). The bill contains stricter provisions for prosecution of children as adults, making juvenile court records available to schools, and tax/credit support for juvenile crime prevention measures in communities and schools.

Children with Disabilities

The Individuals with Disabilities Education Act 2001 provides specific disciplinary actions for the change in a student's placement or removal of students with disabilities who violate the Safe Schools Act – including 10-day and 45-day suspensions.

Food and Nutrition Services

Food and Nutrition Services

Breakfast and lunch is available to all students and staff. Prices for the current school year may be found on the monthly menu on the District's website. Lunch times will depend on each student's schedule. Students who are eligible for free or reduced-priced lunch are also eligible for free or

reduced-priced breakfast. Free/reduced-priced meal applications need to be turned in to the school before school starts and **a new application must be submitted each year**. You are responsible for paying for all meals until your application has been approved. Applications may be obtained during enrollment, at the Main School Office or completed online on the District's website at <http://www.schoolnutritionandfitness.com/index.php?sid=0306152235285801&page=lunchapps>

Students should bring their lunch money in an envelope marked with their **first and last name, teacher's name, ID#** and **room number**. If paying for more than one child per check, write each ID# and students' names on the check and indicate how the money should be distributed. **Please make checks payable to the SCHOOL and add FNS** to indicate Food and Nutrition Services (for example, Clardy-FNS, Lakewood-FNS). Money can also be added to a student's meal account online via a credit card at <https://www.mypaymentsplus.com/welcome>. The student's meal account is then debited as the student makes food purchases. Parents are welcome to have lunch with their children.

Parties/Treats

In order to prevent life-threatening situations due to many severe food allergies and medical needs and to comply with the District's current Board Policy (ADF), all foods and beverages provided and available to students during the school day must meet the U.S. Department of Agriculture (USDA) Smart Snack Guidelines. This includes, but is not limited to, foods and beverages provided or made available to students for celebrations, classroom parties and birthdays, regardless of the source of the food. As defined by the District's Board Policy ADF: **"the school day is the time period from the midnight before to 30 minutes after the official school day"**.

Non-food celebration ideas are welcomed and encouraged. Please contact your building principal for questions regarding non-food celebration ideas.

Board Policy ADF may be found here:

<https://simbli.eboardsolutions.com/Policy/ViewPolicy.aspx?S=110&revid=3ahgpEZEKuQsRKUDm2c4ng==&PG=6&st=wellness&mt=Exact>

The Food and Nutrition Department is offering parents the option of ordering birthday treats for their children from the school cafeteria. Parents may select from a variety of kid-friendly treats (view the school Website). Order your birthday treats two weeks in advance of your child's birthday from your cafeteria manager and the treats will be delivered to the classroom the day of the party.

Special Diets/Food Allergies

If your student requires a special diet or needs the school meal to be modified due to a medical condition, including food allergies, please complete the Medical Statement for Student's Requiring Special Meals. USDA regulation 7 CFR Part 15b requires a statement signed by a licensed physician and a parent signature to allow any changes or substitutions to the standard school meal. Only a MD, DO, PA or NP is authorized to sign the medical statement.

Please complete the Medical Statement for Students Requiring Special Meals form and give to your school nurse or fax to (816) 321-5447. Feel free to contact Andrea Wilhoit at (816) 321-6287 or at andrea.wilhoit@nkcschools.org for more information on how we can better meet the special diet needs of your student.

If your student's diet changes for any reason, a new Medical Statement must be filed before any changes are made to the student's diet. Only the current Medical Statement will be followed by the Food and Nutrition Services Department. You can request allergies be removed with an email or a written statement signed by the parent/guardian.

The Medical Statement for Students Requiring Special Meals Forms may be found by following the link:

<https://www.nkcschools.org/cms/lib/MO49000025/Centricity/domain/142/health%20services/medical-statement-meals.pdf>

Parents/guardians are responsible for sending meals from home for their student until the medical form is turned in and the school has had enough time to prepare a special menu and order in special foods (about two weeks). Per program regulations, no substitutions or modifications are allowed without the medical form completed and on file.

If your student's diet changes for any reason, a new Medical Statement must be filed before any changes are made to the student's diet. Only the current Medical Statement will be followed by the Food and Nutrition Services Department. You can request allergies be removed with an email or written statement.

Lunch Fees

Elementary:	Secondary:	Adult/Teacher:	Milk \$.65
Breakfast \$1.75	Breakfast \$1.80	Breakfast \$2.40	
Lunch \$3.00	Lunch \$3.25	Lunch \$4.25	

USDA Nondiscrimination Statement:

In accordance with Federal civil rights law and U.S. Department of Agriculture (USDA) civil rights regulations and policies, the USDA, its Agencies, offices, and employees, and institutions participating in or administering USDA programs are prohibited from discriminating based on race, color, national origin, sex, disability, age, or reprisal or retaliation for prior civil rights activity in any program or activity conducted or funded by USDA.

Persons with disabilities who require alternative means of communication for program information (e.g. Braille, large print, audiotape, American Sign Language, etc.), should contact the Agency (State or local) where they applied for benefits. Individuals who are deaf, hard of hearing or have speech disabilities may contact USDA through the Federal Relay Service at 800-877-8339. Additionally, program information may be made available in languages other than English.

To file a program complaint of discrimination, complete the USDA Program Discrimination Complaint Form (AD-3027) of found at any USDA office, or write a letter addressed to USDA and provide in the letter all of the information requested in the form. To request a copy of the complaint form, call 866-632-9992.

Submit your completed form or letter to USDA by:

(1) Mail: U.S. Department of Agriculture
Office of the Assistant Secretary for Civil Rights
1400 Independence Avenue, SW
Washington, D.C. 20250-9410;

(2) Fax: 202-690-7442; or

(3) Email: program.intake@usda.gov.

This institution is an equal opportunity provider.

ACADEMIC INFORMATION

Instruction and Assessment

High School Instructional Program

The High School Instructional Program is designed to provide students with the preparation necessary for success beyond graduation. Each student, with the assistance of the guidance counselors, completes an Individualized Career Plan upon entry into the high school program. This plan provides a blueprint for the coursework needed to fulfill graduation requirements. In addition, the individualized plan is designed to prepare each student for post-secondary studies and pursuit of career interests. See the **North Kansas City Schools Career Planning & Education Guide (CPEG)** for detailed information regarding course offerings by following the link: <https://www.nkcschools.org/Page/220>

Human Sexuality Instruction

The Board of Education recognizes that parents/guardians are the primary source of sexuality education for their children. The Board also recognizes that effective sexuality education, taught in concert with parents/guardians, helps students avoid risks to their health and academic success and prepares them to make informed decisions as adults. Therefore, pursuant to requirements of state law, if the district chooses to use any course materials and instruction relating to human sexuality and sexually transmitted diseases the materials and instruction shall be medically and factually accurate.

For further information please refer to district policies and regulations by following the link: Policy IGAEB <https://simbli.eboardsolutions.com/ePolicy/Policy.aspx?S=110&Sch=110&PC=IGAEB&Z=P&revNo=1.11&srch=sexuality&ktype=Exact&encu=xa9jwu0EeqNJP1IMR8zErI2Eu9hM2yurtmPs7R4uWoGGjTef44Fe0IFZlhp8siHml77y1xcwppplus6EwH2ovuEjEBslshDZvDmkWGPZMjh0v3eXIngjjw4KXmbGehxrAmYj06cyDIGfsAHHLnUa6o1slshzvGxirdj30hoR6wi0re0UrbHY8JGWvz2plusnDQg9nRcCp1oiG>

Textbooks & Supplies

The district will provide necessary textbooks in all basic instructional areas. Supplemental resources are available from the Library Media Center as well as teachers. Students will be charged replacement costs for any resources lost or damaged.

Specially Trained Teachers

Specially trained teachers are available for students who qualify for services in reading, speech and/or language, special education, gifted education, and English Language Learners (ELL). Guidance counselors are available to meet with individuals, small groups, and parents upon request. The district provides home/hospital instruction for students unable to attend school for an extended period of time due to a medical condition.

Field Trips

The Board believes that field trips often enhance the program of instruction and add much to the education of a student. Trips may be authorized by the superintendent or delegated representative when the activities contribute substantially to the achievement of desirable educational goals. All field trips should be planned with an educational purpose and in relation to a unit of study. To be educationally beneficial, a field trip requires thoughtful selection, careful advance preparation of the class and opportunities for students to assimilate the experience during and at the conclusion of the trip. To this

end, teachers and principals will be expected to consider the following factors in the selection of field trips:

- Value of the activity to the particular class group or class groups.
- Relationship of the field trip activity to a particular aspect of classroom instruction.
- Suitability of the activity and distance traveled in terms of the age level of students.
- Mode and availability of transportation.
- Cost of field trip.

Due to the increased cost of transportation, all field trips should be carefully scrutinized by the administration.

All parents of students who are eligible to participate in the field trip shall be notified of the activity.

Progress Reports

Progress reports are distributed every six weeks. Consult your school for a reporting schedule.

PowerSchool Student-Parent Portal

PowerSchool is a software program that provides students, parents and guardians access to a student's daily attendance and grades via the Internet. For more information about PowerSchool, currently offered to district middle and high school families, contact your student's home school.

A+ Schools Program

All North Kansas City Schools are designated as A+ Schools by the state of Missouri. This means that students who meet certain requirements are eligible to receive tuition reimbursement and general fees to any of Missouri's public community colleges or public vocational or technical schools. Consult your school's A+ Coordinator for more information about this program. The A+ Schools program created by the passage of Senate Bill 280 contains the following provisions for students graduating from designated A+ Schools. Please read the following carefully and refer to the Career Planning and Education Guide (CEP) for additional information.

Benefits

Students who meet the program requirements, receive tuition reimbursement to any of Missouri's public community colleges or public vocational or technical schools. Students must make a good faith effort to secure all available federal post-secondary student financial assistance funds that do not require payment in order to qualify for graduation. Also note, the Missouri legislature may revise the benefits of this program.

A+ Program Requirements

To be eligible for the financial incentives of the A+ Schools Program, a student must have:

1. Be a U.S. citizen or permanent resident.
2. Enter into a written agreement with your high school prior to graduation.
3. Attend a designated A+ high school for 3 years prior to graduation.
4. Graduate from an A+ designated high school with an overall grade point average of 2.5 or higher on a 4.0 scale.
5. Have at least a 95% attendance record overall for grades 9-12.
6. Perform at least 50 hours of unpaid tutoring or mentoring, of which up to 25% may include job shadowing prior to graduation.

7. Maintain a record of good citizenship and avoid the unlawful use of drugs and/or alcohol while in grades 9-12.
8. Have achieved a score of proficient or advanced on the Algebra I end of course exam or a high level DESE approved end-of-course exam in the field of mathematics (or a specified combination of ACT Math score and High School GPA as determined by the State).

Distinguished Achievement Program

North Kansas City Schools sets high expectations for all students. Those learners who are academically talented and motivated should strive to earn one of the district's diplomas of distinction, the **Gold Medallion Honors Diploma**, or the **International Baccalaureate Diploma**. Colleges and universities recognize honors diploma programs as the most rigorous course of study, and the district sends advance information to directors of admissions regarding requirements for both diplomas.

Honor graduates receive public recognition at Distinguished Achievement Program events (Honors Night) and at Graduation. Students are lauded for outstanding academic performance and for important academic research in printed programs and with special adornments on graduation robes. Gold Distinguished Achievement seals are placed on diplomas, and covers are gold to indicate the academic accomplishment.

Advanced Placement Courses

Advanced Placement (AP) courses are college-level courses taught at the high school by trained, qualified teachers using materials designed to prepare students for success on AP exams. Parents should visit the website of the college/university the student plans to attend to determine the policy regarding credit granted for AP courses/exams. Students should consult the most recent edition of the Program of Studies for AP course offerings.

Dual Credit Courses

Dual Credit courses are college-level classes taught at the high school by teachers who have met criteria established by Missouri's Coordinating Board for Higher Education and by the college/university granting credit. Students may receive one-half unit of high school credit for each semester of class and earn the designated number of college hours. It is important that parents check with the college/university the student plans to attend to ensure that credit will be accepted.

Honors Courses

The purpose of Honors Courses for students in the North Kansas City Schools is to address the cognitive and affective needs of high-achieving learners by providing an accelerated and enriched academic program. Honors Courses (based on a Pre-AP curriculum) empower students to complete rigorous academic work, be responsible for their own learning, and demonstrate progress toward mastery of district graduation goals.

eCAMPUS Fueled by Launch

The opportunity to take some high school courses in an online learning environment. Students may work on classes from school or home. Refer to the Career Planning and Education Guide (CPEG) for details.

International Baccalaureate Diploma Program (IBDP)

The International Baccalaureate degree is recognized by colleges and universities and is offered at more than 3,285 schools in 141 countries worldwide. Only 752 high schools in the United States, 10 in the state

of Missouri, offer the IB Diploma Program. North Kansas City High School is the site for this prestigious program for all interested students in our school district.

The International Baccalaureate (IB) Program is a two-year, pre-university course of study designed to meet the needs of highly motivated students and, at the same time, promote international understanding. Because of the IB Program's rigor, North Kansas City Schools offers two additional years of study as preparation for the IB. Students are encouraged to enroll in this Pre-International Baccalaureate program in Grades 9 and 10 and advance to IB courses for grades 11 and 12.

Students must earn minimum of 26 units of credit as outlined in the Program of Studies and the Diploma Options Supplement. The effectiveness of the IB Program is due not only to the depth of the individual courses, but also to the comprehensive nature of the total program. IB Diploma candidates take courses in six academic areas and must pass written examinations in all six areas, earning 24 points in order to qualify for the degree. Some subjects include an oral examination as well. IB Diploma candidates also participate in 150 hours of creativity, action, and service (CAS); take a unique course, Theory of Knowledge; and develop a 4,000-word extended essay. Refer to the Career Planning and Education Guide (CPEG) for additional information.

International Baccalaureate Diploma Program (IBCP)

To prepare students for the 21st Century, the International Baccalaureate has developed the IB Career related Program, an academic qualification designed to support schools and colleges that offer career related courses to their students. The newest of the four IB programs, the IBCP is offered in 216 schools worldwide. There are approximately 106 schools in the United States offering the IBCP. Like the IB Diploma program, schools that adopt IBCP are public, private, magnet, comprehensive, international, redesigned.

The IBCP provides the basis for effective collaboration in the workplace, additional training in a career related field, as well as improved mobility and flexibility in one's employment. The IBCP offers a learning and assessment program that promotes access to an IB education, school retention, responsibility for one's own actions, skills development, reflection of life experiences, and self-esteem through meaningful achievements.

Gold Medallion Honors Diploma

Requirements include:

- 3.2 minimum GPA
- 26 units of prescribed credit
- 8 units of the 26 must be advanced credit (Honors, Dual Credit, or Advanced Placement)
- Community Service, 100 pre-approved hours of community service, tutoring or mentoring
- School to Career Internship, 40 hours
- Research Methods (one semester) and Research & Exhibition (one semester)
- Senior Exhibition based upon Research & Exhibition semester course
- Comprehensive Portfolio, presentation of best work, extracurricular activity, and student reflection
- Perform at or above the 85th percentile on an 11th or 12th grade national standardized academic test

Please refer to the Career Planning and Education Guide (CPEG) for additional information.

Diploma Options

The **Career/College Readiness Diploma** graduates are recognized as having met entrance requirements for most Missouri Universities.

The **Gold Medallion Honors Diploma** is a rigorous honors program designed to meet all entrance requirements for the University of Missouri system as well as most major U.S. colleges and universities. Students who participate in the Honors Program in middle school should be well prepared for the challenge of the Gold Medallion Honors Diploma program.

The **AP Capstone Diploma (beginning with the Class of 2020)** Graduates receive honors and are recognized for completing the AP Capstone courses, earning a 3 or above on the assessments, as well as earning a 3 or above on four additional AP courses throughout their high school career.

The **International Baccalaureate Diploma (IBDP)** Graduates receive honors and are recognized for completing rigorous international curricula designed to meet the entrance requirements of the world's best universities.

The **International Baccalaureate Diploma Career-Related Program Certificate (IBCP)** Graduates receive honors and are recognized for completing rigorous international curricula combined with a career pathway to enter the workforce and/or to meet the entrance requirements of higher learning institutions.

Graduation Requirements

Paths to Graduation					
DIPLOMA OPTIONS:	<i>Career/College Readiness</i>	<i>Gold Medallion</i>	<i>AP Capstone</i>	<i>IBDP</i>	<i>IBCP</i>
ENGLISH LANGUAGE ARTS	4	4	4	4	4
MATHEMATICS	4	4	4	4	4
SCIENCE	3	3	3	4	4
SOCIAL STUDIES	3	4	3	3-4	3-4
FINE ARTS	1	1	1	1	1
PRACTICAL ARTS	1	1	1	1	1
PHYSICAL EDUCATION	1	1	1	1	1
HEALTH	0.5	0.5	0.5	0.5	0.5
PERSONAL FINANCE +	0.5+	0.5+	0.5+	0.5+	0.5+
ELECTIVES	8	4	6	1.5-4	.5-4
MODERN LANGUAGE		2		4	2
AP SEMINAR		1	1		1++
AP RESEARCH			1		
THEORY OF KNOWLEDGE				1.5	
PERSONAL AND PROFESSIONAL SKILLS					1.5-2

CAREER RELATED STUDY					3-4
TOTAL CREDITS REQUIRED	26	26	26	26	26

All students will be required to complete a service component

+ **Personal Finance** will be an on-line course, with blended support

++ **AP Seminar and AP Research** – Optional for students pursuing IBCP

Service to Community Hours Requirements

Service to Community hours requirement is based on our goal to prepare young adults to become active and productive citizens. We learn by doing, and service to community is one means of educating students to be good citizens. Service to Community Hours have proven to be beneficial in enhancing students' self-esteem while increasing growth in social awareness and social commitment.

The following Service to Community Hours guidelines were established by the Graduation Task Force in the fall of 2014 and are to be utilized as a guide for required Service to Community Hours for graduation.

- Service to Community is volunteer work for which no other credit or monetary compensation is received.
- Twenty (20) hours of Service to Community are a requirement for graduation from high school. A student will not participate in graduation ceremonies or receive a diploma if he or she has not performed the twenty (20) Service to Community Hours.
- The required Service to Community Hours for graduation are to be completed by the end of the first semester of the student's senior year.
- Students may begin accumulating hours following completion of 8th grade year.

Service to Community Hours General Guidelines

Students are responsible for making the necessary contact to schedule Service to Community Hours.

- All projects must be pre-approved by the Service to Community Coordinator.
- A supervisor present at the project location must sign Service to Community forms. All information on the form must be complete. Parent signatures in lieu of the supervisor will not be accepted without prior approval of the Service to Community Coordinator.
- All Service to Community forms must be turned in to the Service to Community Coordinator.
- New students who enroll the second semester of the senior year must complete five (5) hours of Service to Community if he or she enrolls before the last six weeks of school.
- Projects should be completed within the boundaries of the North Kansas City School District unless pre-approved by the Service to Community Coordinator.
- Service to Community Hours can apply for IB CAS requirements, IBCP community and service requirements, and A+ requirements.

Service to Community Forms and a List of Northland Charities can be found at:

<https://www.nkcschools.org/Page/4497>

District Assessment

The district has a comprehensive testing program K-12. Results are used to provide feedback regarding individual student performance, inform instruction designed to meet student-learning needs, determine student placement in support programs, and evaluate district curriculum and educational programming. Assessment results are made available within fifteen days of receipt. Missouri Assessment Program (MAP) assessment results are sent home in the fall.

High school students are expected to complete the following assessments:

- District-developed Benchmark assessments in communication arts, mathematics, science, and social studies content
- US/MO Constitution test (passing score required for graduation)
- Missouri Civics Education Initiative (beginning with class of 2021)
- Missouri Physical Fitness Test (freshmen)
- Missouri Assessment Program End-of-Course exams for courses specified by the state of Missouri
- Program specific exams: Technical Skills Attainment, Advanced Placement, and International Baccalaureate

Middle School students are expected to complete the following assessments:

- District-developed Benchmark assessments in communication arts, mathematics, science, and social studies content
- Math Placement Tests (spring)
- Missouri Physical Fitness Test (grade 7)
- Missouri Assessment Program grade-level and end-of-course achievement tests in the areas of communication arts, math, and science each spring
- Universal screenings as needed

All English Language Learners participate in the state WiDA ACCESS language fluency assessments mid-year.

District counselors can provide information regarding additional college and career entrance exams, including ACT, ASVAB, PSAT, SAT, and WorkKeys.

Progress Reports

Students receive progress reports four times per year. The purpose of these reports is to keep parents informed regarding a child's progress. **Parents are expected to sign and return the large envelope after each grading period.** Check the calendar on the inside cover of this handbook for specific distribution dates.

Promotion and Retention of Students

North Kansas City Schools is committed to the continuous development of students enrolled in the district's schools and to student achievement of the skills for the current grade assignment for promotion to a higher grade. In evaluating student achievement, each teacher will make use of all available information including results of teacher-made tests, other measures of skill and content mastery, standardized test results, and teacher observation of student performance. Students will normally progress annually from grade to grade when, in the judgment of the professional staff, it is in the best interest of the student involved. However, retention may be considered when, in the judgment of the professional staff, it is in the best interest of the student. **The final decision to promote or retain a student rests with the school administration.**

Extended Learning Time (XLT)

The summer school program offers mastery classes and is available to all District students at no charge. However, a fee may be charged for transportation. Brochures are sent home in early spring. If your child's teacher or counselor recommends the mastery XLT program, you are strongly encouraged to enroll your child in order to reinforce basic math and reading skills.

Homework Philosophy and Guidelines

Homework Objectives

Homework is an important part of a student's learning experience. It provides opportunities for students to practice skills and improve their understanding. It also provides additional time for students to complete work, conduct follow-up studies and develop good study habits.

In North Kansas City Schools, teachers assign homework to achieve the following objectives:

- Provide independent practice of learned concepts and/or skills
- Assist students in developing good independent work/study habits
- Promote student responsibility, time management, and self-discipline
- Encourage independent research skills
- Promote positive interaction between students and parents

Responsibilities

To promote homework as an extension of classroom experiences, the following guidelines have been developed to assist those working with students.

Student Responsibilities

- Records, completes, and returns assigned work on time.
- Assumes responsibility for completing work when absent from school.
- Establishes a time and location at home for work to be done.
- Communicates homework assignments with parents/guardians.
- Strives to complete work to the best of his/her ability.

Parent/Guardian Responsibilities

- Works with the student to develop an appropriate time and location to complete work and develop into a routine.
- Provides an environment conducive to completion of homework.
- Encourages and motivates the student but does not do the student's homework.
- Communicates with the teachers if concerns arise. □ Holds student accountable for completing work.

Teacher Responsibilities

- Provides meaningful tasks that support work introduced during class time.
- Acknowledges the activities and responsibilities of students outside of school and accepts that extenuating circumstances could arise that prevent students from completing work.
- Communicates with parents if concerns arise.
- Monitors homework assignments and provides feedback to students.
- Coordinates homework with other teachers/teams to avoid excessive homework on particular nights.
- Differentiates homework based on individual needs when appropriate.

Counselor Responsibilities

- Provides support groups when necessary to assist students in developing good study habits and effective time management practices.
- Assists the building support team in monitoring students in need of assistance.
- Helps students establish realistic goals and provide necessary support.

- Offers study-skills groups for selected students when needed.

Principal Responsibilities

- Communicates and monitors the district's homework guidelines.
- Individualizes the guidelines according to the school's/student's needs.
- Provides leadership for building support team to assist students when needed.

Time Allocation for High School Students

The amount of homework for the high school student will vary depending upon the course of study and the student's total load, including extracurricular activities and out-of-school responsibilities. Time management and effective study habits should be emphasized at the high school level. Departments should work collaboratively to allocate testing and other significant projects so that they do not fall on the same day.

Parent/Teacher Interactions

Parent/Teacher Conferences

We desire parental involvement and encourage parents to call the school to schedule a conference with teachers throughout the school year if they have concerns, questions, or comments. A conference can be arranged with an administrator, counselor, or an individual teacher. In order to protect instructional time and the learning environment, we ask that parents arrange to meet with the staff ahead of time and check in with the receptionist in the Main Office. Parent/Teacher conferences will be held following the end of the first grading period. We encourage all of our parents to take advantage of this opportunity.

Contacting Teachers

School efforts are most effective when there is cooperation between home and school. Parents are encouraged to call the child's teacher to discuss concerns. You may phone anytime during the school day and leave a message for a teacher. Telephones will not ring in the classroom during school hours, but you may leave a message and the teacher will return your call. You may also contact the teacher via e-mail.

Visits to Classrooms and District Events

The North Kansas City Board of Education encourages parents to be actively involved in their child's education. The District is also committed to maintaining an instructional climate that is conducive to student success. Visitors are asked to schedule visits in advance so as not to interfere with the instructional program. Visitors must check in at the office upon arrival and wear a visitor's badge.

Classroom observations are subject to several conditions outlined in board policy KK-AF. Third party observations are permitted if the observation is: legally required, in the best interest of the child or is otherwise designed to improve the district's educational program. Parents who wish a third-party observation must complete district form KK-AF to the principal. Parents will be notified if their request has been approved.

District events are a vital part of the total educational program and should be used as a means for developing wholesome attitudes, positive social interaction, good sportsmanship, and appropriate behavior. Patrons are encouraged to attend and exhibit good sportsmanship, citizenship, ethics, and integrity at all district events. Consequences for not adhering to appropriate behavior are outlined in district policy KK-AP.

Student visitors from other locations will not be allowed during school hours.

Student Attendance and Accountability

Attendance

As directed by the Board, the following procedures will be used to implement the district's attendance policy.

Definitions:

Attendance – A student is considered to be in attendance if the student is physically present in a class; participating in a district-sponsored district-approved activity; participating in a class through alternative methods or media as allowed by Board policy; receiving homebound services; or receiving services at another location pursuant to law or by arrangement of the district.

Parent – A parent, guardian or person acting as a parent in the absence of the parent or guardian. If the student is emancipated, the student will serve as the parent for purposes of this procedure.

Tardy – A student is tardy if the student arrives after the expected time class or school begins, as determined by the district. Tardiness will be counted as an absence in situations where the student arrives too late to have a meaningful participation in the class, lesson or activity.

Truancy – A student is truant if the student is absent from class or school without the knowledge and consent of the parents and the administration. A student is also considered truant if the student leaves school without the consent of the building administration or accumulates excessive unjustifiable absences, even with parental consent. If an absence is not cleared up within five (5) days, the student may be considered truant. Truancy is a type of unexcused absence.

Attendance Standards

An **excused absence** is defined as an absence from class resulting from illness or unforeseen circumstances which is verified by a parent **and includes proper documentation**. With proper documentation, the following absences will NOT count toward the attendance consequences as defined below:

1. Hospitalization
2. Mandatory court date
3. Religious observance
4. Medically documented illness
5. Documented Dental/Orthodontist appointment or doctor's appointment
6. Verified school counseling/office appointment
7. A school-based medical professional excuses the absence
8. School-related activities in which the student is a participant
9. History of chronic health problems, provided that proper documentation is filed with the Attendance Office or in Health Room
10. Death in the family
11. Two College visits (to be taken as a junior/senior)

A **verified absence** is defined as an absence from class resulting from illness or unforeseen circumstances which is verified by a parent. The following absences are examples of absences that will count toward the attendance consequences as defined below:

1. Oversleeping
2. Going "out of town"

3. No ride to school
4. Personal business
5. Activity camps
6. District/state contests or other school related activities in which student is not a participant.
7. Family vacations
8. Missing the bus
9. Needed at home
10. Car trouble
11. Other absences verified by parents

All other absences will be considered unexcused and will count toward the attendance consequences as defined below.

Communication to Parents and Students

Parent/guardian will receive a notice of attendance at the 6, 12, 15, and 18-week mark in the semester. The purpose of the notice is to inform the parent about their student’s status as it relates to the expectation of 90% attendance. In addition, the notice will address the possibility of percentage deductions per course if the 90% threshold is not achieved. The notice will also include a detailed schedule of opportunities for students to make-up time through study sessions outside of the regular school day. The student or parent may request of a copy of the student’s attendance report by contacting the school’s attendance office.

Consequences for Violations

A high school student whose attendance falls below 90% in one semester will receive a percentage deduction by course as outlined in the table below. If the student is failing a course, he/she will receive an “F”.

Attendance % By Course	% Grade Reduction
90%+	0%
85 - <90%	5%
80 - <85%	10%
75 - <80%	15%
70 - <75%	20%
65 - <70%	25%
60 - <65%	30%
55 - <60%	35%
50 - <55%	40%

Review/Appeal Process

If the student or parent feels that justifiable or extraordinary circumstances have contributed to not attaining the 90% threshold, the student and parent may appeal to the Attendance Review Committee. An appeal form must be completed and filed with the Attendance Office by the end of the semester in which the absences occurred. This waiver should include documentation of illness, funeral or family emergency from a medical doctor, dentist, minister, or other official source. The review by the Attendance Review Committee shall be held within a reasonable time following the end of the semester. If no appeal request form is received by the end of the semester, then the decision to deduct percentage points from a student’s grade(s) for the class(es) will stand.

The Attendance Review Committee will consider the reasons for all the student's absences. The committee will consider all relevant information including whether:

- The appeal form was returned to the attendance office by the end of the semester in which the absences occurred.
- The student has supplied reasons for each absence with appropriate documentation.

The possible outcomes from an appeal to the Attendance Review Committee:

1. The decision to deduct percentages for the class will stand.
2. Percentage points are reinstated.
3. Student is assigned make-up time for class time missed. Once the student makes up the time missed, percentage points will be reinstated.

The outcome from the Attendance Review Committee will be communicated to the parents by phone and by written communication.

In accordance with due process, the building decision may be appealed through the Academic Services Department and the office of the Deputy Director of Secondary Education.

The district will contact the Children’s Division (CD) of the Department of Social Services or the local prosecutor in cases where the district has a reasonable suspicion that a student’s lack of attendance constitutes education neglect on the part of the parents or that parents are in violation of the compulsory attendance law. No such action will be taken unless other strategies and interventions have been implemented and proven ineffective.

Reporting Absences

All schools have a 24-hour attendance line. In the event that an illness or other reasonable circumstance prevents your child from attending, please inform the school. If your child will miss several days, you only need to call the first day. If no contact is made by 9:00 a.m. for early schools and 9:30 a.m. for late schools, every attempt will be made to reach a parent or emergency contact to verify the reason for the absence. Our intent with the requirement for verification of absences, late arrivals, and early departures is that parents and school personnel always know where every student is during school hours.

Late to School Procedure

When a student arrives late, he/she must check in with the administrative assistant to obtain a pass to class. For the safety of the student and to verify the reason for the late arrival, parents must sign in their child in the office. Tardiness/late arrival will affect your child’s attendance percentage.

Early to Leave Procedure

For the safety of the student and to verify the reason for leaving, parents must sign out their child in the office. The parent must notify the office in advance if someone other than the parent is picking up the child. Leaving early will affect your child’s attendance percentage.

Makeup Work Due to Absences

If a student wants his/her “makeup” work when he/she is ill, the parent should call before 9:30 a.m. and not plan to pick up the work in the office until after 3:00 p.m.

Planned Extended Absences

The instructional program is designed for interaction between the teacher and student that is not possible when students are absent for extended periods of time. Parents are encouraged to plan vacations/trips

during times when school is not in session. Schools will provide instructional materials/assignments for up to five (5) school days of consecutive absence with 48 hours prior notice. Due to state attendance reporting guidelines, the absence will be “excused absent” and will negatively affect the child’s attendance percentage.

Textbooks and Supplies

The district will provide necessary textbooks in all basic instructional areas. Additional resources are available from the Library Media Center and teachers. Students will be charged replacement costs for any resources lost or damaged.

Dress and Grooming

The primary responsibility for a student’s school dress and grooming rests with the student’s parents/guardians. Proper dress or grooming will ensure your child can participate in the total school program. This includes clothing suited for outdoor play as well as gym shoes for PE. The Board of Education expects student dress and grooming to be neat, clean and in good taste so that each student may share in promoting a positive, healthy, and safe atmosphere within the school district. Student dress and grooming will be the responsibility of the individual and parents/guardian, within the following guidelines:

- Dress that promotes the use of drugs, alcohol, tobacco, criminal, or sexual activity will be prohibited.
- No see-through clothing or underclothing worn as an outer garment.
- Boxer shorts, biker pants, overly tight or short garments are not allowed.
- No bare backs or midriffs.
- Tank tops open below the armpit must be worn with an undershirt.
- Hats, head scarves, caps and sunglasses are not allowed to be worn inside the building. The district may make an exception to this provision if the student must wear head garb as a basic tenant of the student’s religion.
- Dress and grooming will not disrupt the educational environment.

Public Notice for Parents of Students with Disabilities

All responsible public agencies are required to locate, evaluate, and identify children with disabilities who are under the jurisdiction of the agency, regardless of the severity of the disability, including children attending private schools, highly mobile children, such as migrant and homeless children, and children who are suspected of having a disability and in need of special education even though they are advancing from grade to grade.

North Kansas City Schools assures that it will provide a free, appropriate education (FAPE) to all eligible children with disabilities between the ages of 3 and 21 under its jurisdiction. Disabilities include autism, visual impairment/blindness, emotional disorders, hearing impairment and deafness, mental retardation, multiple disabilities, orthopedic impairment, other health impairments, specific learning disabilities, speech or language impairment, traumatic brain injury, and young children with a developmental delay.

North Kansas City Schools assures that it will provide information and referral services necessary to assist the State in the implementation of early intervention services for infants and toddlers eligible for the Missouri First Steps program.

North Kansas City Schools assures that personally identifiable information collected, used, or maintained by the agency for the purposes of identification, evaluation, placement, or provision of FAPE of children

with disabilities may be inspected and/or reviewed by their parents/guardians. Parents/guardians may request amendment to the educational record if the parent/guardian believes the record is inaccurate, misleading, or violates the privacy and/or other rights of their child. Parents have the right to file complaints with the U.S. Department of Education or the Missouri Department of Elementary and Secondary Education concerning alleged failures by the district to meet the requirements of the Family Educational Rights and Privacy Act (FERPA).

North Kansas City Schools have developed a Local Compliance Plan for the implementation of State Regulations for the Individuals with Disabilities Education Act (IDEA). This plan contains the agency's policies and procedures regarding storage, disclosure to third parties, retention and destruction of personally identifiable information and the agency's assurances that services are provided in compliance with the General Education Provision Act (GEPA). This plan may be reviewed at Pupil Services/Doolin Center in the District Administrative Center, 2000 NE 46th Street, Kansas City, MO 64116, from 9:00 AM to 4:00 P.M. on days that school is in session.

Local school districts in the State of Missouri are required to conduct an annual census of all children with disabilities or suspected disabilities from birth to age twenty-one (21) that reside in the district. This census must be compiled by December 1st of each year. This information is treated as confidential and must include: the name of the child; parent/legal guardian's name and address; birth date and age of the child; the child's disability; and the services provided to the child. If you have a child with a disability or know of a child with a disability who is not attending the public school, please contact the Director of Pupil Services, at (816)321-3848. This notice will be provided in native languages as appropriate.

Specially Trained Teachers

Specially trained teachers are available for students who qualify for services in reading, special education, gifted education (SAGE), and English Language Learners (ELL). In addition to delivering class lessons on personal and social development, the counselor is available to meet with individuals, small groups, and parents upon request. Parents of students who receive these services will be notified.

Field Trips

The Board believes that field trips often enhance the program of instruction and add much to the education of a student. Trips may be authorized by the superintendent or delegated representative when the activities contribute substantially to the achievement of desirable educational goals. All field trips should be planned with an educational purpose and in relation to a unit of study. To be educationally beneficial, a field trip requires thoughtful selection, careful advance preparation of the class and opportunities for students to assimilate the experience during and at the conclusion of the trip. To this end, teachers and principals will be expected to consider the following factors in the selection of field trips:

- Value of the activity to the particular class group or class groups.
- Relationship of the field trip activity to a particular aspect of classroom instruction.
- Suitability of the activity and distance traveled in terms of the age level of students.
- Mode and availability of transportation.
- Cost of field trip.

Due to the increased cost of transportation, all field trips should be carefully scrutinized by the administration.

All parents of students who are eligible to participate in the field trip shall be notified of the activity.

Reading/Senate Bill 319

Senate Bill 319 (SB319) was enacted to ensure that by the end of the third grade year every student is able to read well, and that the schools develop plans to assist students who have reading difficulties. Third graders reading more than a year below grade level must be identified. A Personalized Reading Education Plan (PREP) would be developed for the fourth-grade year. The PREP would include instruction from the reading specialist as well as instruction outside the regular school day for remediation. After this intervention, students still determined to be more than a year below grade level must be retained in the fourth grade. Some students are exempt from the requirements of the law due to identified special needs including English Language Learners (ELL), special education students, students who already have written plans addressing reading (504 plans), and students who have been identified to have low cognitive abilities that prevent them from reading at grade level.

IEP Information

Any portion of a student's individualized education program (IEP) that is related to demonstrated or potentially violent behavior shall be provided to any teacher or other school district employees who are directly responsible for the student's education or who otherwise interact with the student on an educational basis while acting within the scope of their assigned duties.

Technology

Technology Usage

The North Kansas City School District's technology exists for the purpose of maximizing the educational opportunities and achievement of district students. Research shows that students who have access to technology improve achievement. In addition, technology assists with the professional enrichment of the staff and Board and increases engagement of students' families and other patrons of the district, all of which positively impact student achievement. The district will periodically conduct a technology census to ensure that instructional resources and equipment that support and extend the curriculum are readily available to teachers and students.

The purpose of this policy is to facilitate access to district technology and to create a safe environment in which to use that technology.

Definitions

For the purposes of this policy and related procedures and forms, the following terms are defined:

Technology Resources – Technologies, devices and resources used to access, process, store or communicate information. This definition includes, but is not limited to: computers, modems, printers, scanners, fax machines and transmissions, telephonic equipment, audio-visual equipment, Internet, electronic mail, electronic communications devices and services, multi-media resources, hardware, and software.

User – Any person who is permitted by the district to utilize any portion of the district's technology resources including, but not limited to, students, employees, School Board members and agents of the school district.

User Identification (ID) – Any identifier that would allow a user access to the district’s technology resources or to any program including, but not limited to, email and Internet access.

Password – A unique word, phrase or combination of alphabetic, numeric, and non-alphanumeric characters used to authenticate a user ID as belonging to a user.

Authorized Users

The district’s technology resources may be used by authorized students, employees, School Board members and other persons such as consultants, legal counsel, and independent contractors. All users must agree to follow the district’s policies and procedures. Use of the district’s technology resources is a privilege, not a right. No potential user will be given an ID, password, or other access to district technology if he or she is considered a security risk by the superintendent or designee.

User Privacy

A user does not have a legal expectation of privacy in the user’s electronic communications or other activities involving the district’s technology resources, including e-mail and access to the Internet or network drives. By using the district’s network and technology resources, all users are consenting to having their electronic communications and all other use monitored by the district. A user ID with email access will only be provided to authorized users on condition that the user consents to interception of or access to all communications accessed, sent, received, or stored using district technology.

Electronic communications, downloaded material and all data stored on the district’s technology resources, including files deleted from a user’s account, may be intercepted, accessed, or searched by district administrators or designees at any time in the regular course of business to protect users and district equipment. Any such search, access or interception will be reasonable in inception and scope and shall comply with all applicable laws.

Technology Administration

The Board directs the superintendent or designee to create procedures governing technology usage and to assign trained personnel to maintain the district’s technology in a manner that will protect the district from liability and will protect confidential student and employee information retained on or accessible through district technology resources.

Administrators of computer resources may suspend access to and/or availability of the district’s technology resources to diagnose and investigate network problems or potential violations of the law or district policies and procedures. All district technology resources are considered district property. The district may maintain or improve technology resources at any time. The district may remove, change, or exchange hardware or other technology between buildings, classrooms, or users at any time without prior notice. Authorized district personnel may install or remove new programs or information, install new equipment, upgrade any system, or enter any system to correct problems at any time.

Content Filtering and Monitoring

The district will monitor the online activities of minors and operate a technology protection measure (“filtering/blocking device”) on the network and/or all computers with Internet access, as required by law. The filtering/blocking device will be used to protect against access to visual depictions that are obscene or harmful to minors or are child pornography, as required by law. Filtering/Blocking devices are not foolproof, and the district cannot guarantee that users will never be able to access offensive materials

using district equipment. Evasion or disabling, or attempting to evade or disable, a filtering/blocking device installed by the district is prohibited.

The superintendent, designee or the district's technology administrator may disable the district's filtering/blocking device to enable a non-student user access for bona fide research or for other lawful purposes. In making decisions to disable the district's filtering/blocking device, the administrator shall consider whether the use will serve a legitimate educational purpose or otherwise benefit the district.

Closed Forum

The district's technology resources are not a public forum for expression of any kind and are to be considered a closed forum to the extent allowed by law. The district's web page will provide information about the school district but will not be used as an open forum.

All expressive activities involving district technology resources that students, parents/guardians and members of the public might reasonably perceive to bear the imprimatur of the district and that are designed to impart particular knowledge or skills to student participants and audiences are considered curricular publications. All curricular publications are subject to reasonable prior restraint, editing and deletion on behalf of the school district for legitimate pedagogical reasons. All other expressive activities involving the district's technology are subject to reasonable prior restraint and subject matter restrictions as allowed by law and Board policies.

Records Retention

Trained personnel shall establish a retention schedule for the regular archiving or deletion of data stored on district technology resources that complies with the *Public School District Records Retention Manual* as well as the *General Records Retention Manual* published by the Missouri Secretary of State. In the case of pending or threatened litigation, the district's attorney will issue a litigation hold directive to the superintendent or designee.

The litigation hold directive will override any records retention schedule that may have otherwise called for the transfer, disposal, or destruction of relevant documents until the hold has been lifted by the district's attorney. E-mail and computer accounts of separated employees that have been placed on a litigation hold will be maintained by the district's information technology department until the hold is released. No employee who has been so notified of a litigation hold may alter or delete any electronic record that falls within the scope of the hold. Violation of the hold may subject the individual to disciplinary actions, up to and including termination of employment, as well as personal liability for civil and/or criminal sanctions by the courts or law enforcement agencies.

Violations of Technology Usage Policies and Procedures

Use of technology resources in a disruptive, manifestly inappropriate, or illegal manner impairs the district's mission, squanders resources and shall not be tolerated. Therefore, a consistently high level of personal responsibility is expected of all users granted access to the district's technology resources. Any violation of district policies or procedures regarding technology usage may result in temporary, long-term, or permanent suspension of user privileges. User privileges may be suspended pending investigation into the use of the district's technology resources.

Employees may be disciplined or terminated, and students suspended or expelled, for violating the district's technology policies and procedures. Any attempted violation of the district's technology

policies or procedures, regardless of the success or failure of the attempt, may result in the same discipline or suspension of privileges as that of an actual violation.

Damages

All damages incurred by the district due to a user's intentional or negligent misuse of the district's technology resources, including loss of property and staff time, will be charged to the user. District administrators have the authority to sign any criminal complaint regarding damage to district technology.

No Warranty/No Endorsement

The district makes no warranties of any kind, whether expressed or implied, for the services, products or access it provides. The district's technology resources are available on an "as is, as available" basis.

The district is not responsible for loss of data, delays, non-deliveries, mis-deliveries, or service interruptions. The district does not endorse the content nor guarantee the accuracy or quality of information obtained using the district's technology resources.

Student Users

Students will be given access to the district's technology resources and upon logging in agree to abide by the district usage policy and procedures.

General Rules and Responsibilities

The following rules and responsibilities will apply to all users of the district's technology resources:

1. Applying for a user ID under false pretenses or using another person's ID or password is prohibited.
2. Sharing user IDs or passwords with others is prohibited and users will be responsible for using the ID or password. A user will not be responsible for theft of passwords and IDs but may be responsible if the theft was the result of user negligence.
3. Deleting, examining, copying, or modifying files or data belonging to other users without their prior consent is prohibited.
4. Mass consumption of technology resources that inhibits use by others is prohibited.
5. Use of district technology, including the telephone system, for soliciting, advertising, fundraising, commercial purposes or for financial gain is prohibited, unless authorized by the district.
6. Accessing fee services without permission from an administrator is prohibited. A user who accesses such services without permission is solely responsible for all charges incurred.
7. Users are required to obey all laws, including criminal, copyright, privacy, defamation, and obscenity laws. The school district will render all reasonable assistance to local, state, or federal officials for the investigation and prosecution of persons using district technology in violation of any law.
8. The district prohibits the use of district technology resources to access, view or disseminate information that is pornographic, obscene, child pornography, harmful to minors, obscene to minors, libelous, pervasively indecent, or vulgar, or advertising any product or service not permitted to minors.
9. Accessing, viewing, or disseminating information on any product or service not permitted to minors is prohibited unless under the direction and supervision of district staff for curriculum related purposes.
10. The district prohibits the use of district technology resources to access, view or disseminate information that constitutes insulting or fighting words, the very expression of which injures or harasses other people (e.g., threats of violence, defamation of character or of a person's race,

religion or ethnic origin); presents a clear and present likelihood that, because of their content or their manner of distribution, they will cause a material and substantial disruption of the proper and orderly operation and discipline of the school or school activities; or will cause the commission of unlawful acts or the violation of lawful district policies and procedures.

11. The district prohibits any use that violates any person's rights under applicable laws, and specifically prohibits any use that has the purpose or effect of discriminating or harassing any person based on race, color, religion, sex, national origin, ancestry, disability, age, pregnancy or use of leave protected by the Family and Medical Leave Act.
12. The district prohibits any unauthorized intentional or negligent action that damages or disrupts technology, alters its normal performance, or causes it to malfunction. The district will hold users responsible for such damage and will seek both criminal and civil remedies, as necessary.
13. Users may only install and use properly licensed software, audio or video media purchased by the district or approved for use by the district. All users will adhere to the limitations of the district's technology licenses. Copying for home use is prohibited unless permitted by the district's license and approved by the district.
14. At no time will district technology or software be removed from the district premises, unless authorized by the district.
15. All users will use the district's property as it was intended. Technology resources will not be moved or relocated without permission from an administrator. All users will be held accountable for any damage they cause to district technology resources.

Electronic Devices

Possession of beepers, pagers, radios, MP3, iPod, CD players, laser pointers, portable game players, etc., are not appropriate in a school setting. The school is not responsible for damaged, lost, or stolen items.

Cell Phones

We recognize that parents may want their student to have a mobile phone for safety reasons. However, mobile phones do present possible disruptions to the educational process. Therefore, appropriate steps must be taken to prevent disruptions.

In general, the following guidelines will be used:

- The mobile phone will be the child's and parent/guardian's responsibility at all times.
- The school is not responsible for damaged, lost or stolen mobile phones.
- The mobile phone will be turned off during the instructional school day.
- If guidelines are violated, the privilege of the mobile phone may be revoked.

Security and Unauthorized Access

All users shall immediately report any security problems or misuse of the district's technology resources to a teacher or administrator.

No person will be given access to district technology if he or she is considered a security risk by the superintendent or designee.

1. Use of district technology resources in attempting to gain or gaining unauthorized access to any technology system or the files of another is prohibited.
2. Use of district technology to connect to other systems, in evasion of the physical limitations of the remote system, is prohibited.
3. The unauthorized copying of system files is prohibited.
4. Intentional or negligent attempts, whether successful or unsuccessful, to interfere with the ability of others to utilize any district technology are prohibited.

5. Any attempts to secure a higher level of privilege on the technology resources without authorization are prohibited.
6. The introduction of computer viruses, hacking tools or other disruptive or destructive programs into a district computer, network or any external networks is prohibited.

Online Safety, Disclosure, Use and Dissemination of Personal Information

1. All students will be instructed on the dangers of sharing personal information about themselves or others over the Internet.
2. Student users are prohibited from sharing personal information about themselves or others over the Internet, unless authorized by the district.
3. Student users shall not agree to meet with someone they have met online without parental approval.
4. A student user shall promptly disclose to his or her teacher or another school employee any message the user receives that is inappropriate or makes the user feel uncomfortable.
5. Users shall receive or transmit communications using only district-approved and district managed communication systems. For example, users may not use web-based e-mail, messaging, videoconferencing, or chat services, except in special cases where arrangements have been made in advance and approved by the district.
6. All district employees will abide by state and federal law, Board policies and district rules including, but not limited to, policy JO and regulation JO-R when communicating information about personally identifiable students.
7. Employees shall not transmit confidential student information using district technology, unless designated for that use. Employees will take precautions to prevent negligent disclosure of student information or student records.
8. No curricular or non-curricular publication distributed using district technology will include the address, phone number or e-mail address of any student without permission.

Electronic Mail (Email)

A user is responsible for all e-mail originating from the user's e-mail account.

1. Forgery or attempted forgery of e-mail messages is illegal and is prohibited.
2. Unauthorized attempts to read, delete, copy, or modify e-mail of other users are prohibited.
3. All users must adhere to the same standards for communicating electronically that are expected in the classroom and that are consistent with district policies and procedures.
4. Users must obtain permission from the superintendent or designee before sending any district wide e-mail messages.

Exceptions

Exceptions to district rules will be made for district employees or agents conducting an investigation of a use that potentially violates the law, district policies or procedures. Exceptions will also be made for technology administrators who need access to district technology resources to maintain the district's resources or examine and delete data stored on district computers as allowed by the district's retention policy.

Waiver

Any user who believes he or she has a legitimate educational purpose for using the district's technology in a manner that may violate any of the district's policies or procedures may request a waiver from the building principal, superintendent, or their designees. In making the decision to grant a waiver to a student, the administrator shall consider the purpose, age, maturity, and level of supervision involved.

Social Media Guidelines for Students

All student social media accounts (e.g., Facebook, Twitter, etc.) will be PERSONAL accounts. School related pages should be created by school personnel such as an activity sponsor, coach, teacher, or administrator.

- Be aware of what you post online. Social media venues are very public. What you contribute leaves a digital footprint for all to see. Do not post anything you wouldn't want friends, enemies, parents, teachers, or a future employer to see.
- Follow the school's code of conduct when writing online. It is acceptable to disagree with someone else's opinions, however, do it in a respectful way. Make sure that criticism is constructive and not hurtful. What is inappropriate in the classroom is inappropriate online.
- Be safe online. Never give out personal information, including, but not limited to, last names, phone numbers, addresses, exact birthdates, and pictures. Do not share your password with anyone besides your teachers and parents.
- Linking to other Websites to support your thoughts and ideas is recommended. However, be sure to read the entire article prior to linking to ensure that all information is appropriate for a school setting.
- Do your own work! Do not use other people's intellectual property without their permission. Be aware that it is a violation of copyright law to copy and paste other's thoughts. It is good practice to hyperlink to your sources.
- Be aware that pictures may also be protected under copyright laws. Verify you have permission to use the image.
- How you represent yourself online is an extension of yourself. Do not misrepresent yourself by using someone else's identity.
- Blog and wiki posts should be well written. Follow writing conventions including proper grammar, capitalization, and punctuation. If you edit someone else's work, be sure it is in the spirit of improving the writing.
- If you run across inappropriate material that makes you feel uncomfortable, or is not respectful, tell a parent or teacher right away.
- Students who do not abide by these terms and conditions may lose their opportunity to take part in the project and/or access to future use of online tools. Please reference the district's Acceptable Use Policy online at: Policy EHB
<https://simbli.eboardsolutions.com/ePolicy/policy.aspx?PC=EHB&Sch=110&S=110&C=&RevNo=1.01&T=A&Z=P&St=ADOPTED&PG=6&SN=true>

Also, please refer to Board policy regarding Student Discipline addressing the consequences, including suspension or expulsion, for students whose conduct is prejudicial to good order and discipline in the schools or impairs the morale or good conduct of other students.

<https://simbli.eboardsolutions.com/ePolicy/policy.aspx?PC=JG-11&Sch=110&S=110&C=&RevNo=1.11&T=A&Z=A&St=ADOPTED&PG=6&SN=true>

Social Media Guidelines for Parents

Classroom blogs and other social media are powerful tools. They create communication and collaboration opportunities between students, parents, teachers, and other district personnel, and can have a positive impact on learning. North Kansas City Schools encourages parents to view and participate by adding comments on district/school/teacher sponsored social media sites when appropriate (including Facebook, Twitter, SeeSaw and Canvas).

Parents are asked to adhere to the following guidelines:

- Parents will receive communication from teacher prior to their child’s involvement in any project using online social media applications, i.e., blogs, wikis, podcast, etc.
- Parents should not attempt to destroy or harm any information online.
- Parents should not use classroom social media sites for any illegal activity, including violation of data privacy laws.
- Parents are highly encouraged to read and/or participate in social media.
- Parents should not distribute information that might be deemed personal about other students via social media.
- Parents should not upload or include any information that does not also meet the **Student Guidelines**.
- Parents experiencing concerns with their student’s education, school environment, school activities and/or interaction with a teacher or administrator are encouraged to speak to school and/or District Leadership BEFORE turning to outside sources such as the media for resolution. Please work through District channels first.

For additional information on the district’s Acceptable Use Policy, visit:

<https://simbli.eboardsolutions.com/ePolicy/policy.aspx?PC=JG-R1&Sch=110&S=110&C=&RevNo=1.11&T=A&Z=A&St=ADOPTED&PG=6&SN=true>

Be a responsible digital citizen and remember to **THINK** before sharing on social media!

- T – Is it **TRUE**?
- H – Is it **HELPFUL**?
- I – Is it **INSPIRING**?
- N – Is it **NECESSARY**?
- K – Is it **KIND**?

Parents as Teachers

Parents as Teachers (PAT) gives parents knowledge in language development, intellectual growth, motor skills, and the parent-child relationship. When enrolled in North Kansas City Parents as Teacher, families with children birth to kindergarten will receive FREE:

- Certified parent educator home visits
- Health screening
- Developmental screening
- Monthly Parent-Child Activity

Screening opportunities are available for those children from three months to kindergarten. The Parents as Teachers office number is 816-321-5453.

Missouri Department of Elementary and Secondary Education
Every Student Succeeds Act of 2015 (ESSA)
COMPLAINT PROCEDURES

This guide explains how to file a complaint about any of the programs¹ that are administered by the Missouri Department of Elementary and Secondary Education (the Department) under the Every Student Succeeds Act of 2015 (ESSA)².

Missouri Department of Elementary and Secondary Education Complaint Procedures for ESSA Programs Table of Contents	
General Information 1. What is a complaint under ESSA? 2. Who may file a complaint? 3. How can a complaint be filed?	
Complaints filed with LEA 4. How will a complaint filed with the LEA be investigated? 5. What happens if a complaint is not resolved at the local level (LEA)?	Complaints filed with the Department 6. How can a complaint be filed with the Department? 7. How will a complaint filed with the Department be investigated? 8. How are complaints related to equitable services to nonpublic school children handled differently?
Appeals 9. How will appeals to the Department be investigated? 10. What happens if the complaint is not resolved at the state level (the Department)?	

1. What is a complaint?

For these purposes, a complaint is a written allegation that a local education agency (LEA) or the Missouri Department of Elementary and Secondary Education (the Department) has violated a federal statute or regulation that applies to a program under ESSA.

2. Who may file a complaint?

Any individual or organization may file a complaint.

3. How can a complaint be filed?

Complaints can be filed with the LEA or with the Department.

4. How will a complaint filed with the LEA be investigated?

Complaints filed with the LEA are to be investigated and attempted to be resolved according to the locally developed and adopted procedures.

5. What happens if a complaint is not resolved at the local level (LEA)?

A complaint not resolved at the local level may be appealed to the Department.

¹ Programs include Title I, A, B, C, D, Title II, Title III, Title IV, A, Title V
² In compliance with ESSA Title VIII-Part C, Sec. 8304(a)(3)(C)

Local education agencies are required to disseminate, free of charge, this information regarding ESSA complaint procedures to parents of students and appropriate private school officials or representatives.

6. How can a complaint be filed with the Department?

A complaint filed with the Department must be a written, signed statement that includes:

1. A statement that a requirement that applies to an ESSA program has been violated by the LEA or the Department, and
2. The facts on which the statement is based and the specific requirement allegedly violated.

7. How will a complaint filed with the Department be investigated?

The investigation and complaint resolution proceedings will be completed within a time limit of forty-five calendar days. That time limit can be extended by the agreement of all parties.

The following activities will occur in the investigation:

1. **Record.** A written record of the investigation will be kept.
2. **Notification of LEA.** The LEA will be notified of the complaint within five days of the complaint being filed.
3. **Resolution at LEA.** The LEA will then initiate its local complaint procedures in an effort to first resolve the complaint at the local level.
4. **Report by LEA.** Within thirty-five days of the complaint being filed, the LEA will submit a written summary of the LEA investigation and complaint resolution. This report is considered public record and may be made available to parents, teachers, and other members of the general public.
5. **Verification.** Within five days of receiving the written summary of a complaint resolution, the Department will verify the resolution of the complaint through an on-site visit, letter, or telephone call(s).
6. **Appeal.** The complainant or the LEA may appeal the decision of the Department to the U.S. Department of Education.

8. How are complaints related to equitable services to nonpublic school children handled differently?

In addition to the procedures listed in number 7 above, complaints related to equitable services will also be filed with the U.S. Department of Education, and they will receive all information related to the investigation and resolution of the complaint. Also, appeals to the United States Department of Education must be filed no longer than thirty days following the Department's resolution of the complaint (or its failure to resolve the complaint).

9. How will appeals to the Department be investigated?

The Department will initiate an investigation within ten days, which will be concluded within thirty days from the day of the appeal. This investigation may be continued beyond the thirty day limit at the discretion of the Department. At the conclusion of the investigation, the Department will communicate the decision and reasons for the decision to the complainant and the LEA. Recommendations and details of the decision are to be implemented within fifteen days of the decision being delivered to the LEA.

10. What happens if a complaint is not resolved at the state level (the Department)?

The complainant or the LEA may appeal the decision of the Department to the United States Department of Education.