

MISSION STATEMENT

In a community that fosters academic excellence, ethical responsibility, and global engagement, Pacific Ridge School prepares students for college and a purposeful life.

Head of School

Dr. Bob Ogle

College Guidance

Rachel E. Petrella, Executive Director
760.448.9842
rpetrella@pacificridge.org

Emily T. Moscol, Director
760.448.9898
emoscol@pacificridge.org

Danny Irving, Director
760.448.9881
dirving@pacificridge.org

Priyanka Singh, Associate Director
760.448.9838
psingh@pacificridge.org

Class of 2024

112 SENIORS

100% hold a passport

69 compete on **at least 1** PRS team

64 visual or performing artists

19 multilingual households*

11 speak English as a second language

9 born outside the U.S.

8 first in their family to attend college

*Chinese, German, Korean, Russian, Spanish, Swedish, Vietnamese

Advanced Placement

175 exams
90 Juniors
82 scored 3+
66 scored 4-5

Standardized Testing, Averages

SAT 1344

692
EBRW

681
MATH

ACT 31

ENGLISH 32
READING 33
MATH 29
SCIENCE 32

Testing data for current seniors is based on the small percentage taking the SAT (34) and/or the ACT (10). Pacific Ridge School is not a testing center.

9 Recognized by
**NATIONAL MERIT
SCHOLARSHIP
CORPORATION**

STUDENTS & FACULTY

Pacific Ridge School draws students from over 20 San Diego County communities. 38% of students identify as a student of color.

4.3
million
awarded in
tuition assistance

7:1 student-to-teacher ratio

30%
students receive
tuition
assistance

Pacific Ridge School maintains an average class size of 15, allowing talented and experienced teachers (70% with advanced degrees) to engage in working partnerships with students and extend the educational experience beyond the classroom.

THE SCHOOL

Founded in 2007, Pacific Ridge School is an independent, coeducational, college preparatory day school in Carlsbad, California, serving 688 students in grades 6-12. Accredited by WASC, Pacific Ridge School is a member of NAIS, CAIS, the College Board, the ERB, NACAC, WACAC, and ACCIS.

GRADUATION & DIPLOMA REQUIREMENTS

Pacific Ridge School's curriculum and graduation requirements exceed those of the State of California diploma and UC/CSU eligibility. All courses required for graduation must be completed on the Pacific Ridge campus.

- English: 4 years
- Math: 3 years (Geometry through Algebra 2 /Trigonometry)
- History: 3 years (Ancient & Modern World History, U.S. History)
- Science: 3 years (Integrated Biology & Chemistry I & II)
- Language: 3 years of same language in Upper School
- Arts: 2 years
- Health: 1 trimester, PE/Athletics: 5 trimesters
- Service Learning: 2 years
- Sophomore & Junior Project & Senior Signature

ACADEMIC PROGRAM & REPORTING

Deliberate curricular integration in instruction teaches students to draw connections across disciplines, which builds a broader understanding of themes, ideas, questions, and topics. Small classes taught around the Harkness table allow teachers to combine the best of one-on-one instruction with the dynamics of group discussion. Pacific Ridge operates on a final mastery grade system, whereby grades-in-progress are reported to students at 11-week, trimester intervals and only the final, transcript grade in each course is calculated in the cumulative GPA. Our Midyear Report to colleges in late January provides grade-in-progress as an average of Trimester 1 and Interim 2.

RANK IN CLASS & GPA

Pacific Ridge School does not rank students numerically due to the small size of each graduating class and the nature of an academic culture concentrated on fostering a life-long love of learning beyond the classroom. Each Senior's weighted grade-point average is reported by College Guidance in the Secondary School Report, submitted with the official transcript. Our GPA is based on all graded courses taken at Pacific Ridge grades 9-12, and each honors, AP, and post-AP honors course with a grade of C or higher is weighted one point.

COURSE OFFERINGS

Honors and AP coursework is available to students who have completed the appropriate prerequisites and have the recommendation of the faculty. Seniors enrolled in more than our **cap of 3 AP courses** have petitioned for and been granted an exception.

ENGLISH

English 9
 English 10
 American Literature
 Honors American Literature
 African American Literature
 Genre Studies
 Rhetoric
 Women in Literature
 World Literature
 AP English Language & Composition
 AP English Literature & Composition

SOCIAL SCIENCE & HISTORY

Ancient World History
 Modern World History
 US History
 AP US History
 Latin American History
 Ethnic Studies
 Middle East History & Diplomacy
 US Government & Politics
 Theory of Knowledge
 Theories of Social Change
(not offered in 2022-23)

GENERAL ELECTIVES

AP Psychology
 Economics
 Film Studies
 Journalism & Media Studies
 Programming 1, 2
 Robotics

MATH

Introduction to Algebra
 Algebra 1, 1B
 Algebra 1 Advanced
 Geometry
 Honors Geometry
 Algebra 2/Trig
 Honors Algebra 2/Trig
 Data Science
 Precalculus
 Honors Precalculus
 Statistics
 Honors Statistics
 Essentials of Calculus
 AP Calculus AB
 AP Calculus BC
 Differential Equations
(post-AP honors)
 Multi-Variable Calculus
(post-AP honors)

ARTS

Introduction to Visual Arts **
 AP Art History
 2D, 3D Design
 Graphic Design ** 1, 2
 Advanced Topics in Design
 AP 2D Art: Graphic Design
 Digital Photography
 Advanced Digital Photography
 AP 2D Art & Design: Photography
 Digital Filmmaking 1, 2
 Yearbook
 Digital Music Production
 AP Music Theory

** indicates additional honors section offered

SCIENCE

Science 9 *
 Science 10 *
 AP Biology
 AP Chemistry
 Engineering Design
 Honors Physics
 AP Physics C
 Anatomy & Physiology
 Honors Environmental Science
 AP Environmental Science
 Marine Biology
 Conceptual Physics
(8th grade Science)
** Replaced Bio/Chem 1+2 with a phenomena-based inquiry and project-oriented curriculum that weaves together life, physical, earth, space, and computer science, rooted in design and engineering practices.*

Jazz Rock Ensemble **
 Classical Music Ensemble **
 Vocal Ensemble **
 Theater Arts **
 Advanced Theater Arts:
 Acting & Directing
 Dance * 1, 2, 3, 4

World Languages

Chinese 1, 2, 3, 4
 Chinese 2 Advanced
 Honors Chinese 3, 4, 5
 AP Chinese Language & Culture
 French 1, 1B, 2, 3, 4
 French 2 Advanced
 Honors French 3, 4
 AP French Language & Culture
 Spanish 1, 1B, 2, 3, 4
 Honors Spanish 3, 4, 5
 AP Spanish Language & Culture

SHTeam

Architectural Foundations
 Entrepreneurship
 & Venture Capital
 Forensics
 Hands-on Aerodynamics
 Industrial Design
 Modern Markets
 Nanotechnology
 The Politics of Business
 Product Design
 Social Entrepreneurship
 Sociology of Food
 Surf & Sk8: Design/Build

GRADE-LEVEL EXPERIENCES

9 Grade 9 students choose a topic of importance to them, research, craft and deliver an **oration** to their entire grade. Finalists are chosen by each advisory to present to the Upper School, faculty, administration, and the Board of Trustees. The Class of 2024 presented on topics ranging from the psychological impact of lockdown drills to the challenges of remote learning. Current Seniors also created a MUSEum their 9th grade year to showcase the breadth of interests that drive them.

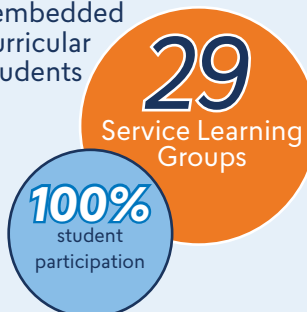
10 Grade 10 students connect their understanding with memorials by researching a historically significant topic and exploring how the dominant narrative may have relegated important, lesser-known persons or events to footnotes. The **Memorial Project** culminates in a public art gallery created to stoke curiosity about the intersectionality of art, history, and social movements as expressed in displays introducing everything from seed theories to unsung innovators.

11 **Junior Project** encourages 11th graders to look to the future. Each junior is encouraged to identify an interview subject based on a field of interest, set a career-focused interview, ask questions to learn more about their subject's path and insights, then transcribe the experience into a presentation to educate the school community. Current seniors interviewed activists, local leaders in biotech, music & theater production, politics, and environmental conservation.

12 Seniors develop a solo or team project to reflect their emerging identities and share these with the community in presentations, installations, or performances. **Signatures** are designed to reflect and celebrate the various arcs of their development supported by the Pacific Ridge experience and include everything from garden design and spirit events to programs supporting students' health and well-being.

SERVICE LEARNING

68% of seniors collaborate in student-led service learning groups to advance solutions promoting equity, peace and social justice, leading change in health and education, science, innovation, and the environment. Our commitment to service learning is embedded in the 9th grade co-curricular and not required of students beyond 10th grade.



GLOBAL ENGAGEMENT

Global issues are woven into the curriculum with 2 weeks each spring devoted to field courses connecting curricula, service, and curiosity about key issues in travels with classmates and faculty.

GLOBAL TRAVEL PROGRAM

COUNTRIES VISITED **65** | **26** US CITIES VISITED

90%
of Students Participate in
Yearly Global Travel Program
(on average)



428 GRADUATES FROM **CLASSES 2020 - 2023**

145 COLLEGES & UNIVERSITIES | **33** STATES **6** COUNTRIES

CALIFORNIA

Art Center College of Design
 Cal Poly San Luis Obispo *
 CSU Long Beach *
 Chapman University *
 Claremont McKenna College
 Harvey Mudd College
 Loyola Marymount University *
 MiraCosta College *
 Occidental College
 Palomar College *
 Pepperdine University *
 Pitzer College
 Pomona College *
 Saint Mary's College of California
 San Diego State University *
 Santa Clara University *
 Santa Monica College *
 Scripps College *
 Stanford University *
 UC Berkeley *
 UC Davis *
 UC Irvine *
 UC Los Angeles *
 UC San Diego *
 UC Santa Barbara *
 UC Santa Cruz *
 University of Redlands
 University of San Diego *
 University of San Francisco *
 University of Southern California *
 Westmont College

MID-ATLANTIC

American University *
 Bryn Mawr College
 Carnegie Mellon University *
 The College of William and Mary
 Drexel University
 George Washington University *
 Georgetown University *
 Johns Hopkins University *
 Penn State University
 University of Pennsylvania
 University of Pittsburgh *
 Villanova University
 Washington and Lee University

MID-WEST

Bradley University
 Carleton College
 Indiana University
 Lake Forest College
 Loyola University Chicago
 Marquette University

Miami University of Ohio *
 Northwestern University *
 The Ohio State University *
 Purdue University *
 St. Olaf College *
 University of Chicago
 University of Illinois at Urbana-Champaign *
 University of Michigan *
 University of Notre Dame
 Washington University in St. Louis *

NORTHEAST

Babson College
 Bard College
 Barnard College
 Bentley University *
 Berklee College of Music *
 Boston College *
 Boston University *
 Brown University *
 Colgate University
 College of the Holy Cross
 Columbia University *
 Cooper Union for the Advancement of
 Science and Art
 Emerson College
 Fordham University *
 Harvard University *
 Ithaca College
 Mannes School of Music
 Massachusetts College of Art and Design
 The New School *
 New York University *
 Northeastern University *
 Pace University
 Parsons School of Design *
 Princeton University
 Sarah Lawrence College
 Skidmore College
 Smith College
 Southern Connecticut State University
 Springfield College
 St. John's University
 Syracuse University *
 Tufts University *
 University of Massachusetts *
 University of Rhode Island
 Utica University
 Vassar College
 Wesleyan University
 Worcester Polytechnic Institute *
 Yale University

PACIFIC NORTHWEST

Gonzaga University
 Lewis & Clark College
 Reed College
 Seattle University
 University of Oregon *
 University of Washington *

SOUTH/SOUTHEAST

Auburn University *
 Belmont University
 Clemson University
 College of Charleston
 Duke University
 Elon University
 Emory University
 Georgia Institute of Technology
 Louisiana State University
 Rice University
 Savannah College of Art and Design
 Southern Methodist University *
 Texas Christian University *
 Tulane University of Louisiana *
 The University of Alabama
 University of Miami *
 Vanderbilt University *
 Wake Forest University

WEST / MOUNTAIN

Arizona Christian University
 Arizona State University *
 Brigham Young University, Idaho
 Brigham Young University, Provo
 Chaminade University of Honolulu
 Colorado College
 Colorado School of Mines *
 Montana State University
 Regis University
 University of Arizona *
 University of Colorado, Boulder *
 University of Denver *
 University of Hawaii at Manoa
 University of Utah *

INTERNATIONAL

NYU Shanghai
 Sciences Po/Columbia University
 Trinity College/Columbia University
 University of British Columbia *
 The University of Edinburgh
 University of Toronto
 University of Westminster

* indicates more than one matriculation at that institution