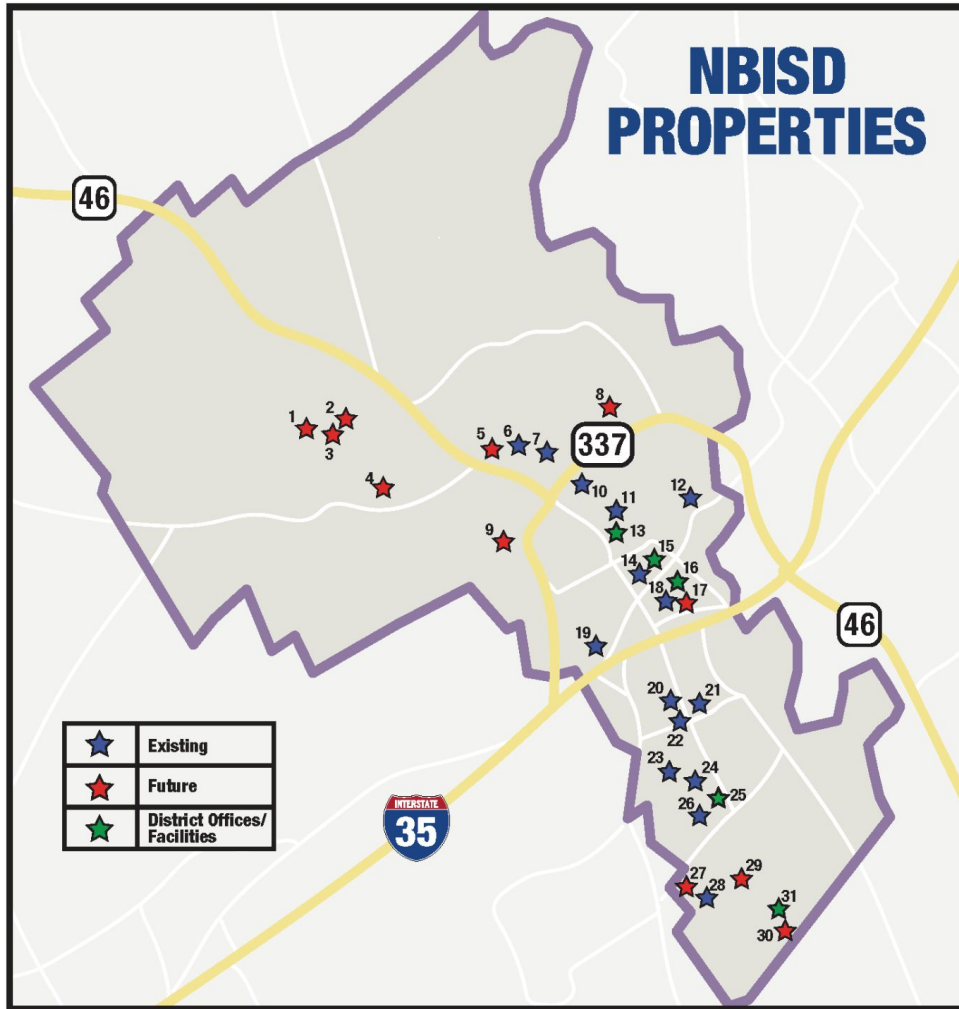


NBISD Facilities Overview

2024 Bond Planning Committee Meeting

October 4, 2023



1. Future School/Facility

2. Future High School

3. Future Middle School

4. Future School/Facility

5. Future Facility

6. Oak Run Middle School

7. Veramendi Elementary

8. Future Elementary School (Bond Approved)

9. Future School/Facility

10. New Braunfels High School

11. Seele Elementary

12. Lamar Elementary

13. Administration Center

14. Gateway/DAEP

15. Education Center

16. Support Services

17. Future School/Facility

18. Carl Schurz Elementary

19. Lone Star Early Childhood Center

20. Walnut Springs Elementary

21. Memorial Elementary

22. County Line Elementary

23. Voss Farms Elementary

24. New Braunfels Middle School

25. Transportation

26. Klein Road Elementary

27. Future School/Facility

28. NBHS Ninth Grade Center (Future LCHS)

29. Legend Point Elementary

30. Future School/Facility

31. Ag Facility

NB ISD Boundary 200.3 Acres

Proposed Middle & High School Site

Proposed Elementary Site

Brandt Ranch Boundary 223.2 Acres

W State Highway 4

Street A

Midwest Density Residential 23.1 acres

Brandt Ranch Midwest Density Residential 190.7 acres

Midwest Density Residential 1.8 acres

Greenbelt Conservation Park Tracts 6.3 Acres

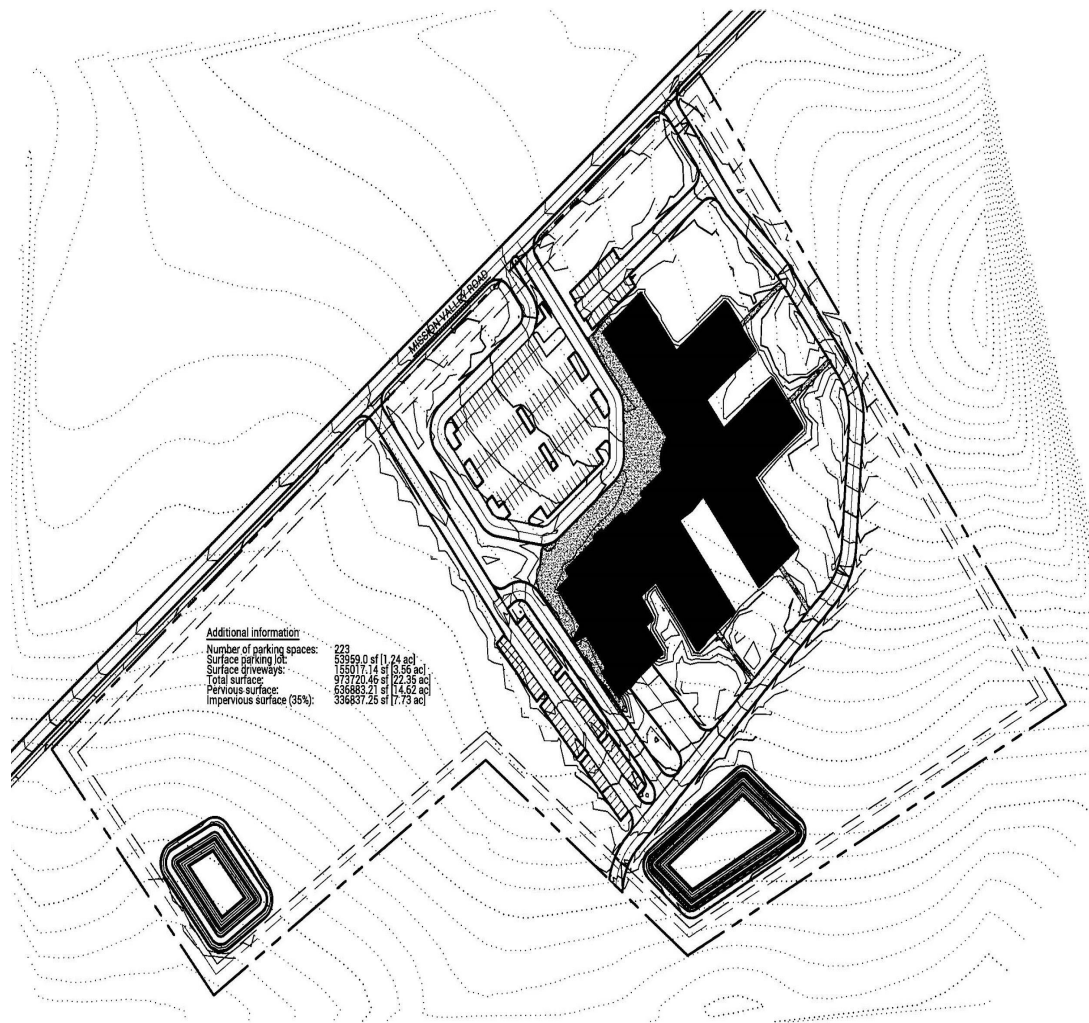
Greenbelt Conservation Park Tracts 8.1 Acres

NBISD Property (# 1,2 & 3) - Brandt Ranch

Acres: 200 acres total

Anticipated Long Term Use:
Possible High School, Middle School, and Elementary School

Note: With the close proximity to future roadway (Parkway 200' ROW, proposed outer loop) on the north side of the property allows for additional access for these facilities.



NBISD Property (#4) - Mission Valley Road

Acres: 22.6 acres total

Anticipated Long Term Use:
Possible Elementary School

Note: Room for additional facility on this site (possibly AG barn)

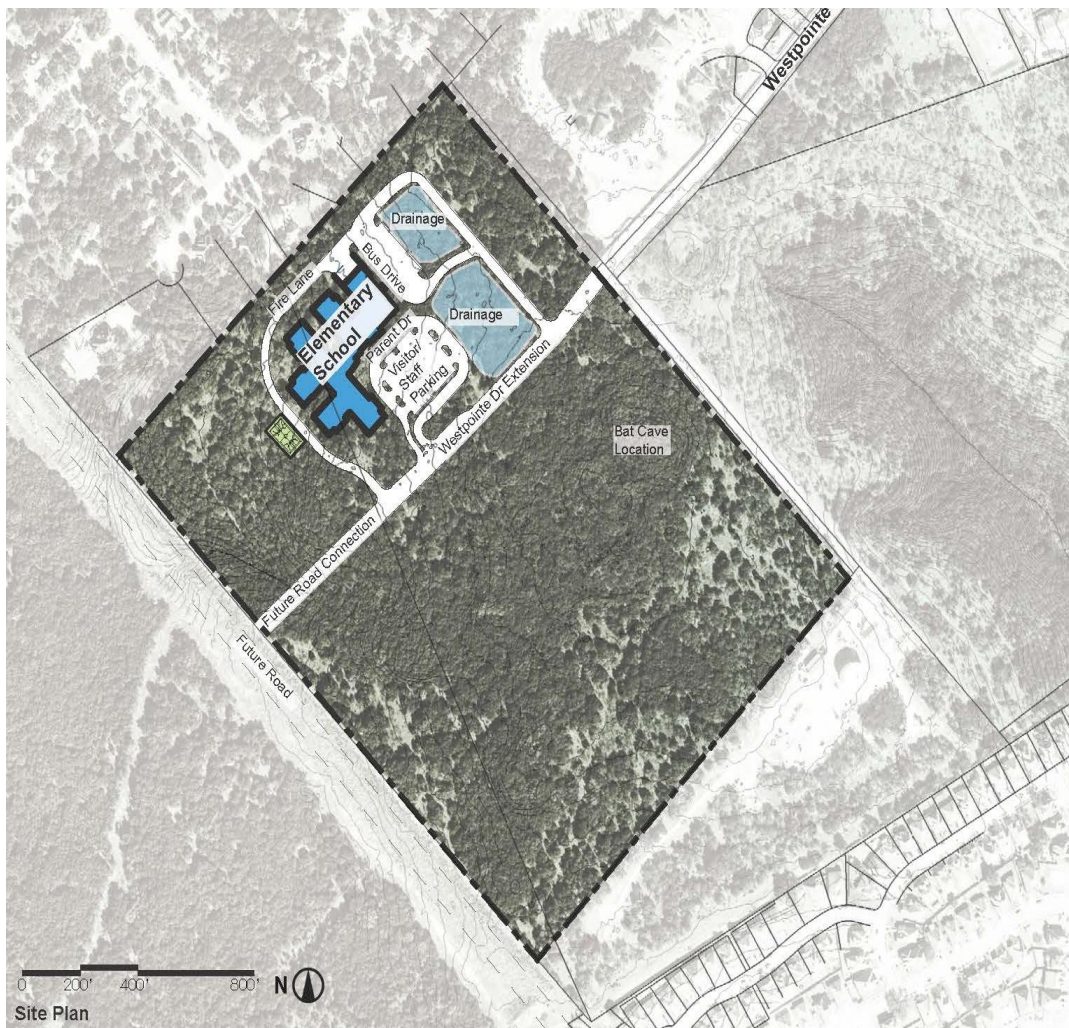
NBISD Property (#5) -Alyssa Way) Future Facility Adjacent to ORMS

Acres: 4.5+ acres total

Possible Usage:

- ORMS expansion
- Support Services
- Transportation





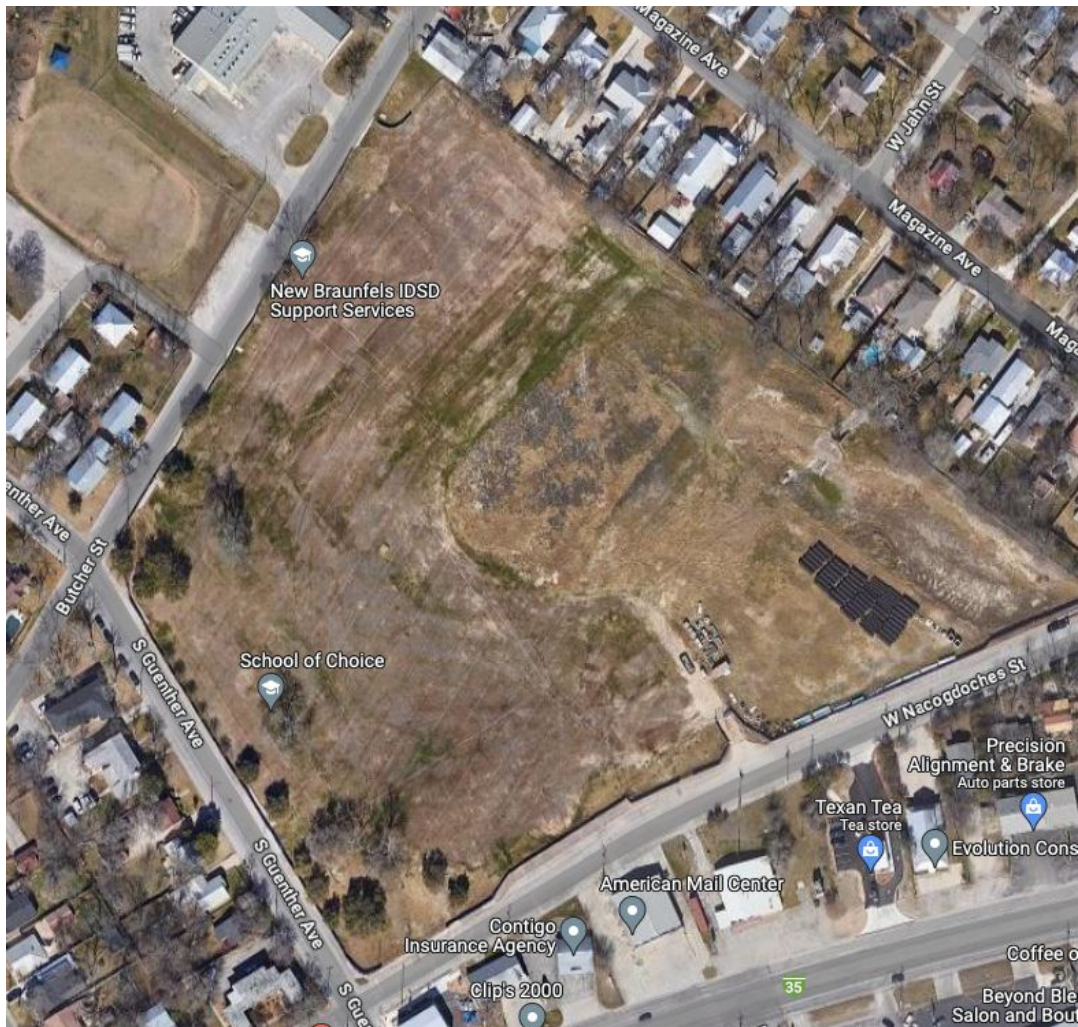
NBISD Property (#9) - Westpointe Drive

Acres: 30.9 acres total (without the extension of Westpointe Dr.)

Anticipated Long Term Use:

- Elementary School
- Satellite Transportation Center

Note: With the close proximity to future roadway (Minor Collector 60' ROW, which will connect FM 1863 to Landa Street) on the west side of the property allows for additional access for both the elementary campus and the transportation center.



NBISD Property (#17) - Guenther & Nacogdoches Future Facility

Acres: 14 acres total

Anticipated Long Term Use:

- Possible School (if needed)



NBISD Property (#25 & #26) - Klein Road & Klein Way Future Facility by Klein Road Elementary

Acres: 16-32+ acres total

NOTE: NBU easement on southeast corner of the property.

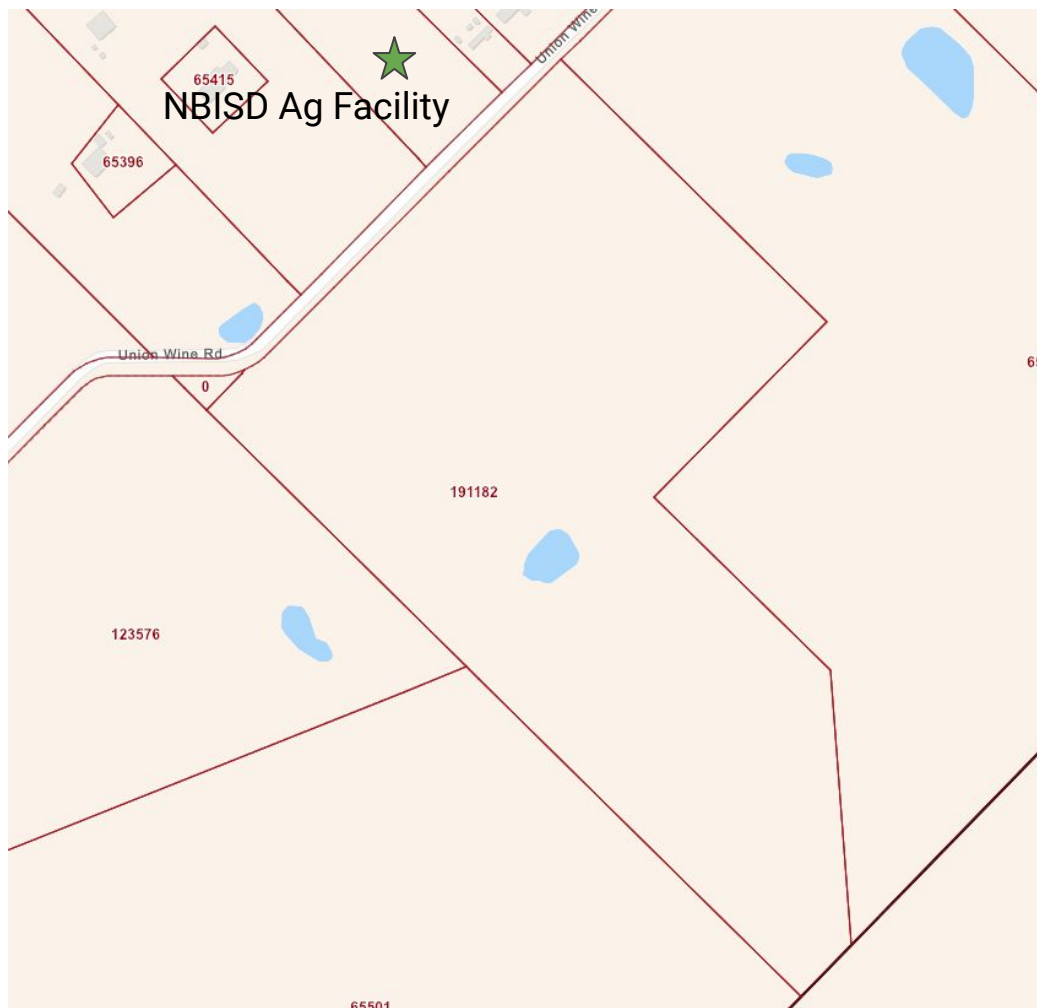


**NBISD Property (#27) - Klein
Road
Future Facility Adjacent to
Future Long Creek High
School**

Acres: Less than 20 acres total

Possible usage:

- **Ninth Grade Center**
- **Elementary School**
- **Support Services**

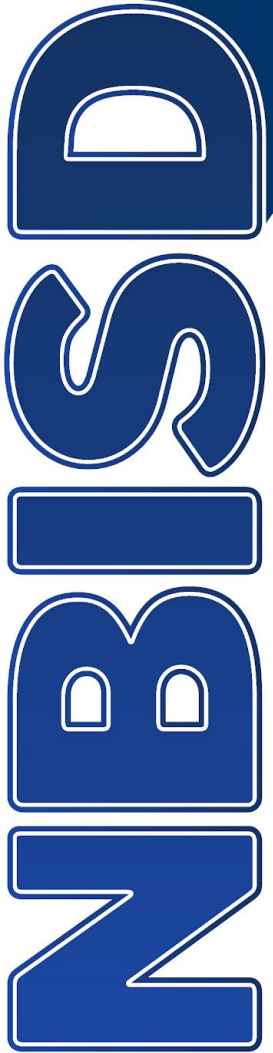


NBISD Property (#30) - Union Wine Future School Facility(ies)

Acres: 50 acres total

Possible usage:

- **Middle School and/or**
- **Elementary School**



Current Schools



NBISD High School (#10)

Total Square Footage: 338,457 sq'

Acres: 100 total (62 useable)

Building Additions (main):

1963 (original) – 131,150 sq'

1965 (vocational) - 14,250 sq'

1969 (science) - 15,804 sq'

1986 (auditorium/kit) - 30,500 sq'

1989 (100 wing) -16,315 sq'

1996 (800 wing) -16,558 sq'

1998 (library) – 13,060 sq'

2002 (600/900, small gym, commons) – 60,000 sq'

Building Additions (other):

Unknown (field house) – 10,890 sq'

1988 (ROTC) - 4,130 sq'

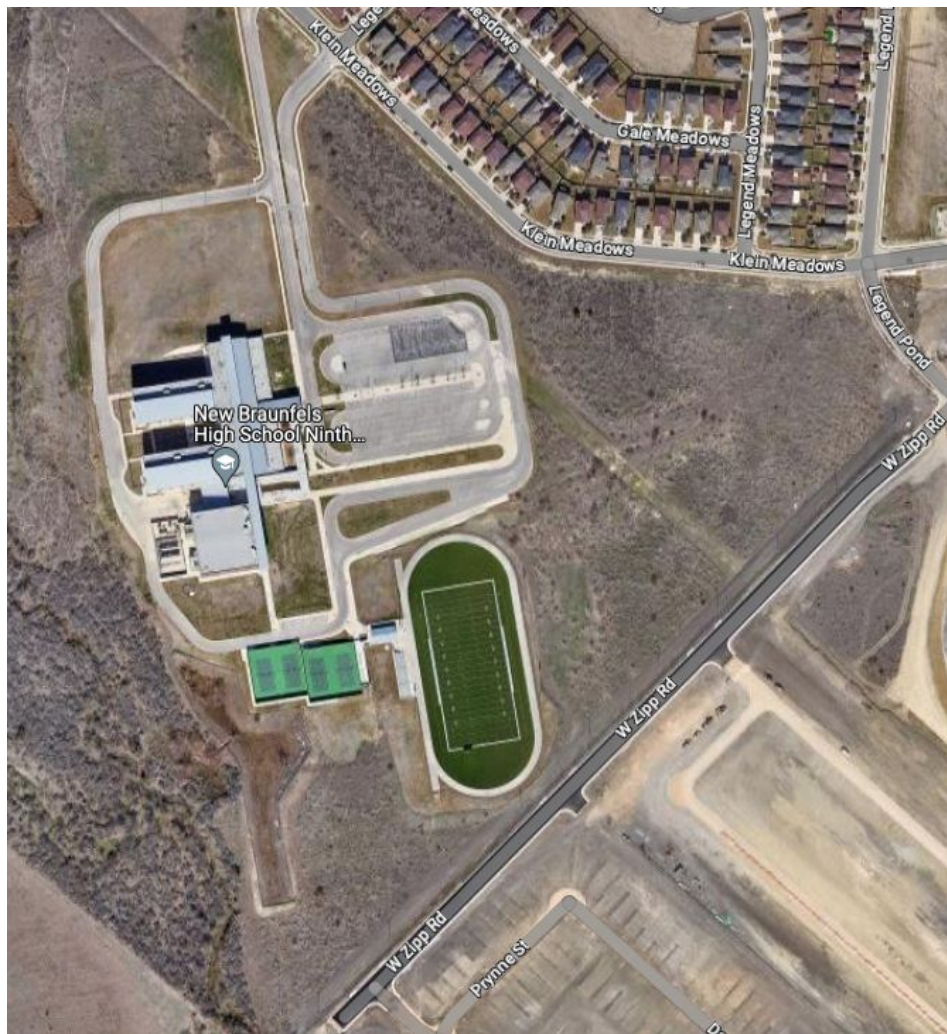
1998 (spring sports FH) - 4,585 sq'

1998 (weight room) - 3,020 sq'

2002 (FH additions) -16,675 sq'

2012 (soft/base dressing) – 1,520 sq'

2017 (stadium concessions/restrooms)



**Ninth Grade Center (#28) -
Long Creek HS
4150 Klein Meadows**

**Total Square Footage: 198,000 sq'
Acres: 107 total (77 useable)**

**Building:
2012 (original) 198,000 sq'**



**NBISD Middle School
(#24)
1806 Settlers Crossing**

**Total Square Footage:
188,500 sq'
Acres: 72 total**

**Building:
2021 (original) 188,500 sq'**



Oak Run Middle School (#6)
415 Oak Run Point

Total Square Footage: 160,957 sq'

Acres: 36 acres total

Building:

1992 (original) 71,102 sq'

2007 (classroom addition 7/8)
20,665 sq'

2009 (gym, café, library, 6th gr)
69,190 sq'



County Line Elementary (#22) **1200 W County Line Rd**

Total Square Footage:
(without portables) – 59,240 sq'
(with portables) – 62,312 sq'

Acres: 10.5 acres total

Building:
1986 (original) – 55,640 sq'
1987 (four classroom addition) – 3,600 sq'
2003 (two classroom portable) – 1,536 sq'
2005 (two classroom portable) – 1,536 sq'



Walnut Springs Elementary (#20)
1900 S Walnut Ave

Total Square Footage:

(without portables) – 56,038 sq’

(with portables) – 60,646 sq’

Acres: 15.75 acres total

Building:

1989 (original) 52,628 sq’

1996 (four classroom addition) 3,410 sq’

2005 ((2) - two classroom portables) 3,072 sq’

2006 (two classroom portable) 1,536 sq’



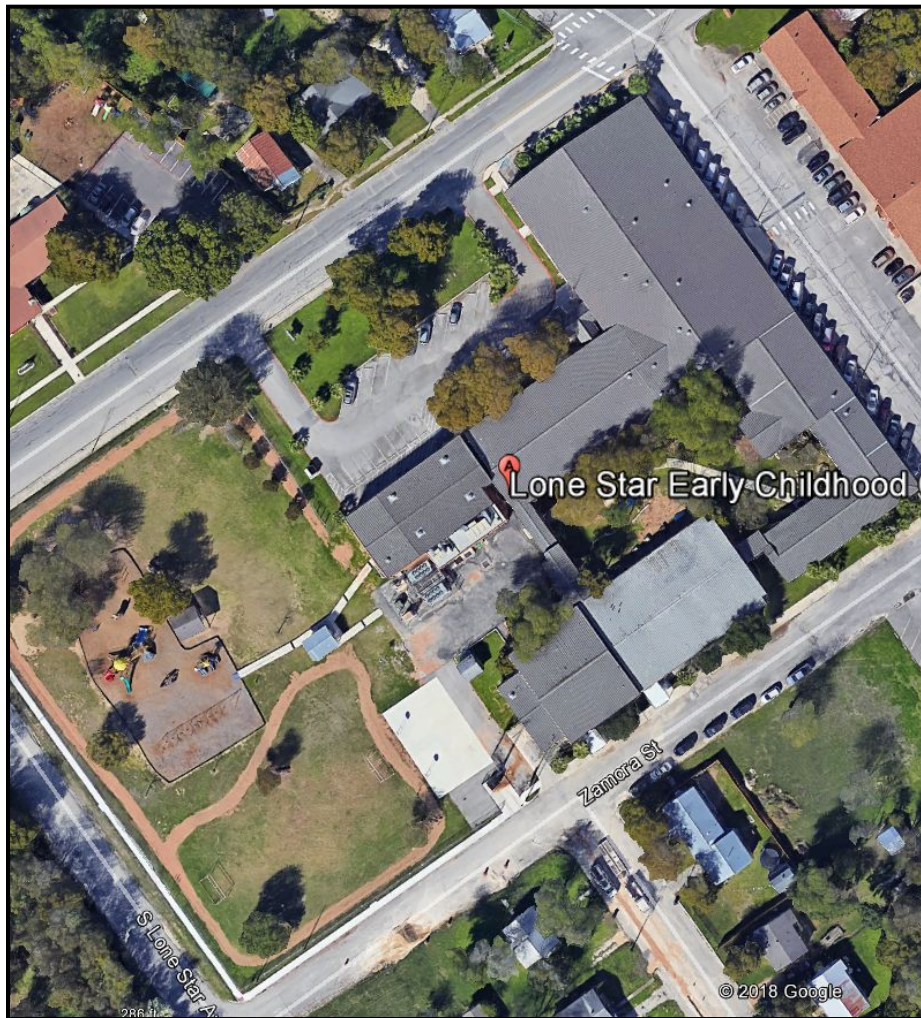
Memorial Elementary (#21)

1911 S Walnut Ave

Total Square Footage:
(without portables) – 62,419 sq'
(with portables) – 65,191 sq'

Acres: 14.25 acres total

Building:
1998 (original) 62,419 sq'
2006 (four classroom portable) 2,772 sq'



Lone Star Early Childhood Center (#19) 2343 W San Antonio St

Total Square Footage: 55,253 sq'

Acres: 5 acres total

Building:

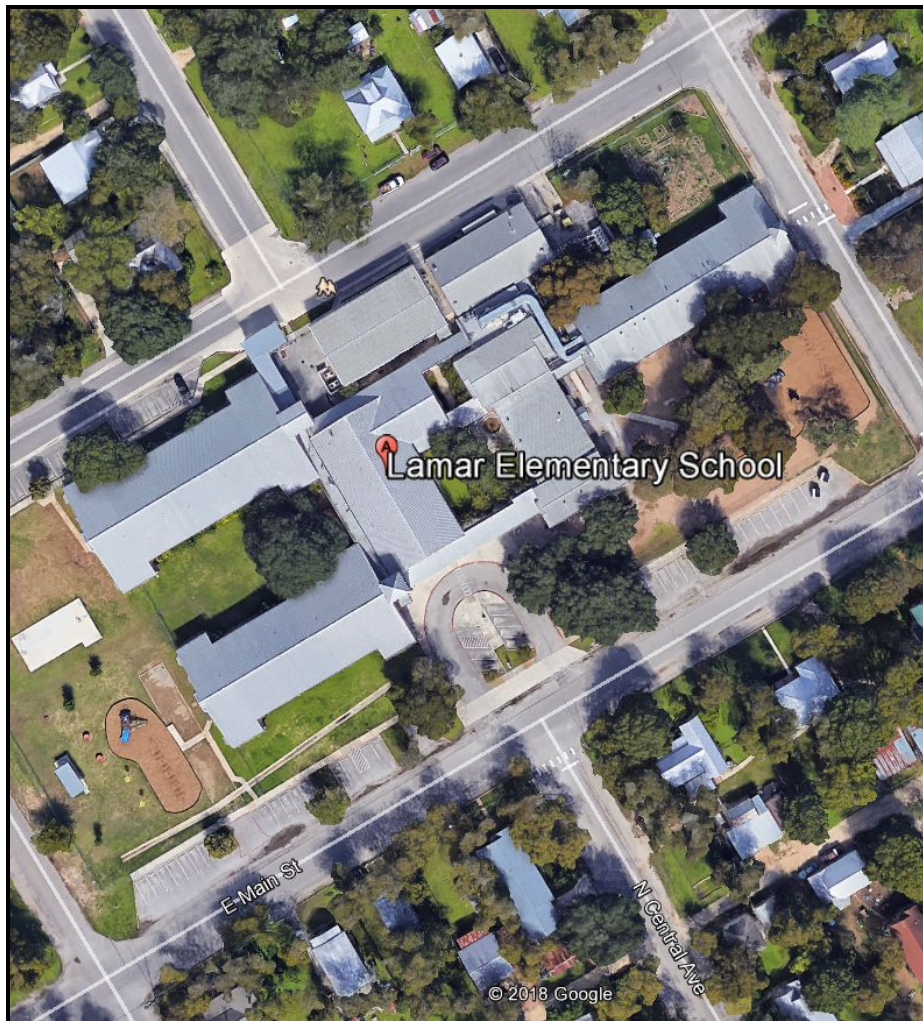
1945 (original) 22,490 sq'

1962 (classroom/café addition) 14,688 sq'

1984 (classroom addition) 8,704 sq'

1986 (gym/stage addition) 3,500 sq'

2004 (office/gym/classroom addition) 5,871 sq'



Lamar Elementary, 240 N Central Ave (#12)

Total Square Footage: 65,219 sq'

Acres: 4.75 acres total

Building:

1924 (original) – 9,311 sq'

1950 (classroom addition) - 10,235 sq'

1961 (café addition) – 3,770 sq'

1988 (gym addition) – 4,471 sq'

1990 (two classroom addition) – 2,432 sq'

2002 (office/classroom addition) – 35,000 sq'

Anticipated Long Term Use:

Second NBISD Early Childhood Center

Building Issues: Age (especially the 1924 section) and small site.



Klein Road Elementary (#26)
2620 Klein Way

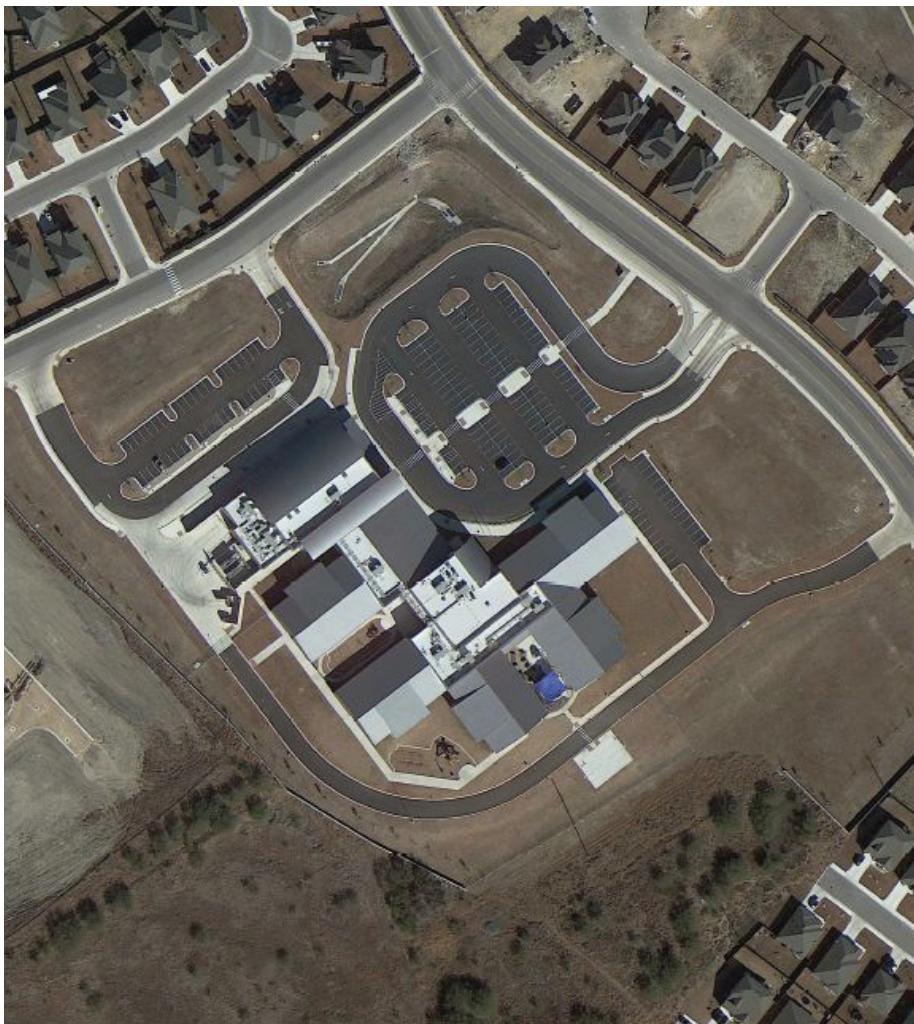
Total Square Footage: 90,000 sq'

Acres: 18.00 acres total

Building:
2009 (original) – 90,000 sq'

Note:

- Core areas (office, café, gym, library) are built to accommodate up to 900 students.
- Maximum student occupancy without classroom expansion is 750 students.



Voss Farms Elementary (#23)
2510 Pahmeyer Rd

Total Square Footage: 93,000 sq'

Acres: 16.00 acres total

Building:
2017 (original) – 93,000 sq'

Note:

- Core areas (office, café, gym, library) are built to accommodate up to 900 students.
- Maximum student occupancy without classroom expansion is 750 students.



Veramendi Elementary (#7)
2290 Oak Run Pkwy

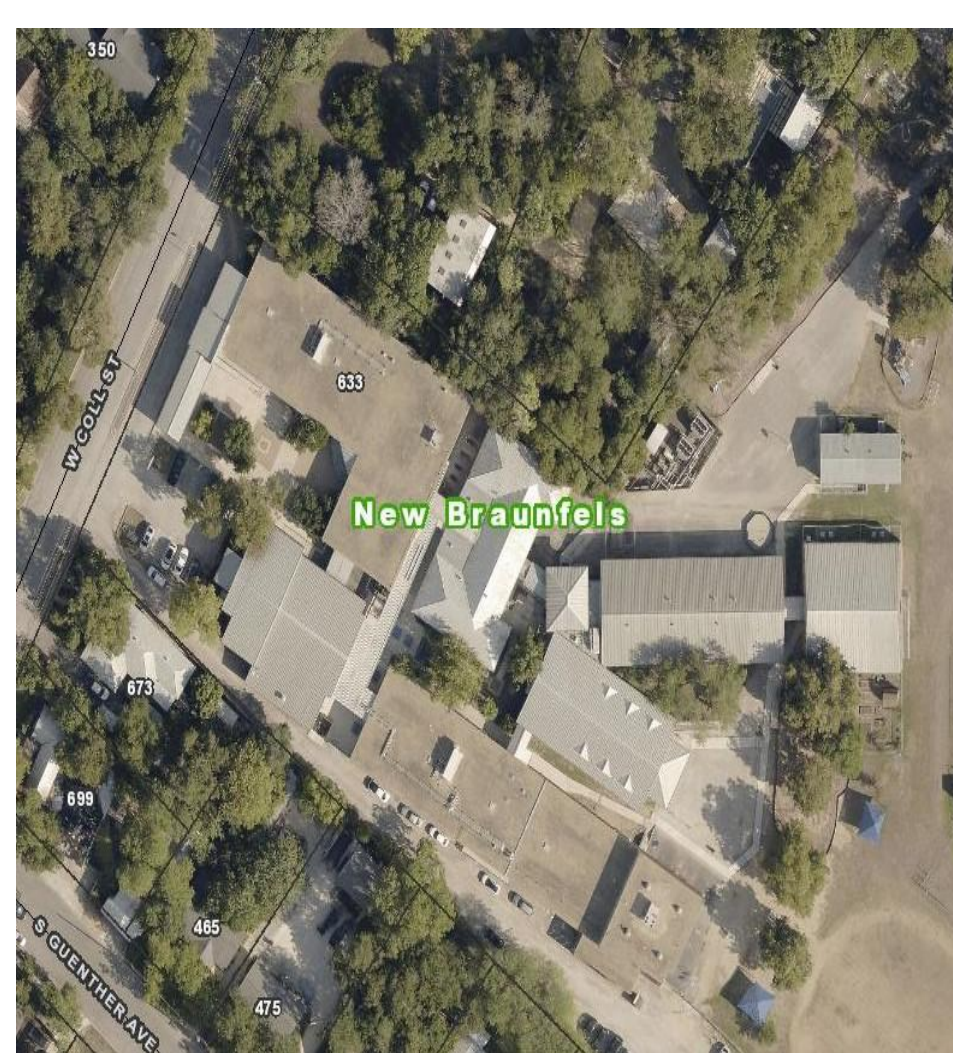
Total Square Footage: 102,000 sq'

Acres: 16.00 acres total

Building:

2017 (original) - 93,000 sq'

2020 (8 - classroom expansion) - 9,000 sq'



Carl Schurz Elementary (#18)
633 W Coll St

Total Square Footage: 59,989 sq'

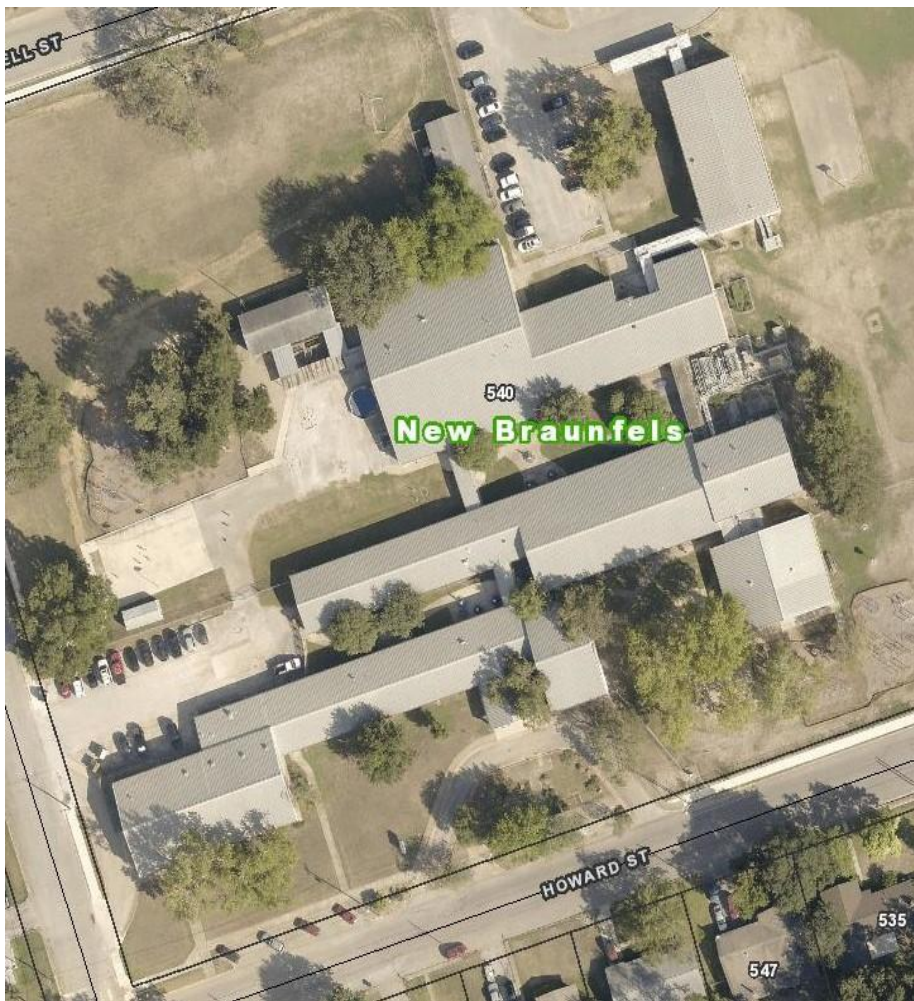
Acres: 7.5 acres total

Building:

- 1935 (original) - 6,595 sq'
- 1950 (classroom addition-G wing) - 6,500 sq'
- 1962 (café addition) - 5,100 sq'
- 1979 (B, D office, gym additions) - 27,061 sq'
- 1990 (4 classroom addition) - 5,169 sq'
- 2004 (library/stage additions) - 8,124 sq'
- 1988 (portable) - 1,440 sq'

Building Issues:

- Age (general)
- Structural issues in the 1935 section



Seele Elementary (#11), 540 Howard St
Total Square Footage: 54,300 sq'

Acres: 9 acres total

Building:

1950 (original) - 24,322 sq'

1978 (office, classroom additions) - 18,050 sq'

1989 (gym) - 5,000 sq'

1994 (4 classroom addition) - 4,048 sq'

unknown (2-portables) - 2,880 sq'

Building Issues:

- Periodic flooding
- Age (general)

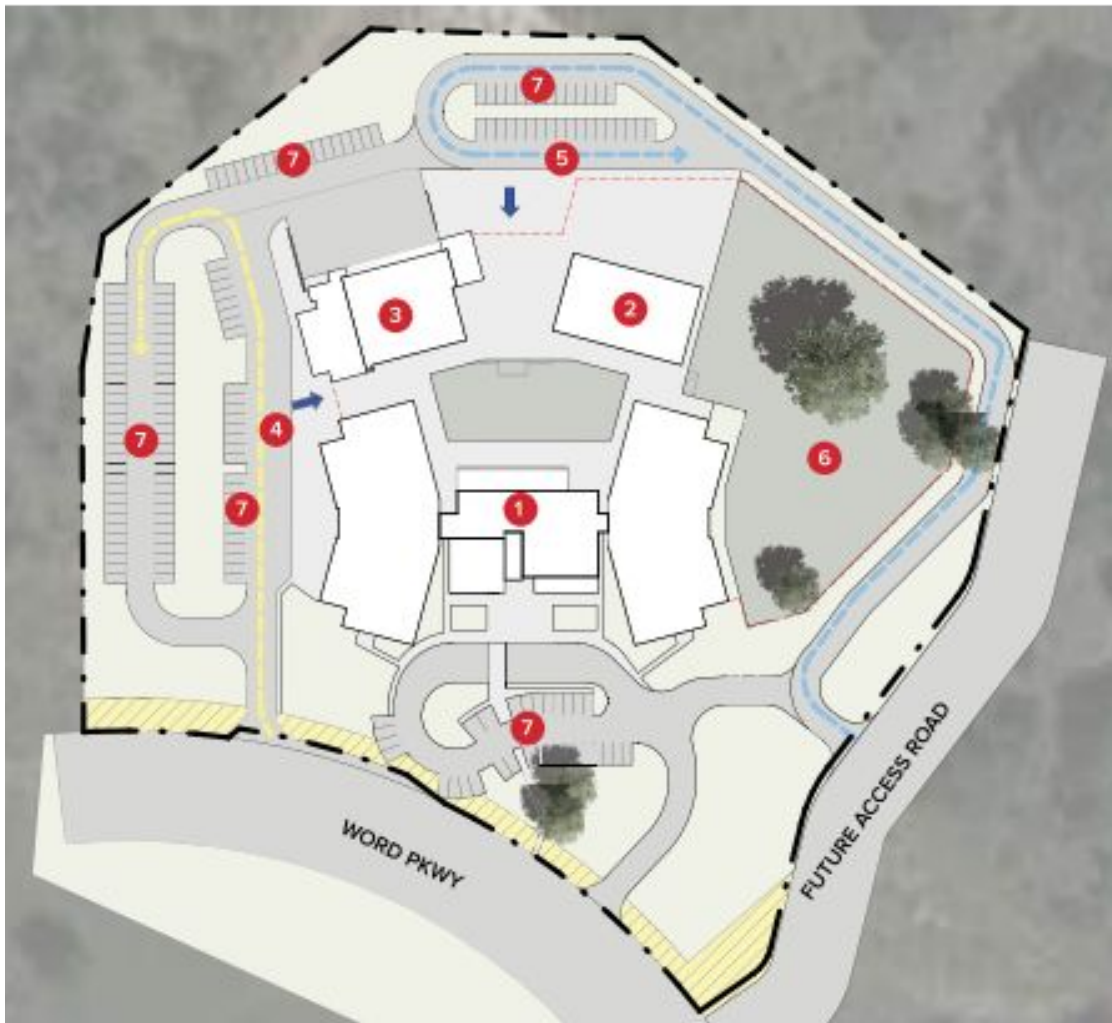


**Legend Point Elementary
School (# 17)
4365 Klein Meadows**

Acres: 12.5 acres total

**Opening: During 2024-2025 School
Year**

Guido Constr

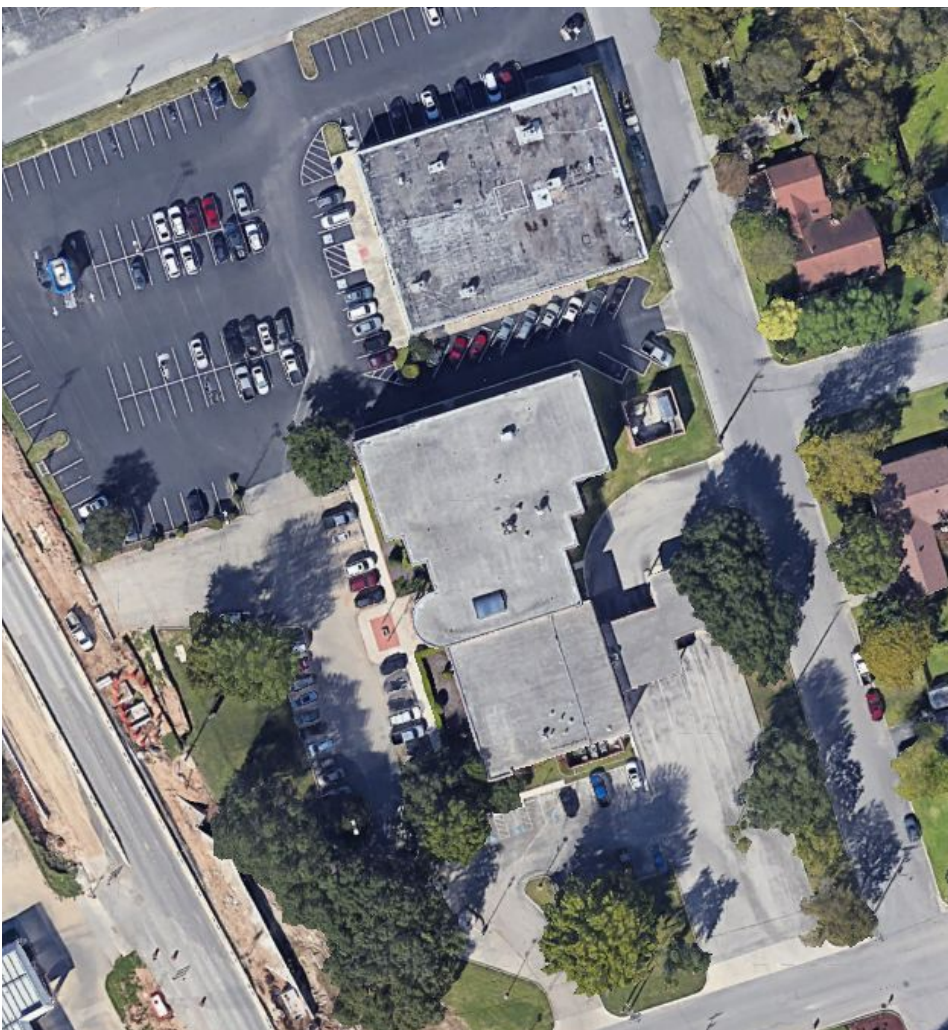


Elementary School #11 (#8)

Acres: 11.5 acres total

2021 Bond Funded:

- Second school in Veramendi development
- 900 student capacity
- Two-story design
- Opening 2025-26 school year



NBISD Administration Center (#13)
1000 N Walnut Ave

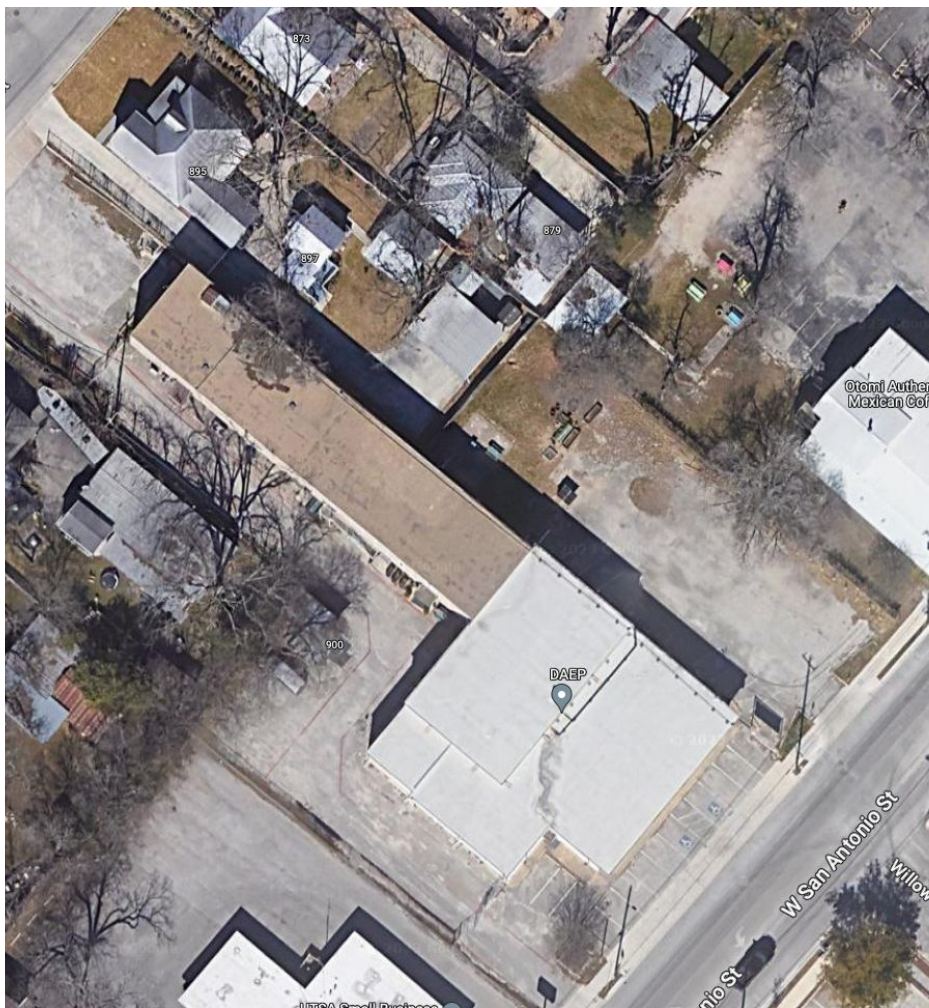
Total Square Footage: 39,084 sq'

Acres: 4 acres total

Building:

Old Wells Fargo (original) - 26,876 sq'
Old Seele Plaza (original) - 12,208 sq'
2019 (Both buildings were completely renovated into the NBISD Administration Center)

Current Use: NBISD Administration Center



NBISD Learning Center (#14)
Total Square Footage: 15,300 sq'
Acres: .5 acres total

Building:

Originally a retail building - 15,300 sq'
1994 (Acquired by NBISD)

Current Use: DAEP and Gateway programs.
(Also is the primary hub for the NBISD/NBU
fiber Wide Area Network)

Anticipated Long Term Use: Discussions
regarding demolition of the existing structure
and building a new district network operations
center (MDF with staff offices).

Building Issues: Major structural issues (tilt
wall).



Education Center (#15), 430 W Mill St
Academy Street Gym & EC Annex
Acres: 1.7 acres total

Buildings:

1913 (Education Building) - 29,579 sq'
1936 (Academy Street Gym) – 9,399 sq'
1900 (EC Annex) - 2,040 sq'

Current Uses:

Education Building: Leasing out space to a local non-profit, Staff training, meeting area, basement has network equipment.

Academy Street Gym: Hourly rental, overflow student functions (HS/MS).

EC Annex: Maria's Closet

Building Issues: Age (general), historical, parking, some structural concerns with the ED Center



NBISD Support Services (#16)
566 Butcher St.
Total Square Footage: 19,500 sq'

Acres: 2.5 acres total

Building:
2001 (original) - 19,500 sq'

Current Use:
Central kitchen, warehouse, maintenance shops,
Support Services offices.

Building Issues: Maintenance/Grounds is outgrowing the facility. May need to consider future expansion. Note: Foodservice is moving to campus based full production kitchens. May need office expansion.



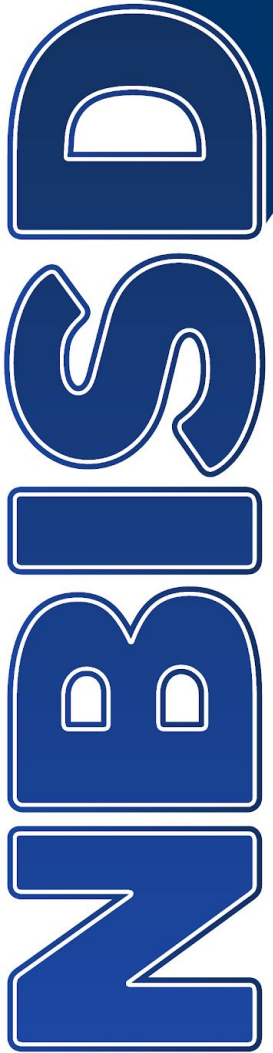
**NBISD Transportation Center
(#25)**
2621 Klein Way
Total Square Footage: 11,814 sq'

Acres: 9 acres total

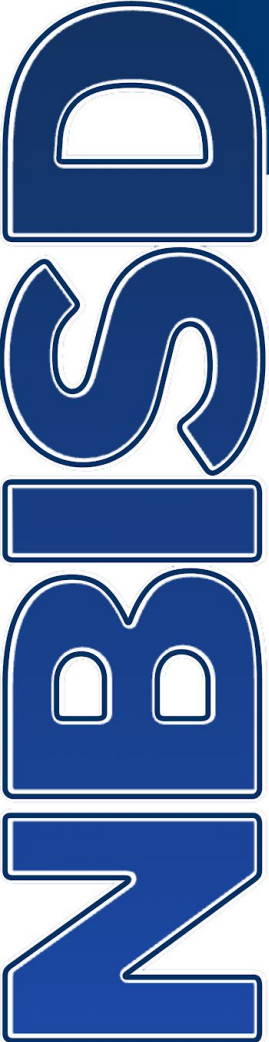
Buildings:

Wash Building - 1,000 sq'
Transportation Building -10,814 sq'

Current Use: NBISD
Transportation Center



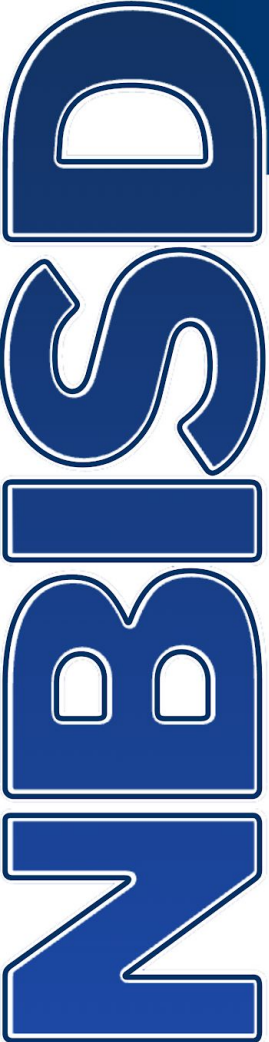
QUESTIONS



Breakout Sessions

Group 1 in Cafeteria

Group 2 in Gymnasium

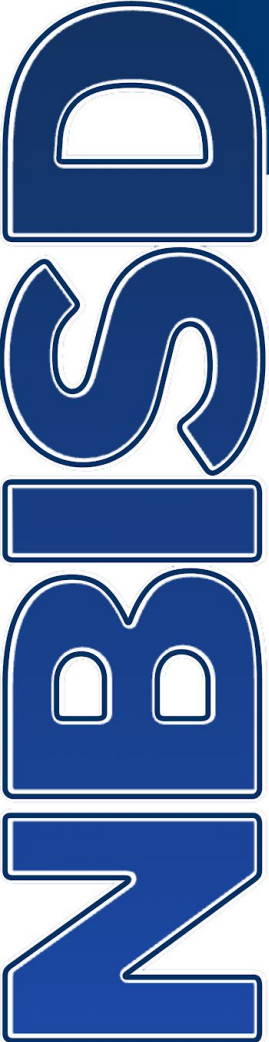


#StrongerTogether

Election for Chair and Co-Chair



SCAN ME



UPCOMING MEETINGS & TOPICS

October 18

Location: NBMS

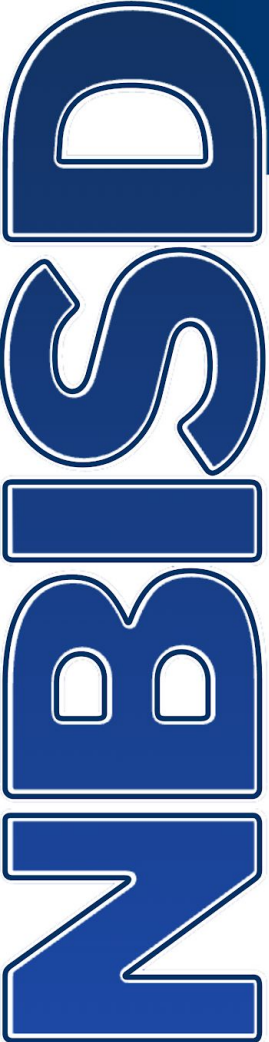
Topics: Finance, Curriculum,
CTE, Fine Arts, and Middle
School Discussion

November 1

Location: Ninth Grade Center
Technology and Buses, Athletics,
Facilities and Maintenance Projects

November 15

Location: NBHS
NBHS Discussion and Review of
Possible Bond Projects with costs

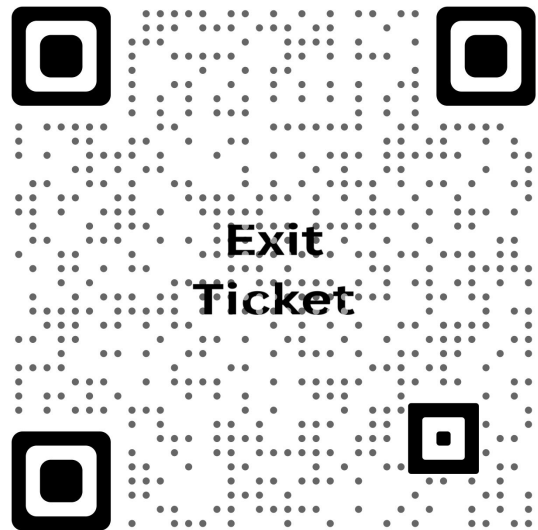


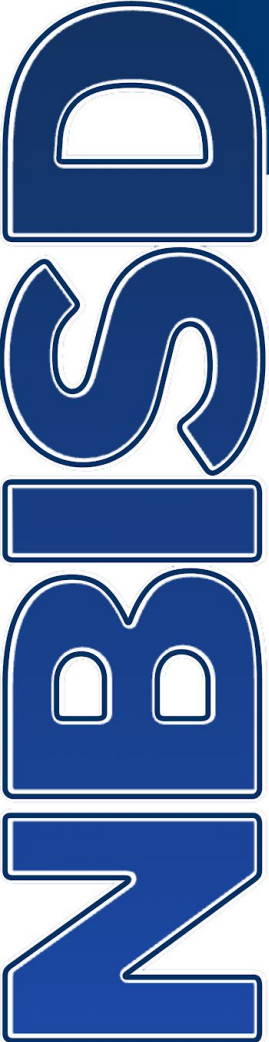
Please scan before you leave!

Please scan the QR code to answer the following before you leave tonight.

PLUS+ What do you feel worked well and we should continue as part of this process?

DELTA- What do you recommend we change to improve the process?





NEXT MEETINGS

New Braunfels Middle School

6:00 p.m.

Wednesday, October 18

THANK YOU!