



# Long Range Facility Plan

2023 – 2033

# Index

Educational Arrangements	4
Grade Level Splits	4
Optimal Campus / Class Size	4
Staffing Patterns	5
Long Range Planning Committee Process	6
Executive Summary 2021 LRP	7
Demographic Projections	7
Committee’s Final Recommendation	8
Executive Summary 2019 LRP	11
Demographic Projections	12
Committee’s Final Recommendation	13
Order of Election	16
Election Results	17
Executive Summary 2017 LRP	18
Demographic Projections	19
Committee’s Final Recommendation	21
Order of Election	22
Election Results	24
Executive Summary 2013 LRP	25
Demographic Projections	27
Committee’s Final Recommendation	29
Order of Election	32
Election Results	36
Executive Summary 2007 LRP	37
Demographic Projections	39
Committee’s Final Recommendation	41
Order of Election	43
Election Results	46
Executive Summary 2001 LRP	47
Demographic Projections	48
Committee’s Final Recommendation	50
Order of Election	51
Election Results	54

Facilities as of January 2021	55
Demographic Studies to Actual Comparison	57
Campus Alignments after Completion of 2017 Bond	58
Campus Alignments after Completion of 2019 Bond	59
Future Construction through 2026	60

# Educational Arrangements

## Grade Level Splits

### Prior to Bond 2019

	<b>Grade Levels Served</b>	<b>Number of Campuses</b>
Elementary	PK – 5	7
Middle School	6 – 8	2
High School	9 – 12	1

### After Bond 2019 (To Be Complete 2024)

	<b>Grade Levels Served</b>	<b>Number of Campuses</b>
Early Childhood	PK	1
Elementary	K – 5	8
Middle School	6 – 8	3
High School	9 – 10	1
Senior High School	11 – 12	1

## Optimum and Maximum Campus Enrollment

	<b>Optimum</b>	<b>Maximum</b>
Elementary	600	800
Middle School	600	1000
High School	1,800	3,500

## Staffing Pattern Guides

	<b>Elementary</b>	<b>Middle School</b>	<b>High School</b>	<b>Athletics</b>
Principal	1	1	1	1
Asst. Principal	1	1 to 500	1 to 450	1 over 1,200
Counselors	1	1 to 500	1 to 450	N/A
Security	1	1	1 to 1,250	Per Event
Testing	1	1	1	N/A
Nurse	1	1	1 to 1,000	2 (Trainer)
Librarian	1	1	1	N/A
Teachers	1 to 15	1 to 16	1 to 17	N/A
Clerical	1 to 250	1 to 250	1 to 250	1
Custodial	1 to 27,000 sq ft	1 to 25,000 sq ft	1 to 22,000 sq ft	2
Cafeteria	1 to 100	1 to 100	1 to 100	N/A

# Long Range Planning Committee Process

**Advisors:** Selection of Architects, Construction Manager, Demographer, Financial Advisors, and Facilitator. The team for 2022-2023 Committee is:

- Architects Claycomb Associates, Architects
- Construction Manager Pogue Construction
- Demographer Zonda Demographics
- Financial Advisor Hilltop Securities
- Facilitator Texas Association of School Boards

**Committee Composition:** Long Range Planning Committees consist of 40 – 50 community members. Members are recommended by the Board of Trustees and represented all geographical, ethnic, and socio-economic segments of the community.

**Agenda** **Facility Study** – Architects conduct and present a review of all current facilities to determine capacities and best use.

**Demographic Study** – A 10 year Enrollment Projection is presented.

**Needs Assessment** – Utilizing the facility study, demographic study, faculty/staff request, and architect input the committee prepares an exhaustive list of all current and future facility wants and needs as enrollment increases. Each Committee Member rates each item on a 1 – 5 priority scale. Scores are averaged to create a priority list for the committee. After items are rated a first round of project cuts is determined. Remaining items are then placed on a needs timeline according to the Demographic projections.

**Cost Projections** – Architects and Construction Manager estimates construction cost based on recent projects. The cost of each item is then inflated to the projected future construction date.

**Financial Implications** – Financial Advisors create a Tax Rate Impact Analysis utilizing tax base projections, average daily attendance projections, and potential state funding programs (IFA, EDA, and TRE).

**Campus Attendance Zones** – Demographer assist the committee in creating Elementary zones with feeder patterns to Middle and High Schools.

**Naming of Facilities** – After gathering community input the committee will recommend names of current and future facilities.

**Recommendation to Board of Trustees** – Considering, both needs and cost, the committee will reach consensus for which items should be included and a recommended bond amount.

# Executive Summary 2021 Long Range Planning Committee

A Long-Range Planning Committee met during the 2020 – 2021 school year to considered elementary / middle school attendance zones and Anthony High School and feeder campuses mascot and colors. They presented their Final Recommendations to the Board of Trustees on March 22, 2021.

## 2021 Demographic Study

GRADE LEVEL ENROLLMENT HISTORY AND PROJECTIONS

Year (Oct.)	EE	PK	K	1st	2nd	3rd	4th	5th	6th	7th	8th	9th	10th	11th	12th	Total	Total Growth	% Growth
2016/17	34	219	299	287	343	327	324	306	272	327	302	323	279	283	243	4,168		
2017/18	34	192	362	327	289	349	342	350	342	286	334	324	321	280	249	4,381	213	5.11%
2018/19	33	224	357	406	359	329	392	372	397	385	311	381	332	349	261	4,888	507	11.57%
2019/20	44	244	412	394	433	403	384	438	405	433	424	364	387	358	311	5,434	546	11.17%
2020/21	42	203	438	448	416	461	419	429	461	428	467	481	392	402	332	5,819	385	7.09%
2021/22	42	245	523	547	530	499	544	496	507	520	487	537	500	419	382	6,779	960	16.49%
2022/23	42	245	594	622	618	609	575	629	574	562	571	561	561	531	387	7,682	903	13.32%
2023/24	42	245	672	706	691	704	691	644	669	630	614	654	591	593	496	8,641	959	12.48%
2024/25	42	245	732	780	768	764	783	769	752	736	692	705	684	628	554	9,634	993	11.49%
2025/26	42	245	794	868	870	869	848	843	882	829	805	761	739	725	584	10,706	1,072	11.13%
2026/27	42	245	858	937	957	983	946	913	904	970	907	911	754	739	677	11,742	1,036	9.68%
2027/28	42	245	911	975	1,022	1,080	1,088	1,019	1,028	995	1,061	1,022	902	754	690	12,832	1,090	9.28%
2028/29	42	245	976	1,052	1,055	1,121	1,196	1,176	1,142	1,130	1,089	1,188	1,012	902	703	14,027	1,195	9.31%
2029/30	42	245	1,049	1,128	1,138	1,155	1,235	1,294	1,310	1,255	1,236	1,226	1,176	1,012	841	15,343	1,316	9.38%
2030/31	42	245	1,124	1,216	1,221	1,248	1,277	1,338	1,405	1,439	1,371	1,389	1,214	1,176	944	16,648	1,306	8.51%

**Final Report of the Long-Range Planning Committee To  
Princeton ISD Board of Trustees  
March 22, 2021**

- Preface:** Pursuant to the request from the Princeton ISD Board of Trustees, this committee met on three separate occasions with Superintendent Donald McIntyre to:
- Review and edit current Long-Range Facility Plan
  - Review demographic study
  - Recommend elementary and middle school attendance zones
  - Recommend school colors and mascot for Anthony High School and feeder middle schools.

This Final Report constitutes the consensus recommendation of the Long Range Planning Committee.

**2) Zoning Recommendations**

Elementary attendance zones to be effective starting the 2022-2023 school year, with the opening of Mayfield Elementary.

Middle School attendance zones to be effective starting the 2023-2024 school year, with the opening of Mattei Middle School.

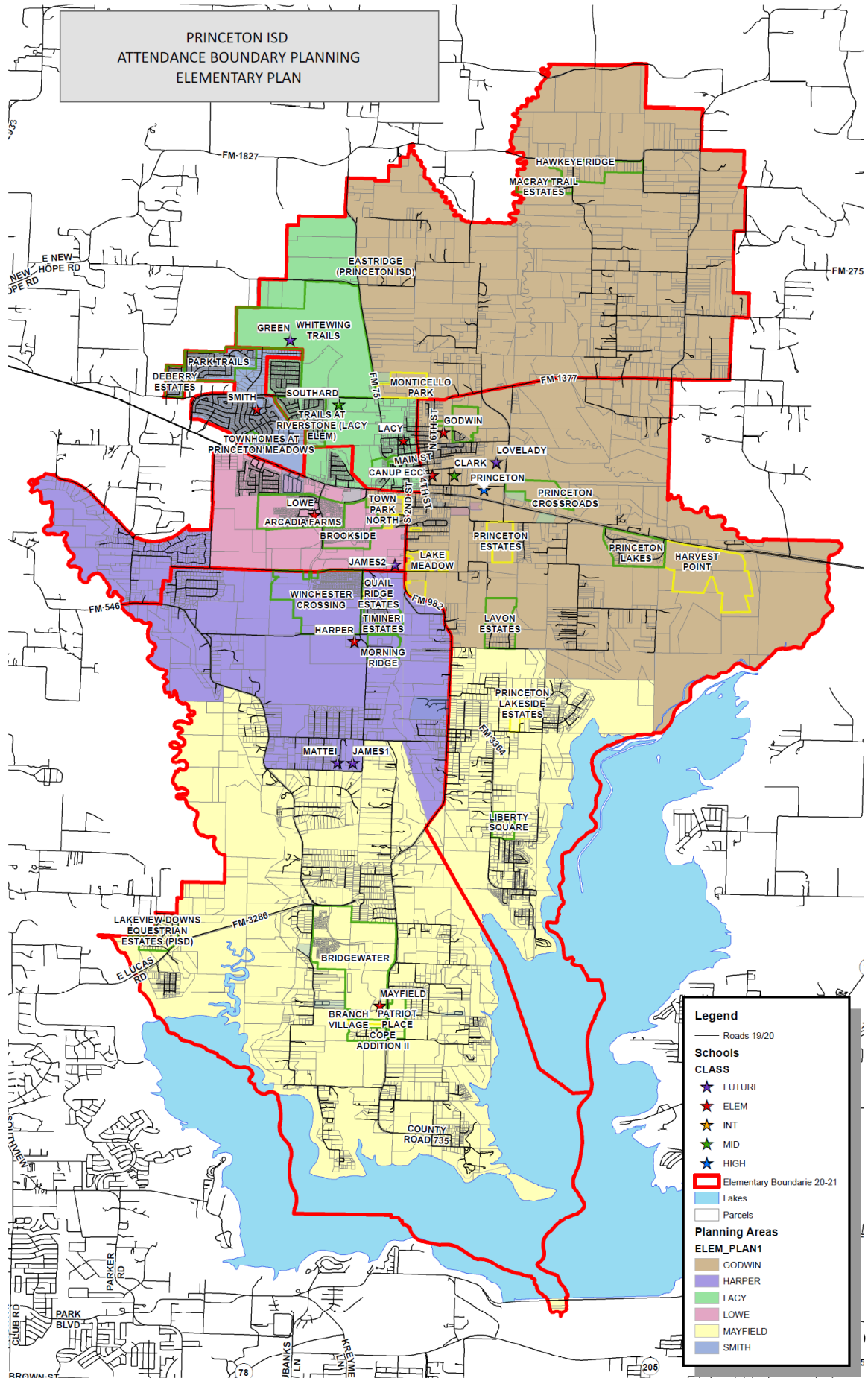
Maps attached

**3) School Colors and Mascot Recommendation**

School Colors: Maroon, Gold, and White

School Mascot: Jaguars

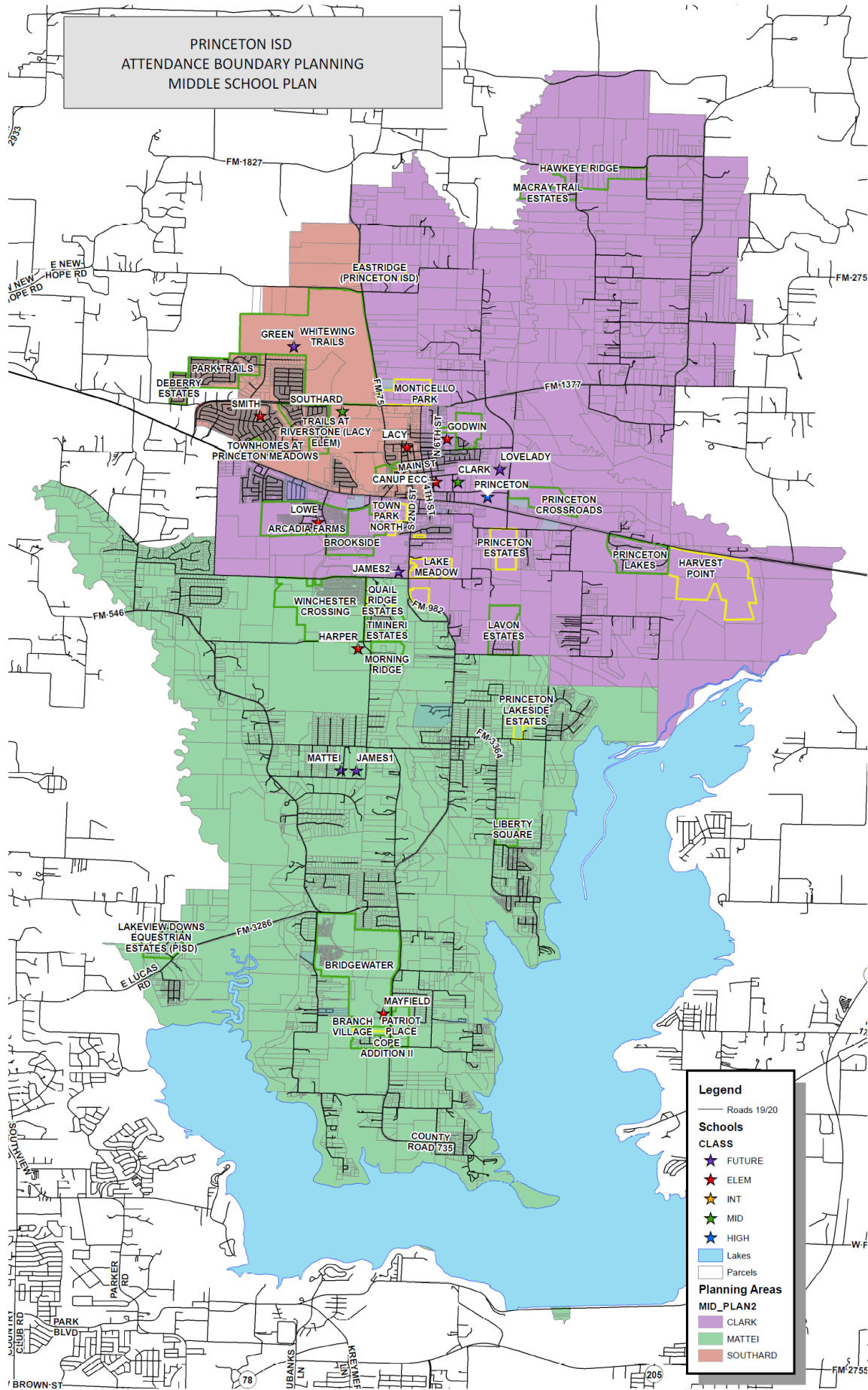
PRINCETON ISD  
ATTENDANCE BOUNDARY PLANNING  
ELEMENTARY PLAN



**Legend**

- Roads 19/20
- Schools**
- CLASS**
- ★ FUTURE
- ★ ELEM
- ★ INT
- ★ MID
- ★ HIGH
- ▭ Elementary Boundary 20-21
- ▭ Lakes
- ▭ Parcels
- Planning Areas**
- ELEM\_PLAN1**
- ▭ GODWIN
- ▭ HARPER
- ▭ LACY
- ▭ LOWE
- ▭ MAYFIELD
- ▭ SMITH

PRINCETON ISD  
ATTENDANCE BOUNDARY PLANNING  
MIDDLE SCHOOL PLAN



**Legend**

- Roads 19/20
- Schools**
- CLASS**
- ★ FUTURE
- ★ ELEM
- ★ INT
- ★ MID
- ★ HIGH
- Lakes
- Parcels
- Planning Areas**
- MID\_PLAN2
- CLARK
- MATTEI
- SOUTHARD

## **Executive Summary 2019 Long Range Planning Committee**

A Long-Range Planning Committee met during the 2018 – 2019 school year according to the process on page 6 of this study. They presented their Final Recommendations to the Board of Trustees on January 28, 2019. At the same meeting the Board called for a Bond Election in the amount of \$237.4 Million for the purpose of construction, equipment, and renovation of school buildings and for the purchase of necessary sites. The Election was held on May 4, 2019 and passed 458 to 128. Construction will begin fall 2019. In addition to Facility needs, the committee considered elementary / middle school attendance zones and campus names.

### **Committee Recommended/Budgeted Items:**

- a) Construct a 9<sup>th</sup> -10<sup>th</sup> grade center (Lovelady HS) phase 1 – **Complete 2021**
- b) Construct Elementary #6 (Mayfield Elem.) (Bond 2017) – **Complete 2022**
- c) Construct Middle School #3 (Mattei MS) – **Under Construction 2023**
- d) Construct 9<sup>th</sup> – 10<sup>th</sup> Grade Center (Lovelady HS) phase 2 – **Scheduled 2024**
- e) Construct Elementary #7 (Green Elem.) – **Scheduled 2024**
- f) Construct Elementary #8 (James Elem.)– **Scheduled 2024**

### **Committee Recommended/Not Budgeted Items:**

- a) Renovate Huddleston to Early Childhood Center (Canup EC) – **Complete 2020**

### **Committee Recommended Zoning:**

# 2018 Demographic Study

## GRADE LEVEL ENROLLMENT HISTORY AND PROJECTIONS

Year (Oct.)	EE/PK	K	1st	2nd	3rd	4th	5th	6th	7th	8th	9th	10th	11th	12th	Total	Total Growth	% Growth
2014/15	164	284	323	301	292	238	325	275	275	265	303	261	256	228	3,790		
2015/16	221	269	310	310	304	284	244	317	276	282	294	269	275	220	3,875	85	2.24%
2016/17	245	299	287	343	327	324	306	272	327	302	323	279	283	243	4,160	285	7.35%
2017/18	226	362	327	289	349	342	350	342	286	334	324	321	280	249	4,381	221	5.31%
2018/19	257	357	406	359	329	392	372	397	385	311	381	332	349	261	4,888	507	11.57%
2019/20	257	395	406	459	405	367	434	428	451	431	364	404	359	335	5,495	607	12.42%
2020/21	257	458	462	454	529	471	422	482	473	485	496	371	424	331	6,115	620	11.28%
2021/22	257	496	520	501	499	580	518	478	541	518	534	513	398	386	6,739	624	10.20%
2022/23	257	542	561	565	551	546	634	565	535	593	591	554	548	371	7,413	674	10.00%
2023/24	257	610	619	613	633	621	611	697	630	583	670	609	589	505	8,247	834	11.25%
2024/25	257	667	696	673	670	694	687	659	746	662	655	693	650	542	8,951	704	8.54%
2025/26	257	740	755	755	728	721	735	746	705	805	728	678	739	601	9,693	742	8.29%
2026/27	257	778	834	810	810	782	764	794	783	756	900	721	678	682	10,349	656	6.77%
2027/28	257	834	860	877	864	863	823	810	834	803	842	891	721	625	10,904	555	5.36%
2028/29	257	873	931	915	941	927	911	886	851	851	892	834	891	666	11,626	722	6.62%

**Final Report of the Long Range Planning Committee To  
Princeton ISD Board of Trustees  
January 28, 2019**

- Preface:** Pursuant to the request from the Princeton ISD Board of Trustees, this committee met on five separate occasions with Superintendent Philip Anthony to:
- Review and edit current Long Range Facility Plan
  - Tour and Audit current facility capacities
  - Conduct facility needs assessment
  - Review demographic study
  - Place facility needs on a timeline per demographic study
  - Determine cost projections for projects
  - Review financial implications of projects
  - Recommend future construction and financing options
  - Recommend elementary and middle school attendance zones
  - Recommend names for facilities

This Final Report constitutes the consensus recommendation of the Long Range Planning Committee.

**1) Construction Recommendations:**

The LRP committee recommends the Board provide the following facilities in accordance with the amended campus alignment chart. In addition, the committee recommends the demographic projections from the 2018 study as a base timeline for construction projections.

- b) Construct a 9<sup>th</sup> -10<sup>th</sup> grade center to 1,800 capacity (2 phases)
- c) Construct Middle School #3
- d) Construct Elementary #7
- e) Construct Elementary #8

Additionally, the committee strongly urges the Trustees to make every effort to find ways to provide a District Auditorium of sufficient size (1,200 – 1,500) to accommodate district wide activities.

\*\* See amended Campus Alignment Chart attached

**2) Finance Recommendations**

With appropriate respect to vagaries of school finance and cost projections, the committee believes that the Trustees should call a bond approval election on May 4<sup>th</sup>, 2019, for a capital amount sufficient to fund all of the priority issues noted in item (1) above. Based on analysis provided by the district's architects and financial advisors, we believe this amount to be \$237,400,000. The committee additionally recommends that the Board sequences, and possibly restrict, the sale of the authorized instruments, in order to limit the increase (above current level) of PISD debt service tax levy to no more than 5 cents per \$100 valuation.

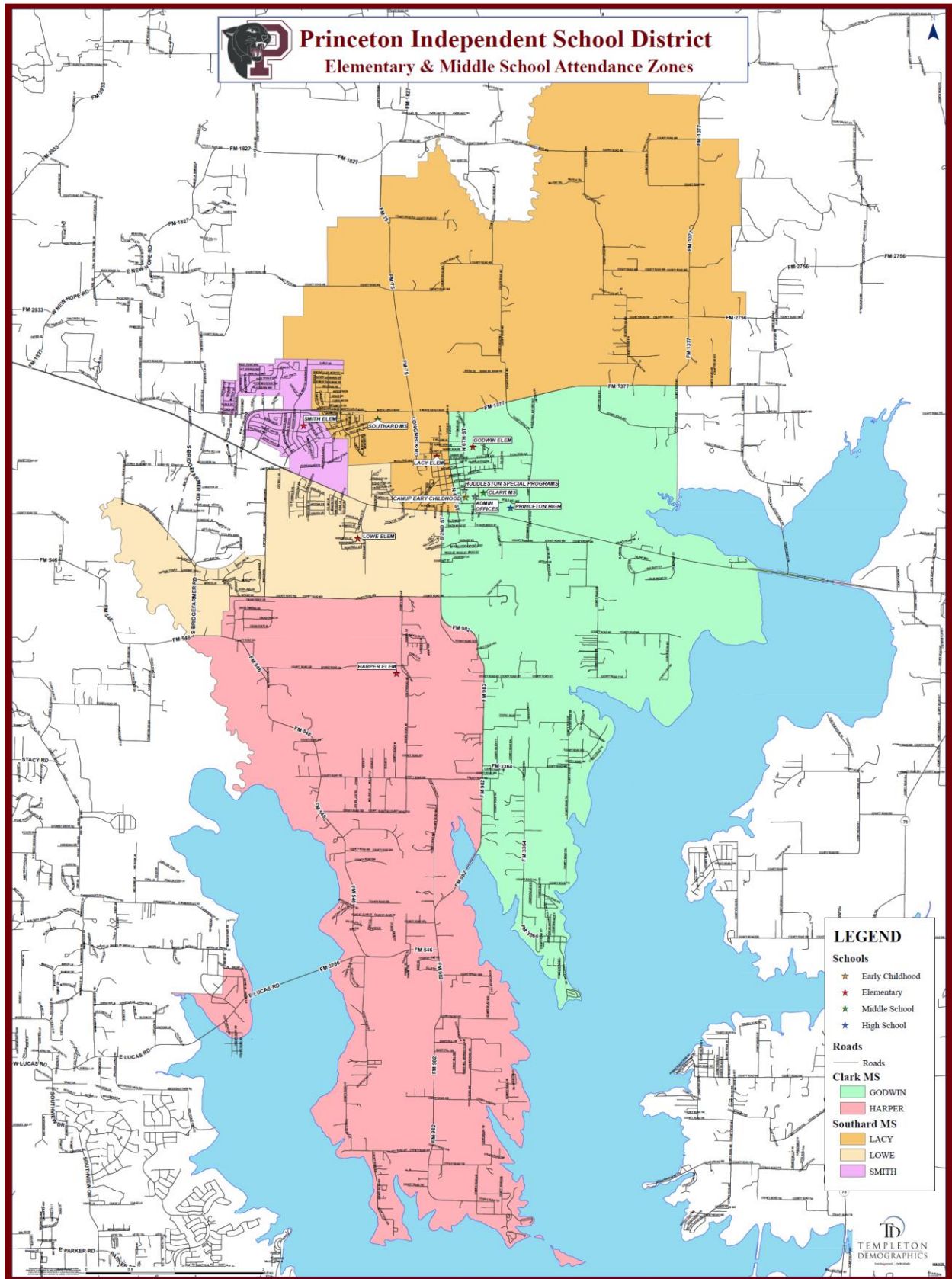
**3) Zoning Recommendations**

Maps attached. **Committee Recommended Zoning:**

#### 4) Naming Recommendations

Early Childhood Center	-	Nellie Canup
Special Programs	-	L.R. Huddleston
Elementary #6	-	Mary Mayfield
Elementary #7	-	Marcella Green
Elementary #8	-	Janice James
Middle School #3	-	Buddy and Marilyn Mattei
9 <sup>th</sup> 10 Grade Center	-	Bob and Jean Lovelady
Community Education	-	Joyce Carrell
High School #2	-	Philip Anthony

In addition, the committee would recommend the Board consider naming additional facilities such as Ag. Barn, Fine Arts Center, and Administration Building.



**CERTIFICATE FOR ORDER CANVASSING A BOND ELECTION**

**STATE OF TEXAS** §  
**COLLIN COUNTY** §  
**PRINCETON INDEPENDENT SCHOOL DISTRICT** §

We, the undersigned officers of the Board of Trustees of the Princeton Independent School District, hereby certify as follows:

1. The Board of Trustees of the District convened in a \_\_\_\_\_ MEETING ON THE \_\_\_ DAY OF MAY, 2019, at the appointed meeting place, and the roll was called of the duly constituted officers and members of the Board, to wit:

- Carol Bodwell, President
- Bob Lovelady, Vice President
- Lisa Caldwell, Secretary
- Joe Gilliam
- Ricky Gillespie
- Chad Jones
- John Murray

and all of the persons were present, except the following absentees: \_\_\_\_\_, thus constituting a quorum. Whereupon, among other business, the following was transacted at the Meeting: a written

**ORDER CANVASSING A BOND ELECTION**

was duly introduced for the consideration of the Board. It was then duly moved and seconded that the Order be passed; and, after due discussion, the motion, carrying with it the passage of the Order, prevailed and carried by the following vote:

AYES: All members of the Board shown present above voted "Aye," except as set forth below.

NOES: None ABSTAIN: None

2. That a true, full and correct copy of the aforesaid Order passed at the Meeting described in the above and foregoing paragraph is attached to and follows this Certificate; that the Order has been duly recorded in the Board's minutes of the Meeting; that the above and foregoing paragraph is a true, full and correct excerpt from the Board's minutes of the Meeting pertaining to the passage of the Order; that the persons named in the above and foregoing paragraph are the duly chosen, qualified and acting officers and members of the Board as indicated therein; that each of the officers and members of the Board was duly and sufficiently notified officially and personally, in advance, of the time, place and purpose of the aforesaid Meeting, and that the Order would be introduced and considered for passage at the Meeting, and each of the officers and members consented, in advance, to the holding of the Meeting for such purpose; that the Meeting was open to the public and public notice of the time, place and purpose of the Meeting as given, all as required by Chapter 551, Government Code.

SIGNED the \_\_ day of May, 2019

\_\_\_\_\_  
Secretary, Board of Trustees

\_\_\_\_\_  
President, Board of Trustees

Election Summary Report  
Collin County, Texas General and Special  
Elections May4, 2019  
Summary For Jurisdiction Wide, All Counters, All Races  
Early Voting and Election Day Combined Accumulated Totals.  
47of 47 Vote Centers Reporting.

**Princeton ISD Proposition**

	Total	
Number of Precincts	9	
Precincts Reporting	9	100.0 %
Vote For	1	
Times Counted	590/10691	5.5%
Total Votes	589	
Times Blank Voted	1	
Times Over Voted	0	
Number OfUnder Votes	0	
FOR	459	77.93%
AGAINST	130	22.07%

## Executive Summary 2017 Long Range Planning Committee

A Long Range Planning Committee met during the 2016 – 2017 school year according to the process on page 6 of this study. They presented their Final Recommendations to the Board of Trustees on January 12, 2017. At the same meeting the Board called for a Bond Election in the amount of \$93.6 Million for the purpose of construction, equipment, and renovation of school buildings and for the purchase of necessary sites. The Election was held on May 6, 2017 and passed 463 to 122. Construction began summer 2017. In addition to Facility needs, the committee recommended future school sites (JH Site NE Quadrant, Combo JH/HS Site SW Quadrant, Elementary Site NW Quadrant, and Elementary Site SW Quadrant). Committee will be recalled to consider attendance zones during construction of Elementary #5.

### Committee Recommended/Budgeted Items:

- a) Expand Jr. High #2 (Southard MS) to 900 capacity during original construction – **Complete 2019**
- b) Construct additional Game Field for 2 Jr. Highs – **Complete 2019**
- c) Construct Elementary #5 (Lowe Elem.) – **Complete 2019**
- d) Construct Elementary #6 (Mayfield Elem.)– **Complete 2022**
- e) Renovate Lacy Elementary – **Complete 2017**
- f) Renovate Godwin Elementary – **Complete 2017**
- g) Replace and Widen Bois D’arc – **Complete 2018**
- h) Concrete Drives and Parking – **Complete 2018**
- i) Turf Baseball and Softball fields – **Complete 2019**
- j) Purchase School Sites
  1. Jr. High Site (NE Quadrant) – **Purchased 2017**
  2. Combo Jr. High/High School Site (SW Quadrant) – **Purchased 2017**
  3. Elementary Site (NW Quadrant) – **Purchased 2022**

### Committee Recommended/Not Budgeted Items:

- a) Add Canopy at Harper – **Complete 2017**
- b) Add Playground Arbor at Smith – **Complete 2017**
- c) Renovations Clark (Flooring, Sidewalk and Crosswalk) – **Complete 2018**
- d) Renovations Auxiliary Services (Restrooms, Breakroom) – **Complete 2019**
- e) Convert Huddleston (Daycare, Pre-K, Technology, Instructional) – **Complete 2020**
- f) Replace Carpet at Harper – **Complete 2020**
- g) Update Voice over IP System – **Complete 2018**

# 2016 Demographic Study

## Low-Range Projections

Fall	Grade														Total	School Type			
	EE	PK	K	1st	2nd	3rd	4th	5th	6th	7th	8th	9th	10th	11th		12th	EE-5	MS	HS
2017	10	217	307	321	294	346	337	337	311	281	348	333	305	283	275	4305	2169	940	1196
2018	11	229	313	327	331	300	352	351	345	321	291	378	315	309	275	4448	2214	957	1277
2019	11	241	319	333	337	337	306	366	359	355	331	321	360	319	301	4596	2250	1045	1301
2020	11	253	325	339	343	343	343	320	374	369	365	361	303	364	311	4724	2277	1108	1339
2021	11	265	331	345	349	349	349	357	328	384	379	395	343	307	356	4848	2356	1091	1401
2022	11	277	337	351	355	355	355	363	365	338	394	409	377	347	299	4933	2404	1097	1432
2023	12	289	343	357	361	361	361	369	371	375	348	424	391	381	339	5082	2453	1094	1535
2024	12	301	349	363	367	367	367	375	377	381	385	378	406	395	373	5196	2501	1143	1552
2025	12	313	355	369	373	373	373	381	383	387	391	415	360	410	387	5282	2549	1161	1572
2026	12	325	361	375	379	379	379	387	389	393	397	421	397	364	402	5360	2597	1179	1584

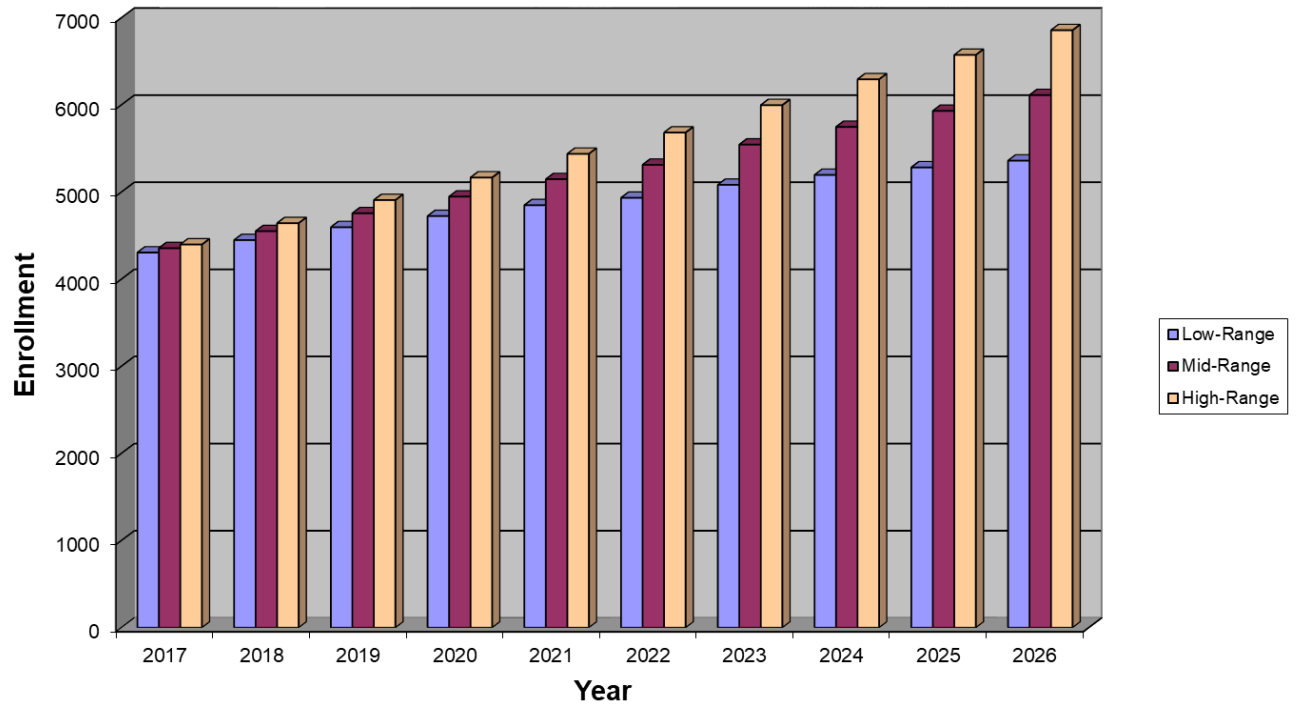
## Mid-Range Projections

Fall	Grade														Total	School Type			
	EE	PK	K	1st	2nd	3rd	4th	5th	6th	7th	8th	9th	10th	11th		12th	EE-5	MS	HS
2017	11	220	316	326	297	349	340	340	313	286	352	334	307	285	279	4355	2199	951	1205
2018	11	234	331	341	339	306	358	357	350	328	300	383	318	313	281	4550	2277	978	1295
2019	12	249	346	356	354	348	315	375	366	365	341	331	366	324	308	4756	2355	1072	1329
2020	12	263	361	371	369	363	356	332	384	381	378	372	314	372	319	4947	2427	1143	1377
2021	13	278	376	386	384	378	371	373	341	399	395	409	356	320	368	5147	2559	1135	1453
2022	13	292	391	401	399	393	386	388	383	356	413	426	393	362	316	5312	2663	1152	1497
2023	14	307	406	416	414	408	401	403	398	398	370	444	409	399	357	5544	2769	1166	1609
2024	14	321	421	431	429	423	416	418	413	413	411	401	427	415	394	5747	2873	1237	1637
2025	15	336	436	446	444	438	431	433	428	428	426	442	384	433	411	5931	2979	1282	1670
2026	15	350	451	461	459	453	446	448	443	443	441	457	426	390	429	6112	3083	1327	1702

## High Range Projections

Fall	Grade														Total	School Type			
	EE	PK	K	1st	2nd	3rd	4th	5th	6th	7th	8th	9th	10th	11th		12th	EE-5	MS	HS
2017	11	222	325	330	300	352	342	343	314	291	355	335	308	287	282	4397	2225	960	1212
2018	12	239	349	354	346	312	363	362	354	334	308	387	320	316	286	4642	2337	996	1309
2019	13	256	373	378	370	358	323	383	373	374	351	340	372	328	315	4907	2454	1098	1355
2020	13	273	397	402	394	382	369	343	394	393	391	383	325	380	327	5166	2573	1178	1415
2021	14	290	421	426	418	406	393	389	354	414	410	423	368	333	379	5438	2757	1178	1503
2022	15	307	445	450	442	430	417	413	400	374	431	442	408	376	332	5682	2919	1205	1558
2023	16	324	469	474	466	454	441	437	424	420	391	463	427	416	375	5997	3081	1235	1681
2024	17	341	493	498	490	478	465	461	448	444	437	423	448	435	415	6293	3243	1329	1721
2025	18	358	517	522	514	502	489	485	472	468	461	469	408	456	434	6573	3405	1401	1767
2026	18	375	541	546	538	526	513	509	496	492	485	493	454	416	455	6857	3566	1473	1818

## Demographic Projections 2016 Study



**Final Report of the Long Range Planning Committee To  
Princeton ISD Board of Trustees  
January 12, 2017**

- Preface:** Pursuant to the request from the Princeton ISD Board of Trustees, this committee met on five separate occasions with Superintendent Philip Anthony to:
- Review and edit current Long Range Facility Plan
  - Recommend general locations for future school sites
  - Tour and Audit current facility capacities
  - Conduct facility needs assessment
  - Review demographic study
  - Place facility needs on a timeline per demographic study
  - Determine cost projections for projects
  - Review financial implications of projects
  - Recommend future construction and financing options.

This Final Report constitutes the consensus recommendation of the Long Range Planning Committee.

**4) Construction / Renovation Priorities:**

The LRP committee recommends the Board provide the following facilities in accordance with previously approved campus alignment chart. In addition the committee recommends the mid-range demographic projections from the 2016 study as a base timeline for construction projections.

- a) Expand Jr. High #2 to 900 capacity during original construction
- b) Construct additional Game Field for 2 Jr. Highs
- c) Construct Elementary #5
- d) Construct Elementary #6
- e) Renovate Lacy Elementary
- f) Renovate Godwin Elementary
- g) Replace and Widen Bois D'arc
- h) Concrete Drives and Parking
- i) Turf Baseball and Softball fields
- j) Purchase School Sites
  - 1. Jr. High Site (NE Quadrant)
  - 2. Combo Jr. High/High School Site (SW Quadrant)
  - 3. Elementary Site (NW Quadrant)
  - 4. Elementary Site (SW Quadrant)

**2) Finance Recommendations**

With appropriate respect to vagaries of school finance and cost projections, the committee believes that the Trustees should call a bond approval election on May 6<sup>th</sup>, 2017 for a capital amount sufficient to fund all of the priority issues noted in item (1) above. Based on analysis provided by the district's architects and financial advisors, we believe this amount to be \$93,600,000. The committee additionally recommends that the Board sequences, and possibly restrict, the sale of the authorized instruments, in

order to limit the increase (above current level) of PISD debt service tax levy to no more than 5 cents per \$100 valuation.

**CERTIFICATE REGARDING ADOPTION OF ORDER**

THE STATE OF TEXAS '
COLLIN COUNTY '
PRINCETON INDEPENDENT SCHOOL DISTRICT '

We, the undersigned officers of the Board of Trustees of the District, hereby certify as follows:

1. The Board of Trustees of the Princeton Independent School District convened in a REGULAR MEETING ON THE 12<sup>TH</sup> DAY OF JANUARY, 2017, at the regular designated meeting place, and the roll was called of the duly constituted officers and members of the Board, to wit:

- Carol Bodwell, President
- Bob Lovelady, Vice President
- John Murray, Secretary
- Lisa Caldwell
- Brent Collins
- Ricky Gillespie
- Kyle Strickland

and all of the persons were present, except the following absentee: Brent Collins, Kyle Strickland, thus constituting a quorum. Whereupon, among other business, the following was transacted at the Meeting: a written

**ORDER CALLING A BOND ELECTION AND PROVIDING NOTICE OF THE ELECTION**

was duly introduced for the consideration of the Board. It was then duly moved and seconded that the Order be passed; and, after due discussion, the motion, carrying with it the passage of the Order, prevailed and carried by the following vote:

- AYES: All members of the Board shown present above voted "Aye," except as provided below:
- NOES: None
- ABSTAIN: None

2. A true, full and correct copy of the aforesaid Order passed at the Meeting described in the above and foregoing paragraph is attached to and follows this Certificate; that the Order has been duly recorded in the Board's minutes of the Meeting; that the above and foregoing paragraph is a true, full and correct excerpt from the Board's minutes of the Meeting pertaining to the passage of the Order; that the persons named in the above and foregoing paragraph are the duly chosen, qualified and acting officers and members of the Board as indicated therein; that each of the officers and members of the Board was duly and sufficiently notified officially and personally, in advance, of the time, place and purpose of the aforesaid Meeting, and that the Order would be introduced and considered for passage at the Meeting, and each of the officers and members consented, in advance, to the holding of the Meeting for such purpose;

that the Meeting was open to the public and public notice of the time, place and purpose of the Meeting as given, all as required by Chapter 551, Government Code.

**SIGNED** this, the 12th day of January, 2017

\_\_\_\_\_  
Secretary, Board of Trustees

\_\_\_\_\_  
Board of Trustees

\_\_\_\_\_  
President,

## Election Results

Election Summary Report Collin County, Texas General and Special Elections May 6, 2017 Summary For Jurisdiction Wide, All Counters, All Races Early Voting and Election Day Combined Accumulated Totals 44 of 44 Vote Centers Reporting	Date:05/11/17 Time:12:42:18 Page:1 of 13
---	--

Registered Voters 531652 - Cards Cast 63209 11.89%

Num. Report Precinct 214 - Num. Reporting 214 100.00%

Princeton ISD Proposition		(790)	
	Total		
Number of Precincts	8		
Precincts Reporting	8	100.0	%
Vote For	1		
Times Counted	593/9073	6.5	%
Total Votes	585		
Times Blank Voted	8		
Times Over Voted	0		
Number Of Under Votes	0		
<b>For</b>	463	79.15%	
<b>Against</b>	122	20.85%	

## **Executive Summary 2013 Long Range Planning Committee**

A Long Range Planning Committee met during the 2013 – 2014 school year according to the process on page 6 of this study. They presented their Final Recommendations to the Board of Trustees on February 17, 2014. At the same meeting the Board called for a Bond Election in the amount of \$49.5 Million for the purpose of construction, equipment, and renovation of school buildings and for the purchase of necessary sites. The Election was held on May 10, 2014 and passed 423 to 199. Construction began summer 2015. In addition to Facility needs, the committee recommended elementary attendance zones and campus names. The Board approved elementary attendance zones and campus names for Elementary #4 and CATE center.

### **Committee Recommended/Budgeted Items Completed:**

- a) High School Expansion (PHS) to accommodate 1,800 students – **Complete 2016**
- b) 2<sup>nd</sup> Jr. High School (Southard MS) to accommodate 600 students, expandable to 900 students – **Complete 2019**
- c) CATE Center Expansion – **Complete 2020**

### **Committee Recommended/Not Budgeted Items Completed:**

- h) Replace Roofs Special Programs, Lacy, Huddleston Kitchen – **Complete 2016**
- i) Replace HVAC Units Lacy, Godwin, Huddleston – **Ongoing**
- j) Replace Entrance Doors at Clark – **Complete 2018**
- k) Upgrade Technology (Wi-Fi, Wiring Infrastructure) – **Complete 2018**
- l) Convert Huddleston (CATE, Special Programs) – **Complete 2020**
- m) Additional Parking at Godwin – **Complete 2015**
- n) Enlarge Bus Lot – **Complete 2018**
- o) Add Bus Wash Bay – **Complete 2015**
- p) Irrigation Well – **Complete 2016**
- q) Stadium Renovations (Seating, Parking, Fieldhouse) – **Complete 2016**
- r) Stadium Renovations (Restrooms) – **Complete 2017**
- s) Playground Arbor at Harper – **Complete 2015**
- t) Lacy Renovations (Bus Loop, Parking, Fencing, Sidewalks) – **Complete 2015**

### **Committee Recommended Zoning:**

- a) See Zoning Map page 11

**Committee Recommended Campus Names:**

- a) Leta Horn Smith Elementary (Elementary #4)
- b) Carol Bodwell Career and Technology Education Center
- c) Deborah and James Southard Jr. High (Jr. High #2)
- d) Dorothy Lowe Elementary (Elementary #5)
- e) Juanell Canup Early Childhood Center
- f) L.R. Huddleston Special Programs Center (Shift when 2<sup>nd</sup> Jr. High Constructed)
- g) Frank Garner (Unspecified Location)

# 2013 Demographic Study

## Low-Range Projections

Fall	Grade														Total	School Type			
	EE	PK	K	1st	2nd	3rd	4th	5th	6th	7th	8th	9th	10th	11th		12th	EE-5	6-8	9-12
2014	10	158	296	297	290	303	232	308	272	263	262	288	274	224	231	3708	1894	797	1017
2015	10	161	303	304	303	295	310	239	313	280	263	283	281	262	219	3826	1925	856	1045
2016	11	164	310	311	310	308	302	317	244	321	280	284	276	269	257	3964	2033	845	1086
2017	11	167	317	318	317	315	315	309	322	252	321	301	277	264	264	4070	2069	895	1106
2018	11	170	324	325	324	322	322	322	314	330	252	342	294	265	259	4176	2120	896	1160
2019	11	173	331	332	331	329	329	329	327	322	330	273	335	282	260	4294	2165	979	1150
2020	11	176	338	339	338	336	336	336	334	335	322	351	266	323	277	4418	2210	991	1217
2021	12	179	345	346	345	343	343	343	341	342	335	343	344	254	318	4533	2256	1018	1259
2022	12	182	352	353	352	350	350	350	348	349	342	356	336	332	249	4613	2301	1039	1273
2023	12	185	359	360	359	357	357	357	355	356	349	363	349	324	327	4769	2346	1060	1363

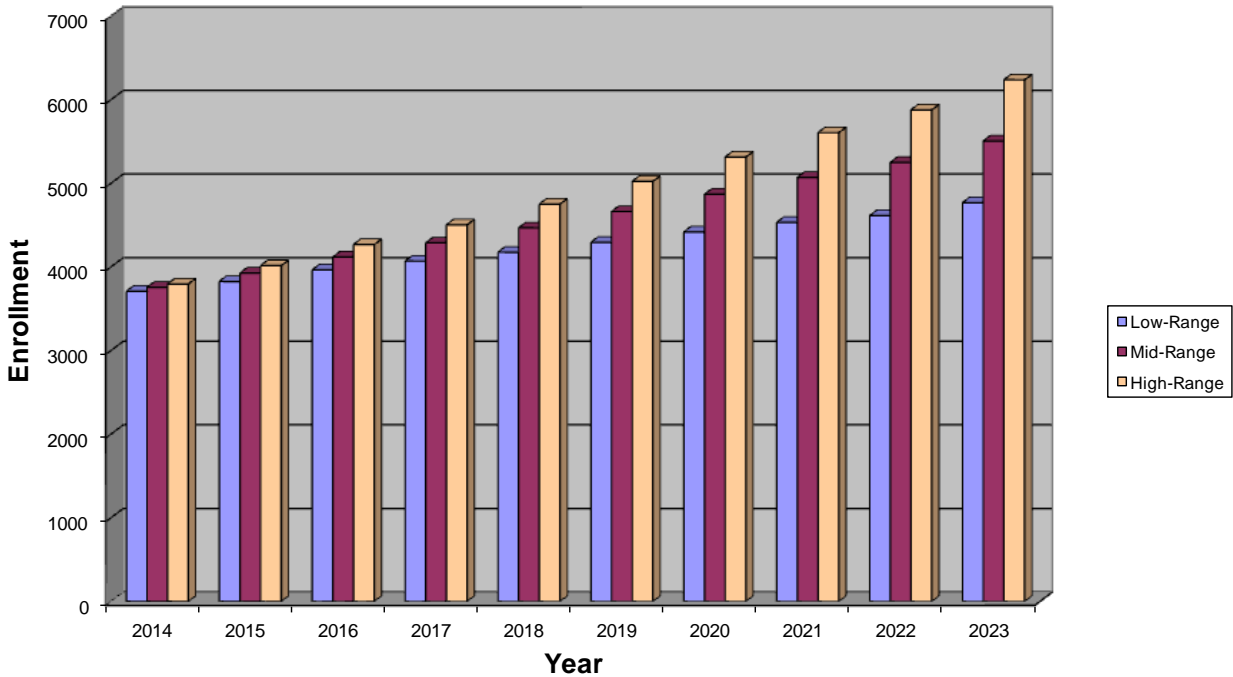
## Mid-Range Projections

Fall	Grade														Total	School Type			
	EE	PK	K	1st	2nd	3rd	4th	5th	6th	7th	8th	9th	10th	11th		12th	EE-5	6-8	9-12
2014	10	163	305	300	294	308	235	310	275	265	265	291	275	226	233	3755	1925	805	1025
2015	11	171	320	316	310	304	318	244	318	285	268	288	285	265	223	3926	1994	871	1061
2016	11	179	336	331	325	320	313	327	251	328	287	291	282	275	262	4118	2142	866	1110
2017	12	187	351	347	341	335	329	322	334	261	330	311	285	272	271	4288	2224	925	1139
2018	12	195	367	362	356	351	345	338	330	344	264	354	305	275	269	4467	2326	938	1203
2019	13	203	382	378	372	366	360	354	346	340	347	287	348	295	272	4663	2428	1033	1202
2020	14	211	398	393	387	382	376	369	361	356	342	370	281	338	291	4869	2530	1059	1280
2021	14	219	413	409	403	397	391	385	377	371	358	366	364	271	334	5072	2631	1106	1335
2022	15	227	429	424	418	413	407	400	392	387	374	382	360	354	268	5250	2733	1153	1364
2023	15	235	444	440	434	428	422	416	408	402	389	397	376	350	351	5507	2834	1199	1474

## High Range Projections

Fall	Grade														Total	School Type			
	EE	PK	K	1st	2nd	3rd	4th	5th	6th	7th	8th	9th	10th	11th		12th	EE-5	6-8	9-12
2014	11	168	313	303	297	313	237	312	277	267	267	293	276	228	234	3796	1954	811	1031
2015	11	181	337	327	316	312	325	248	322	289	272	293	288	268	226	4015	2057	883	1075
2016	12	194	361	351	340	331	324	336	258	334	294	298	288	280	266	4267	2249	886	1132
2017	13	207	385	375	364	355	343	335	346	270	339	320	293	280	278	4503	2377	955	1171
2018	14	220	409	399	388	379	367	354	345	358	275	365	315	285	278	4751	2530	978	1243
2019	15	233	433	423	412	403	391	378	364	357	363	301	360	307	283	5023	2688	1084	1251
2020	16	246	457	447	436	427	415	402	388	376	362	389	296	352	305	5314	2846	1126	1342
2021	16	259	481	471	460	451	439	426	412	400	381	388	384	288	350	5606	3003	1193	1410
2022	17	272	505	495	484	475	463	450	436	424	405	407	383	376	286	5878	3161	1265	1452
2023	18	285	529	519	508	499	487	474	460	448	429	431	402	375	374	6238	3319	1337	1582

# Demographic Projections 2013 Study



**Final Report of the Long Range Planning Committee To  
Princeton ISD Board of Trustees  
February 17, 2014**

**Preface:** Pursuant to the request from the Princeton ISD Board of Trustees, this committee met on six separate occasions with Superintendent Philip Anthony to:

- Review and edit current Long Range Facility Plan
- Review and Edit current Campus Alignment Chart
- Tour and Audit current facility capacities
- Conduct facility needs assessment
- Review demographic study
- Place facility needs on a timeline per demographic study
- Determine cost projections for projects
- Review financial implications of projects
- Recommend future construction, financing options, and elementary attendance zones

This Final Report constitutes the consensus recommendation of the Long Range Planning Committee.

**3) Campus Alignment / Facility Needs Assessment**

- a) Major additions to High School when High School enrollment exceeds 1,100 students (275 per)
- b) Shift Clark Jr. High to serve ½ of grades 6-8 and build new Jr. High #2 to serve ½ of grades 6-8 and when 6-8 enrollment exceeds 900 students (300 per)
- c) New Elementary #5 when Elementary enrollment exceeds 2,400 students (400 per)
- d) Major additions to Jr. High #2 when 6-8 enrollment exceeds 1,200 (400 per)
- e) New Elementary #6 when Elementary enrollment exceeds 3,000 students (500 per)
- f) New Jr. High #3 to serve ½ of grades 6-8 and shift Clark to serve 9<sup>th</sup> grade when 6-8 enrollment exceeds 1,500 (500 per) or High School enrollment exceeds 1,800 (450 per)  
(Note: Although labeled Jr. High #3, there are only 2 Jr. Highs due to shifting Clark to a 9<sup>th</sup> grade center)

\*\* See Campus Alignment Chart attached.

**4) Construction / Renovation Priorities**

- a) Expansion and Renovation of High School to Accommodate 1,800 students
- b) Construction of a new Jr. High to Accommodate 600 students
- c) Convert Huddleston and expand Special Programs and CATE Programs

\*\* See Demographic Study Attachment

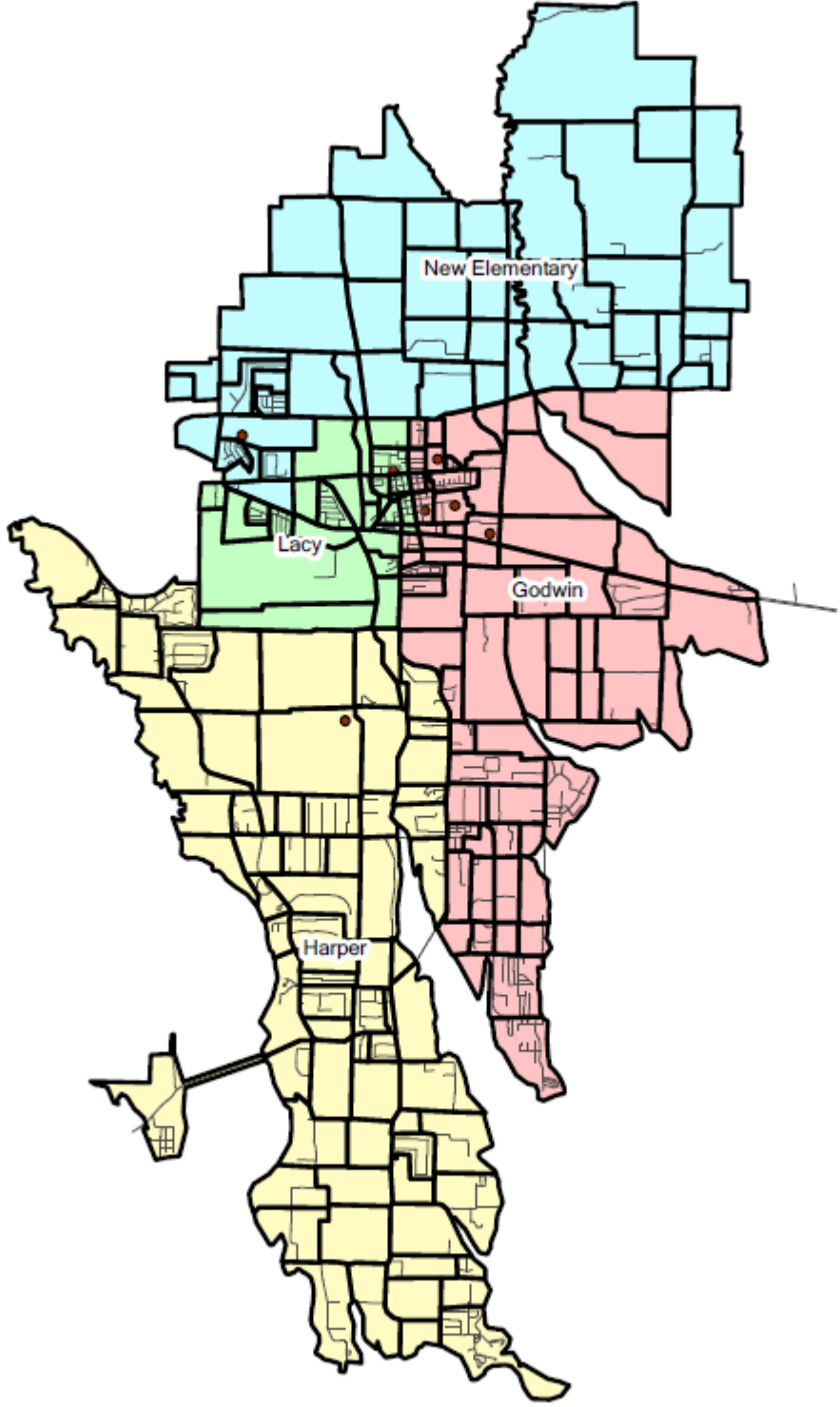
**5) Finance Recommendations**

With appropriate respect to vagaries of school finance and cost projections, the committee believes that the Trustees should call a bond approval election on May 10<sup>th</sup>, 2014; followed by a TRE in June of 2014 for a capital amount sufficient to fund all 3 of the priority issues noted in item (2) above. Based on analysis provided by the district's architects and financial advisors, we believe this amount to be \$49,500,000. The committee additionally recommends that the Board sequences, and possibly restrict, the sale of the authorized instruments, in order to limit the increase (above current level) of PISD debt service tax levy to no more than 16 cents per \$100 valuation.

**6) Elementary Zoning Recommendations**

- a) A map of recommended Zoning is attached

# Committee Recommendation





7. At the election the following PROPOSITION, setting forth the purpose for which the bonds shall be authorized, shall be submitted in accordance with law:

PROPOSITION

Shall the Board of Trustees of Princeton Independent School District be authorized to issue the bonds of the District, in one or more series, with the bonds of each such series or issue, respectively, to mature serially within not to exceed 40 years from their date, and to be sold at such prices and bear interest at such rates as shall be determined within the discretion of the Board of Trustees, in the aggregate principal amount of \$49,500,000, for the purpose of the acquisition, construction and equipment of school buildings in the District and the purchase of school sites, with the bonds to mature, bear interest, and be issued and sold in accordance with law at the time of issuance; and shall the Board of Trustees be authorized to levy and pledge, and cause to be assessed and collected, annual ad valorem taxes, on all taxable property in the District, sufficient, without limit as to rate or amount, to pay the principal of and interest on the bonds and the cost of any credit agreements executed in connection with the bonds?

8. The official ballots for the election shall be prepared in accordance with the Texas Election Code so as to permit the electors to vote "FOR" or "AGAINST" the aforesaid PROPOSITION with the ballots to contain such provisions, markings and language as required by law, and with such PROPOSITION to be expressed substantially as follows:

PROPOSITION

FOR	_____	)	THE ISSUANCE OF \$49,500,000 OF BONDS BY
		)	PRINCETON INDEPENDENT SCHOOL DISTRICT FOR
		)	THE ACQUISITION, CONSTRUCTION AND EQUIPMENT
		)	OF SCHOOL BUILDINGS AND THE PURCHASE OF
AGAINST	_____	)	SCHOOL SITES AND LEVYING THE TAX IN PAYMENT
		)	THEREOF.

9. In accordance with the provisions of Section 3.009(b), Texas Election Code, it is hereby found and determined that:

(a) The proposition language that will appear on the ballot is set forth in Section 8 hereof.

(b) The purpose for which the bonds are to be authorized is set forth in Section 7 hereof.

(c) The principal amount of the debt obligations to be authorized is set forth in Sections 7 and 8 hereof.

(d) As set forth in Sections 7 and 8 hereof, if the bonds are approved by the voters, the Board of Trustees will be authorized to levy annual ad valorem taxes, on all taxable property

in the District, sufficient, without limit as to rate or amount, to pay the principal of and interest on the bonds and the cost of any credit agreements executed in connection with the bonds.

(e) Based upon the bond market conditions at the date of adoption of this Order, the maximum interest rate for any series of the bonds is estimated to be 5.0% as calculated in accordance with applicable law. Such estimate takes into account a number of factors, including the issuance schedule, maturity schedule and the expected bond ratings of the proposed bonds. Such estimated maximum interest rate is provided as a matter of information, but is not a limitation on the interest rate at which the bonds, or any series thereof, may be sold.

(f) As set forth in Section 7 hereof, if the bonds are approved, they may be issued in one or more series, to mature serially, over a period not to exceed 40 years.

(g) The aggregate amount of the outstanding principal of the District's debt obligations (all of which are secured by an unlimited tax levied for debt service purposes) as of the beginning of the District's 2013-14 fiscal year is \$79,455,420.

(h) The aggregate amount of the outstanding interest of the District's debt obligations (all of which are secured by an unlimited tax levied for debt service purposes) as of the beginning of the District's 2013-14 fiscal year is \$78,089,345.

(i) The ad valorem debt service tax rate for the District for the 2013-14 fiscal year is \$0.47 per \$100 of taxable assessed valuation.

-----

**CERTIFICATE FOR ORDER**

**THE STATE OF TEXAS**  
**COLLIN COUNTY**  
**PRINCETON INDEPENDENT SCHOOL DISTRICT**

,  
,  
,

We, the undersigned officers of the Board of Trustees of said District, hereby certify as follows:

1. The Board of Trustees of the District convened in a REGULAR MEETING ON THE 19TH DAY OF MAY, 2014, at the regular designated meeting place, and the roll was called of the duly constituted officers and members of the Board, to wit:

- Carol Bodwell, President
- Tim Tidwell, Vice President
- Kyle Strickland, Secretary
- Donnie Campbell, Member
- Brent Collins, Member
- Rick Gillespie, Member
- Bob Lovelady, Member

and all of the persons were present, except: \_\_\_\_\_, thus constituting a quorum. Whereupon, among other business, the following was transacted at the Meeting: a written

**ORDER CANVASSING A BOND ELECTION**

was duly introduced for the consideration of the Board. It was then duly moved and seconded that the Order be passed; and, after due discussion, the motion, carrying with it the passage of the Order, prevailed and carried by the following vote:

- AYES: All members of said Board shown present above voted "Aye", except as noted below:
- NOES: None
- ABSTENTIONS: None

2. That a true, full and correct copy of the aforesaid Order passed at the Meeting described in the above and foregoing paragraph is attached to and follows this Certificate; that the Order has been duly recorded in the Board's minutes of the Meeting; that the above and foregoing paragraph is a true, full and correct excerpt from the Board's minutes of the Meeting pertaining to the passage of the Order; that the persons named in the above and foregoing paragraph are the duly chosen, qualified and acting officers and members of the Board as indicated therein; that each of the officers and members of the Board was duly and sufficiently notified officially and personally, in advance, of the time, place and purpose of the aforesaid Meeting, and that the Order would be introduced and considered for passage at the Meeting, and each of the officers and members consented, in advance, to the holding of the Meeting for such purpose; that the Meeting was open to the public and public notice of the time, place and purpose of the Meeting as given, all as required by Chapter 551, Government Code.

SIGNED the 19<sup>th</sup> day of May, 2014

Vice President, Board of Trustees

President, Board of Trustees

Election Summary Report  
Collin County, TX  
General and Special Elections  
May 10, 2014  
Summary For Jurisdiction Wide, All Counters, Princeton ISD  
Early Voting and Election Day Combined Accumulated Totals

Date:05/16/14  
Time:15:44:22  
Page:1 of 1

Registered Voters 236613 - Cards Cast 626 0.26%

Num. Report Precinct 105 - Num. Reporting 105 100.00%

Princeton ISD Proposition		Total
Number of Precincts		8
Precincts Reporting		8 100.0 %
Vote For		1
Times Counted	626/7456	8.4 %
Total Votes		622
Times Blank Voted		4
Times Over Voted		0
Number Of Under Votes		0
<b>For</b>	423	68.01%
<b>Against</b>	199	31.99%

## Executive Summary 2007 Long Range Planning Committee

A Long Range Planning Committee met during the 2007 – 2008 school year according to the process on page 6 of this study. They presented their Final Recommendations to the Board of Trustees on February 18, 2008. At the same meeting the Board called for a Bond Election in the amount of \$46.59 Million for the purpose of construction, equipment, and renovation of school buildings and for the purchase of necessary sites. The Election was held on May 10, 2008 and passed by a vote of 341 for and 270 against. Construction began summer 2008 and is scheduled to be completed summer 2015. In addition to Facility needs the committee recommended elementary attendance zones.

### Committee Recommended / Budgeted Items Completed:

- a) Structural, Safety, and ADA Issues at Godwin Elementary – Complete 2008
- b) Structural, Safety, and ADA Issues at Lacy Elementary – Complete 2009
- c) Aux. Gym, Structural, and Safety Issues at Clark Jr. High – Complete 2009  
Classroom Addition at Clark Jr. High – Complete 2011
- d) Expansion of Ag. Barn Facilities – Complete 2008
- e) Expansion of Stadium – Complete 2009
- f) Construction of Parking & Restroom Facilities at Tennis Courts – Complete 2009
- g) Construction of Practice Fields for Baseball and Softball – Complete 2010
- h) Construction of new Multi-Purpose Facility – Complete 2009
- i) Provide additional Parking at Community Education Building – Complete 2012
- j) Provisions for construction of fourth Elementary School – Complete 2015

### Committee Recommended / Not-Budgeted Items completed: (Below Red Line)

- l) 2<sup>nd</sup> Batting Cage
- m) Pave Bus Loop at Lacy Elementary
- n) Exterior Renovation of Stadium Fieldhouse
- o) Additional Seating at Baseball / Softball
- p) Exterior Renovation of Maintenance Shop
- q) Enhance Front Entrance at Lacy Elementary
- r) Sidewalks and Parking at Central Office
- s) Career and Technology Education (CATE) Center
- t) Board Room

**Fund Balance:**

All of the above projects are complete except for Elementary #4, which is scheduled to be completed summer 2015. Any remaining bond funds after the completion of elementary #4 will be transferred to the 2014 Bond Program.

**Tax Rate Impact:**

I & S Tax Rate prior to passing the 2008 Bond was 32.87 cents. The recommendation from the Long Range Planning Committee was to limit the increase to no more than 17 cents. The actual I & S Tax Rate, however, has not increase more than 14.13 cents. The current Tax Rate is 47 cents.

# 2007 Demographic Study

## Low-Range Projections

Fall	Grade															Total	School Type			
	EE	PK	K	1st	2nd	3rd	4th	5th	6th	7th	8th	9th	10th	11th	12th		EE-5	6	7-8	9-12
2008	10	81	217	213	206	201	210	186	191	205	206	194	195	186	177	2678	1324	191	411	752
2009	10	83	223	219	214	208	203	212	187	193	204	221	174	180	161	2692	1372	187	397	736
2010	10	86	229	225	220	216	210	205	213	189	192	219	201	159	155	2729	1401	213	381	734
2011	10	88	235	231	226	222	218	212	206	215	188	207	199	186	134	2777	1442	206	403	726
2012	10	90	241	237	232	228	224	220	213	208	214	203	187	184	161	2852	1482	213	422	735
2013	10	92	247	243	238	234	230	226	221	215	207	229	183	172	159	2906	1520	221	422	743
2014	10	95	253	249	244	240	236	232	227	223	214	222	209	168	147	2969	1559	227	437	746
2015	10	97	259	255	250	246	242	238	233	229	222	229	202	194	143	3049	1597	233	451	768
2016	10	99	265	261	256	252	248	244	239	235	228	237	209	187	169	3139	1635	239	463	802
2017	10	101	271	267	262	258	254	250	245	241	234	243	217	194	162	3209	1673	245	475	816

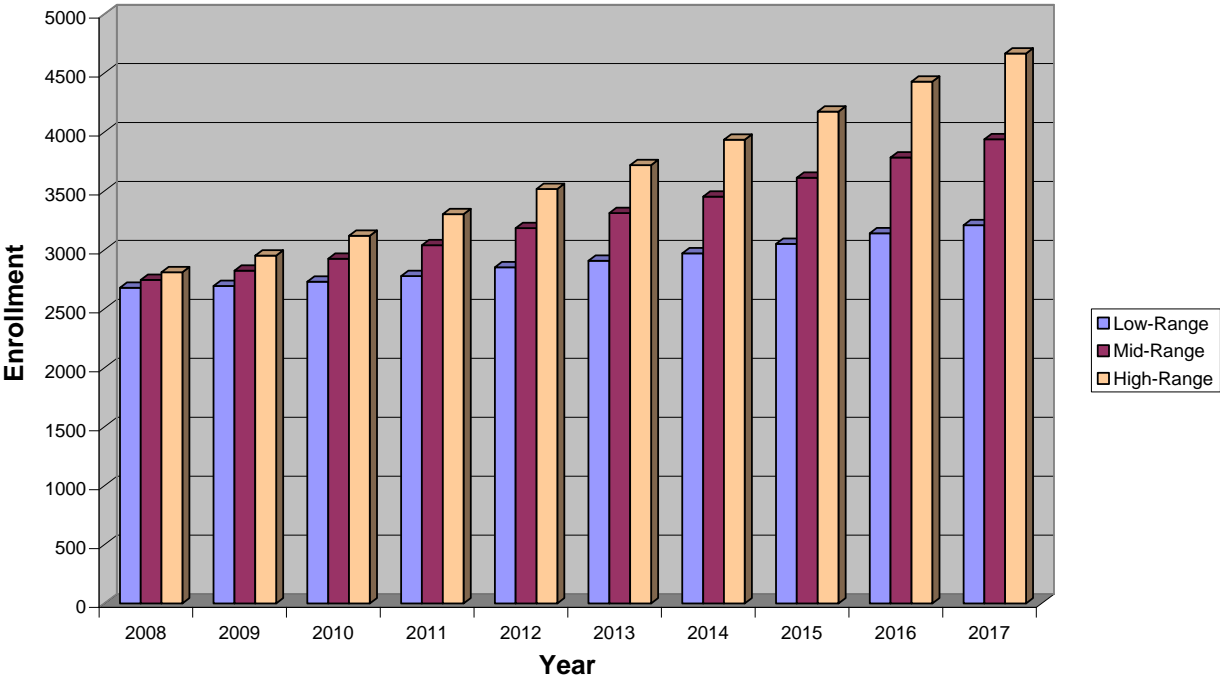
## Mid-Range Projections

Fall	Grade															Total	School Type			
	EE	PK	K	1st	2nd	3rd	4th	5th	6th	7th	8th	9th	10th	11th	12th		EE-5	6	7-8	9-12
2008	14	84	224	218	209	204	215	191	195	209	209	199	200	191	182	2744	1359	195	418	772
2009	14	89	237	231	222	214	211	222	196	201	211	229	184	190	171	2822	1440	196	412	774
2010	14	94	250	244	235	227	221	218	227	202	203	231	214	174	170	2924	1503	227	405	789
2011	14	98	263	257	248	240	234	228	223	233	204	223	216	204	154	3039	1582	223	437	797
2012	14	103	276	270	261	253	247	241	233	229	235	224	208	206	184	3184	1665	233	464	822
2013	14	108	289	283	274	266	260	254	246	239	231	255	209	198	186	3312	1748	246	470	848
2014	14	113	302	296	287	279	273	267	259	252	241	251	240	199	178	3451	1831	259	493	868
2015	14	118	315	309	300	292	286	280	272	265	254	261	236	230	179	3611	1914	272	519	906
2016	14	123	328	322	313	305	299	293	285	278	267	274	246	226	210	3783	1997	285	545	956
2017	14	128	341	335	326	318	312	306	298	291	280	287	259	236	206	3937	2080	298	571	988

## High Range Projections

	Grade															Total	School Type			
	EE	PK	K	1st	2nd	3rd	4th	5th	6th	7th	8th	9th	10th	11th	12th		EE-5	6	7-8	9-12
2008	18	86	231	223	212	207	220	196	199	213	212	204	205	196	187	2809	1393	199	425	792
2009	18	94	251	243	230	220	219	232	205	209	218	237	194	200	181	2951	1507	205	427	812
2010	18	101	271	263	250	238	232	231	241	215	214	243	227	189	185	3118	1604	241	429	844
2011	18	109	291	283	270	258	250	244	240	251	220	239	233	222	174	3302	1723	240	471	868
2012	18	116	311	303	290	278	270	262	253	250	256	245	229	228	207	3516	1848	253	506	909
2013	18	124	331	323	310	298	290	282	271	263	255	281	235	224	213	3718	1976	271	518	953
2014	18	131	351	343	330	318	310	302	291	281	268	280	271	230	209	3933	2103	291	549	990
2015	18	139	371	363	350	338	330	322	311	301	286	293	270	266	215	4173	2231	311	587	1044
2016	18	146	391	383	370	358	350	342	331	321	306	311	283	265	251	4426	2358	331	627	1110
2017	18	154	411	403	390	378	370	362	351	341	326	331	301	278	250	4664	2486	351	667	1160

# Demographic Projections 2007 Study



**Final Report of the Long Range Planning Committee  
To  
Princeton ISD Board of Trustees  
February 18, 2008**

**Preface:** Pursuant to the request from the Princeton ISD Board of Trustees, this committee met on six occasions with Superintendent Philip Anthony to (i) review the current district facility status, (ii) assess the expected demographic changes in the district, (iii) submit a recommendation to the Board as to future district facility needs, and (iv) submit a recommendation to the Board as to zoning boundaries for three elementary schools. This Final Report constitutes the consensus recommendation of the Long Rang Planning Committee.

**1) Construction / Renovation Priorities:**

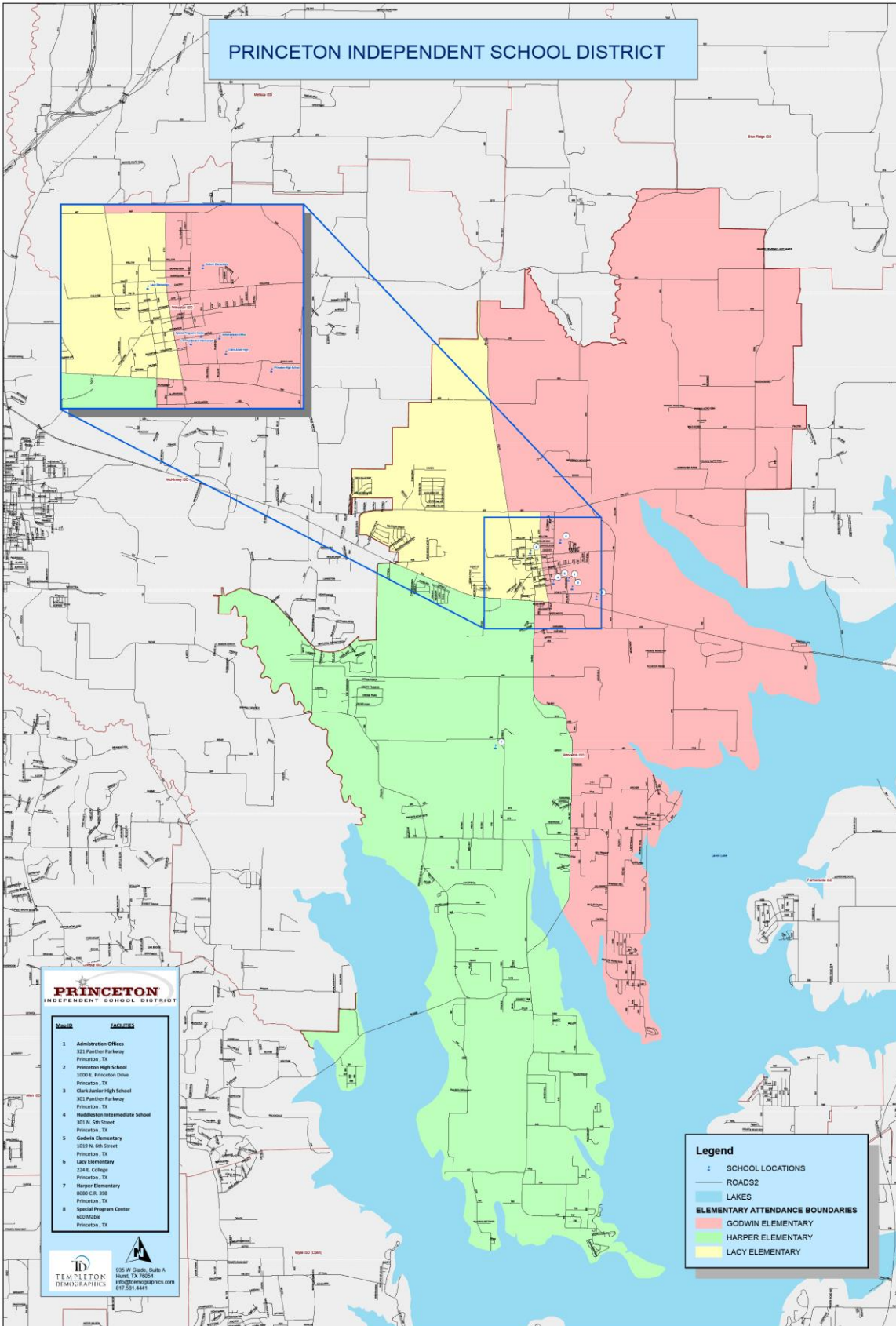
- a) Structural, Safety, and ADA Issues at Godwin Elementary
- b) Structural, Safety, and ADA Issues at Lacy Elementary
- c) Expansion, Structural, and Safety Issues at Clark Jr. High
- d) Expansion of Ag. Barn Facilities
- e) Expansion of Stadium to Accommodate 5200
- f) Construction of Parking and Restroom Facilities at Tennis Courts
- g) Construction of Additional Practice Fields for Baseball and Softball
- h) Construction of new Multi-Purpose Facility
- i) Provide additional Parking at Community Education Building
- j) Provisions for construction of fourth Elementary School when needed

**2) Finance Recommendations:**

- a) With appropriate respect for vagaries of school finance and cost projections, the committee believes that the Trustees should call a bond approval election for a capital amount sufficient to fund all 10 of the priority issues noted in item (1) above. Based on analysis provided by the district's architects and financial advisors, we believe this amount to be \$46,590,000. The committee additionally recommends that the Board sequence, and possibly restrict, the sale of the authorized instruments, in order to limit the increase (above current level) of PISD debt service tax levy to no more than 17 cents per \$100 valuation.

**3) Zoning Recommendations**

- a) A map of recommended Zoning is attached.



**ORDER CALLING AN ELECTION**

**THE STATE OF TEXAS** §  
**COLLIN COUNTY** §  
**PRINCETON INDEPENDENT SCHOOL DISTRICT** §

WHEREAS, this Board of Trustees of Princeton Independent School District (the "District") deems it advisable to call the election hereinafter ordered; and

WHEREAS, it is hereby officially found and determined that the meeting at which this order was adopted was open to the public, and public notice of the time, place, and purpose of the meeting was given, all as required by the Texas Government Code, Chapter 551.

THEREFORE, BE IT ORDERED BY THE BOARD OF TRUSTEES OF PRINCETON INDEPENDENT SCHOOL DISTRICT:

1. An election shall be held between the hours of 7:00 A.M. and 7:00 P.M. on May 10, 2008 in the District. The District shall constitute a single election precinct for the election, and all voters will vote on election day at the following designated polling place:

Princeton City Hall  
306 N. Main Street  
Princeton, Texas

2. In accordance with Chapter 85, Texas Election Code, as amended, early voting by personal appearance at a temporary branch polling place shall be conducted at the time, and be available for any resident of the District, as follows:

<u>Date</u>	<u>Time</u>	<u>Polling Place</u>
May 1, 2008	5:30 P.M. – 7:30 P.M.	Lacy Elementary School 224 E. College Princeton, Texas
May 1, 2008	5:30 P.M. – 7:30 P.M.	Godwin Elementary School 1019 N. 6th Street Princeton, Texas
May 1, 2008	6:30 P.M. – 8:30 P.M.	Princeton High School 1000 E. Princeton Dr. Princeton, Texas
May 2, 2008	6:30 P.M. – 9:00 P.M.	Princeton High School 1000 E. Princeton Dr. Princeton, Texas
May 3, 2008	6:30 P.M. – 9:00 P.M.	Princeton High School 1000 E. Princeton Dr. Princeton, Texas

May 6, 2008	6:00 P.M. – 9:00 P.M.	Princeton High School 1000 E. Princeton Dr. Princeton, Texas
May 6, 2008	5:30 P.M. – 7:30 P.M.	Lacy Elementary School 224 E. College Princeton, Texas
May 6, 2008	5:30 P.M. – 7:30 P.M.	Godwin Elementary School 1019 N. 6th Street Princeton, Texas

3. Early voting shall be conducted by personal appearance and by mail at the following locations:

Voting in Person:

Princeton City Hall  
306 N. Main Street  
Princeton, Texas 75407

Voting in Person or by Mail:

Collin County Elections Department  
2010 Redbud Blvd., Suite 102  
McKinney, Texas 75069

and during the period early voting is required or permitted by law, being April 28, 2008 through May 6, 2008, the hours designated for early voting by personal appearance shall be from 8:00 A.M. to 5:00 P.M. on each day except May 5, 2008 and May 6, 2008 when early voting shall be conducted from 7:00 A.M. to 7:00 P.M., and except on Saturdays, Sundays and legal state holidays, when no early voting will be conducted. The early voting clerks shall keep the early voting place open during such hours for early voting by personal appearance.

4. An early ballot board is hereby created to process early voting results, and Sharon Rowe is hereby appointed as the presiding judge of the board. The presiding judge shall appoint at least two other members of the board.

5. All resident, qualified electors of the District shall be entitled to vote at the election.

6. A substantial copy of this Order shall serve as proper notice of the election, and the President of the Board of Trustees shall cause the notice to be published one time, not earlier than the 30th day or later than the 10th day prior to the date set for the election, in a newspaper published in the District or, if none is published in the District, in a newspaper of general circulation in the District. In addition, not later than the 21st day prior to the date set for the election, the President of the Board of Trustees shall cause the notice to be posted on the bulletin board used for posting notices of meetings of the Board of Trustees.

7. At the election, the following PROPOSITION shall be submitted in accordance with law

**PROPOSITION**

Shall the Board of Trustees of Princeton Independent School District be authorized to issue the bonds of the District, in one or more series, in the aggregate principal amount of \$46,590,000, for the purpose of the acquisition, construction, equipment and renovation of school buildings in the District and the purchase of necessary sites therefor, with the bonds

to mature, bear interest, and be issued and sold in accordance with law at the time of issuance; and shall the Board of Trustees be authorized to levy and pledge, and cause to be assessed and collected, annual ad valorem taxes, on all taxable property in the District, sufficient, without limit as to rate or amount, to pay the principal of and interest on the bonds and the cost of any credit agreements executed in connection with the bonds and the cost of any credit agreements executed in connection with the bonds?

8. The official ballots for the election shall be prepared in accordance with the Texas Election Code so as to permit the electors to vote "FOR" or "AGAINST" the aforesaid PROPOSITION with the ballots to contain such provisions, markings and language as required by law, and with such PROPOSITION to be expressed substantially as follows:

PROPOSITION

FOR	_____	)	THE ISSUANCE OF \$46,590,000 OF BONDS FOR SCHOOL
		)	BUILDINGS FOR PRINCETON INDEPENDENT SCHOOL
AGAINST	_____	)	DISTRICT, AND LEVYING THE TAX IN PAYMENT THEREOF.
		)	

9. In all respects, the election shall be conducted in accordance with the Texas Election Code (the "Code"). Pursuant to the federal Help America Vote Act ("HAVA") and the Code, at each polling place there shall be at least one voting system that is equipped for disabled individuals, and each such voting system shall be a system that has been certified by the Texas Secretary of State as compliant with HAVA and the Code.

-----

**ORDER CANVASSING BOND ELECTION**

**THE STATE OF TEXAS  
COLLIN COUNTY  
PRINCETON INDEPENDENT SCHOOL DISTRICT**

§  
§  
§

WHEREAS, this Board of Trustees ordered an election to be held in said District on May 10, 2008, on the PROPOSITION hereinafter stated; and

WHEREAS, said Board of Trustees has investigated all matters pertaining to said election, including the ordering, giving notice, appointing election officers, holding and making returns of said election; and

WHEREAS, the election officers who held said election have duly made the returns of the result thereof, and said returns have been duly delivered to said Board of Trustees.

WHEREAS, it is hereby officially found and determined that the meeting at which this Order was adopted was open to the public, and public notice of the time, place and purpose of said meeting was given, all as required by Chapter 551, Texas Government Code.

THEREFORE, BE IT ORDERED BY THE BOARD OF TRUSTEES OF PRINCETON INDEPENDENT SCHOOL DISTRICT:

1. That the Board of Trustees officially finds and determines that said election was duly ordered, that proper notice of said election was duly given, that proper election officers were duly appointed prior to said election, that said election was duly held, that the District has complied with the Federal Voting Rights Act and the Texas Election Code, that due returns of the result of said election have been made and delivered, and that the Board of Trustees has duly canvassed said returns, all in accordance with law and the Order calling said election.

2. That the Board of Trustees officially finds and determines that the following votes were cast at said election, on the submitted PROPOSITION by the resident, qualified electors of said District, who voted at the election:

**PROPOSITION**

Votes For:	341	)	THE ISSUANCE OF \$46,590,000 OF BONDS FOR SCHOOL
		)	BUILDINGS FOR PRINCETON INDEPENDENT SCHOOL
Votes Against:	270	)	DISTRICT, AND LEVYING THE TAX IN PAYMENT
		)	THEREOF.
		)	

3. That the Board of Trustees officially finds, determines and declares the result of said election to be that the aforesaid PROPOSITION has received a favorable majority vote, and that such PROPOSITION therefore has passed, and that the bonds authorized by the aforesaid PROPOSITION may be issued and the aforesaid bond tax supporting said bonds may be levied by the District.

-----

## **Executive Summary 2001 Long Range Planning Committee**

A Long Range Planning Committee met during the 2001 – 2002 school year according to the process on page 6 of this study. They presented their Final Recommendations to the Board of Trustees on February 28, 2002. On March 11, 2002 the Board called for a Bond Election in the amount of \$45.5 Million for the purpose of construction, equipment, and renovation of school buildings and for the purchase of necessary sites. The Election was held on May 4, 2002 and passed by a vote of 293 for and 90 against. Construction began summer 2002 and the last project was completed spring 2009.

### **Committee Recommended Items Completed:**

- a) New High School – Complete 2004
- b) Renovation of Huddleston Intermediate – Complete 2004
- c) Renovation of Clark Jr. High – Complete 2004
- d) Repairs of Lacy Elementary – Complete 2004
- e) Construction of Harper Elementary – Complete 2008
- f) Renovation of Community Education Building – Complete 2009

### **Additional Items completed:**

- g) Conversion of Special Programs
- h) Conversion of Auxiliary Services
- i) Renovation of Central Office
- j) Conversion of Wellness Center
- k) Renovation of Baseball / Softball
- l) Renovation of Football Stadium
- m) Purchase of Elementary #4 Site
- n) Set Aside for Roads at Elementary #4
- o) Purchase of Jr. High #2 Site
- p) Construction of Tennis Courts
- q) Replace Carpet at Lacy and Godwin
- r) Addition of 4 Classrooms to Godwin Elementary

### **Fund Balance:**

All of the above projects were completed except for the amount set aside for Roads at Elementary #4. The set aside amount of \$280,964.75 and the obligation for the roads plus an additional \$160,473.42 was transferred to the 2008 Bond Program.

### **Tax Rate Impact:**

Tax Rate prior to passing the 2002 Bond was 20 cents. The recommendation from the Long Range Planning Committee was to limit the increase to no more than 25 cents. The actual Tax Rate, however, never increased more than 19 cents and that was only in 2002-2003. The Tax Rate was at 32.87 cents prior to passing the 2008 Bond.

# 2001 Demographic Study

## Low-Range Projections

	Grade														Total	School Type				
	EE	PK	K	1st	2nd	3rd	4th	5th	6th	7th	8th	9th	10th	11th		12th	EE-5	6	7-8	9-12
2002	20	24	152	163	144	158	160	190	180	210	195	200	195	157	116	2264	1011	180	405	668
2003	20	22	152	163	163	146	164	163	193	195	209	205	190	174	147	2306	993	193	404	716
2004	20	21	152	163	163	165	152	167	166	208	194	219	195	170	165	2320	1003	166	402	749
2005	20	19	152	163	163	165	171	155	170	181	207	204	209	175	160	2314	1008	170	388	748
2006	20	18	152	163	163	165	171	174	158	185	180	217	194	189	165	2314	1026	158	365	765
2007	20	16	152	163	163	165	171	174	177	173	184	190	207	174	179	2308	1024	177	357	750
2008	20	15	152	163	163	165	171	174	177	192	172	194	180	187	164	2289	1023	177	364	725
2009	20	14	152	163	163	165	171	174	177	192	191	182	184	160	177	2285	1022	177	383	703
2010	20	12	152	163	163	165	171	174	177	192	191	201	172	164	150	2267	1020	177	383	687
2011	20	11	152	163	163	165	171	174	177	192	191	201	191	152	154	2277	1019	177	383	698

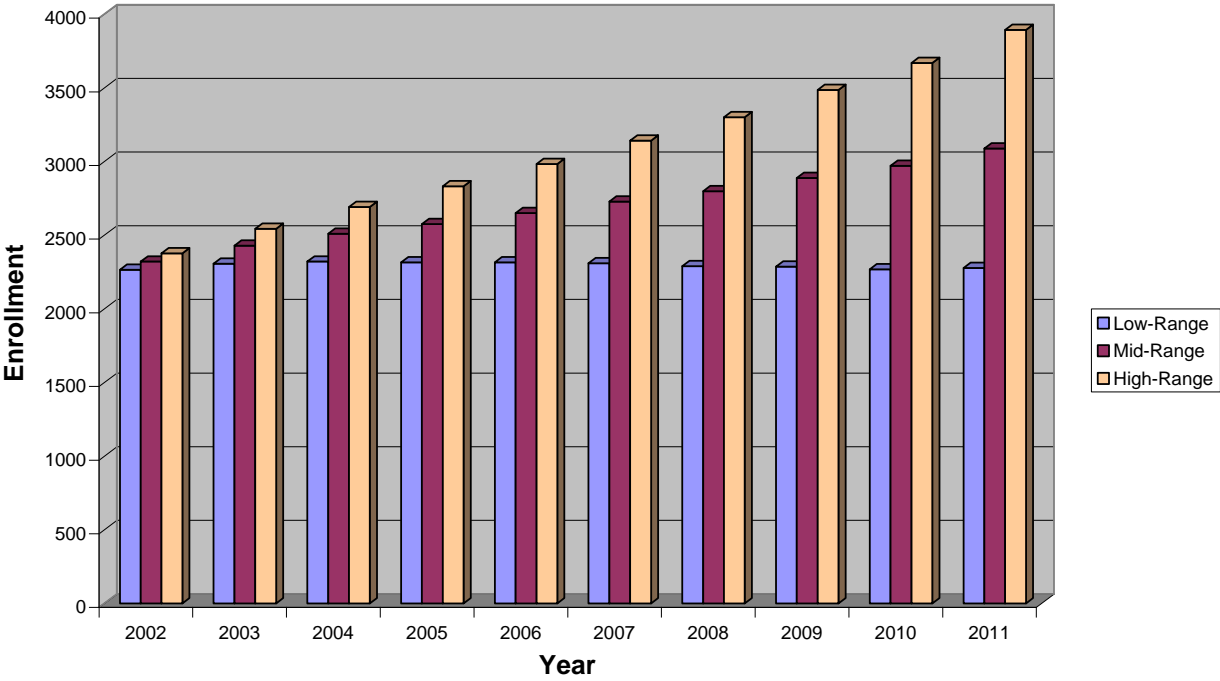
## Mid-Range Projections

	Grade														Total	School Type				
	EE	PK	K	1st	2nd	3rd	4th	5th	6th	7th	8th	9th	10th	11th		12th	EE-5	6	7-8	9-12
2002	22	25	162	165	148	161	163	194	184	213	198	207	198	161	119	2320	1040	184	411	685
2003	24	26	171	174	169	153	170	170	200	202	215	215	201	182	155	2427	1057	200	417	753
2004	26	26	181	184	178	174	162	177	176	218	204	232	209	185	176	2508	1108	176	422	802
2005	28	26	190	193	188	183	183	169	183	194	220	220	226	193	178	2574	1160	183	414	817
2006	30	26	200	203	197	193	192	189	175	201	196	237	214	210	186	2649	1230	175	397	847
2007	32	27	209	212	207	202	202	199	196	193	203	213	231	198	203	2727	1290	196	396	845
2008	34	27	219	222	216	212	211	208	205	214	195	220	207	215	192	2797	1349	205	409	834
2009	36	27	228	231	226	221	221	218	215	223	216	212	214	191	208	2887	1408	215	439	825
2010	38	28	238	241	235	231	230	227	224	233	225	232	206	198	184	2970	1468	224	458	820
2011	40	28	247	250	245	240	240	237	234	242	235	242	226	190	191	3087	1527	234	477	849

## High Range Projections

	Grade														Total	School Type				
	EE	PK	K	1st	2nd	3rd	4th	5th	6th	7th	8th	9th	10th	11th		12th	EE-5	6	7-8	9-12
2002	24	27	171	166	152	164	166	197	187	216	201	214	202	166	122	2375	1067	187	417	704
2003	28	29	190	185	174	160	176	176	207	208	221	225	211	190	162	2542	1118	207	429	788
2004	32	31	209	204	193	182	172	186	186	228	213	245	222	200	187	2690	1209	186	441	854
2005	36	33	228	223	212	201	194	182	196	207	233	237	242	211	196	2831	1309	196	440	886
2006	40	35	247	242	231	220	213	204	192	217	212	257	234	231	207	2982	1432	192	429	929
2007	44	37	266	261	250	239	232	223	214	213	222	236	254	223	227	3141	1552	214	435	940
2008	48	39	285	280	269	258	251	242	233	235	218	246	233	243	219	3299	1672	233	453	941
2009	52	41	304	299	288	277	270	261	252	254	240	242	243	222	239	3484	1792	252	494	946
2010	56	43	323	318	307	296	289	280	271	273	259	264	239	232	218	3668	1912	271	532	953
2011	60	45	342	337	326	315	308	299	290	292	278	283	261	228	228	3892	2032	290	570	1000

# Demographic Projections 2001 Study



**Final Report of the Facilities Committee  
To  
Princeton ISD Board of Trustees  
28 February 2002**

**Preface:** Pursuant to the written request from the Board of Trustees of date January 25, 2002, this committee met on four occasions with Superintendent Philip Anthony to (i) review the current district facility status, (ii) assess the expected demographic changes in the district, and (iii) submit a recommendation to the Board as to future district facility needs. This Final Report constitutes the consensus recommendation of the Facilities Committee. In addition, attached hereto are individual comments from several members of the Facilities Committee.

**Recommendations:**

- 1) **Grade alignment:**

New High School	-	Grades 9-12
Current HS converted to MS	-	Grades 7-8
Current MS converted to IS	-	Grades 5-6
Current IS converted to ES	-	Grades E-4
Current ES retained as ES	-	Grades E-4
  
- 2) **Construction/Renovation Priorities:** The committee, while recognizing that there are a series of complex tradeoffs to be considered in order to maximize the utilization of present and future funding, recommends that the order of priority should be as follows:
  - a) Construction of new High School to accommodate 1000 students.
  - b) Necessary renovation of current Middle School.
  - c) Renovation and conversion of current High School.
  - d) Essential repairs to current Elementary School.
  - e) Provision for construction of a third Elementary School when needed.

Additionally, the committee strongly urges the Trustees to make every effort to find ways to upgrade the Community Education facility. While arguably not an essential element, this facility provides important and highly visible services to important segments of the community.

3) **Finance Recommendations:**

With appropriate respect for the vagaries of school finance, the committee believes that the Trustees should call a bond approval election for a capital amount sufficient to fund all five priority issues noted in item (2) above. Based upon the analysis provided by Superintendent Anthony, we believe this amount to be \$42 to \$45 Million dollars. However, the committee strongly urges the Trustees to sequence, and possibly restrict, the sale of the authorized instruments, in order to limit the increase (above current level) of PISD debt service tax levy to no more than 25 cents per \$100 valuation.

**ORDER CALLING AN ELECTION**

**THE STATE OF TEXAS** §  
**COLLIN COUNTY** §  
**PRINCETON INDEPENDENT SCHOOL DISTRICT** §

WHEREAS, this Board of Trustees of Princeton Independent School District (the "District") deems it advisable to call the election hereinafter ordered; and

WHEREAS, it is hereby officially found and determined that the meeting at which this order was adopted was open to the public, and public notice of the time, place, and purpose of the meeting was given, all as required by the Texas Government Code, Chapter 551.

THEREFORE, BE IT ORDERED BY THE BOARD OF TRUSTEES OF PRINCETON INDEPENDENT SCHOOL DISTRICT:

1. An election shall be held between the hours of 7:00 a.m. and 7:00 p.m. on May 4, 2002 in the District at the following designated polling place:

Community Education Building (Blue Building)  
319 McKinney Street  
Princeton, Texas

The District shall constitute a single election precinct for the election, and the following election officers are hereby appointed to hold the election:

Presiding Judge: Cathy Abbott

Alternate Presiding Judge: Catherine Abbott

2. The Presiding Judge shall appoint not less than two qualified election clerks to serve and assist in conducting the election; provided that if the Presiding Judge actually serves as expected, the Alternate Presiding Judge shall be one of such clerks.

3. That, in accordance with Chapter 85, Texas Election Code, as amended, early voting by personal appearance at a temporary branch polling place shall be conducted at the time, and be available for any resident of the District, as follows:

<u>Date</u>	<u>Time</u>	<u>Polling Place</u>
April 22, 2002	6:30 P.M. to 8:30 P.M.	Clark Middle School 301 North Fifth Street Princeton, Texas
April 23, 2002	6:00 P.M. to 8:00 P.M.	Clark Middle School 301 North Fifth Street Princeton, Texas
April 25, 2002	6:30 P.M. to 9:00 P.M.	Princeton High School 321 Panther Parkway Princeton, Texas
April 29, 2002	6:00 P.M. to 10:00 P.M.	Princeton High School 321 Panther Parkway Princeton, Texas
April 30, 2002	6:00 P.M. to 7:30 P.M.	Princeton Elementary School 224 East College Street Princeton, Texas

4. Early voting shall be conducted by personal appearance and by mail at:

If in Person:

Community Education Building (Blue Building)  
319 McKinney Street  
Princeton, Texas

If by Mail:

Superintendent  
Princeton Independent School District  
321 Panther Parkway  
Princeton, Texas 75407

and during the period early voting is required or permitted by law, being April 17, 2002 through April 30, 2002, the hours designated for early voting by personal appearance shall be from 8:00 a.m. to 5:00 p.m. on each day except Saturdays, Sundays and legal state holidays; and the early voting clerks shall keep the early voting place open during such hours for early voting by personal appearance. The early voting clerks for the election shall be Catherine Abbott and Nelma Hyde.

5. An early ballot board is hereby created to process early voting results, and Cathy Abbott is hereby appointed as the presiding judge of the board. The presiding judge shall appoint at least two other members of the board.

6. All resident, qualified electors of the District shall be entitled to vote at the election.

7. A substantial copy of this Order shall serve as proper notice of the election, and the President of the Board of Trustees shall cause the notice to be published one time, not earlier than the 30th day or later than the 10th day prior to the date set for the election, in a newspaper published in the District or, if none is published in the District, in a newspaper of general circulation in the District. In addition, not later than the 21st day prior to the date set for the election, the President of the Board of Trustees shall cause the notice to be posted on the bulletin board used for posting notices of meetings of the Board of Trustees.



**ORDER CANVASSING A BOND ELECTION**

**THE STATE OF TEXAS** §  
**COLLIN COUNTY** §  
**PRINCETON INDEPENDENT SCHOOL DISTRICT** §

WHEREAS, this Board of Trustees ordered an election to be held in said District on May 4, 2002, on the PROPOSITION hereinafter stated; and

WHEREAS, said Board of Trustees has investigated all matters pertaining to said election, including the ordering, giving notice, appointing election officers, holding and making returns of said election; and

WHEREAS, the election officers who held said election have duly made the returns of the result thereof, and said returns have been duly delivered to said Board of Trustees.

WHEREAS, it is hereby officially found and determined that the meeting at which this Order was adopted was open to the public, and public notice of the time, place and purpose of said meeting was given, all as required by Chapter 551, Texas Government Code.

THEREFORE, BE IT ORDERED BY THE BOARD OF TRUSTEES OF PRINCETON INDEPENDENT SCHOOL DISTRICT:

1. That the Board of Trustees officially finds and determines that said election was duly ordered, that proper notice of said election was duly given, that proper election officers were duly appointed prior to said election, that said election was duly held, that the District has complied with the Federal Voting Rights Act and the Texas Election Code, that due returns of the result of said election have been made and delivered, and that the Board of Trustees has duly canvassed said returns, all in accordance with law and the Order calling said election.

2. That the Board of Trustees officially finds and determines that the following votes were cast at said election, on the submitted PROPOSITION by the resident, qualified electors of said District, who voted at the election:

**PROPOSITION**

Votes For:	293	)	
		)	THE ISSUANCE OF \$45,500,000 OF BONDS FOR
		)	SCHOOL BUILDINGS, AND LEVYING THE TAX IN
Votes Against:	90	)	PAYMENT THEREOF.
		)	

3. That the Board of Trustees officially finds, determines and declares the result of said election to be that the aforesaid PROPOSITION so submitted which is shown above has received a favorable majority vote, and that such PROPOSITION therefore has passed.

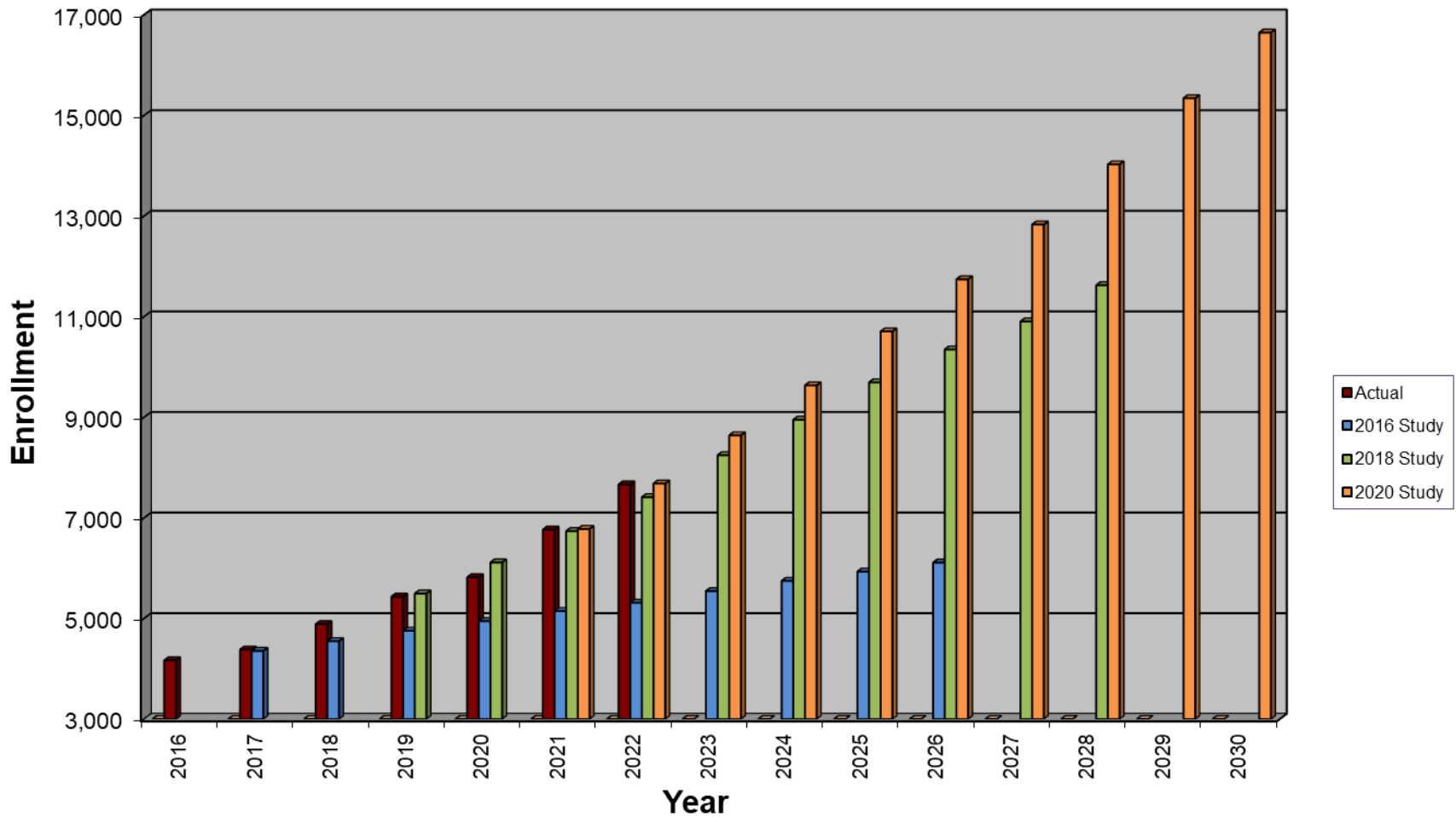
4. That the bonds authorized by the aforesaid PROPOSITION may be issued and the aforesaid bond tax supporting said bonds may be levied by the District.

# Facilities

	Capacity	Constructed	Programs	Expansions	Carpet Replace
Princeton Senior High	1,700	2004	10-12	Shops 2013 Lecture Halls 2013 Expansion 2016	2028
Lovelady High	1,800	2021	9	None	2033
Clark Middle	700	1986	6-8	4 Classrooms 1995 Gym, 2 Class 2009 8 Classrooms 2011	2030
Mattei Middle	1,000	2023	6-8	None	2035
Southard Middle	1,000	2019	6-8	None	2031
Godwin Elementary	600	1999	K-5	4 Classrooms 2008 Structural 2008 Pick-up Loop 2010 Renovated 2017	2029
Harper Elementary	650	2008	K-5	None	2032
Lacy Elementary	700	1973	K-5 Self-Cont.	4 Classrooms 1986 Main Building 1992 Renovated 2017	2029
Lowe Elementary	650	2019	K-5 BAU	None	2031
Mayfield Elementary	650	2022	K-5	None	2034
Smith Elementary	650	2015	K-5	None	2027
Canup Early Childhood	300	1969	PK Daycare	Band Hall 1972 South Classrooms 1981 Library 1996 CATE Center 2011 Renovated 2020	2032
Bodwell CATE	200	1981	CATE	CATE 2011 2 <sup>nd</sup> Auto Shop 2020	
Technology / Curriculum Annex		1972	Technology Curriculum	Renovated 2020	
Huddleston Sp. Prog.		1971	Special Programs DAEP	Renovated 2020	2032
Central Administration		1986	Superintendent Elem. Education Sec. Education Business Office HR Office Operations Communications	Board Room 2011	
Auxiliary Services		1986	Maintenance Custodial Transportation Food Service	Renovated 2018	
Testing / Counseling Annex.		Purchased 1981	Chamber of Commerce Community Ed. Maint. Shop	Renovated 2022	
Jackie Hendricks Stadium	4000 Home 1280 Visitor	1980	Stadium Wellness Center	Renovated 2009 Visitor Stands 2016	

	<b>Capacity</b>	<b>Constructed</b>	<b>Programs</b>	<b>Expansions</b>	<b>Carpet Replace</b>
Baseball / Softball	640 Baseball 640 Softball	1986	Renovated 2004 Practice Fields 2010	Lights 2004 Practice Fields 2010 Renovated 2012 Turf Fields 2018	
Multi-Purpose		2009	Athletic Offices	None	
Ag. Barn		2000	Agriculture	Expanded 2015, 2008, 2002	
Tennis Center	8 Courts	2007	Tennis	Concession/RR 2009 Bus Parking 2018	

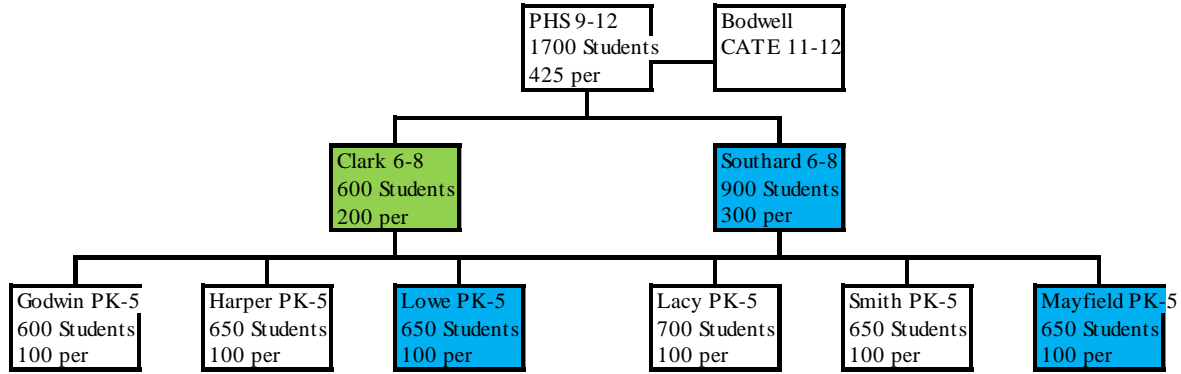
## Demographic Projections Comparison Projections to Actuals



### Campus Structure after Completion of 2017 Bond

Maximum Student Capacity 7,100

(600 per Elementary Grade, 500 per Middle School Grade, 425 per High School Grade)

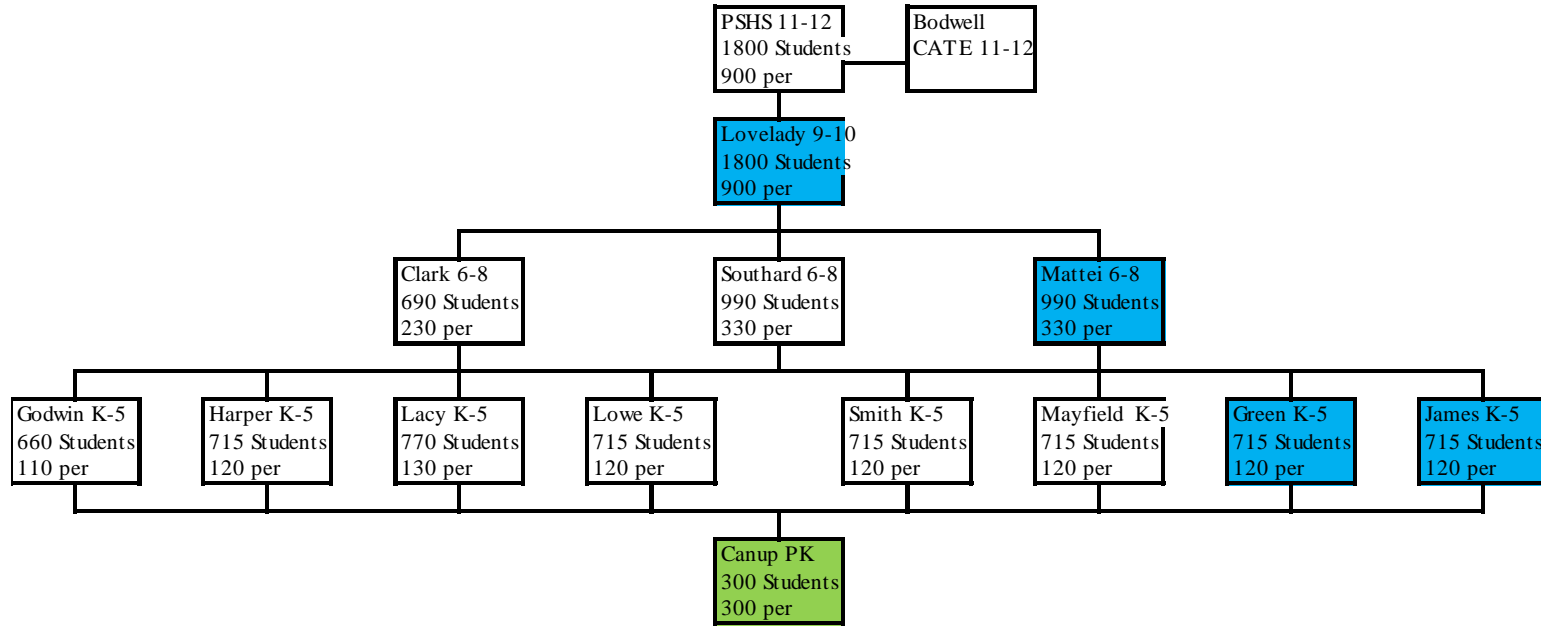


Note:  Addition / Renovation  
 New Campus  
 Change Facility Use

### Campus Structure after Completion of 2019 Bond

Maximum Student Capacity 11,990

(960 per Elementary Grade, 890 per Middle School Grade, 900 per High School Grade)

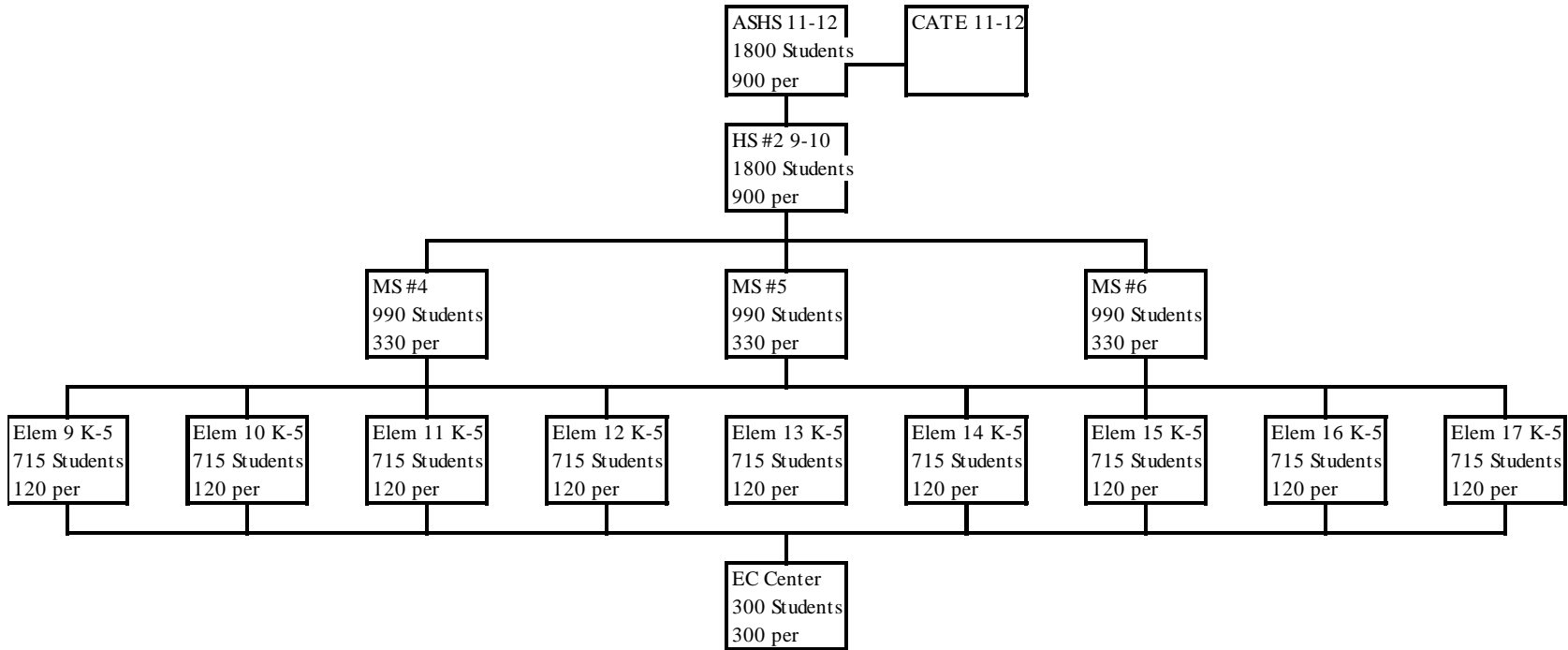


Note:  Addition to Campus  
 New Campus  
 Change Facility Use

### Campus Structure 2nd Pyramid

Maximum Student Capacity 12,270

(1,080 per Elementary Grade, 990 per Middle School Grade, 900 per High School Grade)



Note:  Addition to Campus  
 New Campus  
 Change Facility Use

## Future Construction at Demographic Projections through 2029

<u>Fall Year</u>	<u>Construction</u>	<u>Enrollment Trigger @ 110%</u>	<u>Enrollment Trigger @ 100%</u>	<u>Cost Estimate</u>	<u>Funding Source</u>	<u>Balance Bond</u>
2019	Purchase School Sites	NA	NA	\$4,600,000	Bond 2019	\$272,700,000
2021	Phase 1 Lovelady 9-10	9-12 > 1,800	NA	\$53,000,000	Bond 2019	\$219,700,000
2022	Mayfield Elementary (#6)	K-5 > 3,575	NA	\$26,000,000	Bond 2019	\$193,700,000
2023	Mattei Middle School (#3)	6-8 > 1,700	NA	\$53,200,000	Bond 2019	\$140,500,000
2024	Green Elementary (#7)	K-5 > 4,290	NA	\$37,200,000	Bond 2019	\$103,300,000
2024	Phase 2 Lovelady 9-10	10-12 > 1,800	NA	\$25,000,000	Bond 2019	\$78,300,000
2025 (24)	James Elementary (#8)	K-5 > 5,005	K-5 > 4,550	\$36,400,000	Bond 2019	\$41,900,000
<b>Pyramid 1 Complete</b>						
TBD	Elementary #9	K-5 > 5,720	K-5 > 5,200			
TBD	Middle School #4	6-8 > 2,700	Elem. 9			
TBD	High School #2	9-10 > 1,800 or 11-12 > 1,800	9-10 > 1,700 or 11-12 > 1,700			
TBD	Elementary #10	K-5 > 6,435	K-5 > 5,850			
TBD	Elementary #11	K-5 > 7,150	K-5 > 6,500			
TBD	Elementary #12	K-5 > 7,850	K-5 > 7,150			
TBD	Middle School #5	6-8 > 3,700	Elem. 12			

