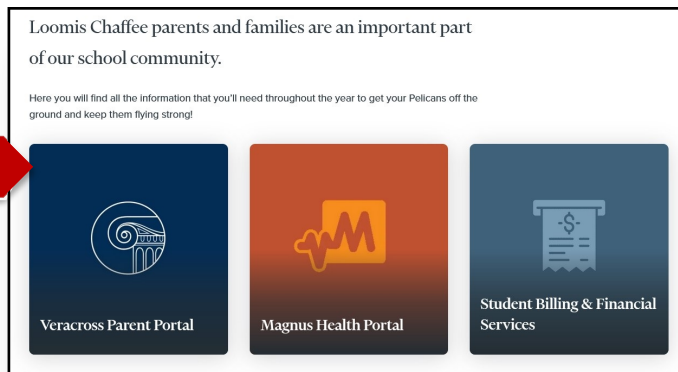
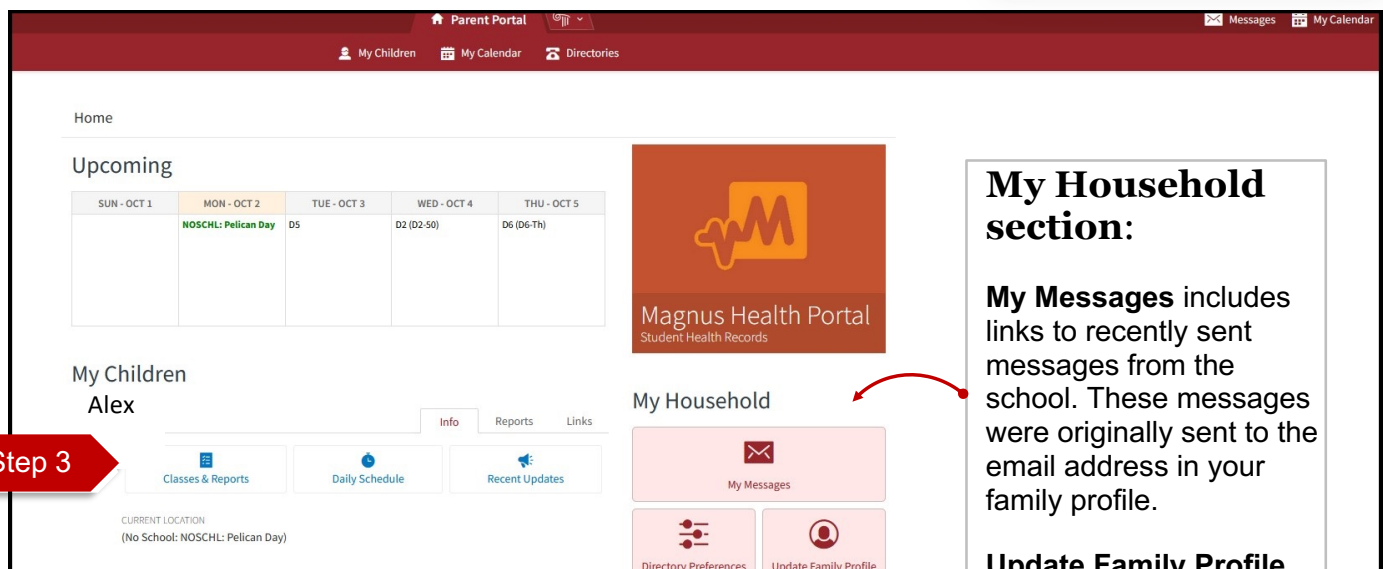


Finding Grade Reports

Step 1: Visit the **Parents & Families** page of the Loomis Chaffee website



Step 2: Click the **Veracross** link to log into the Parent Portal



My Household section:

My Messages includes links to recently sent messages from the school. These messages were originally sent to the email address in your family profile.

Update Family Profile directs you to a form where you can easily edit the details of your household and its family members. You can also add emergency contacts and update your own contact information.

My Children section:

Classes and Reports includes **progress reports, report cards, your child's schedule and attendance records.**

Daily Schedule indicates each period of the day with its starting time.

Recent Updates lists student homework assignments.

The **Reports** tab is another way to access progress reports and report cards.

The **Links** tab gives quick links to **schedules** and, in the spring, **course requests.**

School Links section:

Student Directory and **Faculty/Staff Directory** allow you to search for members of the LC community.