

# 4th Grade Virtual Curriculum Night

2023-2024



# Thank you, community!

In 2022, the LWSD community approved three levies:

**Educational Programs & Operations Levy** – provides continued funding for staff, opportunities for early learning, filling the gap between what the state funds and what our students need.\*

**School Technology & Capital Projects Levy** - provides continued funding for student computers, classroom technology and building updates.\*

**2022 Building Excellence Levy** - provides funding for additions at Finn Hill, Kirkland and Redmond middle schools; rebuilding and enlarging Rockwell Elementary, additional high school capacity on the eastside and westside, acquisition of property for future schools.

\*These levies need to be renewed by voters every four years.





## JME Title 1 school

John Muir Elementary is a Title I School. This means that we receive Federal funding to **supplement** existing programs in support of student progress toward the state's challenging academic standards. These funds can be used for parent and family engagement, staff professional development, curricular tools, and other resources.



# Title I Parent and Family Rights



## You have the right to...

1. Participate in the planning and decision-making processes pertaining to Title I
2. Receive communication and translation services in your home language
3. Request teacher and paraeducator qualifications
4. Receive information about curriculum and assessments

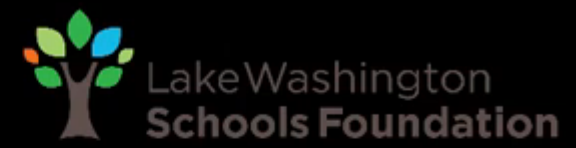
If you feel that our school is not meeting the requirements for Title I, you have the right to file a citizen complaint.



# Title I Parent-Family Engagement

Your voice is important in guiding our Title I Program. If you have not already done so, please complete the short survey on Parent Square (Scan QR Code) to share ideas and availability.





# 4<sup>th</sup> Grade Philosophy



Practice

Reteach

Praise



# Positive Behavioral Intervention Systems



## PBIS

- JME R.O.A.R.
  - *Respectful*
  - *On task*
  - *Appropriate*
  - *Responsible*
- Gotcha Tickets
- ROAR Awards





# Social & Emotional Learning



- Purposeful People
  - With classroom teacher
- Second Step
  - With school counselor



# Reading



## Wonders

- Essential Question
- Comprehension Strategy
- Comprehension Skill
- Vocabulary Strategy
- Phonics
- Genre
- Shared Read
- Anthology





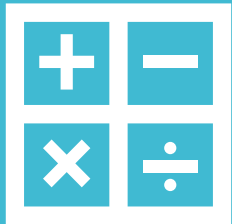
Writing

# District Units

- Informational
- Opinion
- Narrative



Math



## Illustrative

- Factors & Multiples
- Fractions
- Fraction Operations
- Place Value
- Measurement
- Multiplication & Division
- Angles
- Shapes



Technology



# Class Link

- Lexia
- Dreambox
- Edutyping



Science



# Amplify

- Waves, Energy & Information
- Energy Conversions
- Vision & Light
- Earth's Features



Social Studies



# Washington Our Home

- Civics
- Economics
- Geography
- History



Art



# Deep Space Sparkle

- Deep Space Sparkle
- Art Docent
- **JME National Heritage Month Alignment**





Health  
Letter will be  
sent home




## King County FLASH

- Family
- Self-Esteem
- Gender Roles
- Friendship
- Decision Making
- Puberty
- Reproductive Systems



# Ms. Plese Weekly Schedules

Time	Monday	Tuesday	Wednesday	Thursday	Friday
8:40 – 9:05	Community Circle	Community Circle	WINN (8:40 – 9:10 am)	Community Circle	Community Circle
9:05 – 10:35	Math	Math	Math	Math	Math
10:35 – 10:50	Recess	Recess	Recess	Recess	Recess
10:50 – 11:50	Reading	Reading	Reading	Reading	Reading
11:50 – 12:25	Writing	Writing	Writing	Writing	Writing
12:25 – 1:20	Lunch	Lunch	Lunch	Lunch	Lunch
1:20 – 1:35	Read Aloud	Read Aloud	Community Circle	Read Aloud	Read Aloud
1:35 – 2:05	WINN	WINN	Dismiss @ 1:40 LEAP	WINN	WINN
2:05 – 2:35	Science/SS	Science/SS		Library	Science/SS
2:35 – 2:40	Jobs & Pack-Up	Jobs & Pack-Up		Jobs & Pack-Up	Jobs & Pack-Up
2:40 – 3:10	PE	Music		Music	PE 
3:10	Dismissal	Dismissal		Dismissal	Dismissal

# Mrs. Morison Weekly Schedules

Time	Monday	Tuesday	Wednesday	Thursday	Friday
8:40 – 9:05	Community Circle	Community Circle	WINN (8:40 – 9:10 am)	Community Circle	Community Circle
9:05 – 10:35	Math	Math	Math	Math	Math
10:35 – 10:50	Recess	Recess	Recess	Recess	Recess
10:50 – 11:50	Reading	Reading	Reading	Reading	Reading
11:50 – 12:25	Writing	Writing	Writing	Writing	Writing
12:25 – 1:20	Lunch	Lunch	Lunch	Lunch	Lunch
1:20 – 1:35	Read Aloud	Read Aloud	Community Circle	Read Aloud	Read Aloud
1:35 – 2:05	WINN	WINN	Dismiss @ 1:40 LEAP	WINN	WINN
2:05 – 2:35	Library	Science/SS		Science/SS	Science/SS
2:35 – 2:40	Jobs & Pack-Up	Jobs & Pack-Up		Jobs & Pack-Up	Jobs & Pack-Up
2:40 – 3:10	Music	PE		PE	Music
3:10	Dismissal	Dismissal		Dismissal	Dismissal



# Optional Homework



INDEPENDENT  
READING



LEXIA



DREAMBOX



EDUTYPING



CHECK  
NEWSLETTER



MATH FAMILY  
SUPPORT 

# Communication



- Parent Square
- Past week learning
- Upcoming events
- Important announcements



ParentSquare

- 24 hour turn around time
- Notify Office
- Note



# Safety Net

## Purpose

- Support students in partnership with general education teachers in literacy so they can meet or exceed grade level standards
- Safety Net instruction never replaces core instruction with their teacher, it serves as extra instruction for students who qualify



Beth Schultz

[beschultz@lwsd.org](mailto:beschultz@lwsd.org)



Julie Palmer

[jupalmer@lwsd.org](mailto:jupalmer@lwsd.org)



Michelle Vallene

[mvallene@lwsd.org](mailto:mvallene@lwsd.org)



Ellen Barber

[ebarber@lwsd.org](mailto:ebarber@lwsd.org)



# Who is Served?

MEASUREMENT- FASTBRIDGE

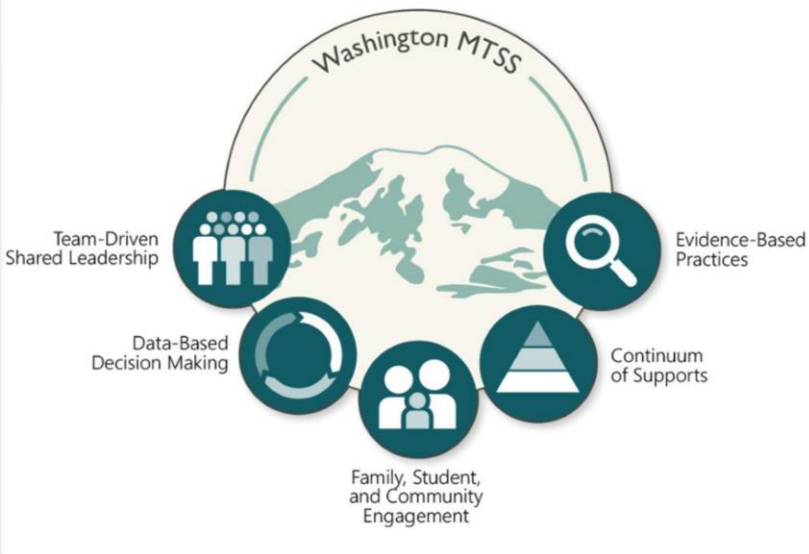
STUDENT NOT MEETING  
STANDARD

PARENTS WILL BE CONTACTED  
IF STUDENT QUALIFIES

GROUPS BEGIN WHEN TESTING  
IS COMPLETED



# MTSS Coach



- Former safety net teacher
- MTSS Leadership
- MTSS stands for Multi-Tiered System of Support, coach partners with teachers to ensure appropriate student supports are in place so that each learner feels a sense of belonging, makes measurable growth, and feels successful







We provide English instruction and support to multilingual students in all grades – focusing on listening, speaking, reading, and writing.



The type and level of English support is determined by students' WIDA test scores and other assessments given by classroom and intervention teachers.

# Multilingual Learner (ML) Program



**Ms. Chavez**  
ichavez@lwsd.org



**Ms. Dean**  
ddean@lwsd.org



